

Conservation Easements and Working Forestland

A Practitioner's
perspective . . .

Working Forest Easements

- ▶ When can conservation easements help meet your stewardship goals?
- ▶ Timothy Metz, RPF
Restoration Forestry, Inc.

Topics of Discussion

- ▶ Brief introduction to conservation easements
- ▶ My direct experience with working forest easements
- ▶ When I would recommend an easement for a client
- ▶ The downsides of easements
- ▶ The value of patience

Conservation Easements in one Powerpoint Slide

- ▶ The Deck of Cards/Bundle of Rights
 - You “hold the cards”
- ▶ Constrain Rights for Public Interest
- ▶ Value of Easement
- ▶ Sale or Donation
- ▶ Tax Benefits



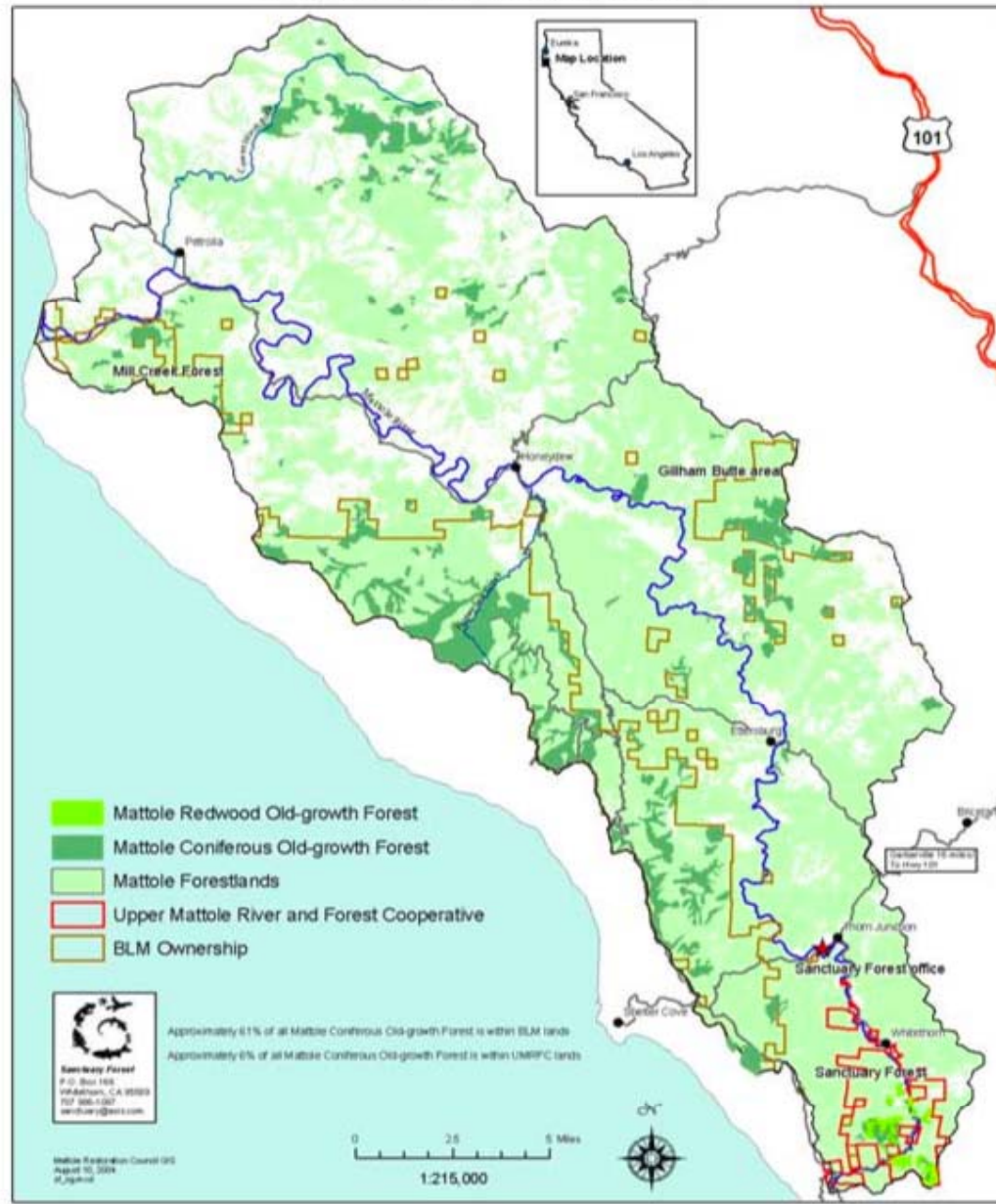
Thompson Creek, Mattole River Headwaters

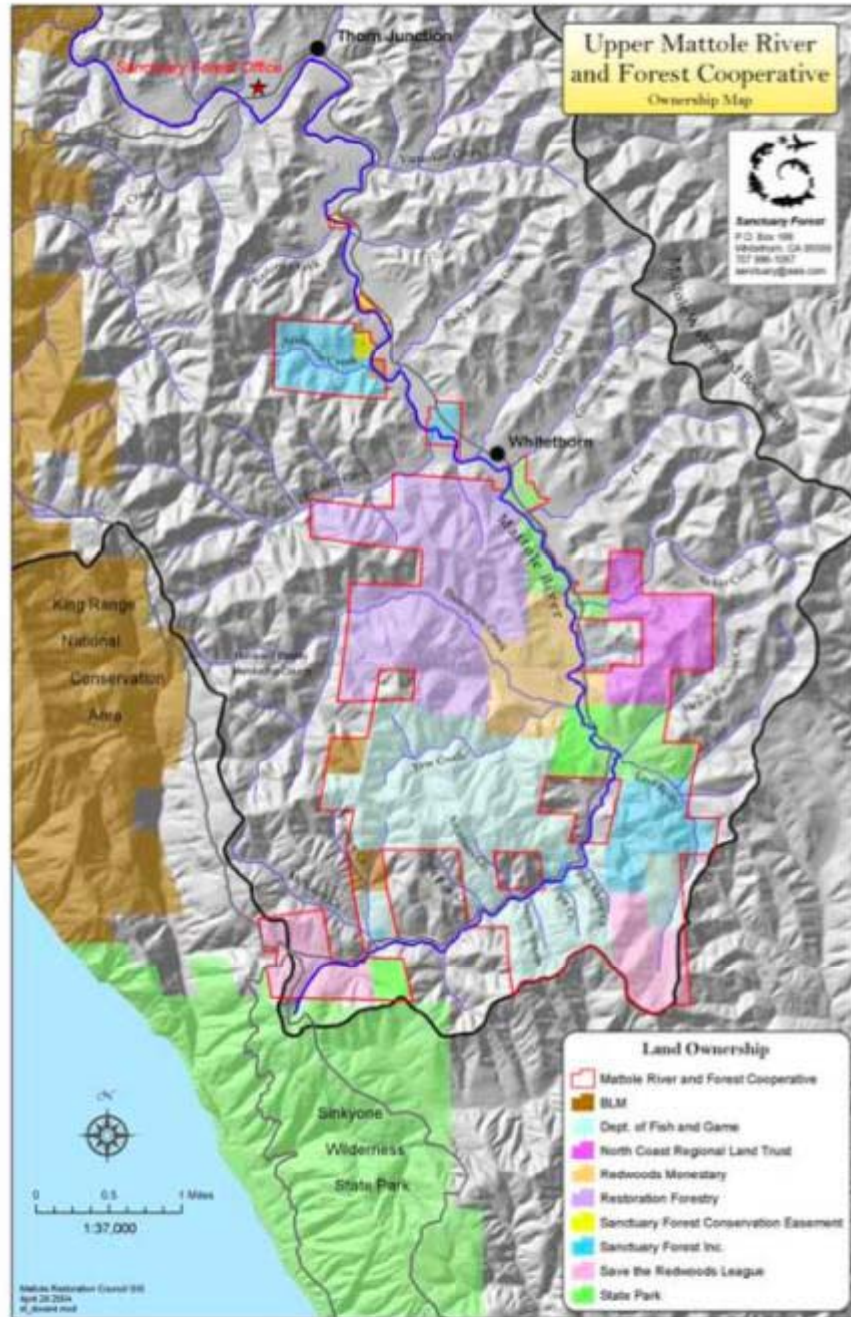
My Working Forest Easement

- ▶ Why it worked
- ▶ Upper Mattole River and Forest Cooperative
 - BLM, DFG, CDF, Sinkyone State Park, Coastal Conservancy, Wildlife Conservation Board, Save-the-Redwoods League, Sanctuary Forest, Inc. and Restoration Forestry, Inc.

Conservation Context

Mattole Watershed
Forestlands and Coniferous Old-Growth, 2004





Clients and Easements

- ▶ Management goals clearly defined
- ▶ Long family history with the land
- ▶ Inheritance/Estate Taxes
- ▶ Carbon Market

The Downside of Conservation Easements

- ▶ Easements really are forever
- ▶ The Endowment
- ▶ Monitoring

Patience

- ▶ “I had a huge capital gain this year, can I get an easement done in three months?”
- ▶ Live with your easement
- ▶ For some, it’s not the right choice

It's a tool

- ▶ Working forest easements can make monetary sense in the right situation.
- ▶ Don't rush the process
- ▶ Build relationship with local land trust

Wolf Creek,
Sinkyone
Wilderness
State Park

