

Natural Resource Planning for Landowners



What does it mean to create a plan?

- What do I plan for?
- What should a plan consist of?
- What is sustainability?
- How do I get started?
- What about regulations?
- *Do I want a plan or am I being forced into a plan?*



How to get started and what should a plan consist of?

Goals and objectives

- Landscape goals
- Quality of life goals

Inventory of resources

- Current conditions – problems, opportunities, land use activities,
- Ranch Resources – Climate, topography, Geology, soils, water, location, past improvements, how much pasture and forestland

Are there any problems here?



How to get started and what should a plan consist of?

Land operation (the how) – Calendar of operations, use records, harvest plans, livestock management.

Implementation

Monitoring and Evaluation – physical monitoring, notations, PICTURES!!!



How to get started and what should a plan consist of?

How do I want my land to look in 5 years?

How do I want my land to look in ten years?

Is this sustainable?



Record Keeping

Historical Records

- a. Journals, letters
- b. Past ownership
- c. Economic
- d. Management plans and use records



Baseline Records

- a. vegetation conditions
- b. weather
- c. FIRE – subsequent changes

Record Keeping

Improvement Records – tracking implementation

Physical Records – maps, aerial photos, surveys.

Economic Records

a. investments

b. costs

c. Income

Wildlife – aesthetics, and potential income.



Where to get information

- Do it yourself resources.
 1. Web Soil Survey
 2. Google Earth
 3. Topozone





United States Department of Agriculture
Natural Resources Conservation Service

Web Soil Survey

Home About Soils Help Contact Us

You are here: WSS Home

Search

Enter Keywords
All NRCS Sites

Browse by Subject

- ▶ Soils Home
- ▶ National Cooperative Soil Survey (NCSS)
- ▶ Archived Soil Surveys
- ▶ Status Maps
- ▶ Official Soil Series Descriptions (OSD)
- ▶ Soil Series Extent Mapping Tool
- ▶ Soil Data Mart
- ▶ Geospatial Data Gateway
- ▶ eFOTG
- ▶ National Soil Characterization Data
- ▶ Soil Geochemistry Spatial Database
- ▶ Soil Quality
- ▶ Soil Geography
- ▶ Geospatial One Stop

The simple yet powerful way to access and use soil data.



Welcome to Web Soil Survey (WSS)



Web Soil Survey (WSS) provides soil data and information produced by the National Cooperative Soil Survey. It is operated by the USDA Natural Resources Conservation Service (NRCS) and provides access to the largest natural resource information system in the world. NRCS has soil maps and data available online for more than 95 percent of the nation's counties and

anticipates having 100 percent in the near future. The site is updated and maintained online as the single authoritative source of soil survey information.

Three Basic Steps

1 Define



Mouzeover to enlarge image.

[Use the Area of Interest tab](#) to define your area of interest.

2 View/Explore



[Click the Soil Map tab](#) to view or print a soil map, or click the [Soil Data Explorer tab](#) to access soil data for your area

I Want To...

- [Start Web Soil Survey \(WSS\)](#)
- [Know the requirements for running Web Soil Survey](#)
- [Know whether my web browser works with Web Soil Survey](#)
- [Know the Web Soil Survey hours of operation](#)
- [Find what areas of the U.S. have soil data](#)

Announcements/Events

- [Web Soil Survey 2.0 has been released! View description of new features.](#)

I Want Help With...

- [How to use Web Soil Survey](#)
- [Known problems and workarounds](#)
- [Frequently Asked Questions](#)
- [Citing Web Soil Survey as a source of soils data](#)



Area of Interest (AOI) | Soil Map | Soil Data Explorer | Shopping Cart

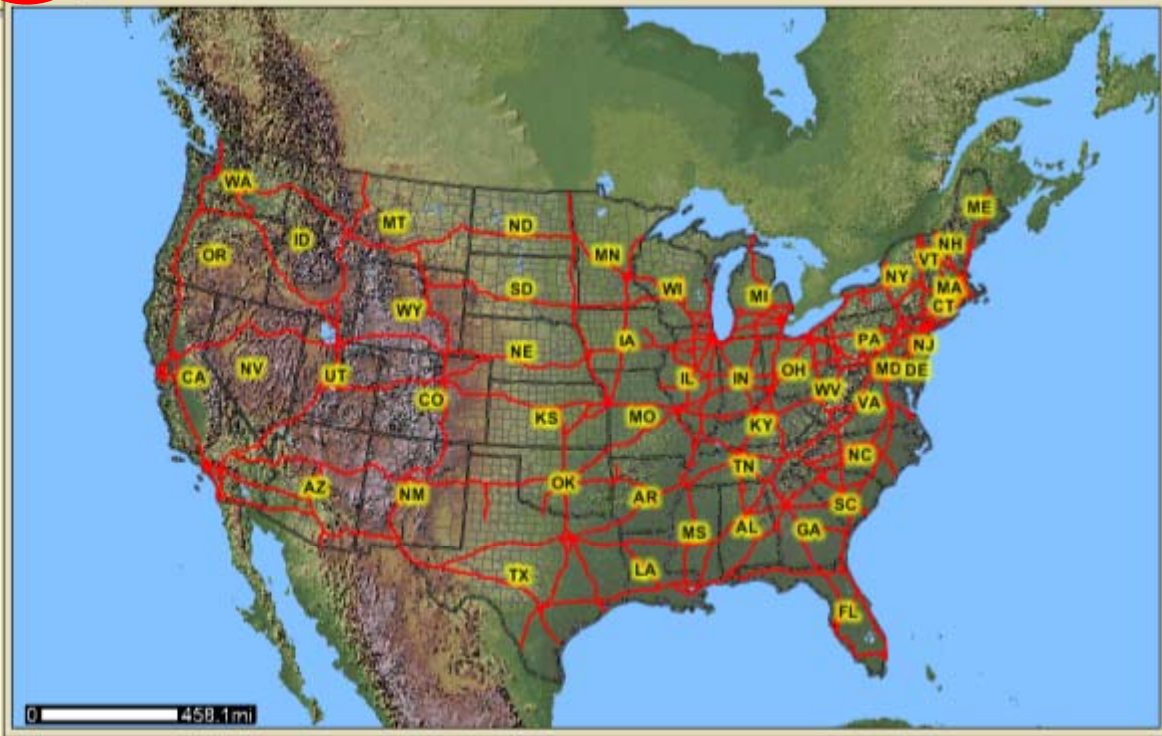
- Quick Navigation
- Navigate By...
- Address
 - State and County
 - Soil Survey Area
 - Latitude and Longitude
 - PLSS (Section, Township, Range)
 - Bureau of Land Management
 - Department of Defense
 - Forest Service
 - National Park Service
 - Hydrologic Unit

Area of Interest Interactive Map

Legend

View Extent: Continental U.S.

Scale: (not to scale)



Web Soil Survey - Microsoft Internet Explorer

File Edit View Favorites Tools Help

Back Forward Stop Refresh Home Mail Print

Address <http://websoilsurvey.nrcs.usda.gov/app/WebSoilSurvey.aspx> Go

Google G- Go Bookmarks Popups play Check AutoLink AutoFill Send to Settings Links

USDA United States Department of Agriculture
Natural Resources Conservation Service

Contact Us Download Soils Data Archived Soil Surveys Preferences Logout Help

Area of Interest (AOI) Soil Map Soil Data Explorer Shopping Cart

Quick Navigation

Navigate By...

- Address
- State and County
- Soil Survey Area
- Latitude and Longitude
- PLSS (Section, Township, Range)
- Bureau of Land Management
- Department of Defense
- Forest Service
- National Park Service
- Hydrologic Unit

Area of Interest Interactive Map

View Extent Continental U.S.

Scale [not to scale]

FOIA | Accessibility Statement | Privacy Policy | Non-Discrimination Statement | Information Quality | USA.gov | White House

Done Internet

Start

Tasks - Microsoft Outlook Web Soil Survey - Home ... Web Soil Survey - Mic... Microsoft PowerPoint - [...]

2:29 PM Tuesday

Area of Interest Properties

Clear AOI

AOI Information

Name

Map Unit Symbols

- Use Soil Survey Area Map Unit Symbols
- Use National Map Unit Symbols

Area (acres) 117.8

Soil Data Available from Web Soil Survey

Humboldt County, Central Part, California (CA600)

Soil Maps Version 1, Mar 14, 2007

Soil Data Version 1, Mar 14, 2007

Clear AOI

Quick Navigation

Navigate By...

- Address
- State and County
- Soil Survey Area
- Latitude and Longitude
- PLSS (Section, Township, Range)
- Bureau of Land Management
- Department of Defense
- Forest Service
- National Park Service
- Hydrologic Unit

Area of Interest Interactive Map

View Extent Continental U.S.

Scale 1:5,650 ± 1 %

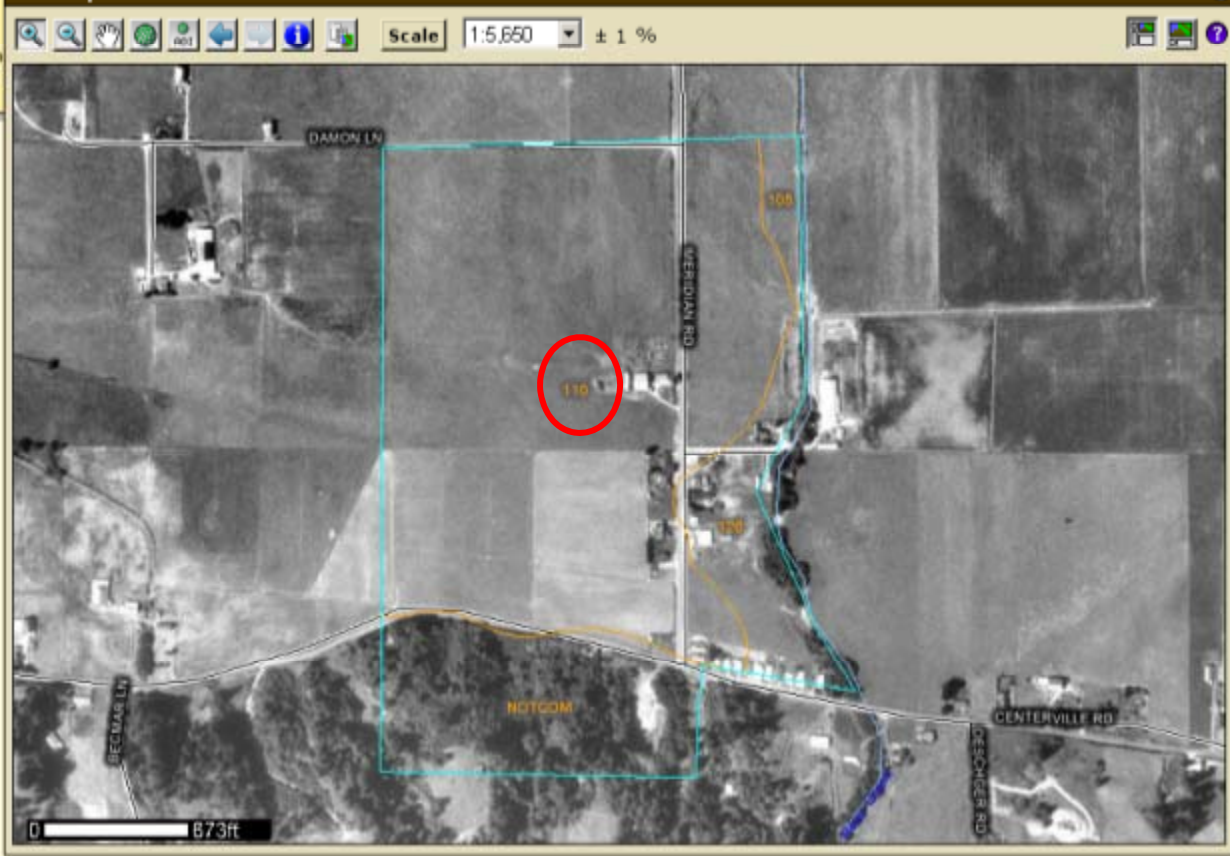


Map Unit Legend

Humboldt County, Central Part, California
 (CA600)

Map Unit Symbol	Map Unit Name	Acres in AOI	Percent of AOI
105	Worswick, 0 to 2 percent slopes	2.3	2.0%
110	Weott, 0 to 2 percent slopes	82.8	70.3%
126	Loleta, 2 to 5 percent slopes	11.1	9.5%
NOTCOM	Mapping not complete	21.5	18.3%
Totals for Area of Interest (AOI)		117.8	100.0%

Soil Map



Options X Hide

- Cover
- Preface
- Contents
- How Soil Surveys Are Made
- Soil Map
 - Soil Map
 - Legend
 - Map Unit Legend
 - Map Unit Descriptions
 - Humboldt County, Central Part, C
 - 105—Worswick, 0 to 2 percent
 - 110—Weatt, 0 to 2 percent slc
 - 126—Loleta, 2 to 5 percent slc
 - NOTCOM—Mapping not comp
- Soil Information for All Uses
 - Soil Reports
 - Construction Materials
 - Source of Reclamation Material
- Soil Information for Hayland/Pastureland
 - Soil Reports
 - Land Classifications
 - Taxonomic Classification of the
 - Land Management
 - Basin, Border, and Furrow Irrig
 - Vegetative Productivity
 - Rangeland Productivity and Pl
- References



A product of the National Cooperative Soil Survey, a joint effort of the United States Department of Agriculture and other Federal agencies, State agencies including the Agricultural Experiment Stations, and local participants

Custom Soil Resource Report for Humboldt County, Central Part, California

Jones Ranch



Google Earth

File Edit View Tools Add Help

Search

Fly To Find Businesses Directions

Fly to e.g., Hotels near JFK

Search input field

Places

Add Content

Layers

View: Core

- Primary Database
 - Terrain
 - Geographic Web
 - roads
 - Traffic
 - Weather
 - 3D Buildings
 - Borders and Labels
 - Gallery
 - Global Awareness
 - Places of Interest
 - More



Image NASA
© 2007 Europa Technologies
© 2007 Tele Atlas
Map data © 2007 DMaps/EI Mercurio

© 2007 Google™

Streaming [|||||] 86%

Eye alt 6835.70 mi



Search

Fly To Find Businesses Directions

Fly to e.g., New York, NY

Places Add Content

- My Places
 - 3D Warehouse
 - No date
 - No models available for this or yet.
 - Eureka.co
- Temporary Places

Layers

View: All Layers

- Primary Database
- Terrain
- Geographic Web
- roads
- Traffic
- Weather
- 3D Buildings
- Borders and Labels
- Gallery
- Global Awareness
- Places of Interest
- More



Search

Fly To Find Businesses Directions

Fly to e.g., New York, NY

Search input field with magnifying glass icon

Places

Add Content

- My Places
- 3D Warehouse
- 7777
- I have no idea
- Eureka, ca
- Temporary Places

Layers

View: All Layers

- Primary Database
- Terrain
- Geographic Web
- roads
- Traffic
- Weather
- 3D Buildings
- Borders and Labels
- Gallery
- Global Awareness
- Places of Interest
- More



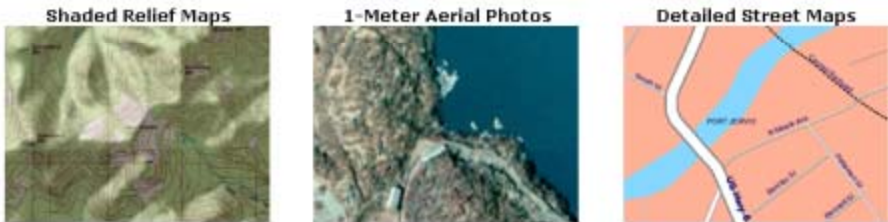
© 2007 Europa Technologies
© 2007 Tele Atlas
Image © 2007 DigitalGlobe
Image NASA

Google

Pointer 40°34'31.01" N 124°17'19.65" W elev 332 ft

Streaming 91%

Eye alt 1733 ft



TopoZone Pro is here!

We're pleased to be introducing our new **TopoZone Pro** service, adding shaded relief maps, high resolution aerial photography, street maps, and a whole lot more to TopoZone. We think **TopoZone Pro** makes TopoZone the complete source for Web maps of all kinds - it's not just for topos any more. Please [take a look](#) at what **TopoZone Pro** provides; you can register for a free demonstration and find out for yourself.

Welcome to TopoZone



Salt Lake City, Salt Lake County, UT
40.761°N, 111.890°W

TopoZone is the Web's center for professional and recreational map users. We've create the Web's **first** interactive topo map of the entire United States, and now we've added Canada, too! And we've spent eight years making our maps the **best** on the Web as well.

In addition to serving maps on the TopoZone, we're also the Web's best source for custom digital topographic data for Web, GIS, and CAD applications, and our **Web Services** system can add our maps directly to your desktop or server through our **OGC WMS** data interface.

You can register for free on our **My TopoZone** page; it's the gateway to adding enhanced **TopoZone Pro** and other services to your TopoZone system.

Get started!
Click to search for your map

View Maps

We've got every USGS topographic map, orthophotomap, and aerial photograph in the entire United States, and complete NRCan topographic maps of Canada. Just type a place name in the search box, pick the state or province, and go! Use the "View Maps" menu for more search options.

If you are looking for trails and trail maps for [hiking](#) and [mountain biking](#), then visit [Trails.com](#). Their maps come from published outdoor guidebooks and should be used in addition to topo maps for heading into the outdoors.

- Place Name
- Street Address
- PLSS
- UTM Coords
- Decimal Degrees
- Deg/Min (GPS)
- Deg/Min/Sec

We couldn't find any place that matched those criteria. Please [try again](#). Be sure to spell out words rather than use abbreviations, and double-check your spelling. For more help, visit the [Help](#) pages.

Browse Topographic Maps and Aerial Photographs

United States of America

Alabama	Alaska	Arizona	Arkansas	California
Colorado	Connecticut	Delaware	District of Columbia	Florida
Georgia	Hawaii	Idaho	Illinois	Indiana
Iowa	Kansas	Kentucky	Louisiana	Maine
Maryland	Massachusetts	Michigan	Minnesota	Mississippi
Missouri	Montana	Nebraska	Nevada	New Hampshire
New Jersey	New Mexico	New York	North Carolina	North Dakota
Ohio	Oklahoma	Oregon	Pennsylvania	Puerto Rico
Rhode Island	South Carolina	South Dakota	Tennessee	Texas
U. S. Virgin Islands	Utah	Vermont	Virginia	Washington
West Virginia	Wisconsin	Wyoming		

Canada

Alberta	British Columbia	International Waters
Manitoba	New Brunswick	Newfoundland and Labrador
Northwest Territories	Nova Scotia	Nunavut
Ontario	Prince Edward Island	Quebec
Saskatchewan	Yukon	

- Topo Maps**
US Map Topos Online in Detail. Try it Free! Unlimited printing. www.trails.com
- Earth Photos & Topo Maps**
Find hi-res photos and topos of any location in the country www.GlobeXplorer.com
- Maps**
Looking for Maps? Find exactly what you want today. Yahoo.com
- Topographical Map Guide**
Find Topographical Maps and Get Terrain and Elevation Info Topographical-Map-Guide.com

Place Name Search

Name State/Prov. County

Type Exact match Begins with Contains



VIEW MAPS GET DATA MY TOPOZONE WEB SERVICES ABOUT US HELP!

Place Name Here's what we found. To view the topo map for any of these locations, click on the Place Name link. If you didn't find what you want, use the form below to try again.

Street Address

PLSS

UTM Coords

Decimal Degrees

Deg/Min (GPS)

Deg/Min/Sec

Place Name	Region	Type	Elevation (feet)	County	Latitude	Longitude	Country
Kneeland	CA	Populated Place	2,129	Humboldt	40.761°N	123.995°W	United States

Browse Topographic Maps and Aerial Photographs

United States of America

- Alabama
- Alaska
- Arizona
- Arkansas
- California
- Colorado
- Connecticut
- Delaware
- District of Columbia
- Florida
- Georgia
- Hawaii
- Idaho
- Illinois
- Indiana
- Iowa
- Kansas
- Kentucky
- Louisiana
- Maine
- Maryland
- Massachusetts
- Michigan
- Minnesota
- Mississippi
- Missouri
- Montana
- Nebraska
- Nevada
- New Hampshire
- New Jersey
- New Mexico
- New York
- North Carolina
- North Dakota
- Ohio
- Oklahoma
- Oregon
- Pennsylvania
- Puerto Rico
- RhodeIsland
- South Carolina
- South Dakota
- Tennessee
- Texas
- U. S. Virgin Islands
- Utah
- Vermont
- Virginia
- Washington
- West Virginia
- Wisconsin
- Wyoming

Canada

- Alberta
- British Columbia
- International Waters
- Manitoba
- New Brunswick
- Newfoundland and Labrador
- Northwest Territories
- Nova Scotia
- Nunavut
- Ontario
- Prince Edward Island
- Quebec
- Saskatchewan
- Yukon

Topo Maps

US Map Topos Online in Detail. Try it Free! Unlimited printing. www.trails.com

Cemetery Management

Mapping, GIS, Record Keeping, Sales tracking, More. Since 1987 www.legacymark.com

Earth Photos & Topo Maps

Find hi-res photos and topos of any location in the country! www.DigitalGlobe.com



Create 3D With A Camera
PhotoModeler software for modeling and measuring from photos
www.photomodeler.com
Ads by Google - Advertise on this site

- VIEW MAPS
- GET DATA
- MY TOPOZONE
- WEB SERVICES
- ABOUT US
- HELP!

Download every USGS Topo Map & Aerial Photograph available here \$9.95

Map and Photo Info
Download Topo Images
Download Photo Images

USGS Topo Maps

- 1:24K/25K Topo Maps
- 1:100K Topo Maps
- 1:250K Topo Maps
- Automatic selection

TopoZone Pro Layers

- Shaded Relief
- Street Maps

Aerial Photos

- Black and White
- Color Infrared

Map Size

- Small
- Medium
- Large

View Scale
1 : 48,000

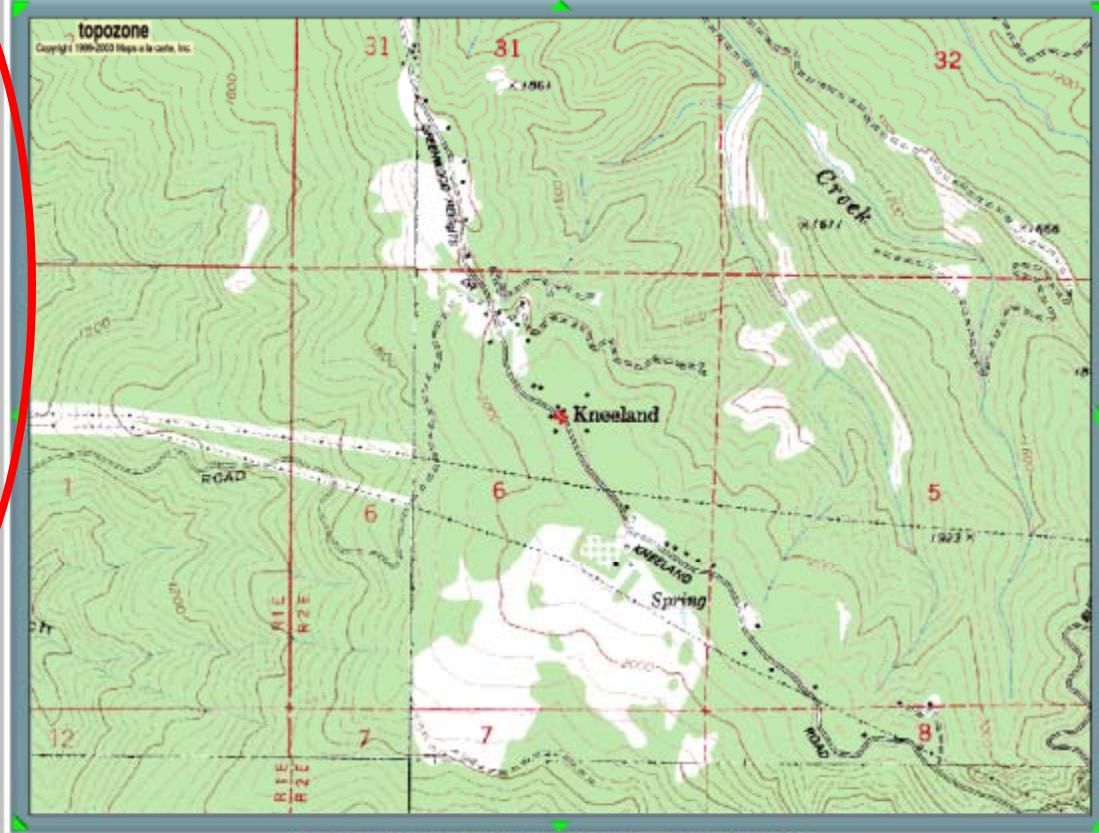
Coordinate Format
UTM

Map Datum
NAD83/WGS84

Show target

myTopo.com
GET A CUSTOM MAP PRINT

Kneeland, USGS KORBEL (CA) Topo Map
TopoZone Pro: View Aerial Photos, Download Unlimited Topos
UTM 10 416036E 4512729N (NAD83/WGS84)
Aerial Images Free Aerial Maps GPS Maps Satellite Pictures Land Maps Aerial Maps



Print Map | Download MapPack | Bookmark Map | Email Map

Ads by Google

ShortSale Secret Revealed
Step-by-Step Guide To Getting Banks To Discount Properties by 40%!
www.ShortSaleMagic.com

ThreeRivers Ca RealEstate
Waterfront lots and homes in Calif Secluded ranches and horse property
www.TeamDiana.com

Commercial Property
Concierge brokerage services from Bend's boutique real estate firm.
www.SteveLarsenProperties.com

Real Estate Leads in CA
Receive cost-effective Leads from Consumers looking for Real Estate.
www.RealPatrol.com

Pardee Homes
Building quality new homes in the Pacific Highlands Ranch community.
www.PardeeHomes.com

Where to get information

- University of California Cooperative Extension
- Local resource conservation district – Humboldt county RCD
- USDA – Natural Resource Conservation Service - (9 steps of planning)
- Private – Holistic Resource Management, Ranching for profit



Websites

- <http://websoilsurvey.nrcs.usda.gov>
- <http://www.topozone.com/>
- <http://earth.google.com/download-earth.html>
- <http://danr.ucop.edu/ucce/r.h11.htm>
- <http://danr.ucop.edu/ucce/r.h12.htm>
- <http://danr.ucop.edu/ucce/r.h13.htm>

Land Management comes down to....



PEOPLE



RESOURCES



MANAGING

Thank you



Questions