



The other 92 percent:

Forest restoration and
community
engagement
in the Mattole
watershed

12 February 2009

Future Forests Conference • Ferndale

Seth Zuckerman

Wild & Working Lands Program

Mattole Restoration Council

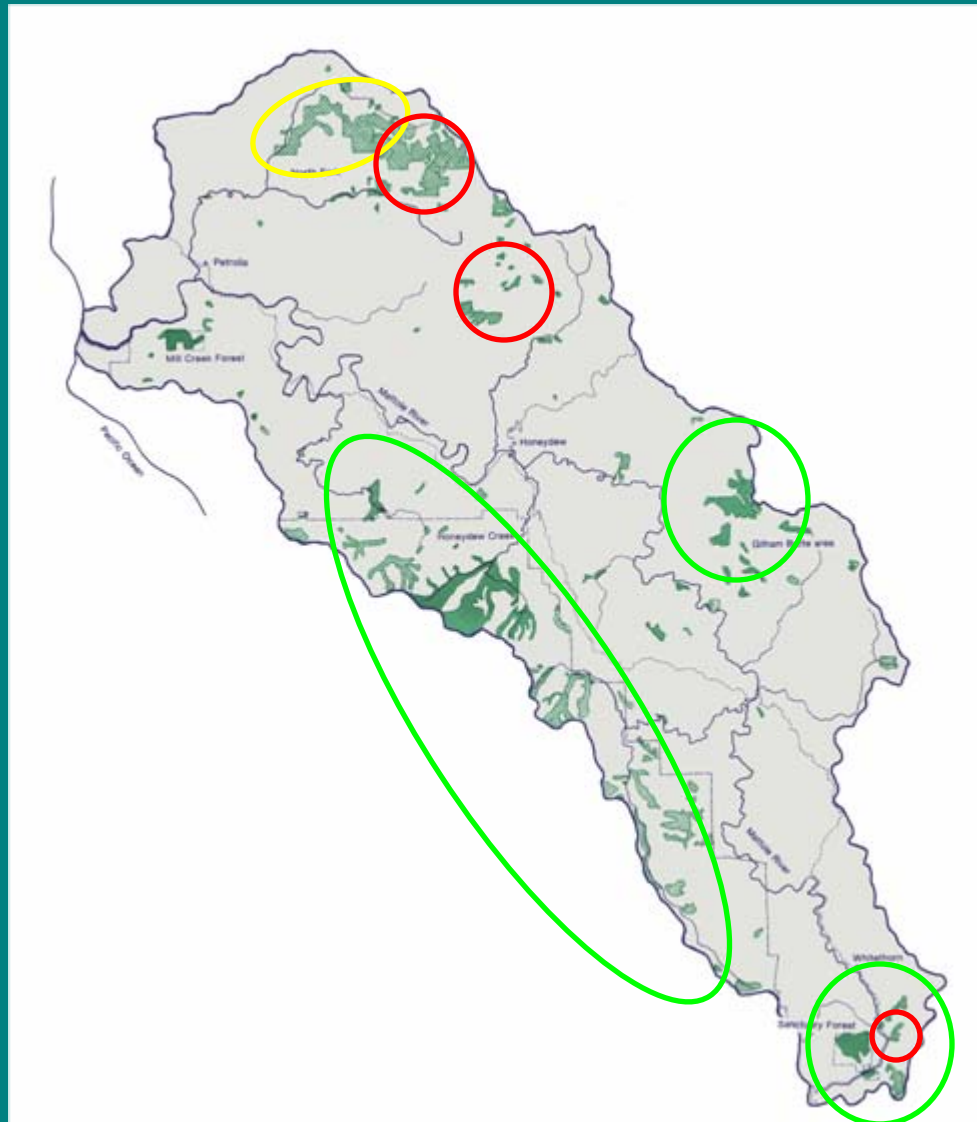
Distribution of Old Growth Coniferous Forests in the Mattole River Watershed



1988 DISTRIBUTION BY OWNERSHIP		Acres	% of 1988 forests
Commercial Timber Companies		6,300	48
BLM or Other Government		6,200	47
Other Private		700	5
Managed by BLM for Intensive Timber Harvest		2,650	20

WHAT'S LEFT AND HOW IT'S MANAGED		Acres	% of 1947 forests
Remaining Old Growth		13,200	9
Managed for Intensive Timber Harvest		9,000	7
Possible Reserves		4,000	3

After 20 years:



Protected:
6%

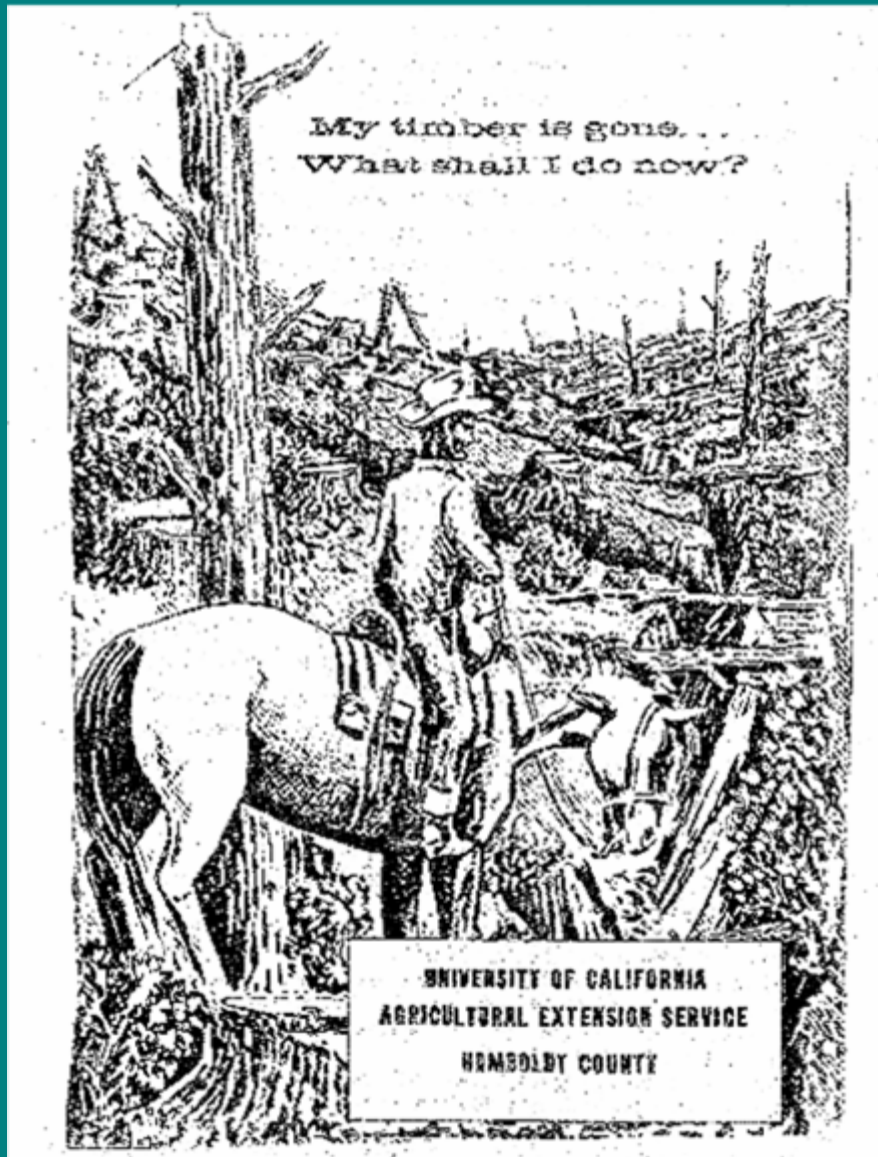


Reprievied:
2%



Cut:
1%





**Second
forestry
focus:**

**upslope
reforestation**

Pamphlet dated 1956,
by Humboldt County Forest Adviser
William Pine

Planting stump meadows



16 years go by...



Reforestation as part of watershed restoration



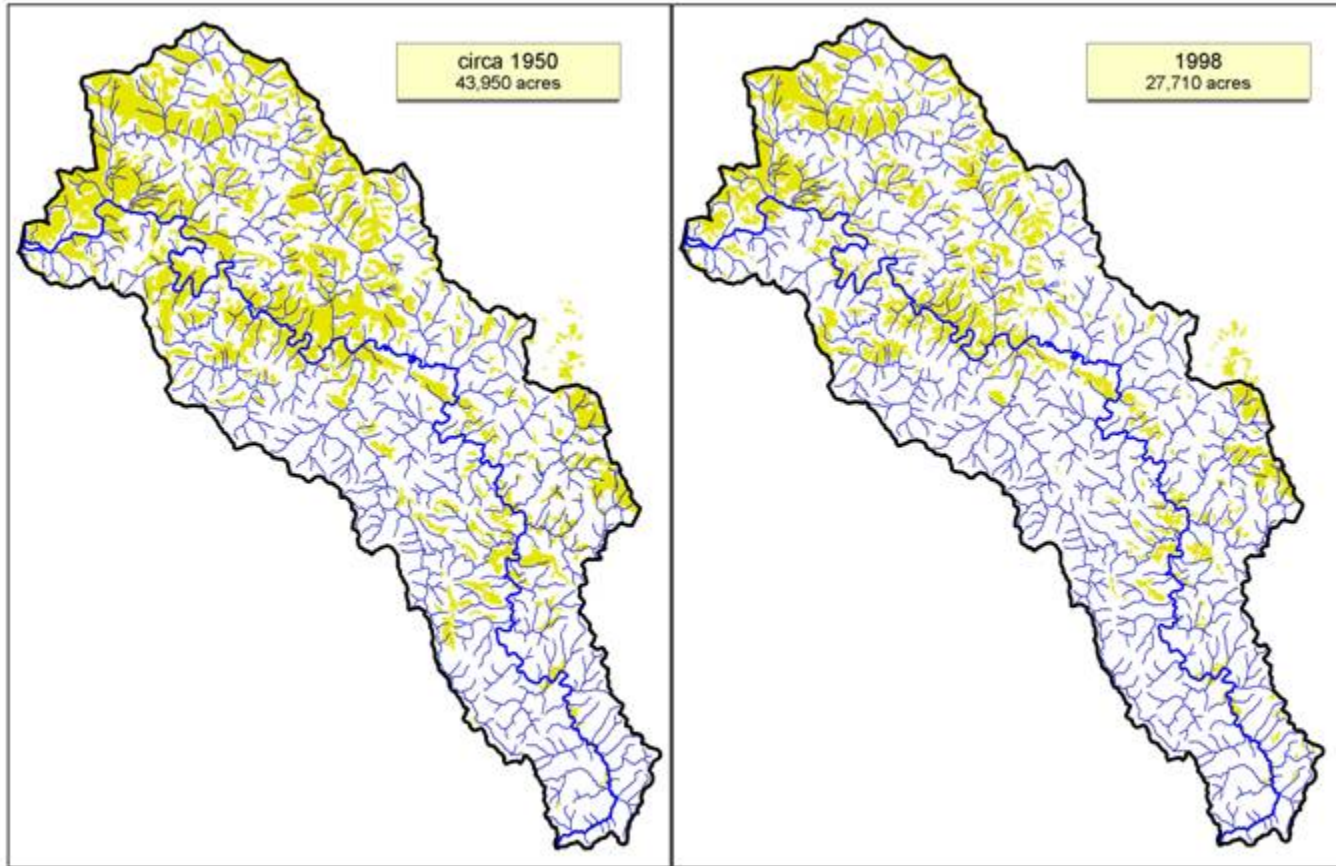
1984

2005



What changed?

Mattole Grassland Distribution Compared: circa 1950 and 1998



0 2.5 5 Miles
Scale = 1:1,315,000

Mattole Restoration Council GIS
Sept 10, 2007
watershed plantgrass_change.mxd

Good Roads, Clear Creeks



Our first widespread service program
40 percent of the watershed surveyed
Working from the top down

Fire hazard reduction — a point of commonality

Upper Mattole

Fire Plan



July 15, 2004

Lower Mattole

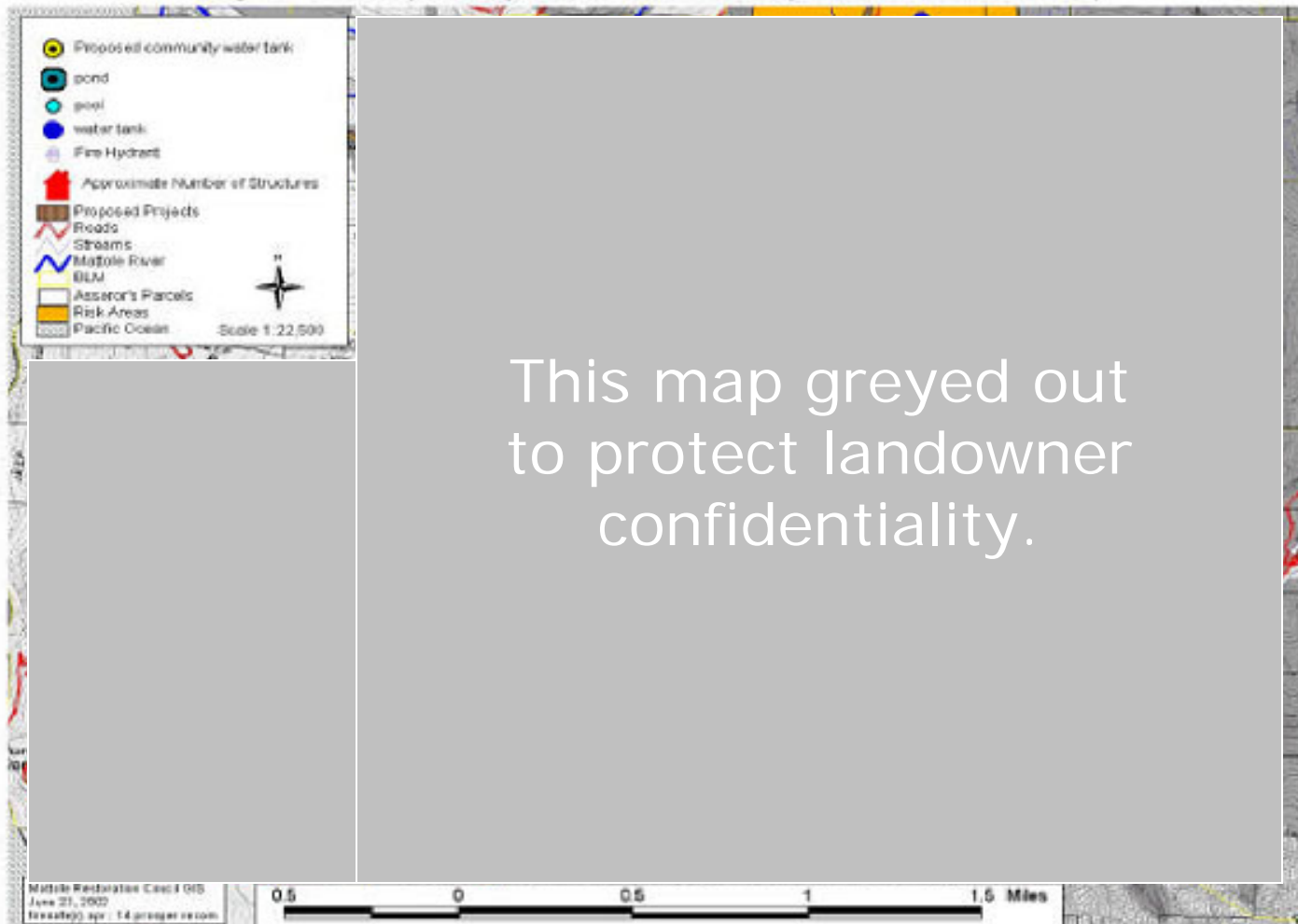
Fire Plan



September 2002

Fire atlas for fire-fighters

Figure 14: Prosper Ridge Recommended Projects and Fire Risks Map



Shaded fuel breaks



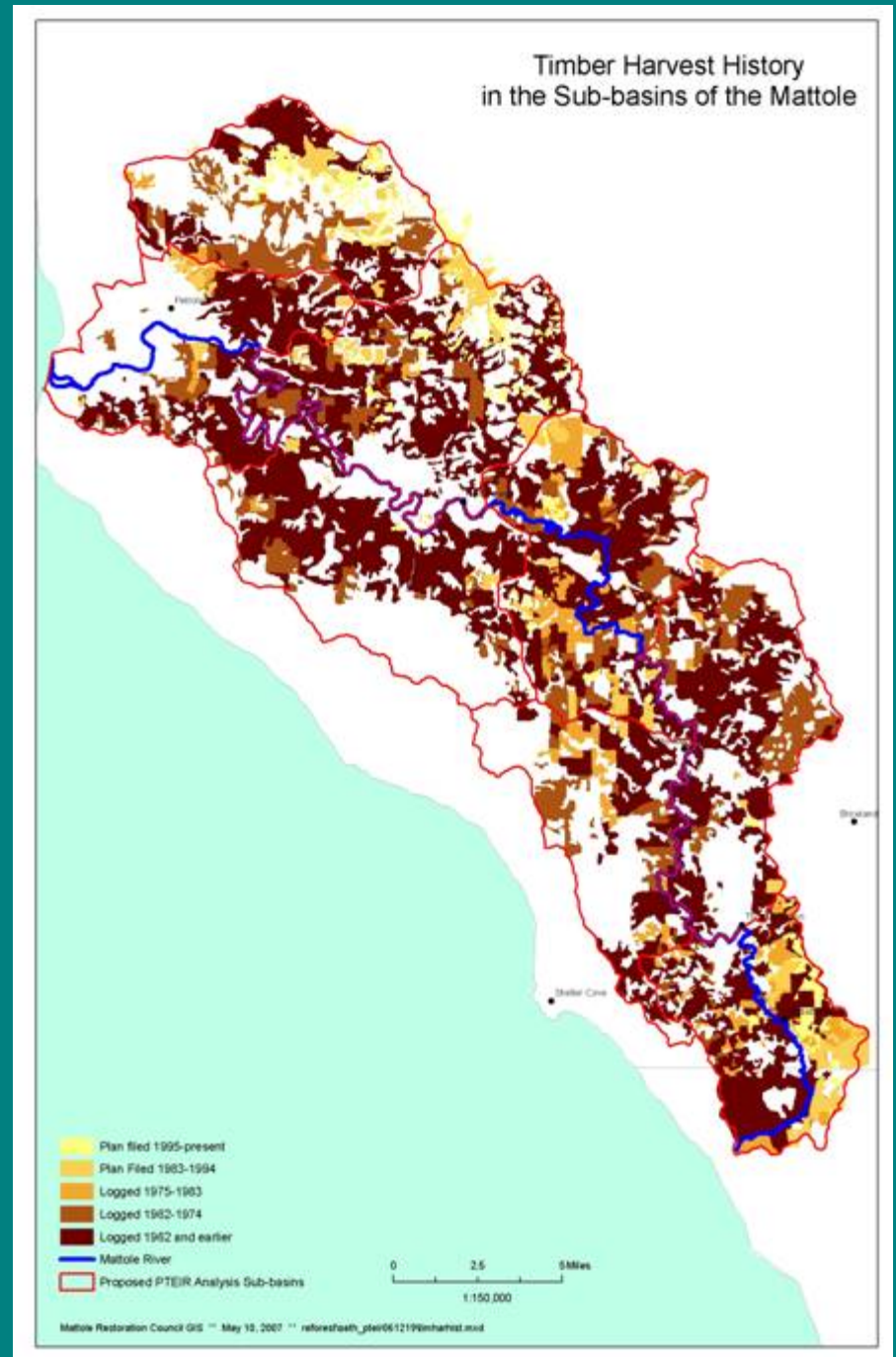
Helping landowners navigate agency programs & permits



Riparian ecosystem restoration



Looking ahead to second-growth harvest



Light-touch timber harvest

- The bargain: reduced paperwork and “EZ form” planning in return for using lower-impact prescriptions
- Entirely voluntary: expands options available to landowners
- Expected savings of 40 to 65% in plan costs
- ‘Program Timberland Environmental Impact Report’ — PTEIR

Are landowners interested?

- 500 surveys sent to Mattole Landowners
- 116 (23%) returned
- 51% would consider harvesting timber
 - Among owners of 160+ acres: 80%
 - 75% would utilize PTEIR in next 10 years

And here's why...

Among those who'd wanted to harvest, but didn't

- 43% cited permitting costs as "extremely important obstacle" to management.
- Other obstacles:
 - Distance to mills (37%), and
 - High harvest costs (30%).

Not your average THP

- Uneven-age management only:
 - No openings over 2.5 acres
 - Leave some trees in openings 1-2.5 acres
- Leave residual old-growth (pre-1850)
- No-cut buffers on Class I & II streams
- No herbicide use
- Minimal new road-building (less than 1000')

What's changed?

- **Emphasis on second-growth**
- **Service to landowners**
- **Watershed protection still central**
- **Sustainable harvest
for local self-reliance**

