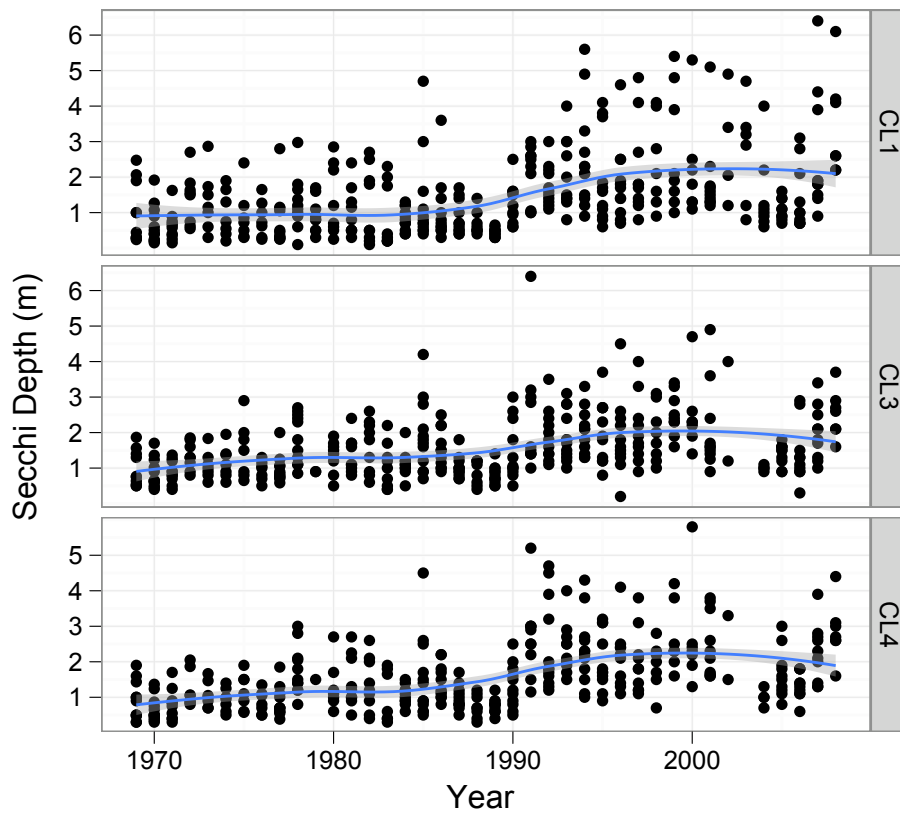
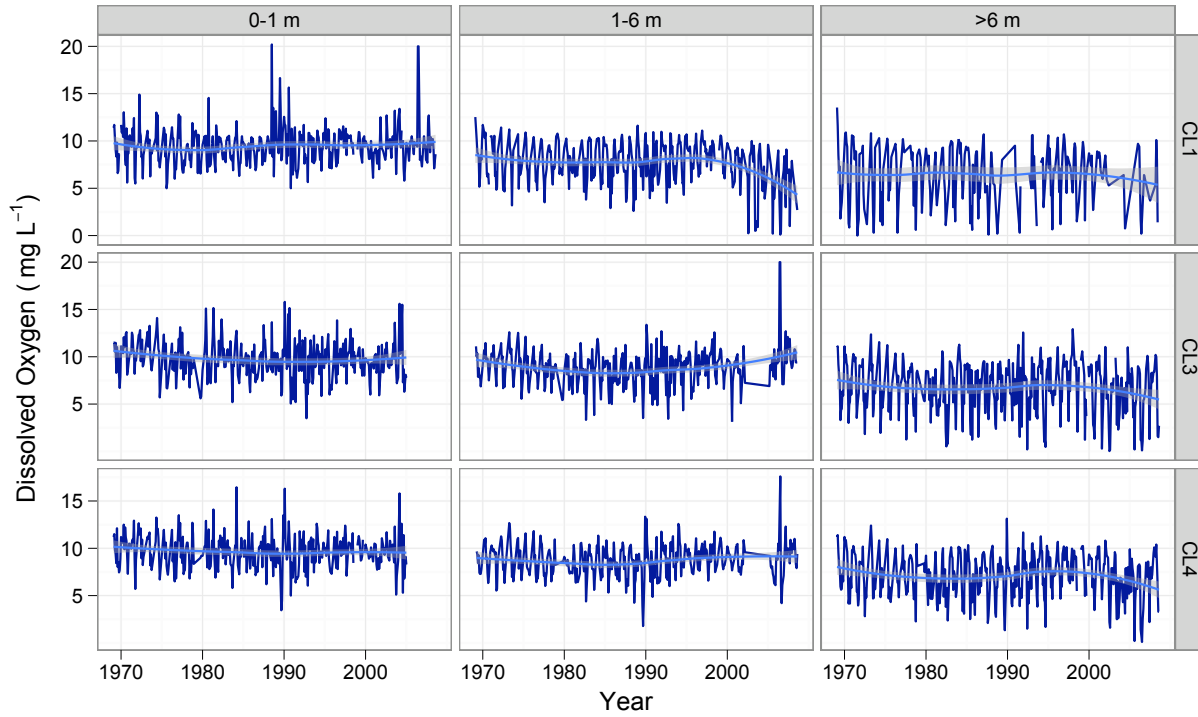


# Clear Lake Historical Data Analysis

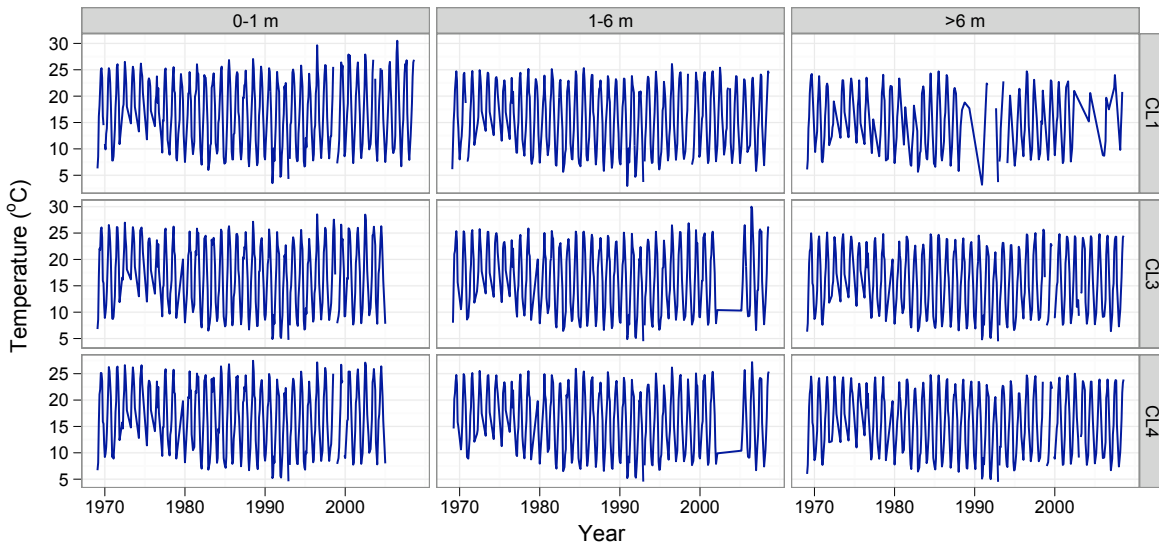
## Appendix

**Fig. S1:** Monthly Secchi depth in Clear Lake recorded from 3 sampling stations (CL1, CL2, CL4) between 1969 and 2008. Dots represent Secchi recordings within a single year. Blue line displays a loess fit  $\pm$  standard error.

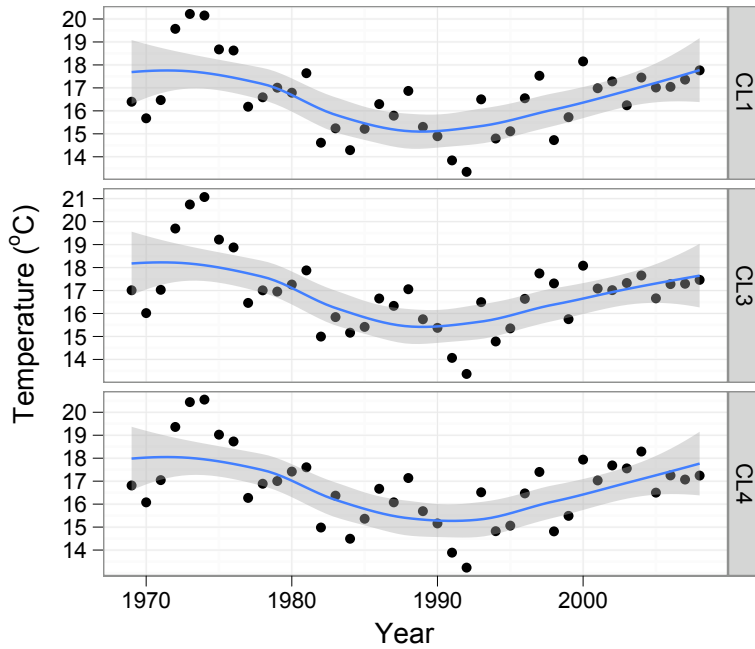




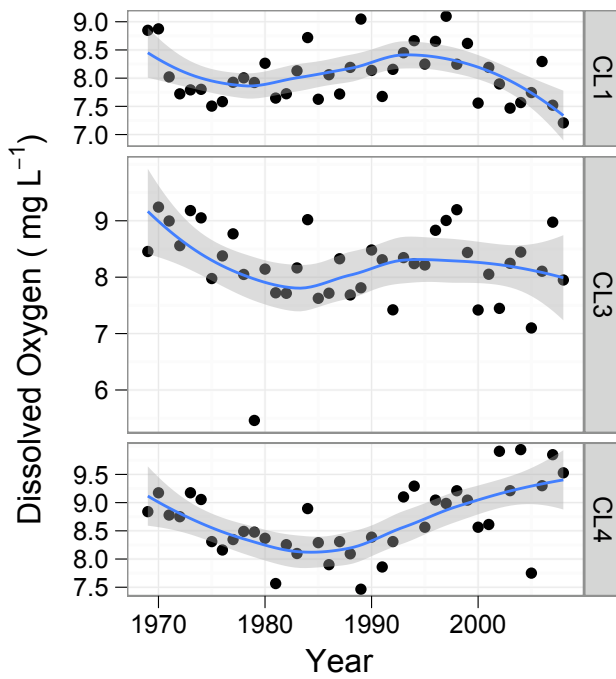
**Fig S2:** Average monthly Dissolved oxygen in Clear Lake at different depth strata recorded at 3 sampling stations (CL1, CL2, CL4) between 1969 and 2008. Blue line displays a loess fit  $\pm$  standard error.



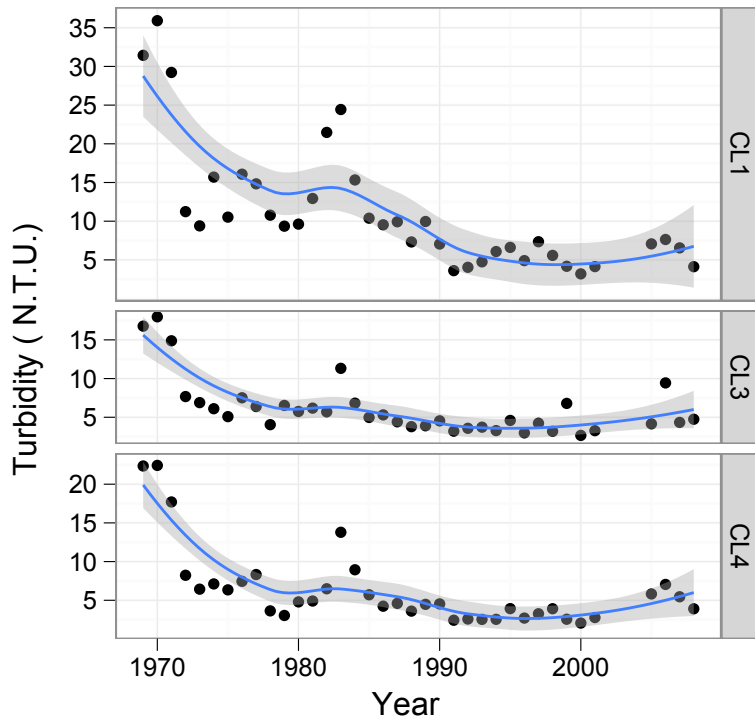
**Fig. S3.** Monthly temperature by depth and stations between 1969 and 2008.



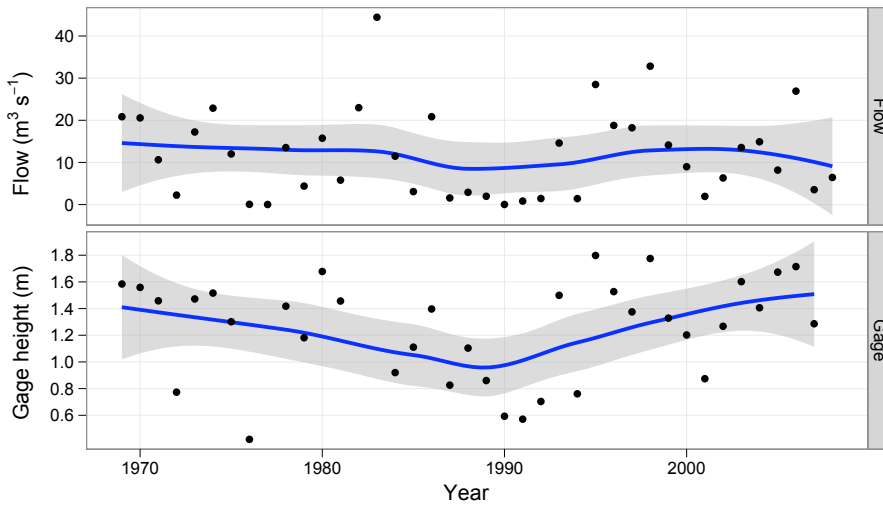
**Fig. S4.** Annual-average (April - October) of temperature by stations in Clear Lake between 1969 and 2008.



**Fig. S5.** Annual-average (April - October) of dissolved oxygen by stations in Clear Lake between 1969 and 2008.

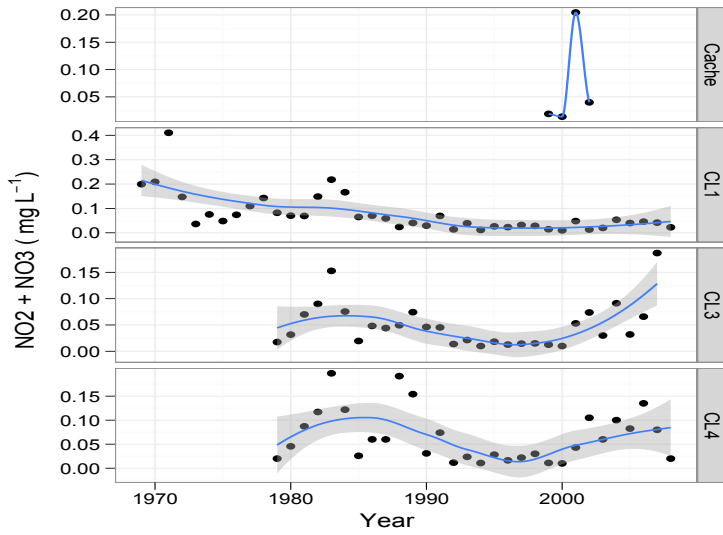


**Fig. S6.** Annual-average (April - October) turbidity by stations in Clear Lake between 1969 and 2008.

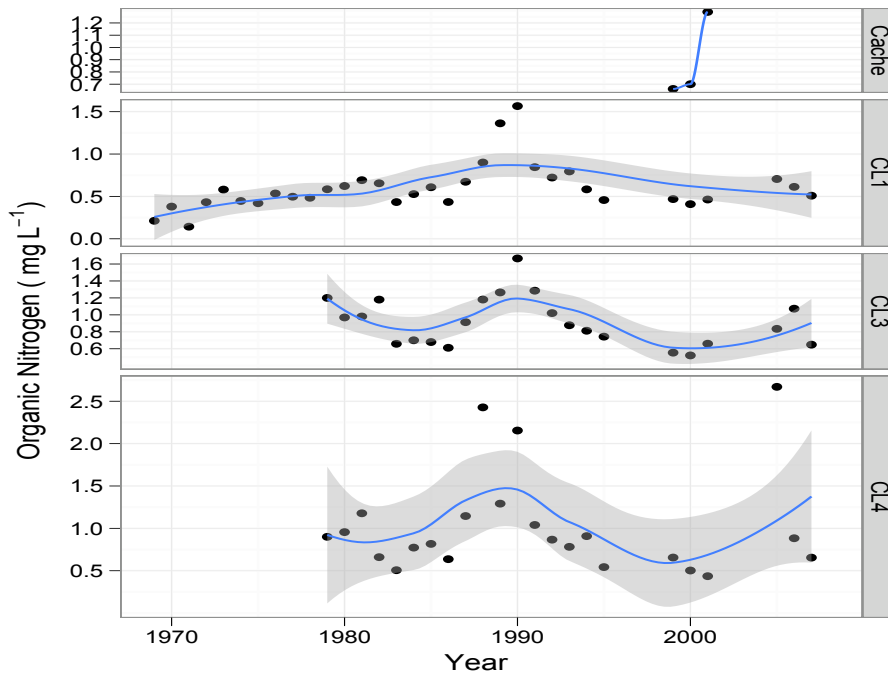


**Fig. S7.** Annual average of outflow of Cache Creek near Lower Lake and lake surface level (Gage height) from Clear Lake during the monitoring sampling program (1968 - 2008).

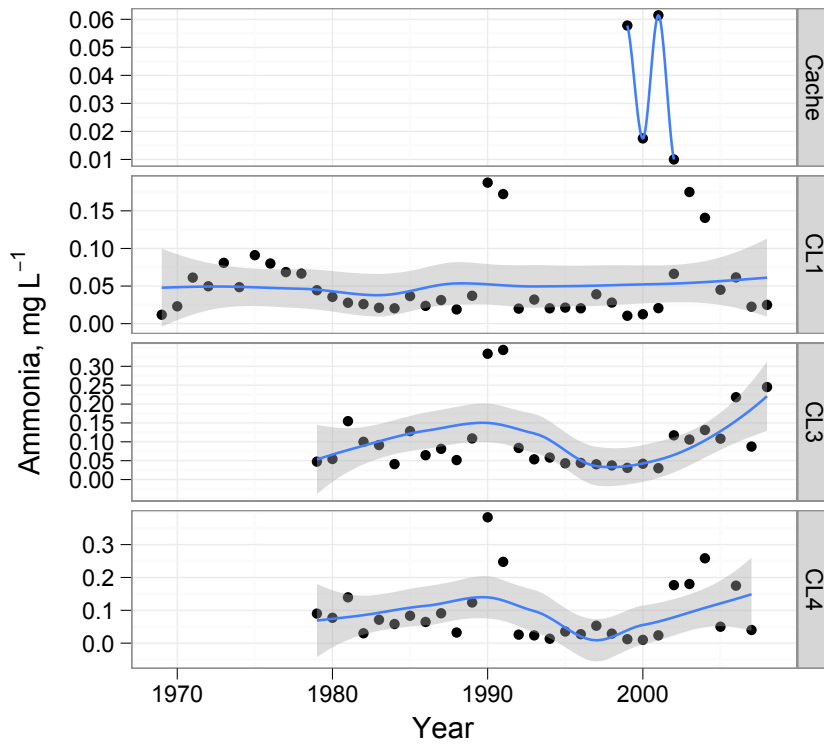
### Chemical variables



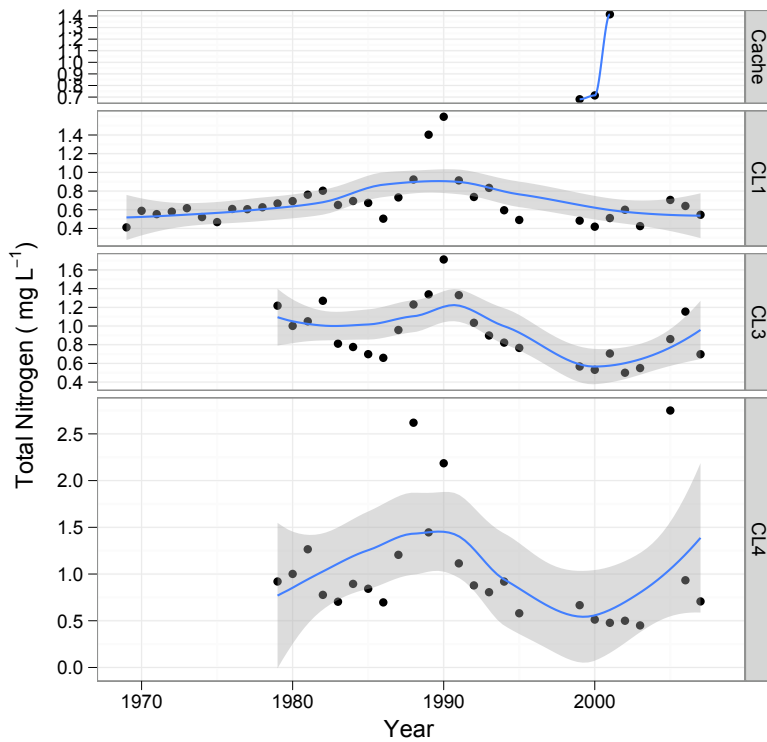
**Fig. S8.** Annual-averaged nitrate and nitrite concentration at each sampling station.



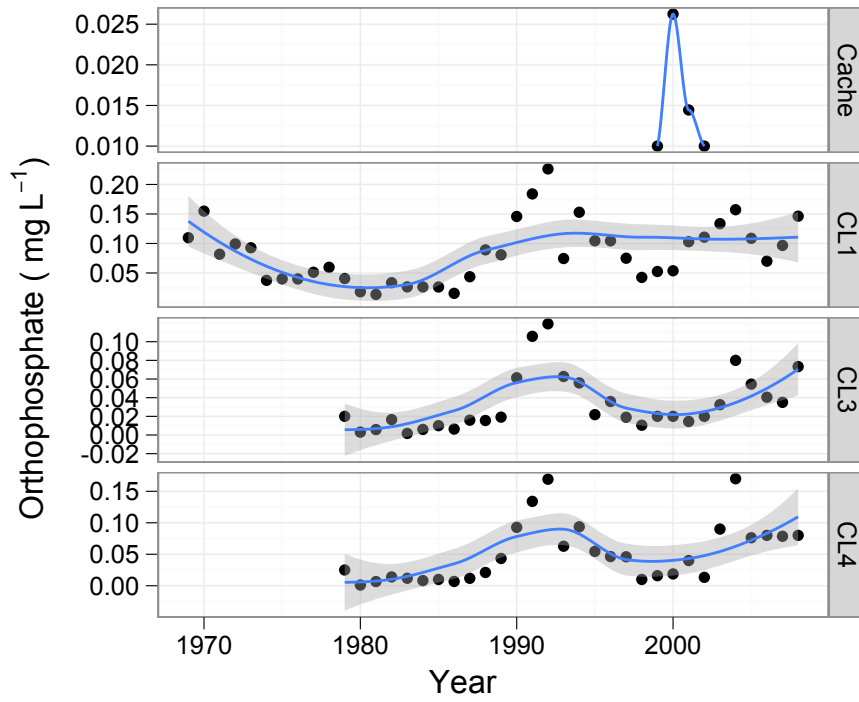
**Fig. S9.** Annual-averaged nitrate and nitrite concentration at each sampling station.



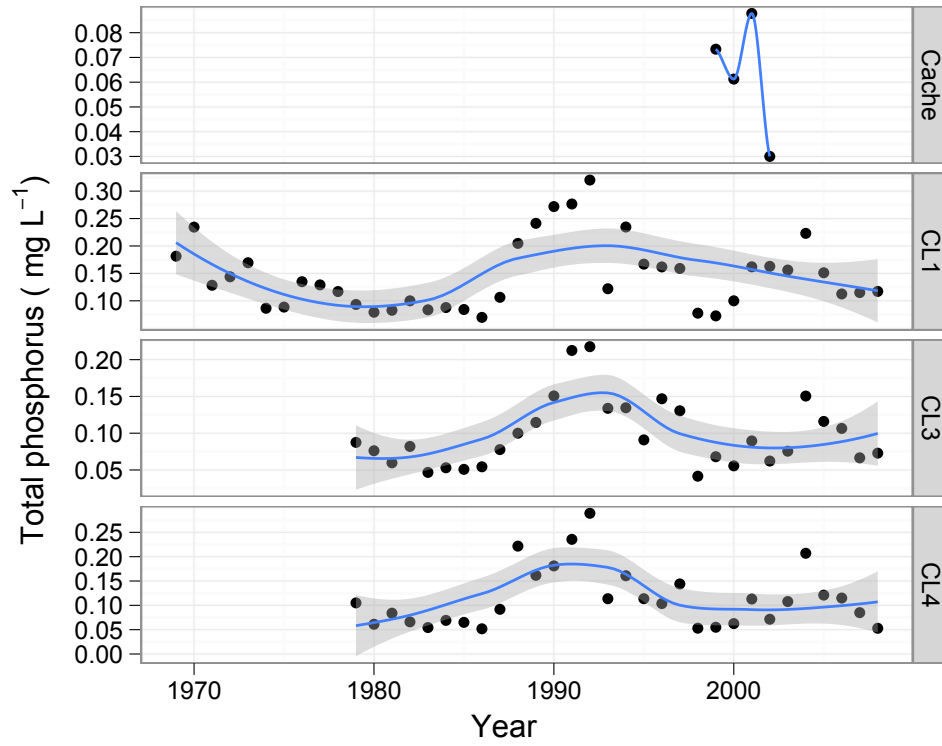
**Fig. S10.** Annual-averaged ammonia concentration at each sampling station.



**Fig. S11.** Annual-averaged TN concentration at each sampling station.



**Fig. S12.** Annual-averaged Orthophosphate concentration at each sampling station.



**Fig. S13.** Annual-averaged TP concentration at each sampling station.



## Vector Control Data - Water Quality

### Temperature

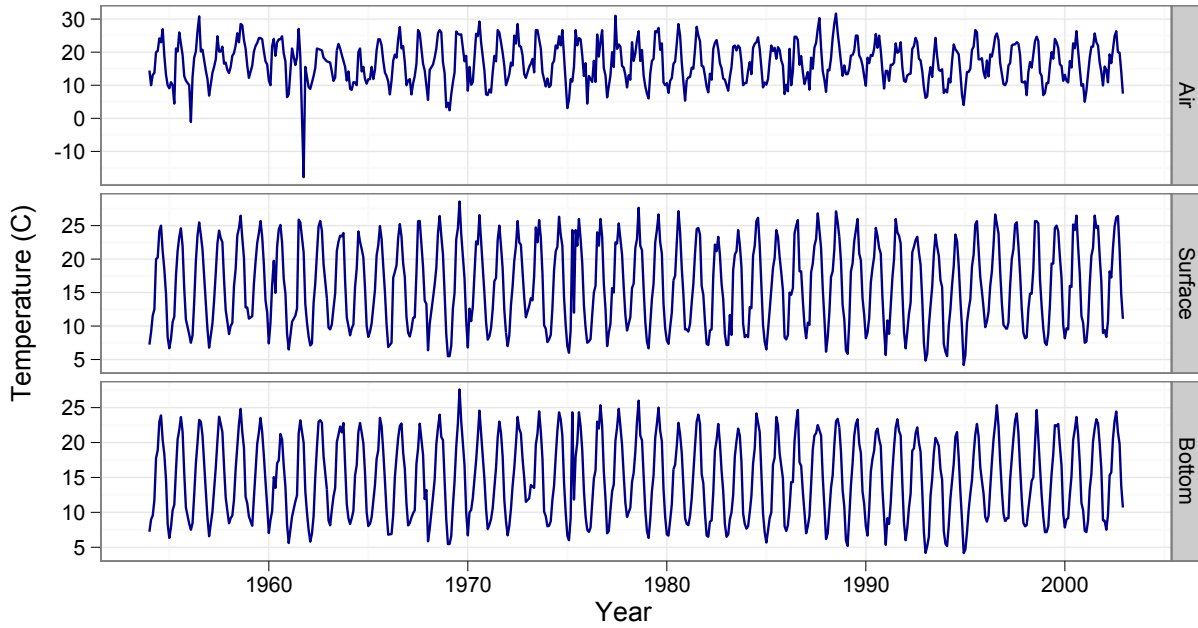


Fig. S 14. Monthly-averaged temperature across all stations (R3S5, R4S9, R5S13).

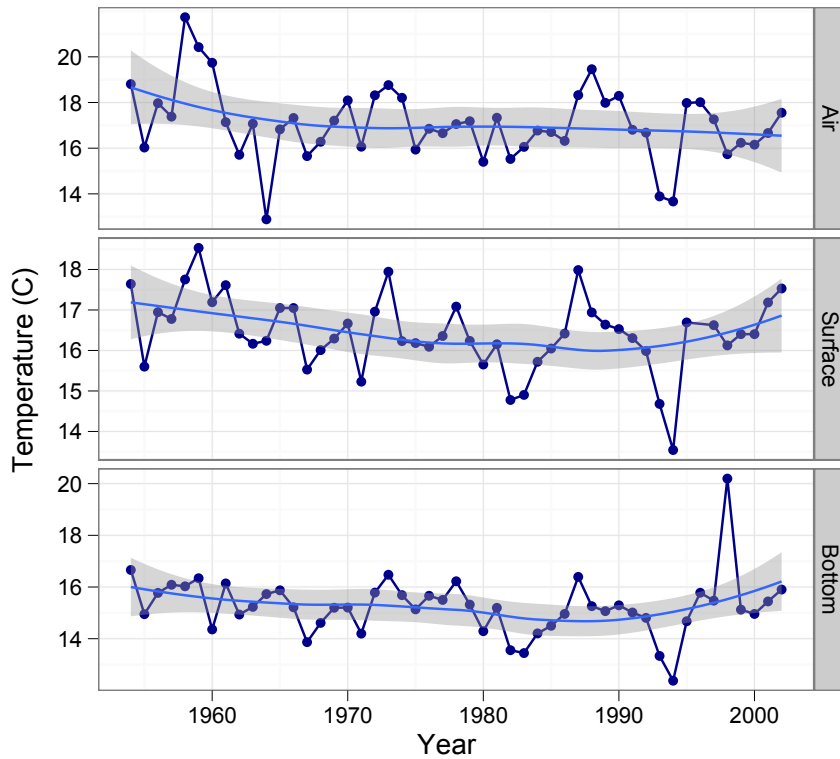
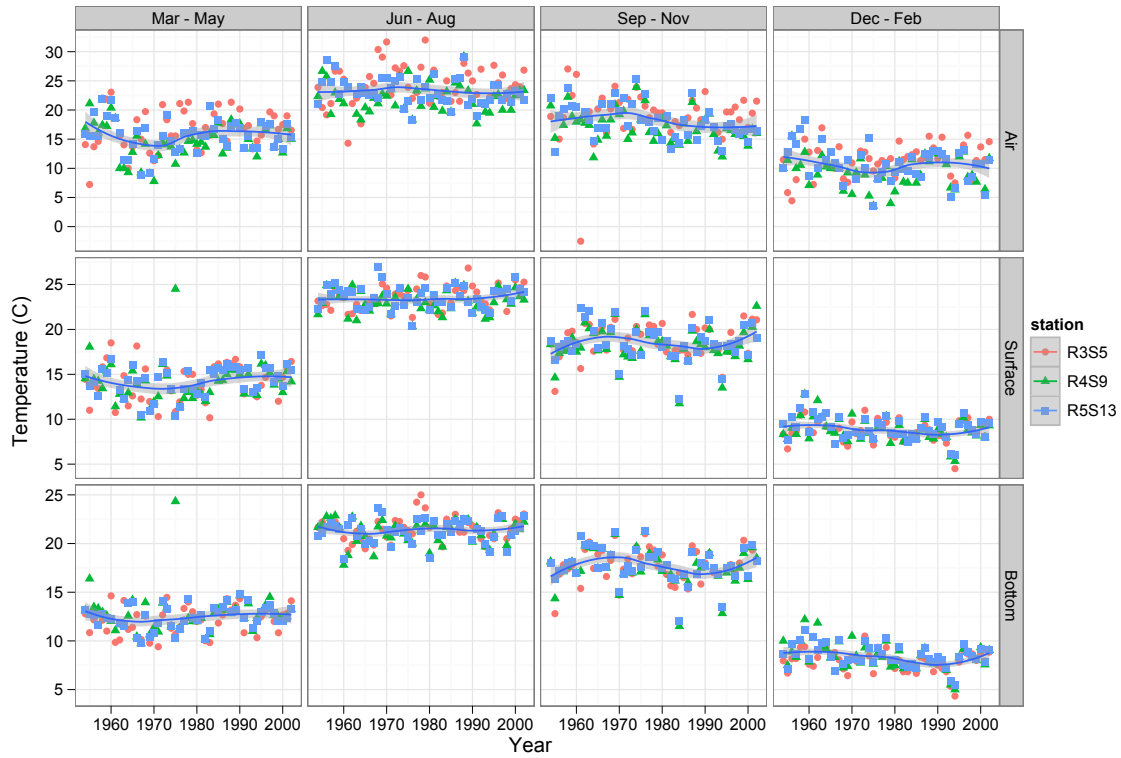
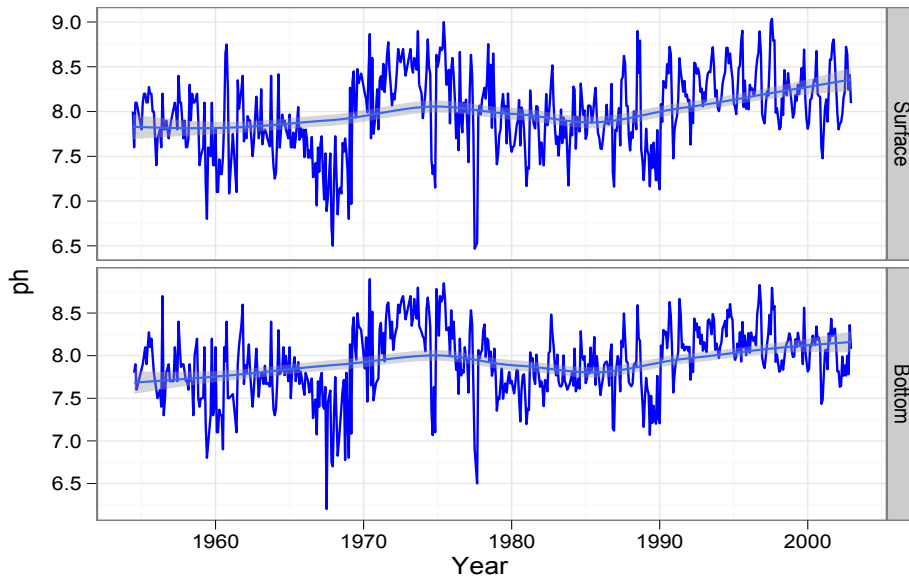


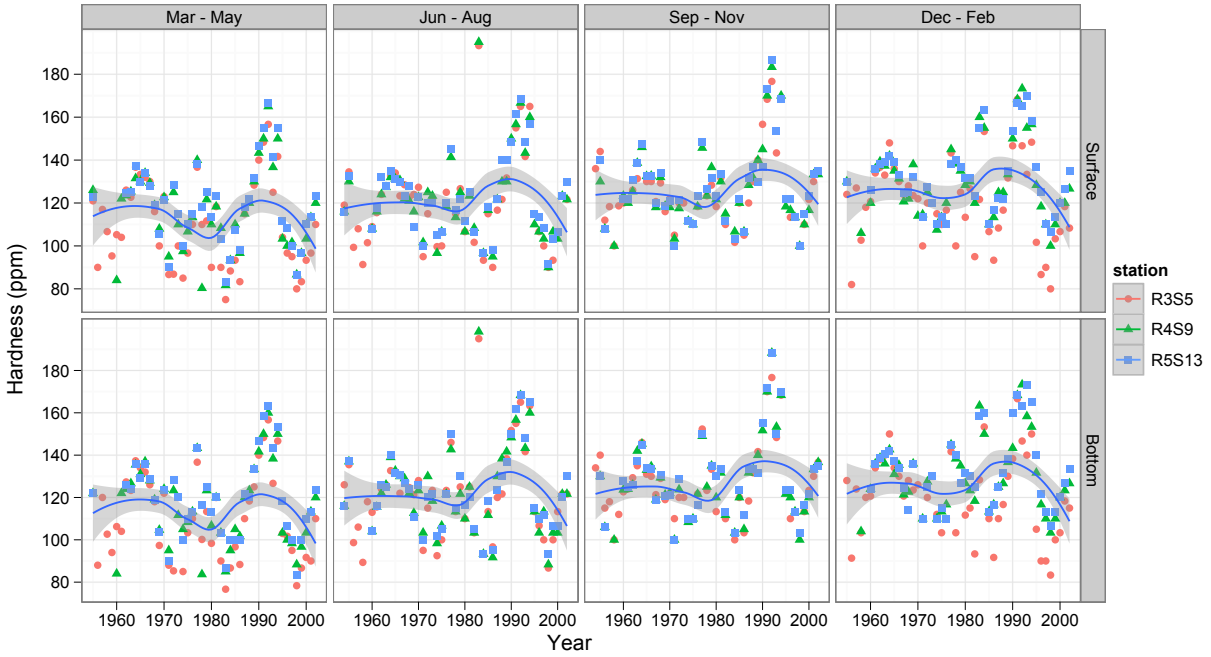
Fig. S15. Annual-averaged temperature across all stations (R3S5, R4S9, R5S13).



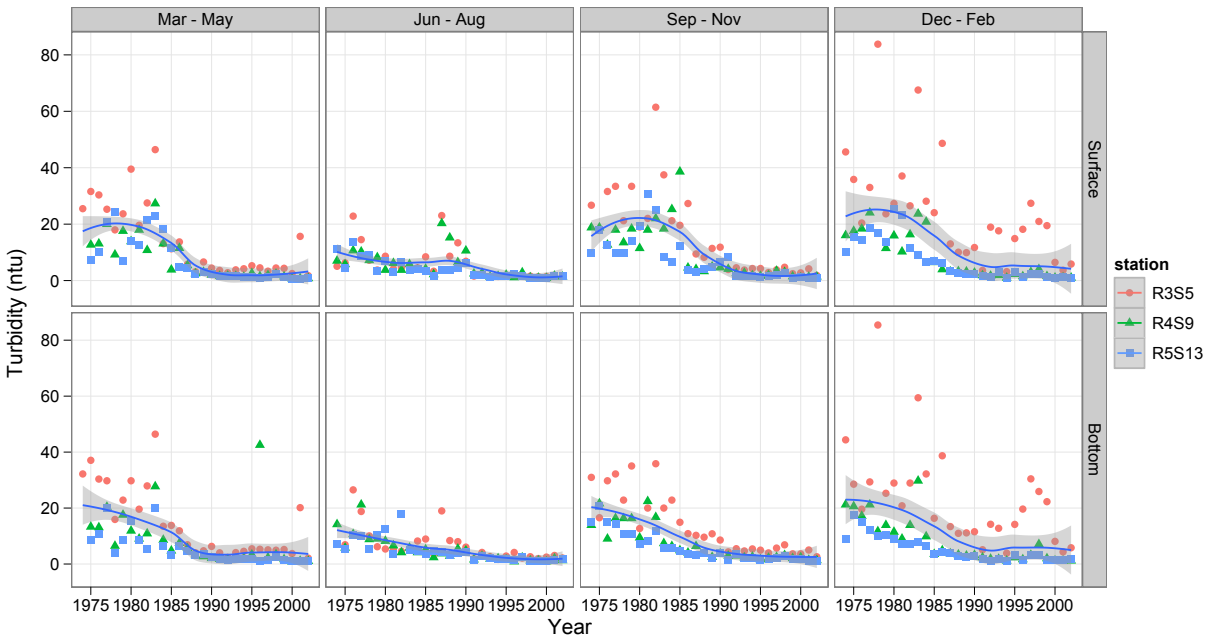
**Fig. S16.** Annual-averaged Air and water temperature (surface and bottom) by season and stations in Clear Lake.



**Fig. S17.** Monthly-averaged pH across all stations (R3S5, R4S9, R5S13).



**Fig. S18.** Hardness by quarter and sampling stations (R3S5, R4S9, R5S13).



**Fig. S19.** Annual-averaged turbidity (surface and bottom) by season and stations in Clear Lake.

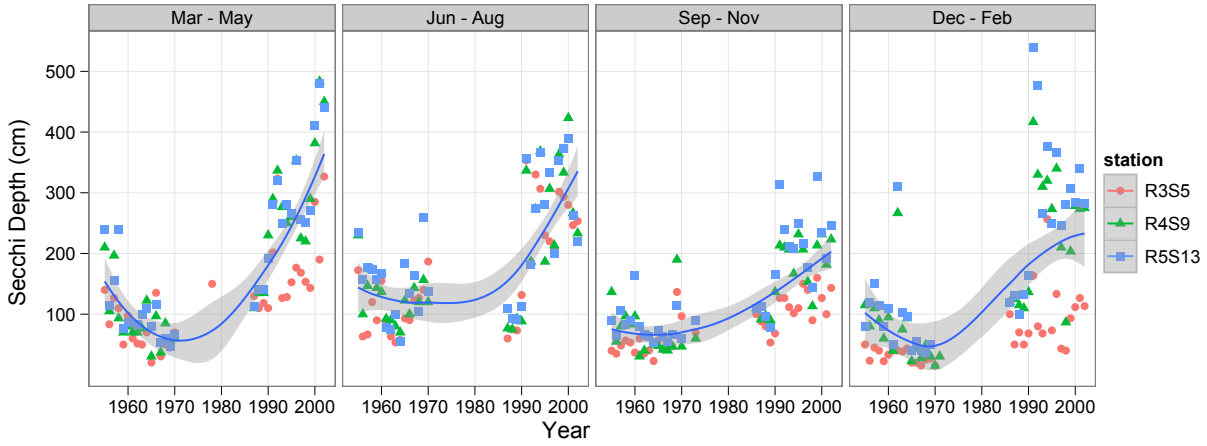


Fig. S20. Annual-averaged secchi depth by season and stations in Clear Lake.

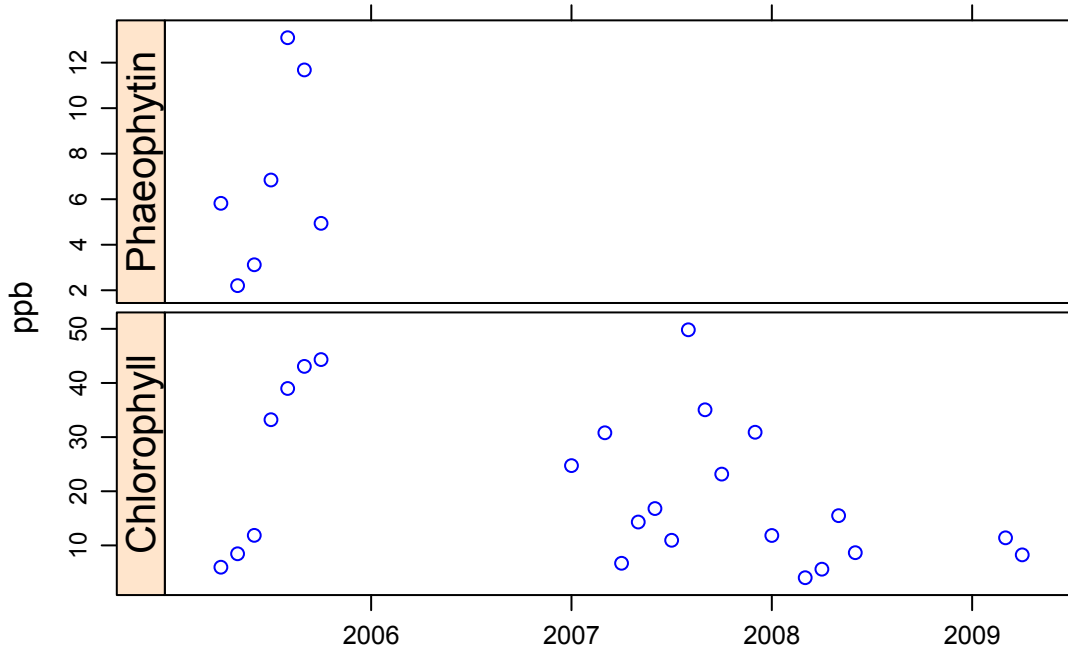
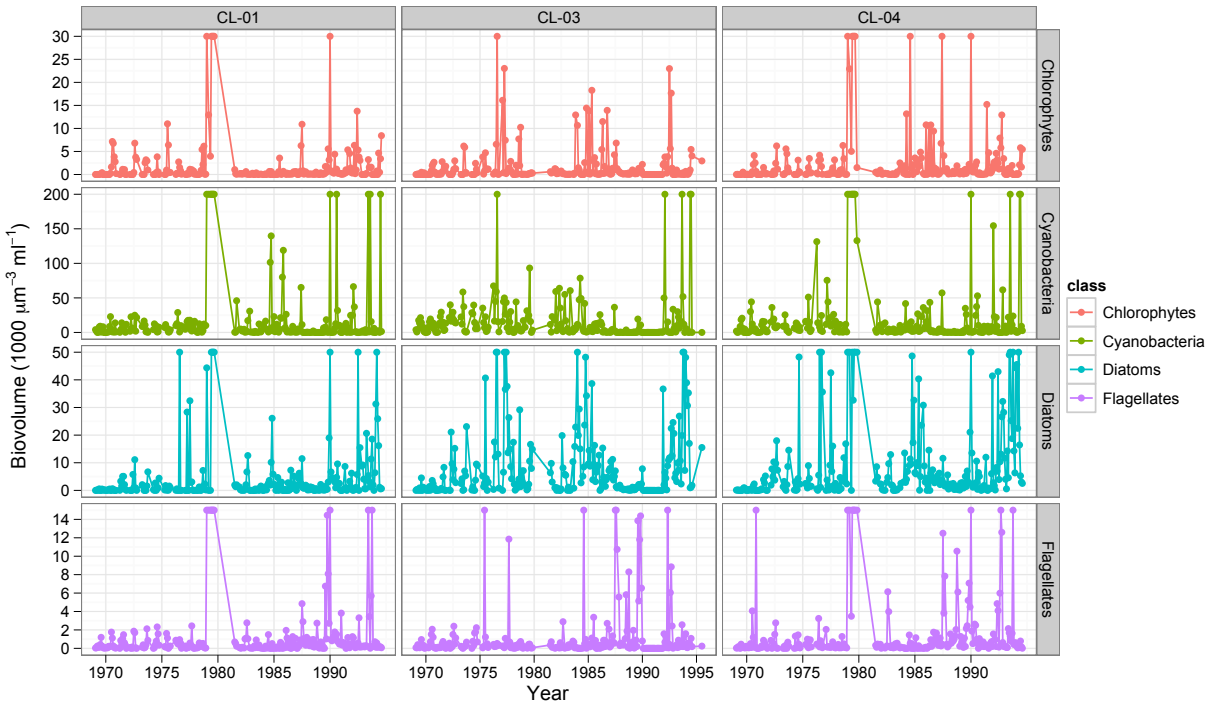


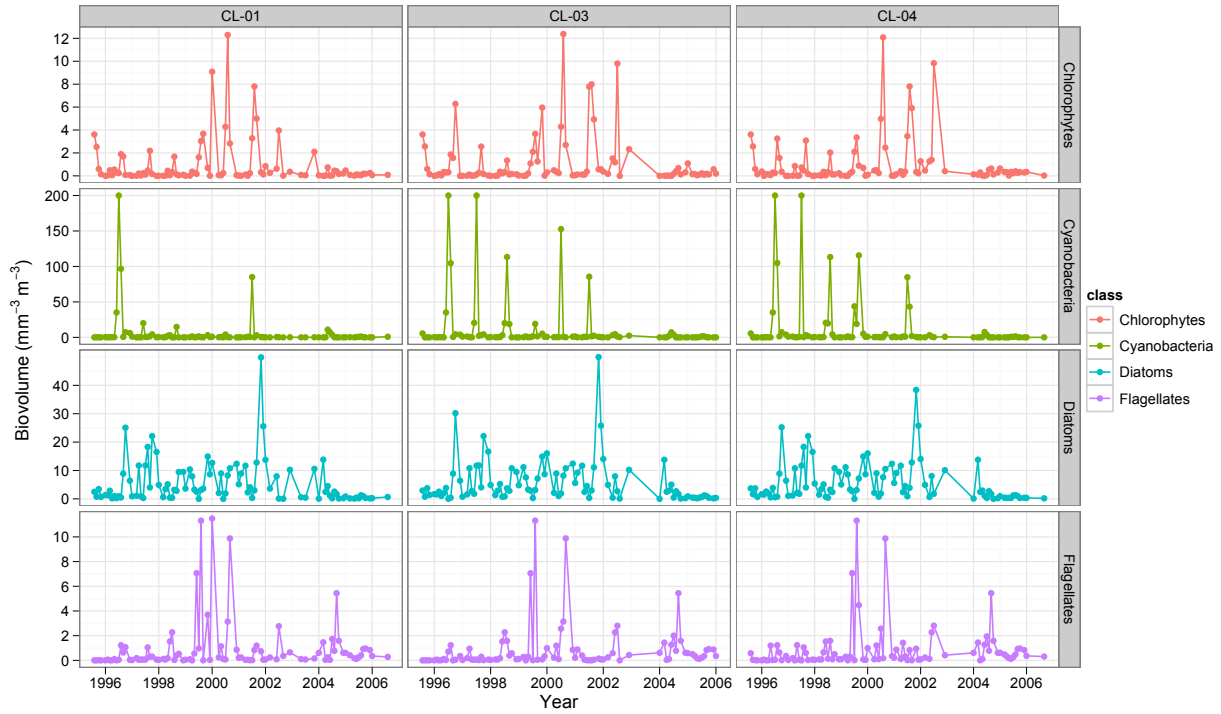
Fig. S21. Chlorophyll and Phaeophytin (in ppb) concentration in Clear Lake from 2005 to 2009.

## Phytoplankton 1969 - 1994

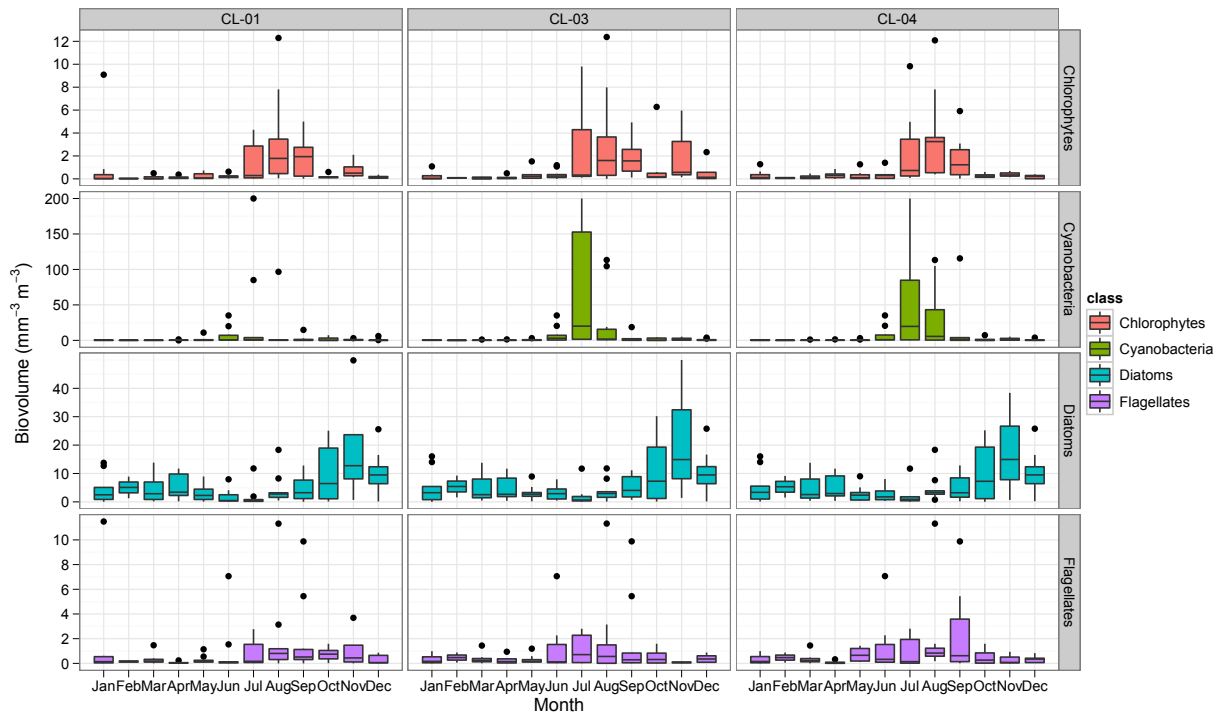


**Fig. S22.** Monthly-averaged phytoplankton by major taxonomic group and stations from 1969 - 1994. For a better illustration of the pattern, a maximum value was set for each taxonomic group (Chlorophytes = 30, Cyanobacteria = 200, Diatoms = 50, Flagellates = 15), therefore values for those dates may be much higher.

## Data 1995 - 2006

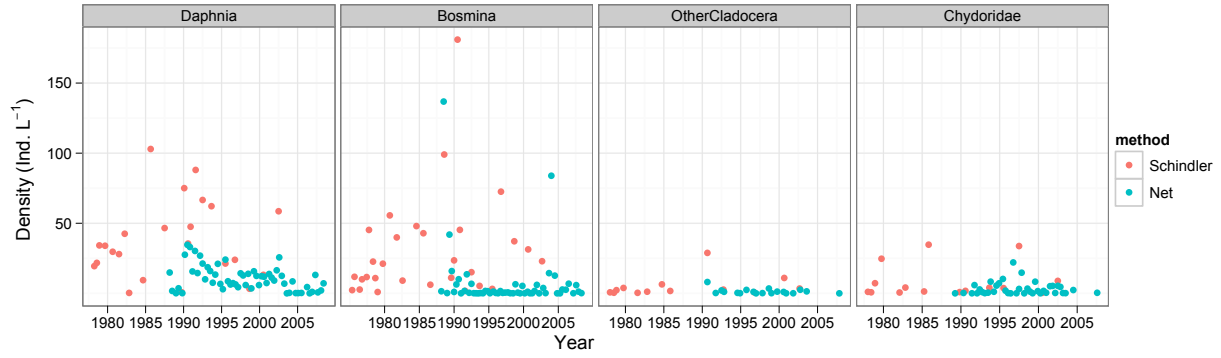


**Fig. S23.** Monthly-averaged phytoplankton by taxonomic groups and sampling stations.

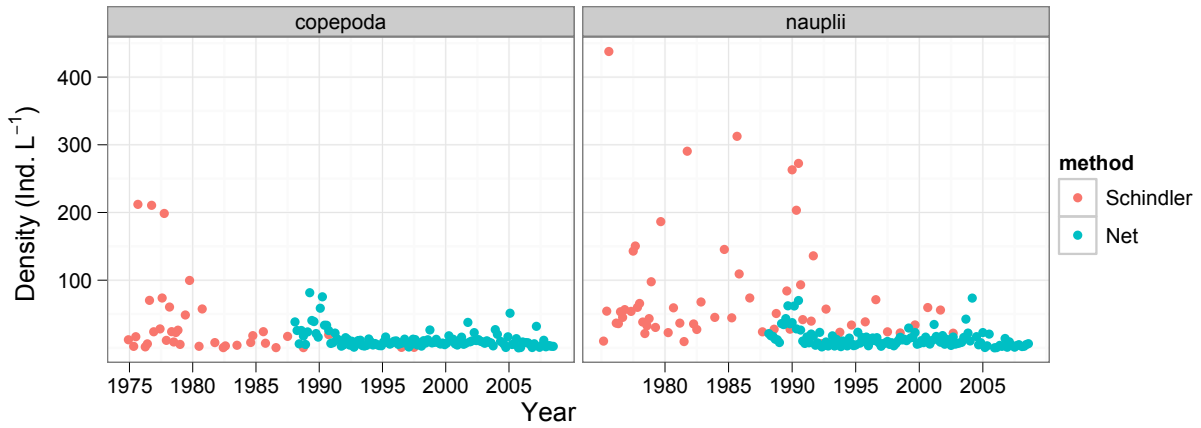


**Fig. S24.** Boxplots of monthly phytoplankton biovolume by taxonomic groups and sampling stations.

## Zooplankton



**Fig. S25.** Comparison between Schindler and Tow Net zooplankton data.



**Fig. S26.** Comparison between Schindler and Tow Net zooplankton data.

Clear Lake Report 2010 - Appendix

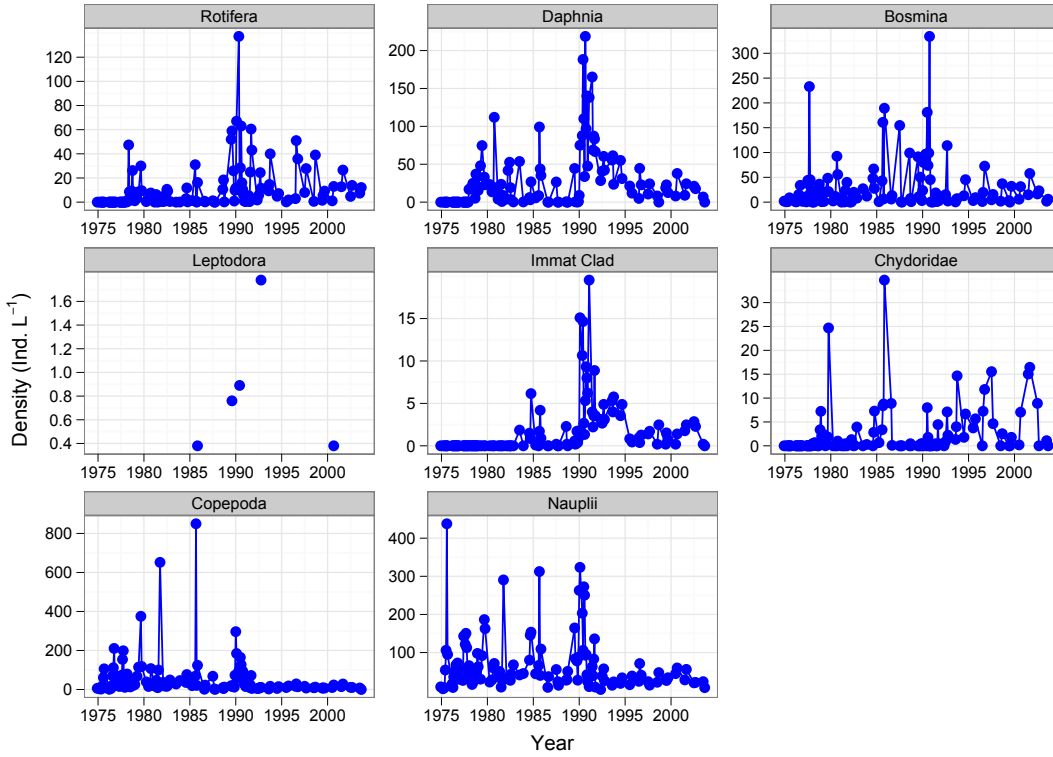


Fig. S27. Monthly-averaged values of major groups - Schindler data.

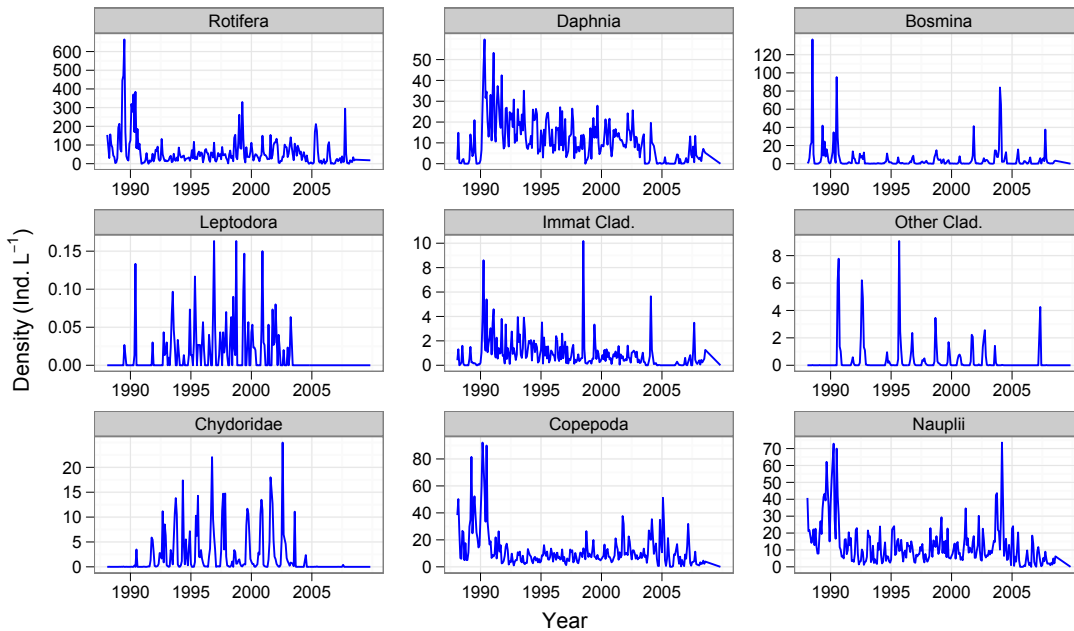


Fig. S28. Monthly densities of major zooplankton taxonomic groups sampled from tow nets averaged over 3 sampling stations (R3S9, R4S9, R5S13) between Feb 1988 and Dec 2002 - Tow net data.



Clear Lake Report 2010 - Appendix

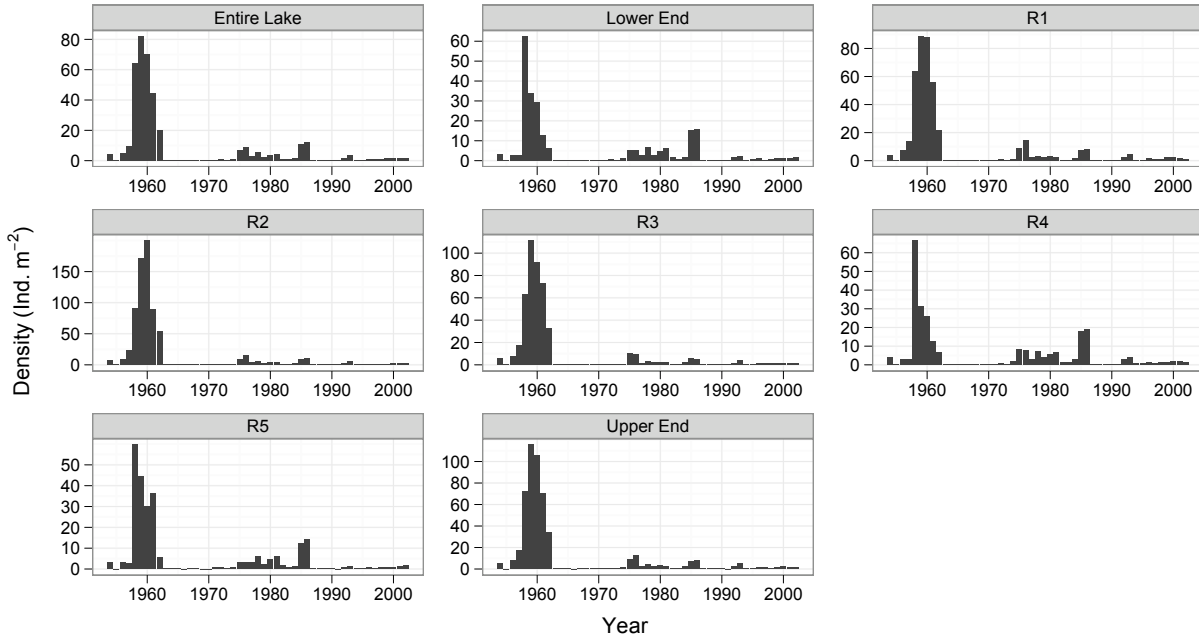


Fig. S 30. Annual average Chaoborids individuals for the entire lake and per stations.

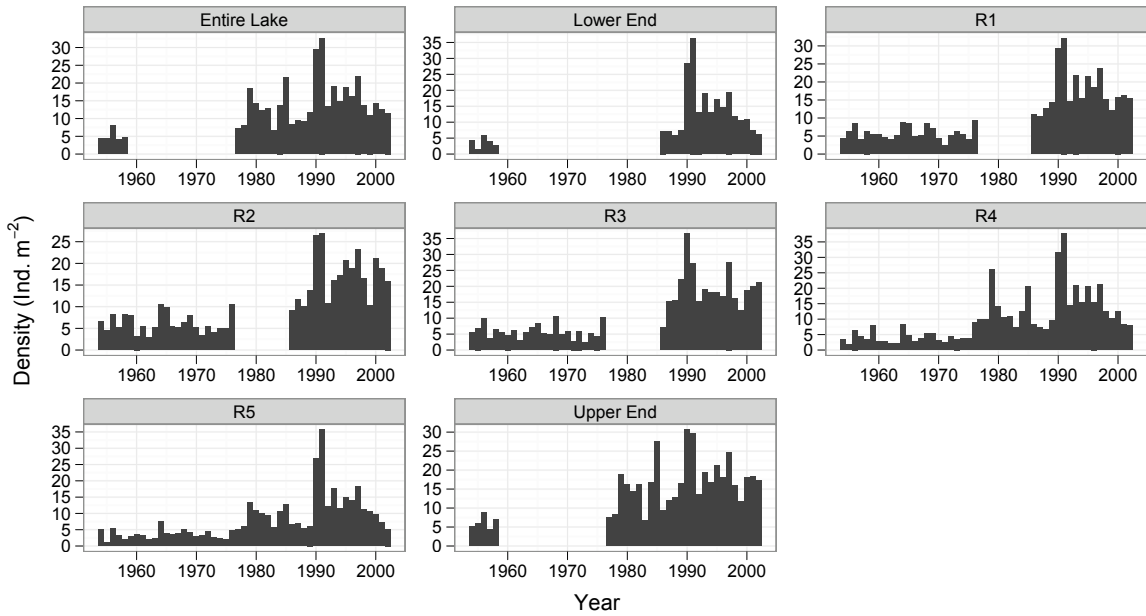


Fig. S 31. Annual Chironomid density per station.