

IDENTIFYING INSECTS

**Publication
Number
31-110C**
(2004, updated 2011)

Author: Cindy Fake, Horticulture and Small Farms Advisor, Placer & Nevada Counties

True Bugs: Order Hemiptera

Natural Enemies



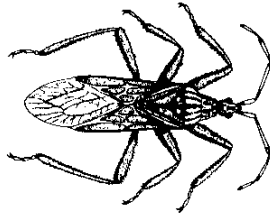
Minute Pirate Bug

ACTUAL SIZE: 1/16 to 1/8"
Feeds on aphids, mites, thrips, psyllids, & insect eggs.



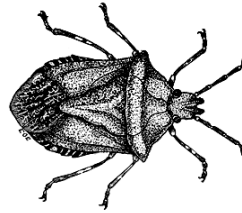
Big-eyed Bug

ACTUAL SIZE: 3/16"
Feeds on flea beetles, aphids, other small insects & eggs, mites.



Damsel Bug

ACTUAL SIZE: 3/8 to 1/2"
Feeds on aphids, mites, leafhoppers, small bugs, and caterpillars.



Rough Stink Bug

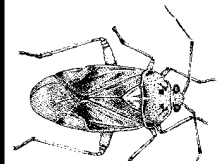
ACTUAL SIZE: 5/8"
Feeds on wide variety of insects.



Assassin Bug

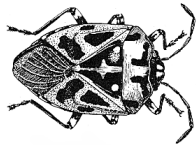
ACTUAL SIZE: 3/4 to 1"
Feeds on most insect species.

Pests



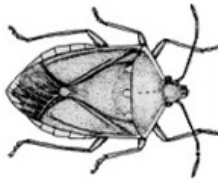
Lygus Bug

ACTUAL SIZE: 1/4-3/8"
Pest of tree fruit, strawberries,



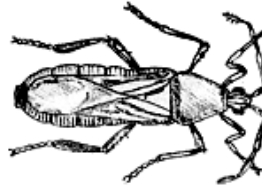
Harlequin Bug

ACTUAL SIZE: 1/4-3/8"
Pest of vegetables, esp. Brassica family



Stink Bug

ACTUAL SIZE: 1/2"
Pest of vegetables, stone & pome fruit.



Squash Bug

ACTUAL SIZE: 3/4"
Pest of all cucurbits

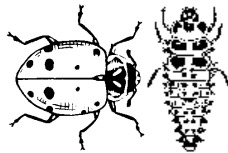
Beetles: Order Coleoptera

Natural Enemies



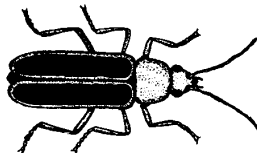
Mealy Bug Destroyer

ACTUAL SIZE: 1/16"
Feeds on aphids and mealybugs.



Lady Beetle

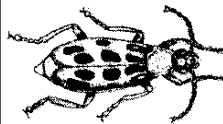
ACTUAL SIZE: 1/4 to 3/8"
Feeds on aphids, mites, thrips, and mealy bugs.



Soldier Beetle

ACTUAL SIZE: 1/2 to 3/4"
Feeds on aphids, eggs and larvae of beetles, moths, and butterflies.

Pests



Cucumber Beetle

ACTUAL SIZE: 1/8-3/16"
Pest of cucurbits & other vegetables, stone fruit



Flea Beetle

ACTUAL SIZE: 1/16-1/8"
Leaf pest on ornamentals and vegetables, especially eggplant.



COOPERATIVE EXTENSION, UNIVERSITY OF CALIFORNIA

Placer County

WEB SITE: ceplacervevada.ucdavis.edu

Nevada County



11477 E Avenue (Bldg 306, DeWitt Center)
Auburn, California 95603
(530) 889-7385
FAX (530) 889-7397
E-Mail: ceplacer@ucdavis.edu

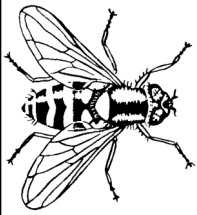
The University of California, in accordance with applicable Federal and State law and University policy, does not discriminate on the basis of race, color, national origin, religion, sex, disability, age, medical condition (cancer-related), ancestry, marital status, citizenship, sexual orientation, or status as a Vietnam-era veteran or special disabled veteran. Inquiries regarding the University's nondiscrimination policies may be directed to the Affirmative Action Director, University of California, Agriculture and Natural Resources, 1111 Franklin, 6th Floor, Oakland, California 94607-5200. (510) 987-0096.

United States Department of Agriculture, University of California, Placer and Nevada Counties cooperating.

255 So Auburn (Veterans Memorial Bldg)
Grass Valley, California 95945
(530) 273-4563
FAX (530) 273-4769
E-Mail: cenevada@ucdavis.edu

Flies: Order Diptera (2 wings)

Natural Enemies



Syrphid Fly

ACTUAL SIZE: 1/8 to 1"
Feeds on aphids.



Tachinid Fly

ACTUAL SIZE: 3/8 to 1/2"
Feeds on caterpillars, beetles & insect larvae.

Pests



Olive Fruit Fly

ACTUAL SIZE: 1/8-3/16"
Pest of olive fruit, difficult to detect on fruit until ripening.



Carrot Fly

ACTUAL SIZE: 1/8 to 3/16"
Pest of carrots, parsley, celery, turnips.



Apple Maggot Fly

ACTUAL SIZE: 1/4"
Pest of apple fruit.



Spotted Wing Drosophila

ACTUAL SIZE: 1/16"
Pest of cherries, berries, figs, stonefruit. Attacks healthy ripening fruit as well as overripe and rotting fruit. Must be treated before it lays eggs.

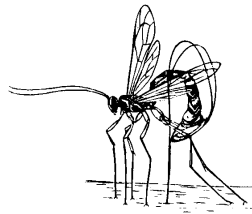
Wasps: Order Hymenoptera

Natural Enemies



Braconid Wasps

ACTUAL SIZE: 1/16 to 1/8"
Inserts egg in insect body, wasp larva kills host. Attacks aphids, whiteflies, beetle larvae, and caterpillars.

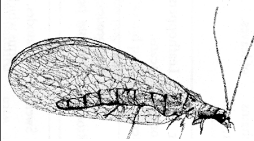


Ichneumonid Wasps

ACTUAL SIZE: 1/4 to 1"
Feed on beetles, leafhoppers, aphids, caterpillars, true bugs and whiteflies.

Lacewings & Snakeflies: Order Neuroptera

Natural Enemies



Green Lacewing

ACTUAL SIZE: 1/2 to 1"
Larvae and adults of some species feed on insect eggs, mites, thrips, aphids, mealybugs, whiteflies, and leafhoppers.



Snakefly

ACTUAL SIZE: 1/2 to 1"
Adults and larvae feed on insect eggs, mites, aphids, and other soft bodied insects.

"Insects are not going to inherit the earth. They own it now. So we might as well make peace with the landlord." -T. Eisner