

RIVERSIDE COUNTY AGRICULTURE, LIVESTOCK AND TURF REPORT, 1950

VARIETY	HA	RI	SP	TOTAL	ST	PRICE	VALUATION
Almonds	6019	35		12024	990	8888	\$1,441,400
Apples	14142	3024	27	18193	1424	1079	\$1,971,100
Alfalfa	2325			2325			\$1,962,000
Apricots	809	78		887	103	863	\$1,484,000
Avocados	107	109	302	518	147	348	\$1,400,000
Bananas	201	108		309	108	282	\$1,400,000
Beans	114	102	136	352	103	345	\$1,484,000
Berries	18	4		22	1	21	\$1,180,000
Buckwheat	113	108	107	328	103	225	\$1,900,000
Citrus	17			17			\$1,900,000
Dates	105	110		215	103	112	\$1,900,000
Fig	105	110		215	103	112	\$1,900,000
Flowers	105	110		215	103	112	\$1,900,000
Grapes	105	110		215	103	112	\$1,900,000
Hay	105	110		215	103	112	\$1,900,000
Oranges	105	110		215	103	112	\$1,900,000
Peaches	105	110		215	103	112	\$1,900,000
Pears	105	110		215	103	112	\$1,900,000
Pistachios	105	110		215	103	112	\$1,900,000
Prunes	105	110		215	103	112	\$1,900,000
Raspberries	105	110		215	103	112	\$1,900,000
Strawberries	105	110		215	103	112	\$1,900,000
Tangerines	105	110		215	103	112	\$1,900,000
Walnuts	105	110		215	103	112	\$1,900,000
Watermelons	105	110		215	103	112	\$1,900,000
Wheat	105	110		215	103	112	\$1,900,000
Yucca	105	110		215	103	112	\$1,900,000
Other	105	110		215	103	112	\$1,900,000
TOTAL	105	110		215	103	112	\$1,900,000



**AGRICULTURAL CROP REPORT 1948**

Riverside County Agricultural Crop Report 1954

Compiled by RIVERSIDE COUNTY AGRICULTURAL DEPARTMENT  
Riverside County California

Riverside County Agricultural Crop Report 1955

Compiled by RIVERSIDE COUNTY AGRICULTURAL DEPARTMENT  
Riverside County, California

**RIVERSIDE COUNTY AGRICULTURAL PRODUCTION REPORT 2011**

RIVERSIDE COUNTY AGRICULTURAL CROP REPORT 1974

Compiled by RIVERSIDE COUNTY AGRICULTURAL COMMISSIONER  
Riverside County, California

RIVERSIDE COUNTY Agricultural Crop Report 1983

Compiled by RIVERSIDE COUNTY AGRICULTURAL COMMISSIONER  
Riverside County, California

Riverside County AGRICULTURAL CROP AND LIVESTOCK REPORT 1988

Riverside County AGRICULTURAL CROP AND LIVESTOCK REPORT 1990

1993 AGRICULTURAL PRODUCTION REPORT

JAMES O. WALLACE  
AGRICULTURAL COMMISSIONER

COUNTY OF RIVERSIDE AGRICULTURAL COMMISSIONER PROTECTION AND SERVICE 1999 AGRICULTURAL CROP REPORT

COUNTY OF RIVERSIDE 2002 AGRICULTURAL PRODUCTION REPORT

RIVERSIDE COUNTY 2006 AGRICULTURAL PRODUCTION REPORT

ROBERT M. HOWIE  
SPECIAL TRIBUTE EDITION

Riverside County Agricultural Production 2009



**JOHN SNYDER**

Agricultural Commissioner  
Sealer of Weights & Measures

**AGRICULTURAL COMMISSIONER'S OFFICE**

4080 LEMON STREET, ROOM 19  
P.O. BOX 1089  
RIVERSIDE, CA 92502-1089  
PHONE (951) 955-3000  
FAX (951) 955-3012  
www.rivcoag.org

**WEIGHTS & MEASURES DIVISION**

2950 WASHINGTON STREET  
P.O. BOX 1480  
RIVERSIDE, CA 92502-1480  
PHONE (951) 955-3030  
FAX (951) 276-4728

Karen Ross, Secretary

California Department of Food and Agriculture

The Honorable Board of Supervisors of Riverside County

John Tavaglione, Chairman, District 2

Bob Buster, District 1

John Benoit, District 4

Jeff Stone, District 3

Marion Ashley, District 5

I am pleased to submit the 2011 Agricultural Production Report for the acreage, yield and gross valuation of agricultural crops and livestock for Riverside County.

This year's report represents a total gross valuation of \$1,282,256,116, an increase of \$188.6 million (17.2%) over the 2010 value and a new record for Riverside County. Agricultural Crops rose 15.4% to \$990,225,736 while Livestock and Poultry production increased nearly 24% to \$292,030,380.

Crop values vary from year to year based on production, market fluctuations and weather. 2011 presented favorable conditions for many of Riverside County's top commodities. After three years of declines, Nursery Stock, the highest valued crop in the county increased 18.2% to just over \$200 million. Milk values increased 32% to \$191.8 million and remained in second place followed by Table Grapes, valued at \$118.5 million, up more than 28%. Field and Seed Crops saw the greatest increases in value, a remarkable 83.5%. Leading the way was Hay at over \$101 million and now the fourth highest value commodity in the county. Rounding out the top five is Bell Peppers with a slight decrease (5%) to \$85.2 million.

As part of this year's Agricultural Production Report, our office commissioned a study designed to determine not just the value of agricultural commodities, but the significance and overall value of the agricultural industry to the economy of Riverside County. The result is the "Crop Report Context" (please see page 15). This analysis puts the numbers from the Agricultural Production Report into a larger context, providing the fullest picture yet of agriculture's economic role. The study concludes that agriculture contributed \$4.33 billion and nearly 30,000 jobs to the Riverside County economy in 2011.

It must be emphasized that this report reflects a gross return only and in no way represents a measure of profit or loss to producers. Growers do not have control over most input costs, such as fuel, fertilizers and packaging, nor can they significantly affect market prices. The fact that the agricultural sector is holding steady in a less than robust economy reflects positively on the diversity and importance of agriculture in our county.

I wish to express my sincere appreciation to the producers, processors, and agencies that have generously provided the information necessary for the compilation of this report. I would also like to thank all of the members of my staff for their contributions toward the preparation of this report.

Respectfully submitted,

John Snyder  
Agricultural Commissioner  
Sealer of Weights and Measures

# TABLE OF CONTENTS - 2011

CITRUS CROPS	1
TREE AND VINE CROPS	2
VEGETABLE, MELON AND MISCELLANEOUS CROPS	3 - 4
FIELD AND SEED CROPS	5 - 6
LIVESTOCK AND POULTRY	7
LIVESTOCK AND POULTRY PRODUCTS	7
AQUACULTURE	7
NURSERY STOCK PRODUCTION	8
DISTRICT VALUATIONS	9
APICULTURE	8
PRODUCTION VALUATION CHANGES 2010 - 2011	10
RIVERSIDE COUNTY LEADING AGRICULTURAL VALUATIONS	11
CALIFORNIA'S LEADING AGRICULTURAL COUNTIES 2009 - 2010	11
RIVERSIDE COUNTY AGRICULTURAL PRODUCTION VALUES 2002 - 2011	12
MILLION DOLLAR COMMODITIES	13
PHYTOSANITARY EXPORT CERTIFICATION SUMMARY	14
CROP REPORT CONTEXT	15
SUSTAINABLE AGRICULTURE REPORTS	16
RIVERSIDE COUNTY PEST INTERCEPTIONS	17 - 18
STAFF MEMBERS	19



# CITRUS CROPS

	Year	Planted Acreage	Harvested Acreage	Production		Value		
				Per Acre	Total	Unit	Per Unit	Total
<b>Grapefruit-Red</b>	<b>2011</b>	<b>2,938</b>	<b>2,855</b>	<b>798</b>	<b>2,278,290</b>	<b>34 lbs</b>	<b>7.17</b>	<b>16,335,339</b>
<b>By-Products</b>	<b>2011</b>			<b>153</b>	<b>436,815</b>		<b>0.99</b>	<b>432,447</b>
Grapefruit-Red	2010	2,858	2,777	1,056	2,932,512	34 lbs	7.75	22,726,968
By-Products	2010			109	302,693		1.40	423,770
<b>Grapefruit-Ruby</b>	<b>2011</b>	<b>1,893</b>	<b>1,893</b>	<b>936</b>	<b>1,771,848</b>	<b>34 lbs</b>	<b>6.64</b>	<b>11,765,071</b>
<b>By-Products</b>	<b>2011</b>			<b>153</b>	<b>289,629</b>		<b>0.98</b>	<b>283,836</b>
Grapefruit-Ruby	2010	1,895	1,895	722	1,368,190	34 lbs	8.22	11,246,522
By-Products	2010			254	481,330		0.75	360,998
<b>Grapefruit-Other*</b>	<b>2011</b>	<b>229</b>	<b>229</b>	<b>855</b>	<b>195,795</b>	<b>34 lbs</b>	<b>9.57</b>	<b>1,873,758</b>
<b>By-Products</b>	<b>2011</b>			<b>133</b>	<b>30,457</b>		<b>1.18</b>	<b>35,939</b>
Grapefruit-Other*	2010	229	229	822	188,238	34 lbs	7.82	1,472,021
By-Products	2010			187	42,823		1.08	46,249
<b>Lemons</b>	<b>2011</b>	<b>5,735</b>	<b>5,637</b>	<b>740</b>	<b>4,171,380</b>	<b>38 lbs</b>	<b>15.59</b>	<b>65,031,814</b>
<b>By-Products</b>	<b>2011</b>			<b>120</b>	<b>676,440</b>		<b>1.60</b>	<b>1,082,304</b>
Lemons	2010	5,935	5,846	748	4,372,808	38 lbs	15.77	68,959,182
By-Products	2010			117	683,982		1.75	1,196,969
<b>Miscellaneous**</b>	<b>2011</b>	<b>188</b>	<b>59</b>	<b>5.36</b>	<b>316</b>	<b>tons</b>	<b>976.00</b>	<b>308,650</b>
Miscellaneous**	2010	293	152	3.40	517	tons	1,051.00	543,157
<b>Oranges-Navel</b>	<b>2011</b>	<b>1,233</b>	<b>1,233</b>	<b>526</b>	<b>648,558</b>	<b>37.5 lbs</b>	<b>6.22</b>	<b>4,034,031</b>
<b>By-Products</b>	<b>2011</b>			<b>213</b>	<b>262,629</b>		<b>0.94</b>	<b>246,871</b>
Oranges-Navel	2010	1,233	1,233	553	681,849	37.5 lbs	10.90	7,432,154
By-Products	2010			248	305,784		0.75	229,338
<b>Oranges-Valencia</b>	<b>2011</b>	<b>2,121</b>	<b>2,121</b>	<b>433</b>	<b>918,393</b>	<b>37.5 lbs</b>	<b>3.78</b>	<b>3,471,526</b>
<b>By-Products</b>	<b>2011</b>			<b>106</b>	<b>224,826</b>		<b>2.38</b>	<b>535,086</b>
Oranges-Valencia	2010	2,201	2,201	283	622,883	37.5 lbs	10.24	6,378,322
By-Products	2010			172	378,572		3.27	1,237,930
<b>Royal Mandarins</b>	<b>2011</b>	<b>120</b>	<b>120</b>	<b>400</b>	<b>48,000</b>	<b>37.5 lbs</b>	<b>18.00</b>	<b>864,000</b>
<b>By-Products</b>	<b>2011</b>			<b>100</b>	<b>12,000</b>		<b>2.00</b>	<b>24,000</b>
Royal Mandarins	2010	110	90	410	36,900	37.5 lbs	18.00	664,200
By-Products	2010			100	9,000		2.00	18,000
<b>Tangelos</b>	<b>2011</b>	<b>490</b>	<b>379</b>	<b>386</b>	<b>146,294</b>	<b>30 lbs</b>	<b>10.23</b>	<b>1,496,588</b>
<b>By-Products</b>	<b>2011</b>			<b>165</b>	<b>62,535</b>		<b>1.80</b>	<b>112,563</b>
Tangelos	2010	490	470	503	236,410	30 lbs	11.06	2,614,695
By-Products	2010			147	69,090		1.14	78,763
<b>Tangerines</b>	<b>2011</b>	<b>1,861</b>	<b>1,748</b>	<b>424</b>	<b>741,152</b>	<b>25 lbs</b>	<b>15.79</b>	<b>11,702,790</b>
<b>By-Products</b>	<b>2011</b>			<b>140</b>	<b>244,720</b>		<b>1.25</b>	<b>305,900</b>
Tangerines	2010	1,861	1,810	430	778,300	25 lbs	18.73	14,577,559
By-Products	2010			130	235,300		1.25	294,125
<b>TOTAL</b>	<b>2011</b>	<b>16,808</b>	<b>16,274</b>					<b>119,942,513</b>
	2010	17,105	16,703					140,500,922

\* Includes: White, Star.

\*\* Includes: Kumquats, Limes, Oranges-Blood, Tangerine/Mandarin-Gold Nugget, Minneola, Murcott.

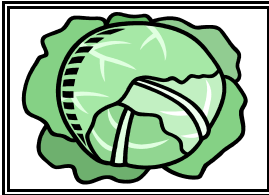


# TREE AND VINE CROPS

	Year	Planted Acreage	Harvested Acreage	Production			Value	
				Per Acre	Unit	Per Unit		
<b>Apples</b>	<b>2011</b>	<b>22</b>	<b>22</b>	<b>350</b>	<b>7,700</b>	<b>40 lbs</b>	<b>15.00</b>	<b>115,500</b>
	2010	19	19	50	950	40 lbs	10.00	9,500
<b>Apricots</b>	<b>2011</b>	<b>13</b>	<b>13</b>	<b>200</b>	<b>2,600</b>	<b>25 lbs</b>	<b>20.00</b>	<b>52,000</b>
	2010	13	13	250	3,250	25 lbs	20.00	65,000
<b>Avocados</b>	<b>2011</b>	<b>6,344</b>	<b>6,170</b>	<b>286</b>	<b>1,764,620</b>	<b>26 lbs</b>	<b>34.00</b>	<b>59,997,080</b>
	2010	6,344	6,170	217	1,338,890	26 lbs	17.59	23,551,075
<b>Cherries</b>	<b>2011</b>	<b>28</b>	<b>28</b>		<b>Frost Damage</b>			
	2010	28	28	250	7,000	18 lbs	20.00	140,000
<b>Dates</b>	<b>2011</b>	<b>9,328</b>	<b>7,018</b>	<b>3.77</b>	<b>26,458</b>	<b>tons</b>	<b>1,554.00</b>	<b>41,115,514</b>
<b>Culls</b>	<b>2011</b>			<b>0.27</b>	<b>1,895</b>	<b>tons</b>	<b>90.00</b>	<b>170,537</b>
Dates	2010	9,328	6,473	3.28	21,231	tons	1,707.00	36,242,068
Culls	2010			0.46	2,978	tons	99.00	294,822
<b>Grapes - Table* (Total)</b>	<b>2011</b>	<b>8,619</b>	<b>7,725</b>		<b>Listed by Variety below.</b>			<b>118,524,718</b>
	2010	8,635	7,679					92,186,719
<b>Beauty Seedless</b>	<b>2011</b>	<b>91</b>	<b>91</b>	<b>757</b>	<b>68,887</b>	<b>18 lbs</b>	<b>17.17</b>	<b>1,182,790</b>
	2010	134	134	781	104,654	18 lbs	16.49	1,725,744
<b>Exotic</b>	<b>2011</b>	<b>26</b>	<b>26</b>	<b>520</b>	<b>13,520</b>	<b>18 lbs</b>	<b>14.00</b>	<b>189,280</b>
	2010	26	26	517	13,442	18 lbs	14.00	188,188
<b>Flame Seedless</b>	<b>2011</b>	<b>4,268</b>	<b>3,582</b>	<b>797</b>	<b>2,854,854</b>	<b>18 lbs</b>	<b>19.61</b>	<b>55,983,687</b>
	2010	4,268	4,088	809	3,307,192	18 lbs	14.22	47,028,270
<b>Perlette</b>	<b>2011</b>	<b>219</b>	<b>111</b>	<b>400</b>	<b>44,400</b>	<b>18 lbs</b>	<b>20.00</b>	<b>888,000</b>
	2010	219	219	735	160,965	18 lbs	18.26	2,939,221
<b>Thompson Seedless</b>	<b>2011</b>	<b>349</b>	<b>249</b>	<b>794</b>	<b>197,706</b>	<b>18 lbs</b>	<b>22.00</b>	<b>4,349,532</b>
	2010	349	349	789	275,361	18 lbs	14.14	3,893,605
<b>Other Varieties</b>	<b>2011</b>	<b>3,666</b>	<b>3,666</b>	<b>720</b>	<b>2,639,520</b>	<b>18 lbs</b>	<b>21.19</b>	<b>55,931,429</b>
	2010	3,639	2,863	849	2,430,687	18 lbs	14.98	36,411,691
<b>Grapes - Wine</b>	<b>2011</b>	<b>2,772</b>	<b>2,772</b>	<b>2.30</b>	<b>6,376</b>	<b>tons</b>	<b>1,051.00</b>	<b>6,700,756</b>
	2010	2,103	2,103	3.19	6,709	tons	1,094.00	7,339,176
<b>Miscellaneous**</b>	<b>2011</b>	<b>1,160</b>	<b>387</b>	<b>4.93</b>	<b>1,908</b>	<b>tons</b>	<b>2,549.00</b>	<b>4,863,263</b>
	2010	1,160	377	11.50	4,336	tons	897.00	3,888,944
<b>Peaches</b>	<b>2011</b>	<b>105</b>	<b>99</b>	<b>505</b>	<b>49,995</b>	<b>22 lbs</b>	<b>21.12</b>	<b>1,055,894</b>
	2010	105	105	544	57,120	22 lbs	21.30	1,216,656
<b>Pears</b>	<b>2011</b>			<b>Miscellaneous</b>				
	2010			<b>Miscellaneous</b>				
<b>Persimmons</b>	<b>2011</b>	<b>10</b>	<b>10</b>	<b>450</b>	<b>4,500</b>	<b>24 lbs</b>	<b>12.00</b>	<b>54,000</b>
	2010	10	10	500	5,000	24 lbs	12.00	60,000
<b>TOTAL</b>	<b>2011</b>	<b>28,401</b>	<b>24,244</b>					<b>232,649,262</b>
	2010	27,745	22,977					164,993,960

\* Harvested Acreage supplied by the California Desert Grape Administrative Committee.

\*\* Includes: Cherimoya, Figs, Guava, Jojoba, Mangoes, Nectarines, Pears, Plums, Pomegranates, Raisins, Other.



## VEGETABLE, MELON & MISCELLANEOUS CROPS

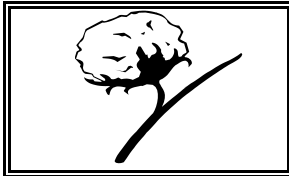
	Year	Harvested Acreage	Production		Unit	Value	
			Per Acre	Total		Per Unit	Total
<b>Artichokes</b>	2011	723	400	289,200	23 lbs	14.83	4,288,836
	2010	599	640	383,360	23 lbs	13.13	5,033,517
<b>Beans-Green</b>	2011	916	363	332,508	30 lbs	16.80	5,586,134
	2010	1,071	365	390,915	30 lbs	19.16	7,489,931
<b>Broccoli</b>	2011	2,717	535	1,453,595	23 lbs	10.47	15,219,140
	2010	2,488	533	1,326,104	23 lbs	8.62	11,431,016
<b>Cabbage</b>	2011	93	590	54,870	50 lbs	8.77	481,210
	2010	75	690	51,750	50 lbs	7.59	392,783
<b>Carrots</b>	2011	1,995	45	89,775	tons	135.00	12,119,625
	2010	1,882	42	79,044	tons	155.00	12,251,820
<b>Cauliflower</b>	2011	1,399	557	779,243	23 lbs	11.20	8,727,522
	2010	1,284	635	815,340	23 lbs	9.59	7,819,111
<b>Celery</b>	2011	478	771	368,538	60 lbs	14.40	5,306,947
	2010	391	1,094	427,754	60 lbs	13.10	5,603,577
<b>Corn-Sweet</b>	2011	2,861	396	1,132,956	45 lbs	10.95	12,405,868
	2010	3,238	351	1,136,538	45 lbs	9.90	11,251,726
<b>Eggplant</b>	2011	262	858	224,796	20 lbs	11.52	2,589,650
	2010	372	953	354,516	20 lbs	9.17	3,250,912
<b>Lettuce Head</b>	2011	1,348	389	524,372	50 lbs	12.42	6,512,700
	2010	1,263	392	495,096	50 lbs	7.51	3,718,171
<b>Loose Leaf</b>	2011	1,066	852	908,232	22 lbs	10.88	9,881,564
	2010	1,049	933	978,717	22 lbs	10.28	10,061,211
<b>Romaine</b>	2011	2,144	609	1,305,696	35 lbs	12.70	16,582,339
	2010	2,383	851	2,027,933	35 lbs	11.25	22,814,246
<b>Melons</b>							
<b>Cantaloupe</b>	2011	712	661	470,632	40 lbs	9.04	4,254,513
	2010	725	673	487,925	40 lbs	5.36	2,615,278
<b>Crenshaw</b>	2011	53	584	30,952	29 lbs	6.49	200,878
	2010	57	572	32,604	29 lbs	7.68	250,399
<b>Honeydew</b>	2011	889	928	824,992	29 lbs	6.10	5,032,451
	2010	1,048	652	683,296	29 lbs	5.14	3,512,141
<b>Mixed</b>	2011	558	773	431,334	33 lbs	7.95	3,429,105
	2010	526	616	324,016	33 lbs	7.19	2,329,675



## VEGETABLE, MELON & MISCELLANEOUS CROPS

	Year	Harvested Acreage	Production		Unit	Value	
			Per Acre	Total		Per Unit	Total
<b>Melons</b>							
Watermelon	2011	642	38	24,396	tons	216.00	5,269,536
	2010	1,588	29	46,052	tons	270.00	12,434,040
<b>Miscellaneous*</b>							
	2011	4,448	7.8	34,872	tons	550.00	19,179,776
	2010	4,379	6.3	27,588	tons	682.00	18,814,811
<b>Onions-Dry</b>							
	2011	38	800	30,400	50 lbs	6.25	190,000
	2010	211	806	170,066	50 lbs	6.50	1,105,429
<b>Oriental Vegetables</b>							
	2011	2,741	8.0	21,928	tons	773.00	16,950,344
	2010	2,788	8.7	24,256	tons	899.00	21,805,784
<b>Peppers</b>							
Bell	2011	5,636	1,209	6,813,924	30 lbs	12.51	85,242,189
	2010	5,037	1,389	6,996,393	30 lbs	12.85	89,903,650
<b>Potatoes</b>							
Fall	2011	735	174	127,890	100 lbs	18.47	2,362,128
	2010	996	149	148,404	100 lbs	18.32	2,718,761
Spring	2011	2,889	221	638,469	100 lbs	17.39	11,102,976
	2010	2,347	258	605,526	100 lbs	17.07	10,336,329
<b>Radishes</b>							
	2011	120	1,050	126,000	35 lbs	5.10	642,600
	2010	335	978	327,630	35 lbs	4.59	1,503,822
<b>Spices/Herbs</b>							
	2011	987	950	937,650	various	5.29	4,960,169
	2010	1,576	1,464	2,307,264	various	3.88	8,952,184
<b>Spinach</b>							
	2011	188	1,056	198,528	30 lbs	10.06	1,997,192
	2010	189	976	184,464	30 lbs	10.88	2,006,968
<b>Squash, All</b>							
	2011	472	6.7	3,162	tons	539.00	1,704,534
	2010	221	4.7	1,039	tons	879.00	913,017
<b>Strawberries</b>							
	2011	372	3,728	1,386,816	various	10.06	13,951,369
	2010	327	3,119	1,019,913	various	10.02	10,219,528
<b>Tomatoes</b>							
	2011	210	1,800	378,000	20 lbs	6.50	2,457,000
	2010	125	1,800	225,000	20 lbs	6.50	1,462,500
<b>TOTAL</b>							
	2011	37,692					278,628,295
	2010	38,570					292,002,337

\* Includes: Anise, Arugula, Asparagus, Blueberries, Broccoli-Chinese, Cabbage-Chinese, Cabbage-Napa, Carrots-Processing, Celery-Chinese, Chard, Chives, Cilantro, Cucumbers, Daikon, Dandelion, Dill, Endive, Escarole, Fennel, Garlic, Greens-Collard, Greens-Mixed, Kale, Kohlrabi, Leeks, Mustard, Okra, Parsley, Pumpkins, Rutabaga, Spinach-Chinese, Tomatoes-Cherry, Turnips, Watermelons-Mini, Other.



# FIELD AND SEED CROPS

	Year	Harvested Acreage	Production		Unit	Value	
			Per Acre	Total		Per Unit	Total
<b>Cotton</b>							
Short Staple	2011	14,112	4.00	56,448	500 lbs	485.00	27,377,280
	2010	9,129	4.00	36,516	500 lbs	450.00	16,432,200
Seed	2011		3.00	42,336	tons	250.00	10,584,000
	2010		2.90	26,474	tons	190.00	5,030,100
<b>Grain</b>							
Barley	2011	300	5.50	1,650	tons	173.00	285,450
	2010	214	4.00	856	tons	160	137,000
Oats	2011	415	1.00	415	tons	400.00	166,000
	2010	525	0.30	158	tons	360.00	56,700
Wheat	2011	18,922	0.95	17,976	tons	279.00	5,015,276
	2010	19,149	0.98	18,766	tons	182.00	3,415,400
<b>Hay</b>							
Alfalfa	2011	45,042	9.20	414,386	tons	225.00	93,236,940
	2010	44,740	9.70	433,978	tons	109.00	47,303,600
Bermuda Grass	2011	1,927	7.50	14,453	tons	200.00	2,890,500
	2010	1,837	7.80	14,329	tons	117.00	1,676,400
Four Way	2011	163	3.90	636	tons	206.00	130,954
	2010	273	2.60	710	tons	128.00	90,900
Klein Grass	2011	1,939	8.90	17,257	tons	190.00	3,278,849
	2010	Miscellaneous					
Oats	2011	2,027	2.50	5,068	tons	200.00	1,013,500
	2010	2,146	1.70	3,648	tons	160.00	583,700
Sudan	2011	871	4.60	4,007	tons	151.00	604,997
	2010	1,640	4.60	7,544	tons	138.00	1,041,100
Miscellaneous*	2011	597	1.36	812	tons	213.00	172,939
	2010	515	2.90	1,494		112.00	167,300
Pasture-Irrigated	2011	1,911		1,911	acres	115.00	219,765
	2010	2,708		2,708	acres	118.00	319,544
Rangeland	2011	25,000		25,000	acres	1.90	47,500
	2010	25,000		25,000	acres	2.00	50,000

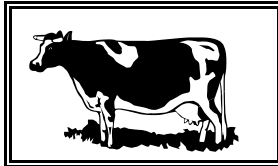




## FIELD AND SEED CROPS

	Year	Harvested Acreage	Production		Unit	Value	
			Per Acre	Total		Per Unit	Total
<b>Silage and Green Chop</b>							
Alfalfa	2011	710	41.00	29,110	tons	40.00	1,164,400
	2010	880	45.00	39,600	tons	34.00	1,346,400
Corn	2011	305	28.00	8,540	tons	50.00	427,000
	2010	685	27.00	18,495	tons	44.00	813,780
Oats	2011	866	7.00	6,062	tons	36.00	218,232
	2010	858	5.00	4,290	tons	35.00	150,150
Sorghum	2011	826	16.00	13,216	tons	45.00	594,720
	2010	820	10.00	8,200	tons	39.50	323,900
Sudan	2011	300	18.00	5,400	tons	26.00	140,400
	2010	200	18.00	3,600	tons	24.00	86,400
Triticale	2011	1,220	22.00	26,840	tons	40.00	1,073,600
	2010	1,882	15.00	28,230	tons	45.00	1,270,350
Wheat	2011	2,250	6.50	14,625	tons	38.00	555,750
	2010	4,542	6.50	29,523	tons	35.00	1,033,305
<b>TOTAL</b>	<b>2011</b>	<b>119,703</b>					<b>149,198,052</b>
	2010	117,743					81,328,229

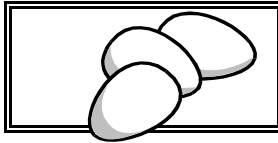
\* Includes: Hay - Teff Grass, Safflower.



## LIVESTOCK AND POULTRY

	Year	Number of Head	Total Liveweight	Unit	Value	
					Per Unit	Total
Cattle and Calves	2011	27,116	144,393	cwt	100.81	14,556,258
	2010	35,665	188,832	cwt	80.69	15,236,854
Sheep and Lambs	2011	8,214	10,664	cwt	147.00	1,567,608
	2010	9,924	12,193	cwt	120.00	1,463,160
Other Livestock*	2011			various		1,258,400
	2010			various		1,300,000
<b>TOTAL</b>	2011					<b>\$17,382,266</b>
	2010					<b>\$18,000,014</b>

\* Includes Baby Chicks, Chickens, Ducks, Pheasants.

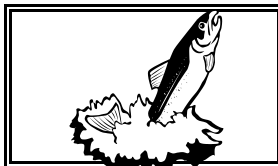


## LIVESTOCK AND POULTRY PRODUCTS

	Year	Production	Unit	Value	
				Unit	Total
Eggs	2011	100,871,496	dozen	0.81	81,705,912
	2010	101,890,400	dozen	0.70	71,323,280
Milk*	2011	10,175,787	cwt	18.85	191,813,585
	2010	9,682,030	cwt	15.04	145,617,731
Other Products**	2011				1,128,617
	2010				985,200
<b>TOTAL</b>	2011				<b>\$274,648,114</b>
	2010				<b>\$217,926,211</b>

\*Information Supplied by: California Agricultural Statistics Service. Includes Fresh Market and Manufactured.

\*\*Includes Wool, Manure.



## AQUACULTURE

	Year	Production	Unit	Value	
				Per Unit	Total
Catfish	2011	250,000	lbs	2.30	575,000
	2010	240,000	lbs	2.20	528,000
Miscellaneous*	2011		various		492,250
	2010		various		447,500
Tilapia	2011	1,450,000	lbs	2.58	3,741,000
	2010	1,547,520	lbs	2.55	3,946,176
<b>Total</b>	2011				<b>\$4,808,250</b>
	2010				<b>\$4,921,676</b>

\* Includes Goldfish, Koi, Tropical Fish, Bass.



## NURSERY STOCK PRODUCTION

	<b>Year</b>	<b>Acres</b>	<b>Production</b>	<b>Unit</b>	<b>Valuation</b>
<b>Ornamental Nursery Stock</b>	<b>2011</b>	<b>4,800</b>	<b>67,020,872</b>	<b>various</b>	<b>175,352,064</b>
	2010	5,122	40,468,595	various	131,470,900
<b>Cut Flowers*</b>	<b>2011</b>	<b>206</b>	<b>2,722,400</b>	<b>cuttings</b>	<b>2,092,400</b>
	2010	223	4,297,103	cuttings	3,134,400
<b>Christmas Trees (cut)</b>	<b>2011</b>	<b>65</b>	<b>1,500</b>	<b>each</b>	<b>97,500</b>
	2010	15	1,500	each	62,500
<b>Turf</b>	<b>2011</b>	<b>1,951</b>	<b>83,158,000</b>	<b>square feet</b>	<b>18,412,000</b>
	2010	3,281	120,804,974	square feet	29,391,600
<b>Farm Planting Stock</b>	<b>2011</b>	<b>84</b>	<b>164,800</b>	<b>various</b>	<b>4,201,000</b>
	2010	109	324,340	various	5,281,900
<b>TOTAL</b>	<b>2011</b>	<b>7,106</b>			<b>200,154,964</b>
	2010	8,750			169,341,300

\* Includes: Cut Greens



## APICULTURE

	<b>Year</b>	<b>Production</b>	<b>Unit</b>	<b>Value</b>	
				<b>Per</b>	<b>Total</b>
<b>Honey</b>	<b>2011</b>	<b>1,100,000</b>	<b>lbs</b>	<b>1.44</b>	<b>1,584,000</b>
	2010	1,292,000	lbs	1.35	1,744,200
<b>Beeswax</b>	<b>2011</b>	<b>22,160</b>	<b>lbs</b>	<b>2.17</b>	<b>48,100</b>
	2010	22,160	lbs	2.03	45,000
<b>Fees Collected for Pollination</b>	<b>2011</b>	<b>23,110</b>	<b>colonies</b>	<b>139.00</b>	<b>3,212,300</b>
	2010	23,110	colonies	123.00	2,842,500
<b>Total Colonies</b>	<b>2011</b>	<b>35,700</b>			
	2010	38,000			
<b>TOTAL</b>	<b>2011</b>				<b>4,844,400</b>
	2010				4,631,700

## DISTRICT VALUATIONS - AGRICULTURAL CROPS

District	2007	2008	2009	2010	2011
Riverside/Corona	118,897,000	100,431,600	82,565,100	79,207,200	121,652,448
San Jacinto/Temecula Valley	194,148,400	165,022,400	130,157,200	137,756,700	156,362,416
Coachella Valley	486,898,900	503,782,700	484,825,900	533,846,400	526,337,500
Palo Verde Valley	112,961,900	165,870,000	92,796,900	98,597,300	171,179,300
<b>Total Crop Valuation</b>	<b>912,906,200</b>	<b>935,106,700</b>	<b>790,345,100</b>	<b>849,407,600</b>	<b>975,531,664</b>

## ACREAGE STATISTICS

Crop	2007	2008	2009	2010	2011
Citrus	19,401	17,691	17,355	17,105	16,808
Tree and Vine	28,417	28,408	27,979	27,745	28,401
Vegetable, Melons, Misc.	37,278	38,142	30,902	38,570	37,692
Field and Seed	118,373	153,784	117,140	117,743	119,703
Nursery	10,581	7,987	8,690	8,750	7,106
<b>Total Planted Acreage</b>	<b>214,050</b>	<b>246,012</b>	<b>202,066</b>	<b>209,913</b>	<b>209,710</b>

## TOTAL VALUATION - F.O.B.

Crop	2007	2008	2009	2010	2011
Citrus	121,387,100	135,759,800	101,652,000	140,500,922	119,942,513
Tree and Vine	189,286,500	173,678,000	191,682,600	164,993,960	232,649,262
Vegetable, Melons, Misc.	234,854,700	266,414,900	221,286,700	292,002,337	278,628,295
Field and Seed	94,492,000	123,545,400	69,699,800	81,328,229	149,198,052
Nursery	272,326,200	230,416,200	206,499,900	169,341,300	200,154,964
<b>Total Crop</b>	<b>926,124,600</b>	<b>947,529,000</b>	<b>801,082,500</b>	<b>857,720,124</b>	<b>990,225,736</b>
Livestock and Poultry	338,938,600	321,060,900	214,672,800	235,926,225	292,030,380
<b>GRAND TOTAL</b>	<b>1,265,063,200</b>	<b>1,268,589,900</b>	<b>1,015,755,300</b>	<b>1,093,646,349</b>	<b>1,282,256,116</b>

## PRODUCTION VALUATION CHANGES 2010 TO 2011

<u>Crop</u>	<u>2011</u>	<u>2010</u>	<u>Value Change (\$)</u>	<u>Percentage Change</u>
Citrus	119,942,513	140,500,922	(20,558,409)	-14.6%
Tree and Vine	232,649,262	164,993,960	67,655,302	41.0%
Vegetables	278,628,295	292,002,337	(13,374,042)	-4.6%
Field and Seed	149,198,052	81,328,229	67,869,823	83.5%
Nursery	200,154,964	169,341,300	30,813,664	18.2%
Apiculture	4,844,400	4,631,700	212,700	4.6%
Aquaculture	4,808,250	4,921,676	(113,426)	-2.3%
<b>All Agriculture</b>	<b>990,225,736</b>	<b>857,720,124</b>	<b>132,505,612</b>	<b>15.4%</b>
<b>Livestock and Poultry</b>	<b>292,030,380</b>	<b>235,926,225</b>	<b>56,104,155</b>	<b>23.8%</b>
<b>Grand Total</b>	<b>1,282,256,116</b>	<b>1,093,646,349</b>	<b>188,609,767</b>	<b>17.2%</b>

# RIVERSIDE COUNTY LEADING AGRICULTURAL VALUATIONS

## 2010

1	Nursery Stock	\$169,341,300
2	Milk	145,617,700
3	Table Grapes	92,186,700
4	Bell Peppers	89,903,700
5	Eggs	71,323,300
6	Lemons	70,156,200
7	Hay	50,695,700
8	Dates	36,536,900
9	Grapefruit	36,276,500
10	Avocados	23,551,100
11	Romaine Lettuce	22,814,200
12	Oriental Vegetables	21,805,800
13	Cotton	21,462,300
14	Miscellaneous Vegetables	18,814,800
15	Tangerines / Mandarins	18,247,400
16	Cattle / Calves	15,236,900
17	Potatoes	13,055,100
18	Watermelons	12,434,000
19	Carrots	12,251,800
20	Broccoli	11,431,000

## 2011

1	Nursery Stock	\$200,154,964
2	Milk	191,813,585
3	Table Grapes	118,524,718
4	Hay	101,155,740
5	Bell Peppers	85,242,189
6	Eggs	81,705,912
7	Lemons	75,496,998
8	Avocados	59,997,080
9	Dates	41,286,051
10	Cotton	37,961,280
11	Grapefruit	31,213,860
12	Misc. Vegetables	19,179,776
13	Oriental Vegetables	16,950,344
14	Romaine Lettuce	16,582,339
15	Broccoli	15,219,140
16	Cattle / Calves	14,556,258
17	Tangerines / Mandarines	14,505,841
18	Strawberries	13,951,369
19	Potatoes	13,465,104
20	Sweet Corn	12,405,868

# CALIFORNIA'S LEADING AGRICULTURAL COUNTIES BY TOTAL VALUE OF PRODUCTION

## 2009

<u>Rank</u>	<u>County</u>	<u>Value (\$)</u>
1	Fresno	5,372,009,000
2	Tulare	4,046,355,000
3	Monterey	4,033,718,000
4	Kern	3,606,356,000
5	Merced	2,460,474,000
6	Stanislaus	2,310,071,000
7	San Joaquin	2,000,474,000
8	Ventura	1,621,575,000
9	San Diego	1,548,124,000
10	Imperial	1,452,970,000
11	Kings	1,304,783,000
12	Santa Barbara	1,241,400,000
13	Riverside	1,015,755,000
14	Madera	963,128,000

## 2010

<u>Rank</u>	<u>County</u>	<u>Value (\$)</u>
1	Fresno	5,944,148,000
2	Tulare	4,863,706,000
3	Kern	4,757,261,000
4	Monterey	4,006,240,000
5	Merced	2,733,495,000
6	Stanislaus	2,572,433,000
7	San Joaquin	1,960,721,000
8	Ventura	1,856,698,000
9	Kings	1,717,970,000
10	San Diego	1,648,572,000
11	Imperial	1,598,534,000
12	Madera	1,348,535,000
13	Santa Barbara	1,219,996,000
14	Riverside	1,093,651,000

# RIVERSIDE COUNTY AGRICULTURAL PRODUCTION VALUES 2002 - 2011

<u>YEAR</u>	<u>VALUE</u>	<u>STATE RANK</u>
2002	\$1,063,478,000	11
2003	\$1,067,367,300	12
2004	\$1,131,605,200	12
2005	\$1,168,671,100	12
2006	\$1,102,438,400	12
2007	\$1,265,063,200	12
2008	\$1,268,589,900	13
2009	\$1,015,755,300	13
2010	\$1,093,646,349	14
2011	\$1,282,256,116	

## EXCERPTS FROM PRIOR CROP REPORTS

- In 1927, the reported value of avocados was \$1,250. That same year, pomegranates were valued at \$1,680.
- Agricultural Commissioner A. E. Bottel summarized 1932 by stating "In some instances a considerable increase in tonnage was reported. In a few instances production showed a decrease."
- At the height of the depression, 1939, Commissioner W.H. Wright reported that "few of the commodities (sold) have paid the cost of production."
- One affect of World War II was expressed by Mr. Wright in 1942, "The loss of trained personnel to the armed forces presented tremendously serious problems for the farmer."
- In 1955, Commissioner Robert M. Howie boasted that, "The greatest diversity of crops of any county in California accounts for an increase in valuation."
- Riverside County reported over 14,000 acres of Navel oranges in 1970.
- The Parent Washington Navel orange tree (currently located at the intersection of Arlington Ave. and Magnolia Ave.) was saluted by Commissioner James O. Wallace in 1986 when he called it, "one of the most, if not the most important historical fruit tree in existence".

## 2011 MILLION DOLLAR COMMODITIES

<u>Rank</u>	<u>Commodity</u>	<u>Value</u>
1	Nursery Stock	\$200,154,964
2	Milk	191,813,585
3	Table Grapes	118,524,718
4	Hay	101,155,740
5	Bell Peppers	85,242,189
6	Eggs	81,705,912
7	Lemons	66,114,118
8	Avocados	59,997,080
9	Dates	41,286,051
10	Cotton	37,961,280
11	Grapefruit	30,726,390
12	Misc. Vegetables	19,179,776
13	Oriental Vegetables	16,950,344
14	Romaine Lettuce	16,582,339
15	Broccoli	15,219,140
16	Cattle / Calves	14,556,258
17	Mandarins	14,505,841
18	Strawberries	13,951,369
19	Potatoes	13,465,104
20	Sweet Corn	12,405,868
21	Carrots	12,119,625
22	Loose Leaf Lettuce	9,881,564
23	Cauliflower	8,727,522
24	Wine Grapes	6,700,756
25	Head Lettuce	6,512,700
26	Green Beans	5,586,134
27	Celery	5,306,947
28	Watermelon	5,269,536
29	Honeydew Melon	5,032,451
30	Wheat (grain)	5,015,276
31	Spices / Herbs	4,960,169
32	Apiculture	4,844,400
33	Misc. Tree and Vine	4,863,263
34	Artichoke	4,288,836
35	Navel Oranges	4,280,902
36	Cantaloupe	4,254,513
37	Valencia Oranges	4,023,625
38	Talapia	3,741,000
39	Mixed Melons	3,429,105
40	Eggplant	2,589,650
41	Tomatoes	2,457,000
42	Spinach	1,997,192
43	Squash	1,704,534
44	Sheep and Lambs	1,567,608
45	Other Livestock	1,258,400
46	Alfalfa (green chop / silage)	1,164,400
47	Other Livestock / Poultry Products	1,128,617
48	Triticale (green chop / silage)	1,073,600



# PHYTOSANITARY EXPORT CERTIFICATION - 2011

## COMMODITIES CERTIFIED

Alfalfa	Corn Wheat	Peaches
Apple Cuttings	Cotton	Peas
Artichokes	Date Palm Shoots	Persimmons
Assorted Nursery Plants	Dates	Pomegranates
Avocados	Dill	Potatoes
Basil	Flax	Prunes
Bell Peppers	Klein Grass	Rosemary
Bermuda Grass	Lettuce	Sage
Broccoli	Mangoes	Savory
Cauliflower	Melons	Spinach
Celery	Mint	Sudan Grass
Cherries	Oats	Sunflower
Chives	Olives	Table Grapes
Cilantro	Onions	Thyme
Citrus	Oregano	Tomatoes
Citrus Bud Stems		Watermelons

## EXPORT COUNTRIES

Argentina	El Salvador	Norway
Australia	France	Pakistan
Bahamas	French Polynesia	Panama
Bahrain	Germany	Peru
Belize	Guatemala	Philippines
Bangladesh	Honduras	Qatar
Bermuda	Hong Kong	Republic of Korea
Brazil	India	Russian Federation
Cambodia	Indonesia	Rwanda
Canada	Israel	Singapore
Chile	Jamaica	Spain
China	Japan	Sri Lanka
Christmas Island	Kuwait	Taiwan
Colombia	Lebanon	Thailand
Costa Rica	Mayaysia	Turkey
Curacao	Mexico	Uganda
Democratic People's Republic Of Korea	Morocco	United Arab Emirates
Denmark	Netherlands	United Kingdom
Dominican Republic	New Caledonia	Viet Nam
Ecuador	New Zealand	Zambia
Egypt		

# 2011 CROP REPORT CONTEXT™

## Economic Contributions of Riverside County Agriculture

### Introduction

Agriculture plays a key role in maintaining a vibrant local economy. Workers dot the farm fields, fresh produce fills the grocery shelves, and Riverside County growers ship fruits and vegetables to all 50 states and to more than 60 foreign countries. What remains unclear, however, is the overall role that agriculture plays in sustaining a healthy local economy. How much economic output do all the food growers and processors generate? How many jobs do they support? What economic “ripple effects” does agriculture create locally? In other words, just how important is agriculture as a driver of economic health?

This report sheds light on these and related questions. Using multiple data sources and advanced economic modeling techniques, this report analyzes Riverside County agriculture’s total contribution to the local economy. The findings offer the fullest picture yet of agriculture’s economic role.

### Our Approach

When it comes to economic analysis, it is important to examine *multiplier effects*. These effects take two forms: *indirect effects* and *induced effects*. The first consists of “business to business” supplier purchases, such as farm equipment, fertilizer, seed, insurance, banking service, and other agricultural inputs. The second type (*induced effects*) includes “consumption spending” by agriculture business owners and their employees. They buy housing, healthcare, leisure activities and other things for their households. Quantifying these *multiplier effects* helps capture the full value of an economic sector.

### About the Data and Analysis

The data for this analysis came from the U.S. Bureau of Economic Analysis, packaged in proprietary software and a data program called IMPLAN, which is copyrighted by MIG, Inc. ([www.implan.com](http://www.implan.com)). **Crop Report Context™** is a registered trademark of Agricultural Impact Associates, which performed the analysis for this section ([www.ag-impact.com](http://www.ag-impact.com)).

#### Economic Output

Agriculture’s *direct* economic contribution to Riverside County economy:  
**\$2.68 billion**

Agriculture’s *multiplier effects* from local expenditures by agricultural companies and their employees: **\$1.65 billion**

Agriculture’s **total economic contribution** to Riverside County economy:  
**\$4.33 billion**

Amount paid by agricultural companies in business taxes (excluding income tax): **\$65.1 million**

#### Employment

Riverside County jobs provided *directly* by agriculture:  
**14,700**

Riverside County jobs provided *indirectly* by agriculture:  
**15,002**

Total number of Riverside County jobs provided by agriculture:  
**29,702**

### Toward the Future

Agriculture is one of Riverside County’s economic pillars and represents a vital link to both the county’s cultural past and competitive future. The process of developing this report has raised several additional questions that lie beyond the scope of this report but may warrant future research. In the meantime, the findings here provide the clearest picture yet of Riverside County agriculture’s economic role.

# SUSTAINABLE AGRICULTURE - 2011

## ORGANIC FARMING

138 Organic producers registered in Riverside County

## PEST DETECTION (Commercial and Urban)

<u>Activity</u>	<u>Hours</u>
Commercial Crops	858.4
Public Contact	75.5
Special Surveys:	
Red Imported Fire Ant	17.5
Other	121
Citrus Tristeza Indexing (Coachella Valley)	<u>Numbers</u>
Commercial	
Properties tested	2
Acres Sampled	54.5
Samples tested biochemically	201
"Positive" samples	0

## PEST DETECTION (Exotic Insects)

<u>Pest</u>	<u>Trap Servicing</u>
European Corn Borer	48
Gypsy Moth	55
Khapra Beetle	32
Asian Citrus Psyllid	499
Light Brown Apple Moth	441
EGVM	3,471

## Pest Exclusion (Incoming plant shipments)

<u>Units Profiled</u>	<u>Units Inspected</u>	<u>Rejections</u>
8,220	3,225	70

## PEST ABATEMENT / HOLD NOTICES

<u>Pest</u>	<u>Properties</u>
California Red Scale	22
Sting Nematode	7
Citrus Tristeza Virus	0
Glassy-Winged Sharpshooter	0

## BIOLOGICAL CONTROL OF WEEDS

<u>Pest</u>	<u>Control Agent</u>
Yellow Starthistle	<i>Bangasternus orientalis</i> (weevil)
	<i>Eustenopus villosus</i> (weevil)
Puncture Vine	<i>Microlarinus lareynii</i> (weevil)
	<i>Microlarinus lypriformis</i> (weevil)

## BIOLOGICAL CONTROL OF INSECTS AND SNAILS

<u>Pest</u>	<u>Control Agent</u>
Ash Whitefly	<i>Eucarisia arthenopea</i> (wasp)
Black Scale	<i>Metaphycus helvolus</i> (wasp)
Brown Soft Scale	<i>Metaphycus luteolus</i> (wasp)
California Red Scale	<i>Aphytis melinus</i> (wasp)
Citrus Mealybug	<i>Cryptolaemus montrouzieri</i> (beetle)
Cottony Cushion Scale	<i>Encarisia sp.</i> (wasp)
Eucalyptus	<i>Cryptochaetum iceyae</i> (fly)
Long-horned Borer	<i>Aventianella longoi</i> (wasp)
	<i>Jarra phoracantha</i> (wasp)
	<i>Syngaster lepidus</i> (wasp)
Mosquitoes	<i>Bacillus thur. iraelensis</i> (baterium)
	<i>Gamusia affinis</i> (fish)
Olive Fruit Fly	<i>Psytalia concolor</i> (wasp)
Persea Mite	<i>Galendromus annectens</i> (pred. mite)
	<i>Galendromus helveolus</i> (pred. Mite)
	<i>Galendromus pilosus</i> (pred. mite)
Red Gum Lerp	<i>Plyllaephagus bliteus</i> (wasp)
Psyllid	
Red Imported Fire Ant	<i>Beauveria bassiana</i> (fungus)
Two Spotted	<i>Pseudacteon tricuspis</i> (fly)
Spider Mite	<i>Phytoseiulus persimilis</i> (pred. mite)
Vine Mealybug	<i>Galendromus occidentalis</i> (pred. mite)
	<i>Cryptolaemus montrouzieri</i> (beetle)
Western Grapeleaf Skeletonizer	<i>Ametadoria harrisinae</i> (parasitoid)
	<i>Apanteles harrisinae</i> (wasp)
Woolly Whitefly	<i>Amitus spiniferus</i> (parasitoid)
	<i>Cales noacki</i> (parasitoid)
Brown Garden Snail	<i>Rumina decollate</i> (pred. snail)

## OTHER

Enforcement of County Ordinances to control Lettuce Mosaic Virus, Agricultural Grading, Land Application of Manure and Biosolids, Cotton Plowdown, Blowing Dust, and Beekeeping.

# PEST INTERCEPTIONS - 2011

Scientific Name	Common Name (if any)	Pest Rating	No. of Interceptions
<i>Maconellicoccus hirsutus</i>	Pink Hibiscus Mealybug	A	15
<i>Solenopsis invicta</i>	Red Imported Fire Ant	A	9
<i>Pseudococcus importatus</i>	Imported Mealybug	A	6
<i>Fusarium oxysporum</i>	Palm Wilt Disease	A	3
<i>Pseudaulacaspis cockerilli</i>	False Oleander Scale	A	2
<i>Pseudaulacaspis pentagona</i>	White Peach Scale	A	1
<i>Aonideilla aurantii</i>	California Red Scale	B	10
<i>Protopulvinaria pyriformis</i>	Pyriform Scale	B	2
<i>Paracoccus</i> sp.	A Mealybug	Q	14
<i>Hypogeococcus pungens</i>	Cactus Mealybug	Q	5
<i>Sitobion luteum</i>	Yellow Orchid Scale	Q	3
<i>Dendrothrips howei</i>	Thrips	Q	2
<i>Margattea nimbata</i>	Cockroach	Q	2
<i>Miscanthicoccus miscanthi</i>	Grass Mealybug	Q	2
<i>Pseudaulacaspis brimblecombei</i>	Maskell Scale	Q	2
<i>Pulvinaria delottoi</i>	Ice Plant Scale	Q	2
<i>Pulvinaria</i> sp.	A Scale	Q	2

## PEST INTERCEPTIONS - 2011

Scientific Name	Common Name (if any)	Pest Rating	No. of Interceptions
<i>Aulacaspis yaumatsui</i>	Cycad Scale	Q	1
<i>Chaetanaphothrips signipennis</i>	Orchid Thrips	Q	1
<i>Franklineilla schultzei</i>	Tomato Thrips	Q	1
<i>Heterogaster urticae</i>	Nettle Ground Bug	Q	1
<i>Hylurgus ligniperda</i>	Bark Beetle	Q	1
<i>Naupactus sp.</i>	White Fringed Beetle	Q	1
<i>Nipaecoccus sp.</i>	Palm Mealybug	Q	1
<i>Orchamoplatus mammaererus</i>	Croton Whitefly	Q	1
<i>Planococcus sp.</i>	A Mealybug	Q	1
<i>Technomyrmex albipes</i>	White Footed Ant	Q	1

"A" is an organism of known economic importance subject to state (or Agricultural Commissioner) enforcement action.

"B" is an organism of known economic importance subject to enforcement action at the discretion of the Agricultural Commissioner.

"Q" is an organism suspected to be of economic importance but its status is uncertain because of incomplete or inadequate information.

## PEST INTERCEPTION SUMMARY 2007 - 2011

<u>Year</u>	<u>Total</u>	<u>A</u>	<u>B</u>	<u>Q</u>
2011	92	36	12	44
2010	38	4	11	23
2009	72	13	21	38
2008	131	58	39	34
2007	72	7	22	43

# STAFF MEMBERS - 2011

## **Agricultural Commissioner / Sealer of Weights and Measures**

John Snyder

### **Executive Assistant**

Patrice Wyatt

## **Assistant Agricultural Commissioner / Sealer of Weights and Measures**

G. Dustin Wiley

### **Deputy Agricultural Commissioner / Sealer**

Ron Bray

Bill Oesterlein

Robert Mulherin

Bill Tracy

### **Supervising Agricultural & Standards Investigator**

Don Domenigoni

Suzanne Nickau

Erin Freeman

Keith Selnick

Dean Gottlieb

### **Agricultural & Standards Investigators**

Rick Allert

Kevin Doi

Ting Hsiung

Harry Loukatos

Megan Barron

Eric Downs

Yadira Jimenez

Victor Miranda

Lucy Candelario

Jacquelyne Drainville

Delia Jimenez-Cioc

Diana Nguyen

Jennifer Chandler

Tom Finan

Charles Kregl

Jose Quintero

Ven Chien

Julius Francisco

Mike Lahti

Hugo Soto

Courtney Cooper

Gabriel Gowman

Brian Larson

Michele Tracy

Andrea Dillon

Charles Hardesty

Jeremy Larson

Stephanie Van Stockum

Tom Hought

Arturo Lomeli

### **Weights and Measures Inspector**

Steve Bennett

Doug Simmons

### **Clerical Support Staff**

Kelly Briggs

Cyntia Ramos

Tara Buffington

Veronica Sanchez

Elisa Monteil

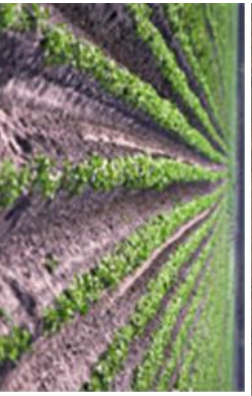
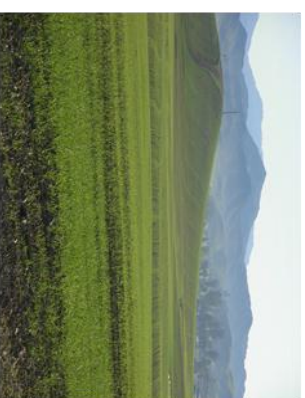
**RIVERSIDE COUNTY  
AGRICULTURAL COMMISSIONER'S OFFICE**



**DECEMBER 2011**

Riverside County  
Agricultural Commissioner's Office  
P.O. Box 1089  
Riverside, CA 92502-1089

# RIVERSIDE COUNTY AGRICULTURE



GROWING FOR OUR FUTURE