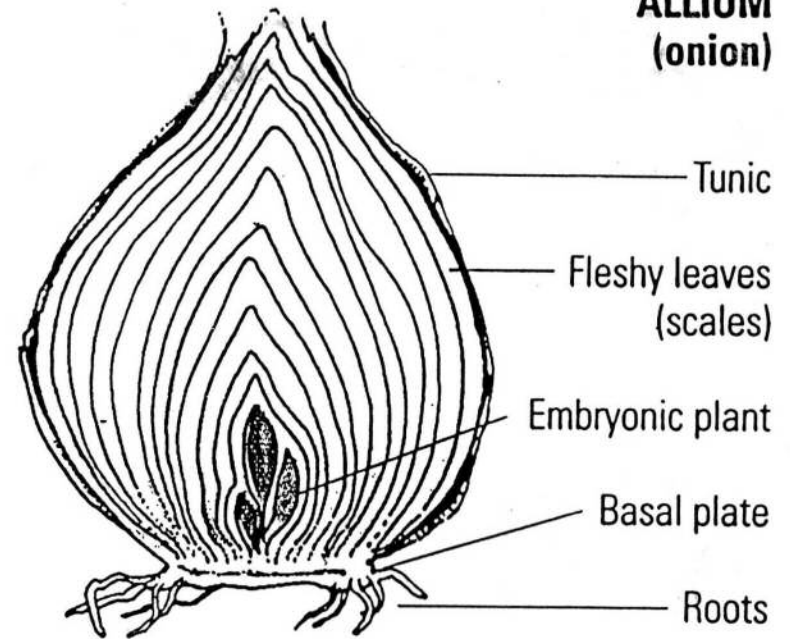


Bulbs

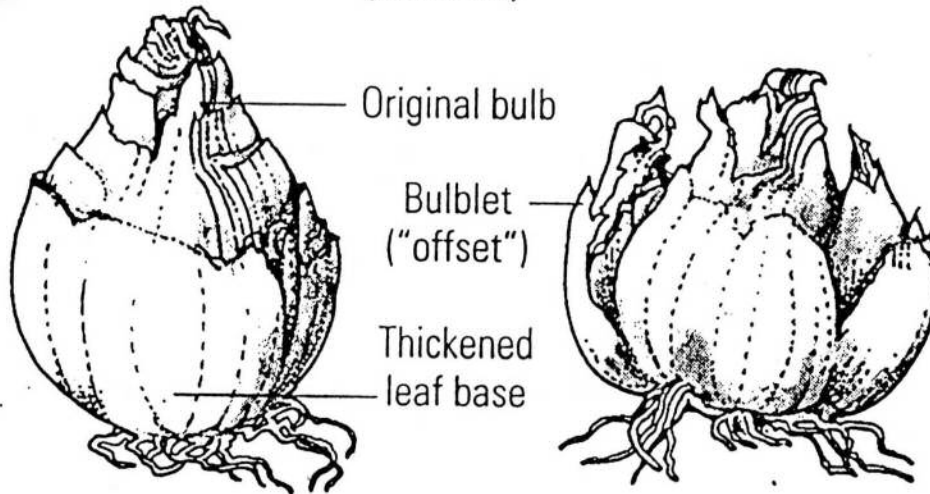


Bulb

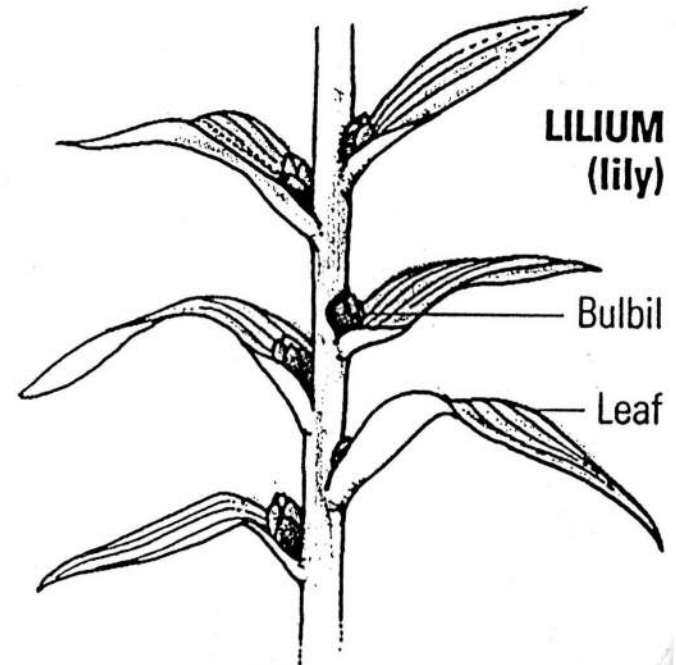
**ALLIUM
(onion)**



**NARCISSUS
(daffodil)**



**LILIUM
(lily)**



Spanish bluebell

*Hyacinthoides
hispanica*



John Peller



by Coanri/Rita

Zephyranthes candida



Wong Lau

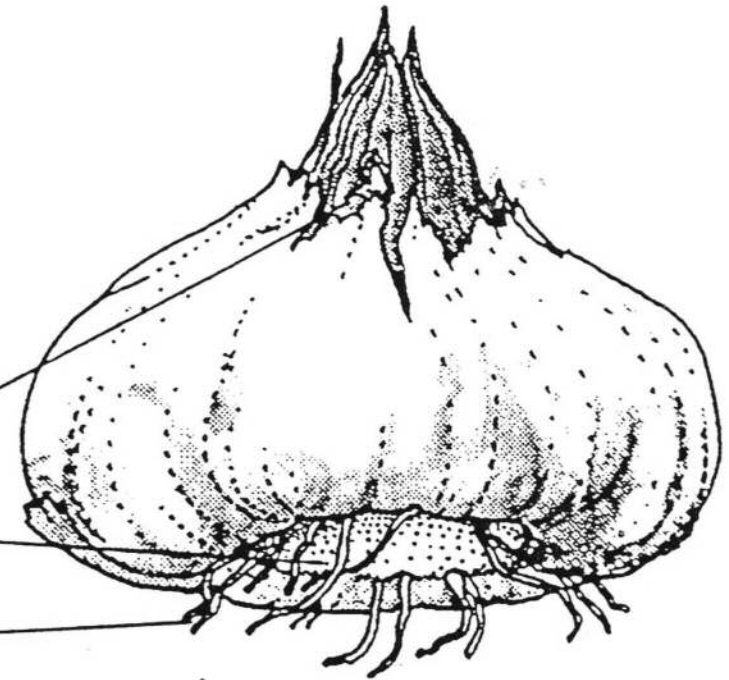
Corm

GLADIOLUS

Dead leaf bases

Basal plate

Roots

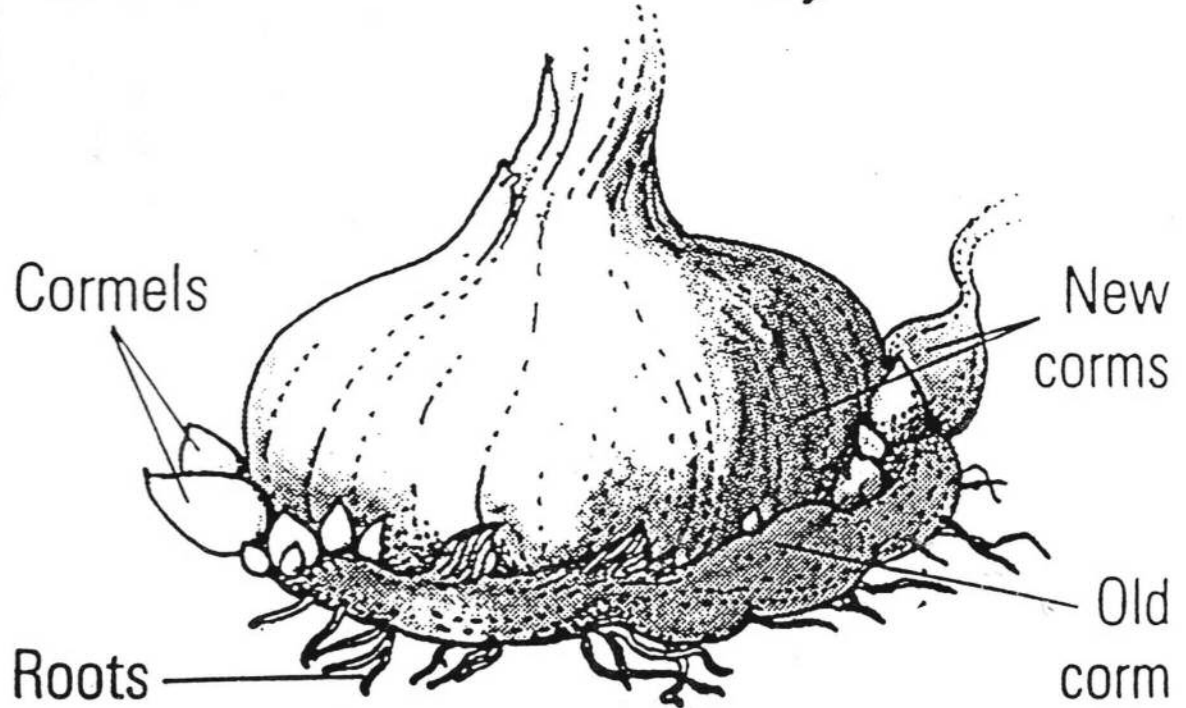


Cormels

New corms

Roots

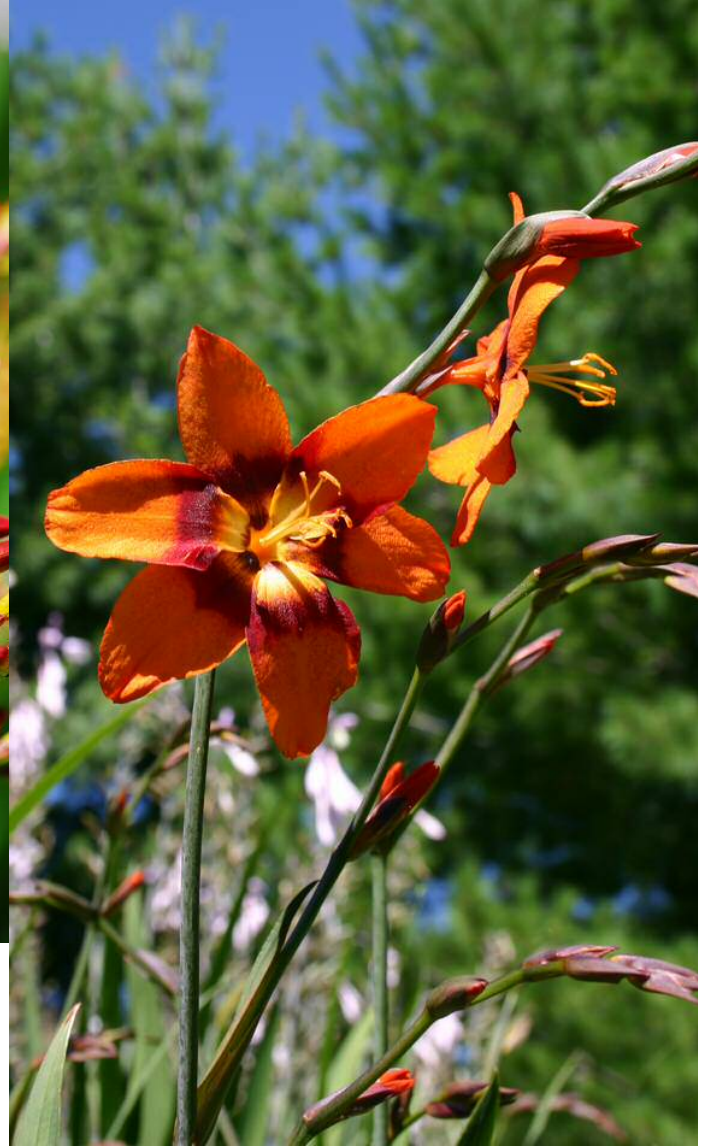
Old corm



Crocosmia



Rudoni Productions



Watsonia



Pacific Bulb Society

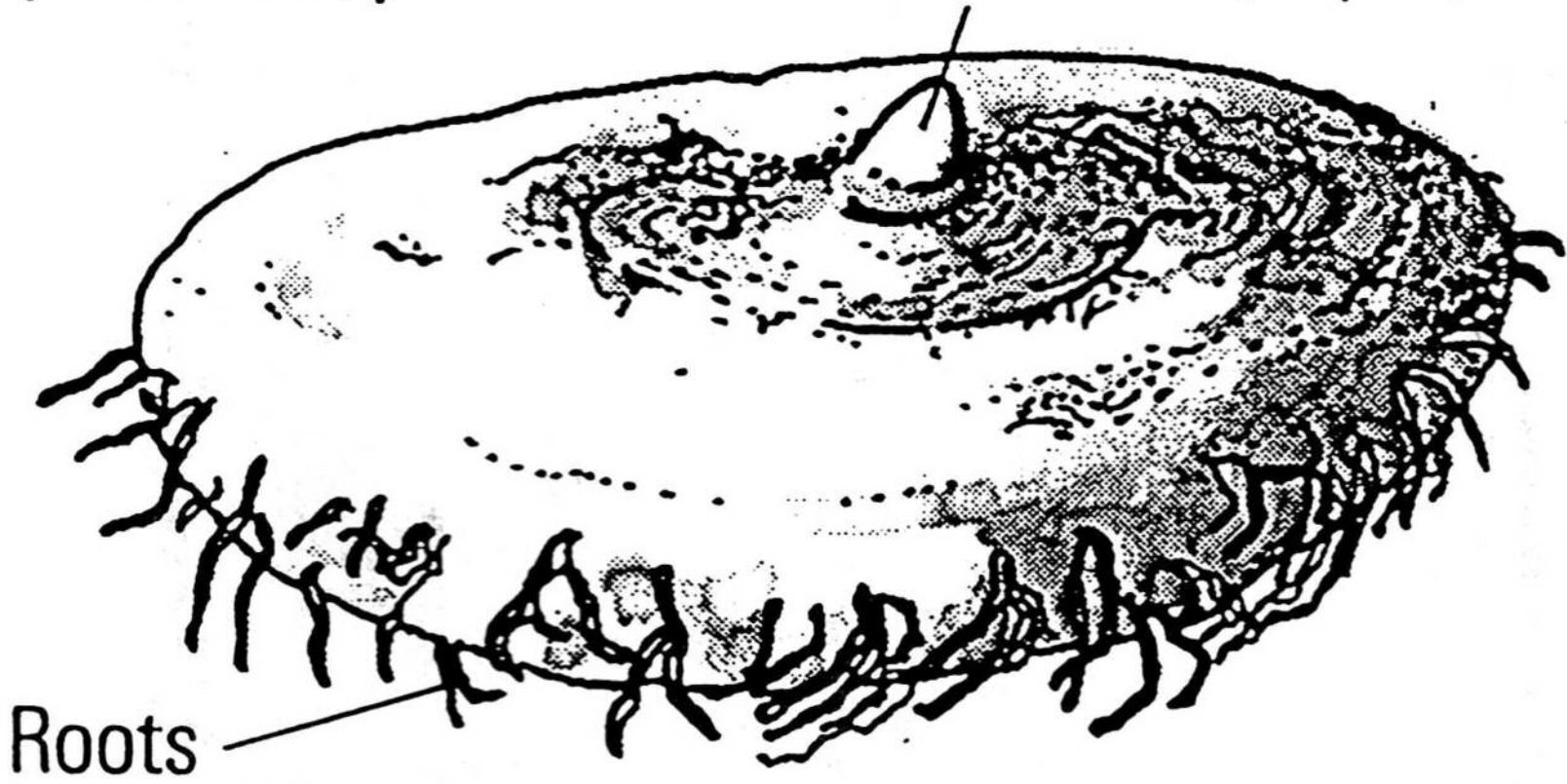


Fine Bush People

Tuber

BEGONIA
(tuberous)

Growth bud ("eye")





sarahraven.com/articles/growing_anemone_coronaria

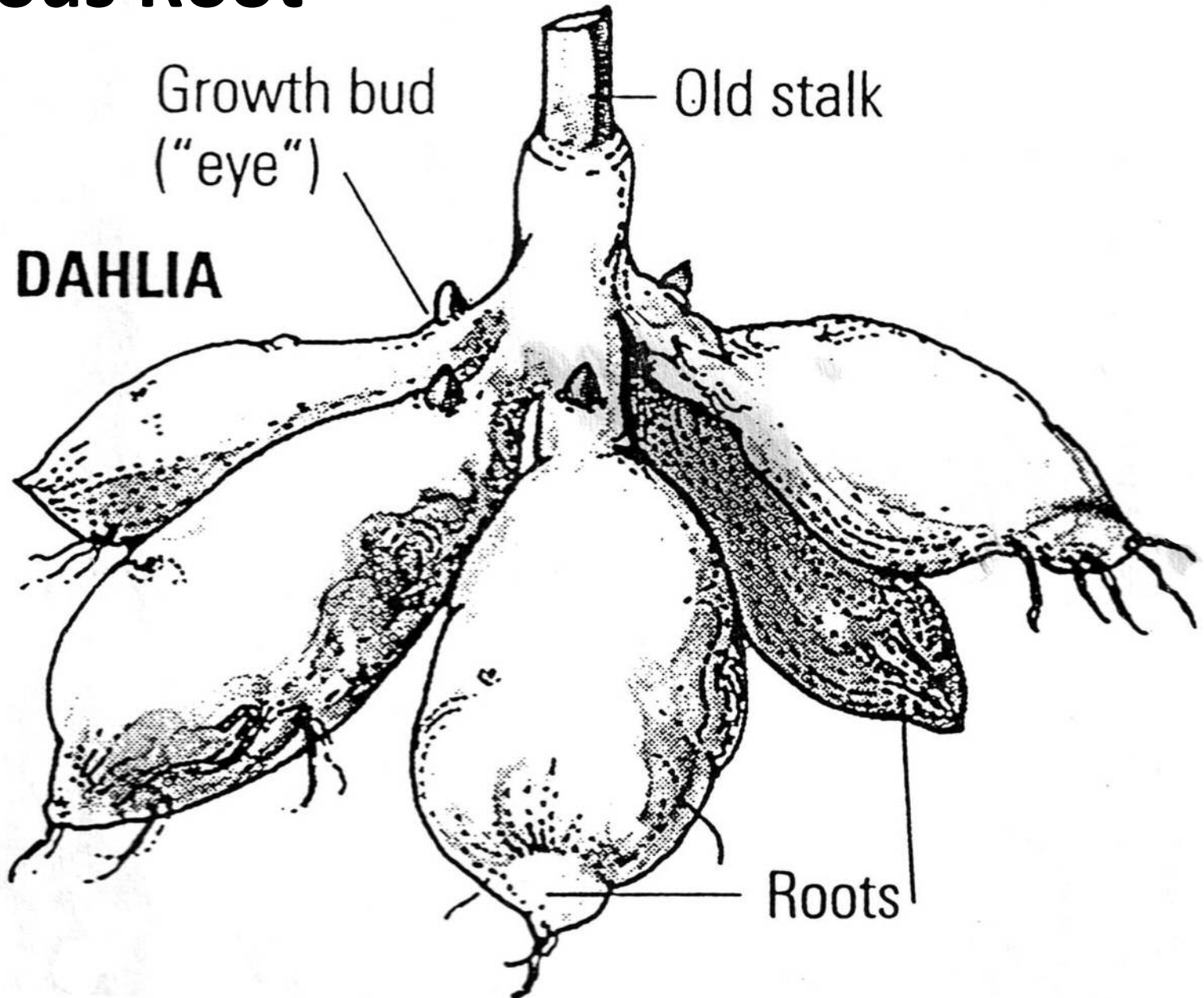
Zachy Evenor

Anemone – Tuberos A. *coronaria*

Cyclamen



Tuberous Root

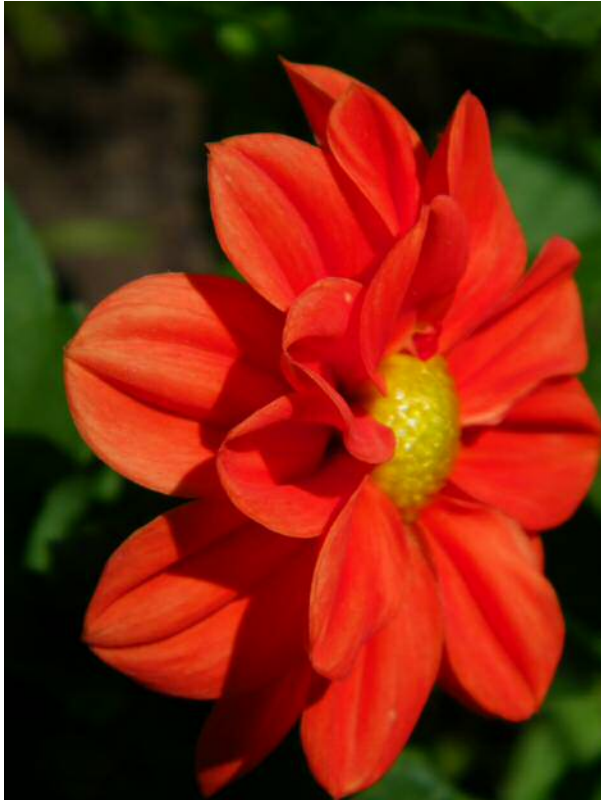




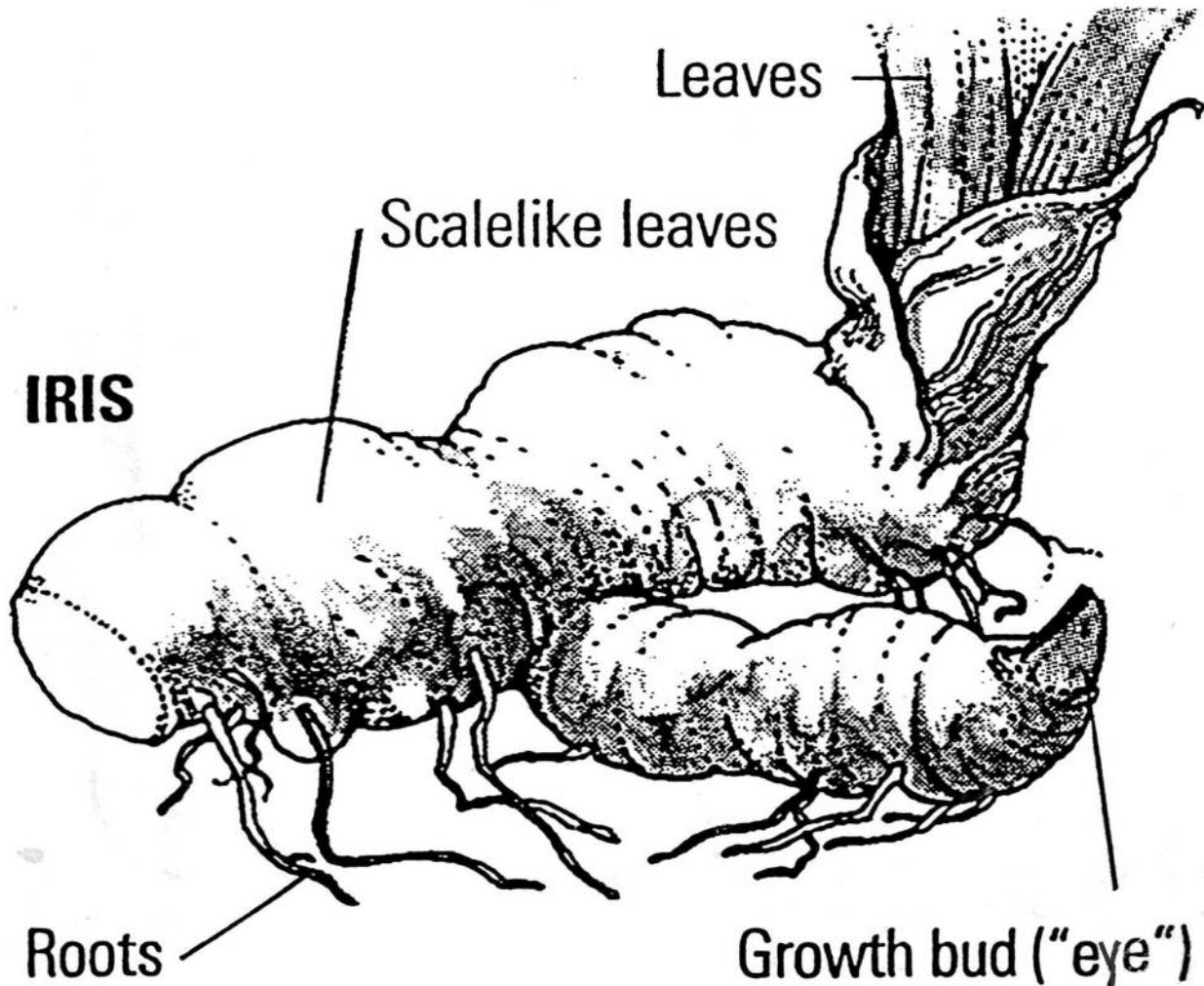
Alstroemeria

Dahlia

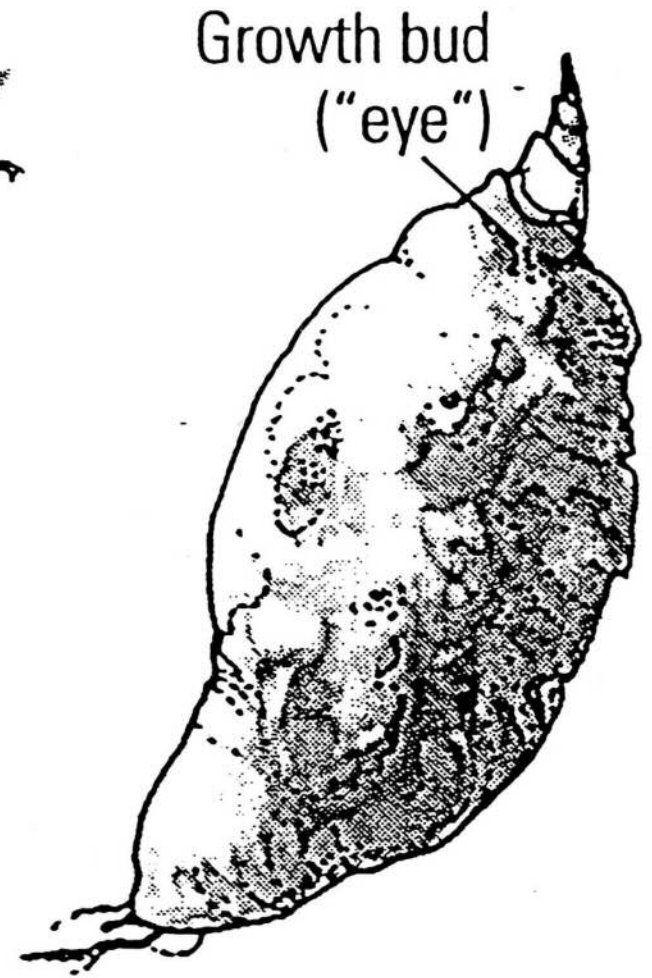
Dwarf Dahlia



Rhizome



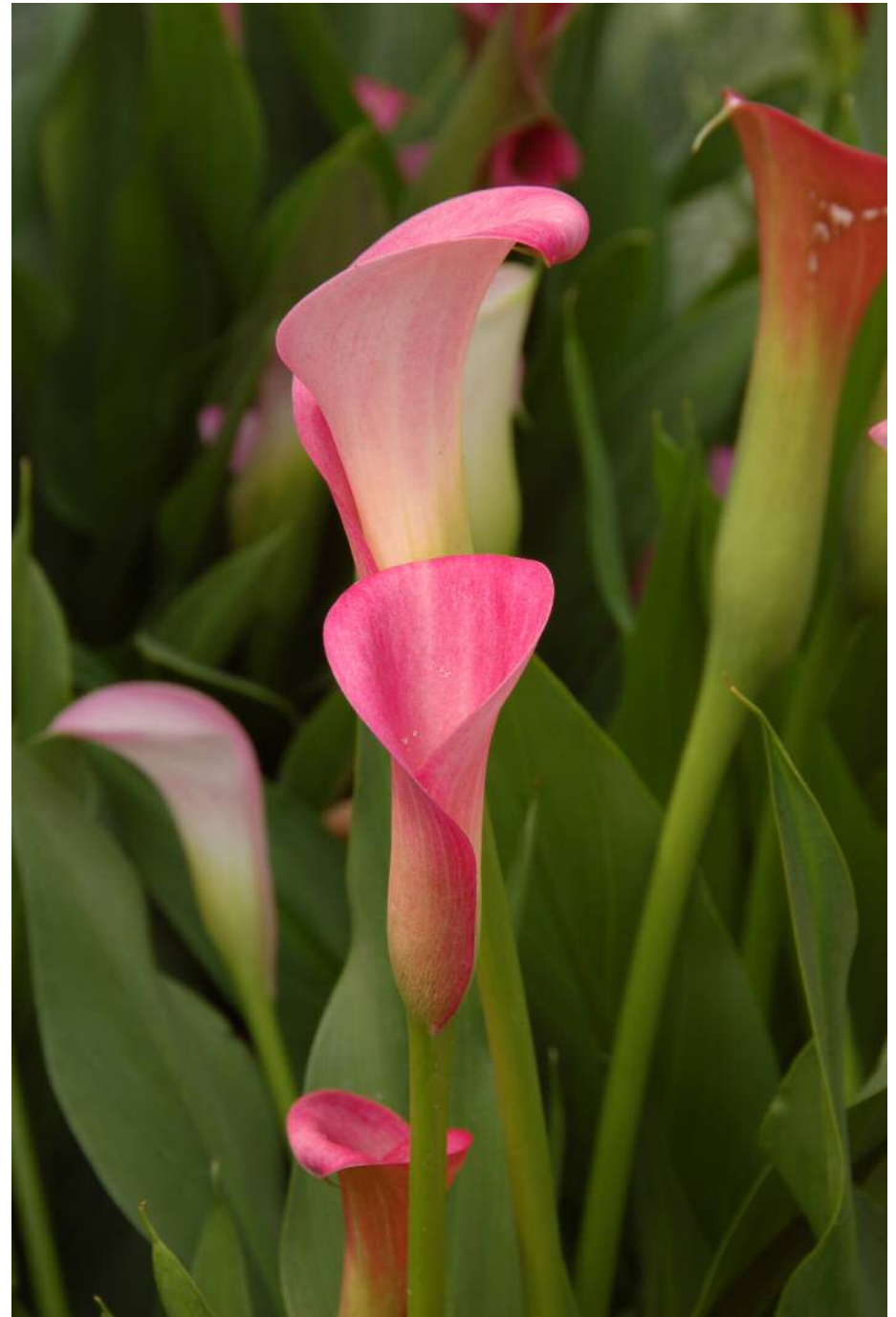
ZANTEDESCHIA (calla)



Calla *Zantedeschia*



VanMeuen



Native Iris *Iris douglasiana*



UCANR Arboretum



Br. Alfred Brousseau, Saint Mary's College

Pests & Diseases

Aphids



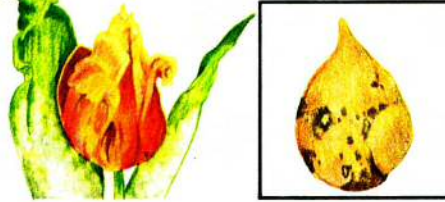
Common Hosts

Anemone Dahlia Hyacinthus Lilium
 Begonia Gladiolus Iris Tulipa

Damage

Curled or twisted leaves
 Yellowing of foliage
 Spread of virus disease
 Honeydew secretion attracts ants

Botrytis



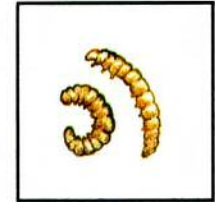
Common Hosts

Tuberous Dahlia Hyacinthus Narcissus
 begonia Gladiolus Lilium Tulipa

Damage

Spotted, then blighted leaves and flowers
 Slimy, collapsed leaves or flowers
 Gray, fuzzy mold on plant

Cutworm, spotted



Common Hosts

Amaryllis

Damage

Eats flowers

Fungus diseases



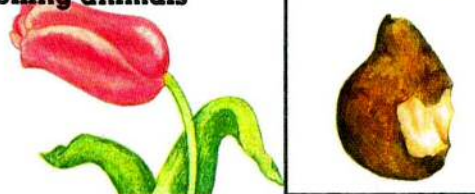
Common Hosts

Most bulbs

Damage

Stunted yellow growth
 Mushy or dried out bulbs

Gophers and other ground-dwelling animals



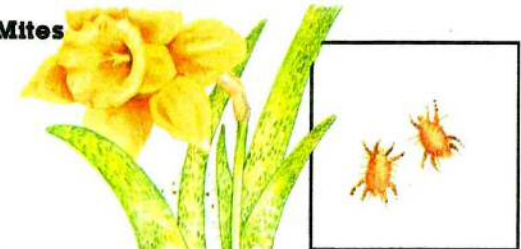
Common Hosts

Tulipa, Crocus, and many others

Damage

Eat bulbs

Mites



Common Hosts

Amaryllis Cyclamen Hyacinthus Narcissus
 Begonia Freesia Lilium Tulipa
 Crocus Gladiolus

Damage

Speckled leaves
 Lack of growth

Pests & Diseases

Narcissus fly larvae



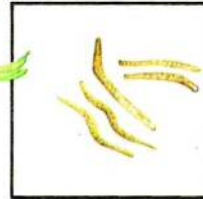
Common Hosts

Amaryllis Hymenocallis Narcissus
Galanthus Leucojum Zephyranthes

Damage

Eat bulb centers
Yellow, deformed leaves
Stunted growth

Nematodes



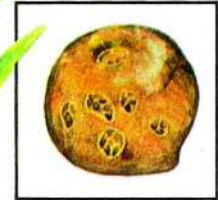
Common Hosts

Dahlia Hyacinthus Lycoris
Galanthus Iris Narcissus
Gladiolus Lilium Tigridia

Damage

Deformed or split leaves
Yellow and brown blotches on foliage
Browned bulb tissue

Scab



Common Hosts

Gladiolus

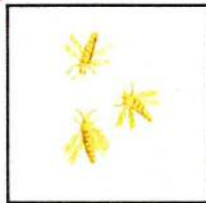
Damage

Lesions on corms
Spotted leaves

Control

Dust corms with fungicide.
Discard infested corms.

Thrips



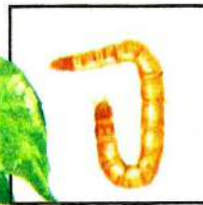
Common Hosts

Allium Begonia Freesia Lilium
Amaryllis Dahlia Gladiolus Sinningia

Damage

Streaks of gray or brown on foliage or flowers
Sticky brown surface on stored bulbs

Wireworms



Common Hosts

Begonia Dahlia Gladiolus

Damage

Eat their way through stems causing plants to collapse.

Slugs and snails



Common Hosts

Agapanthus Dahlia Tulipa
Canna Lilium

Damage

Holes in leaves
Eat young shoots
Slime trails

Caring for Bulbs





Anemone – Rhizomatous *A. nemorosa*

"Anemone nemorosa LC0256" by Jörg Hempel.
Licensed under CC BY-SA 3.0 de via Commons - https://commons.wikimedia.org/wiki/File:Anemone_nemorosa_LC0256.jpg#/media/File:Anemone_nemorosa_LC0256.jpg



Glory of the Snow

Chionodoxa



Snowdrops *Galanthus elwesii*



by Tie Guy II

Autumn crocus *Sternbergia lutea*



***Tulipa
clusiana***



Toronto Gardens

***Tulipa
Greiggii***

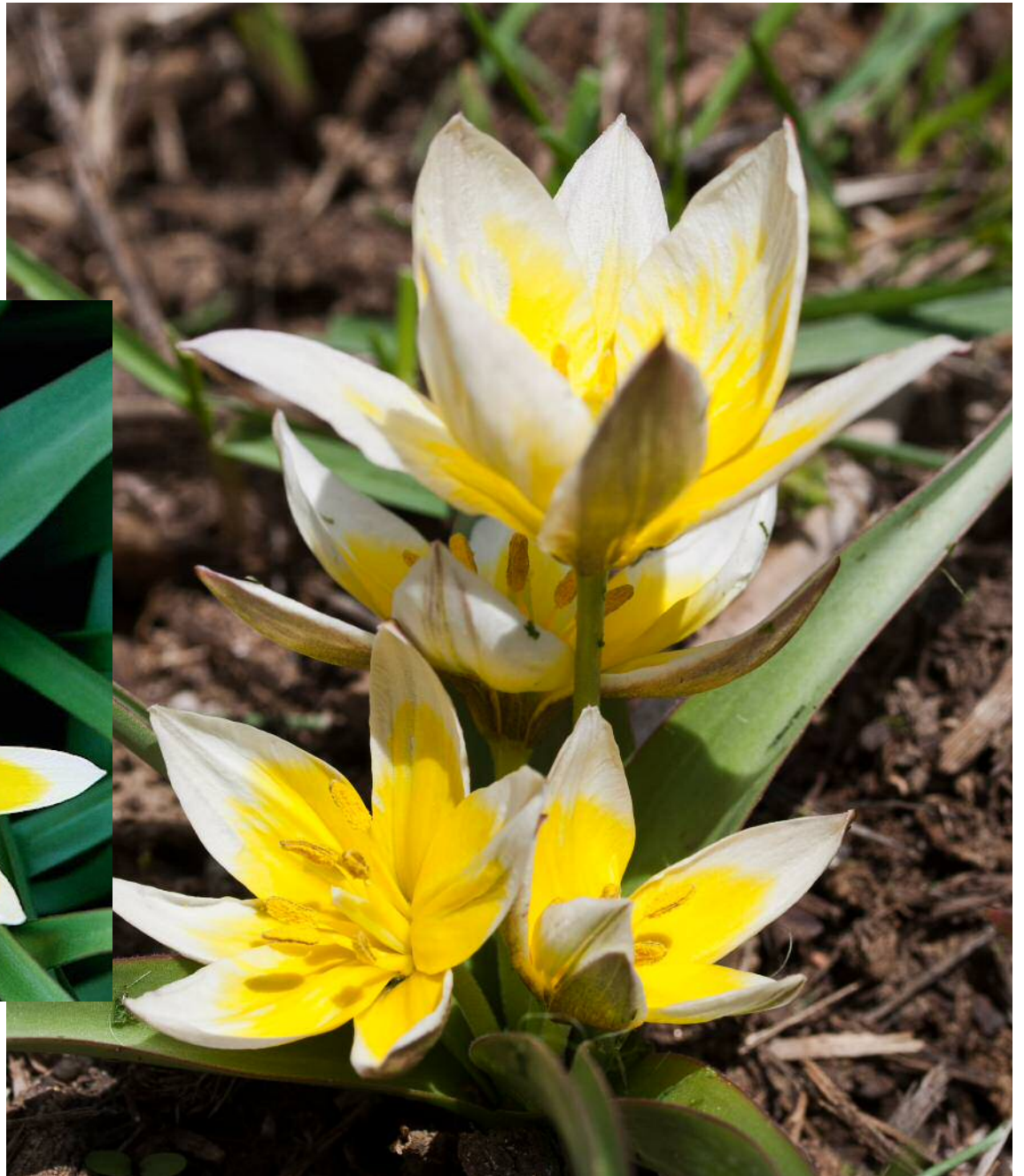


Tulip Quebec

Waterlily Tulip *Tulipa Kaufmanniana*



***Tulipa
tarda***



Tulip Quebec

Planting



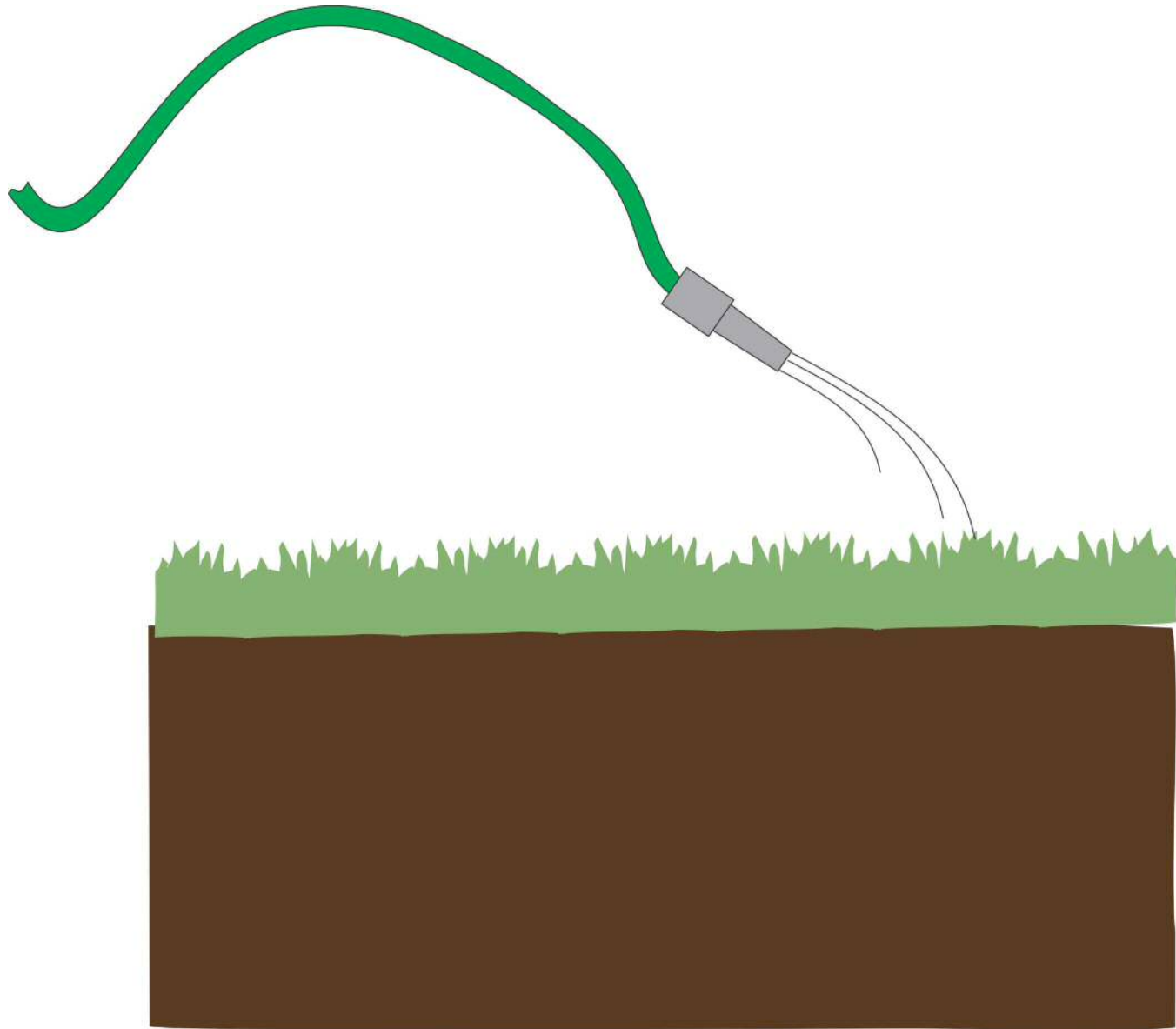
Formal bed



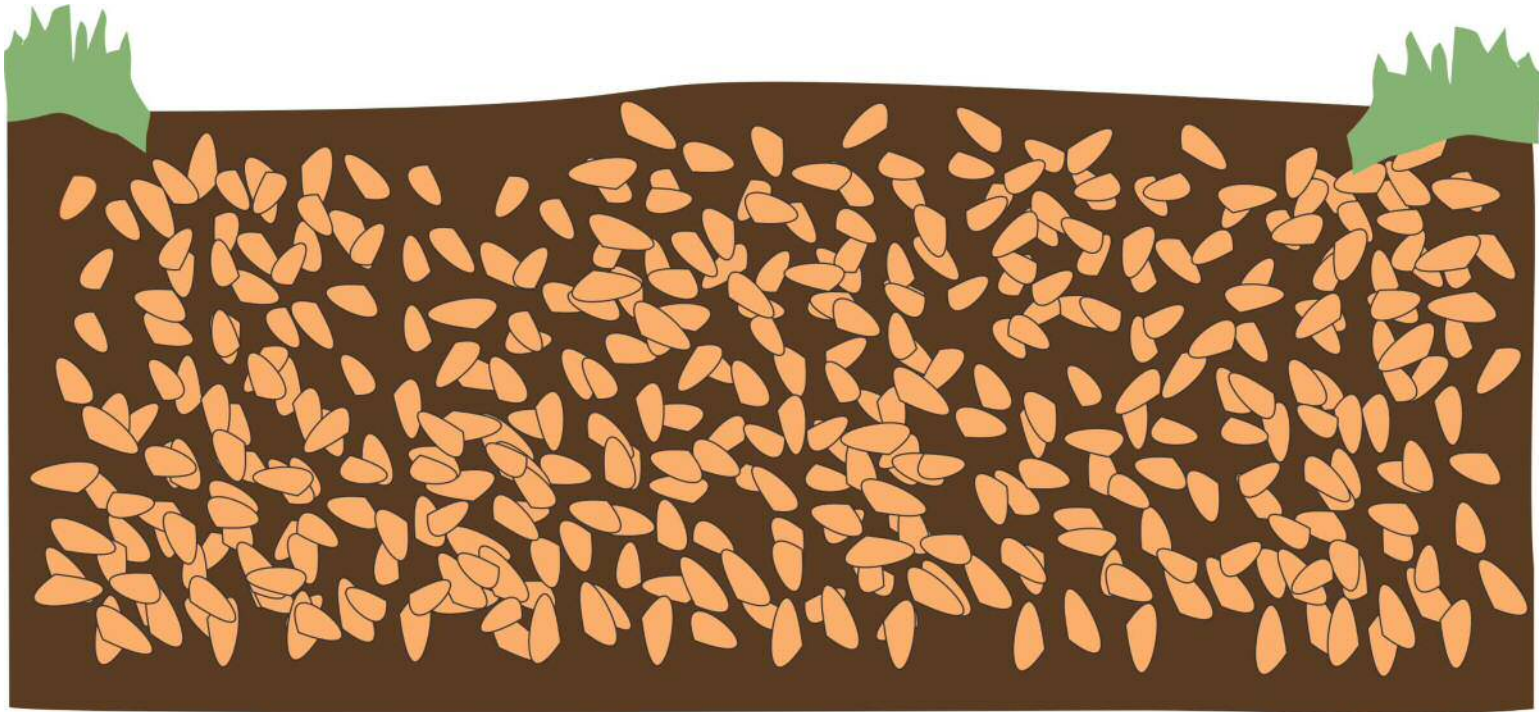
Informal bed



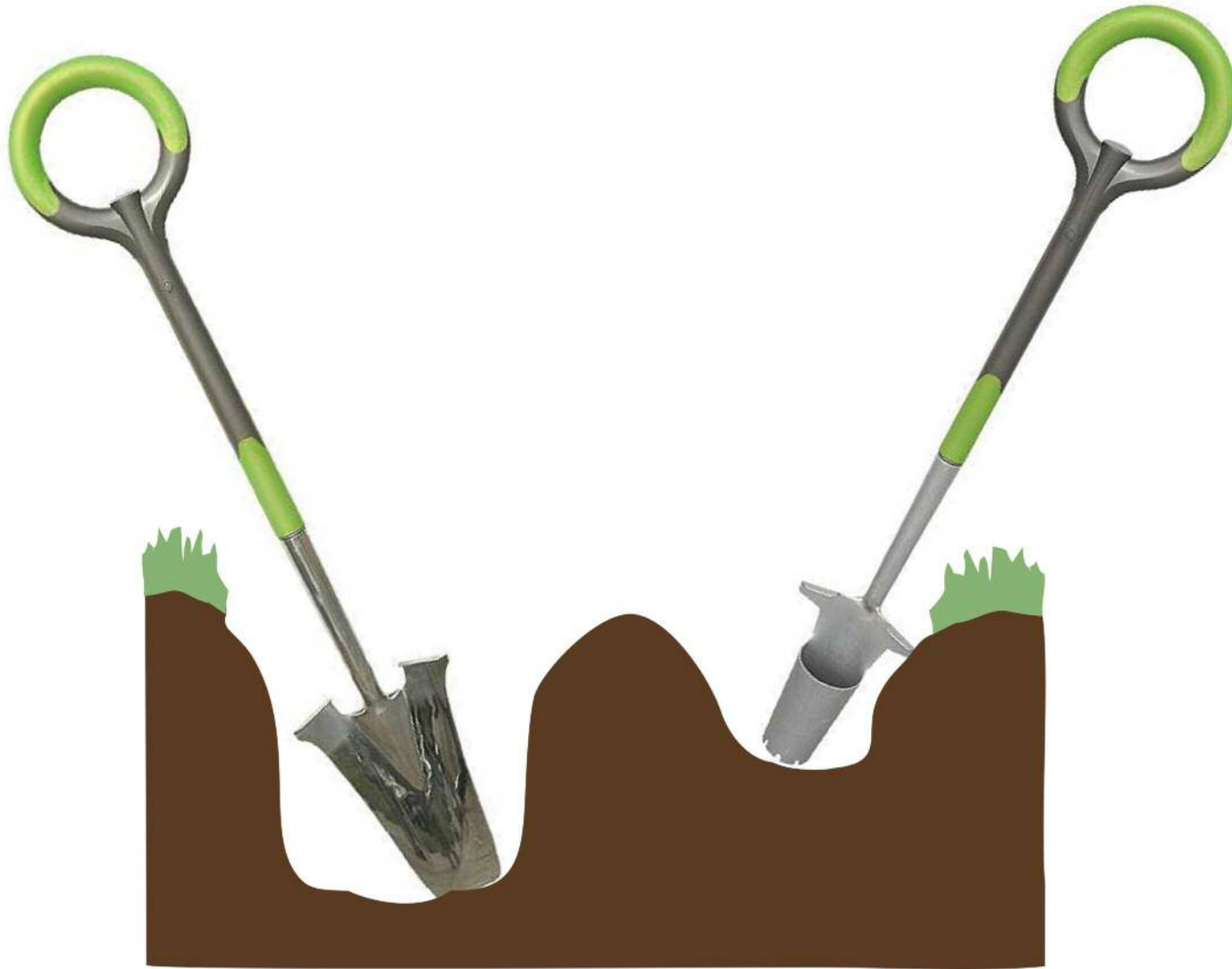
Water the area



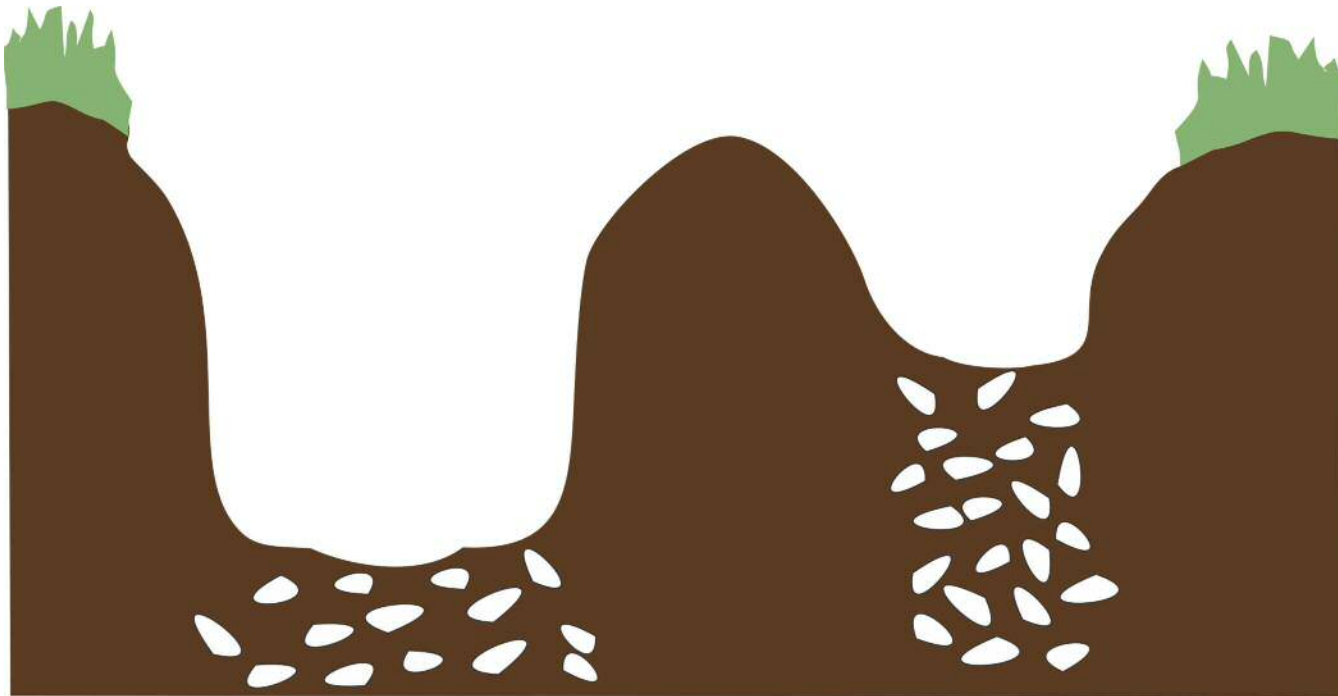
Dig in some compost



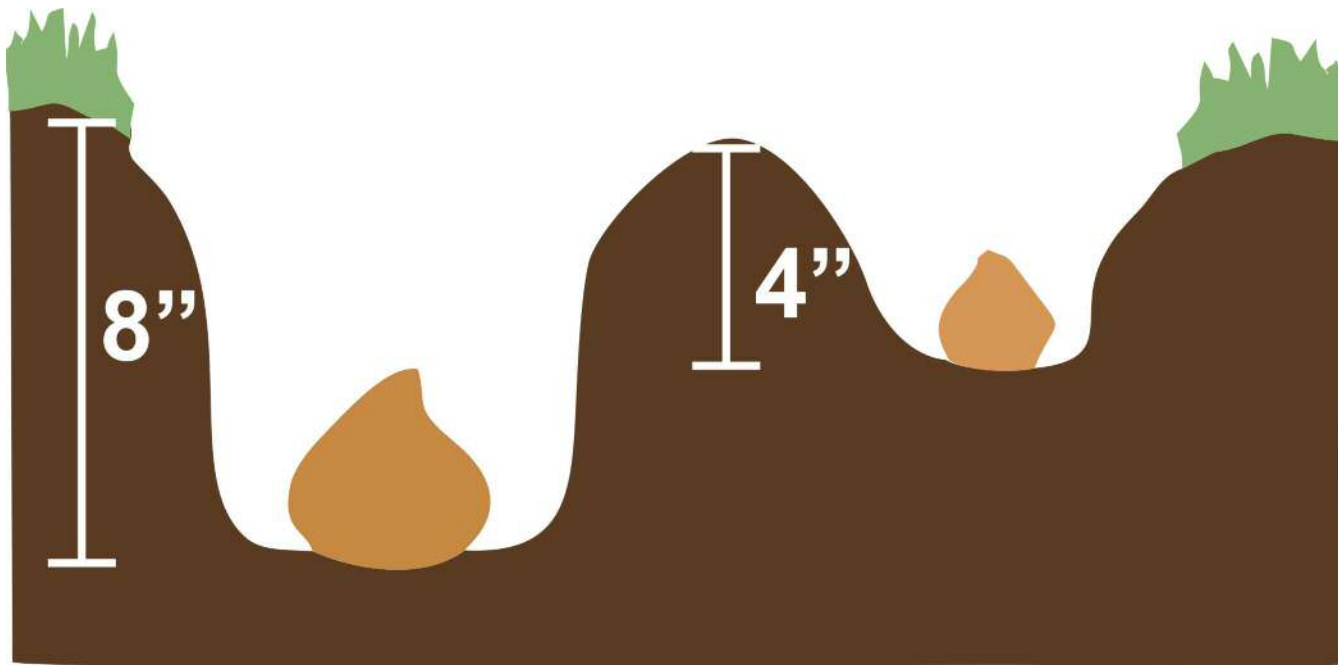
Digging tools for bulbs



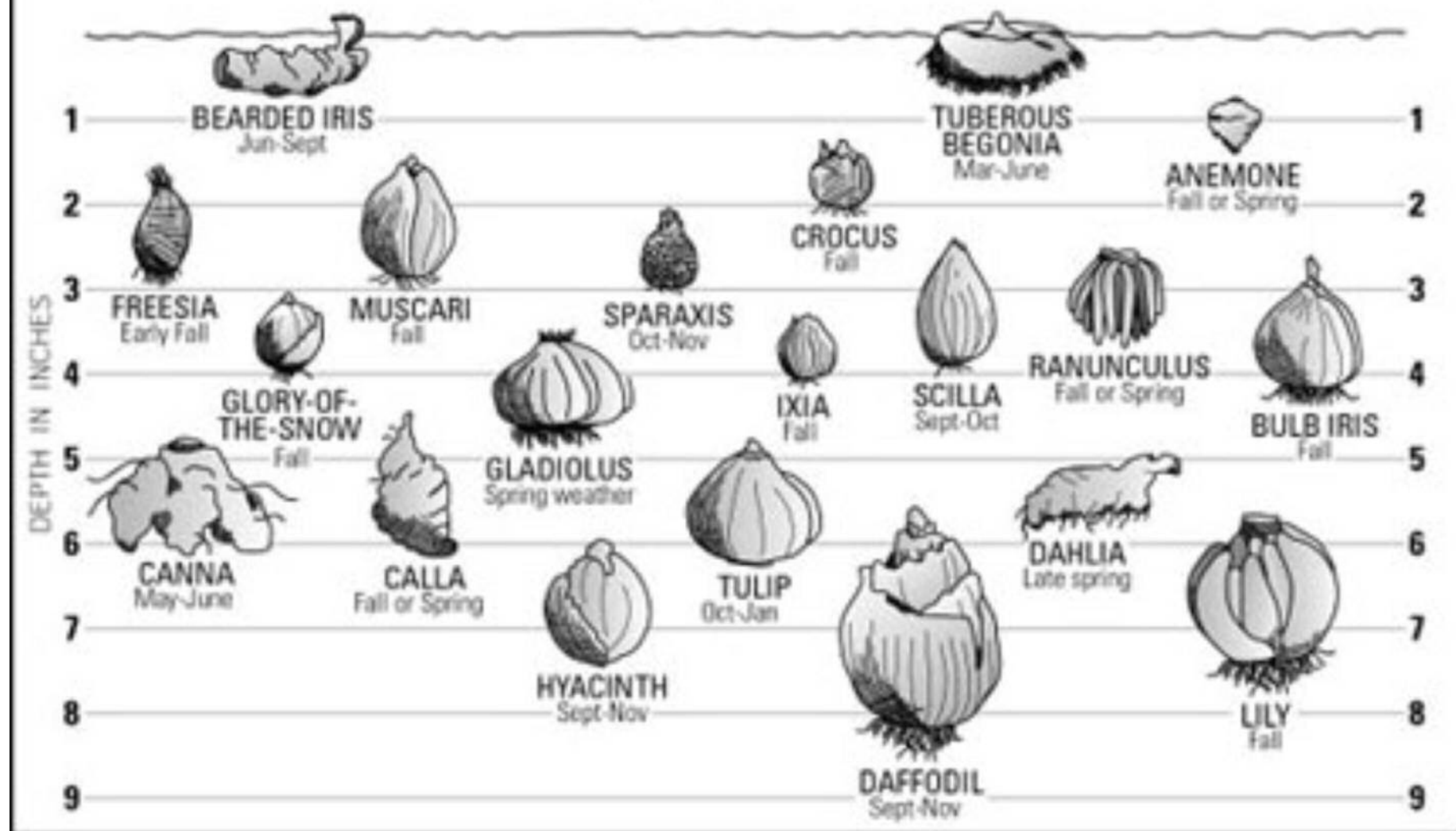
**Bone meal – High phosphorus
fertilizer where roots will be**



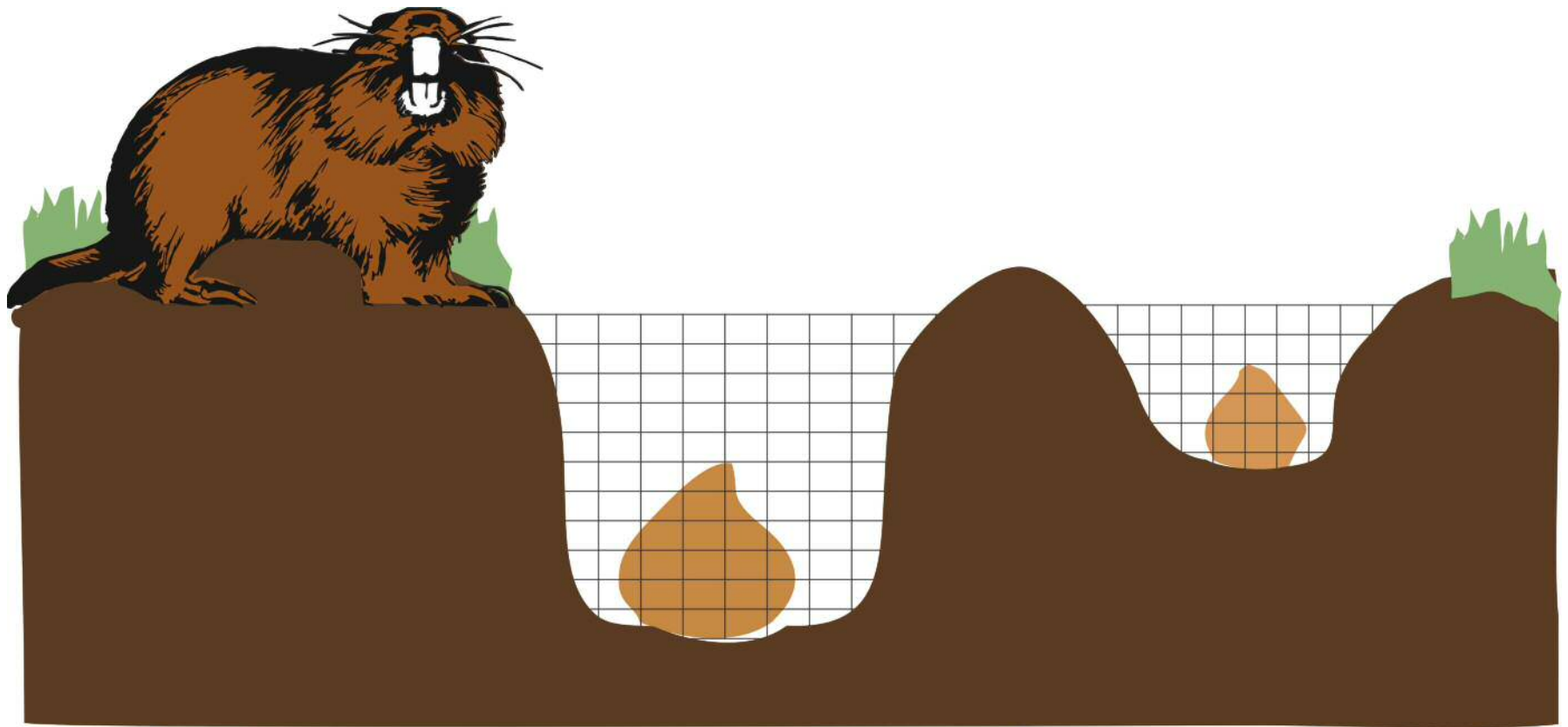
Add bulbs at correct depths



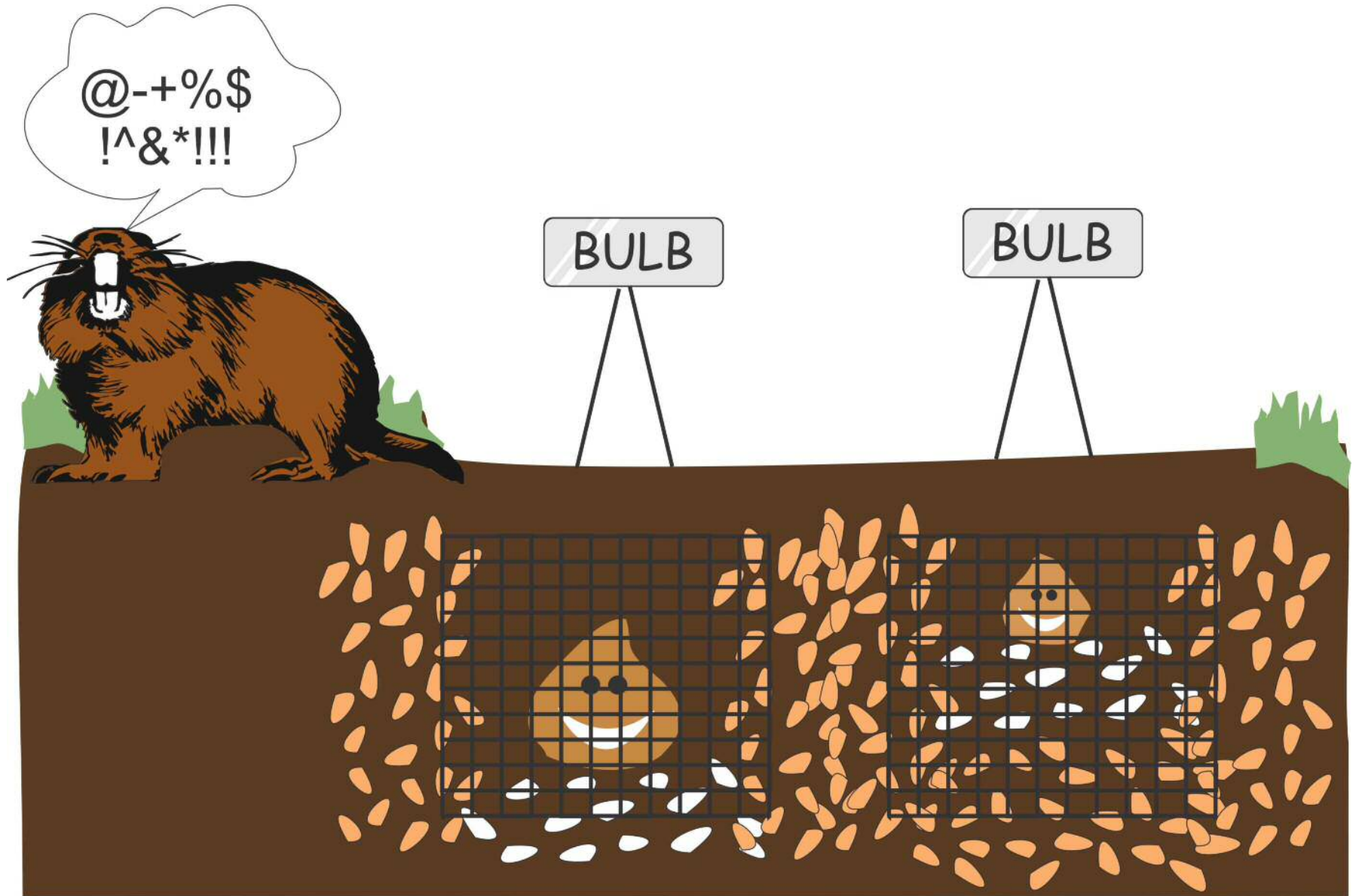
Planting Depths for Bulbs



Vertebrate pests



Planted Bulbs



Bulbs

To grow in Napa County



Autumn Crocus

Colchicum



by M. Martin Vicente