

Dairy Goat Breeds

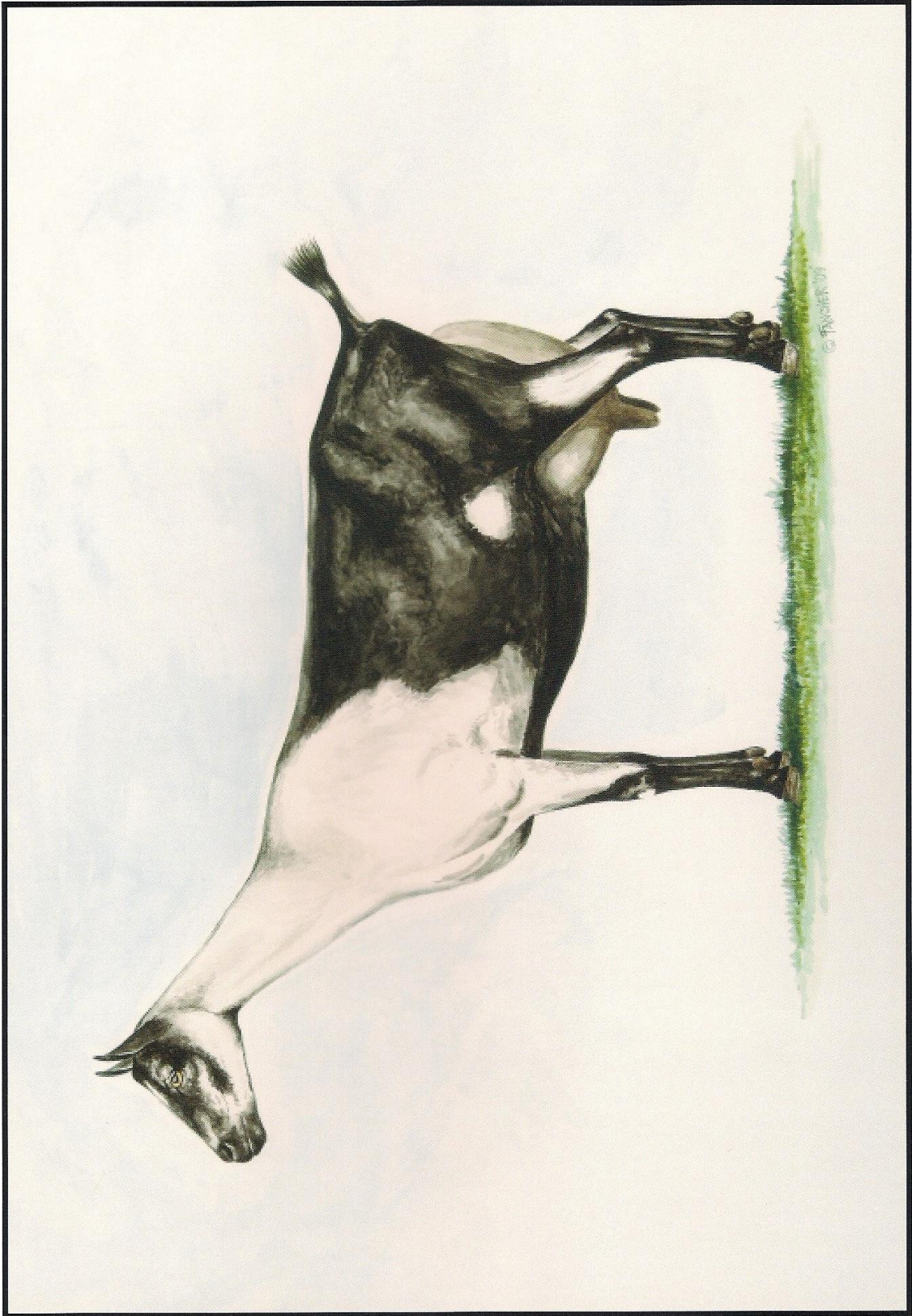
Jake Dowell

Spring Valley 4-H

Emerald Star Project 2016

Table of Contents

Alpine 4
LaMancha..... 6
Nigerian Dwarf 8
Nubian 10
Oberhasli 12
Saanen 14
Sable 16
Toggenburg 18



Alpine

The Alpine dairy goat is medium to large size animal, alertly graceful with erect ears. They are hearty and thrive in any climate.

Origin: French Alps

Breed Characteristics:

Size: Medium to large. Does at least 30 inches tall

Color: There are several recognized colors. Toggenburg markings and solid white are discriminated against. Alpine colors are described by using the following terms.

Cou Blanc - white front quarters and black hind quarters with black or gray markings on the head

Cou Clair - front quarters are tan, saffron or off white, or shading gray with black hind quarters

Cou Noir - black front quarters and white hind quarters

Sundgau - black with white markings such as underbody, facial stripes. etc.

Pied - Spotted or mottled

Chamoisee - brown or bay characteristic markings are black face, dorsal stripe, feet and legs and sometimes a martingale running over the withers and down to the chest

Two-Tone Chamoisee - light front quarters with brown or gray (not black) hind quarters

Broken Chamoisee - a solid chmoisee broken with another color (banded or splashed)

Ears: Erect

Face: Straight nose

Lactation:

Average Lbs per Year: 840-5300

Butterfat: 3.5%



LaMancha

The LaMancha goat was developed in the United States. It has excellent dairy temperament and is an all around sturdy animal. The LaMancha face is straight with the ears being the distinctive breed characteristic.

Origin: United States (California)

Breed Characteristics:

Size: Medium to large, at least 28 inches tall and 130 lbs.

Color: Any color or pattern

Ears: Absent or very small external ears, defined as follows,

Gopher - Approximate maximum length of 1 inch, but preferably nonexistent with very little or no cartilage. The end of the ear must be turned up or turned down. This is the only type of ear that will make a buck eligible for registration.

Elf - Approximate maximum length of 2 inches. The end of the ear must be turned up or turned down. Cartilage shaping the small ear is allowed.

Face: Straight

Lactation:

Average Lbs per Year: 1,050-3,510

Butterfat: 3.9%



Nigerian Dwarf

The Nigerian Dwarf is a miniature breed of dairy goat originating in West Africa and developed in the United States. The balance proportions of the Nigerian Dwarf give it the appearance of the larger breeds of dairy goats.

Origin: West Africa

Breed Characteristics:

Size: Does stand no more than 22.5" and bucks stand no more than 23.5"

Color: Any color or combination of colors is acceptable.

Ears: Medium length ears are erect and alert

Face: Either straight or dished

Lactation:

A healthy Nigerian Dwarf doe can produce a surprising amount of sweet milk for her small size – up to two quarts per day. Nigerian Dwarf milk is higher in butterfat (6-10 percent) and higher in protein than milk from most dairy goat breeds. However, many Nigerian Dwarf owners do not raise their goats for milk but for the pleasure and companionship.



Nubian

The Nubian is the most popular dairy goat breed. It is a relatively large breed. It is distinguished by its long, drooping ears and Roman nose. While Nubians may not produce as much milk on average as other breeds, they are known for high butterfat content. Since they originated in Africa, Nubians thrive in warm weather, but they can handle just about any climate. Nubian coloration ranges from white, browns and reds to black. Combinations of these colors also occur, but there are no set patterns.

Origin: Mixed African, Asian and European origin

Breed Characteristics:

Size: Medium to large, at least 30 inches tall and 130 lbs. Meatier than other dairy breeds

Color: any color or pattern

Ears: Long, pendulous usually reach to a 1/2 inch past the muzzle

Face: Convex (roman nose)

Lactation:

Average Lbs per Year: 640-3,670

Butterfat: 4.8%



Oberhasli

The Oberhasli is a Swiss dairy goat. The breed is medium in size. Its color is chamoisee. Does may be black, but chamoisee is preferred. The Oberhasli's color is its defining characteristic. Chamoisee is described as Bay, ranging from light to deep red hay with deep red hay being preferred. Markings are two black stripes down the face from above each eye to a black muzzle. The forehead should be nearly all black. Black stripes from the base of each ear coming to a point just back of the poll and continuing along the neck and back as a dorsal stripe to the tail. Black belly, black legs and light gray to black udder. White hairs are discriminated against.

Origin: Switzerland

Breed Characteristics:

Size: Medium to large, at least 28 inches tall and 120 lbs. (Same as LaMancha)

Color: Chamoisee, black dorsal stripe, udder, barrel and legs, rest is red.

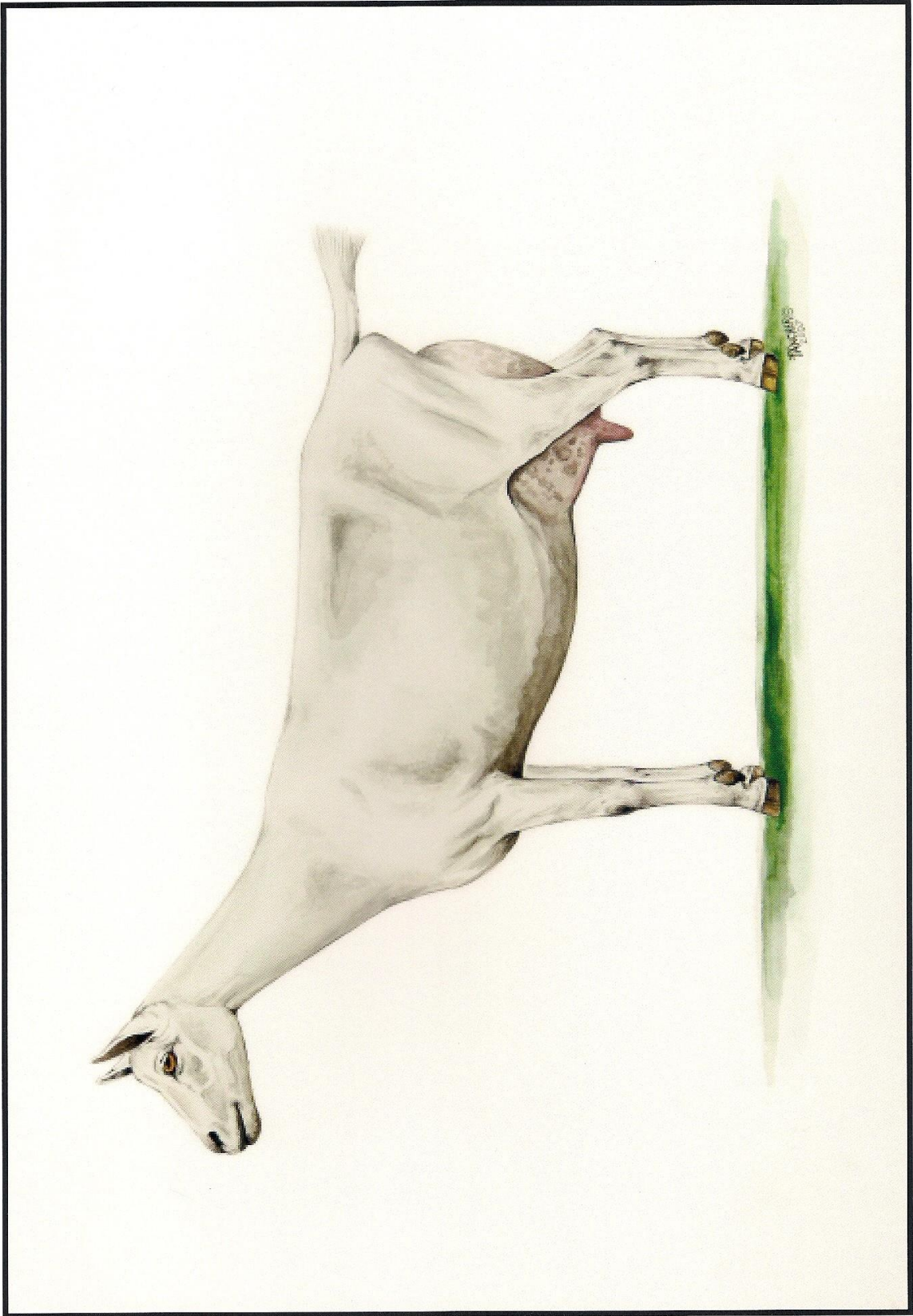
Ears: Erect

Face: Straight or dished. A Roman nose is discriminated against.

Lactation:

Average Lbs per Year: 990-3,630

Butterfat: 3.5%



Saanen

Saanens are white or light cream in color. White is preferred. Saanens have erect ears and dished faces that are just the opposite of the Nubian's Roman nose. Small spots of color on the hair are allowable, but not desirable. A roman nose is discriminated against. On average Saanens produce the most milk. The breed is heavily represented among the ranks of record producers. Their color is their distinct characteristic.

Origin: Switzerland

Breed Characteristics:

Size: Medium to large, large boned

Color: White or pale cream

Ears: Erect

Face: Straight or slightly dished

Lactation:

Average Lbs per Year: 970-5630

Butterfat: 3.4%



Sable

Sable goats are derived from the Saanen breed which originated in Switzerland. They may be any color or combination of colors except white or light cream. Sables are the result of the interaction of recessive genes from the sire and from the dam. If the offspring has a dominant gene for white color, the animal is white and is a Saanen and not a Sable.

Origin: Switzerland

Breed Characteristics:

Size: Medium to large, large boned

Color: any color or combination of colors except white or light cream.

Ears: Erect

Face: Straight or slightly dished

Lactation:

Average Lbs per Year: 970-5,360

Butterfat: 3.4%



Toggenburg

The Toggenburg is a Swiss dairy goat from Toggenburg Valley of Switzerland at Obertoggenburg. They are credited as being the oldest known dairy goat breed. This breed is medium size, sturdy, vigorous, and alert in appearance. They are slightly smaller than the other Alpine breeds.

Origin: Switzerland

Breed Characteristics:

Size: Medium, large boned. Does weigh at least 120 lbs

Color: Its color is solid, varying from light fawn to dark chocolate with no preference or a shade. The Toggenburg has distinct white markings. White ears with a dark spot in the middle. Two white stripes down the face from above each eye to the muzzle. Hind legs with white from hocks to hooves. Forelegs with white from knees downward, and white triangles on either side of the tail.

Ears: Erect

Face: Straight or slightly dished (never Roman)

Lactation:

Average Lbs per Year: 860-4,480

Butterfat: 3.2%