

# Welcome!

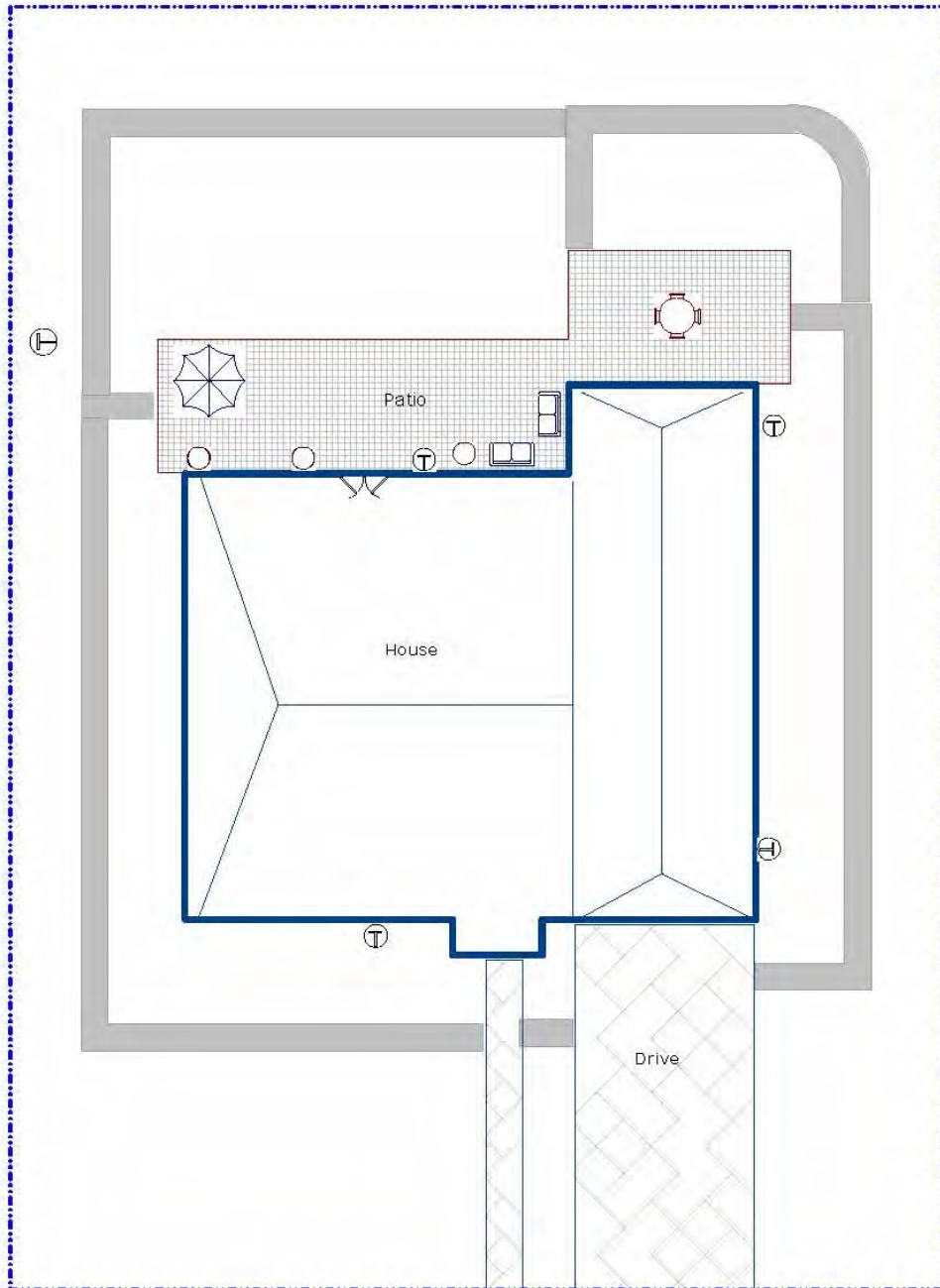


To The First Ever

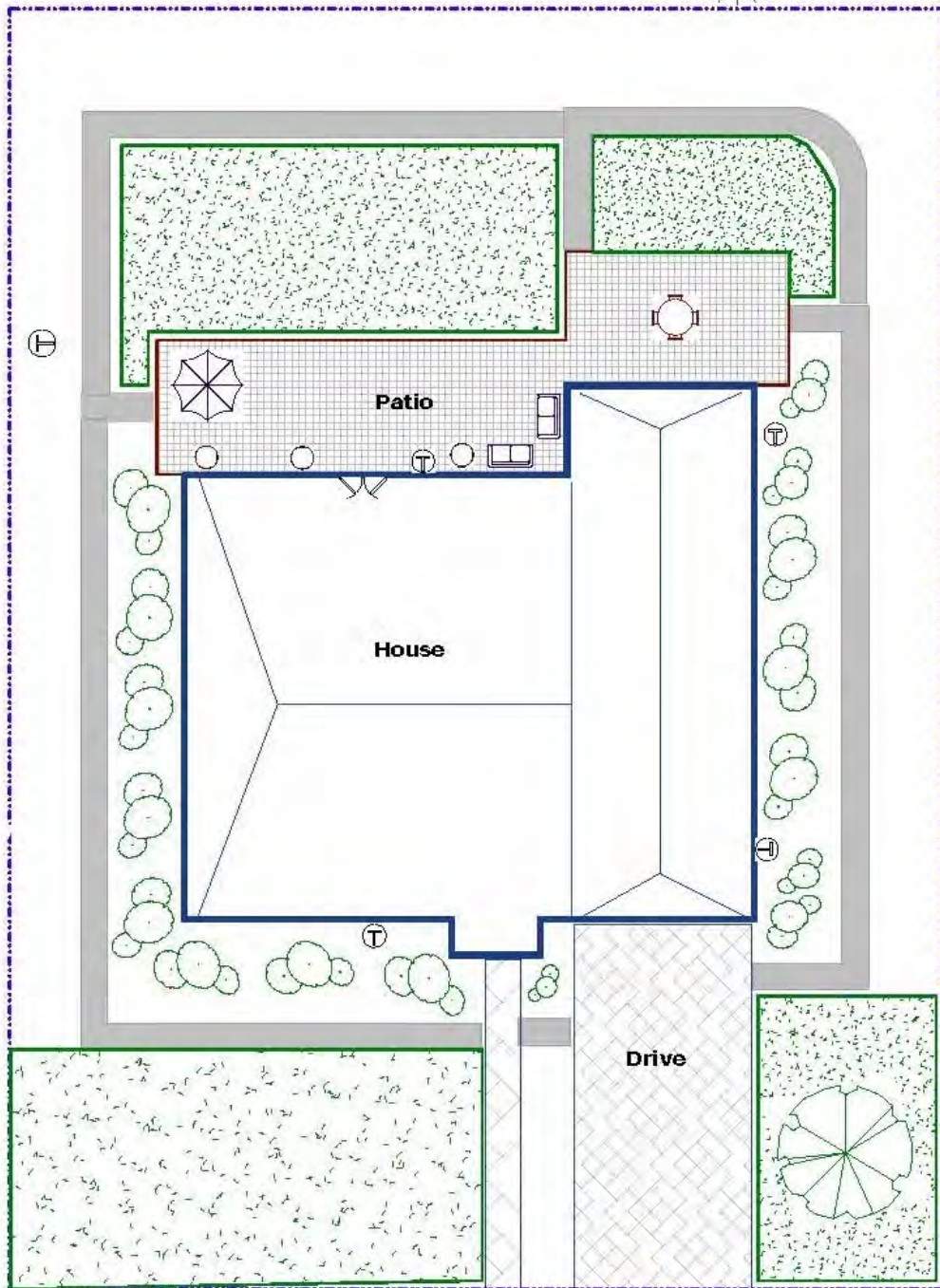
# Landscape Design and Irrigation

Public Workshop

# Existing Hardscape



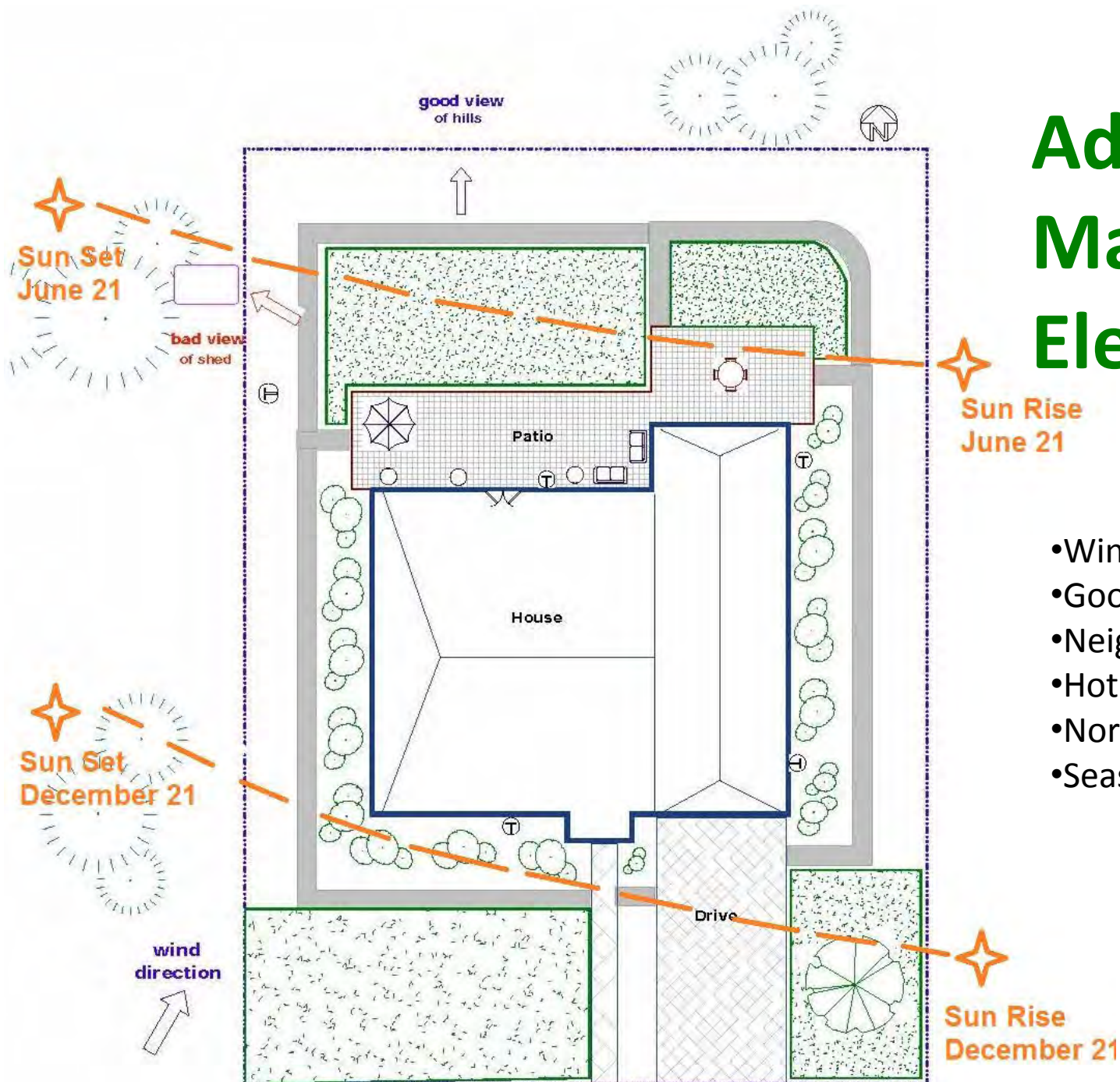
- Property lines
- House, shed footprints
- Existing hardscape
- Water sources



# Add Existing Vegetation

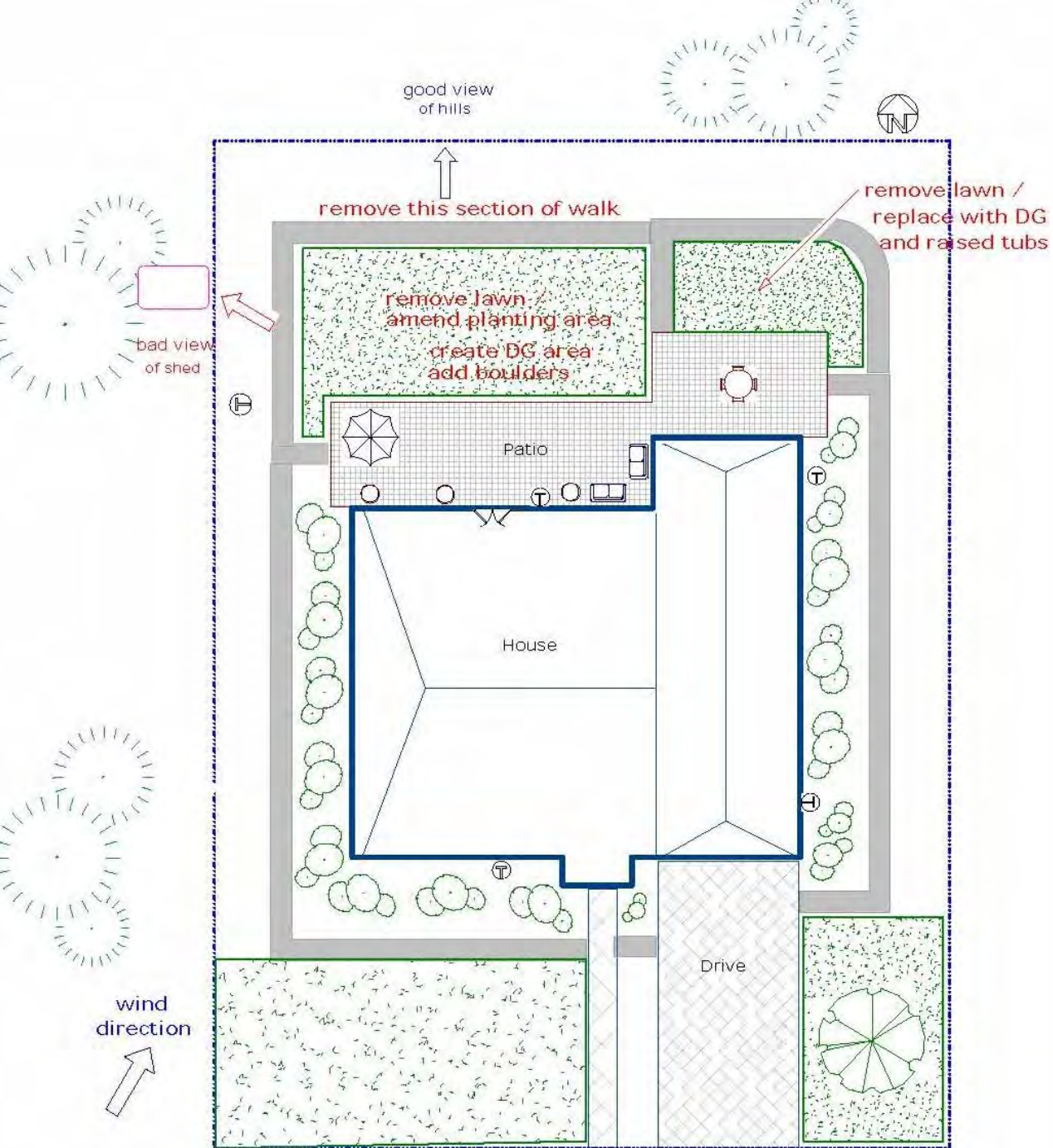
- Existing Landscape





# Add Other Major Elements

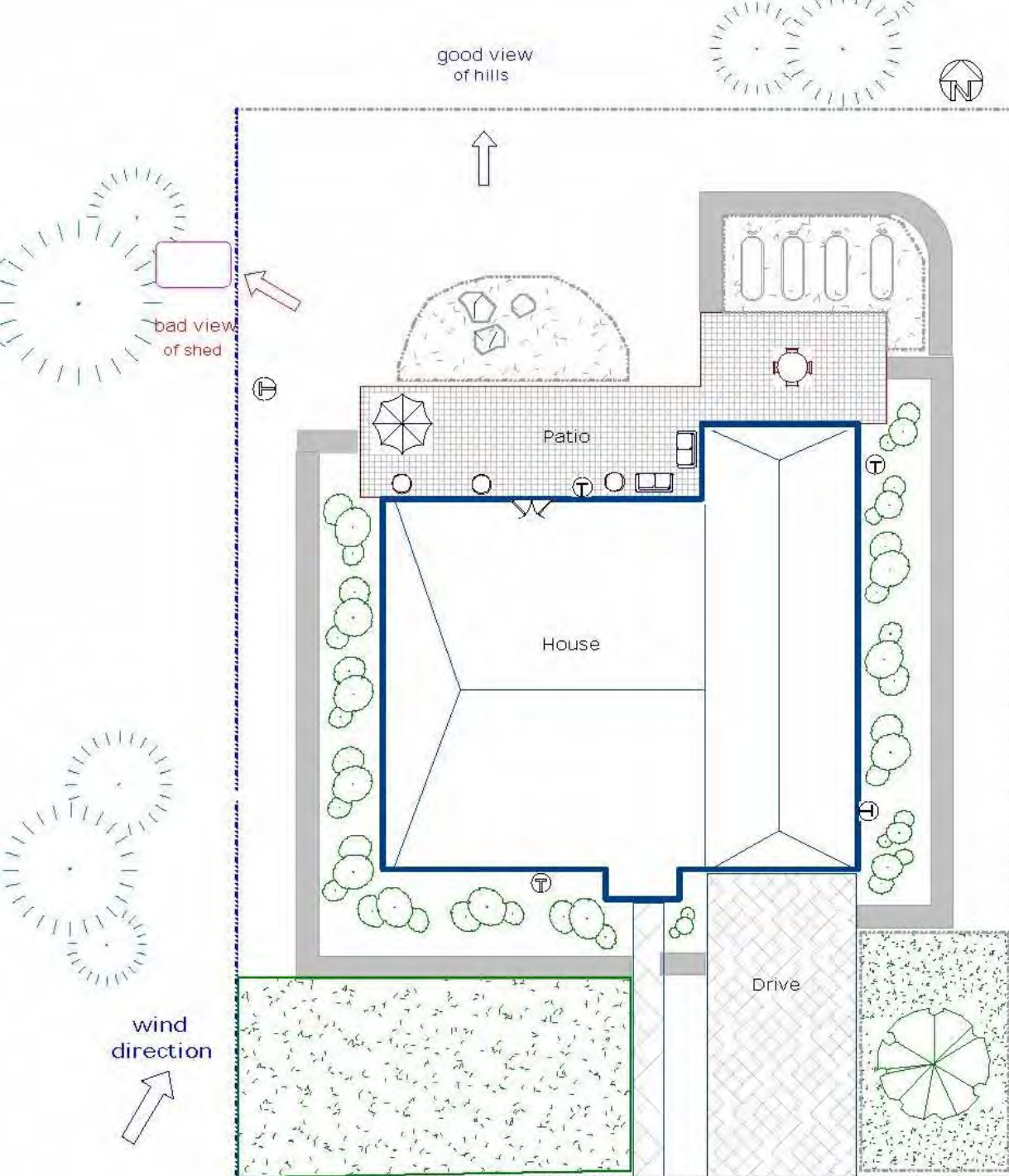
- Wind Direction
- Good / Bad View
- Neighboring tall trees
- Hot / Cold Areas
- North Arrow
- Seasonal Sun Path



# Wanted Changes

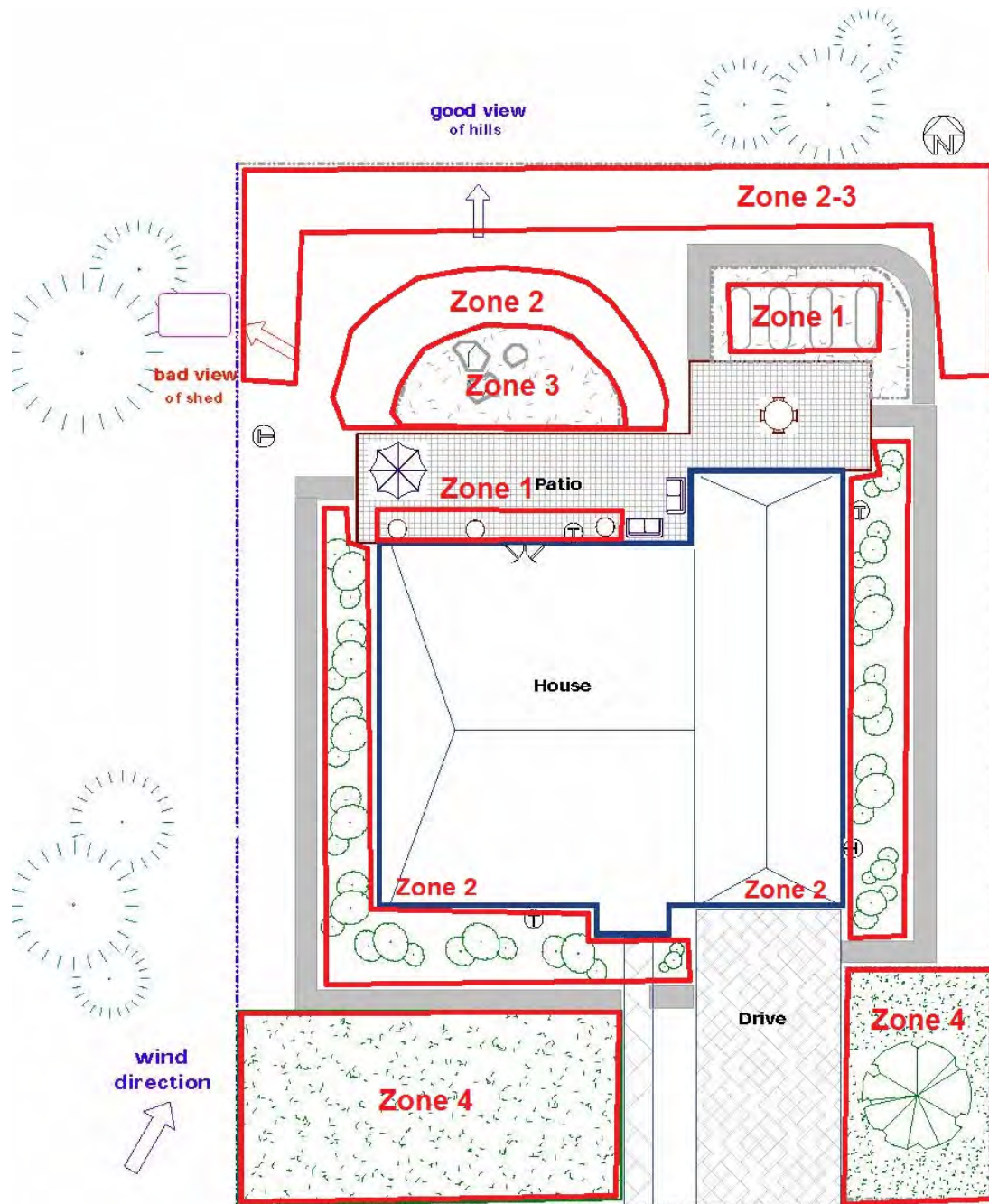
- Demolition Items
- New Elements
- Soil Prep Areas





# Changes Made

- DG garden with raised tubs
- DG rock garden and boulders



# Hydrozones

- Zone 1 - Routine Irrigation**  
patio pots, garden tubs
- Zone 2 - Reduced Irrigation**  
trees, low water shrubs
- Zone 3 - Limited Irrigation**  
succulents, native trees
- Zone 4 - No Irrigation**  
lawn to be abandoned







# Crosscheck other lists

## PLANTS THAT ATTRACT BEES

Successful organic gardeners know that bees are among their best helpers, pollinating fruit trees and other crops. Their gardens teem with honeybees (from Europe) because there's a steady supply of nectar and pollen. But native bees can be good pollinators too. The West has thousands of species of bees, from fat yellow-and-black bumblebees to slim ant look-alikes. Encourage all bees. Listed below are plants that attract them. Keep in mind that bees will go for whatever's blooming, even if it's not their favorite. But they are especially attracted to blue, white, and yellow flowers.

Plant a bee garden like the one pictured on page 712, and hang up a bee box with a grid of small holes in front where solitary bees can nest. A healthy garden is buzzing with life.



Borage (*Borago officinalis*) with European honeybee

- Agastache** p. 137  
☼ ☼ ZONES VARY
- Aster × frikartii** p. 176  
☼ ☼ 2B-24
- Asteriscus maritimus** p. 177  
*Gold cobb*  
☼ ☼ 9, 15-24
- Bidens ferulifolia** p. 196  
☼ ☼ ALL ZONES
- Borago officinalis** p. 200  
*Borage*  
☼ ☼ A2, A3; 1-24; H1
- Caryopteris × clandonensis** p. 224  
*Blue mist*  
☼ ☼ 2B-9, 14-24

- Ceanothus** p. 226  
*California wild lilac*  
☼ ☼ 1-3, 5-9, 14-24
- Centaurea** p. 230  
☼ ☼ ZONES VARY
- Cephalophyllum "Red Spike"** p. 231  
*Red spike ice plant*  
☼ ☼ 8, 9, 11-24
- Cerinth major "Purpurascens"** p. 233  
*Honeyswort*  
☼ ☼ 1-24
- Chamaebatiaria millefolium** p. 234  
*Fernbush*  
☼ ☼ 1-3, 7, 14-21

- Choisya ternata** p. 241  
*Mexican orange*  
☼ ☼ 4-9, 14-24
- Citrus** p. 245  
☼ ☼ 8, 9, 12-24; H1, H2
- Clarkia unguiculata** p. 251  
*Mountain garland*  
☼ ☼ A2, A3; 1-24
- Coreopsis grandiflora** p. 260  
☼ ☼ 2-24; H1, H2
- Cosmos bipinnatus** p. 268  
☼ ☼ 1-24
- Echinacea** p. 296  
*Coneflower*  
☼ ☼ A2, A3; 1-24

- Echium candicans** p. 298  
*Pride of Madeira*  
☼ ☼ 14-24
- Eriogonum** p. 306  
*Wild buckwheat*  
☼ ☼ ZONES VARY
- Eryngium** p. 307  
*Sea holly*  
☼ ☼ 2-24
- Eschscholzia californica** p. 310  
*California poppy*  
☼ ☼ 1-24; H1
- Frangula californica** p. 326  
*Coffeeberry*  
☼ ☼ 3A-10, 14-24; H1, H2



*Agastache foeniculum*



*Ceanothus 'Cynthia Roston'*



*Cerinth major 'Purpurascens'*



*Choisya ternata*

- Gilia** p. 339  
☼ ☼ 1-24
- Helianthus annuus** p. 355  
*Common sunflower*  
☼ ☼ ALL ZONES
- Hyssopus officinalis** p. 370  
*Hyssop*  
☼ ☼ 1-24
- Lavandula** p. 401  
*Lavender*  
☼ ☼ ZONES VARY
- Ligustrum** p. 411  
*Privet*  
☼ ☼ ZONES VARY
- Lobularia** p. 419  
*Sweet abyssum*  
☼ ☼ ALL ZONES
- Malephora** p. 432  
*Ice plant*  
☼ ☼ ZONES VARY
- Mentha spicata** p. 442  
*Spearmint*  
☼ ☼ A2, A3; 1-24
- Monarda villosa** p. 445  
*Coyote mint*  
☼ ☼ 7-9, 14-24
- Murraya paniculata** p. 447  
*Orange Jessamine*  
☼ ☼ 21-24; H1, H2
- Nepeta** p. 454  
☼ ☼ 1-24
- Origanum** p. 463  
*Oregano*  
☼ ☼ ZONES VARY
- Oscularia deltoides** p. 466  
*Ice plant*  
☼ ☼ 14-24
- Penstemon heterophyllus** p. 491  
*Footfall penstemon*  
☼ ☼ 7-24
- Perovskia atriplicifolia** p. 494  
*Russian sage*  
☼ ☼ 2-24
- Phacelia** p. 497  
☼ ☼ 1-3, 7-24

- Purshia mexicana** p. 542  
*Cliffrose*  
☼ ☼ 2-3, 6-12, 14-21
- Rosmarinus officinalis** p. 578  
*Rosemary*  
☼ ☼ 4-24; H1, H2
- Rudbeckia hirta** p. 580  
*Gloriosa daisy*  
☼ ☼ 1-24
- Salvia** p. 583  
*Sage*  
☼ ☼ ZONES VARY
- Sedum** p. 597  
*Stonecrop*  
☼ ☼ ZONES VARY
- Stachys byzantina** p. 612  
*Lamb's ears*  
☼ ☼ 1-24
- Thymus (many)** p. 629  
*Thyme*  
☼ ☼ 1-24

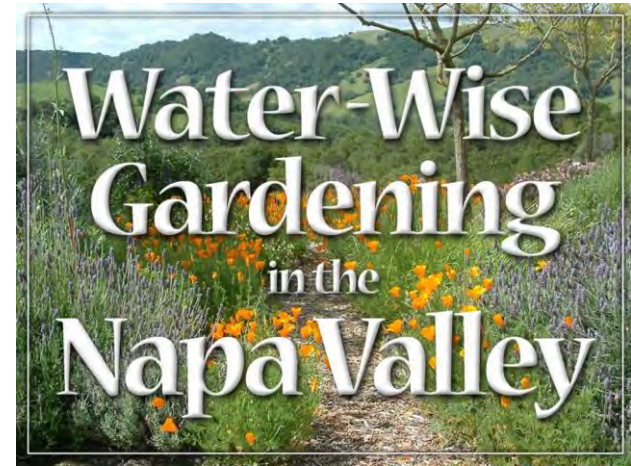


TOP ROW: *Coreopsis grandiflora*, *Cosmos bipinnatus*. SECOND ROW: *Echinacea purpurea* 'Doubledecker', *Echium candicans*. THIRD ROW: *Calliandra × grandiflora* 'Fanfare', *Lobularia maritima*. BOTTOM ROW: *Nepeta* 'Walker's Low', *Rosmarinus officinalis* 'Purpureus', *Rudbeckia hirta* 'Denver Daisy'

# Other Great Online Resources



CA Native Plant Society



City of Napa Water Department

UC Davis



## Arboretum All-Stars

The horticultural staff of the UC Davis Arboretum have identified 100 tough, reliable plants that have been tested in the Arboretum, are easy to grow, don't need a lot of water, have few problems with pests or diseases, and have outstanding qualities in the garden. Many of them are California native plants and support native birds and insects. Most All-Star plants can be successfully planted and grown throughout California.

### Learn about Arboretum All-Stars

- Use the [All-Stars database](#) to find the right plants for your garden
- Download the [All-Stars brochure](#).
- Use the [All-Stars planting plan](#) from the landscape outside the west fence of the Arboretum Teaching Nursery as an inspiration for your home garden
- Browse through a [list](#) of the 100 UC Davis Arboretum All-Stars
- Watch an [audio slide show](#) about the All-Stars plants
- Learn about [All-Stars irrigation and climate zone trials](#)

### See Arboretum All-Stars in the gardens

Look for beautiful, brightly-colored signs identifying the All-Stars at the UC Davis Arboretum, each with a photo of the plant in bloom, a list of its outstanding features, and information about how to grow it. Also look for metal plant labels with the All-Stars logo.



NAPA COUNTY  
RCD



Napa County

WUCOLS IV

Water Use Classification of Landscape Species

Ca Depart of Water Resources / UCCE

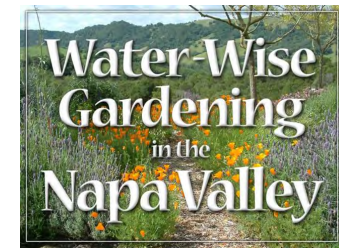


UC  
MASTER  
GARDENERS  
NAPA COUNTY

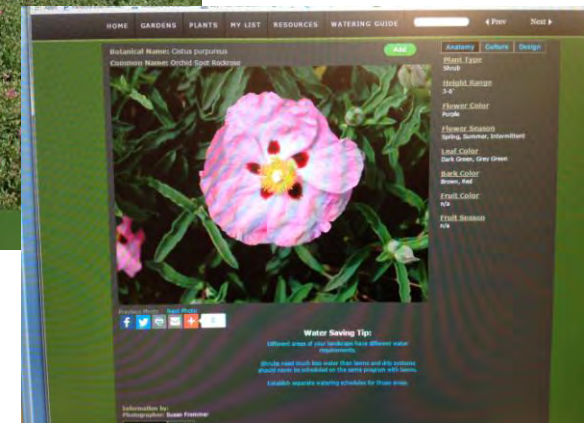
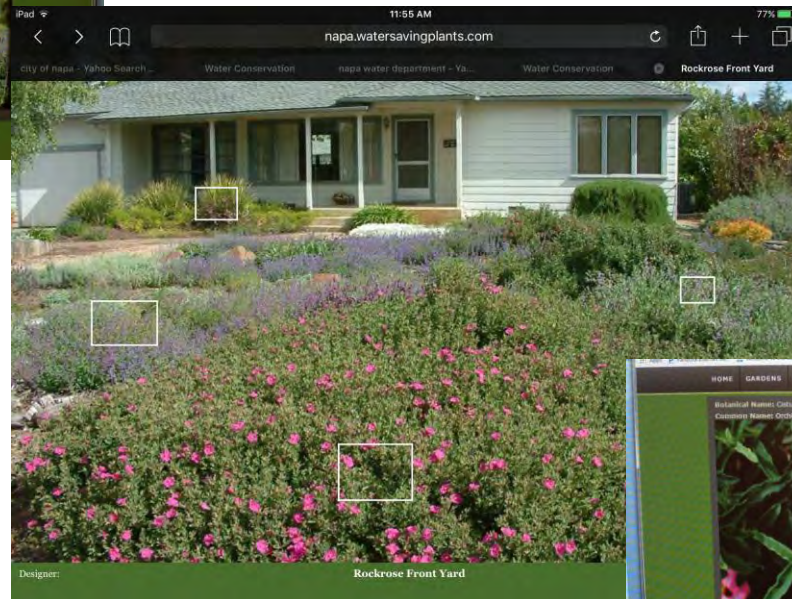
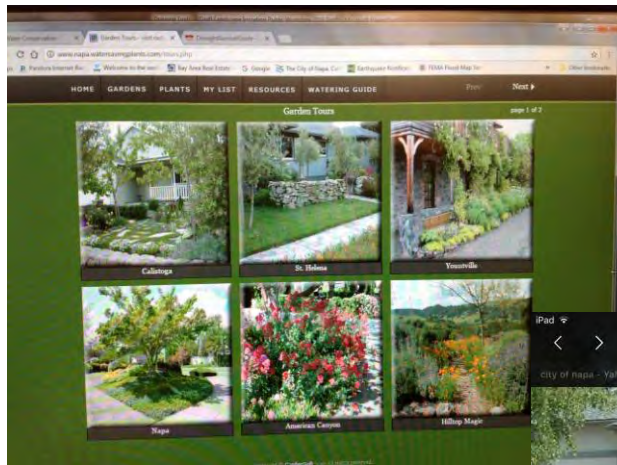
Garden Resources



# Online Tours



City of Napa Water Department





# Native trees



Ca Wild Lilac



Ca Red Bud

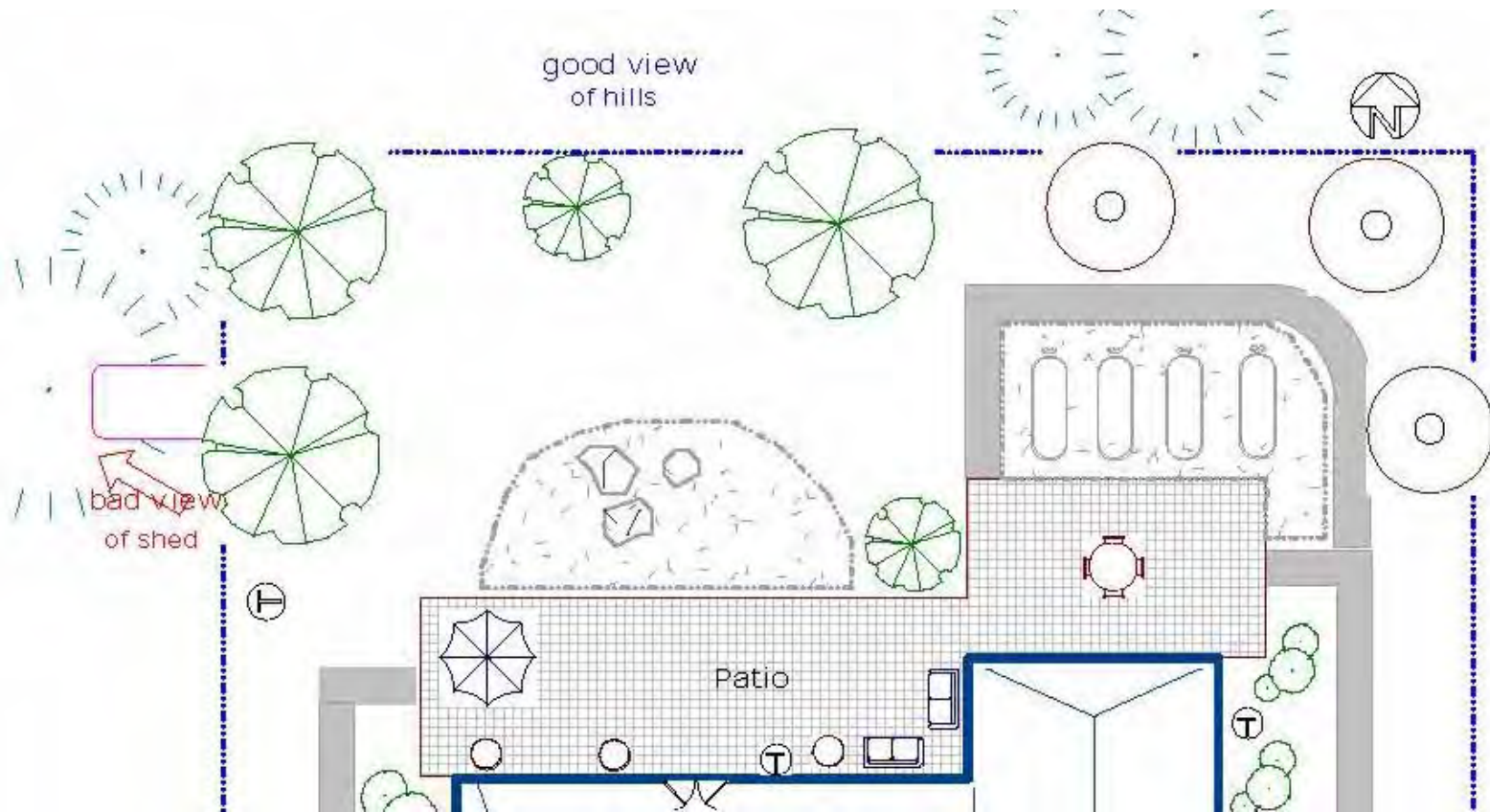


Ca Western Dogwood



Catalpa Willow





# Add Trees



<u>Common Name</u>	<u>Botanical Name</u>	<u>Size</u>	<u>Qty</u>
Ray Hartman Wild Lilac	Ceanothus 'Ray Hartman	15 gal	3
Western Redbud	Cercis occidentalis	10 gal	2
Dwarf Meyer Lemon	Citrus limon x myeri	10 gal	3

# Tulip Tree



*Magnolia x soulangeana*



*Liriodendron tulipifera*



# Ceanothus...



*tree*



*bush*



*color*



*groundcover*



*deer resistant sp*



# Native tall shrubs



Christmas Berry



Pink Flowering Currant



Manzanita



Sage



Bush Anemone



# Native short shrubs



Ca Fuchsia



Buckwheat



Penstemon



Hummingbird  
Sage



Yarrow



Woolly Blue Curls



Monkey Flower

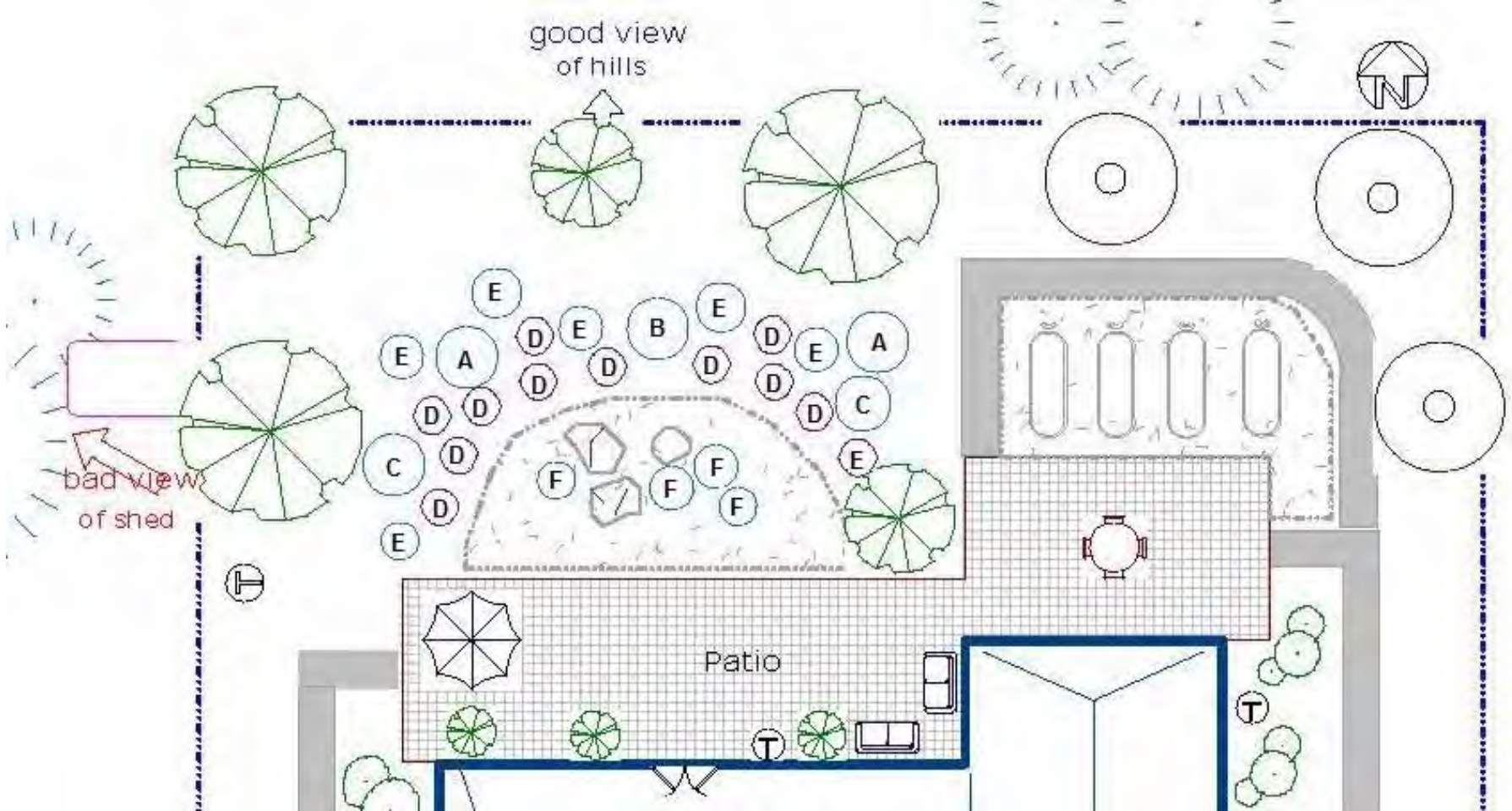


Manzanita



# Native rock garden plants

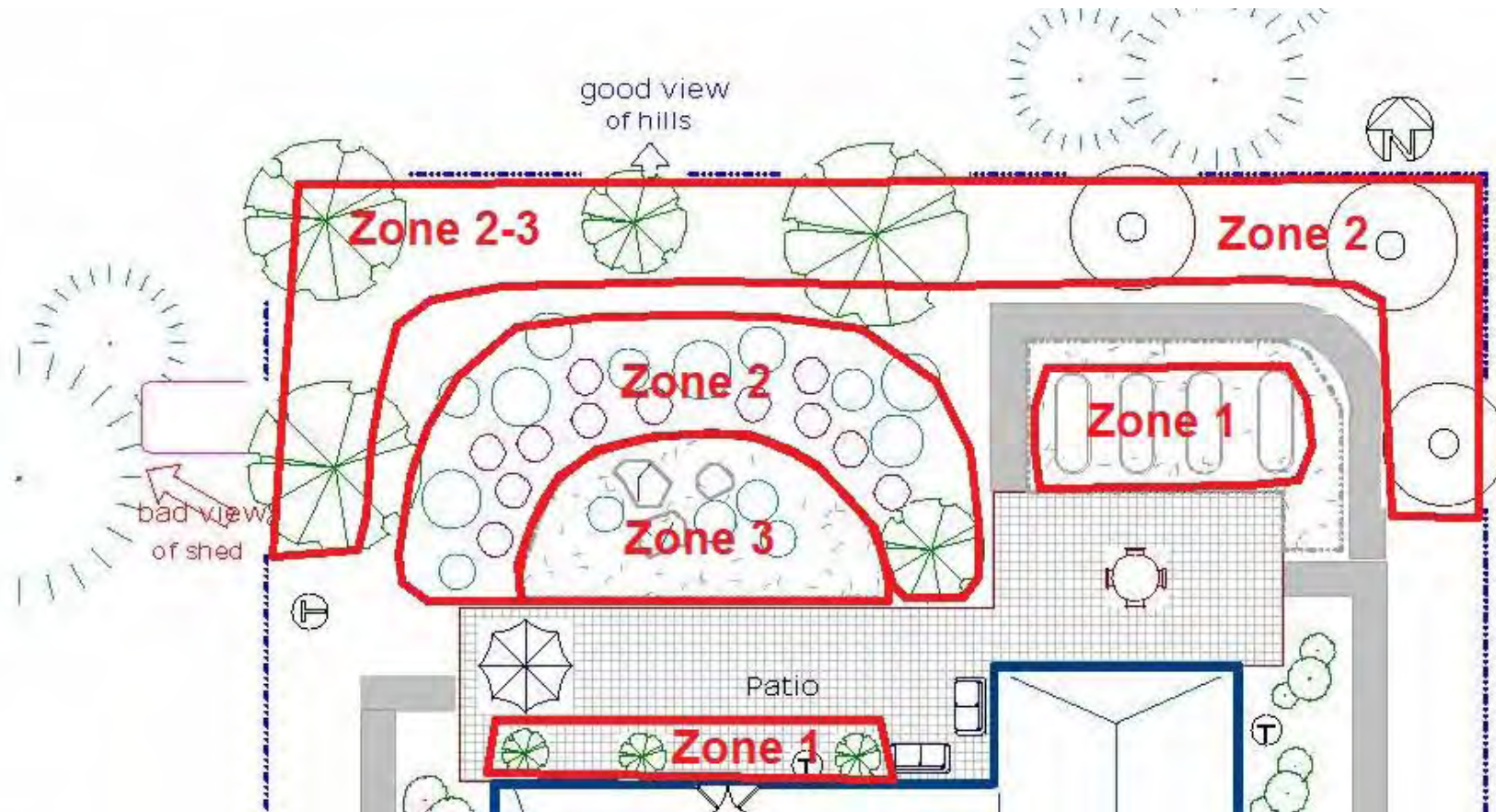




## Add Shrubs

	Common Name	Botanical Name	Size	Qty
A	Vine Hill Manzanita	<i>Arctostaphylos densiflora</i>	5 gal	2
B	California Blue sage	<i>Salvia clevelandii</i>	5 gal	1
C	Hummingbird sage	<i>Salvia spathacea</i>	1 gal	2
D	Foothill Penstemon	<i>Penstemon hetrophyllus</i>	1 gal	11
E	Monkey Flower	<i>Diplacus grandiflorus</i>	1 gal	7
F	Succulents	<i>Dudleya brittonii</i>	1 gal	4





# Hydrozones

- Zone 1 - Routine Irrigation**  
patio pots, garden tubs
- Zone 2 - Reduced Irrigation**  
trees, low water shrubs
- Zone 3 - Limited Irrigation**  
succulents, native trees
- Zone 4 - No Irrigation**  
front lawn to be abandoned

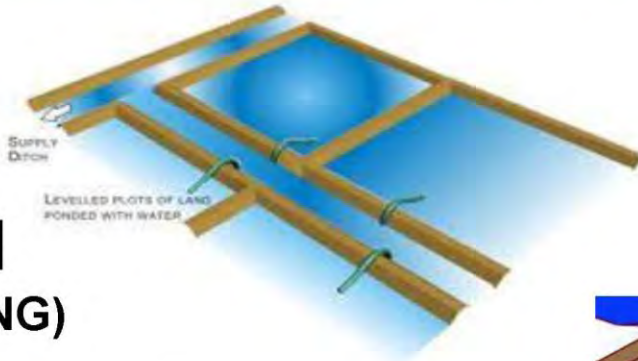
# SIMPLE GARDEN RE-DO



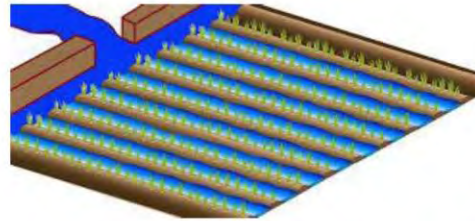
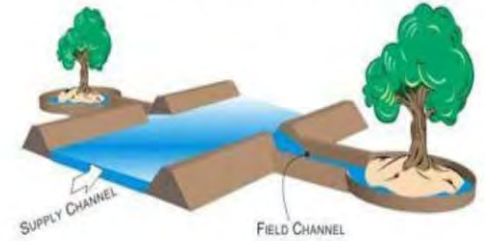


# SURFACE IRRIGATION

**BASIN  
(FLOODING)**



**BORDER**



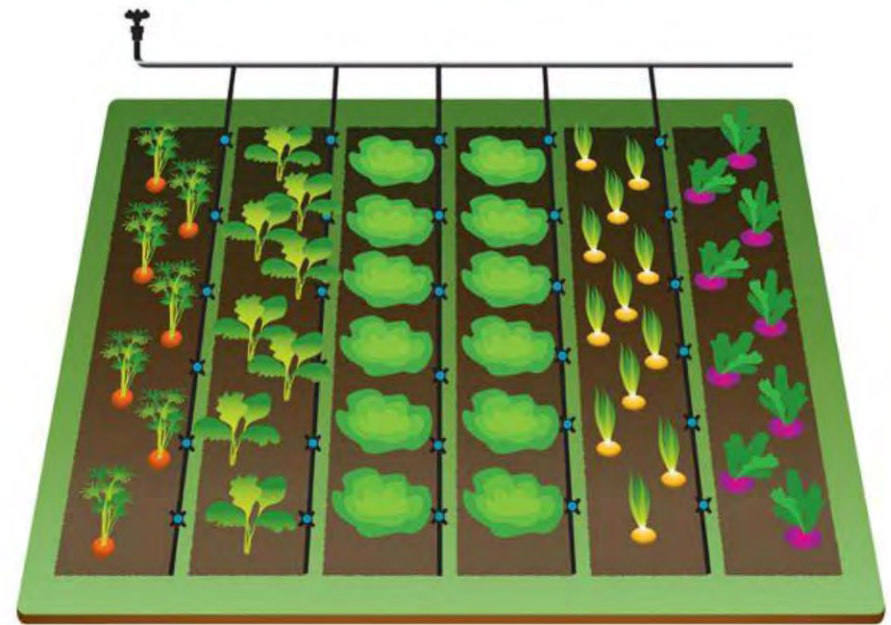
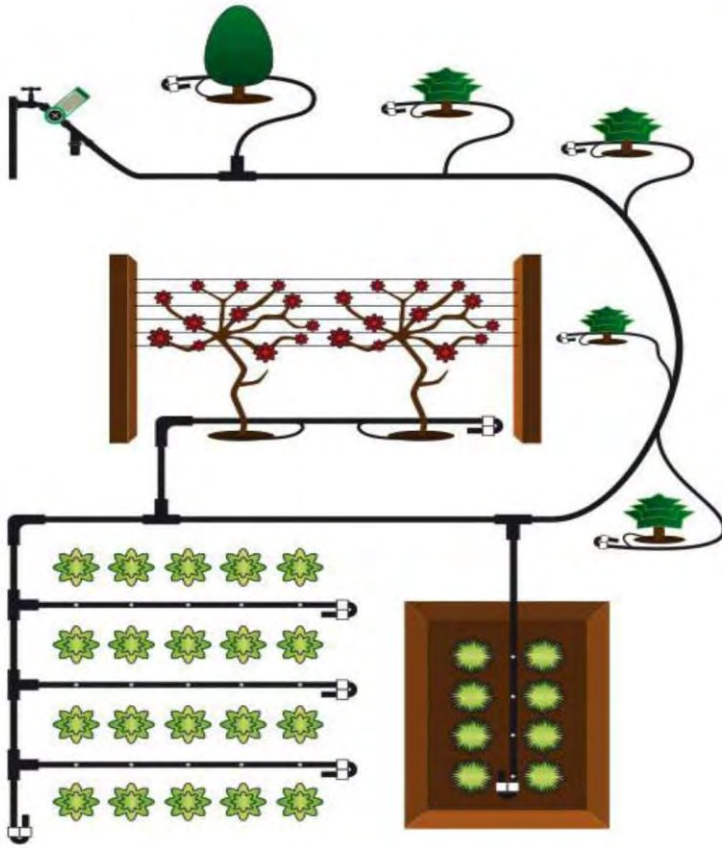
**FURROW**



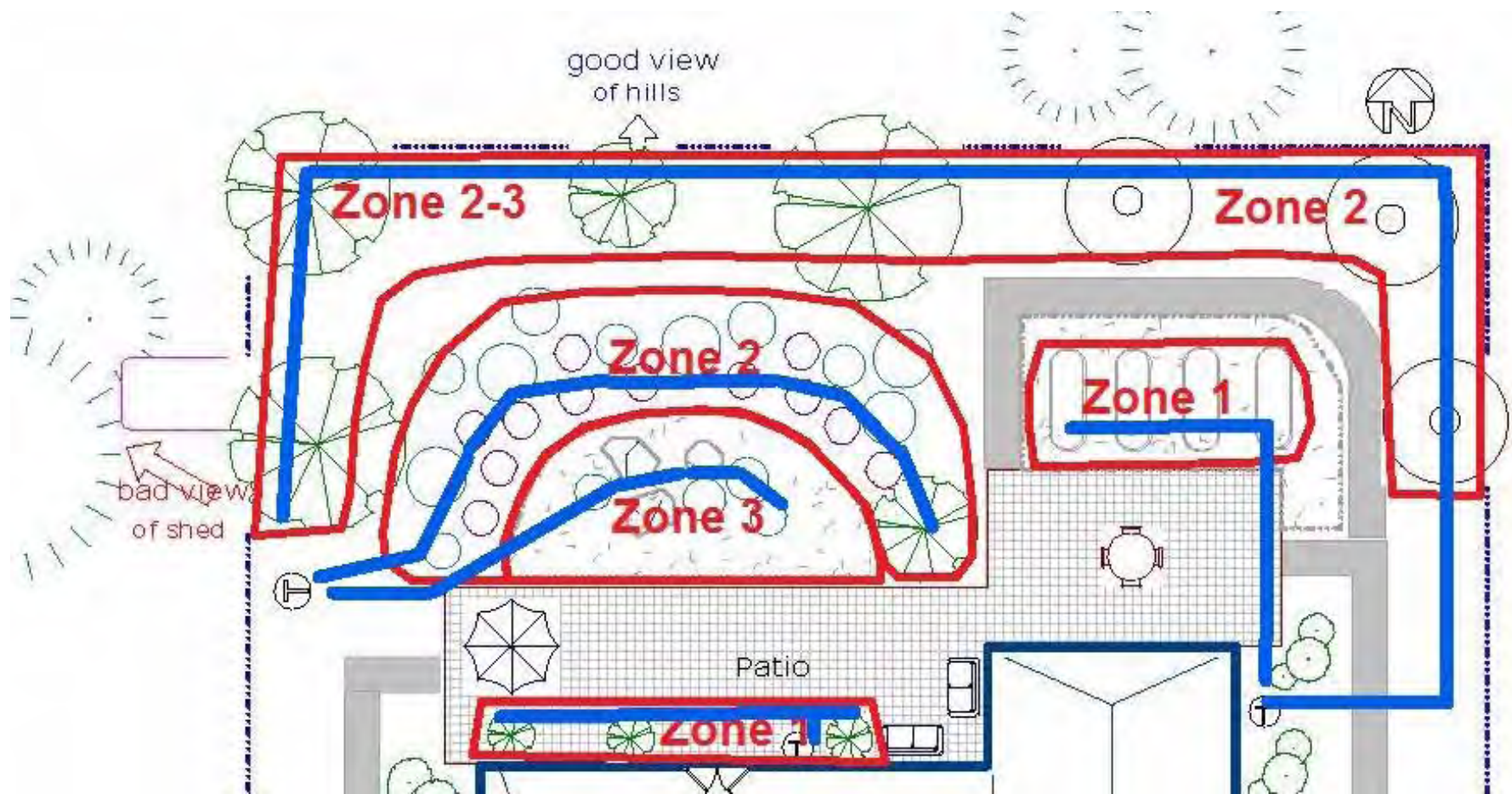
**SPRINKLER**



# DRIP IRRIGATION IS THE WAY TO GO







# Irrigation Plan

- Zone 1 - Routine Irrigation**  
patio pots, garden tubs
- Zone 2 - Reduced Irrigation**  
low water shrubs
- Zone 3 - Limited Irrigation**  
succulents, native trees

# Thread Abbreviations



**FPT** - Female **Pipe** Thread

**MPT** – Male **Pipe** Thread

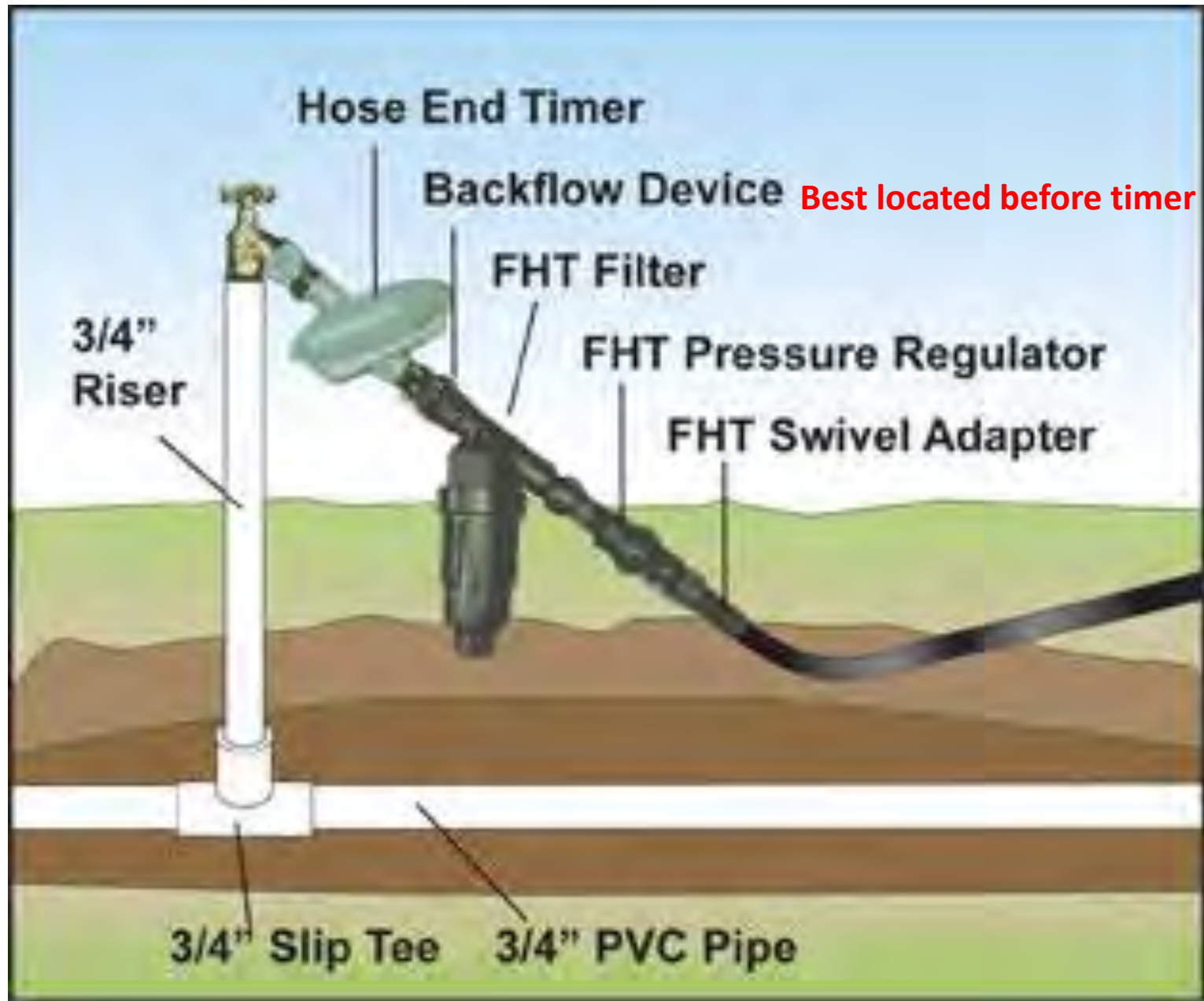
**FHT** – Female **Hose** Thread

**MHT** – Male **Hose** Thread

Example:

$\frac{3}{4}$ " FPT x  $\frac{3}{4}$ " FHT =  $\frac{3}{4}$  inch female **pipe** thread by  $\frac{3}{4}$  inch female **hose** thread



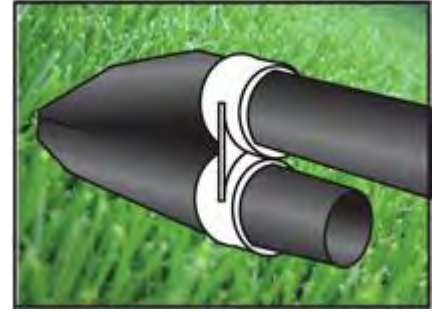
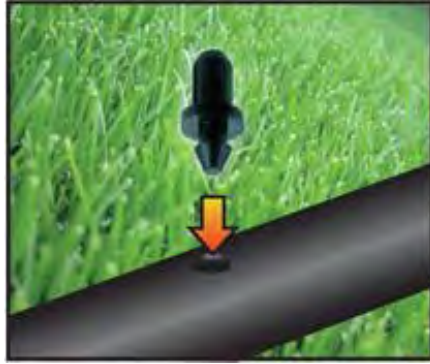
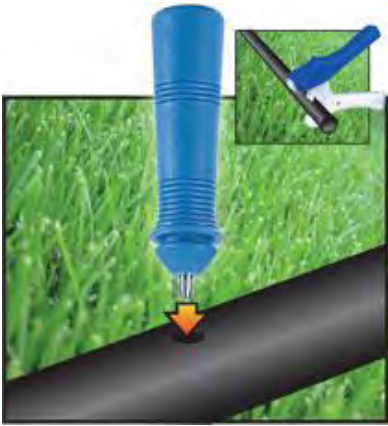


**Head Assembly**

# WATTS 8A Vacuum Breaker







# Questions?

Thank you!

