

Tree Mortality Task Force Bioenergy Working Group

2017 Western SWET Forum

Fresno, CA | September 14, 2017

Angie Lottes





COPYRIGHT 1900 BY
H. S. PEABODY, BOSTON



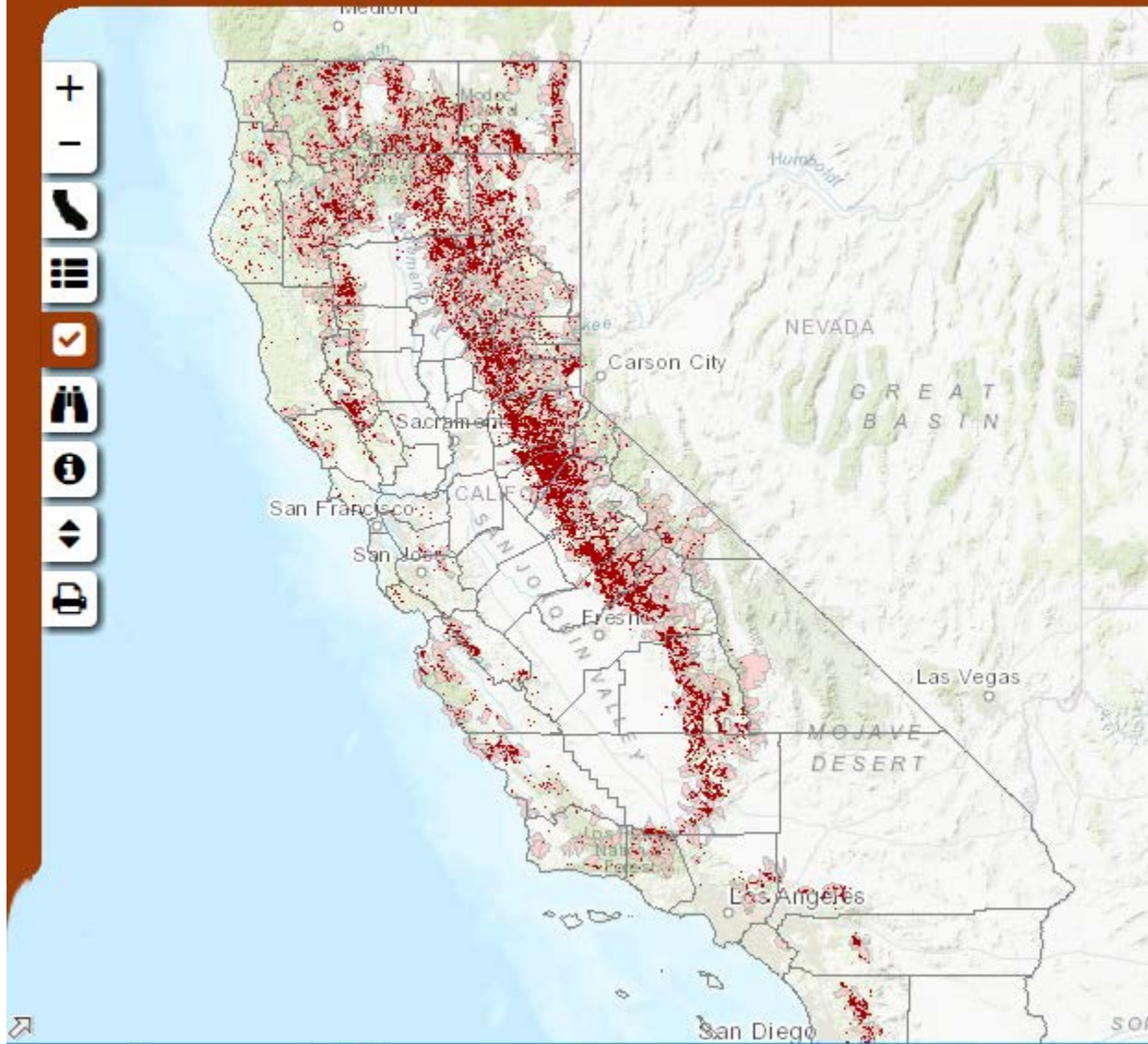




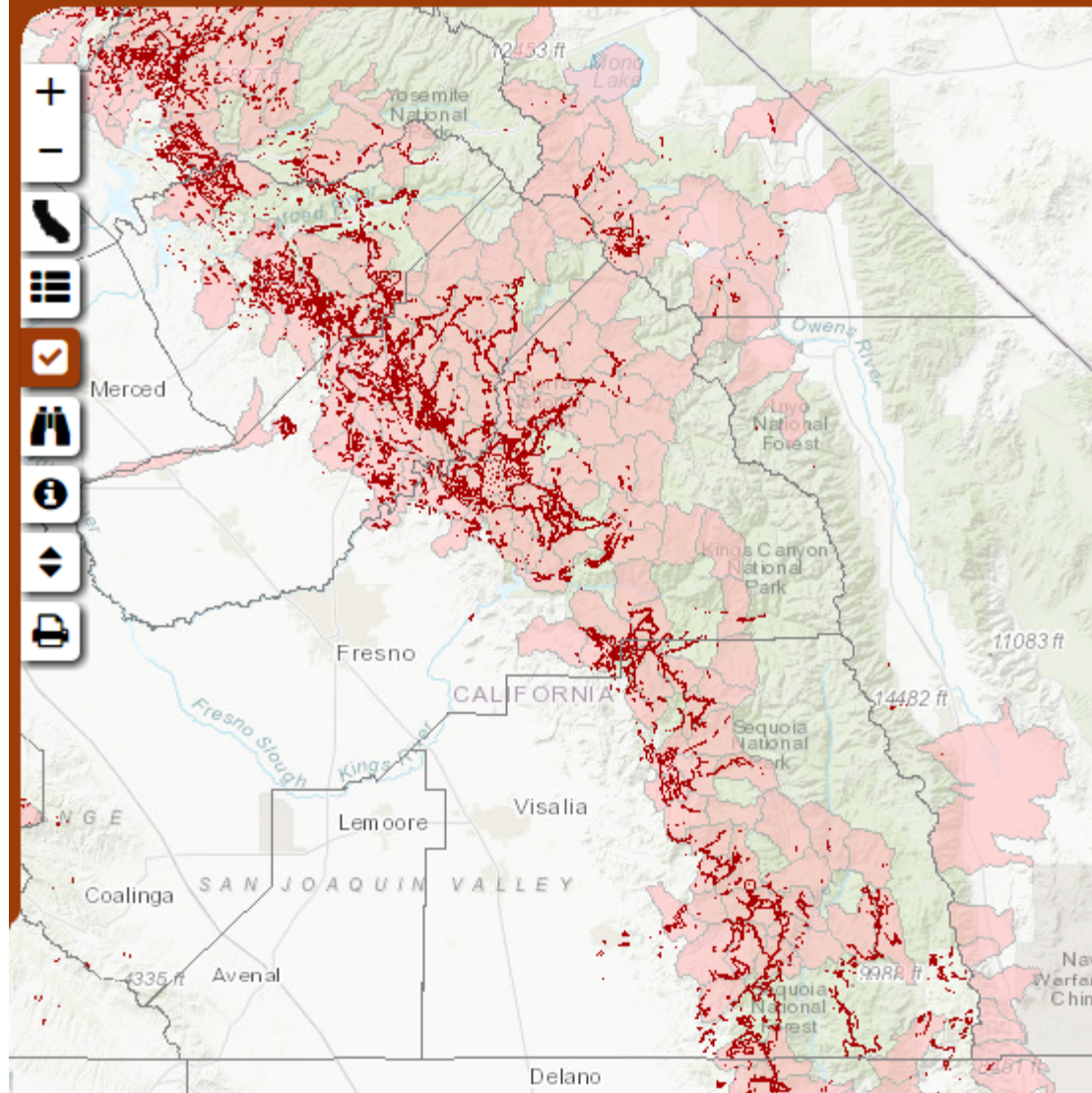
TMTF Bioenergy Working Group

- Mandate: Use high hazard zone material

Tree Mortality Viewer

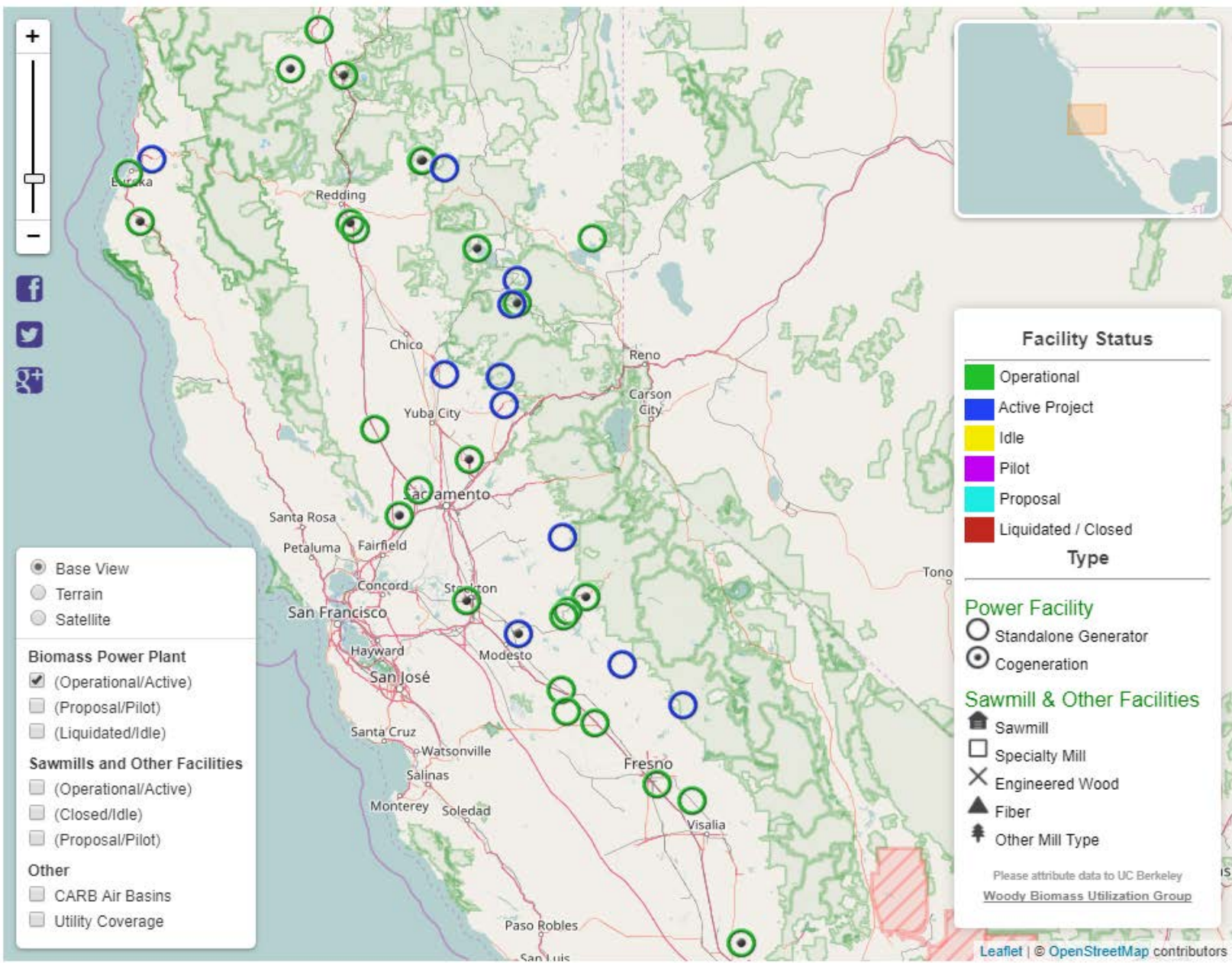


Tree Mortality Viewer



TMTF Bioenergy Working Group

- Mandate: Use high hazard zone material
- Order: Extend contracts and hold new Renewable Auction Mechanism



Map navigation controls including a zoom-in (+) and zoom-out (-) button, and a vertical scale bar.

Social media sharing icons for Facebook, Twitter, and Google+.

Map Legend

- Base View
- Terrain
- Satellite

Biomass Power Plant

- (Operational/Active)
- (Proposal/Pilot)
- (Liquidated/Idle)

Sawmills and Other Facilities

- (Operational/Active)
- (Closed/Idle)
- (Proposal/Pilot)

Other

- CARB Air Basins
- Utility Coverage



Facility Status

- Operational
- Active Project
- Idle
- Pilot
- Proposal
- Liquidated / Closed

Type

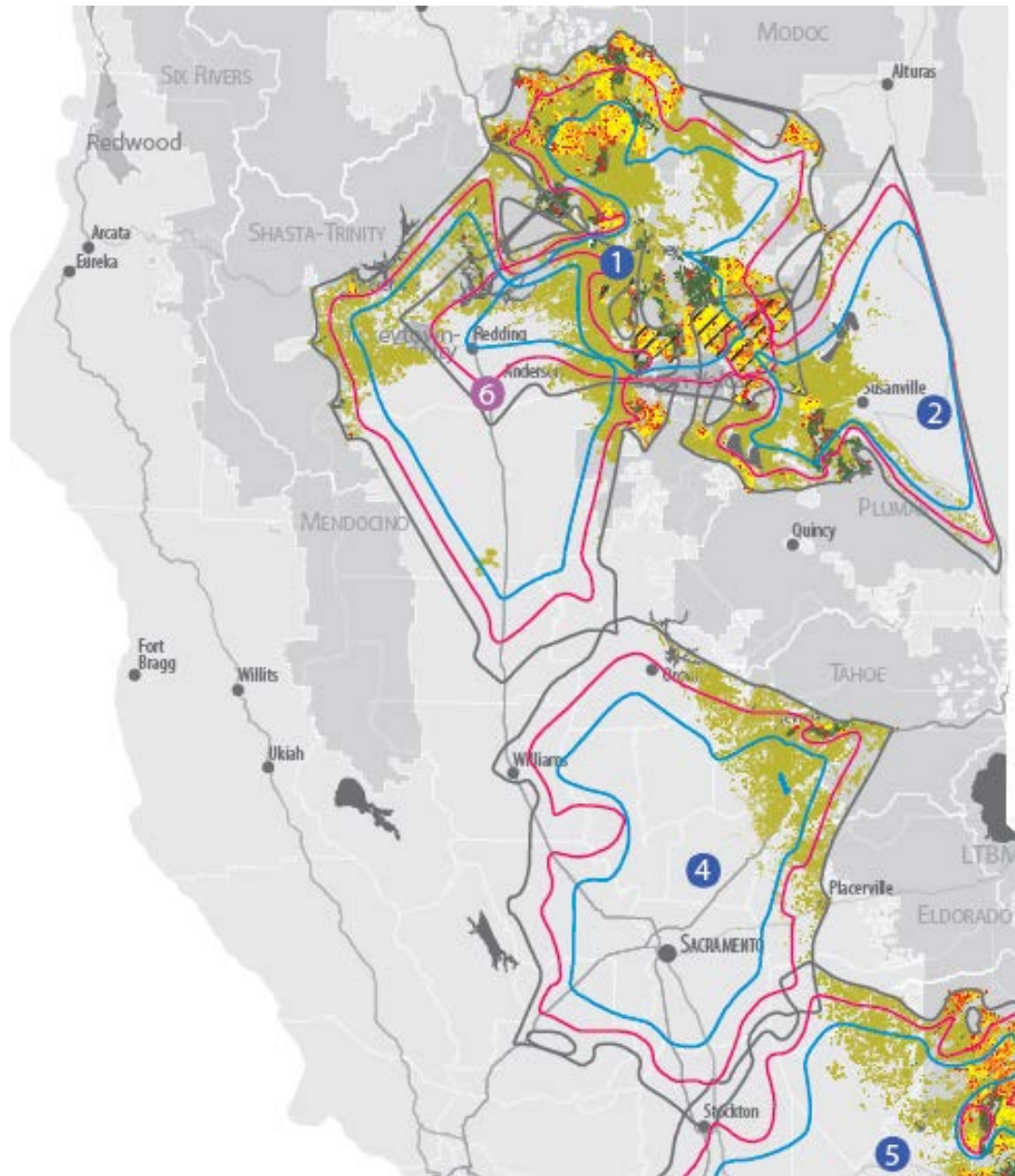
Power Facility

- Standalone Generator
- ⊙ Cogeneration

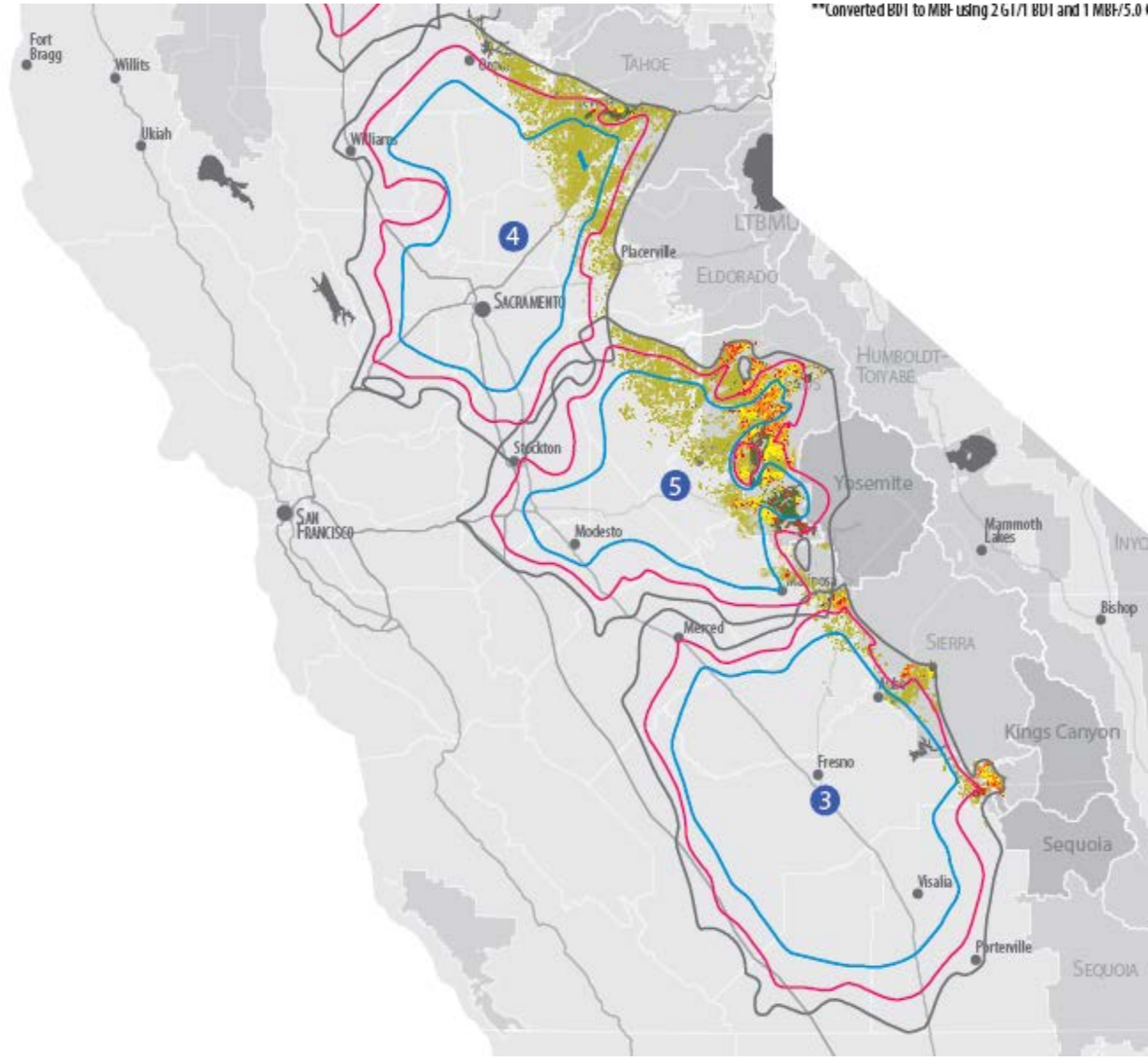
Sawmill & Other Facilities

- 🏠 Sawmill
- Specialty Mill
- ✕ Engineered Wood
- ▲ Fiber
- 🌲 Other Mill Type

Please attribute data to UC Berkeley
[Woody Biomass Utilization Group](#)



**Converted BDI to MBF using 2.61/1 BDI and 1 MBF/5.01



Effect of BioRAM on Landscape

	2017	2018	2019	2020	2021	Total Forest BDT, 5 Yr Contract Period
BioRAM 1 Facilities						
Burney Forest Power	108,800	130,560	174,080	174,080	174,080	761,600
Greenleaf Honey Lake	87,500	105,000	140,000	140,000	140,000	612,500
Rio Bravo Fresno	109,200	131,040	174,720	174,720	174,720	764,400
Rio Bravo Rocklin	109,200	131,040	174,720	174,720	174,720	764,400
Pacific Ultrapower Chinese Station	77,400	92,880	123,840	123,840	123,840	541,800
HHZ minimum requirements	50%	60%	80%	80%	80%	
BioRAM 2 Facility						
Wheelabrator	190,640	190,640	190,640	190,640	190,640	953,200
HHZ minimum requirements	80%	80%	80%	80%	80%	
Total BDT/Yr, BioRAM 1 and 2 Contracts	682,740	781,160	978,000	978,000	978,000	4,397,900
Total Est Treated Ac @ 12.5 BDT biomass/ac	54,619	62,493	78,240	78,240	78,240	351,832

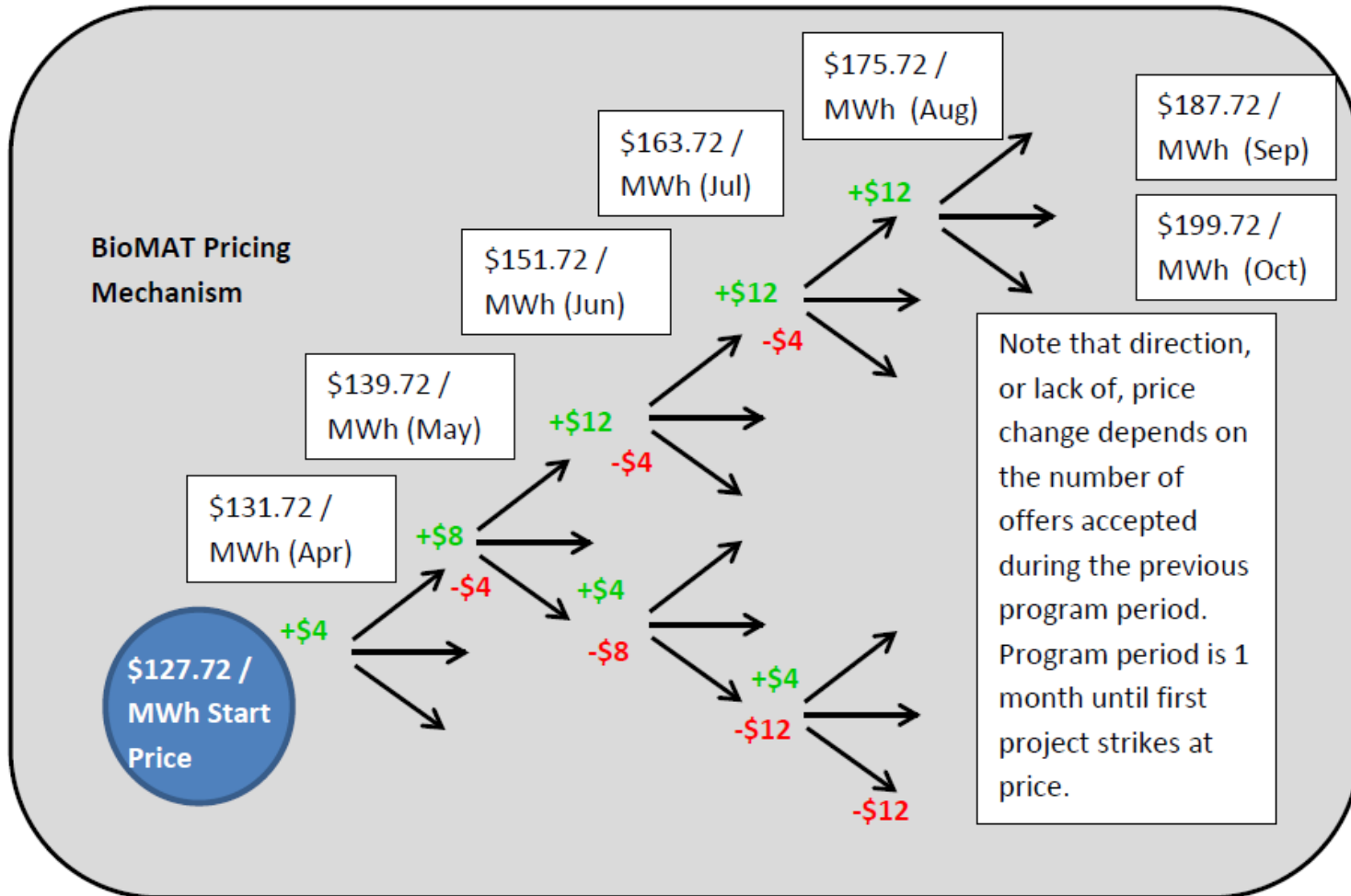
TMTF Bioenergy Working Group

- Mandate: Use high hazard zone material
- Order: Extend contracts and hold new Renewable Auction Mechanism
- Orders: Ensure that the BioMAT works and prioritize interconnection agreements

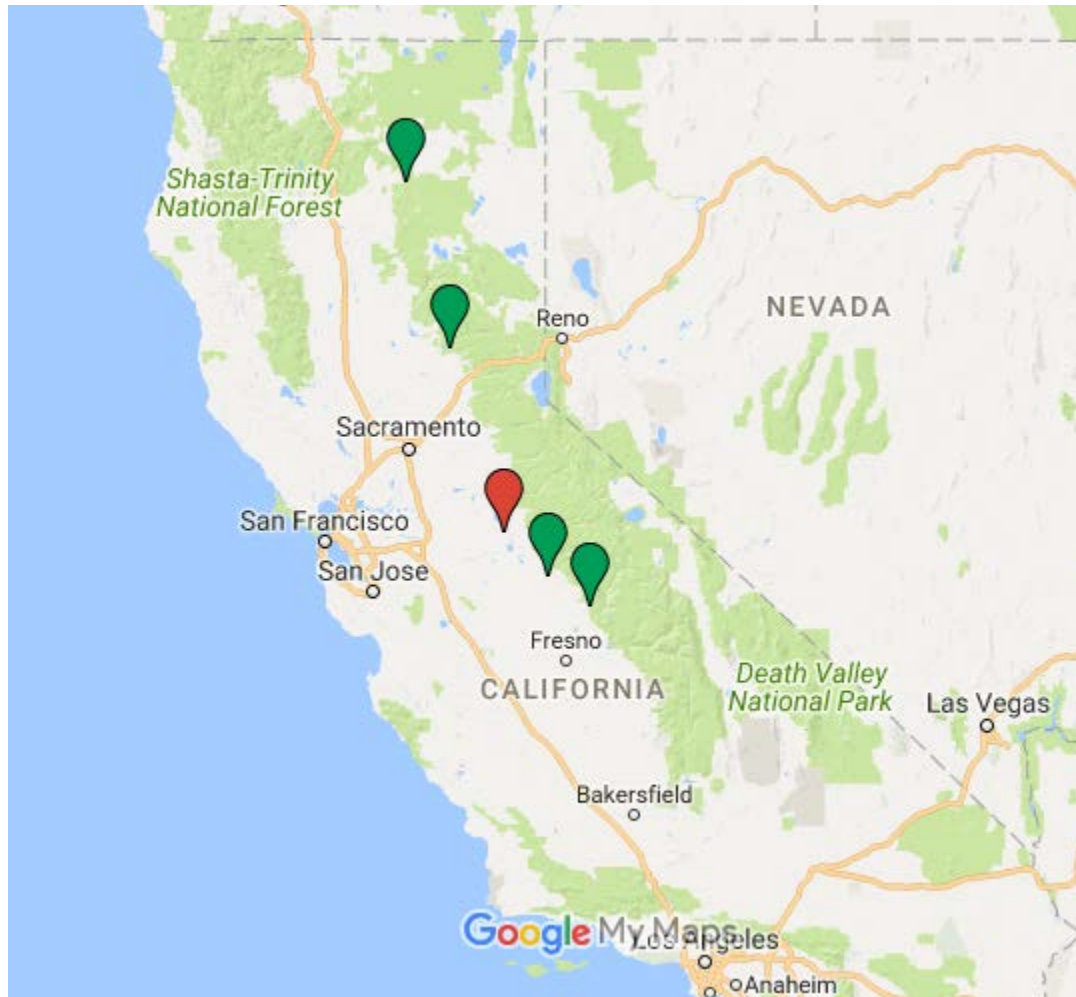
BioMAT / SB1122

- 250 MW total capacity, 50 MW “category 3”
- <5 MW power generation, <3 MW to grid
- Waste fuel requirement:
 - Fire threat reduction
 - Fire safe clearance activities
 - Infrastructure clearance projects
 - Other sustainable forest management
- Pricing Mechanism

BioMAT Price Mechanism



BioMAT Projects with Funds for Construction



TMTF Bioenergy Working Group

- Mandate: Use high hazard zone material
- Order: Extend contracts and hold new Renewable Auction Mechanism
- Orders: Ensure that the BioMAT works and prioritize interconnection agreements
- Orders: Identify wood storage location and investigate possible funding sources for subsidizing the cost of fuel hauling

Temporary Wood Processing & Storage Locations

These 14 sites are locations where wood debris and materials from High Priority Counties are temporarily processed or stored after being removed from High Hazard Zones.

Open to the Public

- 9 Mariposa County Landfill
- 13 Dinkey Creek Road
- 14 Witten Logging

Open to the Public with Restrictions on Material Type

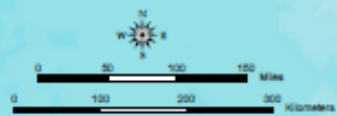
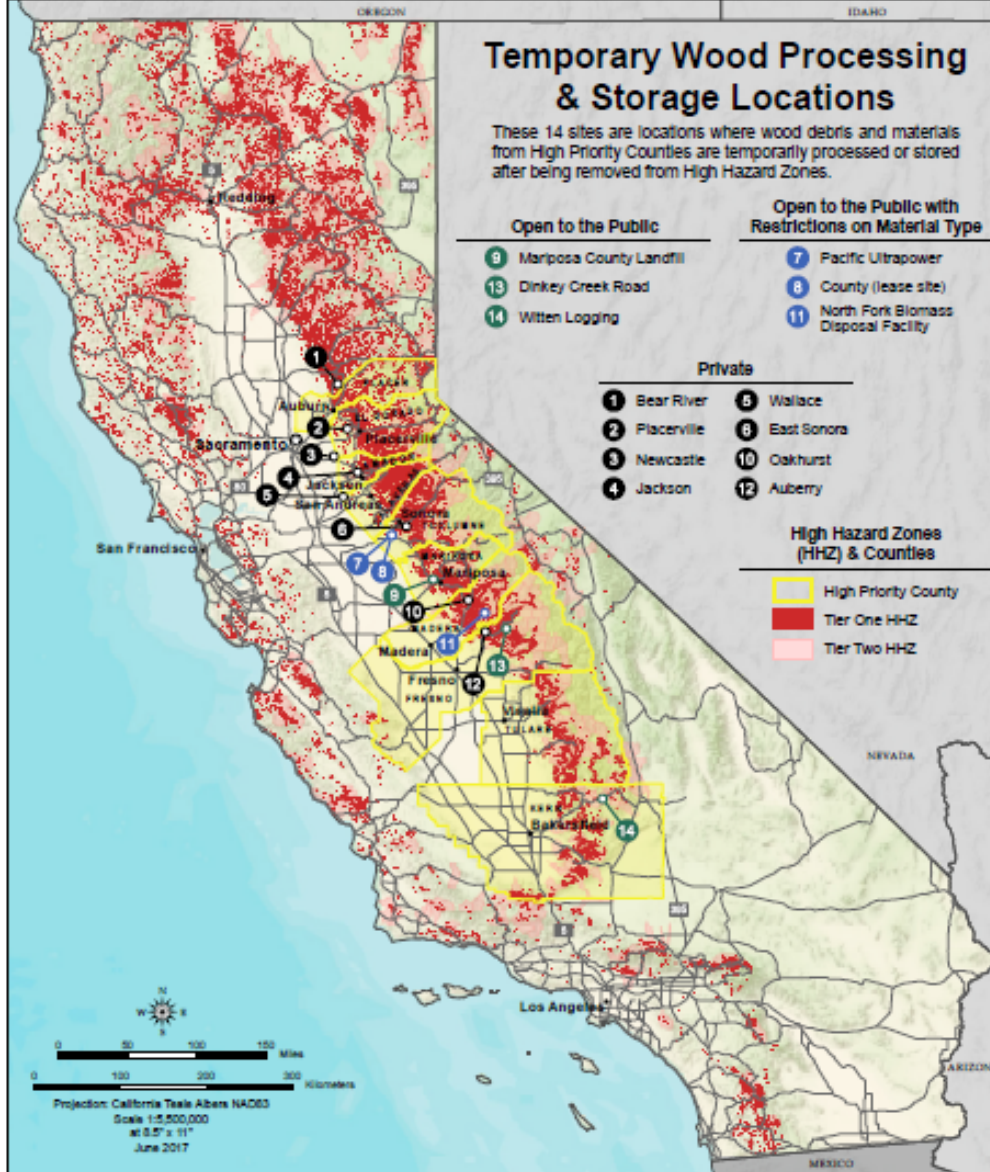
- 7 Pacific Ultrapower
- 8 County (lease site)
- 11 North Fork Biomass Disposal Facility

Private

- 1 Bear River
- 2 Placerville
- 3 Newcastle
- 4 Jackson
- 5 Wallace
- 6 East Sonora
- 10 Oakhurst
- 12 Auberry

High Hazard Zones (HHZ) & Counties

- High Priority County
- Tier One HHZ
- Tier Two HHZ



Projection: California Teale Albers NAD83
 Scale: 1:5,500,000
 at 8.5° x 11"
 June 2017

Thank you!



Angie Lottes

Biomass Program Director

The Watershed Center

angie@thewatershedcenter.com







