

# Determining Patch Priority for Weed Management on Rangelands

Stephanie Larson, Ph.D.  
Livestock and Natural Resource Advisors  
University of California Cooperative Extension

University of California  
Agriculture and Natural Resources

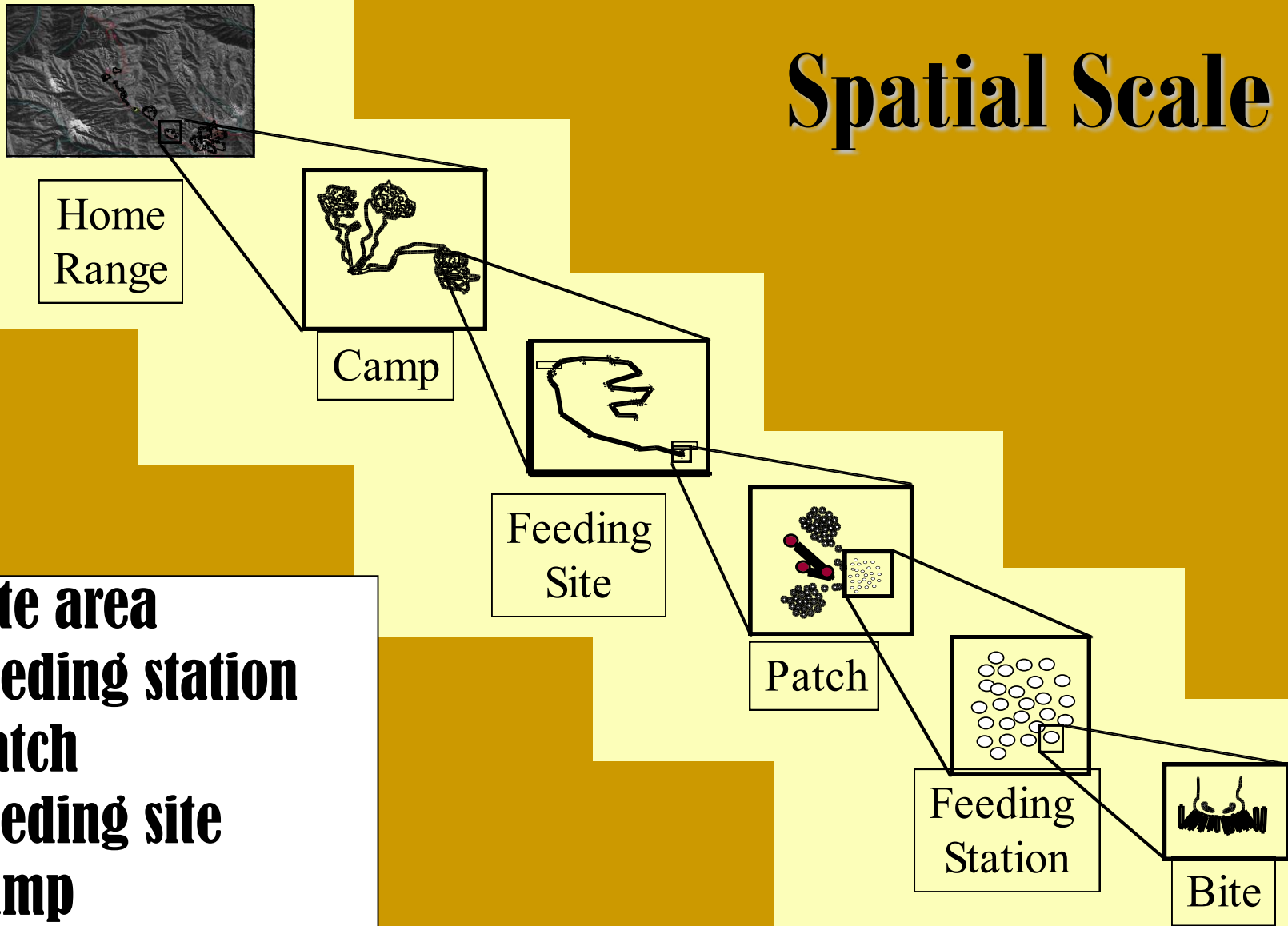
*Making a Difference  
for California*



# Rangelands on a Spatial and Temporal Scale



# Spatial Scale



**Bite area**  
**Feeding station**  
**Patch**  
**Feeding site**  
**Camp**  
**Home Range**

Senft et al. (1985)

Bailey et al. (2001)

# Patch Distribution

## Spatial & Temporal Scale

**Bite area ~ 1-2 seconds**

**Feeding station ~ 5 – 100 seconds**

**Patch ~ 1-30 minutes**

**Feeding site ~ 1-4 hours**

**Camp ~ 1-4 weeks**

**Home Range ~ 1 Mo to 2 Yrs.**

# Patch Identification & Prioritization



## **Patch**

**Small scale; 0-40 m**

**Large scale: 40-300, >**

**Turning Frequency**

**Frequency of Selection**

# Plant Community and Patch Attributes

<b>Attribute</b>	<b>Function</b>
<b>Moisture holding capacity of soil</b>	<b>Forage supply and stability of supply</b>
<b>Species composition</b>	<b>Affects suitability/stability of the site for general dietary and nutritional needs</b>
<b>Plant frequency</b>	<b>Affects the probability of encounter of plant species by animal and number of dietary decisions</b>
<b>Abundance</b>	<b>Affects supply of nutrients</b>
<b>Structure</b>	<b>Affects accessibility and harvest ability of plant species and nature of thermal niches provided</b>
<b>Continuity</b>	<b>Affects movement velocity</b>
<b>Size</b>	<b>Affects amount of search area available</b>
<b>Aspect</b>	<b>Affects the thermal characteristics of the site</b>
<b>Orientation in landscape</b>	<b>Position relative to needs foci affects frequency of exposure to grazing</b>

# Plant Community and Patch Attributes

Attribute	Function
Moisture holding capacity of soil	Forage supply and stability of supply
Species composition	Affects suitability/stability of the site nutritional needs
Plant frequency	Affects the probability of encountering number of dietary decisions
<b>Abundance</b>	<b>Affects supply of nutrients</b>
Structure	Affects accessibility and harvest ability of plants of thermal niches provided
Continuity	Affects movement velocity
Size	Affects amount of search area available
Aspect	Affects the thermal characteristics of
Orientation in landscape	Position relative to needs foci affects grazing

Diagram A

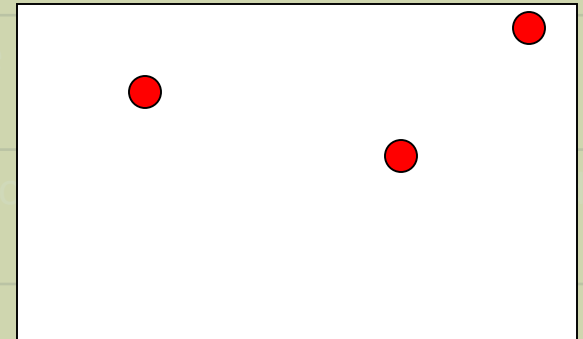
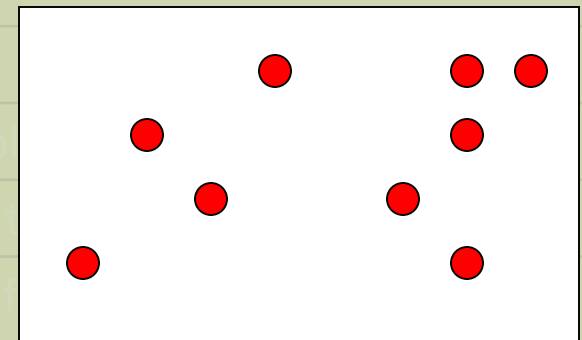




Diagram B

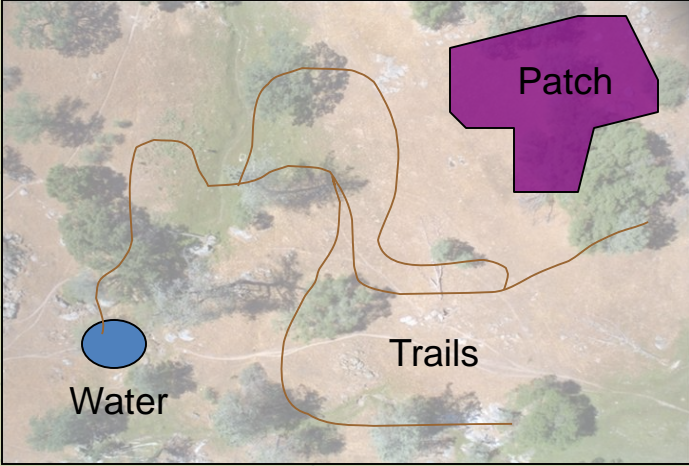
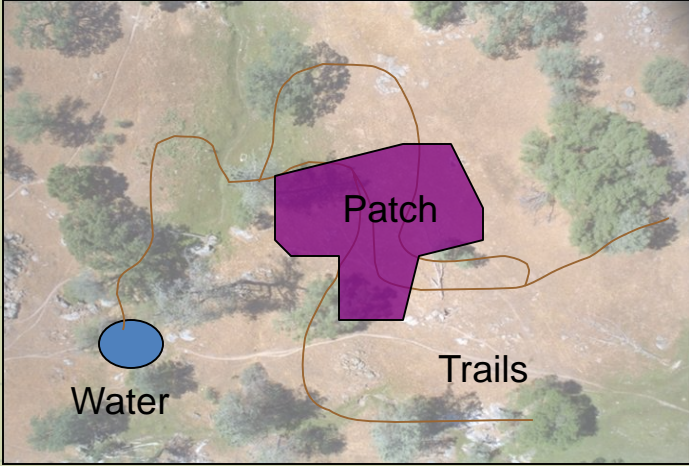


# Plant Community and Patch Attributes

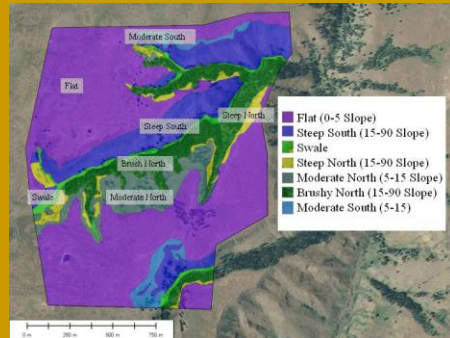
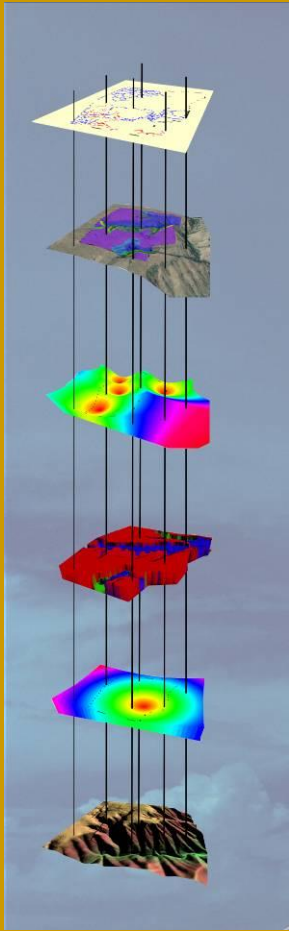
Attribute	Function
<p data-bbox="401 462 575 505">Patch A</p> <p data-bbox="336 525 529 568">← 30 m →</p>  <p data-bbox="146 688 255 731">40 m</p> <p data-bbox="274 953 757 996">Area <math>30 \times 40 = 120 \text{ m}^2</math></p>	<p data-bbox="1271 476 1445 519">Patch B</p>  <p data-bbox="1646 791 1754 833">20 m</p> <p data-bbox="1445 925 1638 968">← 30 m →</p> <p data-bbox="1224 988 1684 1031">Area <math>30 \times 20 = 60 \text{ m}^2</math></p>
<b>Size</b>	<b>Affects amount of search area available</b>
Aspect	Affects the thermal characteristics of the site
Orientation in landscape	Position relative to needs foci affects frequency of exposure to grazing



# Plant Community and Patch Attributes

Attribute	Function
<p data-bbox="291 572 523 622"><b>Pasture A</b></p> <p data-bbox="291 654 788 689">Patch is Far from Water/Trails</p> 	<p data-bbox="1174 572 1412 622"><b>Pasture B</b></p> <p data-bbox="1174 654 1671 689">Patch is Close to Water/Trails</p> 
<p data-bbox="65 1268 349 1365"><b>Orientation in landscape</b></p>	<p data-bbox="537 1268 1789 1365"><b>Position relative to needs foci affects frequency of exposure to grazing</b></p>

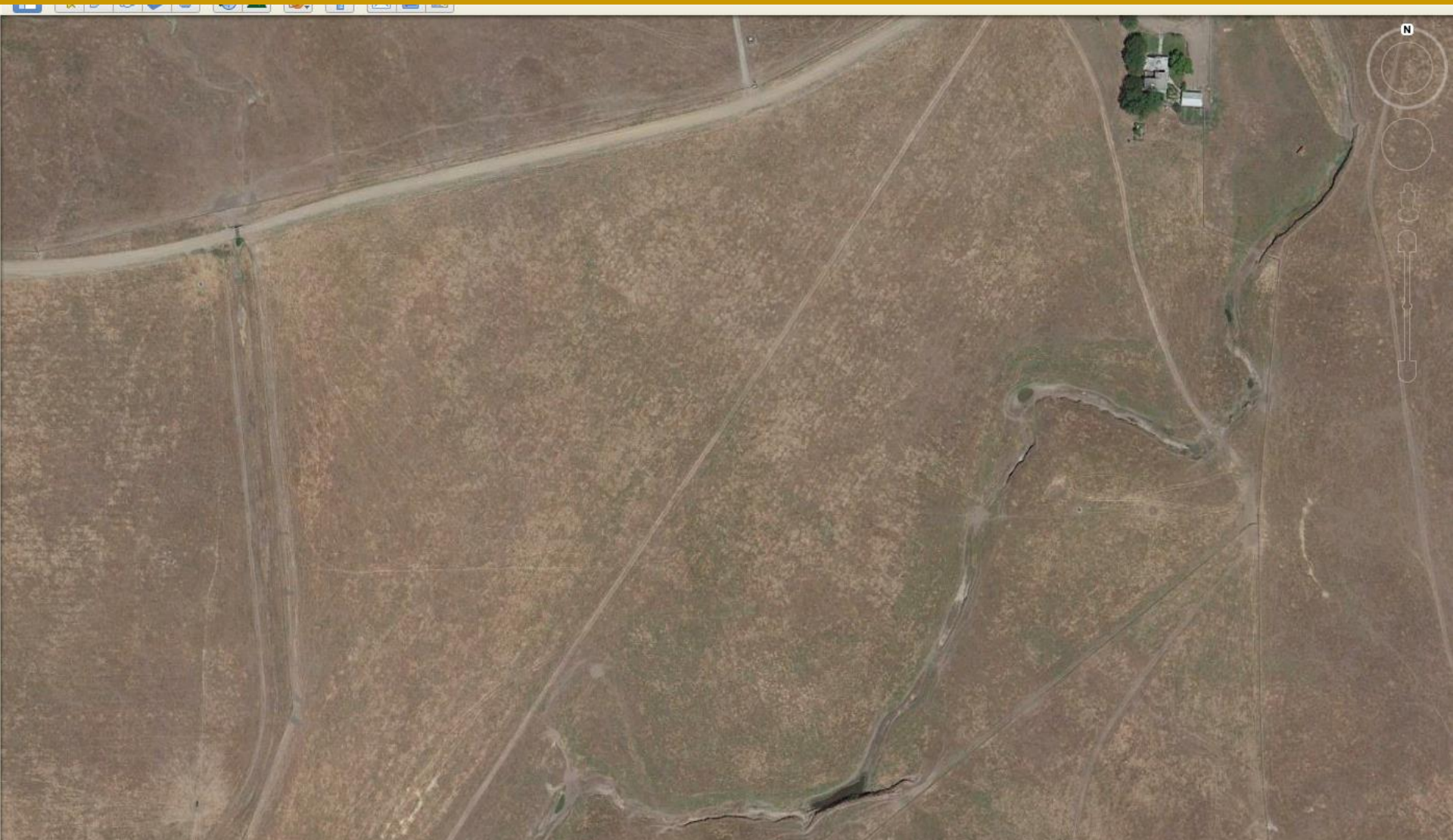
# Scientific Analysis of Patches



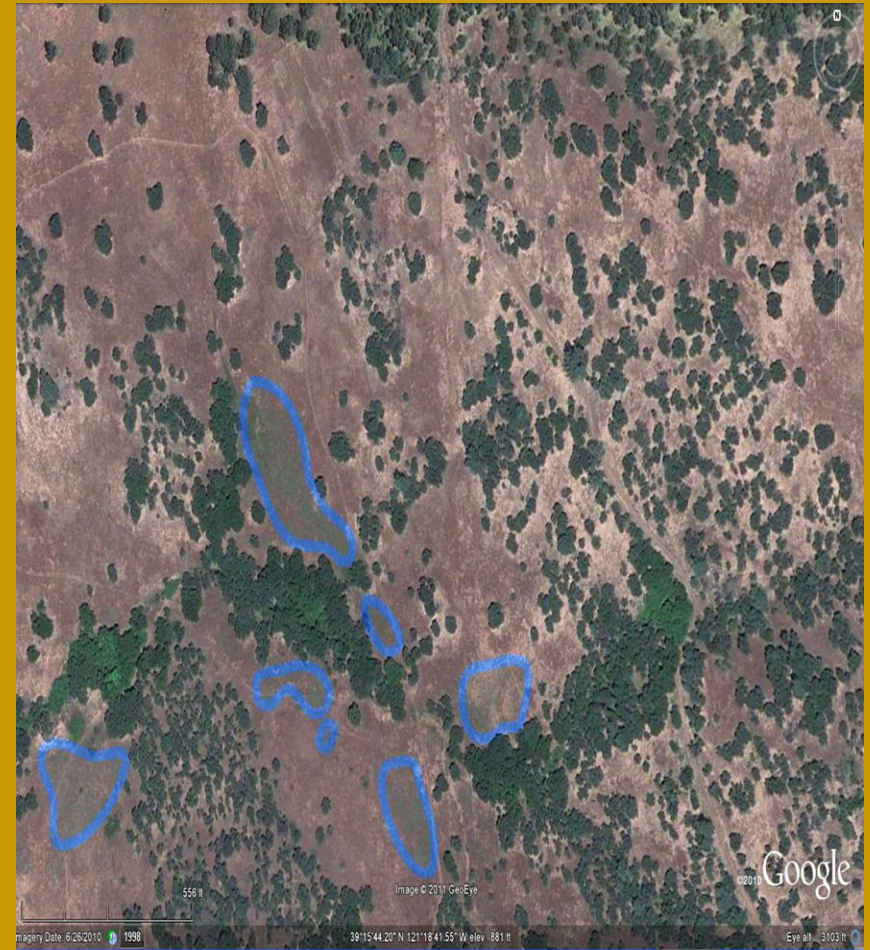
- Geographical Information Systems (GIS)
- Develop layers of information
  - Canopy Cover
  - Soil type
  - Aspect of the landscape
  - Slope of the landscape
  - Aerial photography
  - Vegetation

Web based decision making tool ~ Can determine the boundaries of patches

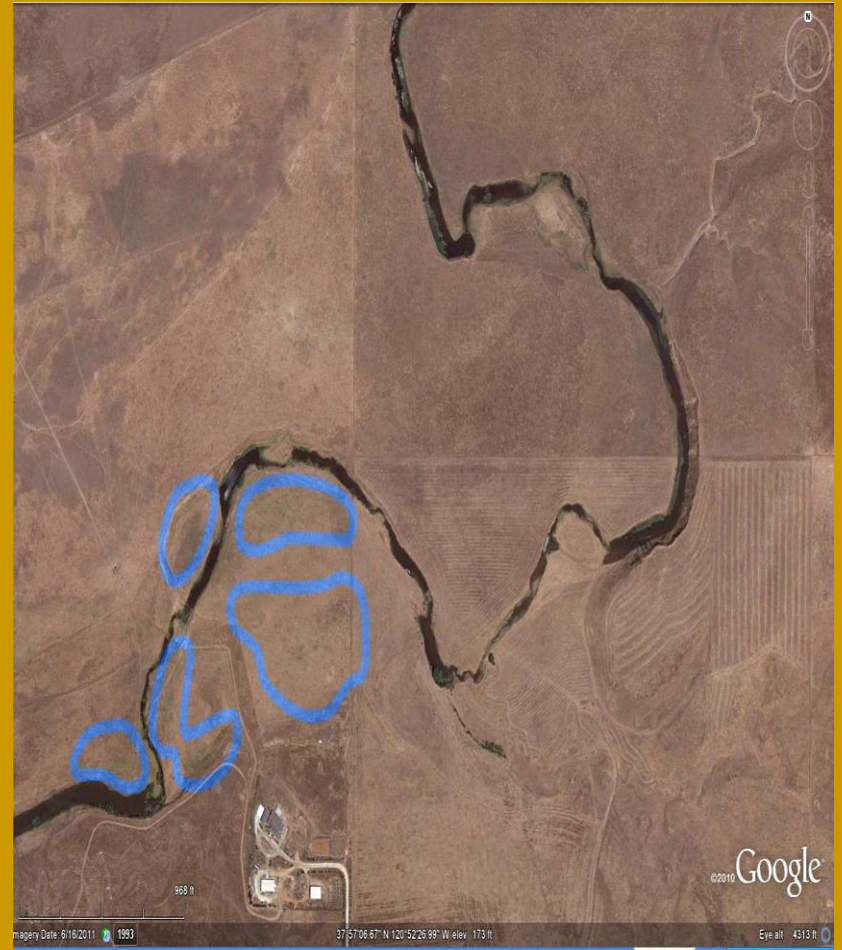
# Google Maps



# Patch ~ Google Map



# Patch Prioritization



# Determining Patch Priority

Determine statewide priority for weed patches

Determine landscape scale priorities

Determine ranch scale priorities

Determine where to spend limited money for best results