

4-H YOUTH DEVELOPMENT PROGRAM IN SANTA BARBARA COUNTY



POULTRY LEVEL TEST STUDY GUIDE LEVELS III & IV



Passing Score for Level III & IV is 75%

IMPORTANT INFORMATION

In levels three and four, members will be expected to know both the *American Standard of Perfection* (from the American Poultry Association) and the *Bantam Standard* (from the American Bantam Association) in depth. Questions may also be taken from the study guide for Level I & II, so members should make sure to review.

In the *American Standard of Perfection* there are six large fowl classes. They include American, Asiatic, English, Mediterranean, Continental, and All Other Standard Breeds. Some classes are divided up into sub classes. For example, All Other Standard Breeds is divided into Game Birds, Oriental, and Miscellaneous, and the Continental class is divided into European, Polish, and French. Bantam chicken classes include Game Bantams, Single Comb Clean Legged (other than Game Bantams), Rose Comb Clean Legged, All Other Combs Clean Legged, and Feather Legged. For waterfowl all the classes are divided by weight: Heavy Ducks, Medium Ducks, Light Ducks, and Bantam Ducks. For Geese the classes are Heavy Geese, Medium Geese, and Light Geese. There is also a Turkey class which includes many different varieties. Birds can be in as few as one class and up to three, so know the classes for all the breeds.

In the *Bantam Standard* there are seven classes and ALL the birds are bantams. The classes are: Game Bantams, Modern Game, Single Comb Clean Legged, Rose Comb Clean Legged, All Other Combs Clean Legged, Feather Legged, and Bantam Ducks.

Members should know what birds have crests (polish, sultans, crevecouers, houdans, and silkies), multiple spurs (Sumatras), beards (D'Anvers, D'Uccles, Faverolles, Polish, Sultans, Crevecouers, Houdans, Silkies,), five toes (dorkings, Silkies, Sultans, Faverolles, Houdans), dewlaps (Brahma hens), frizzled feathers (any frizzled chicken and Sebastapol Geese), pearl eyes (Malay, Shamo, Aseel, and Cornish), multiple comb types (Leghorn, Rhode Island Red, Dorking, Ancona, Minorca), tassels (Pynchon), more than five points on a single comb (Holland, Dorking, Jersey Giant, Minorca, Catalana), squirrel tails (Japanese), snoods (turkeys), and mulberry skin (Sebrights, Silkies, Sumatras, etc.). It is also good to know how many varieties there are of certain breeds and what birds are the heaviest and lightest in each class.

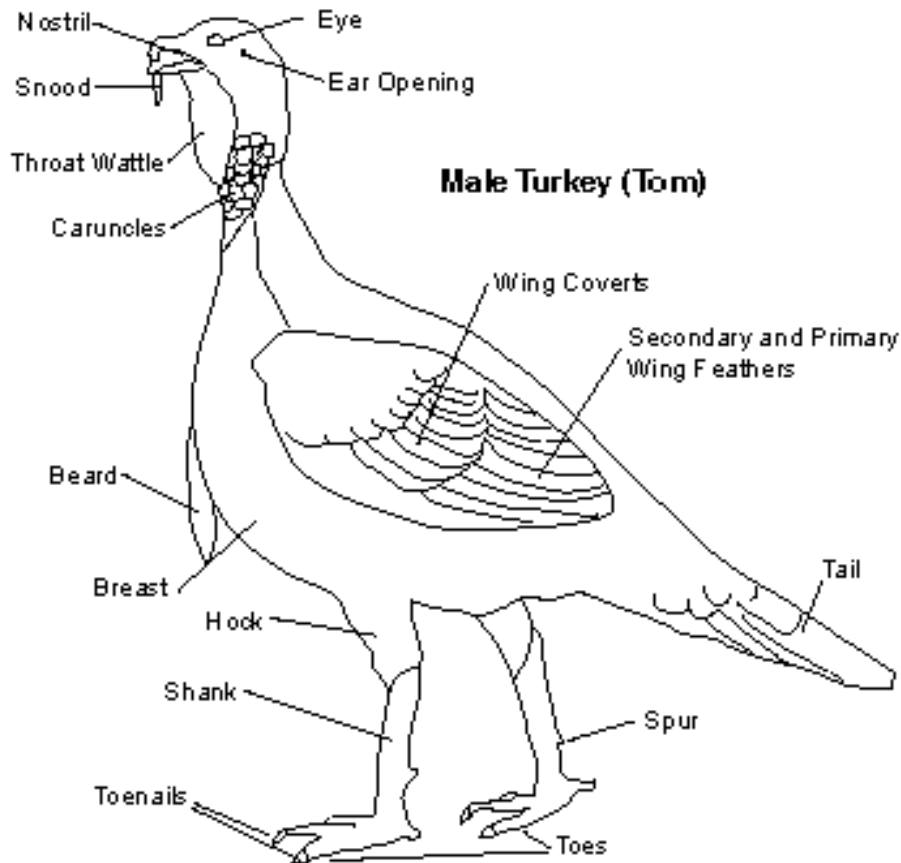
Parts identification is very important in levels three and four. Members should know different names for the breast bone (keel and sternum) and the parson's (or pope's) nose (uropigium), as well as what parts are found on each breed. For example, some birds may have sails (Mandarin Ducks) and other birds may not. Combs are also very important and members should know how many comb types there are and what breeds have each type. They should also be able to identify different varieties and know what colors should be found on each part of the body.

The best resource to prepare for the multiple choice, fill in the blank, and short answer questions are the *American Standard of Perfection* and the *Bantam Standard*.

Make sure to study *both* standards, and carefully review the difference between a disqualification and a defect. One bird's disqualification may be another bird's defect.

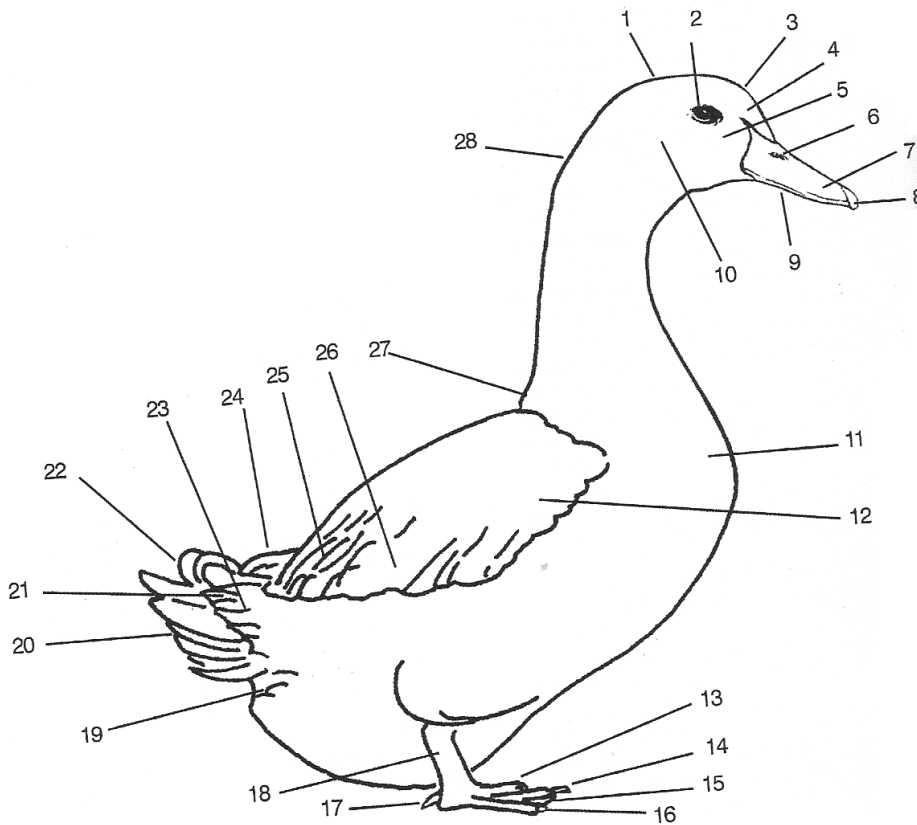
Good luck!

BE ABLE TO IDENTIFY THE PARTS OF THE TURKEY (Level III)



BE ABLE TO IDENTIFY THE FOLLOWING PARTS OF THE MALE DUCK (Level III)

Bean	Breast	Crown	Ear Coverts
Face or Lores	Forehead	Hind Toe	Inner Toe
Iris	Lower Mandible	Mantle	Middle Toe
Molar Region	Nape	Nostril	Outer Toe
Primary Feathers	Rump	Secondary Feathers	Sex Feathers
Shank or Tarsus	Speculum	Tail Feathers	Under Tail Coverts
Upper Mandible	Upper Tail Coverts	Webbing	Wing Coverts

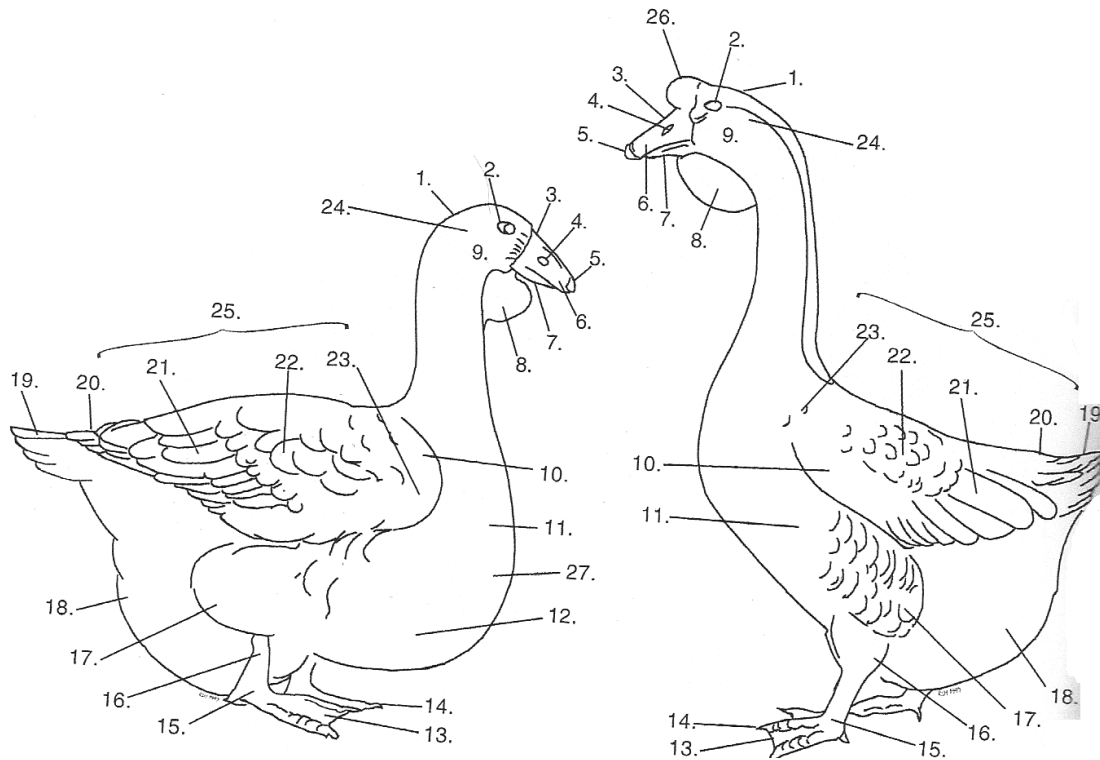


BE ABLE TO IDENTIFY THE FOLLOWING DIFFERENT MALE AND FEMALE FEATHER TYPES (Level III)

Back	Body	Cape	Hackle
Lesser Sickle	Primary	Saddle	Secondary
Sickle	Tail		

Feathers will be illustrated individually (not shown as part of the bird).

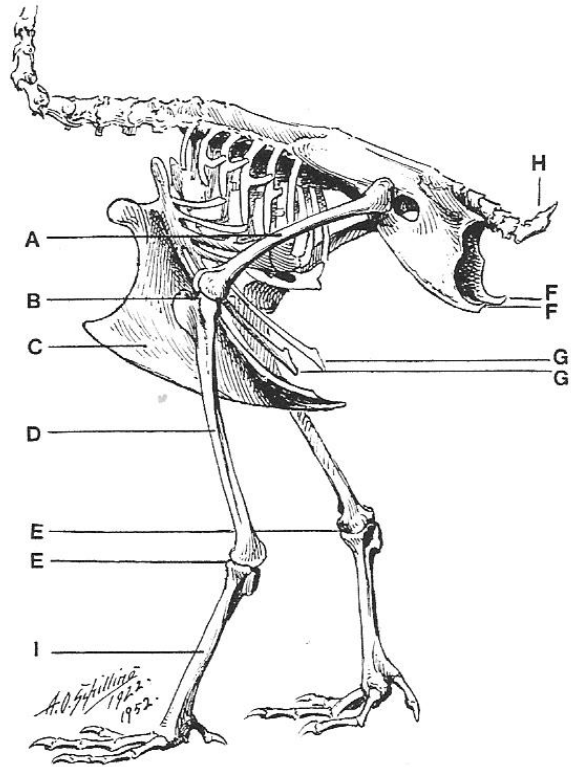
BE ABLE TO IDENTIFY THE PARTS OF GEESE (Level IV)



- | | | |
|-------------------|-----------------------|------------------------|
| 1. Crown | 11. Breast | 20. Primary Feathers |
| 2. Eye | 12. Keel | 21. Secondary Feathers |
| 3. Culmen | 13. Toes | 22. Scapula |
| 4. Nostril | 14. Webbing | 23. Shoulder |
| 5. Bean | 15. Shank or Tarsus | 24. Ear |
| 6. Upper Mandible | 16. Hock | 25. Back |
| 7. Lower Mandible | 17. Thigh Coverts | 26. Knob |
| 8. Dewlap | 18. Paunch or Abdomen | 27. Bow |
| 9. Face or Loes | 19. Tail Feathers | |
| 10. Wing Bow | | |

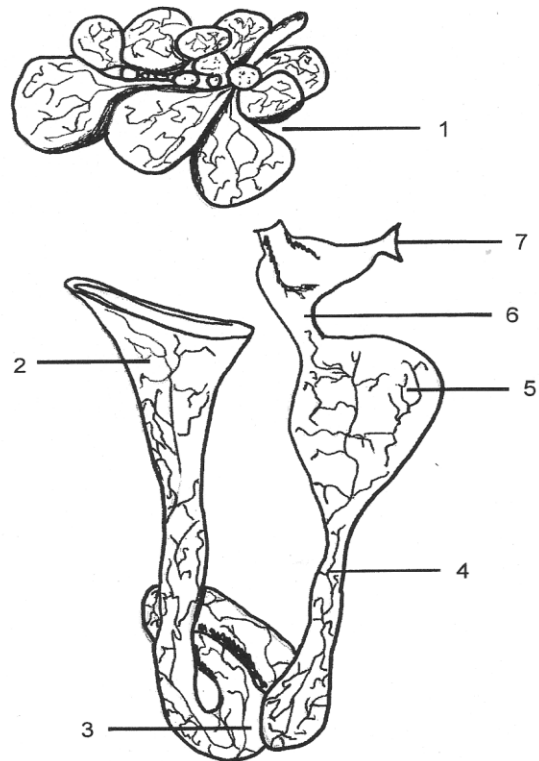
**BE ABLE TO LABEL THE SKELETAL FRAMEWORK OF FOWL
(Level IV)**

- A. Thigh or Upper Thigh (Femur)
- B. Thigh Joint
- C. Keel or Breast Bone
- D. Lower Thigh (Tibia)
- E. Hock Joint
- F. Pubic Bones
- G. Lateral Processes of Sternum
- H. Uropigium (Coccyx)
- I. Shank (Tarso-Metatarsus)



**BE ABLE TO IDENTIFY THE PARTS OF THE FEMALE REPRODUCTIVE SYSTEM
(Level IV)**

- 1. Follicle Sac
- 2. Infundibulum
- 3. Magnum
- 4. Isthmus
- 5. Uterus
- 6. Vagina
- 7. Vent



1	5
2	6
3	7
4	