

# Using Technology for Managing Invasives on Your Ranch

San Benito County Weed Management Area Continuing Education Seminar for Ranchers



**PastureMap**

# GRAZING PLAN 2011

Stocks	APRIL	MAY	JUNE	JULY	AUGUST
1			28 DAYS REST	clipped	54 DAYS REST
2			54 DAYS REST	clipped	32 DAYS REST
3				clipped	
4			49 DAYS REST	clipped	35 DAYS REST
5			44 DAYS REST	clipped	38 DAYS REST
6					
7		lots of feed	47 DAYS REST	clipped	
8			47 DAYS REST		
9			50 DAYS REST		
10			51 DAYS REST		
11			62 DAYS REST	clipped	52
12		wintered stockpile	53 DAYS REST		51
13			58 DAYS REST		50
14			51 DAYS REST	clipped	41 Days
15			WATERING TUB	clipped	
16			spread 10 loads		
17	FED WAY		38 DAYS REST		
18					
19					
20					
1			33 days rest		clipped
2					
3					

SARE training in Vermont

SARE training in Penn

(Sara) 14 calves to Waynes

Ken Jaffe 20 head

21 mommas & 15 wishmans

Ken Jaffe 58 head

harvested 1 steer

Ken Jaffe 7 head

Katie's graduation

Birds Fledged

SARE training Vermont

25th wedding anniversary trip

Katie's graduation party

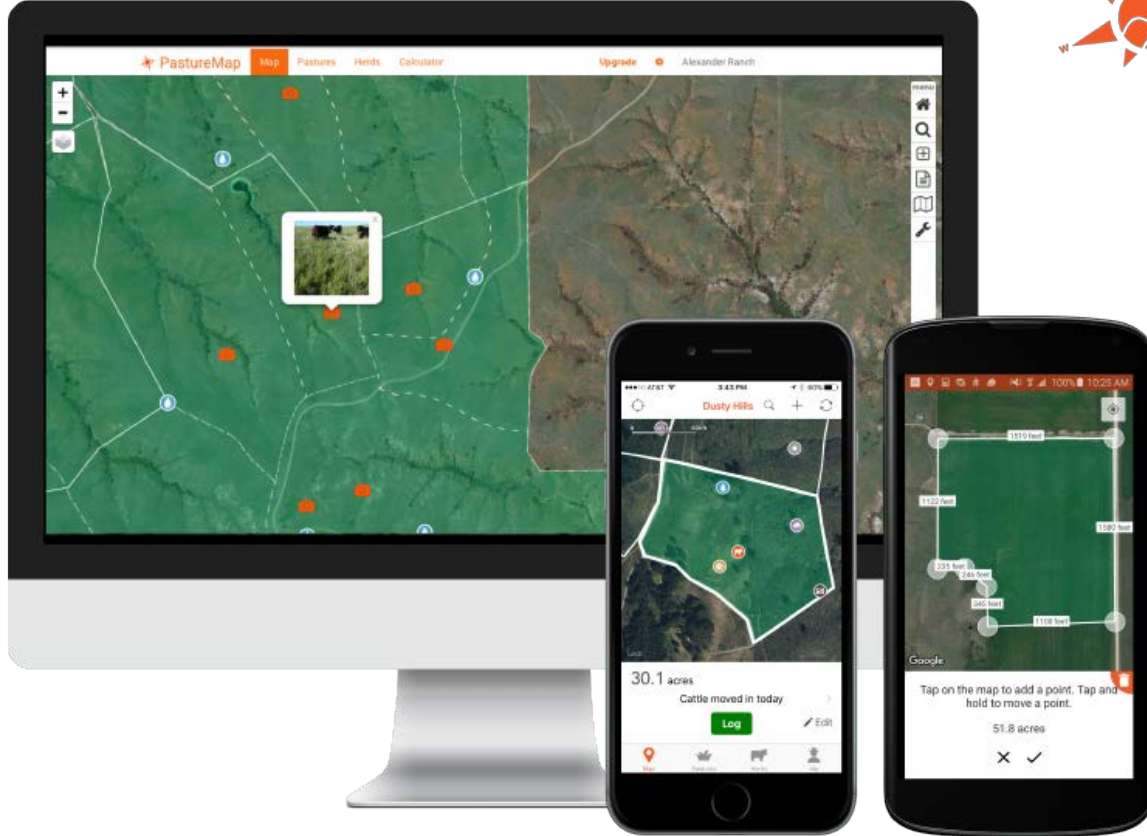
cash Holmes workshop PA

Stockpile? Bulls in?

Grazing management tools need updating



# PastureMap



- Create digital ranch maps
- Take photos and notes in the field
- Share records across ranch teams
- Compare results of grazing management year after year

# Create accurate ranch maps

**PastureMap** | Map | Pastures | **Grazing Chart** (BETA) | Herds | Calculator | Sonoma Mountain

**Ranch overview**

- 4298 acres
- 193 animals
- 2.4 ADAs per In of Rainfall This Season
- MOST RECENT ACTIVITY: Moved Beretta 2018 out of Glen Ellen Perimter-Subdivision 5, 9 days ago
- PLANNED HERD MOVES: No planned moves

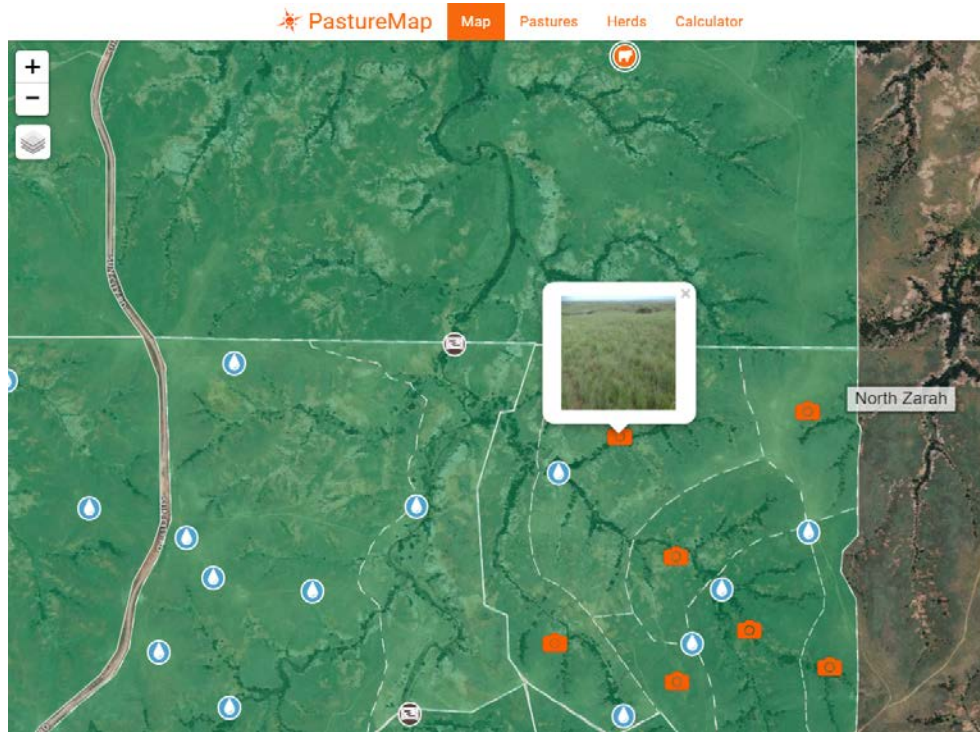
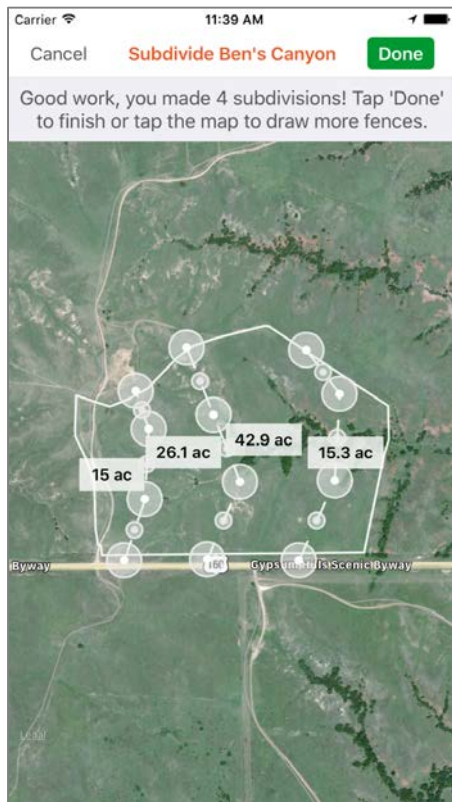
**NEWSFEED**

- 9 DAYS AGO | CURRENTLY GRAZING  
**Beretta 2018**  
Moved from [Glen Ellen Perimter-Subdivision 5](#) to [Glen Ellen Perimter-Subdivision 11](#)
- 10 DAYS AGO | 10 days  
**Bucher Hilltop 17/18**  
Moved from [Horse Pasture](#) to [Calf Pasture](#)
- 13 DAYS AGO  
**Beretta 2018**  
Moved from [Glen Ellen Perimter-Subdivision 7](#) to [Glen Ellen Perimter-Subdivision 5](#)

Sophie James Winery

# PastureMap turns your phone into a GPS

Draw fencelines or and photo points to monitor weeds



# Take photos with pasture field notes

Mar 8 2018, 2:41 PM: Pasture Inventory (MP 3)

AVAILABLE GRAZING DAYS — AVAILABLE DM —

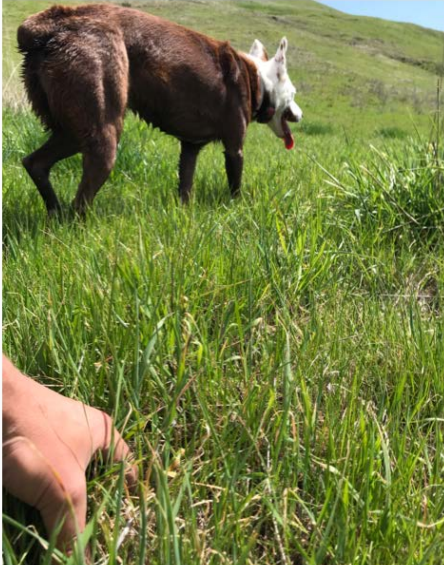

NOTES  
Cattle hit this hill Fenceline pretty hard in the rain there was a lot of impact it will be interesting to see how it comes back later. Side on the left was hit hard



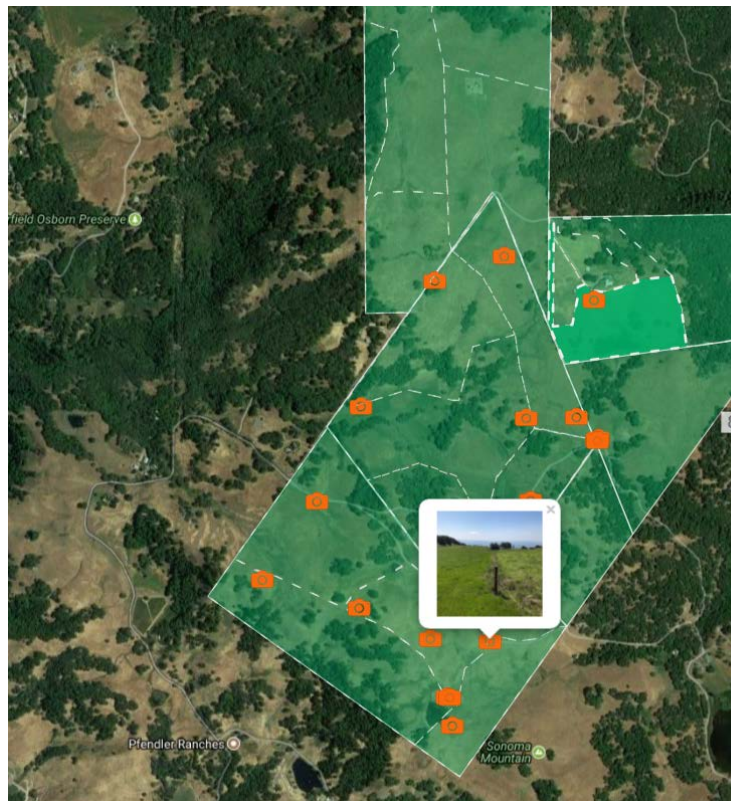
Apr 4 2018, 2:13 PM: Pasture Inventory (MP 2)

AVAILABLE GRAZING DAYS — AVAILABLE DM —

NOTES  
45 rest days and the grass is about 6 inches on average. There are two leaves on many of the areas that were bitten. Three leaves on some. Still feels early to come back but we will see



# Compare photos and grazing records in one place




The aerial map shows a large green pasture area with several orange circular markers numbered 1 through 15. A photo callout window is open over marker 1, showing a landscape view of a grassy field. The map includes labels for 'Field Osborn Preserve', 'Pfendler Ranches', and 'Sonoma Mountain'.

**Inventoried on May 16**

May 16 2017, 12:34 PM: Pasture Inventory (Subdivision 7)

AVAILABLE GRAZING DAYS: —      AVAILABLE DM: —

NOTES



**Panorama** grazed for **15 days** from May 9 - May 24

**Panorama** grazed for **4 days** from Apr 2 - Apr 6

**Beretta** grazed for **9 hours** from Apr 2 - Apr 3

Inventoried on Mar 30

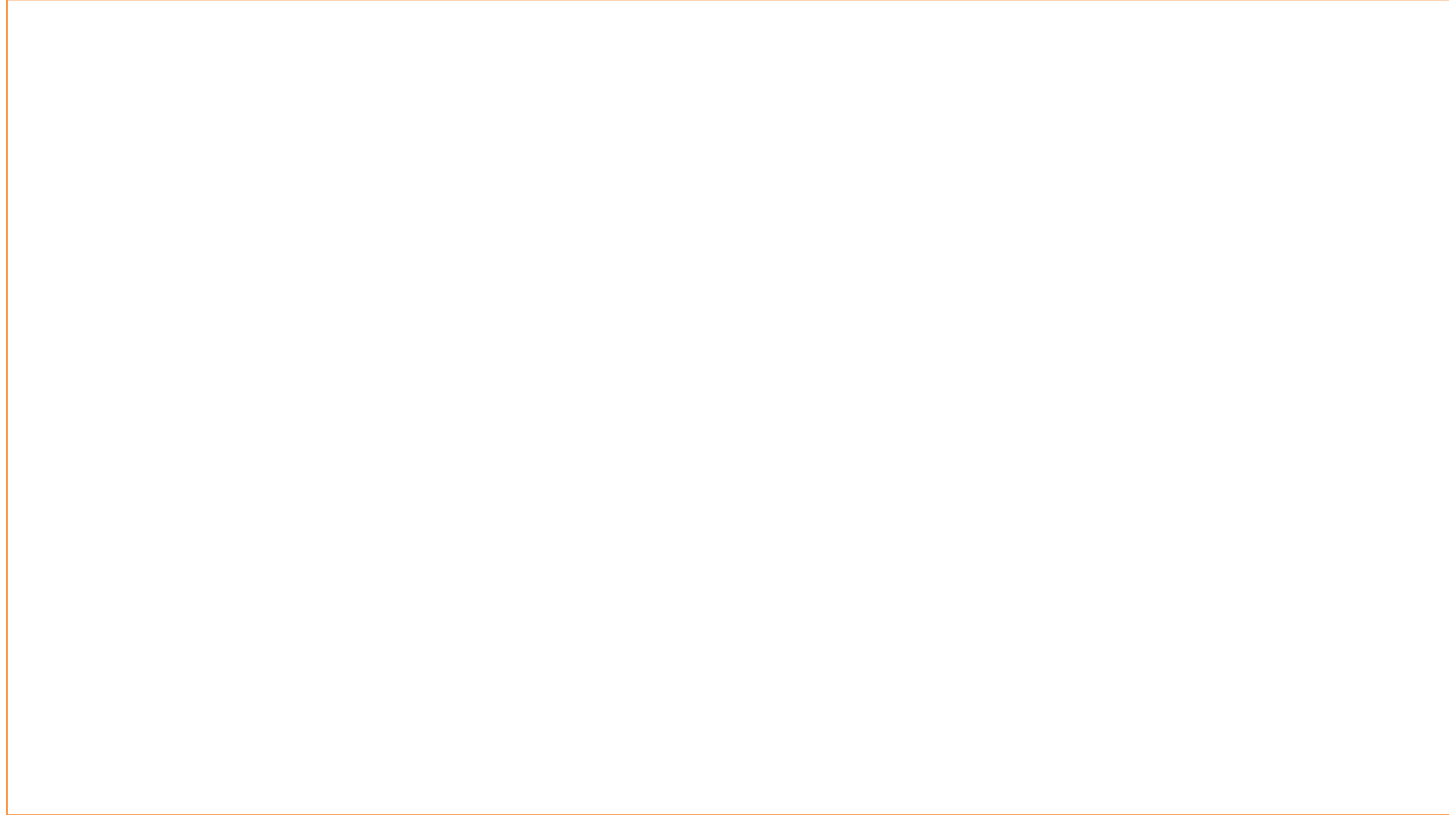
**Beretta**, **Panorama** grazed for **9 days** from Mar 24 - Apr 2

Inventoried on Mar 16

**Panorama**, **Beretta** grazed for **a day** from Mar 12 - Mar 13

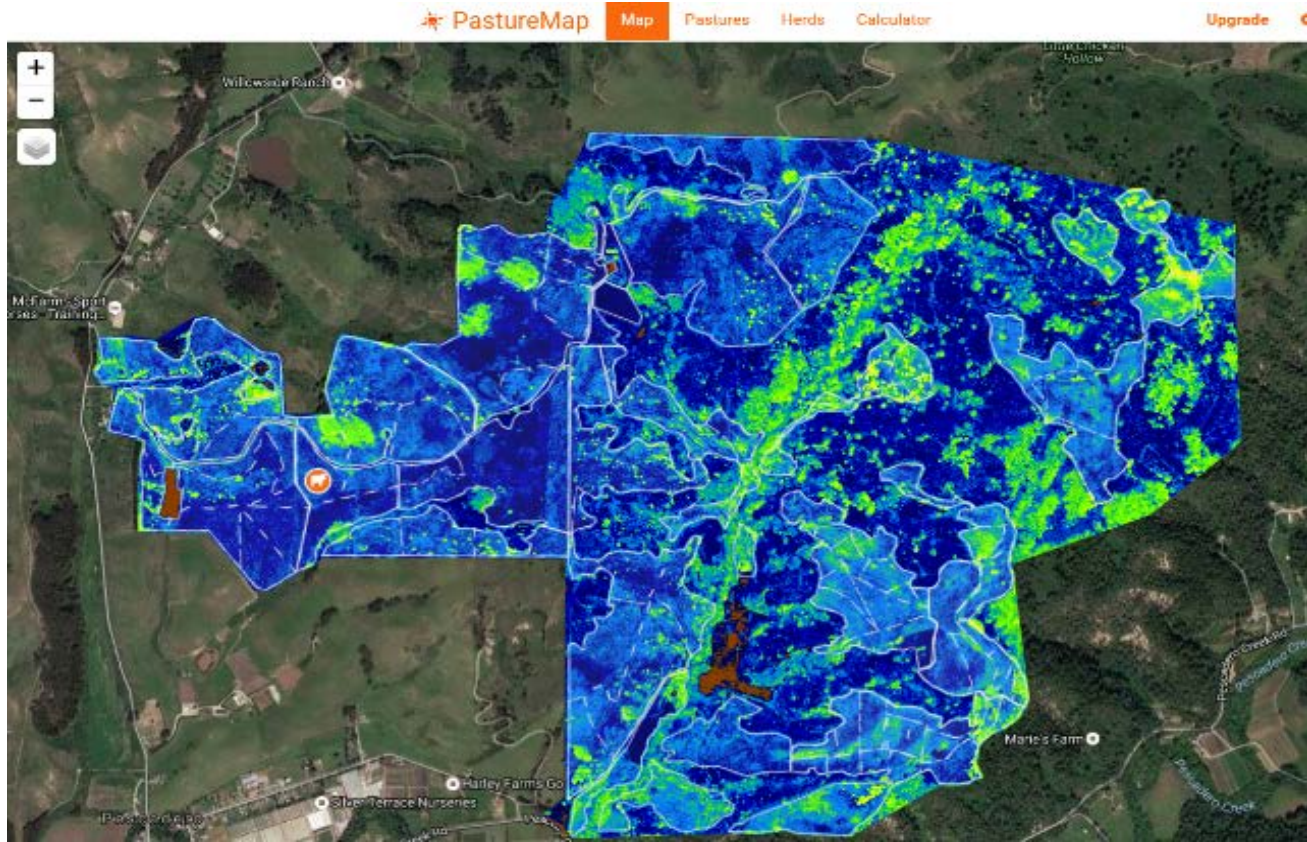
Easily track whether your management had an effect on invasive vegetation

Look up USDA soil data to see if soil type affects the presence of invasive vegetation on a pasture





# Integrate satellite or aerial imagery overlays to highlight invasive plant growth



# Grazing planning chart to plan grazing moves around weed treatment times or ecological goals

Sonoma Mountain Institute

4,298  
ACRES

4  
HERDS  
GRAZING

212  
ANIMALS  
GRAZING

6,146 lb  
FORAGE  
CONSUMPTION/DAY

78,822  
ANIMAL DAYS  
THIS SEASON

ACTIONS

▼ Add Herd Move

+ Pasture exclusion event

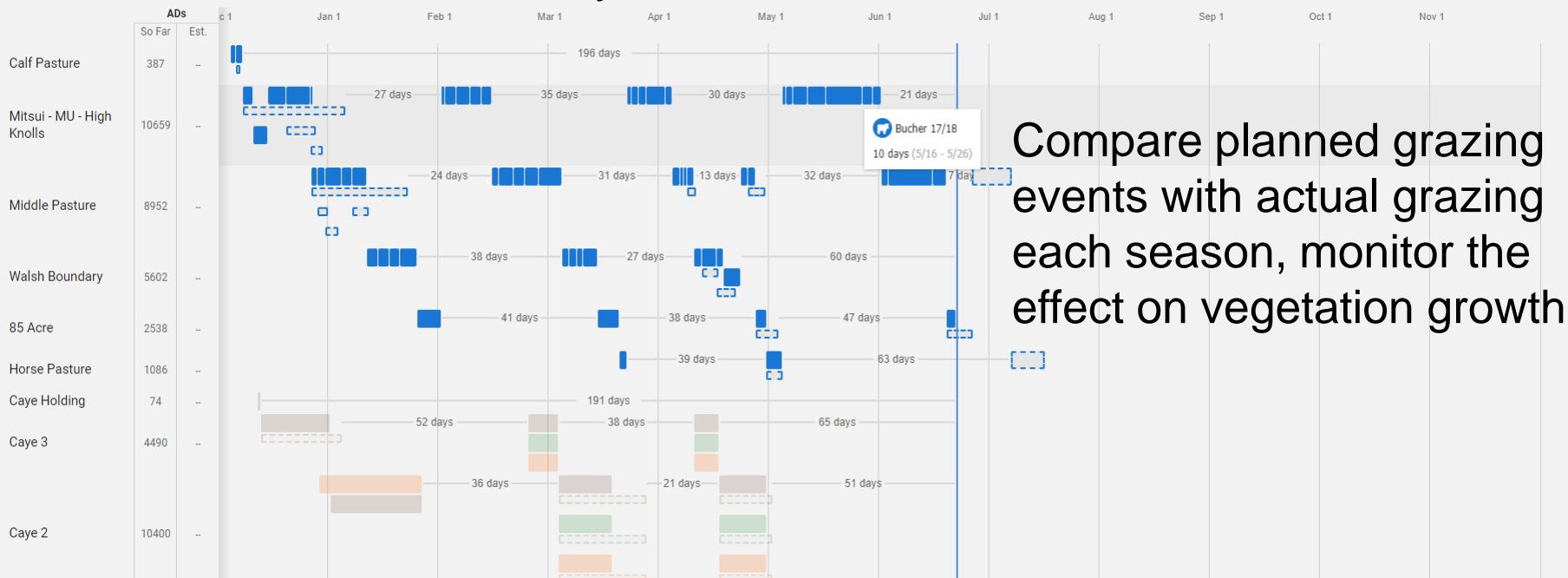
Block off certain periods from grazing for treatment days

ZOOM LEVEL

Year

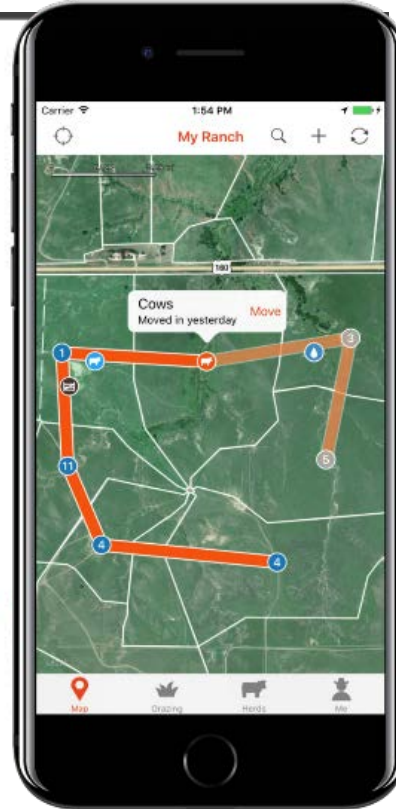
DATE CONTROLS

< TODAY >



Compare planned grazing events with actual grazing each season, monitor the effect on vegetation growth

# Free up hours of ranch team's time on invasive weed management and other ranch tasks



Ranch manager can plan out the activities for all 3 properties so they can all see the plan without driving hours with each other.

Staff can mark out where invasive species are, where valves are, or where the tree is down on the fence, and teammates can find it on their phone.



PastureMap is much more than weed  
management – learn more at  
[www.pasturemap.com](http://www.pasturemap.com)



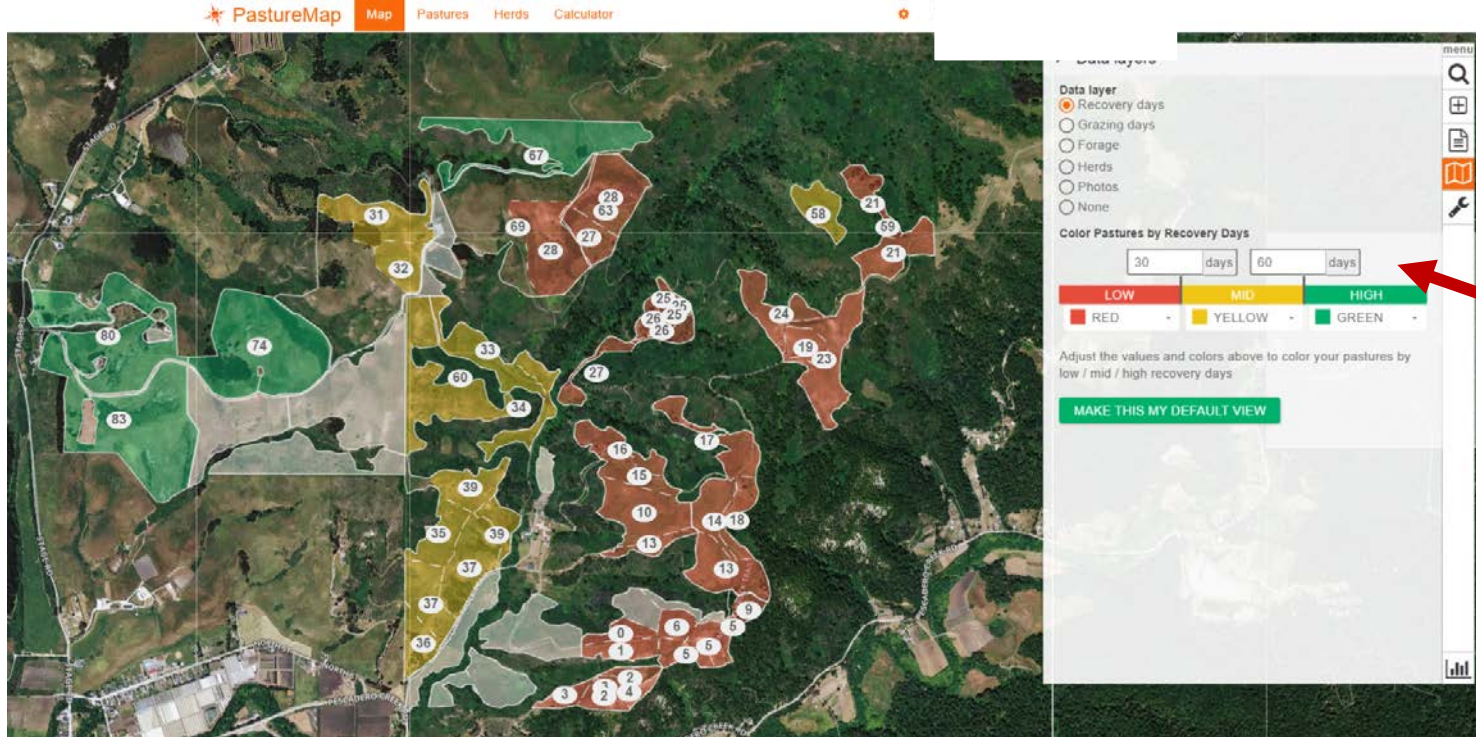
**PastureMap**

Thank you!

[christine@pasturemap.com](mailto:christine@pasturemap.com)

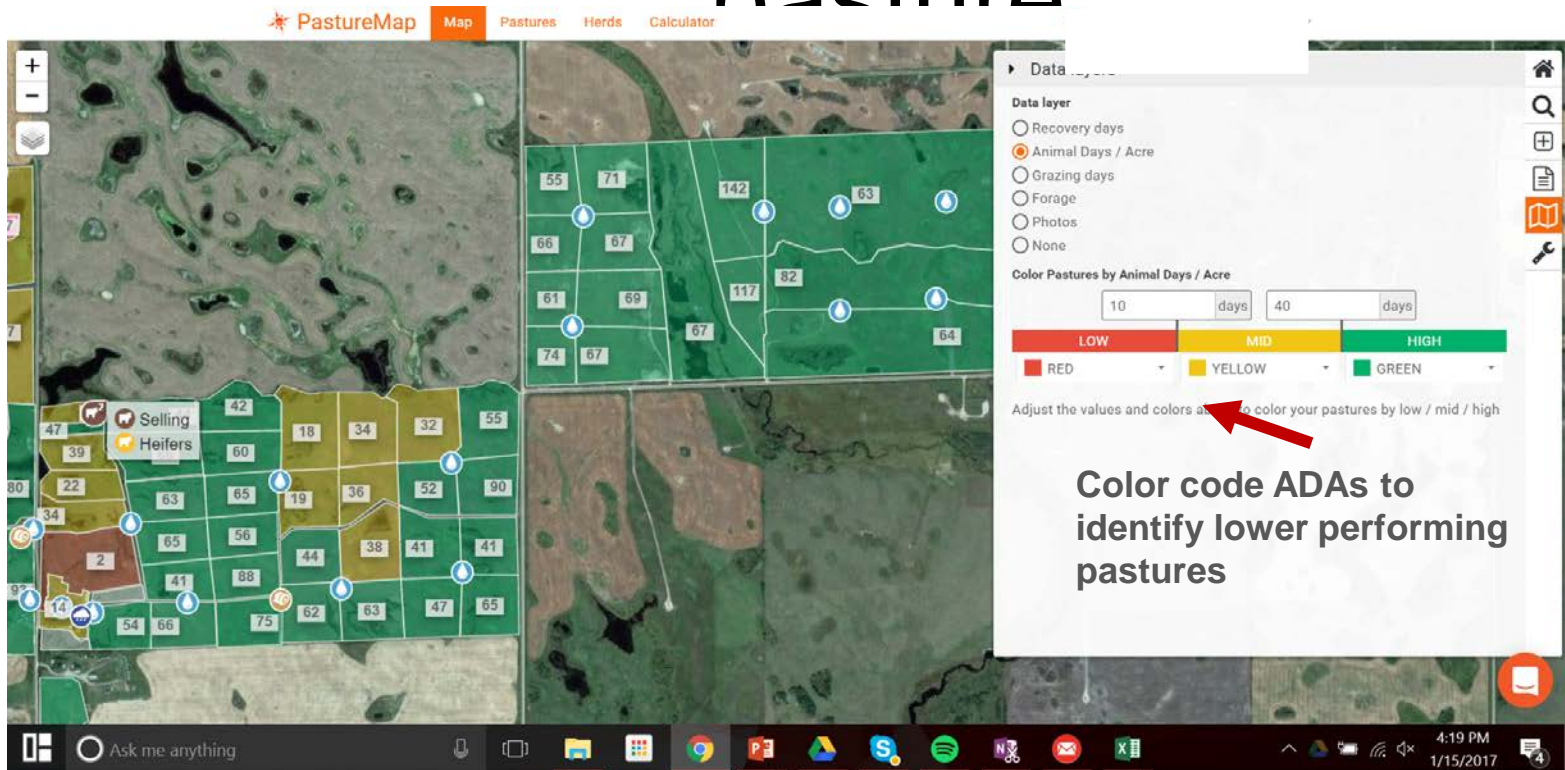
# Appendix

# View real-time rest days across pastures

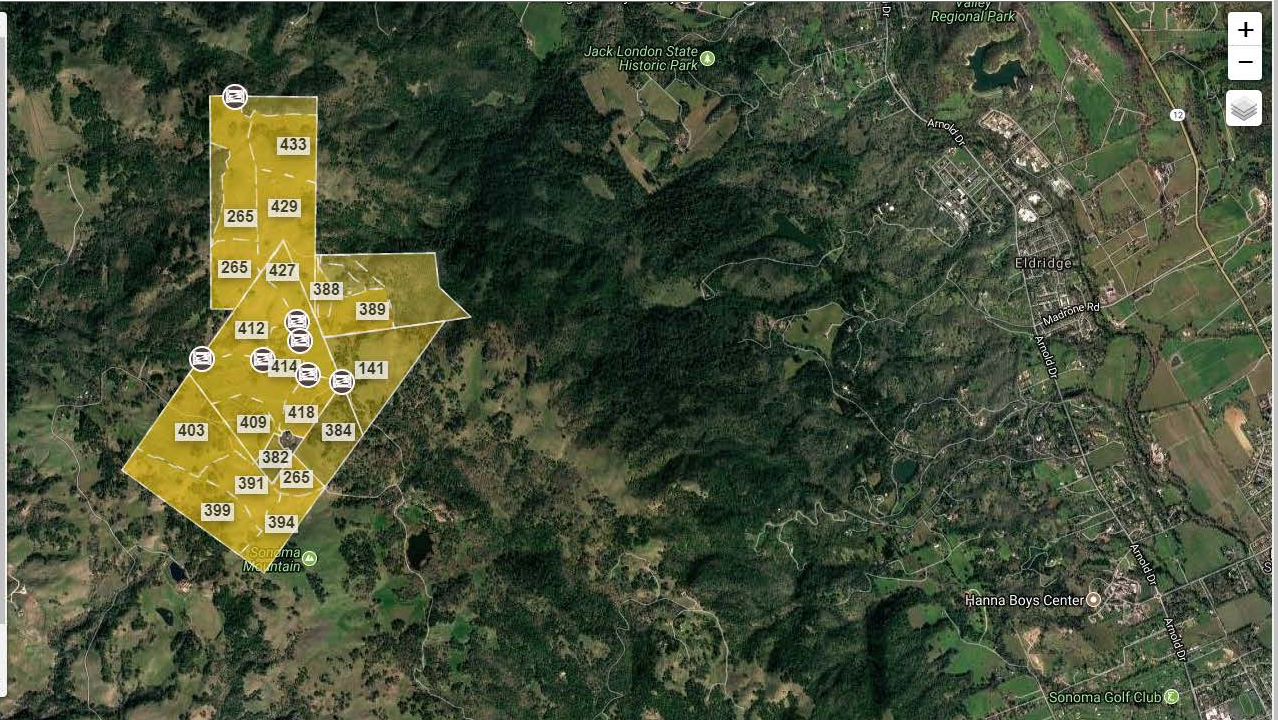
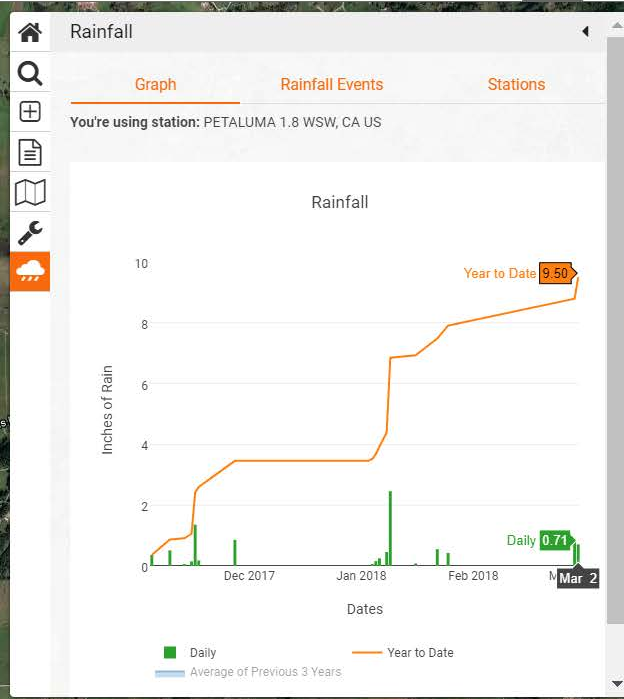


Set your optimal recovery periods – they turn from yellow to green when rested

# Measure grazing intensity with Animal Days / Acre grazed in each pasture



# Use rainfall data to compare pasture productivity across





# PastureMap has a user community of 10,000 farms and ranches in 40 countries. 5500+ are in North America

