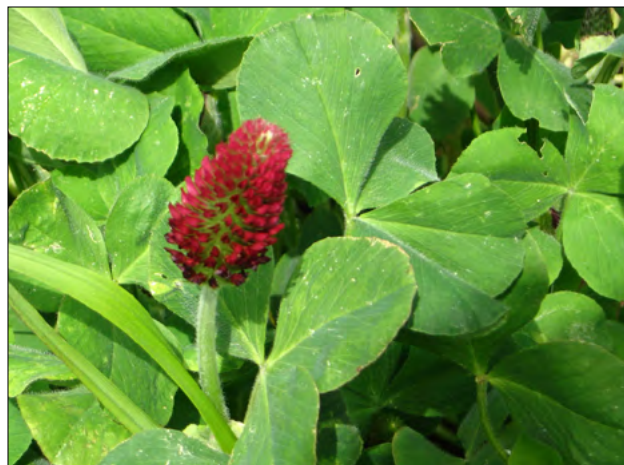


# ESTIMATING PLANT-AVAILABLE NITROGEN RELEASE FROM COVER CROPS



*D.M. Sullivan and N.D. Andrews*

## HIGHLIGHTS

- Legume cover crops provide up to 100 lb PAN/a. To maximize PAN contribution from legumes, kill the cover crop at bud stage (early May).
- Cereal cover crops immobilize up to 50 lb PAN/a. To minimize PAN immobilization from cereals, kill the cover crop during the early stem elongation (jointing) growth stage (early April).
- Legume/cereal cover crop mixtures provide a wide range of PAN contributions, depending on legume content. When cover crop dry matter is 75 percent from cereals + 25 percent from legumes, PAN is usually near zero.
- A laboratory analysis for cover crop total N as a percentage in dry matter (DM) is a good predictor of a cover crop's capacity to release PAN for the summer crop.
  - When cover crops contain a low N percentage (less than 1.5 percent N in DM), they provide little or no PAN.
  - When cover crops contain a high N percentage (3.5 percent N in DM), they provide approximately 35 lb PAN/ton of dry matter.
  - PAN release increases linearly, as cover crop N percentage (in DM) increases from 1.5 to 3.5 percent.
- Cover crops decompose rapidly and release or immobilize PAN rapidly. Most PAN is released in 4 to 6 weeks after cover crop kill.
- PAN from legume cover crops is usually much less expensive than PAN from organic fertilizers.
- Values for cover crop PAN listed here are most applicable to winter cover crop/summer vegetable crop rotations in western Oregon and Washington.

Dan M. Sullivan, Extension soil scientist, and Nick D. Andrews, small farms Extension agent; both of Oregon State University

Cover crops provide many benefits: reduced soil erosion, improved soil tilth, and increased soil biological activity, to name a few. Legume cover crops are especially important for maintaining nutrient balance in organic cropping systems because they are one of the few organic inputs that supply nitrogen (N) without phosphorus (P) or potassium (K). Cereal cover crops are planted mainly with two goals: (1) maintaining vegetative cover in winter (to reduce soil erosion) and (2) to take up residual soil nitrate-N from the summer crop that might otherwise leach to groundwater.

A key benefit of cover crops is their ability to supply plant-available nitrogen (PAN) for the following crop. PAN consists of ammonium-N + nitrate-N. The PAN provided by a cover crop can replace purchased N inputs such as fertilizer, compost, or manure. But, to take advantage of this benefit, you need to know how to predict the PAN value of the cover crop. How much PAN is provided? When is PAN provided? What is the best way to predict the PAN-supplying ability of various cover crop species and mixtures?

## What is in this publication?

This publication has four sections:

- PAN basics (pages 2–5)
  - Why cover crop N percentage is a good indicator of cover crop PAN
  - Other cover crops
  - When to kill a winter cover crop to get maximum PAN benefit
  - Estimating PAN
- Applicability of this guide (page 5)
- A site-specific method to estimate PAN: step-by-step instructions on how to perform site-specific measurements to predict PAN from your cover crop (pages 6–9)
- Case studies: Willamette Valley examples addressing frequently asked questions about cover crop management, PAN, and the value of cover crop PAN as an N fertilizer substitute (pages 10–16)

In addition, a series of appendices summarize Willamette Valley cover crop research that supports our PAN estimates (pages 17–21).

## PAN basics

### Why cover crop N percentage is a good indicator of cover crop PAN

Cover crops may increase or decrease N fertilizer needs for the following crop in the rotation. Because decomposition happens quickly, so does PAN release or immobilization (negative PAN).

PAN released from a cover crop depends on crop species and crop growth stage. In general, green leafy plant tissues have high N concentrations and high PAN. More mature plant tissues (stems) have low N concentrations and low or negative PAN.

Carbon (C) and N dynamics control PAN release. As soil organisms decompose cover crop residues, a portion of cover crop C is lost from soil (as carbon dioxide). The remaining cover crop C is transformed by the decomposition process, yielding fresh soil organic matter with a C:N ratio of approximately 12:1. For a typical cover crop, 60 percent of cover crop C is lost as carbon dioxide, and 40 percent of cover crop C is incorporated into soil organic matter. Most of this decomposition occurs in the first 4 to 6 weeks after spring plowdown.

Nitrogen percentage in a cover crop is strongly related to PAN release following cover crop incorporation, as illustrated in the conceptual example given in Table 1 (page 3).

- For legumes (e.g., common vetch) that are high in N, about half of cover crop N is released as PAN because the cover crop has more N than needed to “build” soil organic matter.
- For non-legumes, such as cereal rye, that contain about 2 percent N in dry matter (DM) during stem elongation, the release of PAN is small, because most of the cover crop N goes into soil organic matter.
- When cereal crops reach the heading growth stage (1 percent N in DM), PAN is immobilized (made negative) by cover crop decomposition because more N is required to build soil organic matter than is present in the cover crop.

**Table 1.—Nitrogen fate after rapid phase of cover crop decomposition is completed.<sup>1,2</sup>**

Cover crop (%N in DM)	Growth stage	Biomass DM (lb/a)	Cover crop N uptake (lb/a)	N fate	
				N in soil organic matter (lb/a)	Plant-available N (PAN) NH <sub>4</sub> -N + NO <sub>3</sub> -N (lb/a)
Common vetch (3% N)	vegetative	3,000	90	40	50
Cereal rye (2% N)	stem elongation	3,000	60	40	20
Cereal rye (1% N)	heading	8,000	80	107	-27

<sup>1</sup>Rapid decomposition typically occurs during the first 4 to 6 weeks after cover crop plowdown.

<sup>2</sup>Assumptions: Cover crops contain 40 percent C in DM; 60 percent of cover crop C is decomposed (lost as carbon dioxide); all cover crop N is retained (zero N loss); stable soil organic matter has C:N ratio of 12:1; 1% N = 20 lb N/ton DM.

Cover crop roots contribute only a small amount of PAN for the following crop and are ignored in calculations used in this publication. Research conducted in western Washington showed that Austrian pea and hairy vetch cover crops contained approximately 100 lb N/a above ground, but only 10 lb N/a in roots (Kuo et al., 1997). Roots also had low N in DM (%N less than 2 percent; C:N ratio greater than 20), suggesting that PAN release would be near zero.

### Other cover crops

Phacelia is sometimes used to replace cereals as a winter cover crop. Like cereals, PAN from phacelia is positive in early vegetative growth, but is near zero or negative at flowering.

Brassicas provide PAN when killed at flowering growth stage (%N in DM is near 2 percent). Brassica cover crops are atypical in western Oregon vegetable crop rotations because of concerns about cross pollination of Brassica seed crops. Also, Brassica cover crops stimulate soil-borne diseases, such as club root, that can infect Brassica cash crops (cabbage, broccoli, turnips, etc.). Mustard (a Brassica species) is used successfully in eastern Oregon potato rotations.

### When to kill a winter cover crop to get maximum PAN benefit

PAN from any cover crop is minimal when the cover crop is killed when it is very small (e.g., in March). For solo cover crops, the best time to kill the cover crop to maximize PAN depends on whether the cover crop is a legume or a non-legume.

- PAN from a good stand of legumes (Figure 1) peaks at budding growth stage (May). PAN declines slowly as reproductive growth continues.
- PAN from cereal residues is positive early in the spring (through tillering, mid- to late March). As stem elongation proceeds (jointing), PAN from cereal residues declines. By the time the flag leaf (uppermost leaf) emerges (Feekes growth stage 8 or Zadoks 37), PAN from cereal crop residue is near zero. When cereal heads are visible (Figure 2), PAN from cereals is negative.

To maximize PAN, kill cereal cover crops early, but wait until bud stage to kill legumes.

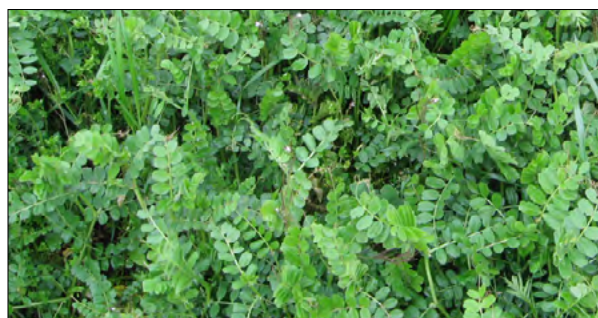


Photo by D. Sullivan

Figure 1.—Common vetch in the vegetative stage.

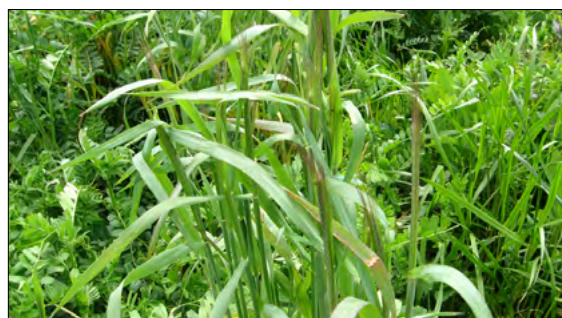


Photo by D. Sullivan

Figure 2.—This cereal rye has started to head.



In cereal/legume mixtures (Figure 3), the best crop growth stage for maximum PAN benefit depends on the percentage of legume in the stand.

- When the cover crop has mostly legume (75 percent legume line in Figure 4), it behaves much the same as does a pure legume cover crop. However, the PAN from crop residue increases until cereal boot stage (Feekes stage 10; Zadoks stage 45). After cereals reach boot stage, PAN declines.
- When a cover crop has more cereal than legume (25 percent legume line in Figure 4), it follows a similar PAN curve as a solo cereal crop, but negative PAN is usually not seen until the cereal reaches boot stage (around mid-May). A cover crop with at least 25 percent legume can be allowed to grow until early May (boot stage for cereal) without danger of N immobilization (negative PAN).

Seeding legume/cereal mixes instead of a solo cereal crop allows greater flexibility in timing of cover crop kill without consequences of negative PAN.

### Estimating PAN

Cover crop N uptake is the total amount of N present in above-ground biomass. Usually, less than half of cover crop N uptake is released as PAN during the first year after incorporation. Figure 5 shows the typical relationship between cover crop N concentration and expected PAN release. Table 2 (page 5) has the same information in a table format.

Figure 5.—Predicted PAN release from cover crops. *Instructions:* (1) Find the total N analysis of your cover crop, using either the top (%N in DM) or bottom (lb N/ton in DM) x-axis (using a commercial laboratory analysis or “typical value,” page 9). (2) PAN release predictions are made on the y-axis. Four- and 10-week predictions are estimated by incubation of cover crop residue in moist soil at 72°F (Sullivan et al., 2011). Calculator predictions are estimated by the OSU Organic Fertilizer and Cover Crop Calculator (<http://smallfarms.oregonstate.edu/calculator>).



Photo by D. Sullivan

Figure 3.—This phacelia is flowering, but the peas are in late vegetative stage.

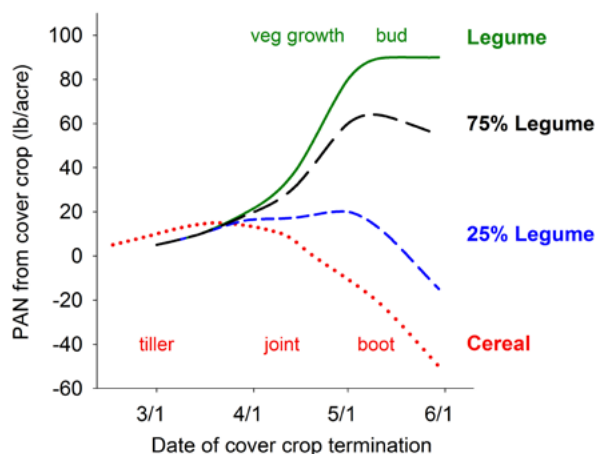
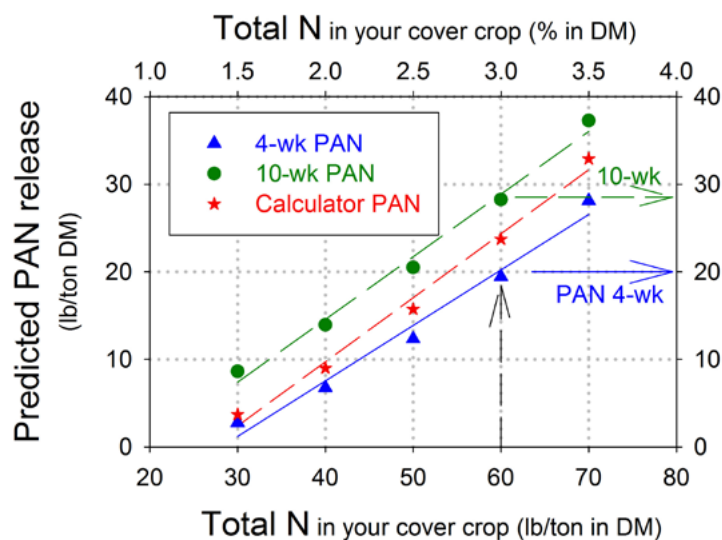


Figure 4.—Effect of kill date on typical plant-available N (PAN) release from cereal, legume, or mixed stands. Based on compilation of field data from Willamette Valley cover crop trials. Source: D. Sullivan.



**Table 2.—Predicted PAN release from cover crops.** *Instructions:* (1) Look up your cover crop N analysis in one of the left columns (use either the “%N in DM” or the “lb N/ton in DM” column). (2) PAN release predictions are made in the right columns.

Your cover crop total N <sup>1</sup>		Predicted PAN release <sup>2</sup>		
		4 weeks	10 weeks	Calculator
%N in DM	lb N/ton in DM	lb PAN/ton DM		
1.0	20	<0	0	0
1.5	30	3	9	4
2.0	40	7	14	9
2.5	50	12	20	16
3.0	60	19	28	24
3.5 <sup>3</sup>	70	28	37	33

<sup>1</sup>Total N analysis of your cover crop sample performed by a commercial laboratory or “typical value” (page 9) for the cover crop.

1% N in DM = 20 lb N/dry ton.

<sup>2</sup>PAN predictions: 4- and 10-week predictions are estimated by incubation of cover crop residue in moist soil at 72°F (Sullivan et al., 2011). Calculator predictions are estimated by the OSU Organic Fertilizer and Cover Crop Calculator (<http://smallfarms.oregonstate.edu/calculator>).

<sup>3</sup>Few cover crop samples in Oregon studies contained more than 3.5 percent N when sampled in mid-April, so 4- and 10-week PAN predictions are not available from our data. The Calculator gives predictions for higher cover crop %N.

### Example:

You sampled the cover crop using one of the harvest methods (page 7) and submitted a composite sample of the cover crop to the lab for N analysis. The cover crop biomass you measured was 2 ton DM/a, and the lab analysis was 3 percent N (60 lb N/ton DM). Using Figure 5 or Table 2, you can see that predicted PAN release from this cover crop is:

- 20 lb N/ton after 4 weeks
- 28 lb N/ton after 10 weeks

This is similar to the 24 lb N/ton predicted by the equation used in the OSU Organic Fertilizer and Cover Crop Calculator. See Appendix A (page 17) for more information on Calculator calibration.

PAN release per acre is calculated as follows:

$$\text{PAN (lb/a)} = \text{cover crop biomass (ton DM/a)} \times \text{estimated PAN (lb PAN/ton DM)}$$

$$\text{Example: } 2 \text{ ton DM/a} \times \text{Calculator prediction (24 lb PAN/ton DM)} = 48 \text{ lb PAN/a}$$

### Applicability of this guide

The field sampling approaches described to determine cover crop N uptake are applicable to a wide variety of cropping systems.

Research to support our recommendations was performed in the Willamette Valley, where cover crops are normally seeded in fall and killed

in spring prior to a summer vegetable crop (see appendices for details).

Compared to results in western Oregon, winter cover crops accumulate less N in western Washington at the same calendar date because of the cooler climate, and some popular Oregon cover crops do not survive the colder winters in western Washington.

Equations used to predict cover crop PAN in this publication (Table 2 and Figure 5) are very similar to those originally developed to predict PAN from Kansas crop residues (see Appendix A, page 17, for details). We expect a strong relationship between cover crop %N and PAN to be found in most locations. However, the timing of PAN release will differ in regions outside of western Washington and Oregon.

Crop residue decomposition rate and accompanying PAN release rate are primarily driven by soil temperature and moisture content. Decomposition proceeds two to three times faster at a soil temperature of 70°F than it does at 50°F. Decomposition proceeds most rapidly when soil is near field capacity, and it slows as soil dries.

Local research has not specifically addressed whether the method of cover crop kill (tillage, herbicide, roller-crimper, mowing) affects PAN. Research from other regions suggests that cover crop kill method does not affect the amount of PAN release, but these practices may affect the timing of PAN release.

To evaluate cover crop PAN release in novel climate/cropping/management systems, we recommend using soil nitrate testing to validate PAN release following cover crop kill. To do so, compare soil nitrate-N accumulated over time in cover crop strips versus no-cover-crop strips in the same field.

## Using a site-specific method to estimate PAN

The recommended field sampling and analysis method in this publication is based on a whole-plant above-ground sample from a specified area. The cover crop is harvested from a known area in the field, weighed wet, then subsampled. The subsamples are sent to an analytical lab for determination of cover crop biomass (dry weight) and total N percentage (%N in DM).

### Advantages of a site-specific method

- Accuracy of cover crop N “credits” is improved, and N fertilization practices can be fine tuned.
- Accuracy of this method has been documented extensively for winter cover crops harvested from March through May in the Willamette Valley.
- A site-specific method is especially useful for mixed cover crop stands.

### Cost

- Collecting and weighing four quadrat samples from a field typically requires 1 to 2 hours of labor.
- Laboratory analysis for DM and %N in DM costs \$20 to \$40 per sample.
- Additional time is required to send samples to the analytical lab, enter data, and use the Worksheet.

### Supplies needed

- A sampling frame. The frame can be any size (we use 2' x 2' frames) and can be made from metal, PVC pipe, wood, or any other readily available material.
- A scale with about 20-lb capacity and 0.1-lb accuracy

- A sharp knife or sickle (e.g., lettuce harvesting knife)
- About four large paper bags (e.g., grocery bags) for collecting samples
- A large plastic tub or bag (at least 10-gal capacity) for combining samples
- A 1-gallon zippered freezer bag for submitting the sample

### Step-by-step method

**Step 1. Select an analytical lab.** Because you will be collecting perishable cover crop samples, think about shipping details prior to sample collection. Check with your analytical lab to determine shipping options, sample packaging (paper or plastic), analysis cost, and whether the lab will grind the whole submitted sample (see step 5). We recommend working with a laboratory that will dry and grind the whole sample you submit. Grinding the whole sample prior to subsampling for analysis ensures that the lab analyzes a representative sample (a few grams at most) of your cover crop.

**Step 2. Select the cover crop sampling areas in the field (quadrats).** It is better to sample a number of representative small quadrats from different parts of the field (Figure 6) than to sample one large area. For most fields, four quadrats will give an adequate estimate of cover crop field weight and species mix. Choose sample areas that represent the species mixture and plant biomass in your field. Record the quadrat area sampled (ft<sup>2</sup>).



Photo by K. Pool

Figure 6.—Place the sampling frame in representative areas of the cover crop.





Photo by N. Andrews

Figure 7.—After working the frame to ground level, cut the plants that root inside the frame (harvest method A).



Photo by N. Andrews

Figure 8.—Harvest method A, the finished sample.



Photo by K. Pool

Figure 9.—Push the cover crop down in one direction (harvest method B).

**Step 3. Harvest the cover crop.** Cut the cover crop, leaving about an inch of stem above ground. Do not harvest small, low-growing weeds, because they typically have adhering soil. Getting soil into a cover crop sample alters its analysis, inflating DM and reducing N percentage.

The best method for harvesting quadrats depends on the type of cover crop stand. Three methods are described below. Any harvest method can be used that gives you a clean plant sample with a known harvest area.

**Harvest method A.** Short, upright cover crops can be harvested using a quadrat frame. Work the frame through the canopy to ground level. Sample plants that root within the quadrat (Figures 7 and 8).

**Harvest method B.** For tall or trailing cover crops, push down the canopy in one direction and cut through the cover crop lying on the ground (Figures 9–10).

**Harvest method C.** Use a sickle-bar mower or similar harvesting equipment to cut a cover crop strip from the field (Figure 11).



Photo by K. Pool

Figure 10.—Cut through the cover crop to sample all plants lying within the frame (harvest method B).



Photo by J. Luna

Figure 11.—Using a sickle bar mower to sample cover crops (harvest method C).



Regardless of the harvest method used, combine all of the field cover crop samples in a large bag or container. Clean plastic tubs or bags (at least 10 gal) work well. Avoid crushing or smashing the cover crop into slime. Protect samples from wilting in the sun or getting soaked by rain.

**Step 4. Weigh quadrat samples.** Weighing can be done in the field with a tarp, tripod, and hanging scale (Figure 12). When it is not convenient to weigh in the field, you may want to weigh samples under a roof on a platform scale. An accuracy of about 0.1 lb is sufficient.

**Step 5. Prepare subsample for laboratory analysis.** Place the combined field samples on a tarp or clean, flat surface and vigorously mix the sample (Figure 13). Chop or tear apart large plants. When the sample is thoroughly mixed, collect a large handful that fits loosely in a 1-gal zippered freezer bag (half full) and weighs about a pound. This is your lab sample.

It might take a couple of rounds of subsampling to reduce the field sample volume to a 1-gal lab sample volume. If you are not satisfied that you are getting a good mix of species, leaves, and stems, slice the plants into 4- to 6-inch pieces before doing the final subsampling.

**Step 6. Ship the sample to the lab for dry matter and total N analysis.** Ship the sample so that the lab receives a fresh plant sample. Ship samples with blue ice to keep plastic bags cool in transit, or ship the sample overnight. Generally, it is best to ship the sample early in the week, so it can be processed shortly after arrival.

**Step 7. Review laboratory analyses.** Tracking cover crop lab analysis values for multiple fields over 2 or 3 years will help you develop a running average that reflects your management system. After you have consistent data for 3 years of cover crops under your management, you may be able to reduce the frequency of lab analyses.

### What %N and DM are “typical”?

- Typical mid-April DM and %N for cereals and common vetch are given in the sidebar “Shortcut method” (page 9). Typical DM for phacelia, clover, and rye/vetch cover crop mixtures is shown in Appendix C (page 20).

### What range is possible?

- Cover crop N can range from less than 1 percent N in cereals after head emergence to 4 to 5 percent N in very young, leafy plants.
- DM of 10 percent can be present in young, leafy, wet cover crops such as vetch or clover. Dry matter of 20 to 25 percent is typical for cereals after head emergence.



Photo by J. Luna

Figure 12.—Weighing the field sample from all sampled quadrats.



Photo by N. Andrews

Figure 13.—Remove any soil, tear up large plants, and mix the field sample.



**Step 8. Estimate PAN using Table 2 or OSU Organic Fertilizer and Cover Crop Calculator.**

**Table 3.—Worksheet for estimating site-specific plant-available N release from cover crop.<sup>1</sup>**

Line no.		Your value	Example: Vetch	Units
1	Area sampled to determine cover crop biomass: <i>Quadrat area (ft<sup>2</sup>) x number of quadrats</i>		16	ft <sup>2</sup>
2	Number of sample areas per acre: <i>43,560 ft<sup>2</sup>/acre ÷ Line 1</i>		2,723	sample areas/acre
3	Wet weight of cover crop field sample (lb)		12	lb wet cover crop
4	Percent DM in cover crop: <i>lab data or your “shortcut” estimate<sup>2</sup></i>		15	DM, % in wet cover crop biomass
5	Calculate cover crop DM (ton/a): <i>(Line 2 x Line 3 x Line 4 ÷ 100) ÷ 2,000</i>		2.45	ton DM/acre
6	Cover crop total N percentage: <i>lab data or your “shortcut” estimate (N, % dry wt)<sup>3</sup></i>		3.0	N, % in cover crop DM
7	Plant-available N from cover crop decomposition: <i>Find your %N in DM in column 1 of Table 2 (page 5), and then find estimated PAN release under the “Calculator” column.</i>		24	PAN, lb/ton DM
8	Calculate plant-available N for summer crop <sup>4</sup> (lb PAN/acre): <i>Line 5 x Line 7</i>		59	PAN, lb/acre

<sup>1</sup>The OSU Organic Fertilizer and Cover Crop Calculator calculates PAN (Line 8) from the input data in lines 1–6.

<sup>2</sup>See sidebar “Shortcut method” and Appendix C (page 20). A closed cover crop canopy retains moisture, so cover crop dry matter is relatively consistent across sampling dates.

<sup>3</sup>See sidebar “Shortcut method.”

<sup>4</sup>Typical values for PAN are 30 to 70 lb N/a for winter cereal/legume cover crops killed in mid-April (see Case Study 5, page 15). Check your calculations if your PAN estimate (Line 7) is greater than 100 lb PAN/a. This is the maximum PAN value observed for excellent vetch cover crops allowed to grow to bud stage (total cover crop N uptake = 150 to 200 lb N/a).

## SHORTCUT METHOD

If you prefer to forego lab analysis, you can harvest and measure cover crop biomass (see steps 2–4 on pages 6–8) and use typical values for cover crop DM and %N to estimate PAN. Values below are typical for cover crops collected in mid-April in the Willamette Valley:

**Biomass dry matter:**

- Common vetch = 12 to 18 percent
- Cereals = 15 to 20 percent
- 50/50 vetch/cereal mix = 15 percent

**%N in DM:**

- Common vetch = 3 to 4 percent
- Cereals = 1.5 to 2.5 percent
- 50/50 vetch/cereal mix = 2.5 to 3 percent

The %N in cereals varies with field history. Fields that have a history of manure/compost application and/or legumes in rotation have higher %N in cereal than do fields with history of only mineral N fertilizer application.

We always recommend cutting and weighing cover crop biomass to estimate PAN. Visual estimates of cover crop biomass are not very accurate, especially for multi-species cover crop mixes.

## Case Study 1. Cover crop growth: Is bigger always better?

### Situation

May can be rainy in the Willamette Valley, sometimes delaying cover crop kill by several weeks. Data shown below came from a field where cover crops were ready for killing in early May. Because of weather delays, however, the cover crop wasn't killed until late May.

### Question

What is the effect on PAN of delaying cover crop kill until late May?

### Method

Cover crop samples were collected on May 5 and May 27 from the same field, and N concentration in the harvested biomass was measured (lb N/ton DM). Crop biomass (lb/a) increased by about 10 to 20 percent between cover crop sample dates.

PAN was determined via incubation of cover crop samples in moist soil in the laboratory.

Nitrate-N accumulated in soil was measured after 4 and 10 weeks of incubation at 72°F.

### Results

Delaying cover crop incorporation until late May increased N immobilization (negative PAN) for phacelia and cereal rye. Late May incorporation of legume cover crops also reduced PAN substantially (Figure 14).

### Recommendation

To get the most PAN value from cover crops, we recommend they be killed during the late vegetative growth stage. In western Oregon, this is often the first window of dry weather after about April 15 (about 2 weeks before bud stage for legumes or boot stage for cereals). The PAN penalty for delaying cover crop kill past bud/boot stage (about May 1) is most severe for cereal cover crops.

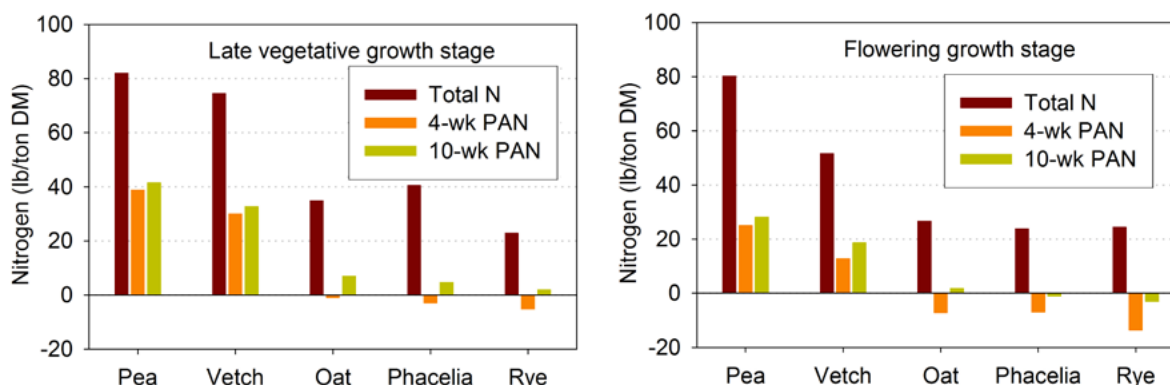


Figure 14.—Delaying cover crop incorporation until late May reduces PAN. Above-ground biomass was harvested on May 5 (left) or May 27 (right) from the same field in the northern Willamette Valley.

## Case Study 2. Soil testing for nitrate-N to track PAN

If you don't estimate cover crop PAN by following the method described in this publication, you can use soil sampling to estimate the cumulative effects of the cover crop and soil organic matter on N fertilizer needs.

Most of the PAN released by a cover crop is present in the soil by about 6 weeks after incorporation. Thus, early-season (May/June) soil nitrate sampling can be used to assess N supply for a summer vegetable crop.

Soil nitrate-N above 30 ppm (0- to 12-inch depth) just prior to rapid vegetative summer

crop growth is usually sufficient to meet yield goals for vegetable crops (Figure 15). When midseason soil nitrate-N is low, summer vegetable crops may respond strongly to PAN from a winter cover crop (Figure 16). In-season soil nitrate sampling can be used to assess PAN supply in both organic and conventional cropping systems. See the OSU [Nutrient Management Guide for Sweet Corn \(Western Oregon\)](#), EM 9010-E, for more details.



Photo by N. Andrews

Figure 15.—Lettuce growth did not increase with additional N fertilizer when midseason soil nitrate-N was above 30 ppm. Lettuce field had small plots receiving 0 to 200 lb PAN/acre, but all plants looked the same.



Photo by N. Andrews

Figure 16.—Table beet growth responded strongly to PAN from a winter legume cover crop (upper half of photo) when midseason soil nitrate-N was low (less than 10 ppm nitrate-N).



## Case Study 3. Replacing organic fertilizer N with PAN from cover crops

### Situation

From the farmer's viewpoint, the most useful estimate of PAN release from cover crops is a direct field comparison with N fertilizer.

Field research to estimate PAN contributed by winter cover crops has been conducted by OSU faculty at on-farm and experiment station fields. Most of the trials used sweet corn as the test crop and compared PAN from cover crops to inorganic N fertilizer. The amount of inorganic N fertilizer replaced by a typical legume or legume/cereal cover crop (grown to mid-April) was 50 to 100 lb/a.

### Question

What is the organic N fertilizer replacement value of vetch and oat winter cover crops?

### Method

We present data from a recent trial with organically grown broccoli (Garrett, 2009) to illustrate the field research approach. This trial was performed with an organic fertilizer, feather meal (12-0-0) as the "grower standard" organic fertilizer.

Winter cover crops (oat, common vetch, or no cover crop) were seeded October 3, 2006 and incorporated by tillage May 12, 2007 when cover crops were flowering (Figures 17–19). Three weeks after cover crop incorporation, broccoli was transplanted into the field. Just prior to transplanting, feather meal was applied in rows at rates of 0, 90, 180, and 270 lb feather meal N/a (0 to 2,250 lb feather meal/a). Broccoli was harvested from August 17 through August 30.

Without a cover crop, broccoli yield increased up to a feather meal rate of 270 lb N/a. To determine the organic fertilizer N replacement value of cover crops, N response curves with and without the cover crop were compared (Figure 20, page 13).

*Case Study 3 continues on page 13*



Photo by J. Luna

Figure 17.—Common vetch (left) and phacelia cover crop (right) in May 2006. Source: Garrett (2009).



Photo by J. Luna

Figure 18.—Flail-mowing of cover crops prior to tillage.



Photo by J. Luna

Figure 19.—Tillage to incorporate cover crop residue using a power spader.

## Case Study 3, continued

### Results

The common vetch cover crop (biomass = 4,800 lb DM/a; N uptake = 120 lb/a) replaced about 110 lb feather meal N per acre (Figure 20, left).

The oat cover crop (biomass = 7,050 lb DM/a; N uptake = 40 lb/a) increased N fertilizer need. An extra 50 lb feather meal N/a was needed to compensate for PAN immobilized by oat decomposition (Figure 20, right).

In this trial, PAN release from the vetch cover crop occurred earlier than did PAN release from feather meal, because cover crops were tilled into soil several weeks prior to the feather meal application. The earlier release of PAN from vetch was important in this trial because background soil nitrate-N (without fertilizer or cover crop) was very low (less than 10 ppm nitrate-N at transplanting).

Soil nitrate-N testing, performed 5 weeks after transplanting, showed an extra

45 lb PAN/a with vetch versus no cover crop. The OSU Calculator prediction for PAN from vetch cover crop in this scenario was 35 lb/a. Therefore, PAN from vetch observed in this trial was similar to OSU Calculator predictions.

### Recommendations

Oat, as grown in this trial (to boot stage) increased N fertilizer need, while vetch (flowering growth stage) reduced N fertilizer need. To overcome N immobilization by oat, we recommend earlier kill of the solo oat cover crop, or seeding of oat with a legume.

Cover crop N from vetch had a high value in the context of this organic farming trial. Feather meal PAN costs about \$5 to \$6/lb, so the fertilizer cost was reduced by more than \$500/a with a vetch cover crop.

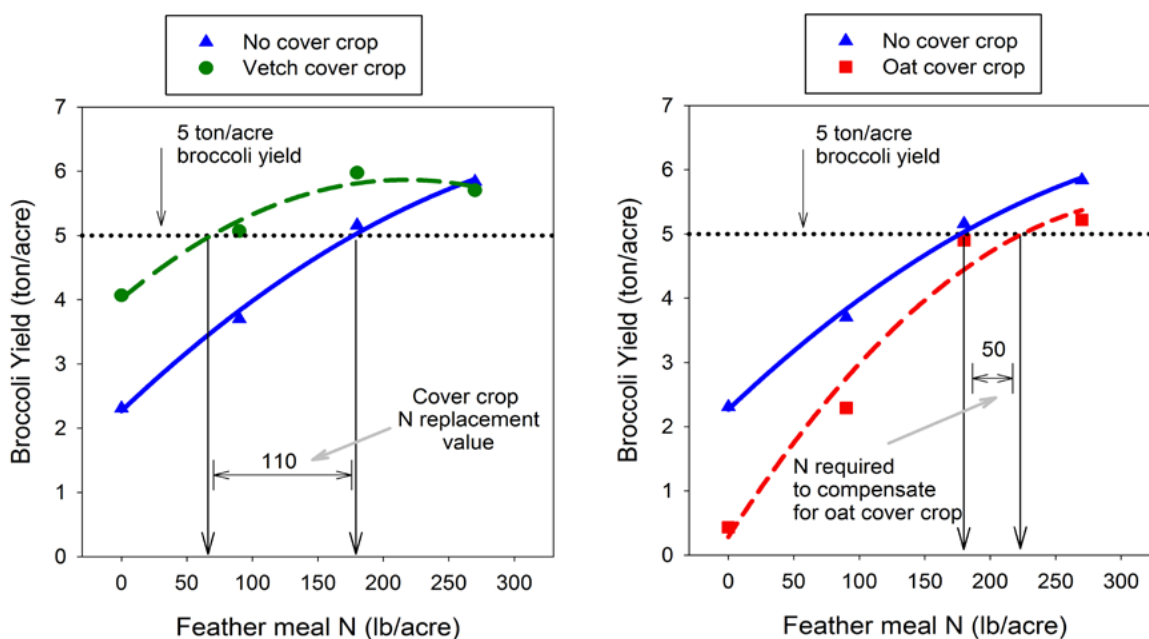


Figure 20.—A vetch cover crop reduces the N requirement for broccoli (left). An oat cover crop increases N required for broccoli (right). Fertilizer equivalency is estimated at a broccoli yield of 5 ton/a.

## Case Study 4. Does it pay? Comparing cover crop PAN versus other N inputs using the OSU Calculator

### Situation

Legume cover crops can provide a cost-effective source of PAN. The OSU Organic Fertilizer and Cover Crop Calculator can be used to compare the dollar value of N supplied via cover crops with the cost of other N inputs (inorganic fertilizer, compost, manure, or specialty organic fertilizers).

For any source of N input, the Calculator estimates cost per lb PAN, including management costs. When a winter cover crop produces typical PAN (40 to 70 lb PAN/a), the cost of cover crop PAN is usually \$2 to \$3/lb.

Legume cover crops are typically a more economical source of PAN than are common specialty organic fertilizers such as pelleted feather meal, fish meal, or chicken manure. Cover crop N is typically more expensive than N supplied by inorganic N fertilizers such as urea or UAN solution (urea-ammonium nitrate; 32-0-0) that are used in conventional production systems.

### Question

How does the cost of cover crop PAN compare to the cost of organic fertilizer PAN?

### Method

Costs used in the example reflect typical values for a small-acreage farm producing organic broccoli in a 30-acre field with a medium-size tractor (70 hp) and implements in 2011.

### Results

This case study shows that cover crop N is less expensive than N supplied by specialty organic fertilizer (feather meal). With a typical vetch cover crop (2.5 ton DM/a and 60 lb PAN/a), PAN costs about \$2.30/lb, as compared to more than \$5/lb for PAN from feather meal.

## Comparison of cost of PAN from cover crop and feather meal

### Cost of PAN from cover crop (\$2.33/lb)

Cost/lb for cover crop PAN (\$2.33/lb) = cover crop expense/a (\$140/a) ÷ cover crop PAN/a (60 lb/a)

#### Assumptions

*Expense for cover crop establishment and kill = \$140/a (assigns all cost of cover crop to PAN)*

Fall: Common vetch seed + inoculum (\$50/a) + drilling seed + one irrigation (\$45/a)

Spring: Flail mowing, plowing, and discing to incorporate cover crop (\$45/a)

*PAN from cover crop = 60 lb/a*

Vetch cover crop N uptake (150 lb N/a) = 2.5 ton DM/a @ 3% total N in DM

PAN estimate (60 lb/a) = 2.5 ton DM/a x 24 lb PAN/ton DM

### Cost of PAN from feather meal (\$5.80/lb)

Cost/lb PAN (\$5.80/lb) = product cost/a (\$335/a) + application cost/a (\$15/a) ÷ 60 lb PAN

#### Assumptions (to supply 60 lb PAN/a)

Product cost = \$1,000/ton. Complies with USDA Organic Standard

Guaranteed analysis = 12% total N

Estimated PAN% (OSU Calculator) = 9% PAN (75% of total N; 0.75 x 12)

Product rate needed = 60 lb PAN/a x 100 lb product ÷ 9 lb PAN (PAN is 9% of product wt)

= 60 x 11.1 = 670 lb product



## Case Study 5. Comparing PAN from solo vetch versus mixtures

### Situation

Both cereals and legumes provide benefits as a cover crop. Although legumes typically provide more PAN than cereals, adding cereals to a cover crop mix may increase the overall benefit of the cover crop.

### Question

Is it more beneficial to seed vetch alone, or with a companion crop?

### Methods

On-farm research was conducted at northern Willamette Valley farms in 2009 and 2010 to evaluate a solo vetch cover crop versus species mixtures (cereal rye + common vetch or phacelia + common vetch). The PAN evaluation (reported here) was a part of a broader evaluation of cover crop benefits.

Cover crops were seeded in September or early October. If needed, fields were irrigated to provide moisture to the seedbed. Vetch was seeded at 60 lb/a in mixtures and 70 lb/a solo. Seeding rates of the vetch companion crop (rye at 30 lb seed/a or phacelia at 3 lb seed/a) were low enough to allow successful vetch establishment in the fall (Figure 21).

In spring, cover crop biomass was determined using the site-specific quadrat method (Table 3, page 9). Spring cover crop samples were collected April 9 to 30, 2009 and April 15 to May 7, 2010.

Plant-available N (PAN) was determined by incubating chopped cover crop residue in moist soil (20 to 25 percent gravimetric moisture) at 72°F in the laboratory (Figure 22).

### Results

**Cover crop performance.** Cereal rye was a dependable companion to vetch, establishing a stand at all locations. Phacelia established well in the fall, but it winter-killed in four of seven fields, partially smothering the vetch.



Photo by D. Sullivan

Figure 21.—A mixed stand of cereal rye and common vetch at the mid-vegetative stage.



Photo by D. Sullivan

Figure 22.—Cover crop residue prepared at the laboratory for incubation.

Total biomass was similar (3,300 lb DM/a) for solo vetch and phacelia + vetch cover crops. Biomass for rye + vetch was higher on average, at 4,800 lb DM/a.

When seeded alone, vetch accounted for 65 to 70 percent of total cover crop biomass, with weeds accounting for the balance. When seeded with rye, vetch averaged 35 percent of total biomass. Vetch biomass was more variable when seeded with phacelia. Weed biomass was lowest with rye + vetch.

*Case study 5 continues on page 16*

## Case Study 5, continued

**PAN from cover crops.** Results are shown in Figure 23.

- Nitrogen concentration in cover crops averaged 3 percent N for solo vetch, 2.4 percent N for rye + vetch, and 2.8 percent N for phacelia + vetch.
- Plant-available N released from cover crop residues was similar for solo vetch or mixtures (40 to 70 lb PAN/a after 10 weeks).

### Conclusions

- When cover crops are killed in mid-April, mixtures of vetch with rye or phacelia may provide additional benefits (soil erosion protection, weed control) without sacrificing PAN.
- Rye was a more dependable companion crop for vetch than was phacelia.

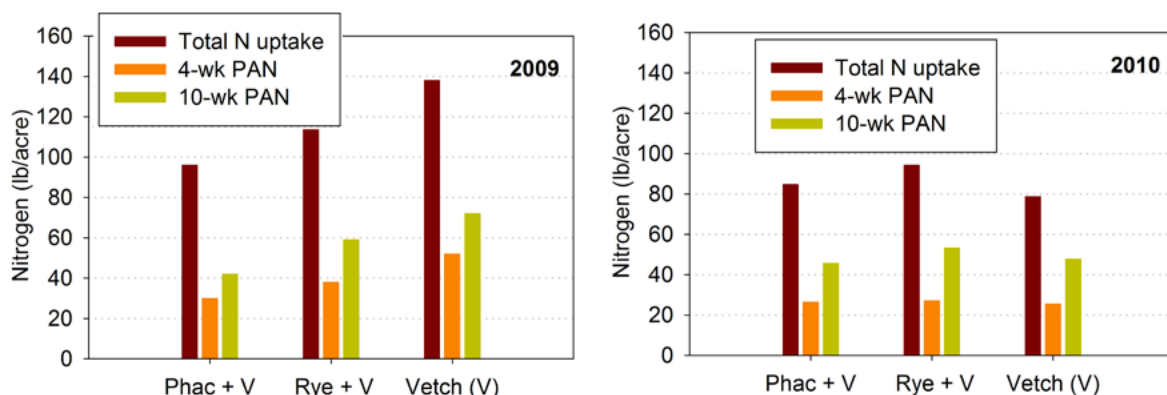


Figure 23.—In 2009, cover crop N uptake ranged from 80 to 140 lb N/a when vetch-dominated cover crop mixtures were killed at a vegetative growth stage in mid-April in the northern Willamette Valley (left). Plant-available N (PAN) ranged from 40 to 70 lb/a. Values for both N uptake and PAN were lower in 2010 (right). Values shown are the average of four field experiments in 2009 and three experiments in 2010. Source: N. Andrews, K. Pool, D.M. Sullivan, and R. Datta (Western SARE project FW09-328).

## Appendix A

### Cover crop incubations to validate OSU Calculator PAN estimates

#### Situation

A published regression equation (Vigil and Kissel, 1991) was developed for predicting PAN across a variety of crop residues in Kansas:

$$\text{PAN (\% of cover crop total N)} = -53.44 + 16.98 (\text{cover crop \%N} \times 10)^{1/2}$$

#### Question

How well does this regression equation predict PAN for Willamette Valley winter cover crop samples?

#### Method

About 50 cover crop samples were collected each spring (2008, 2009, and 2010) from field plots in the Willamette Valley using the site-specific method (see “Using a site-specific method to estimate PAN,” page 6).

Samples were chopped and mixed with moist silt loam or sandy loam soil (Figure 24). Plant-available nitrate-N (PAN) accumulation was measured after 4 and 10 weeks of incubation at 72°F.

PAN (%) was calculated as:

$$(\text{PAN for cover crop + soil} - \text{PAN for soil alone}) \div \text{cover crop N added} \times 100$$

*Appendix A continues on page 18*

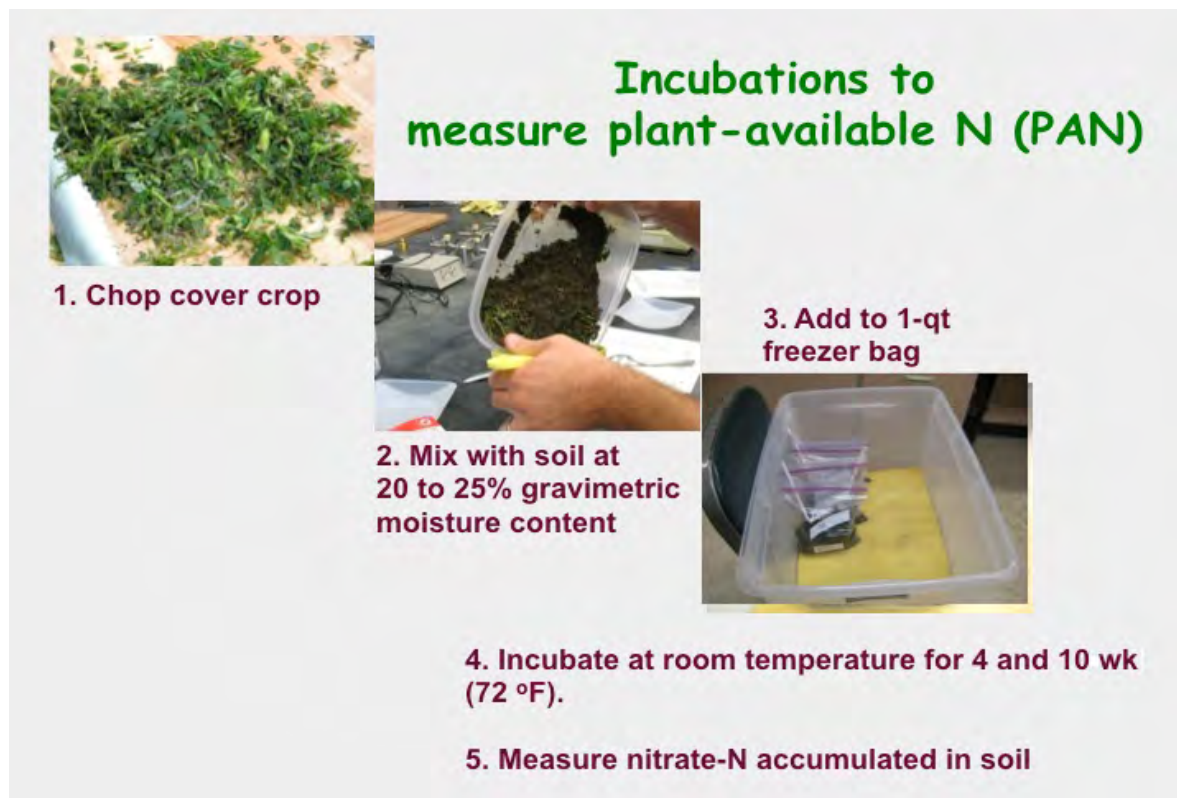


Figure 24.—Incubation method used to measure PAN. Source: D. Sullivan.



## Appendix A, continued

### Results

Results are shown in Figure 25. As predicted by the Calculator prediction equation, PAN measured via incubation (y-axis, Figure 25) increased with total N in cover crop DM (x-axis).

Most of the PAN was released from cover crops in the first 4 weeks. Measured PAN values were equal to, or lower than, PAN predicted by the Calculator at 4 weeks. After 10 weeks, measured PAN exceeded Calculator predictions. The 4- and 10-week PAN values determined from these incubations were used to develop the linear PAN predictions for “typical” cover crops in Figure 5 and Table 2 (pages 4 and 5). The range in observed PAN at the same cover crop N percentage was about 5 lb PAN/ton DM at 4 weeks and 10 lb/ton DM at 10 weeks (Figure 25).

Because we had cover crops with low N concentration (20 to 40 lb N/ton cover crop DM) in only a few incubations, we do not show that data here. The Kansas regression equation performed adequately for cover crops with low N concentration (Case Study 5 and Appendix B). PAN predictions for low-N cover crops are included in Table 2 and Figure 5.

Our cover crop incubation results are plotted versus a linear form of the Kansas prediction equation in Figure 25. Total N in cover crop (x-axis) was changed from “% total N in cover crop” (Kansas equation) to “lb N/ton in cover crop DM.” Units on the y-axis were changed from “N mineralized, % of cover crop total N” to “PAN, lb/ton cover crop DM.” We

made these unit changes to make the prediction equation more user friendly. A side benefit of the unit change was that the prediction line (Figure 25) became nearly linear, instead of curvilinear (as in the Kansas equation) when cover crop N is 40 to 75 lb/ton DM.

Additional details on validation of the cover crop equation used in the OSU Cover Crop and Organic Fertilizer Calculator can be found in Sullivan et al. (2011).

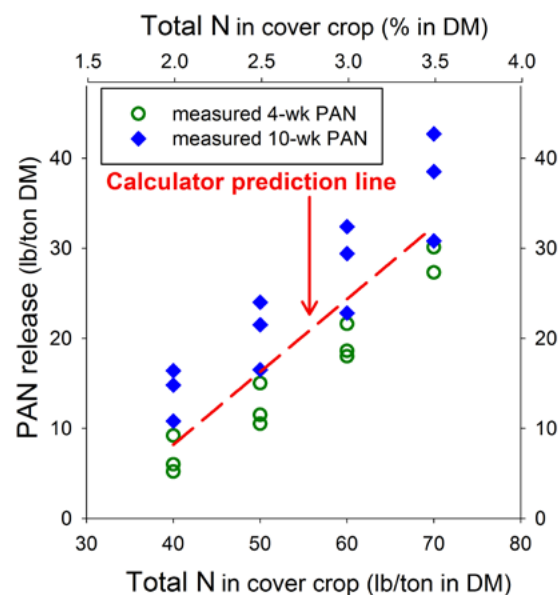


Figure 25.—Plant-available N (PAN) measured in cover crop incubations compared to PAN predicted by the equation used in the OSU Calculator. Variation shown (y-axis) represents measured PAN for cover crop incubations performed in different years (2008, 2009, or 2010). Source: Sullivan et al., 2011.

## Appendix B

### Using cover crop total N percentage to predict PAN

#### Situation

In this publication, we use cover crop %N as a predictor of PAN release (Figure 5 and Table 2 on pages 4 and 5). Many other publications use the C:N ratio as a predictor of cover crop PAN. However, because most cover crops contain 40 percent C in DM, the C:N ratio is usually just an indirect way to express crop N percentage. We find %N to be a more useful index of PAN because it yields a linear relationship with PAN, instead of the curvilinear relationship found using C:N ratio.

#### Question

How do PAN predictions using %N compare to those using C:N ratio?

#### Method

We collected crop residues from a field site in the northern Willamette Valley on May 5, 2008. To estimate PAN, we added cover crop residues to moist soil for 4 or 10 weeks at 72°F and then measured the accumulated soil nitrate-N.

#### Results

In Figure 26, cover crop total N (top graph) or C:N ratio (bottom graph) is plotted versus measured PAN for the same cover crop samples. PAN increased with cover crop N percentage (top), and it decreased with cover crop C:N (bottom). The linear relationship observed with %N as the predictor of PAN (top) is easier to interpret than the exponential relationship of C:N versus PAN (bottom). “Break-even” or zero PAN at 4 weeks was observed when cover crop N concentration values were 1.7 percent N (top) or when C:N was 24:1 (bottom).

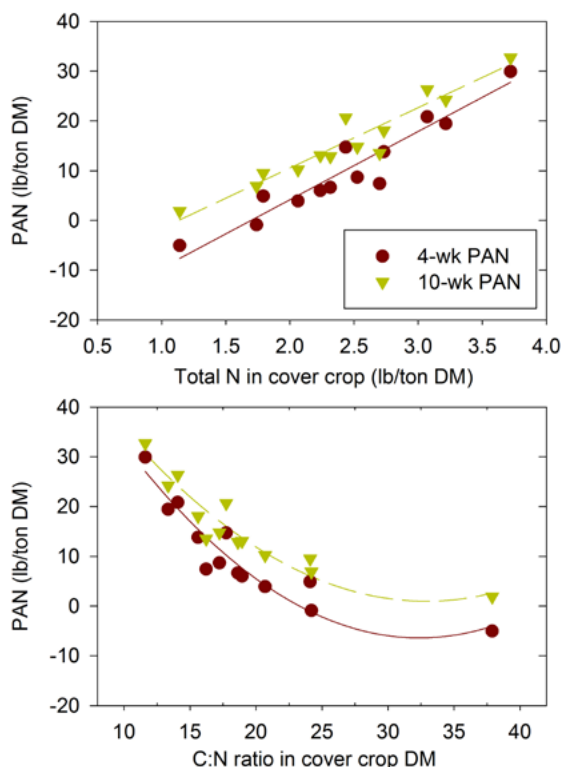


Figure 26.—PAN from cover crop residues (oat + vetch, rye + vetch, and oat + clover) as related to N percentage in cover crop DM (top) or C:N ratio (bottom).

## Appendix C

### Typical cover crop dry matter percentages

#### Situation

Dry matter (DM) is one of the measurements needed to estimate site-specific PAN using our worksheet (Table 3, page 9).

#### Question

How variable is cover crop dry matter among cover crop species and sampling times?

#### Method

Dry matter percentage in cover crop samples from grower fields in the northern Willamette Valley was determined in 2008–2010.

Cover crop samples were collected using one of the site-specific methods (Method A or B, page 7). More than 50 samples were collected each spring from grower fields just prior to the time of cover crop kill (mid-April to early May). Cereals were in the stem elongation growth stage (April) or near boot stage

(early May). Other species were vegetative (April) or starting to flower (early May).

#### Results

Cover crop DM ranged from 10 to 22 percent, with most samples having 13 to 18 percent DM. Clover had the lowest DM, and cereals and phacelia had the highest DM.

#### Conclusion

Dry matter values shown in Table 4 can be used to evaluate whether your values for cover crop dry matter (Table 3, page 9) are “typical.” These values can also be used as rough estimates when cover crop DM is not measured.

The range in DM found in cover crop samples can be large (10 to 22 percent). Site-specific DM measurement is recommended to improve the accuracy of your PAN estimate.

**Table 4.—Dry matter percentage (DM%) in cover crop biomass harvested at vegetative growth stage (mid- to late April), northern Willamette Valley, OR.<sup>1,2</sup>**

Year	Cover crop	Number of fields	DM%	DM%
		Single species	range	mean
2008	Cereal (oat, rye, or triticale)	4	16–20	18
	Clover	4	10–12	11
	Phacelia	2	17–22	19
	Common vetch	4	13–17	15
		<b>Mixtures</b>		
2009	Phacelia + common vetch	4	12–17	15
	Rye + common vetch	4	14–16	15
	Common vetch	4	12–16	14
2010	Phacelia + common vetch	3	15	15
	Rye + common vetch	3	13–19	15
	Common vetch	3	13–19	15

<sup>1</sup>Data Source: Nick Andrews (PI): WSARE project FW06-301 and FW09-328.

<sup>2</sup>Winter cover crop biomass collected April 16 to May 5, 2008; April 9 to 30, 2009; and April 15 to May 7, 2010. Average biomass yield = 3,800 lb DM/a.



## Appendix D

### Crop N uptake from diverse legume and non-legume cover crops

#### Situation

A wide variety of cover crop species is available. Growers would benefit from knowing the typical performance of these species.

#### Question

How do various cover crop species compare in DM accumulation, N uptake, and N concentration?

#### Method

Winter cover crops were evaluated for N uptake in field trials conducted in the mid-Willamette Valley from 1992–1995. Cover crops were seeded in September, then irrigated after seeding. Nitrogen uptake by cover crops was determined in mid-April.

#### Results

A major factor affecting cover crop biomass and N uptake was the winter hardiness of cover crop species. Crimson clover and the vetches were the most consistent legumes in terms of growth and N uptake. Winter wheat and cereal rye were the most dependable cereal cover crops.

Cereal N uptake was 40 to 70 lb N/a (0.8 to 1.2 percent N in DM), demonstrating that cereal cover crops can recover soil N that would otherwise be leached during winter months. Legume N uptake and fixation was 100 to 150 lb N/a (2 to 3 percent N in DM) for most species.

**Table 5.—Dry matter and N accumulation by winter cover crops in the mid-Willamette Valley, 1992–1995.<sup>1,2</sup>**

Cover crop	4-year average		
	Dry matter ton DM/a	N uptake lb/a	N concentration % in DM
<b>Non-legume</b>			
<i>Humas</i> rapeseed	2.5	60	1.2
<i>Micah</i> barley	1.6	50	1.6
Annual ryegrass <sup>3</sup>	2.6	40	0.8
<i>Monida</i> oats	2.7	50	0.9
<i>Stephens</i> winter wheat	2.7	60	1.1
<i>Wheeler</i> cereal rye	3.3	70	1.1
<i>Juan</i> triticale	3.6	60	0.8
<b>Legume</b>			
Fava bell bean	1.4	60	2.1
Austrian winter pea	2.0	120	3.0
<i>Kenland</i> red clover	2.1	100	2.4
<i>Woolypod Lana</i> vetch	2.2	150	3.4
<i>Karridale</i> subclover <sup>3</sup>	2.4	120	2.5
Hairy vetch	2.5	150	3.0
<i>Common Dixie</i> crimson clover	3.2	120	1.9

<sup>1</sup>Adapted from: Sattell et al., 1999, OSU Extension Service publication EM 8739.

<sup>2</sup>Cover crops were seeded in mid-September and irrigated after seeding. Dry matter and crop N uptake were measured in mid-April of the following year.

<sup>3</sup>Three-year average, 1993–1995.

## For more information

- Andrews, N. and D. Sullivan. 2010. Organic Fertilizer and Cover Crop Calculator. Oregon State University Extension Service. <http://smallfarms.oregonstate.edu/calculator>
- Burket, J., D. Hemphill, and R. Dick. 1997. Winter cover crops and nitrogen management in sweet corn and broccoli rotations. *HortScience* 32:664–668.
- Burket, J., J. Sandeno, D. Hemphill, and R. Dick. 2003. Cover Crop Nitrogen for Summer Vegetable Crops. Oregon State University Extension Service. EM 8803-E. <http://ir.library.oregonstate.edu/xmlui/handle/1957/20217>
- Clark, A. (ed.). 2007. Managing Cover Crops Profitably (3rd edition). Handbook Series Book 9. <http://www.sare.org/publications/covercrops/covercrops.pdf>
- Cogger, C., A. Bary, and L. Myhre. 2008. Organic Cover Crop Research at WSU Puyallup. Washington State University Puyallup Research and Extension Center. <http://www.puyallup.wsu.edu/soilmgmt>
- Garrett, A. 2009. Improving nitrogen management with cover crops in organic broccoli production. M.S. thesis. Oregon State University, Corvallis, OR. <http://hdl.handle.net/1957/12109>
- Hart, J., D. Sullivan, J. Myers, and R. Peachey. 2010. Nutrient Management Guide for Sweet Corn (Western Oregon). Oregon State University Extension Service. EM 9010-E. <http://ir.library.oregonstate.edu/xmlui/bitstream/handle/1957/19064/em9010.pdf>
- Kuo, S., U. Sainju, and E. Jellum. 1997. Winter cover cropping influence on nitrogen in soil. *Soil Sci. Soc. Am. J.* 61:1392–1399.
- Lawson, A., A. Fortuna, C. Cogger, A. Bary, and T. Stubbs. 2012. Nitrogen contribution of ryegrass hairy vetch cover crop mixtures to organically grown sweet corn. *Renewable Agriculture and Food Systems*. <http://dx.doi.org/10.1017/S1742170512000014>. Also available from authors at <http://www.puyallup.wsu.edu/soilmgmt>
- Sattell R., T. Buford, H. Murray, R. Dick, and D. McGrath. 1999. Cover Crop Dry Matter and Nitrogen Accumulation in Western Oregon. Oregon State University Extension Service. EM 8739. <http://hdl.handle.net/1957/15719>
- Sattell, R. (ed.). 1998. Using Cover Crops in Oregon. Oregon State University Extension Service. EM 8704. <http://hdl.handle.net/1957/24506>
- Smith, R., R. Bugg, and M. Gaskell. 2011. Cover Cropping for Vegetable Production. University of California. Publication 3517. ISBN-13: 978-1-60107-679-3.
- Sullivan, D., R. Datta, N. Andrews, and K. Pool. 2011. Predicting plant-available nitrogen release from cover crop residues. In: Proc. Western Nutrient Management Conference, 3–4 March 2011, Reno, NV, pp. 55–60. International Plant Nutrition Institute, Brookings, SD.
- Vigil, M. and D. Kissel. 1991. Equations for estimating the amount of nitrogen mineralized from crop residues. *Soil Sci. Soc. Am. J.* 55:757–761.

## Research on which this guide is based

### Oregon

**1990s.** Richard Dick and graduate students (Burket, Sattell, and others) conducted cover cropping trials in the Willamette Valley and investigated the N contributions of cover crops to summer vegetables. Some of this research was reported in OSU Extension publications [EM 8803-E](#) and [EM 8739](#).

**1993–2009.** John Luna conducted on-farm cover crop research with Willamette Valley vegetable growers. Findings were published in reports to the Oregon Processed Vegetable Commission. Luna and graduate student Amy Garrett conducted field trials to study N management in organic broccoli using legume and non-legume cover crops in 2007–2008, publishing results in Garrett's M.S. thesis.

**2007–2011.** Nick Andrews and Dan Sullivan conducted lab and field research to estimate PAN from cover crops. Field trials were maintained by Kristin Pool, and lab incubations were conducted by graduate student RonJon Datta. Key data from those trials are reported in appendices of this publication. Data from this research were used to support development of cover crop PAN predictions within the OSU Organic Fertilizer and Cover Crop Calculator.

### Washington

**1990s.** Shiou Kuo and collaborators conducted trials at Mt. Vernon and Puyallup evaluating winter cover crops. A number of research articles were published by Kuo and collaborators on cover crop effects on soil quality and N.

**2000s.** Craig Cogger and collaborators conducted trials at Puyallup and other locations in western Washington to evaluate cover crops in the context of organic cropping systems. Publications by that group are found at <http://www.puyallup.wsu.edu/soilmgmt>

### Acknowledgments

We appreciate careful and thoughtful review comments from Scott Latham, Sauvie Island Organics; David Brown, Mustard Seed Farms; Lee Ko, NRCS-Clackamas County; Craig Cogger and Doug Collins, WSU-Puyallup; Dean Moberg, NRCS-Washington County; John Luna and Amy Garrett, OSU; and Kristin Pool, Morgan Curtis, John Yeo, and Sarah Wright, OSU graduate research assistants.

We are also grateful to the farmers who hosted our cover crop trials, including David Brown, Mustard Seed Farms; Scott Latham and Shari Raider, Sauvie Island Organics; Joe Siri, Siri & Son Farms; Jim Bronec, Praying Mantis Farm; Jeff Boden, West Union Gardens; Anthony Boutard, Ayer's Creek Farm; Laura Masterson, 47th Avenue Farm; and Jim Hinsvark, Hinsvark Farm.

Financial support for cover crop trials (2007–2011) was provided by grants from Western Sustainable Agriculture Research and Education, a partnership with Oregon Tilth, Inc., and the Oregon Organic Cropping Research Special Grant (USDA-NIFA).

---

All photographs in this publication © Oregon State University.

© 2012 Oregon State University.

Published and distributed in furtherance of the Acts of Congress of May 8 and June 30, 1914, by the Oregon State University Extension Service, Washington State University Extension, University of Idaho Extension, and the U.S. Department of Agriculture cooperating.

The three participating Extension services offer educational programs, activities, and materials without discrimination based on age, color, disability, gender identity or expression, marital status, national origin, race, religion, sex, sexual orientation, or veteran's status. The Oregon State University Extension Service, Washington State University Extension, and University of Idaho Extension are Equal Opportunity Employers.

---

Published November 2012.