

UNIVERSITY OF CALIFORNIA COOPERATIVE EXTENSION GLENN COUNTY 2017 ANNUAL REPORT

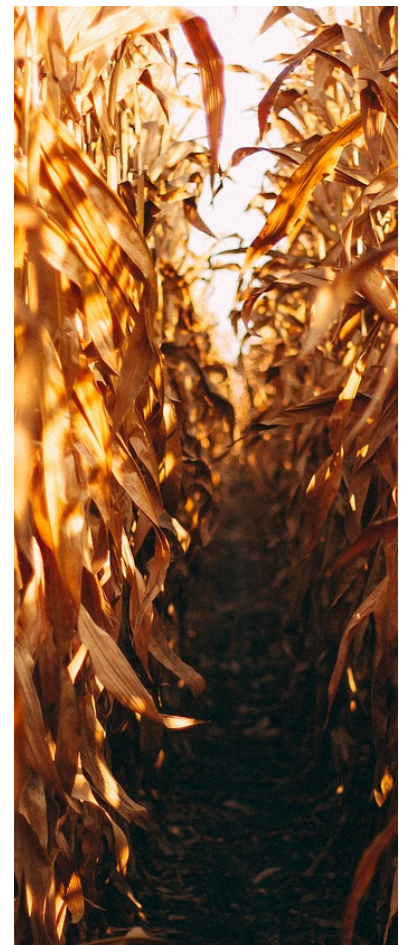
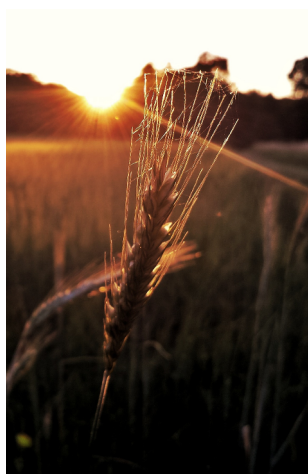






Table of Contents

Message from the Director.....	4
UCCE History.....	5
Progress Report.....	6
Advisors.....	7
4-H Youth Development Program	10
Master Gardener.....	11
Resources & Financial Management Report.....	12
Special Thanks.....	13
Board of Supervisors.....	14



The University of California Cooperative Extension (UCCE) is dedicated to improving the quality of life for Californians by developing and delivering research-based information in agriculture and natural resources, and by supporting healthy families and communities.



Message from the Director



Dear Friends,

The University of California Cooperative Extension (UCCE) was established in Glenn County in 1915. We provide education, outreach and research activities to the County. Nestled within the Division of Agriculture and Natural Resources, UC Cooperative Extension is best described as a vast network of UC researchers and educators. In return for University work in our community, the County provides support to UCCE including administrative staff, facilities, transportation, utilities, and other support.

We owe a debt of gratitude to the Glenn County Board of Supervisors for their steadfast support of our office and our programs. We are here to serve all residents of the county and base our programs and research on local needs. Our work would not be possible without the hundreds of volunteers who extend our reach through the Master Gardener Program

and the 4-H Youth Development Program. Our local partners are integral to our success: we can further leverage our resources by working with partners like the Natural Resources Conservation Service, the Resource Conservation District and the Farm Bureau. Our locally relevant applied research would be impossible without the collaboration of dozens of forward thinking and innovative farmer cooperators. The insight from these leaders within our food production systems is essential to conduct our problem-solving research. We would not be able to offer our programs at little or no cost to our community without the support of our private donors. We sincerely thank each and every individual and business who has invested in our future!

Looking forward to a bright future here in Glenn County!

Betsy Karle
County Director

May 2014 marked the 100th anniversary of the Smith-Lever Act, legislation that created Cooperative Extension, a nationwide system of community-based education. CE Offices were created to help farmers, homemakers, and youth use the latest university research to improve their lives. At first geared towards strengthening rural areas, A century later, CE continues to provide a vital link between public universities and communities.

1896- BIRTH OF COLLEGE EXTENSION

California farmers had already called for the separation of University and Agricultural Colleges, just a few years prior. Cornell University listened to their cooperators and took it one step further by establishing an "Extension Program" at the request of grape growers.

1907- BIRTH OF 4-H CLUBS

The USDA sponsored the first Boys and Girls AG Clubs. The symbol of the three-leaf clover was established (head, heart, hands) then, in 1911, "health" was added therefore creating the official 4-H name.

1913- FIRST FARM ADVISOR

The first California Farm Advisor was hired (Humboldt Dairy Farms), quickly followed with Advisors in San Diego, San Joaquin, and Yolo Counties. Glenn Co was soon to follow in 1915.

1914- SMITH-LEVER ACT

Congress passed the Smith-Lever Act to fund nationwide Extension work. Funds were allocated for cooperative administration of agricultural education by USDA and state land-grant colleges with a mission of increasing productivity and improvement of rural life. This act more than matched local funds for Extension programs like 4-H, home economics, community development, and farm.

TODAY-WHO WE ARE NOW

Today, the UCCCE continues to serve communities through California as part of the University of California's Division of Agriculture and Natural Resources (UC ANR), with 246 locally based Cooperative Extension Advisors, 130 campus-based CE specialists, 57 county offices and nine research and extension centers.

In addition to addressing the needs of farmers, UCCE expanded to provide educational opportunities for their families, including programs for nutrition, food preservation and activities for local youth, through 4-H programs. Over more than a century of service, Cooperative Extension has continued to connect communities with the land grant campuses, bringing practical, trusted, science-based solutions to Californians.

UCCE History



Progress Report



In this 2017 Annual Progress Report, we offer a snapshot of our positive impacts on families, communities and local businesses.

For over 100 years, Cooperative Extension has maintained a strong and unique partnership with Glenn County government, linking our residents to the world-class research and intellectual knowledge of the University of California, California's land-grant university and a world renowned institution.

Our professional Advisors and staff, along with a corp of over 150 volunteers, actively and diligently assist residents, youth, business people, growers, farmers and educators in making informed decisions and developing important leadership and life skills. We use a variety of methods to disseminate university-based knowledge, including workshops, webinars, publications, mass media, websites, individual consultations, 4-H clubs, youth activities and special events. Extension academics & staff provide ongoing leadership and resources to

facilitate the delivery of quality, cost-efficient community services that address local and regional needs. We serve in community partnership roles on committees and boards such as: California Weed Science Society, Glenn Co Farm Bureau, American Society of Agronomy, West Coast Nut Advisory Board, Almond Board Leadership Program, Orland Tree Committee, Olive Pest Management District, Orland Bee City USA Committee, California Women for Agriculture, Glenn County Resource Conservation District, Glenn-Colusa Cattle Women, Orland Rotary, UC Davis Center for Food Animal Health Stakeholder Committee, and so many more!

The Glenn County 4-H Youth Development Program provides youth with the leadership and life skills needed to be a successful adult. This year alone, this program hosted over 46 leadership opportunities and events for over 500 local youth.





ABOUT

The Orchards program serves growers and pest control advisors (PCAs) who farm tree crops in Glenn, Butte & Tehama counties. We provide research based information and advice on all aspects of orchard production from pre-plant to orchard removal.

RESEARCH

This research program aims to improve production practices and the success of our local industry. Research projects funded in 2016-2017 include:

- Mechanical topping of dormant 2nd leaf almonds
- Biological control of brown marmorated stink bug
- Feasibility of adding almond hulls to producing almond orchards
- Walnut rootstock improvement
- New control materials for olive fruit fly
- Winter water management in almond orchards
- Field evaluation of almond varieties

MEETINGS

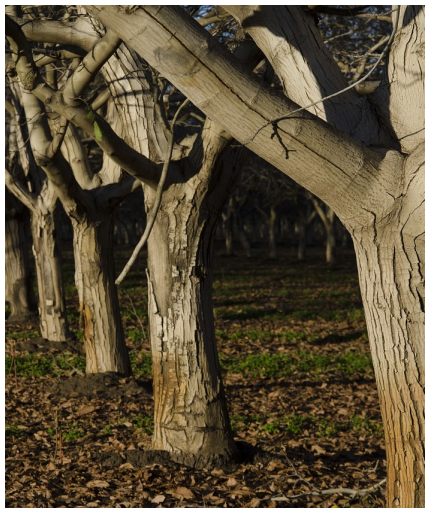
There are annual meetings offered for growers and PCAs of olives, almonds & walnuts. These meetings present current research updates and best management practices. Additionally, they offer continuing education (CE) credit opportunities through California Department of Pesticide Regulation and Certified Crop Advisor (CCA credits).

NEWSLETTERS

Newsletter are mailed to subscribers 3-4 times per year, either by hard copy or email. In addition, newsletter articles & archived articles are posted online at www.sacvalleyorchards.com.

Advisors-

Dani Lightle Orchard Systems Advisor





Advisors-

Betsy Karle Dairy Advisor

ABOUT

The dairy program serves producers and allied industry by conducting research activities to guide on-farm management decisions. Information about management practices for all types of dairies is available and programmatic activities are driven by clientele needs.

management practices in their herds. The team is now working to develop a risk analysis tool to improve management of respiratory disease and reduce unnecessary antimicrobial use.

RESEARCH

The primary research project in the 2017 year was a risk assessment and analysis for dairy calf respiratory disease management. Respiratory disease has lasting impacts on animal productivity and the research team pursued strategies to aid in early diagnosis and management. A convenient scoring system and mobile app to diagnose the disease was developed with veterinarians and professors across the University of California continuum. Local dairies participated in a year-long analysis of respiratory disease and

NEWSLETTERS

Four issues of the California Dairy Newsletter, collaborative, research-based dairy newsletter, were distributed to subscribers throughout the year.





Advisors-

Mariano Galla Agronomy & Weed Science Advisor

ABOUT

The agronomy and weed science program serves growers and pest control advisors (PCAs) who farm agronomic crops in Glenn, Butte and Tehama counties. In addition, the weed science program also offers assistance to nut and fruit tree growers.

RESEARCH

The current agronomy and weed science program was initiated in June 2017. During this first six months research projects have been developed based on the needs of local growers. In particular, attention will be focused on:

- Emerging problematic weeds in orchard systems
- Weed management programs in rotational crops
- Herbicide resistant weeds management in both orchard and agronomic crops

- Alternatives to chemical control of weeds
- Herbicide drift studies

The weed science program is also co-operating with the IR-4 project. This is a project designed to increase pest control options for low-acreage crops.

NEWSLETTERS

In September 2017, the first issue of Weed Management Notes newsletter and the first issue of Sacramento Valley Agronomy Notes, in collaboration with advisors from Colusa and Yolo counties, were mailed to subscribers.

The Sacramento Valley Agronomy Notes are a quarterly publication and the Weed Management Notes are published on a



4-H Youth Development Program-

Sara van Tol Representative



In Glenn County, the 4-H Youth Development Program helps young people reach their full potential as competent, confident, caring leaders of character who are connected to others and contribute to their communities. The focus of the 4-H program is positive youth development through activities in science literacy, healthy living, and citizenship.

Glenn County maintains a large 4-H program, which includes:

- 10 community clubs
- Nearly 200 adult volunteers
- Over 500 youth members

All 4-H leaders are volunteers who donate thousand of hours of their time, per year, to provide leadership and training to youth ranging in age from 5 to 19 years.

Glenn County is quite unique. We offer many different and special

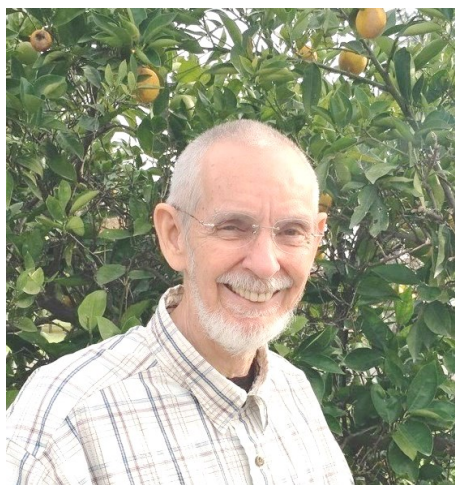
projects for our members. This year we offered some one-of-a-kind projects, like: West Haven Angels (activities with residents of a local Senior-living facility), Hi 4-H (a junior leadership/ community service program), Jr. Master Gardeners (lead by our Volunteer Master Gardeners), 4-H Yoga, a wide variety of animal projects, and so many more!

We have a thriving leadership team of All Star & B.L.A.S.T (Becoming a Leader, All Star in Training) members.

Community Service is very important in Glenn County. In 2016 and 2017 4-H members participated in Adopt-a-Family, Coats for Kids, Fairgrounds Clean-Up Day, National Night-Out and Red Ribbon Week.

#4HRECIPE4
Success





The UC Master Gardener Program of Glenn County started in 2011 with a class of 15 students. Since then, three more classes have graduated in the program, the most recent being the class of 2016 with 14 students. These students have worked on Master Gardener Projects for a documented total of 3,063 volunteer hours since 2011. In addition, UC Master Gardeners in Glenn County have attended 628 hours of Continuing Education in which they learned of new research, new skills and new strategies to share with their neighbors in the county.

Some recent UCCE Glenn County Master Gardener projects include:

- Weekly Plant Clinic
- Tree Hazard Workshop
- Biweekly newspaper articles and a weekly in-house Newsgram
- Presentations to the Hamilton City Lions Club, Willows Rotary Club, and the Orland Friendly Garden Club



- Award-winning booth at Glenn County Fair, three years running
- Planned and installed a Demonstration & Teaching Garden at the UCCE Office to be used as a Master Gardening project and for the Junior Master Gardening project for 4-H youth members



**UCCE Glenn County
Master Gardener**

PLANT CLINIC

Plant Clinic Hours Wednesdays from 2:00 to 4:00pm, UCCE Office, 821 E. South Street, Orland

Walk-ins are welcome!
Call us 530-865-1107



Looking Forward

UC ANR envisions a thriving California, where healthy people and communities, healthy food systems, and healthy environments are strengthened by a close partnership between the University of California and its research and extension programs and the people of the state.



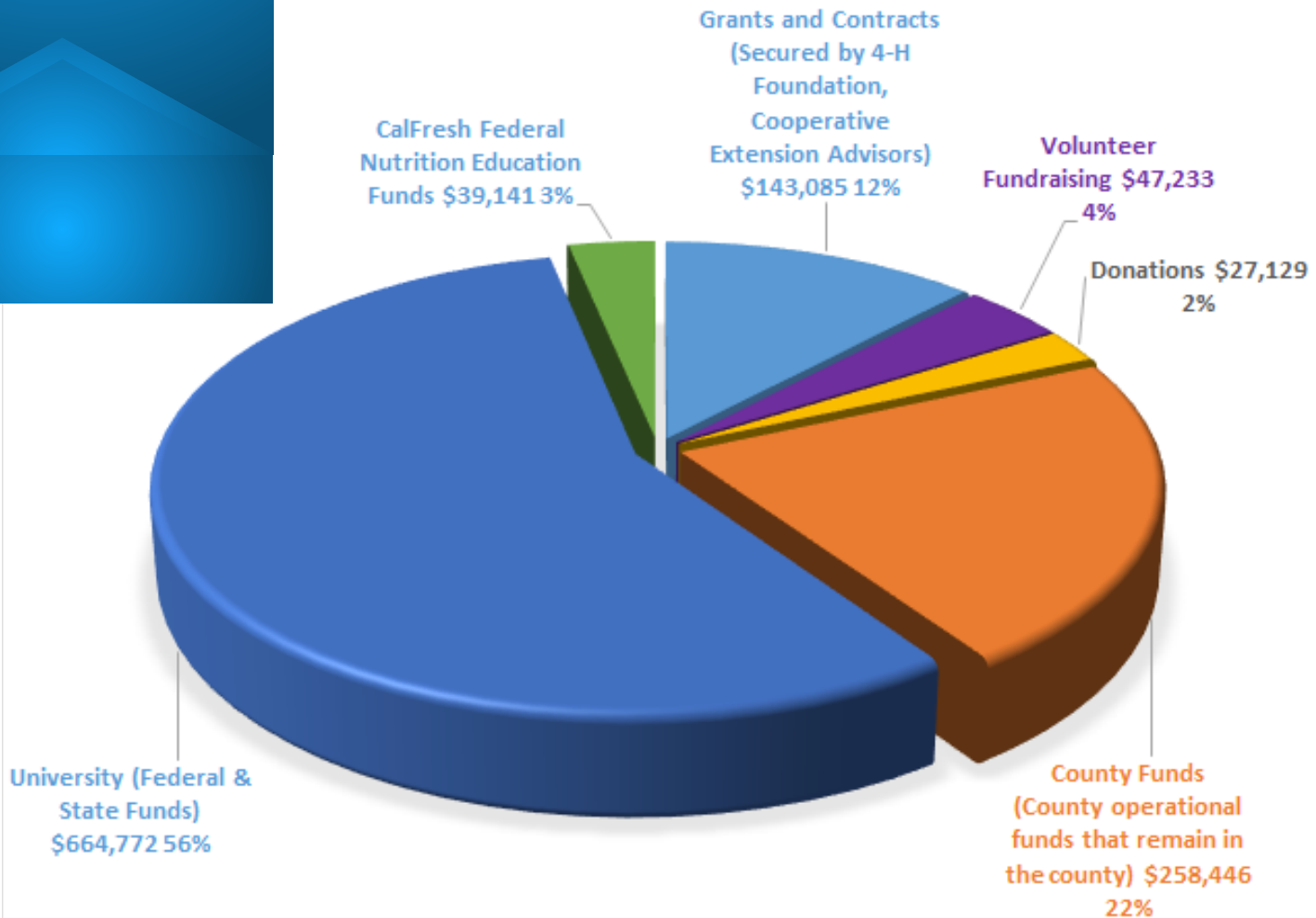
UCCE Staff Members

From Top Right: Betsy Karle, Dairy Advisor/ County Director; Dani Lightle, Orchard Systems Advisor; Mariano Galla, Agronomy & Weed Science Advisor; Sara van Tol, former 4-H Youth Development Program Representative; Bob Scoville, Master Gardener Coordinator; Cindy Montes, Research Assistant; Starryne Lefeldal, Office Manager/Administrative Services Analyst; Lea Eddy, Accounting & General Services Specialist; Gail Johnson, Office Assistant.

Resources & Financial Management Report

The University of California, Division of Agriculture and Natural Resources provides advisors and educators that conduct programs for Youth Development (4-H), Orchard Crops, Dairy, Agronomy & Weed Science and Master Gardeners. Additional programming is provided by advisors from neighboring counties for rice, integrated pest management, irrigation and water resources, livestock, pasture and range management, and nutrition, family and consumer sciences. The value of the University's support of UC Cooperative Extension in Glenn County was \$664,772 for the 2016-2017 fiscal year, accounting for 56% of our total operating costs. Additionally, our staff generated \$143,085 in grant funds, fees and gifts to support program delivery in Glenn County. The County provides office space, support staff, supplies and services necessary for program delivery, valued at \$258,445.52. Community-based research, public service, outreach and education are integral parts of UCCE's service in Glenn County.

FY 2017 ANNUAL EXTENSION REPORT



Special Thanks To Our Previous Donors

BRONZE(\$1-99)

William Nord
Alyse Pendo
Amy Sawyer
Ute Wirth
Bernice Bertapelle
Carly Ranch
Robert and Phyllis Lester
Manuel Cesa
Jacquie Deitz
Jerald and Shirley Garnett
Charles and Shirley Gee
Ernie and Becky Hanson
Kenneth and Donna Peterson
Andy Schram
Jake van Tol
Bobbie Jean Dorvall
Carolyn and Jack Pendergrass
Rick Beatty
Ray and Jeanne Collette
David DeMello Trucking
Mary Fiack-Miller
Flynn's Welding & Machine
Janet Gallegos
Hagan Ranch & Country
Woodworks
Connie Hanks
Loretta Little
Michael and Laurie Murray

Rick Plocher
Dorothy Post
Powell Apiaries
Ernest and Sonia Salinas
Dalene Shipplehoute
Jessie Westcamp
Harold and Gloria Hervey
AAA & D Ranch
Mike and Shay Alves
Don and Kimberly
Barceloux
Kirstine Booth
Nick and Kathy Coatney
Linda Corbin
Thomas and Dianna
Dawson
Diana Domingo
Robert Eden
Ken Eden
Sandra Fecher
Lynda Fitzgerald
Shari Gaines
Louie Johnson
Jeff and Linda Joseph
Connie King
Marcus Koehn
Ralph Konu
Curt and Sara Martin
Bob and Carol McKinney
Doug Meents
Smith Family Dairy
Ray and Darlene Odom
Russ and Lea Osborn
Emily Rowe
Bob and Sylvia Sexton
Charles Simmons
Maudrie Smith
Collin and Leana
Stoltenberg
Adele Stout
Evelyn Weir
Oscar & Jean Williams
Gail and Wanda
Zimmerman
Fair Trade Corner, Inc.

SILVER(\$100-249)

Alderson Dairy
Glennair Ranch, LLC
John and Peggie Amaro
J. Mark and Clifta Atlas
Shirley Boracci
Patricia Bruce
Alan Carrier
Lee Cole
Scott and Josie Corporon
Endres Family Farm
Erickson Orchards

Carl and Connie Funke
Fred and Willynda Freitas
Eduardo and Patricia Galvez
Kenneth Gilmore
Bruce Grivey
Randy and Janet Hansen
Olive Growers Council
Oliver B. Hill
John and Patricia Holm
Roy Holzapfel
Lloyd James
Andrew Janos
Jim and Diane Jones
Kennedy Ranch
Louella Kennedy
Thelma King
Bill and Dianne Krueger
Lohse Ranch
Maben Farms
Paul and Jill Martin
Rick Massa
Charissa Olmos
George and Joanne Overton
Rafael Perez
North Valley Ag. Services
Ramos & Kley Ranches, LLC
Raygoza and Son Hay, Inc.
Del Reimers
John Roller
J & L Bees Pollination
Odyssey Farms
Greg Steel
W. L. Stile & Son, LLC
Larry and Theresa Thurman
Lee Traynham
Alex Vereschagin
Harold and Kathy von Bargaen
Wilson Farms
Georgio Zografos
Weller Ranches, Inc.
College City Warehouse
Larry and Michelle Massa
Overton Orchards
Greg and Barbara Overton
Zane Amaro Farms
Stan and Ces Hawthorne
Leonard and Marsha Kaiser
Adam and Jackie Kennedy
John and Barbara McCracken
Gary and Cindy Nunes
Jason and Dee Osburn
Silveira Farms
Kurt and Pam Cundiff
Mid-Valley Veterinary Hospital
Bar M Cattle Company

Bill Owens Ranch, LLC
Schmidt Farms
Skala Ranch Partnership
Bonnema Ranch
Cotton Bow Ranch
Ryan Beck
Dennis Biro
Terry and Judy Brinson
Bill Burrows
Bill and Jen Carriere
Primo Carrillo
Couto Dairy
Maureen Doherty
Andrea Feeney
Bob Gaines Ranch
Mike Garcia Farms, Inc.
Violet Grivey
Heitkam's Honey Bees
Don and Bonnie Hibdon
Richard Hull Farms
Chris Johnson
K & S Farms
Jonathan Koehn
Yvonne Koehnen
Lenus Landberg
Renaud Ranch
Martin Bros.
Martinez Ranches, Inc.
Eugene and Cheryl Massa
McDermott Livestock
Ron and Doreen Mendes
Geof and Cathy Miller
John and Patty Montz
Heritage Insurance
Erick Nielsen Enterprises, Inc.
Paulos Collision Repair
Ernest Pieper
Deniz & Pinheiro Farms
Dale and Patti Reed
Ernie Simpson
Ron Simson Land Leveling
Craig and Gina Taylor
David and Diane Taylor
6 T's Farm
Jamie and Mildred Tucker
Van Uong
Dale Wallander
GOLD(\$250-499)
Darlene Beale
A.L. Gilbert Co
Punch and Jeanne Haskell
Keyawa Orchards, Inc.
McCorkle Farms
MTSJ Dairy
Bob and Laura Sailsbery

Robert Sanders Consulting
Schroer Dairy
Michael and Susan Silveira
George Swaner
King and Carol Wilson
Ray and Evelyn Brumbaugh
Ratliff & Demmer Farms
Schager Dairy
Greenwood Dairy
Don and Barbara Parisio
Craig and Susan Vereschagin
Stino and Donna Bassetti
Steve and Shelly Brown
Crain Orchards, Inc.
Carriere Family Farms
David and Debbie Garcia
Hart Farms
Herb and Ginger Holzapfel
Mendonca Orchards, Inc.
Frank Reimann
Darin and Leila Titus
Simplot
DIAMOND(\$500-999)
GSA Farms, Inc.
Margaret Ann Cole
Golden State Farm Credit
C. F. Koehnen & Sons, Inc.
K & S Spreading & Hauling,
Inc.
Musco Olive
Escalon Livestock Market, Inc.
Safety Tire Service
PLATINUM(\$1000+)
Country Pumpkins
JCS Marketing Inc
Conte Farms, Inc.
Rue & Forsman
Farm Credit Services of
Colusa-Glenn

We have made every effort to recognize our many generous donors while honoring any request for anonymity. We apologize for any omissions.

P.S. You can give online by visiting <http://ceglenn.ucanr.edu> OR scan the QR code with your mobile device!



Board of Supervisors



Keith Corum, Chair

District 4

Keith spent many of his years in ministry, serving as a Senior Pastor of two separate churches before retiring in 2013. He is currently serving on many local boards and committees. Some of which include: Citizens for Senior Housing, Area Agency on Aging and many others.

Vince Minto

District 3

Vince has served the Glenn County community since 1979. He began his career in the Assessor's Office, holding many positions and then going on to the elected position of Assessor/Clerk/Recorder/Elections. Vince since retired from that post and has now started a Real Estate Appraisal and Consulting Business and serving on the Board of Supervisors.



John Viegas

District 1

John has devoted the greater part of his life to Public Safety. He served the City of Chico and Orland Police Departments, among others. He is currently serving on the Regional Council of Rural Counties and Local Agency Formation Council.

Dwight Foltz

District 2

Dwight has lived in Glenn County for the majority of his life. He is the owner/operator of Foltz Construction, focusing on water well drilling. Dwight serves on the First 5 Council, Resource Conservation District Board and many more.

Leigh McDaniels

District 5

Lee has worked the majority of his adult life in rocket science. However, since the early 90's Lee has taken on the title of farmer in Orland, CA. He is currently serving on many committees and boards with a recent focus on groundwater.



UC
CE

University of California
Agriculture and Natural Resources
Cooperative Extension

