

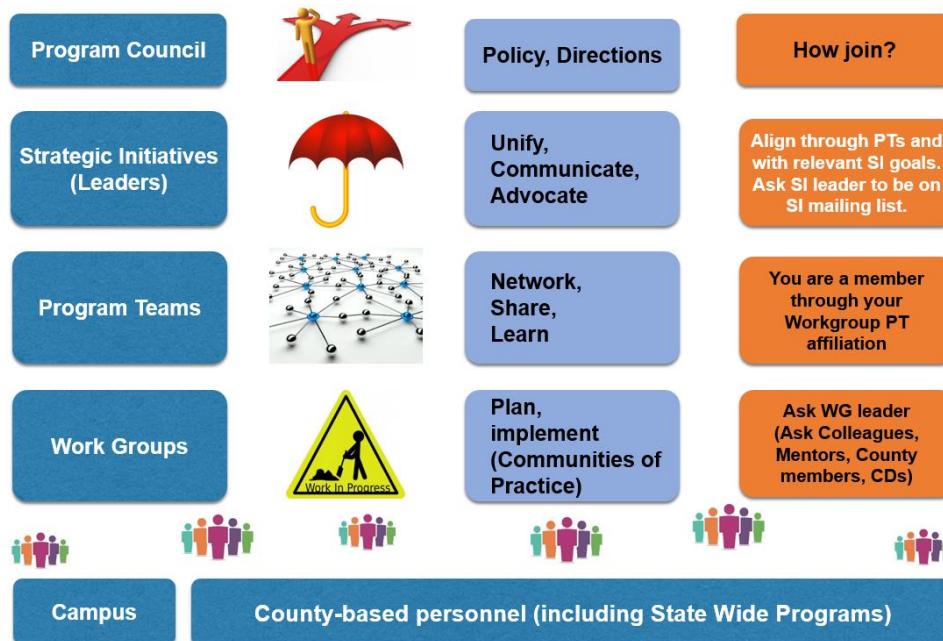
Successful Extension is built on relationships and trust. Here are a few tips for making connections.



## UC ANR Colleagues

- Use **UC ANR's directory** or the **Taxonomy & Personnel System (TPS)** to learn about colleagues.
- **Workgroup (WG):** Join a WG to collaboratively plan and implement research and extension activities with other Advisors, Specialists, AES, etc.
- **Program Team (PTs):** Your workgroups can join PTs to network, share and learn across workgroups.
- **Strategic Initiatives (SIs) unify, communicate and advocate** to enhance the impact of our extensive Research and Extension Network.
- **Campus colleagues:** Contact Deans, Department Chairs, Specialists and AES faculty.

*Visit the [UC ANR Strategic Initiative page](#) to find contacts for the Program Teams and Workgroups*



## Key contacts (growers, community leaders, organizations) and workgroups.

- **Talk** to mentors and colleagues for guidance in making contacts.
- **Attend** meetings and events—county, commodity, industry. Talk to mentors and colleagues for help in prioritizing where to participate. (e.g., Farm Advisors can attend CCA and PCA meetings)

## UC ANR Organizations

Learn about the

- **Research and Extension Centers;**
- **Statewide Programs and Institutes (California Institute for Water Resources and Nutrition Policy Institute)**

