

# Options for burning on private lands

Kate Wilkin, PhD  
Forestry, Fire, and Natural Resource Advisor  
Sutter, Yuba, Butte, and Nevada Counties  
University of California Cooperative Extension  
Office: (530) 822-7515  
Cell: (530) 645-2631

[kwilkin@ucanr.edu](mailto:kwilkin@ucanr.edu)

[cesutter.ucanr.edu/LivingWithFire/](http://cesutter.ucanr.edu/LivingWithFire/)

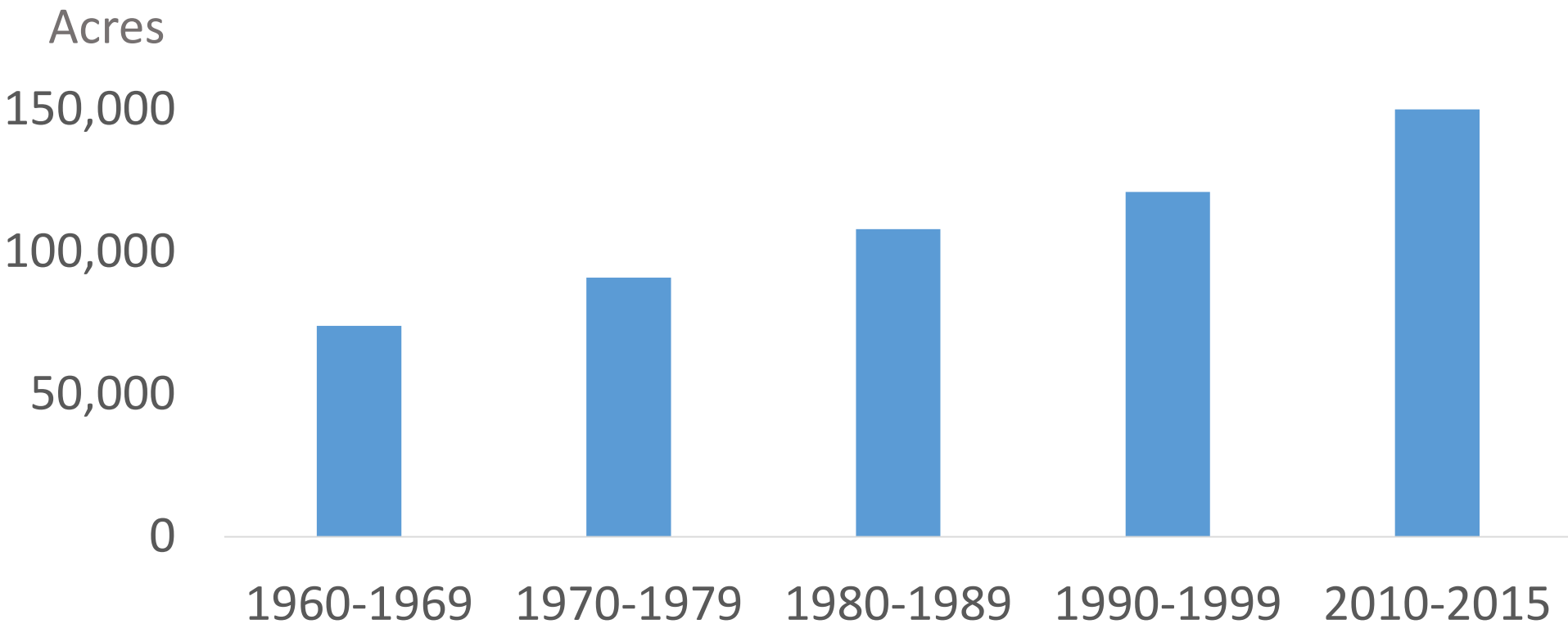
[facebook.com/SYLivingwithFire/](https://www.facebook.com/SYLivingwithFire/)

In collaboration with:

Lenya Quinn-Davidson  
Area Fire Adviser  
Humboldt-Del Norte Counties

Jeff Stackhouse  
Livestock Adviser  
Humboldt-Del Norte Counties

# Annual average acres burnt in California are increasing

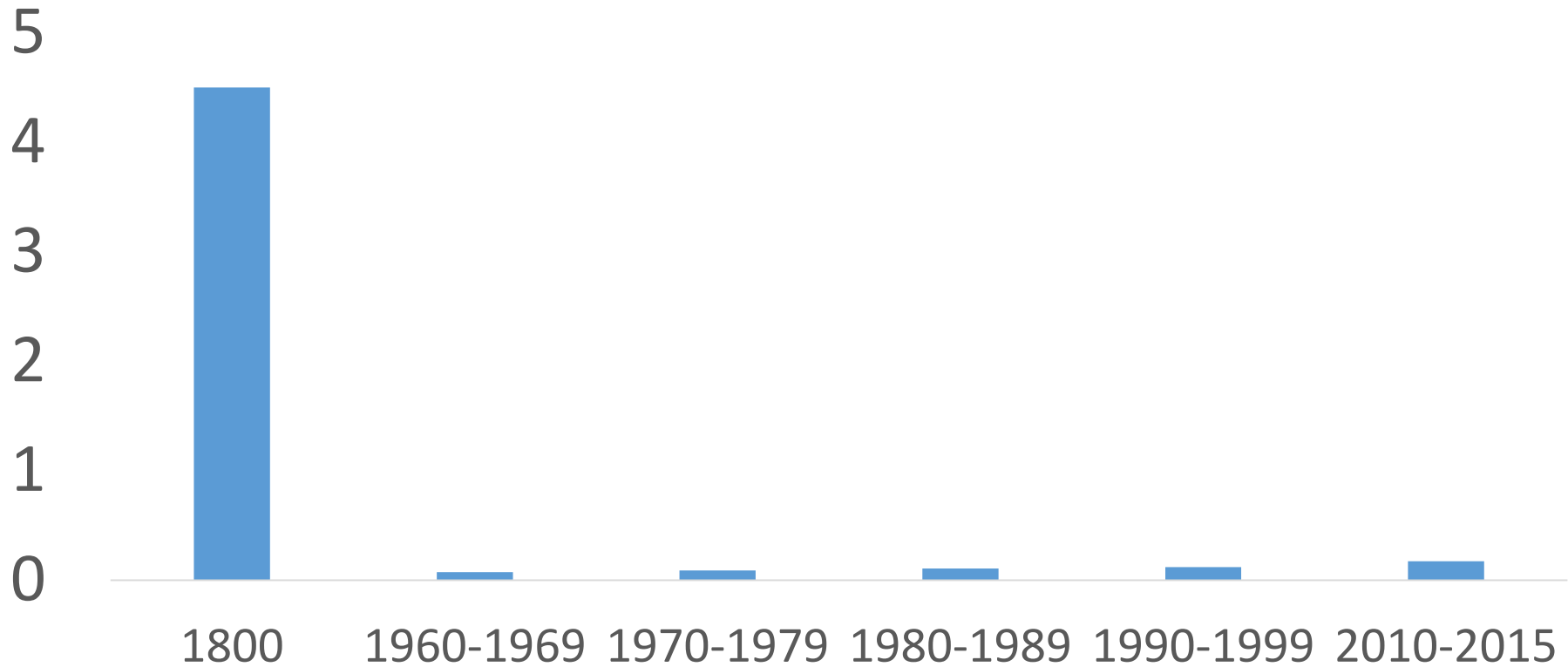


*Adapted from*

S. L. Stephens, R. E. Martin, N. E. Clinton, Prehistoric fire area and emissions from California's forests, woodlands, shrublands, and grasslands. *Forest Ecology Management* **251**, 205 (2007).

# Annual average acres burnt in California

Millions of  
Acres



*Adapted from*

S. L. Stephens, R. E. Martin, N. E. Clinton, Prehistoric fire area and emissions from California's forests, woodlands, shrublands, and grasslands. *Forest Ecology Management* **251**, 205 (2007).

# Options for private lands burning



Cal Fire Vegetation Management Program (VMP)



Contractor



Collaborative



Prescribed Burn Association



Do It Yourself



# Cal Fire's Vegetation Management Plan (VMP)

## Pros

- Liability covered by CAL FIRE
- Low cost for landowner
- Experienced crews/resources
- Permits/air quality covered

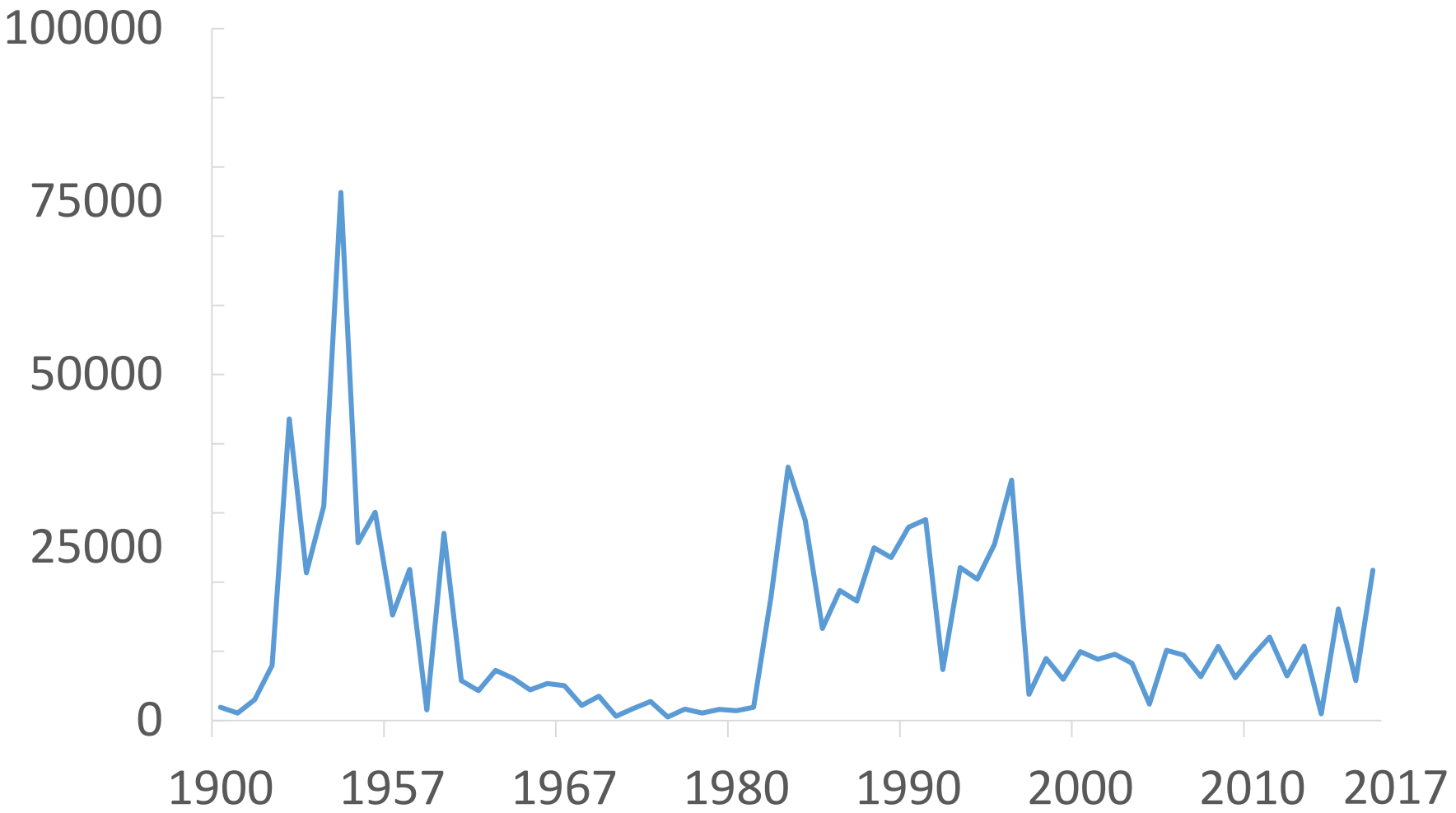
## Cons

- Limited agency capacity
- Limited agency interest
- Planning time/environmental compliance
- Not guaranteed
- Overall timeline

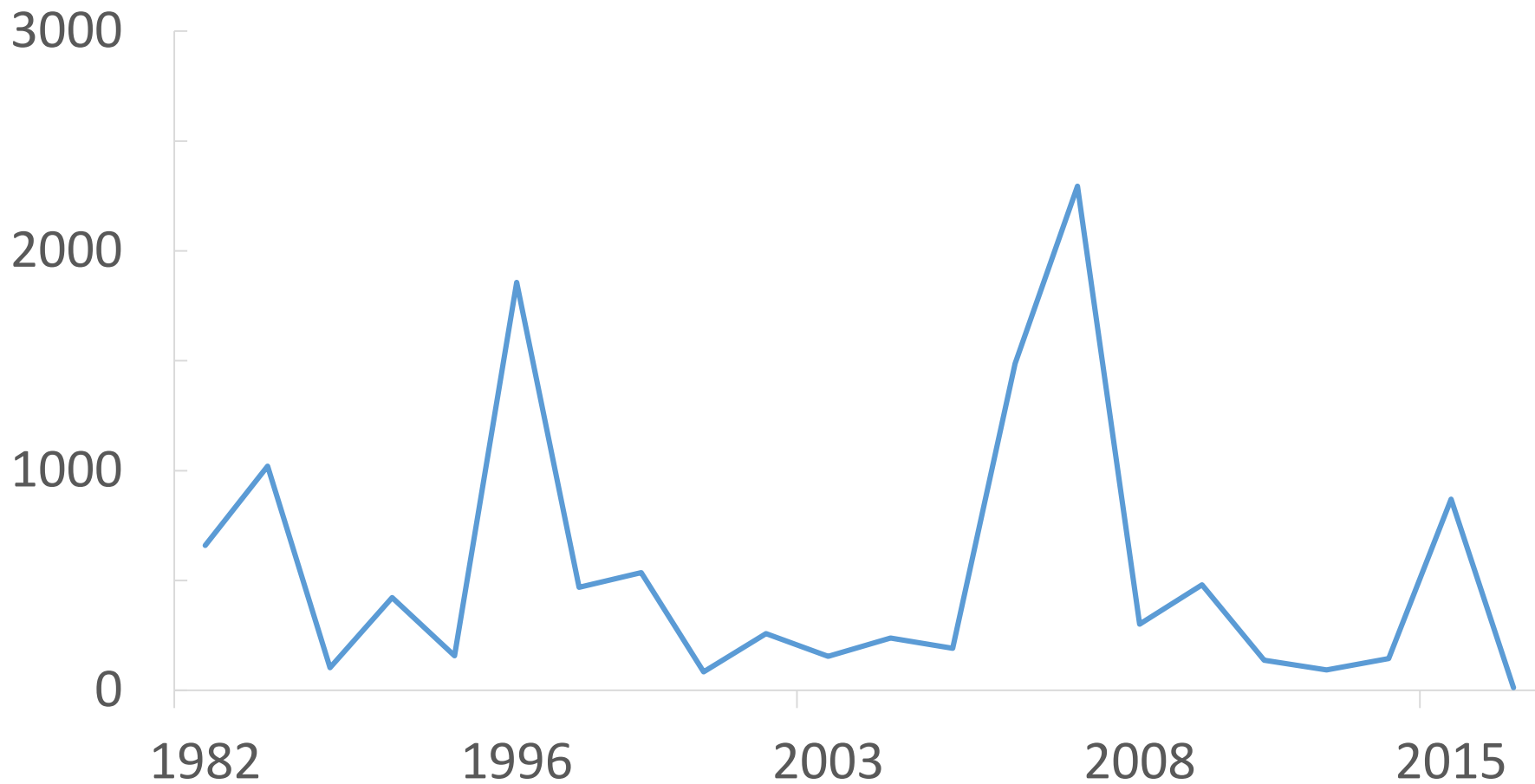


# Cal Fire Vegetation Management Program (VMP)

## Prescribed fire acres



# Cal Fire Nevada-Placer-Yuba Unit Vegetation Management Program (VMP) Prescribed fire acres



# Other agencies

## Pros

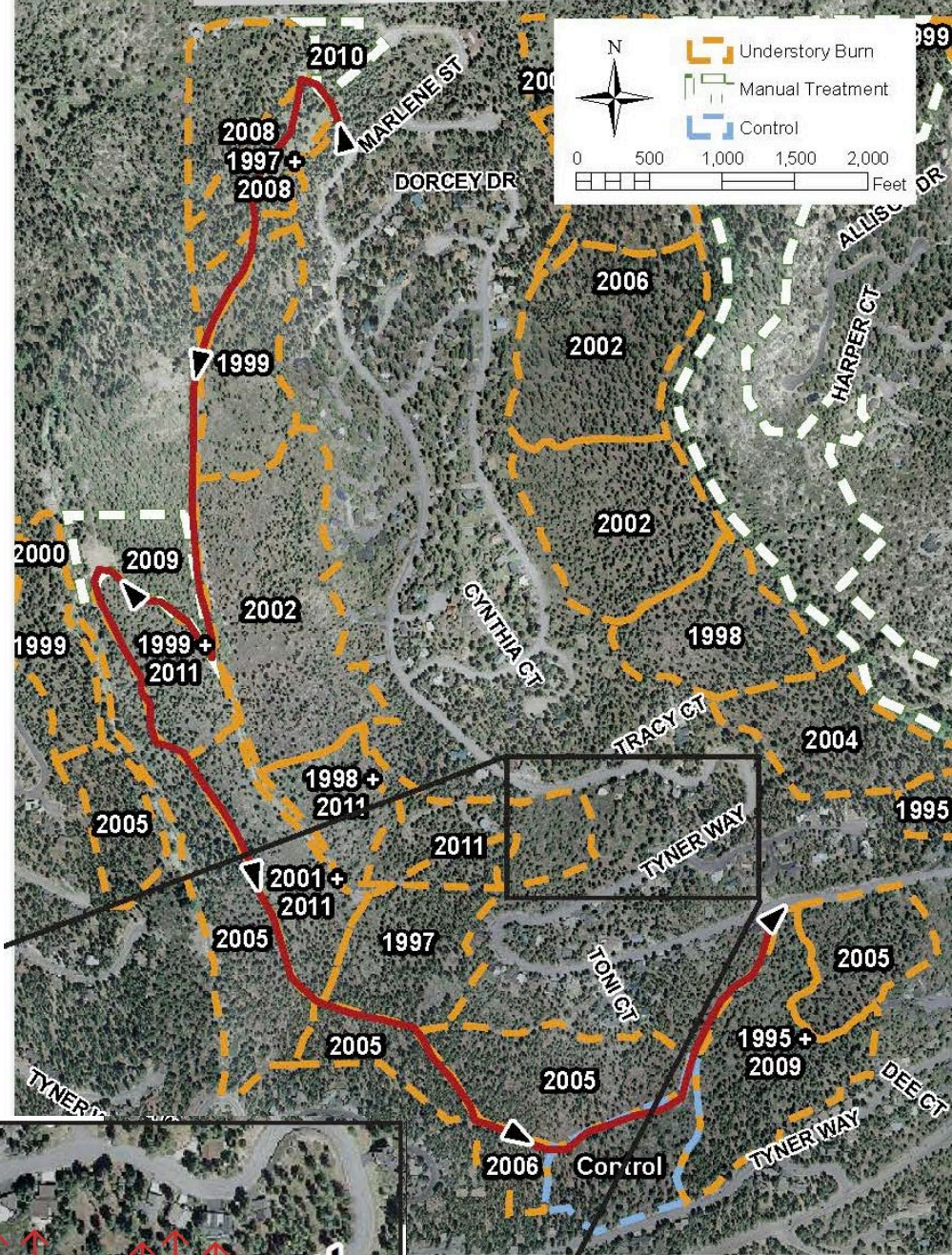
- Liability covered by agency
- Low cost for landowner
- Experienced crews/resources
- Permits/air quality covered

## Cons

- Tax for landowners







# Contractors

## Pros

- Contractor provides some insurance
- Landowner can set expectations and timeframes
- Experienced crews/resources
- Permits/air quality covered
- Environmental compliance
- Landowner doesn't have to do hard work
- May be able to get some training



## Cons

- For profit firm: Cost
- Non-profit firm: Longer time frame and uncertainty of grants
- Limited capacity

## Examples:

For profit firm: Armstrong Fire Safety, Bella Forestry, Firestorm, Prometheus, Wood's Fire

Non-profit firm: Terra Fuego

# Collaborative

## Pros

- Insurance provided
- Experienced crews/resources
- Permits/air quality covered
- Environmental compliance
- Landowner doesn't have to do hard work
- Landscape scale burns possible

## Cons

- Social infrastructure may not exist
- Limited capacity
- Limited timeframe



**RVCC**

Rural Voices for  
Conservation  
COALITION

[www.ruralvoicescoalition.org](http://www.ruralvoicescoalition.org)

TRINITY INTEGRATED  
FIRE MANAGEMENT  
PARTNERSHIP

A CASE STUDY

# Collaborative

## Pros

- Insurance provided
- Experienced crews/resources
- Permits/air quality covered
- Environmental compliance
- Landowner doesn't have to do work
- Build capacity
- Like summer camp, but better

## Cons

- Limited capacity
- Limited timeframe (1-2 weeks/yr)
- Priority may be training
- Need strong local leader

## Prescribed Fire Training Exchanges (TREX)



# Do it yourself

## Pros

- You're in charge—do it when and how you want
- Low cost
- Environmental compliance

## Cons

- Liability
- Manpower/resources
- Permits/air quality



# Prescribed Burn Association (PBA)

## Pros

- You're in charge—do it when and how you want
- Low cost—volunteer based
- Environmental compliance
- Equipment/labor pooled through PBA
- PBA can apply for grants/funding
- Every burn is a training opportunity



## Cons

- Liability (though you can hire a burn boss with insurance)
- Permits/air quality
- Someone has to coordinate

# Fire Wise Community

## Pros

- You're in charge—do it when and how you want
- Low cost—volunteer based
- Environmental compliance
- Equipment/labor pooled through Fire Wise Community
- Fire Wise Community can apply for grants/funding
- Every burn is a training opportunity
- May be a pre-existing community organization
- Focus on reducing fire risk

## Cons

- Liability (though you can hire a burn boss with insurance)
- Permits/air quality
- Someone has to coordinate
- May be a pre-existing community organization
- Focus on reducing fire risk
- May not be able to share resources at a regional scale (?)

Lower Colfax Fire Wise Community





Option	Cost to landowner	Success rate
Cal Fire's VMP	Very little	Limited
Private contractor	\$100 to \$900/acre	High
Non-profit contractor	\$0-100/acre	Moderate
Collaborative	Very limited cost	Moderate
TREX	Very little cost	Moderate
Do it yourself	Equipment, time/labor	High? (small scale only)
Prescribe Burn Association or other community organization	Equipment time/labor  Optional: Burn plan + burn boss (\$1.5-2k)	High