

SCE & CALFIRE VMP PARTNERSHIP

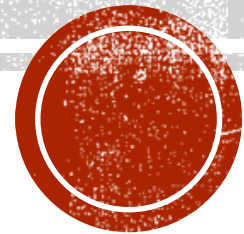
UC Cooperative Extension

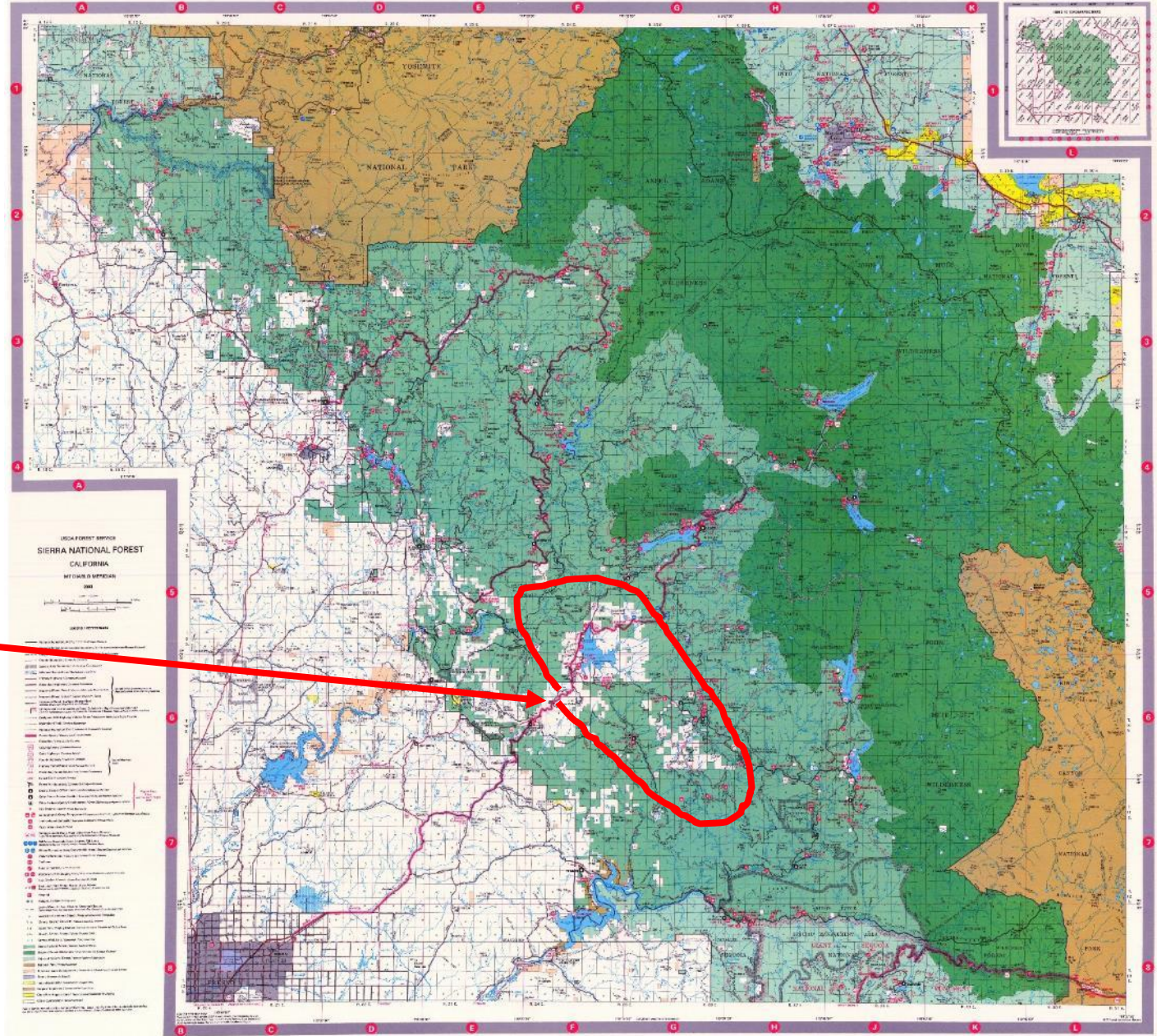
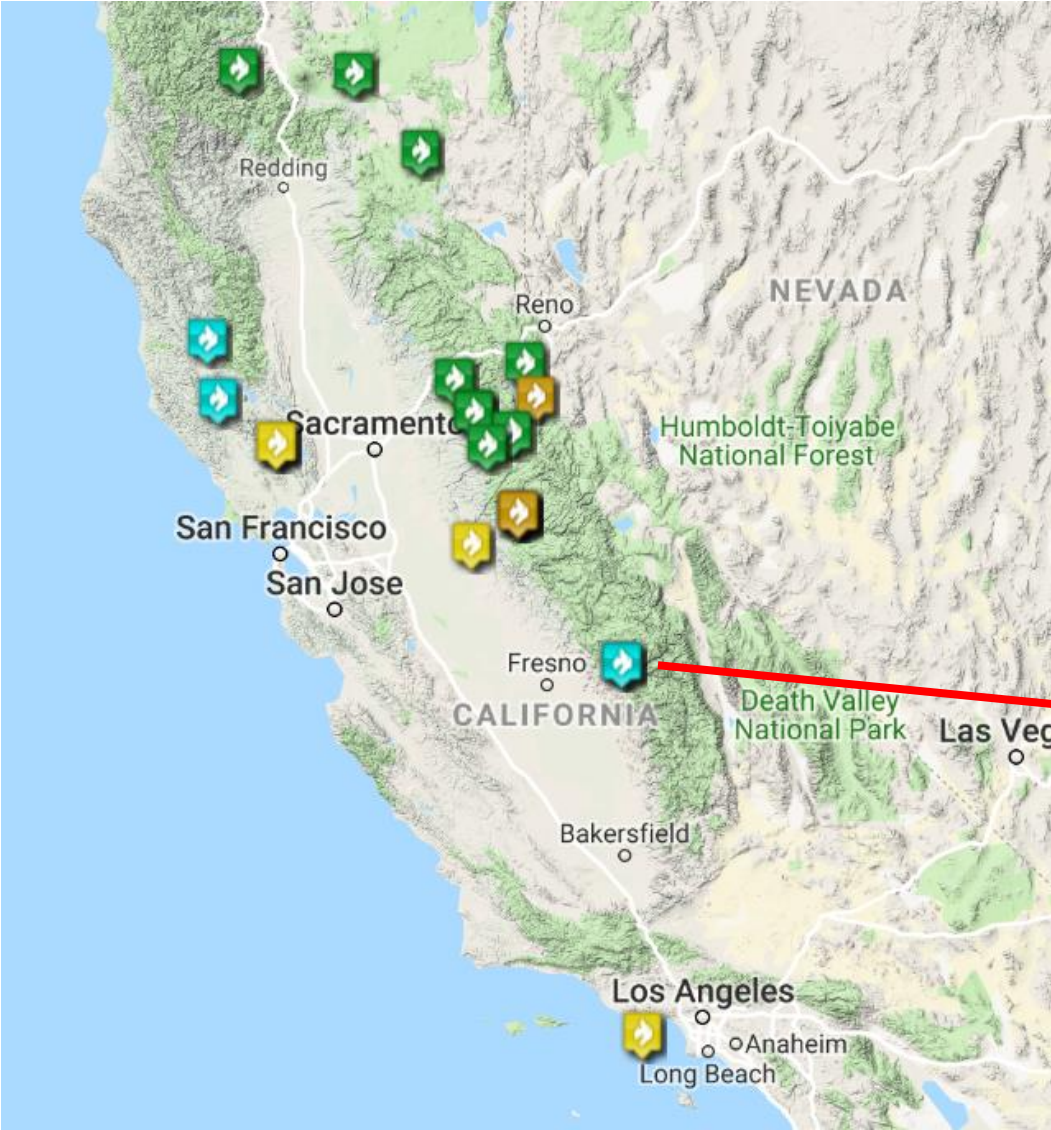
Prescribed Fire on Private Lands Workshop

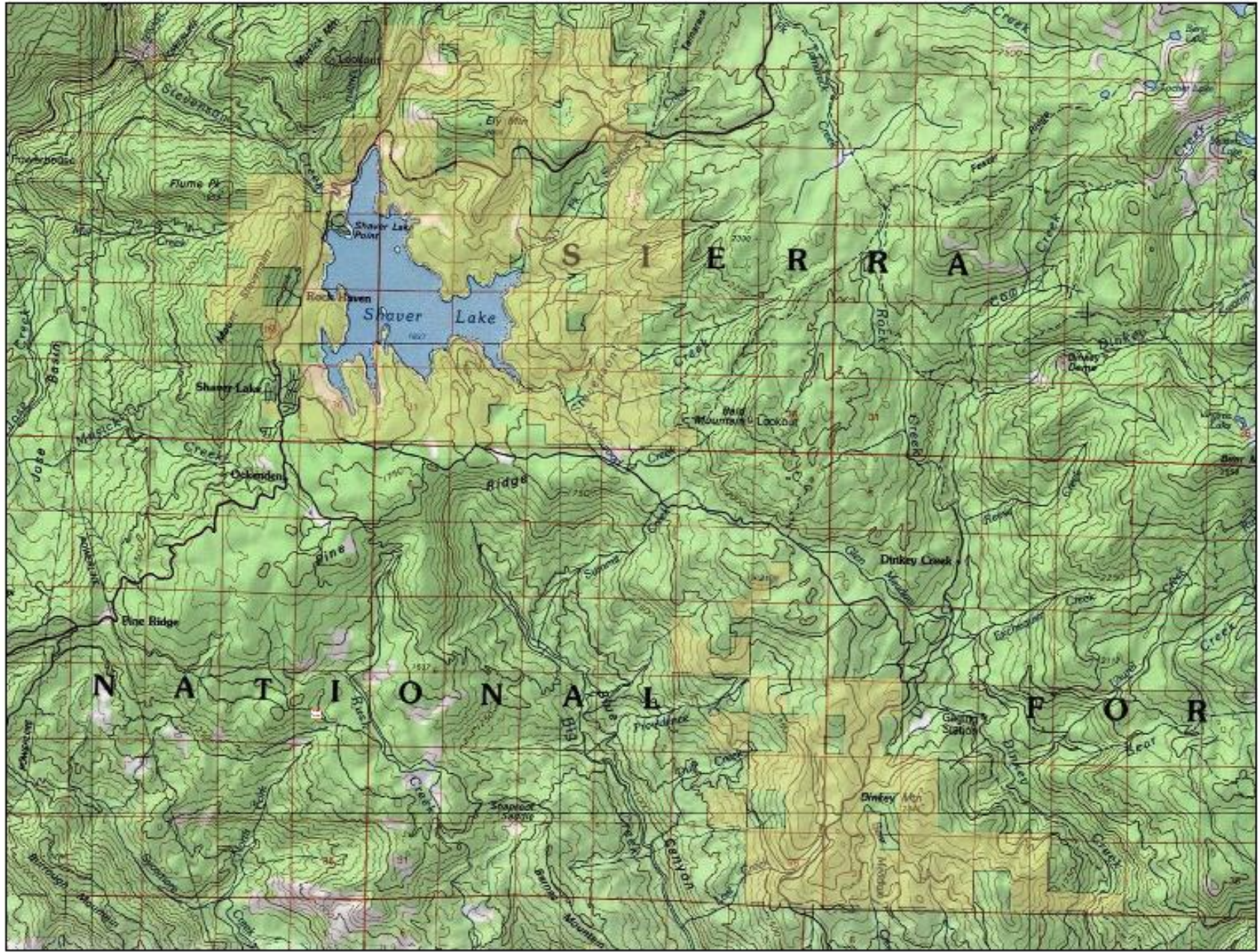
November 5&6, 2019

Ryan Stewart, Forestry Supervisor

Southern California Edison Forestry, Shaver Lake, CA







MANAGEMENT PRACTICES

20,000 Acre uneven-aged, mixed conifer forest managed to promote diversity and reduce density

- Selection Timber Harvests
- Pre Commercial and Non Commercial Treatments
- Reforestation of Native Seedlings
- Fire Use
- Wildlife Monitoring
- Community Relations and Recreation



SCE FIRE USE PROGRAM

Staff typically 3-4 ignition, 2 patrolman

Suppression Equipment:

- 2 Fire patrol trucks: 75g and 150g pump units
- 3 Fire trailers: Two 500g and One 300g

Burn units bounded by existing features and skid trails

Burn around 20 acres/ person on a good day

Opportunistic & Flexible: Tactical Fighter



SCE FIRE USE PROGRAM

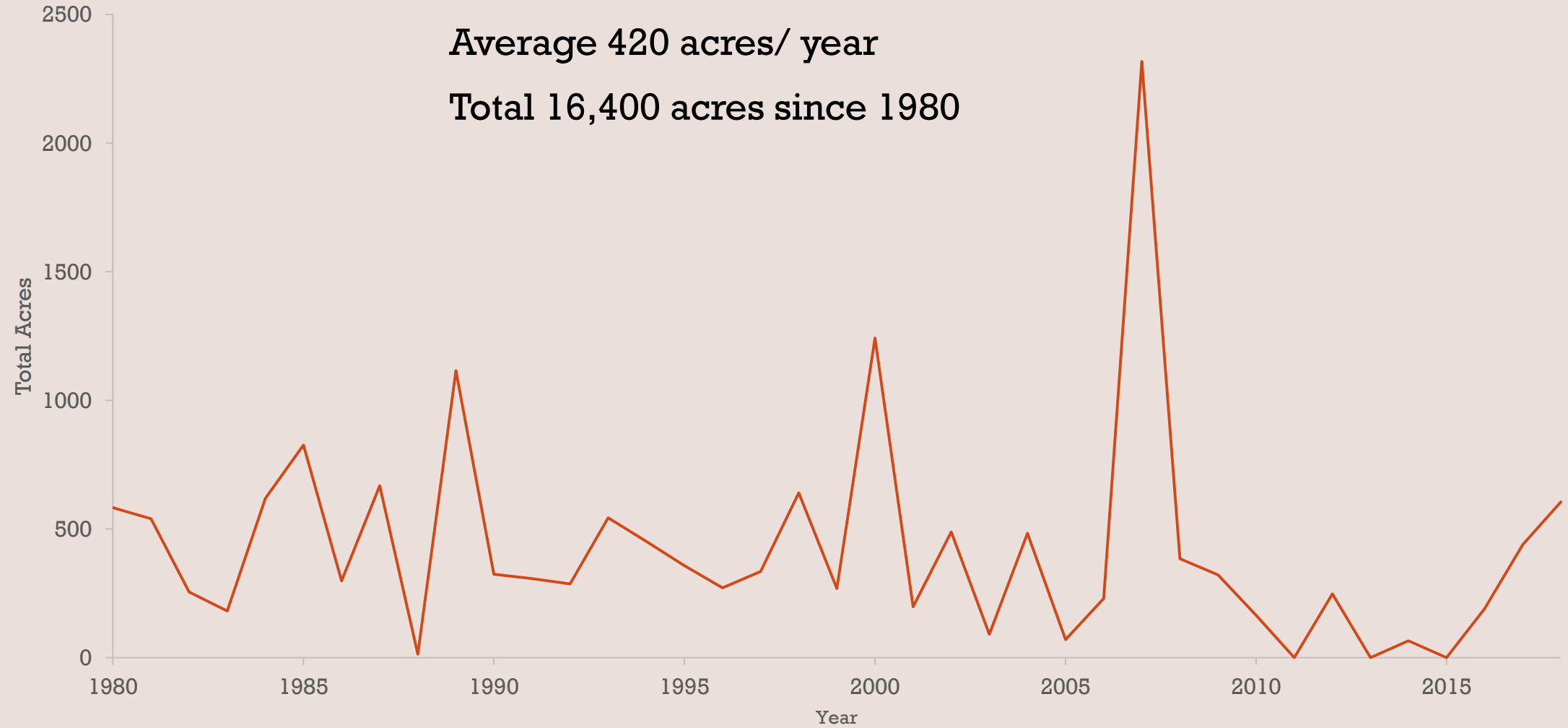




SCE Rx Burn History 1980-2018

Average 420 acres/ year

Total 16,400 acres since 1980



**SCE Burn History
1980-2017**

Legend

Prescribed Burn History

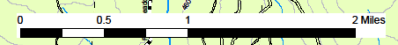
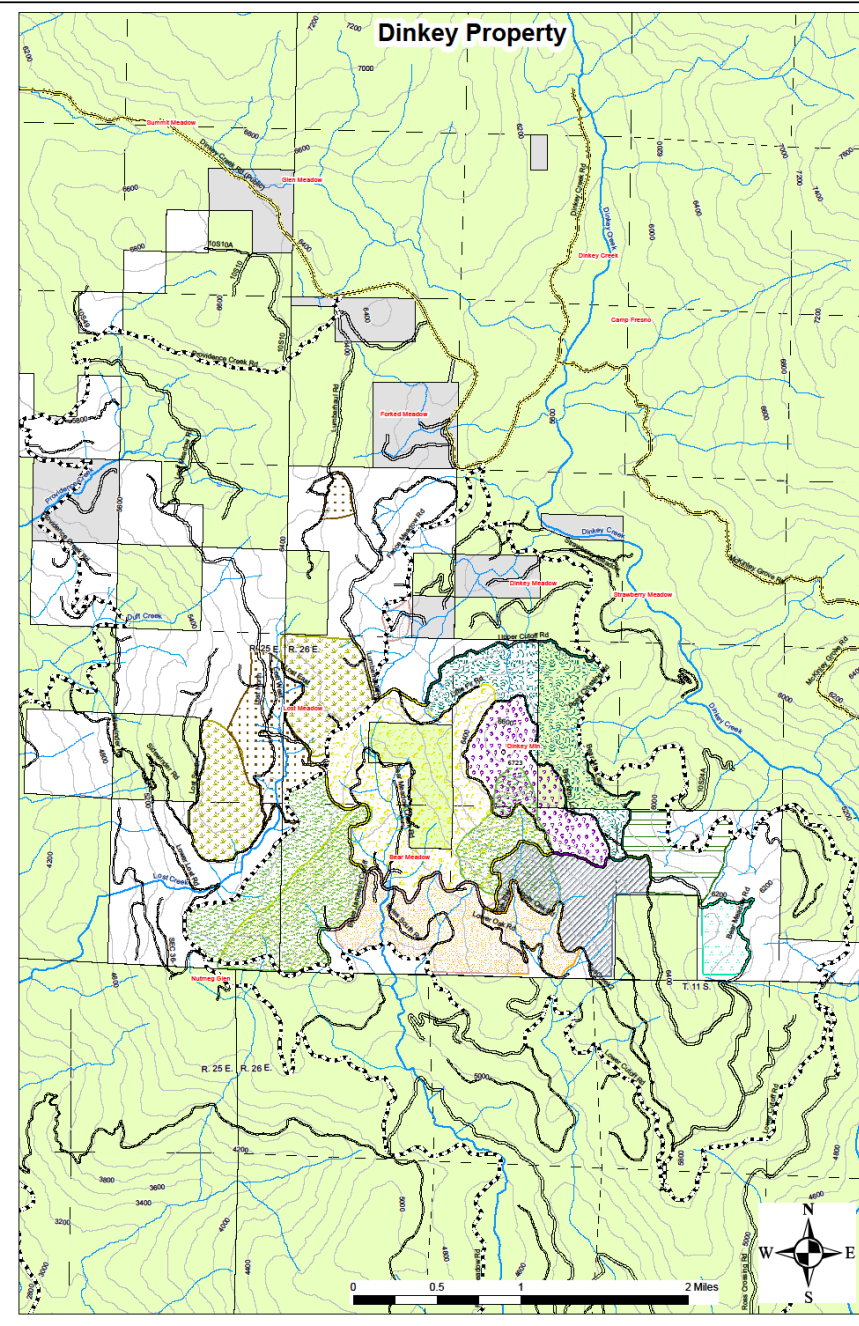
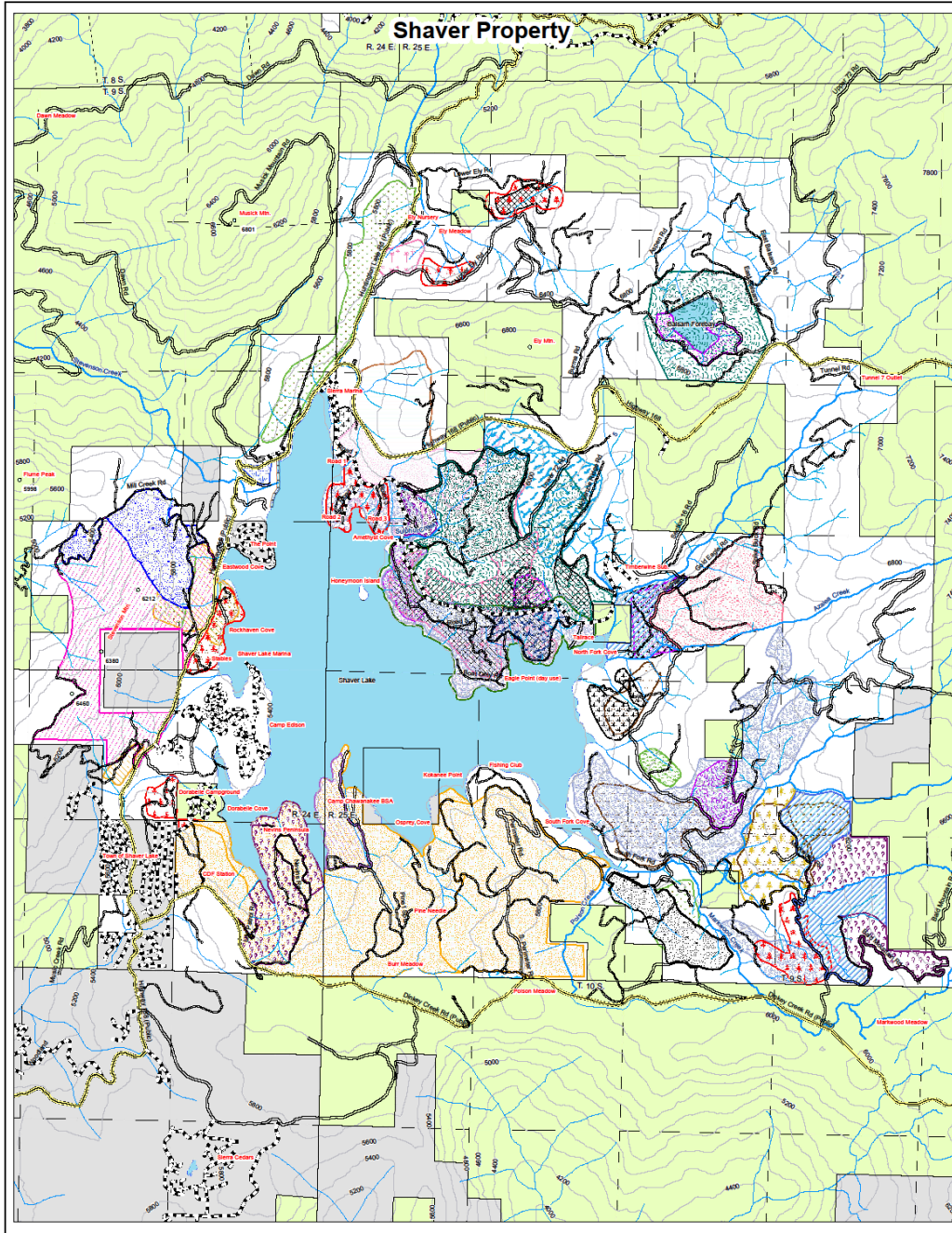
Year

- 1980
- 1981
- 1982
- 1983
- 1984
- 1985
- 1986
- 1987
- 1988
- 1989
- 1990
- 1991
- 1992
- 1993
- 1994
- 1995
- 1996
- 1997
- 1998
- 1999
- 2000
- 2001
- 2002
- 2003
- 2004
- 2005
- 2006
- 2007
- 2008
- 2009
- 2010
- 2011
- 2012
- 2014
- 2016
- 2017

Ownership

- SCE Lands
- USFS
- Other Private
- Fresno County

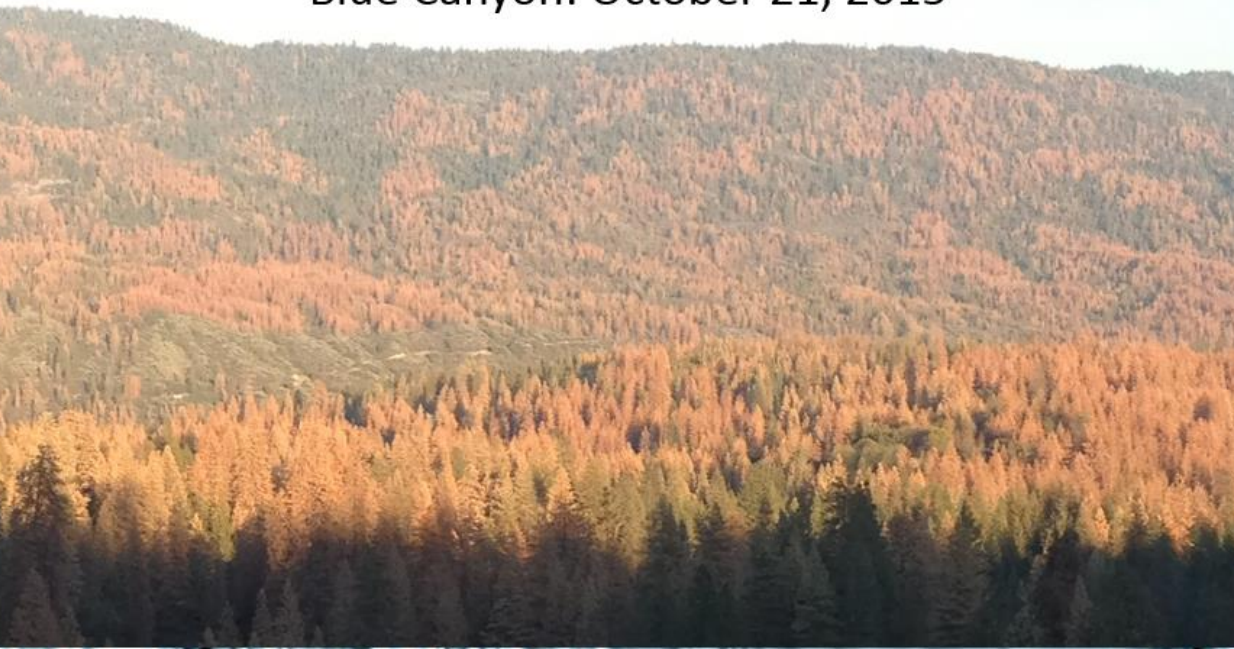
16 October 2018 JP



Blue Canyon: July 4, 2015



Blue Canyon: October 21, 2015





Vegetation Management Plans

Allows private landowners to enter into a contract with CAL FIRE to participate in fuel reduction projects. (RM-75)

▶ Benefits of the program:

▶ Limited liability for landowners (CAL FIRE assumes liability)

▶ **INDEMNIFICATION**: State Agency agrees to indemnify and hold harmless the Cooperator against liability for damages of any nature arising out of State Agency's performance of the Prescribed Burning Project. (Exhibit C of the contract)

▶ Environmental Impact Report (EIR) Checklist

▶ Cost share program (cost benefit analysis)

▶ Determined during assessment

▶ Landowners can provide "like kind" resources for portion of agreement.

QUALITY IS BETTER THAN QUANTITY

Calfire Fresno County goal of 2,000
VMP acres treated annually

SCE goal of 1,000 total (VMP and SCE)
acres treated annually

SCE Forestry Concerns:

1. Liability
2. Oversight
3. Quality
 1. Burns should not be acreage driven
 2. Firefighter vs Firelighter



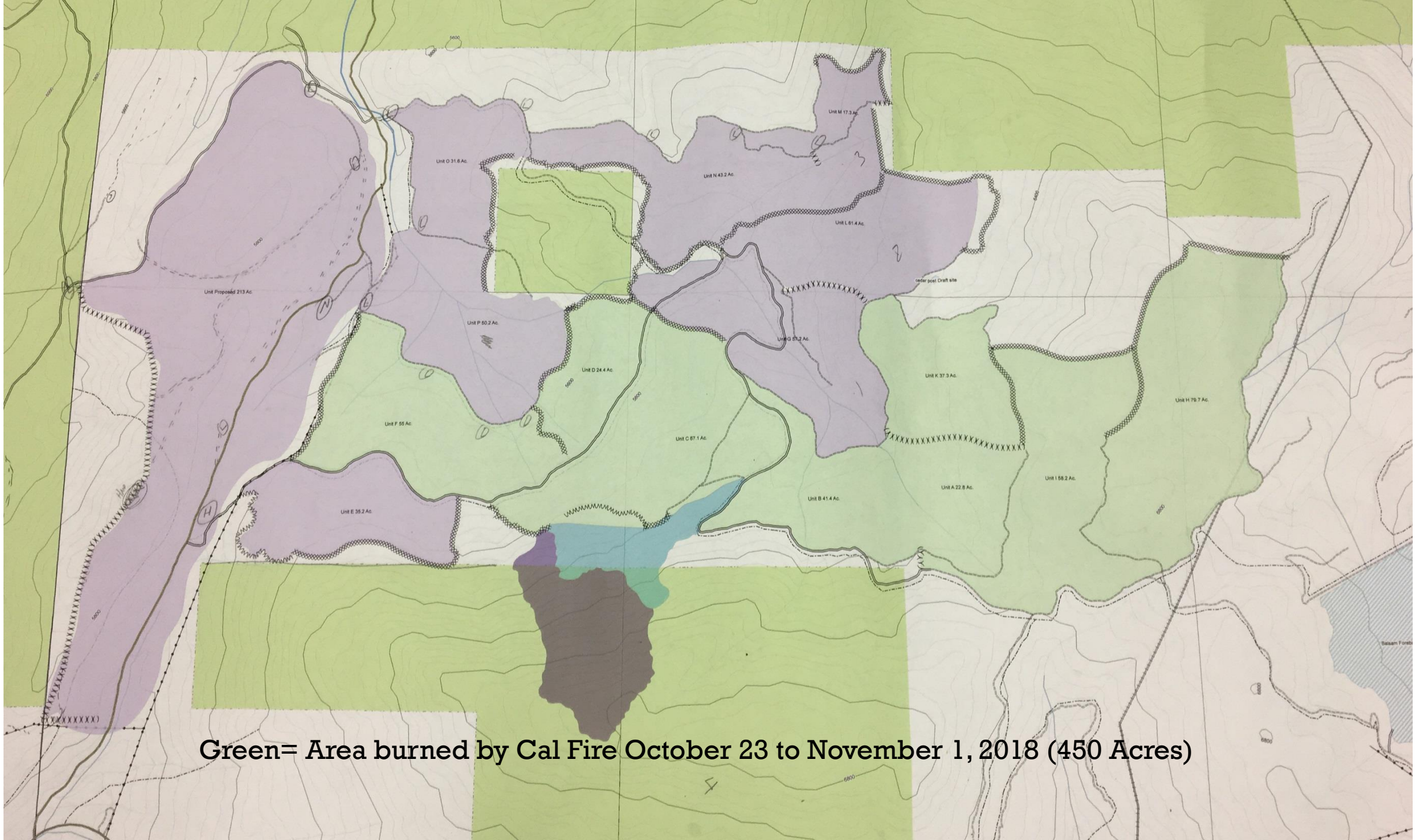
CALFIRE VMP RX BURN 2018

“Assigned to the VMP were 5 Engine Companies, two Fire Crews, one Bulldozer, and four Overhead.”

About 50 personnel







Green= Area burned by Cal Fire October 23 to November 1, 2018 (450 Acres)

- Unit M 17.3 Ac
- Unit N 43.2 Ac
- Unit L 61.4 Ac
- Unit O 31.8 Ac
- Unit Proposed 213 Ac
- Unit P 60.2 Ac
- Unit D 24.4 Ac
- Unit G 57.2 Ac
- Unit K 37.3 Ac
- Unit H 76.7 Ac
- Unit F 55 Ac
- Unit C 67.1 Ac
- Unit A 22.8 Ac
- Unit I 88.2 Ac
- Unit E 35.2 Ac
- Unit B 41.4 Ac



SCE & CALFIRE VMP BROADCAST BURNING

Acres Treated

	<u>SCE</u>	<u>CalFire</u>	<u>Total</u>	<u>Timing</u>
2017	550	145	695	Spring/Fall
2018	200	450	650	Fall
2019	Over 1000 acres prepped			Fall



BENEFITS

- Cost savings
- Increased acreage treated
- Trust
 - Increased burn windows
 - Encouraged to burn more
 - Better communication, less wildland dispatches
- Nice being friends with the big guy in school
 - Expanded area for burning
 - Frees SCE group up for more technical burning
- CalFire is gaining experience, and confidence
- Quality burning used on other VMPs



TAKEAWAYS

Fire Use on Private Lands:

You don't have to be a huge agency to get things done.

The more you burn the easier it gets.

VMP:

We are happy with the results and the relationship.

Support from local CalFire unit leadership is critical.

