

Welcome!

Sustainable Vegetable Gardening, part 4

March 15, 2020

UC Master Gardeners of Napa County



Today's Topics:

Warm season Veggies and IPM

Garden Structures

Crop Rotation



University of California

Agriculture and Natural Resources

■ UCCE Master Gardener Program

Warm season vegetables

- Tomatoes
- Peppers
- Eggplant
- Squash
- Beans
- Cucumbers
- Corn
- Melons...and more

Tomatoes



Determinate vs indeterminate



Planting tomatoes



Verticillium and fusarium wilts



Physiological conditions of tomatoes



Peppers



Sunscald

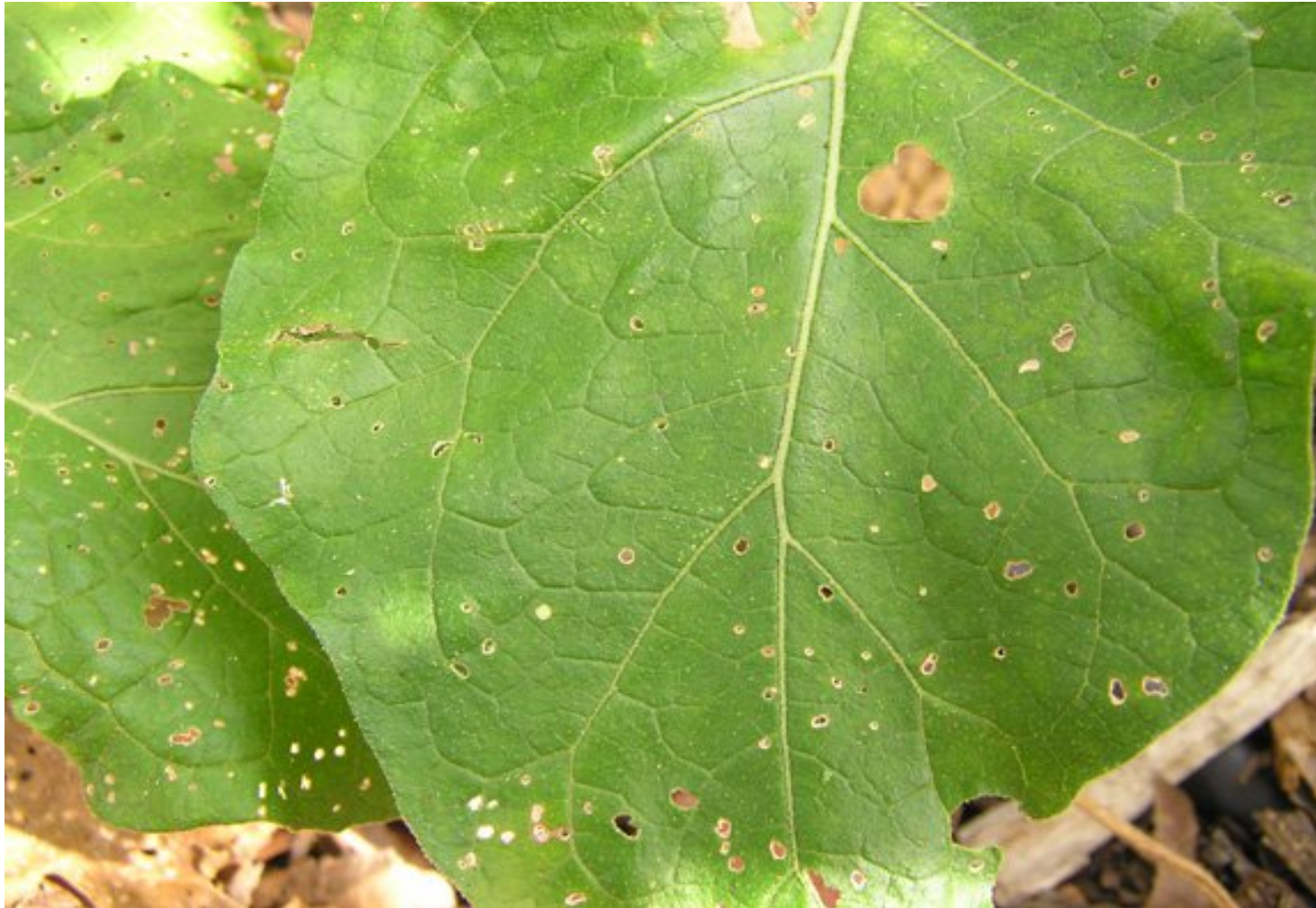


© 2007 University of Massachusetts Amherst

Eggplant



Flea beetle damage



Green beans, bush and pole



Mite damage to bean leaves



Corn



Corn earworm



Cucumbers



Cucumber beetle (spotted)



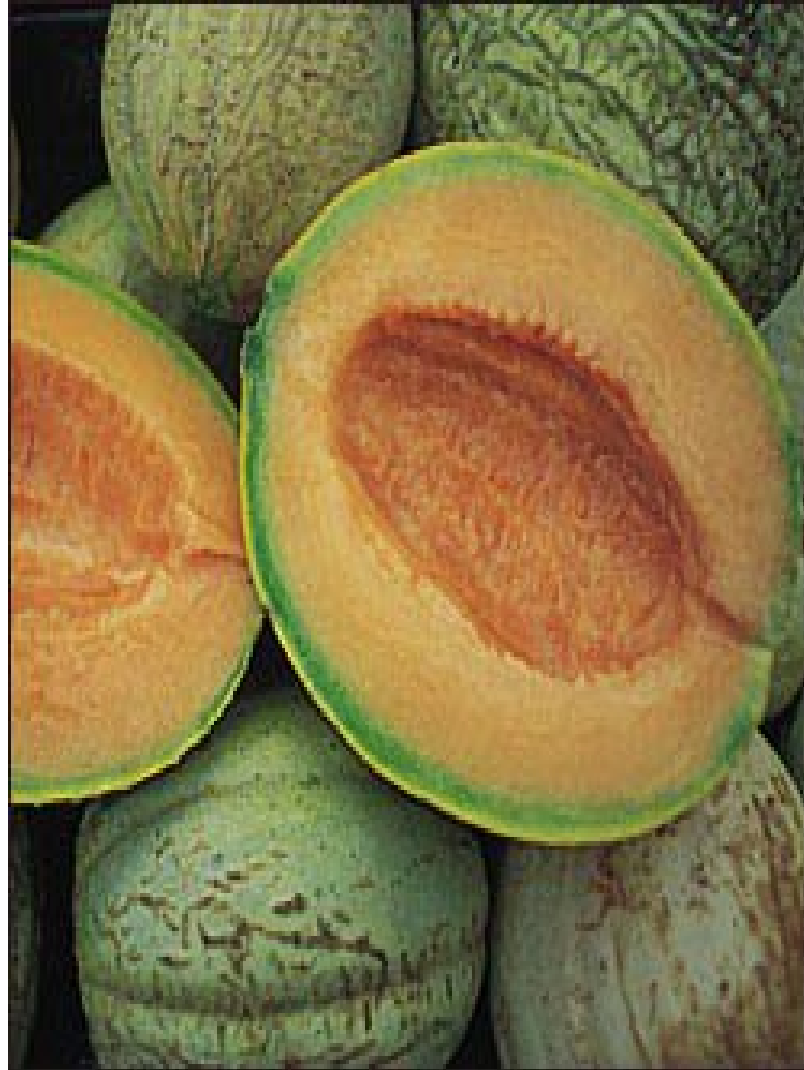
Summer squash



Squash blossoms



Melons



Powdery mildew



Winter squash: *Cucurbita*



Butter-
nut



Deli-
cata

Acor
n



Pump-
kins
C. pepo
C.



Squash bugs



How Do Structures Increase Productivity?



University of California

Agriculture and Natural Resources

■ UCCE Master Gardener Program

Protection from various problems and pests























Photo by Candace
Simpson







Benefits of Crop Rotation

Increase crop yields and improve soil fertility

Control pathogens (sometimes)

Improve soil tilth and aggregate stability



Crop characteristics to consider

Botanical family

Susceptibility to pest or
disease

Root, shoot, fruit?

Growing season



Botanical Families

1. Leguminosae (legumes: beans, including fava and lima beans, and peas)
2. Cruciferae (cabbage family plants; broccoli, kale, most Asian greens, radishes, and turnips)
3. Umbelliferae (carrot family: carrots, celery, parsnips, parsley)
4. Cucurbitaceae (cucurbits: cucumbers, melons, and all types of squash)
5. Solanaceae (nightshade family: tomatoes, sweet and hot peppers, eggplants, potatoes)
6. Amaryllidaceae (onion family: onions, garlic, leeks, asparagus)
7. Chenopodiaceae (spinach family: spinach, beets, chard)





Help Us Better Serve You!

Our follow-up survey provides us the tools we need to grow and improve the quality of our program.



University of California

Agriculture and Natural Resources

UCCE Master Gardener Program