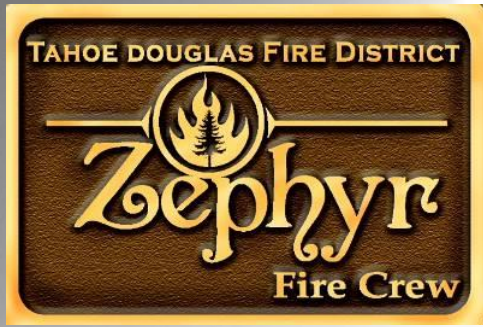




Defensible Space in the WUI

John Pickett – Tahoe Douglas Fire Protection District





Fuels Management Program

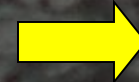


How do wildland-urban fire disasters occur?

Severe fire conditions



Wildland fire



Urban fire



(Fuel+wx
+ topo)

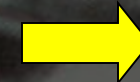
(Rapid spread +
high intensity)

(Simultaneous
home ignitions)

Fire protection resources



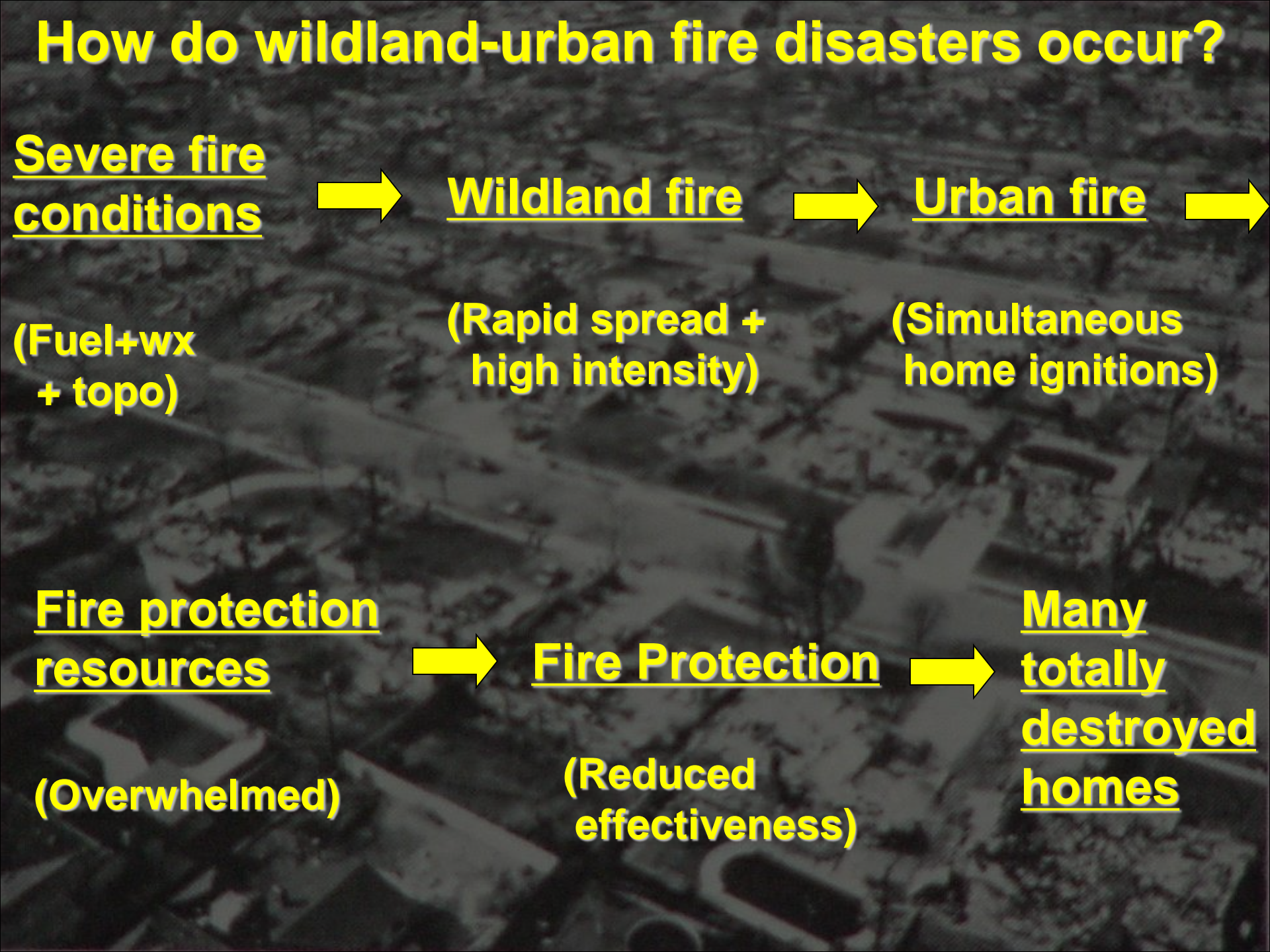
Fire Protection



Many
totally
destroyed
homes

(Overwhelmed)

(Reduced
effectiveness)

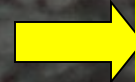


How do wildland-urban fire disasters occur?

Severe fire conditions



Wildland fire



Urban fire

(Simultaneous home ignitions)

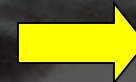
(Fuel+wx + topo)

(Rapid spread + high intensity)

Fire protection resources



Fire Protection



Many totally destroyed homes

(Overwhelmed)

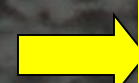
(Reduced effectiveness)

How do wildland-urban fire disasters occur?

Severe fire conditions



Wildland fire



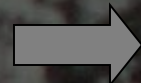
(Fuel+wx
+ topo)

(Rapid spread +
high intensity)

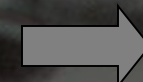
Urban fire

(Simultaneous
home ignitions)

Fire protection resources



Fire Protection



Many
totally
destroyed
homes

(Overwhelmed)

(Reduced
effectiveness)

Crown Fire



Extreme Fire Behavior



Flank of the Fire – No Defensible Space



Flank of the Fire – Pine Needles and Decks



Surface Fuels with Perfect Construction



Home Resiliency



The Non-Combustible Zone



Maintaining the Lean Clean and Green Zone



The Lean Clean and Green Zone



Success of Defensible Space



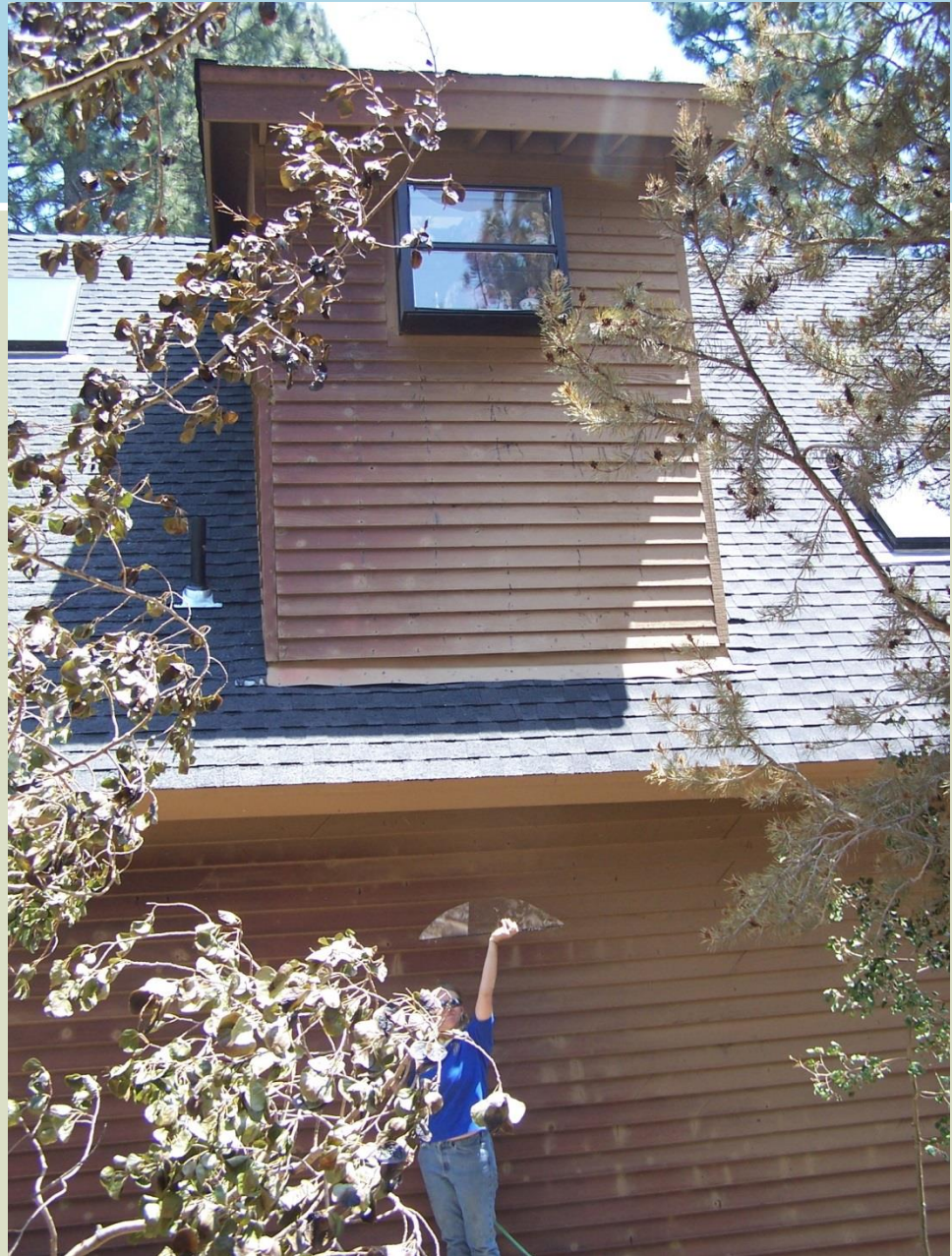
Wood Siding Can Be Fire Safe Siding - Maintenance



Class A Roofing Melted into BMP's – But no Ignition



Window Failure from Radiant Energy – No Ember Intrusion into the Structure



Education



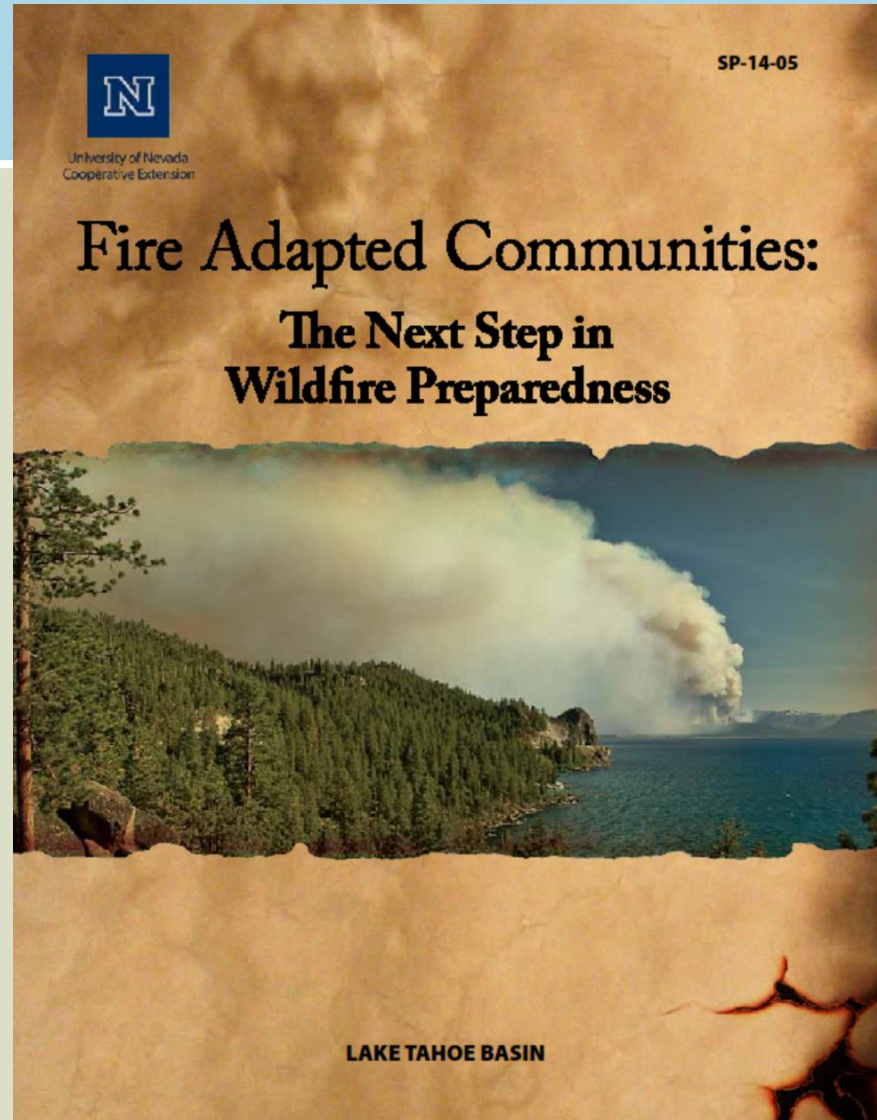
University of Nevada
Cooperative Extension

Well Known

Vetted with TRPA

Customized for the Lake
Tahoe Basin

Part of Cohesive Strategy



Burning Embers – Primary Ignition Source



Defensible Space Education

- Evaluations conducted in accordance with Living with Fire Guidelines

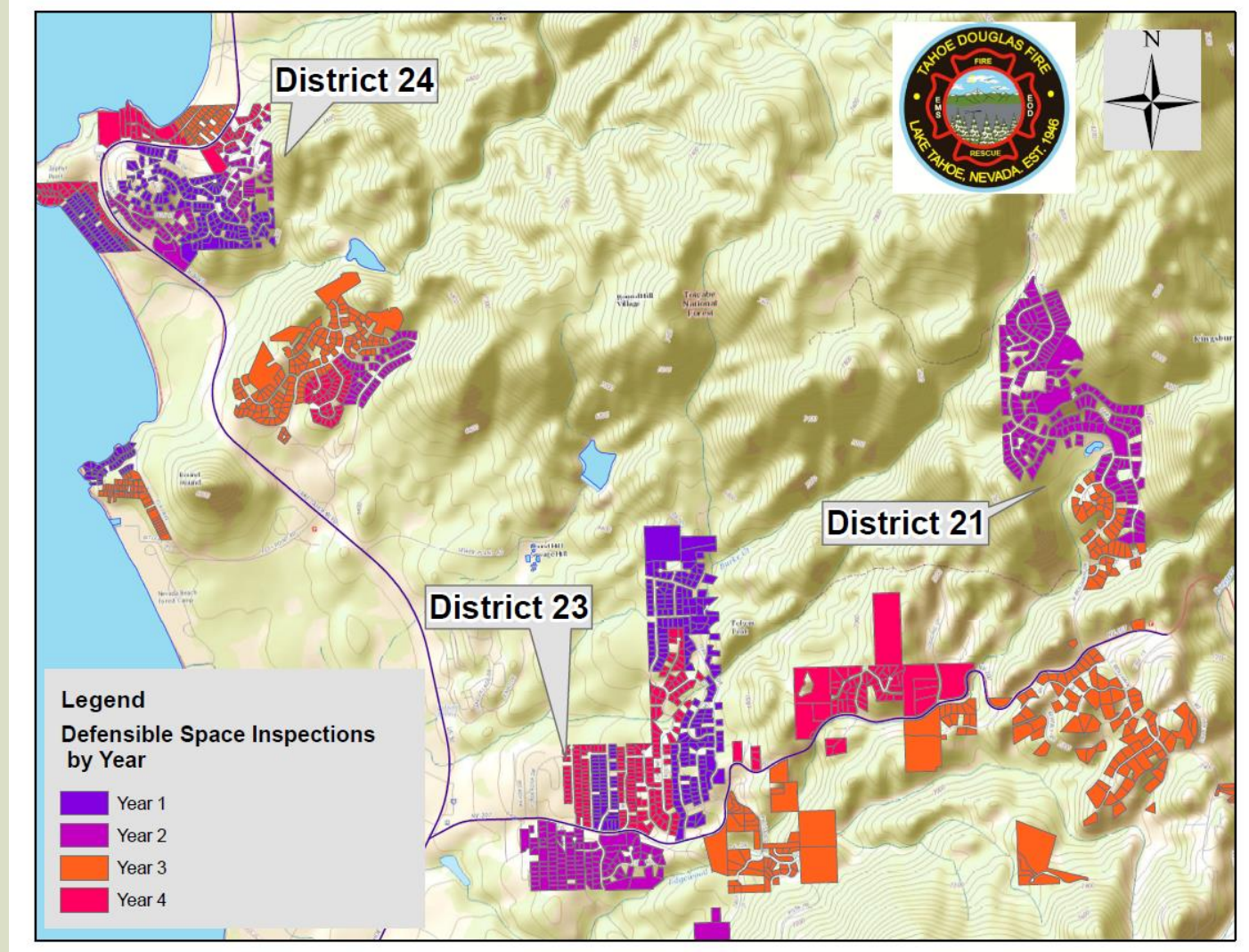
- Recommendations made in accordance with IWUI Code, but no enforcement started.

- Obtain a TRPA Tree Removal Permit if necessary

- Approximately 250 inspections annually



Defensible Space Enforcement



Curbside Defensible Space Enforcement

Established in 2010

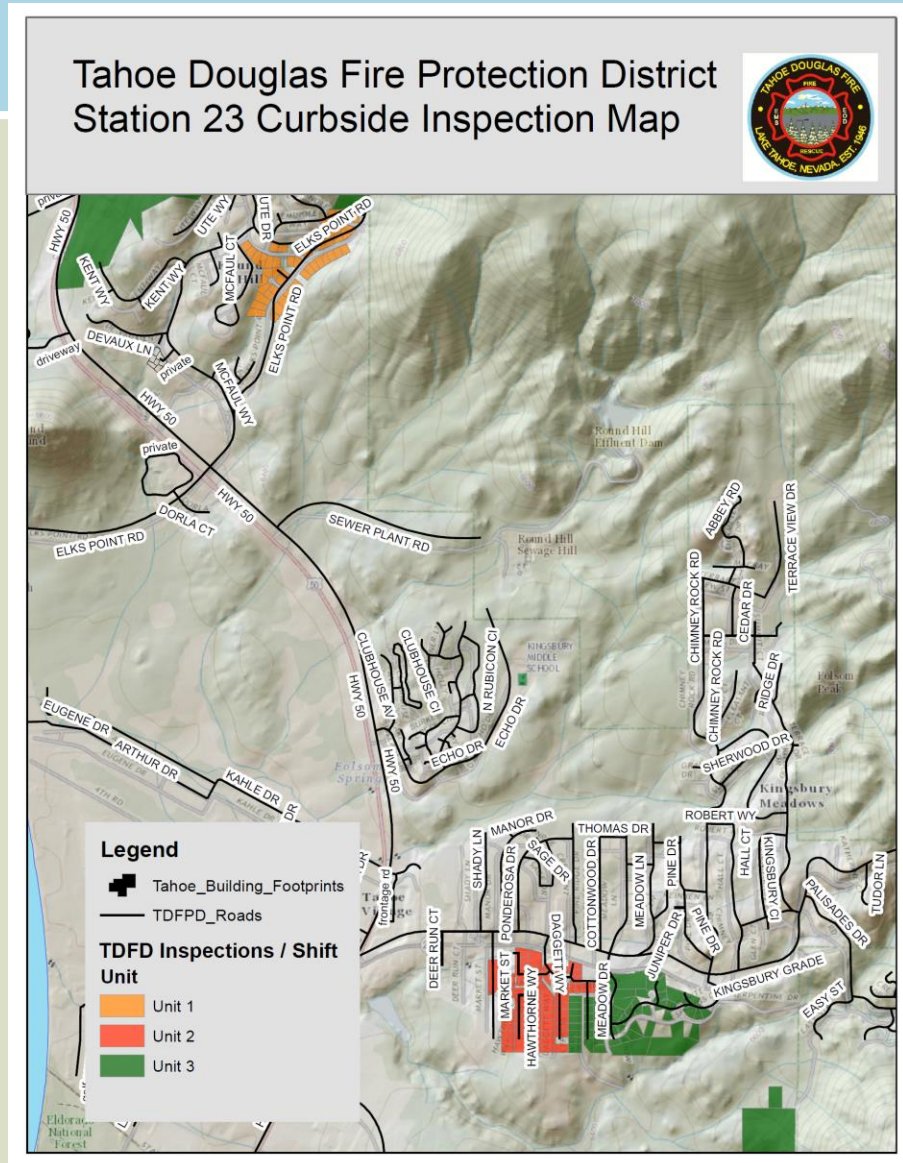
Operational in 2011

2500 Properties in the District

District Completed in 2015

Inspections repeat every four years

60 Properties currently in enforcement



Community Work Days

- Each of eight communities has a specified work day, generally June-August
- Zephyr Crewmembers help residents with chainsaw work and labor to create defensible space
- A publicly owned urban lot and several residential properties are treated in each community
- Chippers blanket the neighborhood



Community Pile Burning



Compost your Combustibles



Collaboration:

- Heavenly Mountain Resort,
- South Tahoe Refuse
- Tahoe Village HOA
- F&B Inc.



Community Chipping Program

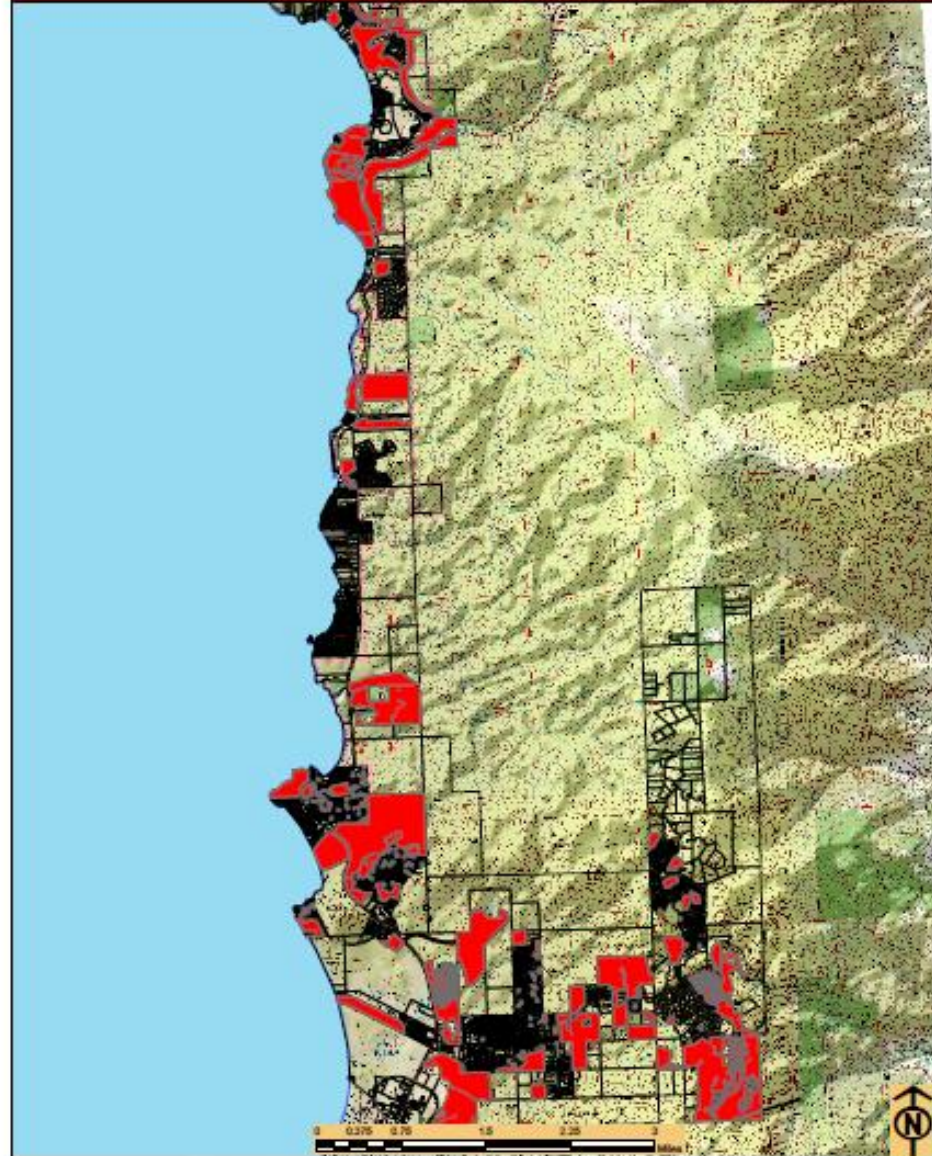


The Zephyr Fire Crew – Forest Thinning



Forest Thinning in the WUI

Tahoe Douglas Fire Protection District Priority Fuels Reduction Project Areas



Questions?

