

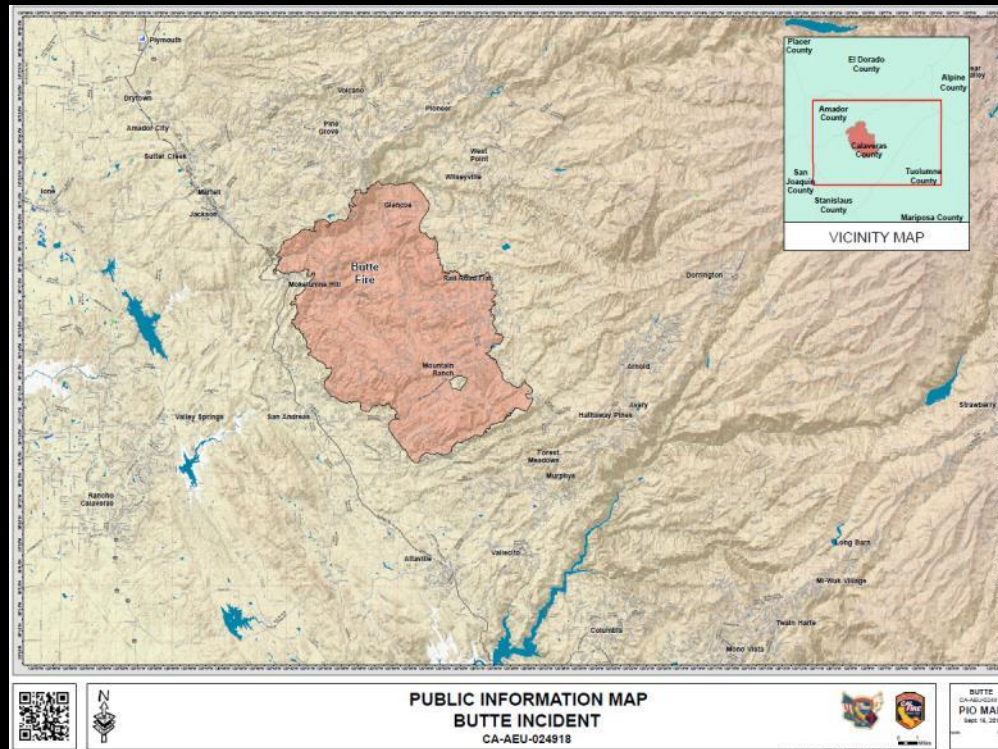
Recovering from Wildfire
Resources for Private Landowners
10/28/15

- Intro to Erosion Theory
 - Mitigation
 - Reforestation

Mark A. Egbert
CPESC# 6350
El Dorado County RCD
Georgetown Divide RCD
Placerville Field Office
530-295-5630
Mark.Egbert@ca.usda.gov

Acres Burned - Containment: 70,868 acres - 100% contained

Structures Destroyed: 475 residences, 343 outbuildings, 45 structures damaged



Field Level Circumstances & Challenges

- Recovery Process.
- Circumstances are unfortunate, unplanned, and immediate.
- Diverse demands with immediate needs.
- Limited available resources.
- Sequence of events.
- What level of planning and technical assistance do I need?





Placerville Rainfall From January 2015 – March 1, 2015
12.86"

Erosion

is the process in which, by the actions of wind or water, soil particles are detached and transported.

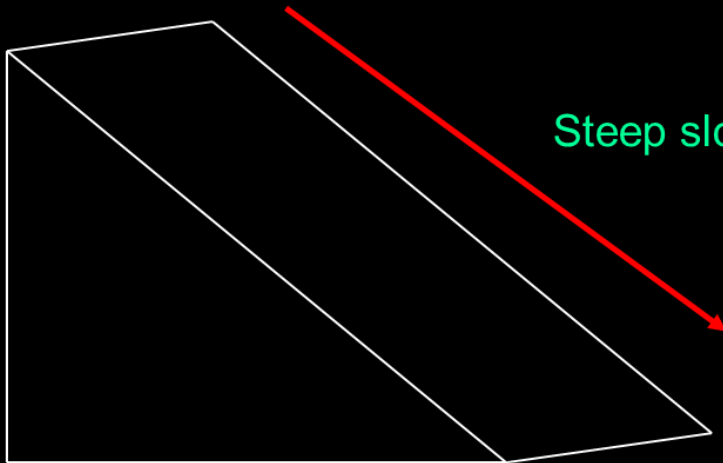
Sedimentation

is the deposition of eroded material.



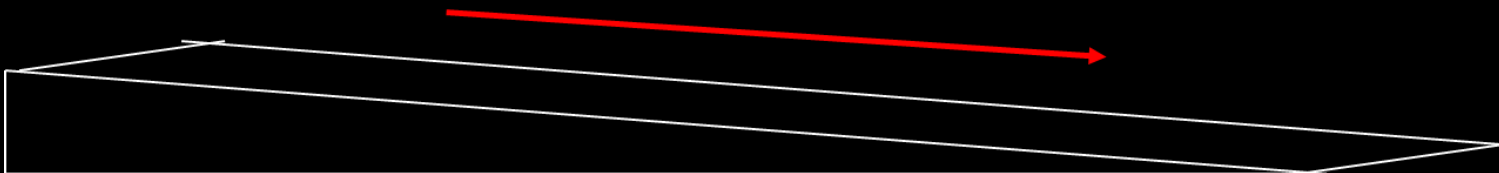
Erosion rates are affected by:

- Soil type (erodibility factor)
 - Cover (vegetation)
 - Slope
 - Water (Rain)
- Practice (BMP)



Steep slope accelerates runoff

Long run accumulates and concentrates runoff





























Sequence of Events

Long term:

- Falling trees
- Continued soil loss.
- Vegetative succession.
- Noxious weeds.

Sequence of Events

Natural Regeneration vs. Assisted

- Emergency Salvage.
- Slash / Fuel Treatment.
 - Site Prep.
 - Reforestation.
 - Release.





This picture illustrates a common situation where PG&E felled trees in ROW and left them on the ground. Site preparation should include removing downed and standing dead trees, while providing for wildlife habitat. Potential for utilization will be assessed at the time of clearance.



Standing dead trees and downed trees create a potential future fire hazard. Site preparation requires removal and disposal or use for biomass energy generation. This will facilitate planting and reduce fuel loads.



Another illustration of the wide-spread condition of large amounts of fallen trees and residual dead un-merchantable trees that will need to be cleared.



A substantial area has been salvage logged. Some owners have chosen to include slash disposal/site preparation in their contracts. Others have not.



There are some instances where living trees are still present.



An example of a salvage operation where complete slash disposal was required. This site is ready to plant. Limited snags and downed wood were retained. Note burn pile.



Another example of a salvaged area where complete slash disposal was required. Utilization of un-merchantable trees and woody residues for biomass will be considered in this project.



Salvaged area with streamside management area. Note adjacent unlogged area that represents a potential threat to any plantation on this land.



Areas dominated by brush prior to the fire will regenerate to brush unless reforestation is done quickly. Former forest sites are susceptible to brush invasion.



Substantial areas of the Sand Fire were formerly occupied by brush and oak-dominated communities. These communities are not associated with productive timber soils. The affected areas will not be prioritized for treatment in this project but their natural recovery, which is already underway, will contribute to future fire hazard. If adjacent to areas that are reforested, this will pose a risk to the assets.



Juxtaposition of untreated areas with newly planted areas will create a situation of future wildfire threat and loss of assets.



Areas of steep slopes cleared for planting may require erosion control measures. Individual landowners may apply for EQIP funds to implement these measures.



TO PLACE AN ORDER

- Orders are accepted no later than October 1st of each year for Sugar pine, and no later than December 1st for all other species.
- Order by mail using the enclosed Order Form. Fax at 530-295-5635 or by phone at (530) 295-5630.
- 40% deposit required at time of order.
- Cancellations will be accepted up to January 1st of each year.
- Minimum order is 200 trees/ species

SHIPPING AND HANDLING

- Seedlings are available for pick-up or delivery Prior to May 15th depending on weather conditions.
- Pick-up is available at the USDA Nursery in Placerville, CA. free-of-charge.
- Shipping charge is 15% of the order total with a minimum shipping charge of \$25.00.
- All UPS/ FedEx orders are shipped from the USDA Nursery on Mondays and Tuesdays.

TERMS AND CONDITIONS

- A \$20 service charge will be applied to all refunds except those caused by the nurseries' inability to deliver ordered seedlings.
- Full refund will be made, without penalty, in the event the RCD is unable to make delivery for any reason. No refunds after May 1st.
- It is agreed between the purchaser and the RCD that our liability will not exceed the original purchase price of the product excluding shipping costs.
- The RCD assumes no responsibility or liability for the planting of any tree seedlings and in the sale thereof, makes no warranties, expressed or implied, of merchantability or fitness for a particular purpose and makes no warranties regarding the survival or rate of growth of any seedlings.

Enabling Legislation

Division 9 of the PRC§9409 allows for the District to make improvements or conduct operations on public lands, with the cooperation of the agency administering and having jurisdiction thereof, and on private lands, with the consent of the owners thereof, in furtherance of the prevention or control of soil erosion, water conservation and distribution, agricultural enhancement, and erosion stabilization, including, but not limited to, terraces, ditches, levees, and dams or other structures, and the planting of trees, shrubs, grasses, or other vegetation

The forests of the Sierra Nevada are some of the most productive tree growing areas in the world. With careful thought and planning, you should be able to grow a healthy stand of trees that achieves your goals as a landowner. Reforestation and restoration projects yield better air and water quality, enhanced wildlife habitat, greater biodiversity and ecosystem sustainability, healthier forests, reduced soil erosion, and increased timber production.

A number of private tree nurseries can supply seedlings grown from parent trees native to the same elevation and geographical zone as your property (known as seed zones). Planting seedlings from the appropriate seed zone will ensure that they will tolerate the climate and soil type where you are.

All seedlings grown at the USFS Placerville Nursery are grown to USFS Region 5 specifications and shall meet phytosanitary certification regulations pertaining to shipments of trees.

Species	Top Height	Tolerance	Diameter	Tolerance	Root Length
All	10 cm	-3 cm	3 mm	-0.5 mm	20.5 to 26 cm max.
		+6 cm		+4 mm	

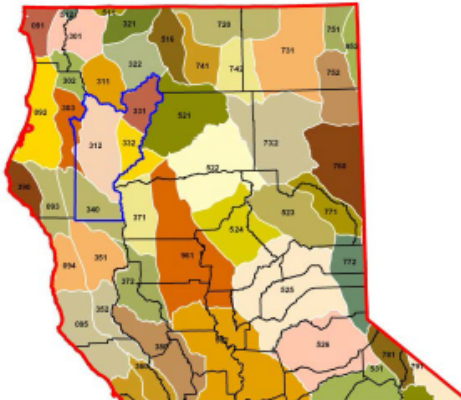


FOR QUESTIONS
OR TO ORDER SEEDLINGS, CONTACT:
Resource Conservation District
(530) 295-5630
100 Forni Road, Suite A.
Placerville, CA 95667



Seedling Order Form

CALIFORNIA TREE SEED ZONE MAP
NORTH HALF



Bare Root and Plug Seedling Price List - Effective 9/2015
Price per 1000 Seedlings

1 year plug seedlings (1P): \$444

- Douglas fir (DF)
- Sugar pine (SP)
- White fir (WF)
- Ponderosa pine (PP)
- Jeffrey pine (JP)
- Incense cedar (IC)
- Sierra redwood (SR)



1 year bare root seedlings (1B): \$350

- Douglas fir (DF)
- White fir (WF)
- Ponderosa pine (PP)
- Jeffrey pine (JP)
- Incense cedar (IC)
- Sierra redwood (SR)



2 year bare root seedlings (2B): \$390

- Douglas fir (DF)
- Sugar pine (SP)
- White fir (WF)
- Ponderosa pine (PP)
- Jeffrey pine (JP)
- Incense cedar (IC)
- Sierra redwood (SR)



Special Order

For any species, deeper plug container stock is available. Notes: Plug seedlings are grown one year in Styrofoam block. Prices do not include shipping costs. See order form

TECHNICAL ASSISTANCE

Landowners may receive free planning assistance for tree planting projects from the NRCS &/or RCD by contacting your local RCD office that serves their county.

SEEDLING ORDER FORM
RESOURCE CONSERVATION DISTRICT - EL DORADO COUNTY

RCD USE ONLY		USE <input type="checkbox"/> Reforestation <input type="checkbox"/> Erosion Control/Watershed Protection <input type="checkbox"/> Windbreak <input type="checkbox"/> Christmas Tree <input type="checkbox"/> Fuel Wood <input type="checkbox"/> Approved Research Project	Cost-Share Program? <input type="checkbox"/> NRCS <input type="checkbox"/> CALFIRE
Order #:			
Seed Zone:			
PLANTING SITE			
Nearest Town:	_____		
County:	_____		
Elevation:	_____		
Customer Name and Billing Address:		Shipment:	<input type="checkbox"/> Pick-up at Nursery <input type="checkbox"/> Delivery
		Customer Shipping Address:	
EMAIL: _____			
Cell Phone: _____			
Other Phone: _____			

Seed Availability (RCD USE)	Seed Source (RCD USE)	Stock Type	Quantity	Seedling Cost (Unit)	Seedling Cost

Sales Tax Exemption? Attach documentation. Subtotal: _____

Sales Tax (8%): _____

Mail this order form with check payable to: Shipping Cost: _____

El Dorado County Resource Conservation Districts Total Cost: _____

100 Forni Road, Suite A 40% Deposit: _____

Placerville, CA 95667 Date Deposit Received: _____

(phone) 530-295-5633 Balance: _____

(fax) 530-295-5635 Date Balance Received: _____

Signature: _____ Date: _____

Species Codes:		Stock Codes:	
Species	Code	Stock Type	Code
Douglas fir	DF	One year plugs	1P
Sugar pine	SP	One year bare root	1B
White fir	WF	Two year bare root	2B
Ponderosa pine	PP	Special order	SO (consult with RCD)
Jeffrey pine	JP		
Incense cedar	IC		
Sierra redwood	SR		



Thank You

www.eldoradorcd.org

Mark A. Egbert

CPESC# 6350

El Dorado County RCD

Georgetown Divide RCD

Placerville Field Office

530-295-5630

Mark.Egbert@ca.usda.gov