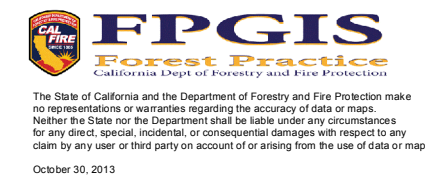


Vegetative Burn Severity - Rim Fire

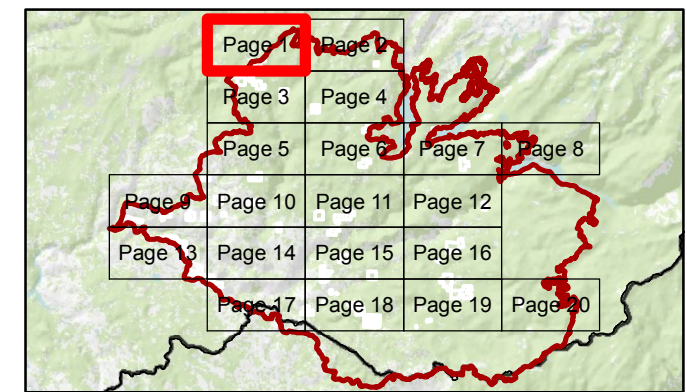
Reference for Private Non-industrial Landowners - Map Page 1

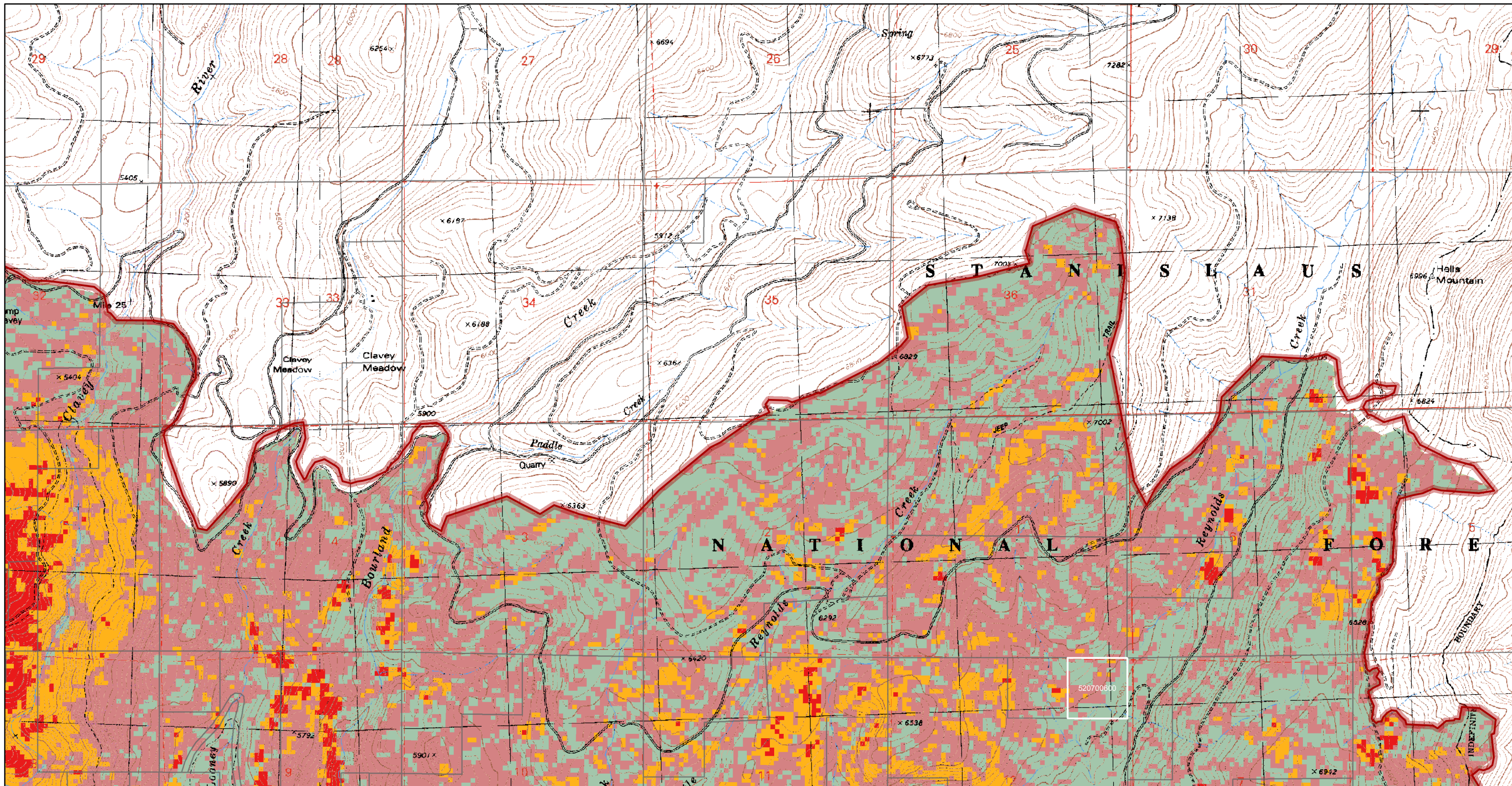


The Rapid Assessment of Vegetation Condition after Wildfire (RAVG) is generated by the USFS; the basal area loss summary is produced by a change detection process using two Landsat Thematic Mapper (TM) images captured before and after a wildfire.

RAVG is considered an initial assessment, which describes initial vegetation mortality (typically 30 days post-fire containment), but does not capture delayed vegetation mortality.

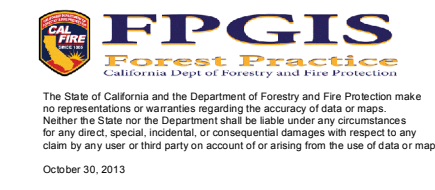
- Vegetative Burn Severity**
- 0 - 25% Basal Area Loss
 - 25 - <50% Basal Area Loss
 - 50 - <75% Basal Area Loss
 - 75 - 100% Basal Area Loss
 - Non Industrial Private Landowner
 - Parcel Boundary
 - County Boundary
 - Fire Perimeter as of 9/26/13





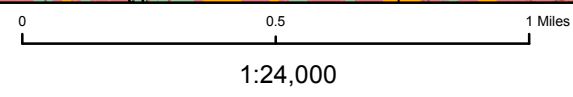
Vegetative Burn Severity - Rim Fire

Reference for Private Non-industrial Landowners - Map Page 2

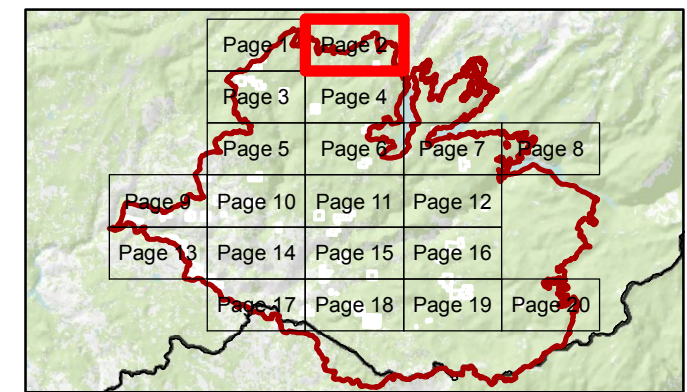


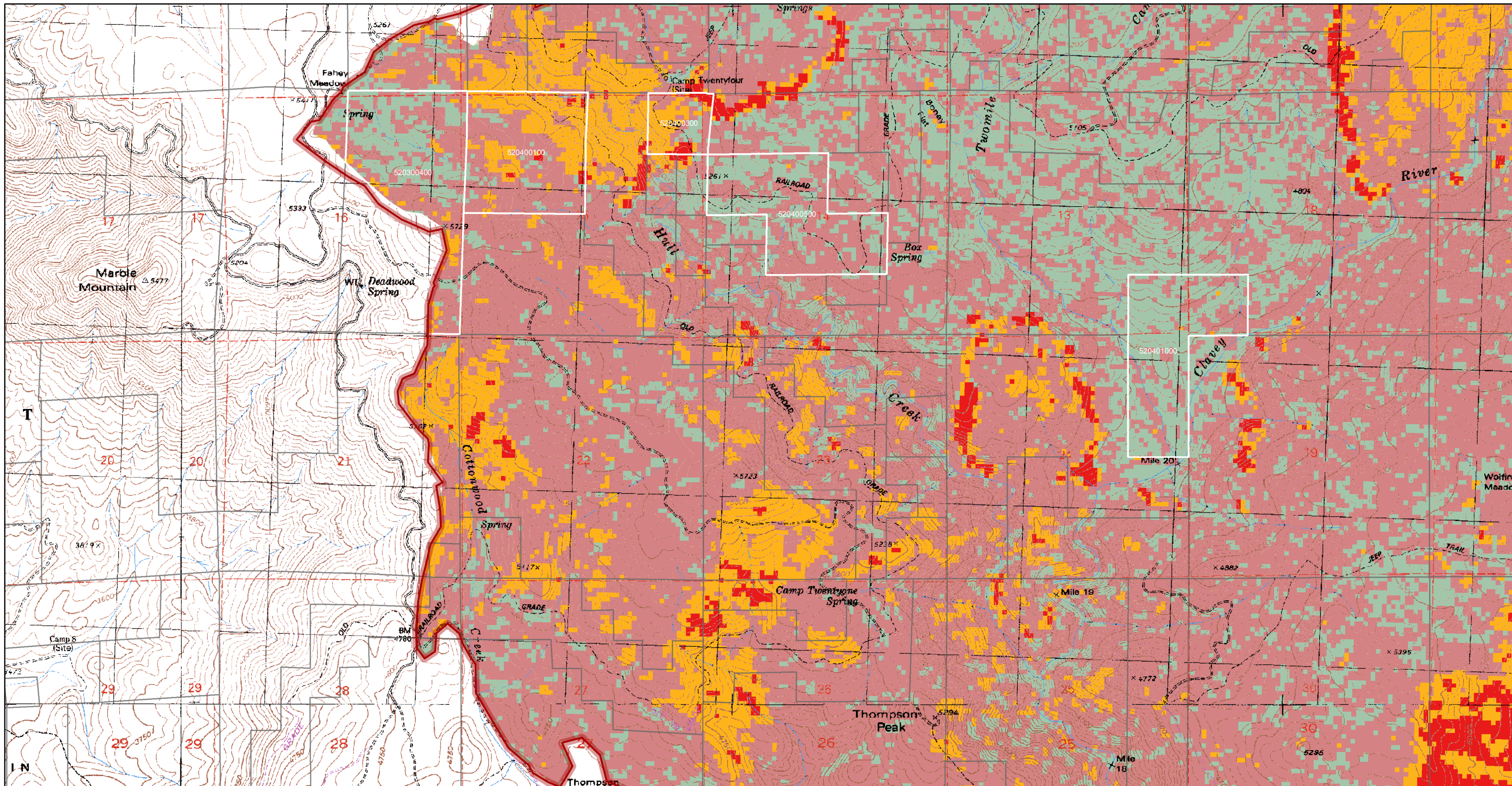
The Rapid Assessment of Vegetation Condition after Wildfire (RAVG) is generated by the USFS; the basal area loss summary is produced by a change detection process using two Landsat Thematic Mapper (TM) images captured before and after a wildfire.

RAVG is considered an initial assessment, which describes initial vegetation mortality (typically 30 days post-fire containment), but does not capture delayed vegetation mortality.



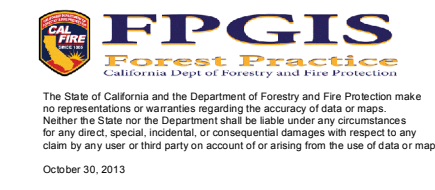
- Vegetative Burn Severity**
- 0 - 25% Basal Area Loss
 - 25 - <50% Basal Area Loss
 - 50 - <75% Basal Area Loss
 - 75 - 100% Basal Area Loss
- Map Features**
- Non Industrial Private Landowner
 - Parcel Boundary
 - County Boundary
 - Fire Perimeter as of 9/26/13





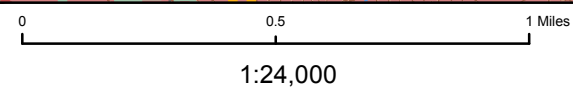
Vegetative Burn Severity - Rim Fire

Reference for Private Non-industrial Landowners - Map Page 3

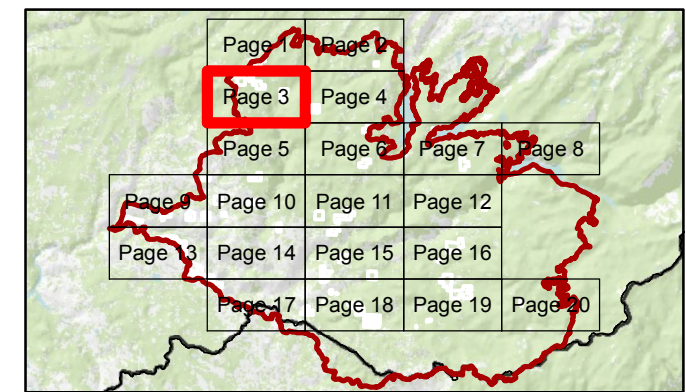


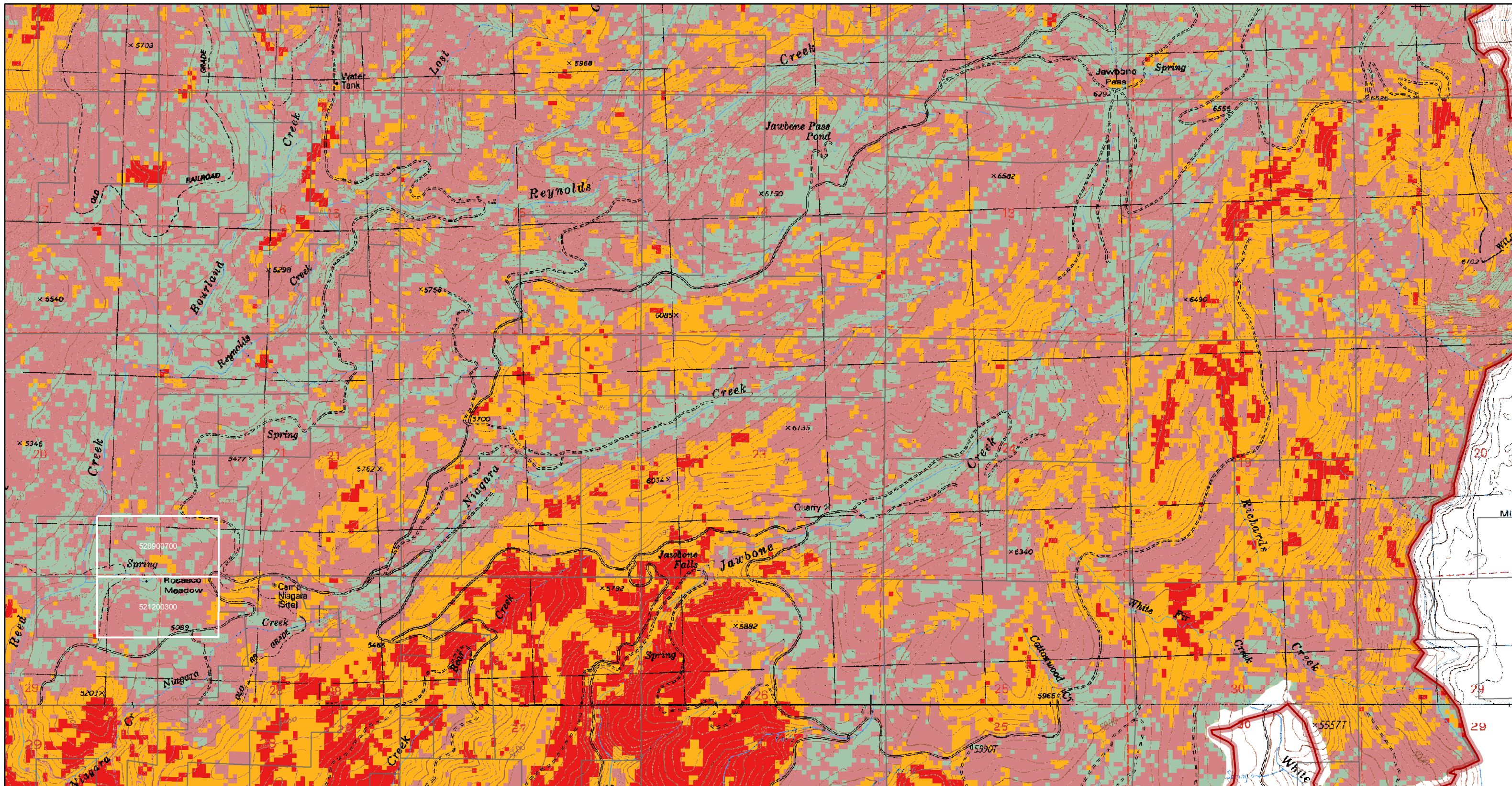
The Rapid Assessment of Vegetation Condition after Wildfire (RAVG) is generated by the USFS; the basal area loss summary is produced by a change detection process using two Landsat Thematic Mapper (TM) images captured before and after a wildfire.

RAVG is considered an initial assessment, which describes initial vegetation mortality (typically 30 days post-fire containment), but does not capture delayed vegetation mortality.



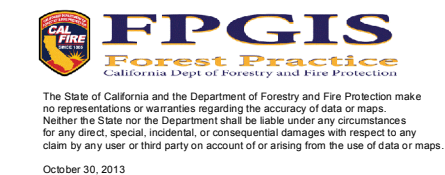
- Vegetative Burn Severity**
- 0 - 25% Basal Area Loss
 - 25 - <50% Basal Area Loss
 - 50 - <75% Basal Area Loss
 - 75 - 100% Basal Area Loss
- Map Symbols**
- Non Industrial Private Landowner
 - Parcel Boundary
 - County Boundary
 - Fire Perimeter as of 9/26/13





Vegetative Burn Severity - Rim Fire

Reference for Private Non-industrial Landowners - Map Page 4



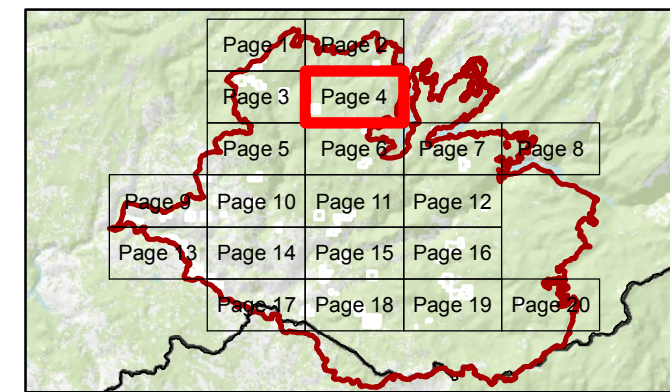
The Rapid Assessment of Vegetation Condition after Wildfire (RAVG) is generated by the USFS; the basal area loss summary is produced by a change detection process using two Landsat Thematic Mapper (TM) images captured before and after a wildfire.

RAVG is considered an initial assessment, which describes initial vegetation mortality (typically 30 days post-fire containment), but does not capture delayed vegetation mortality.

Vegetative Burn Severity

- 0 - 25% Basal Area Loss
- 25 - <50% Basal Area Loss
- 50 - <75% Basal Area Loss
- 75 - 100% Basal Area Loss

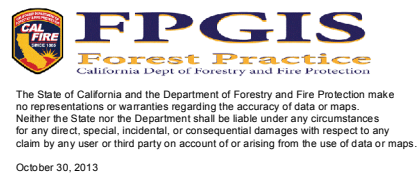
- Non Industrial Private Landowner
- Parcel Boundary
- County Boundary
- Fire Perimeter as of 9/26/13





Vegetative Burn Severity - Rim Fire

Reference for Private Non-industrial Landowners - Map Page 5



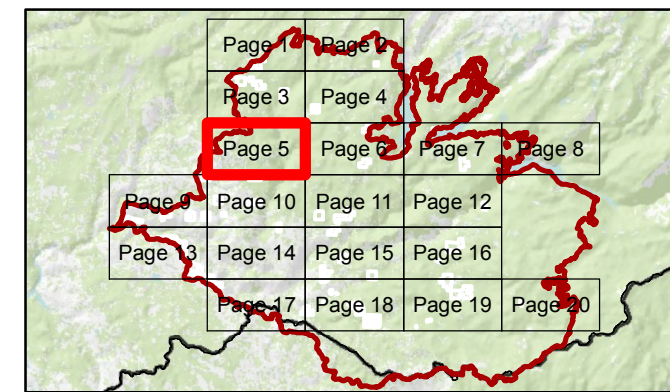
The Rapid Assessment of Vegetation Condition after Wildfire (RAVG) is generated by the USFS; the basal area loss summary is produced by a change detection process using two Landsat Thematic Mapper (TM) images captured before and after a wildfire.

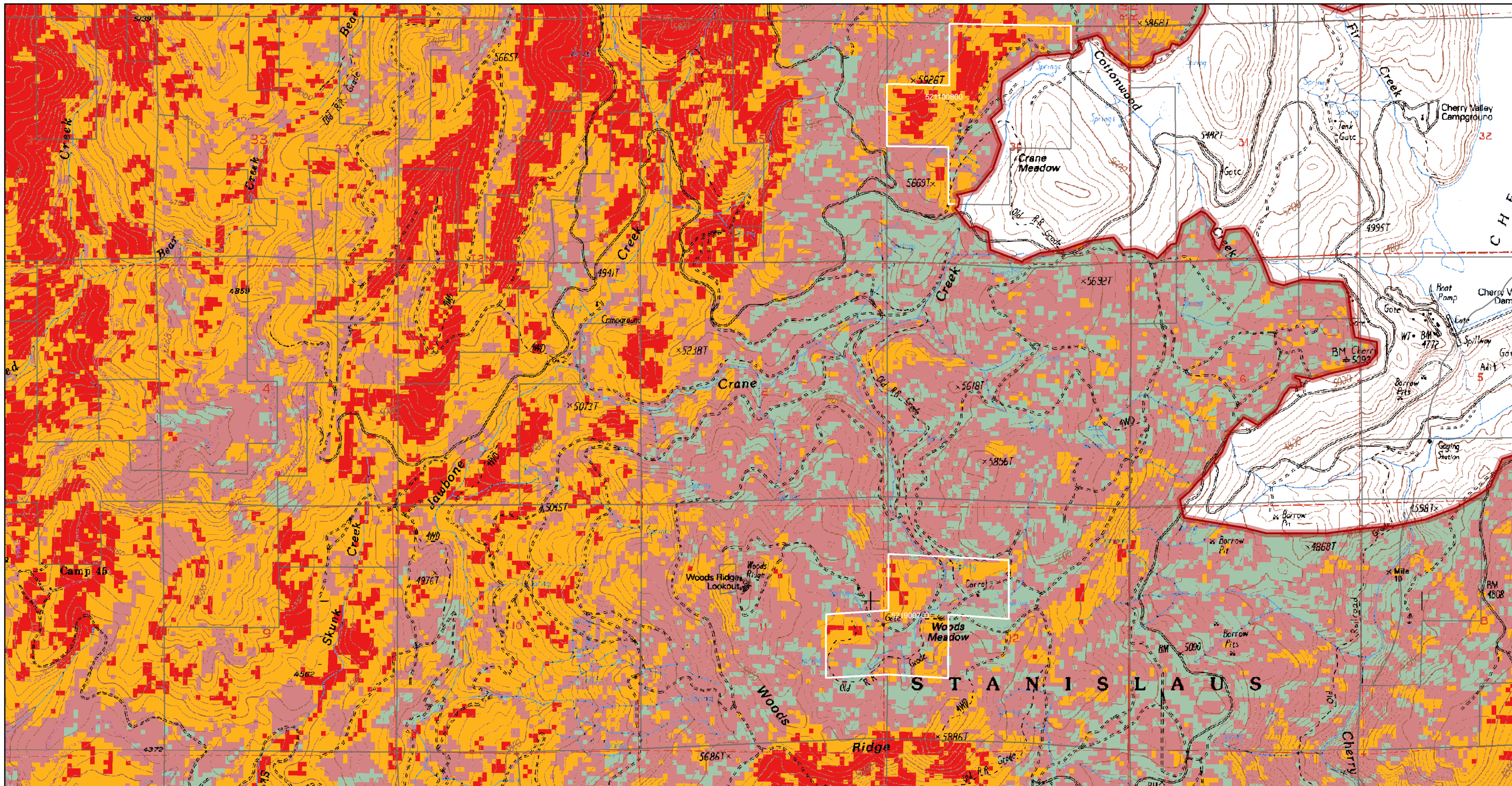
RAVG is considered an initial assessment, which describes initial vegetation mortality (typically 30 days post-fire containment), but does not capture delayed vegetation mortality.

Vegetative Burn Severity

- 0 - 25% Basal Area Loss
- 25 - <50% Basal Area Loss
- 50 - <75% Basal Area Loss
- 75 - 100% Basal Area Loss

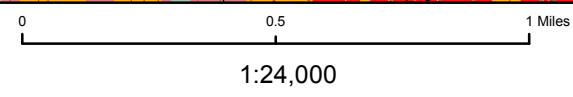
- Non Industrial Private Landowner
- Parcel Boundary
- County Boundary
- Fire Perimeter as of 9/26/13





Vegetative Burn Severity - Rim Fire

Reference for Private Non-industrial Landowners - Map Page 6



Vegetative Burn Severity

- 0 - 25% Basa Area Loss
- 25 - <50% Basa Area Loss
- 50 - <75% Basa Area Loss
- 75 - 100% Basa Area Loss

- Non Industrial Private Landowner
- Parcel Boundary
- County Boundary
- Fire Perimeter as of 9/26/13

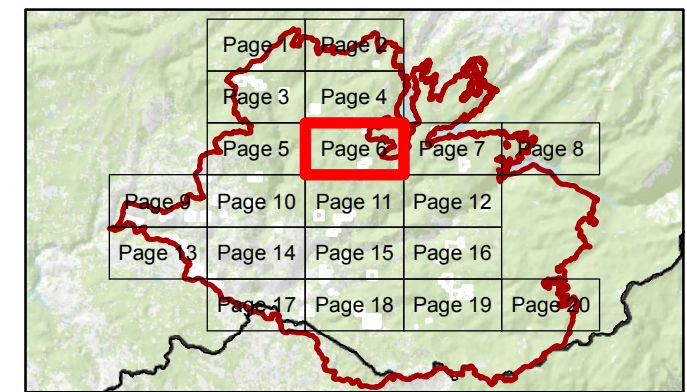
The Rapid Assessment of Vegetation Condition after Wildfire (RAVG) is generated by theUSFS; the basal area loss summary is produced by a change detection process using two Landsat Thematic Mapper (TM) images captured before and after a wildfire.

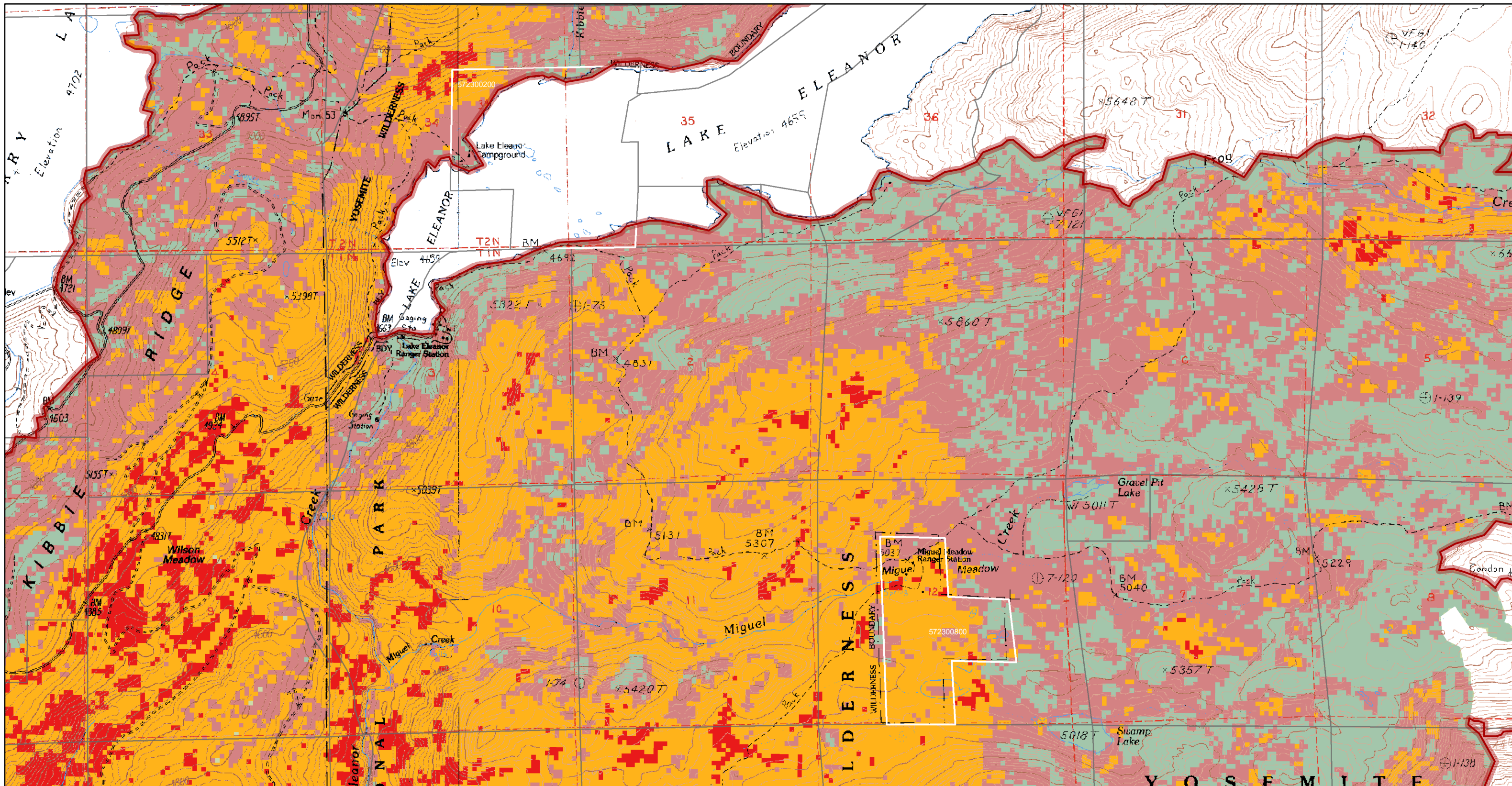
RAVG is considered an initial assessment, which describes initial vegetation mortality (typically 30 days post-fire containment), but does not capture delayed vegetation mortality.

FPGIS
Forest Practice
California Dept of Forestry and Fire Protection

The State of California and the Department of Forestry and Fire Protection make no representations or warranties regarding the accuracy of data or maps. Neither the State nor the Department shall be liable under any circumstances for any direct, special, incidental, or consequential damages with respect to any claim by any user or third party on account of or arising from the use of data or maps.

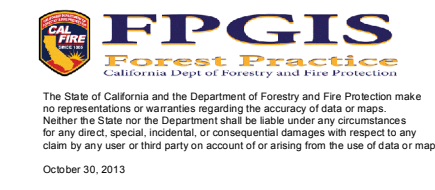
October 30, 2013





Vegetative Burn Severity - Rim Fire

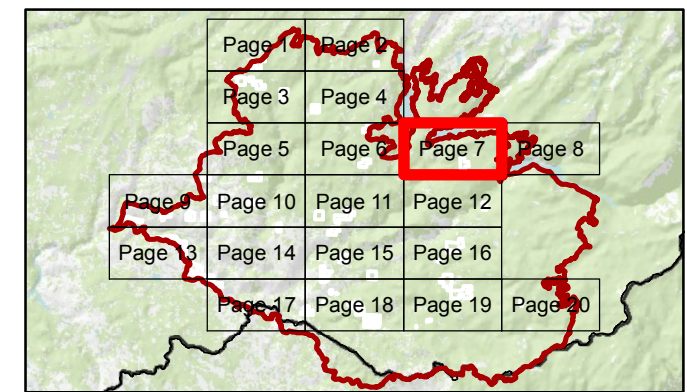
Reference for Private Non-industrial Landowners - Map Page 7

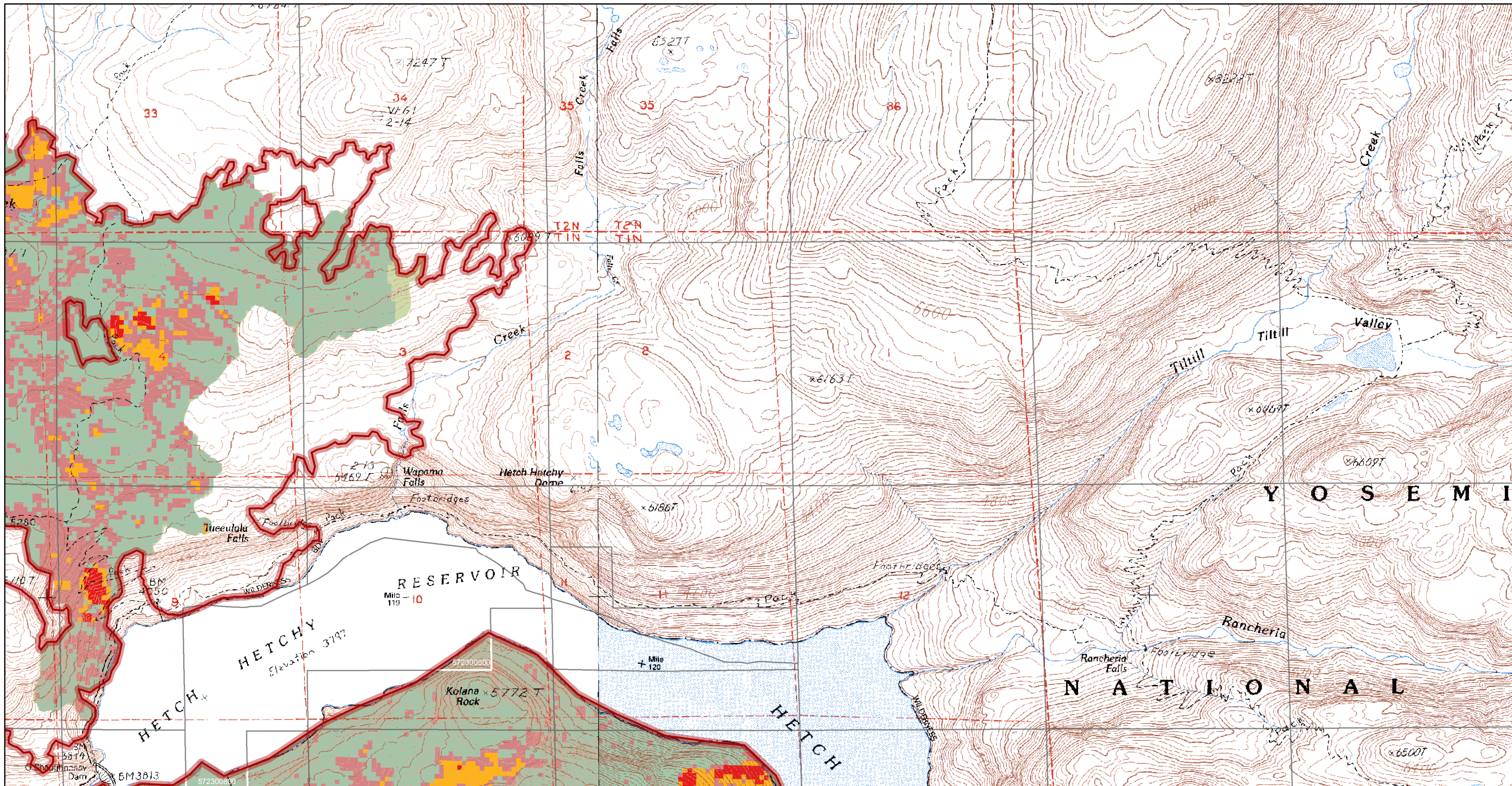


The Rapid Assessment of Vegetation Condition after Wildfire (RAVG) is generated by the USFS; the basal area loss summary is produced by a change detection process using two Landsat Thematic Mapper (TM) images captured before and after a wildfire.

RAVG is considered an initial assessment, which describes initial vegetation mortality (typically 30 days post-fire containment), but does not capture delayed vegetation mortality.

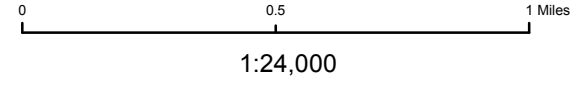
- Vegetative Burn Severity**
- 0 - 25% Basal Area Loss
 - 25 - <50% Basal Area Loss
 - 50 - <75% Basal Area Loss
 - 75 - 100% Basal Area Loss
 - Non Industrial Private Landowner
 - Parcel Boundary
 - County Boundary
 - Fire Perimeter as of 9/26/13





Vegetative Burn Severity - Rim Fire

Reference for Private Non-industrial Landowners - Map Page 8



The State of California and the Department of Forestry and Fire Protection make no representations or warranties regarding the accuracy of data or maps. Neither the State nor the Department shall be liable under any circumstances for any direct, special, incidental, or consequential damages with respect to any claim by any user or third party on account of or arising from the use of data or maps.

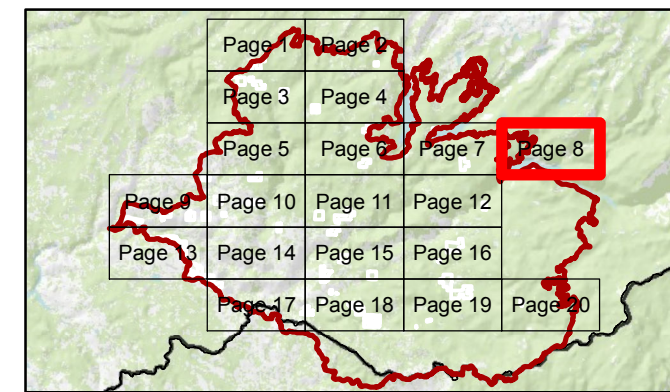
The Rapid Assessment of Vegetation Condition after Wildfire (RAVG) is generated by the USFS; the basal area loss summary is produced by a change detection process using two Landsat Thematic Mapper (TM) images captured before and after a wildfire.

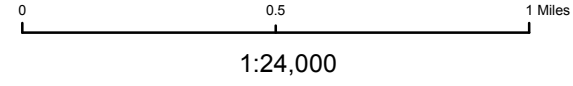
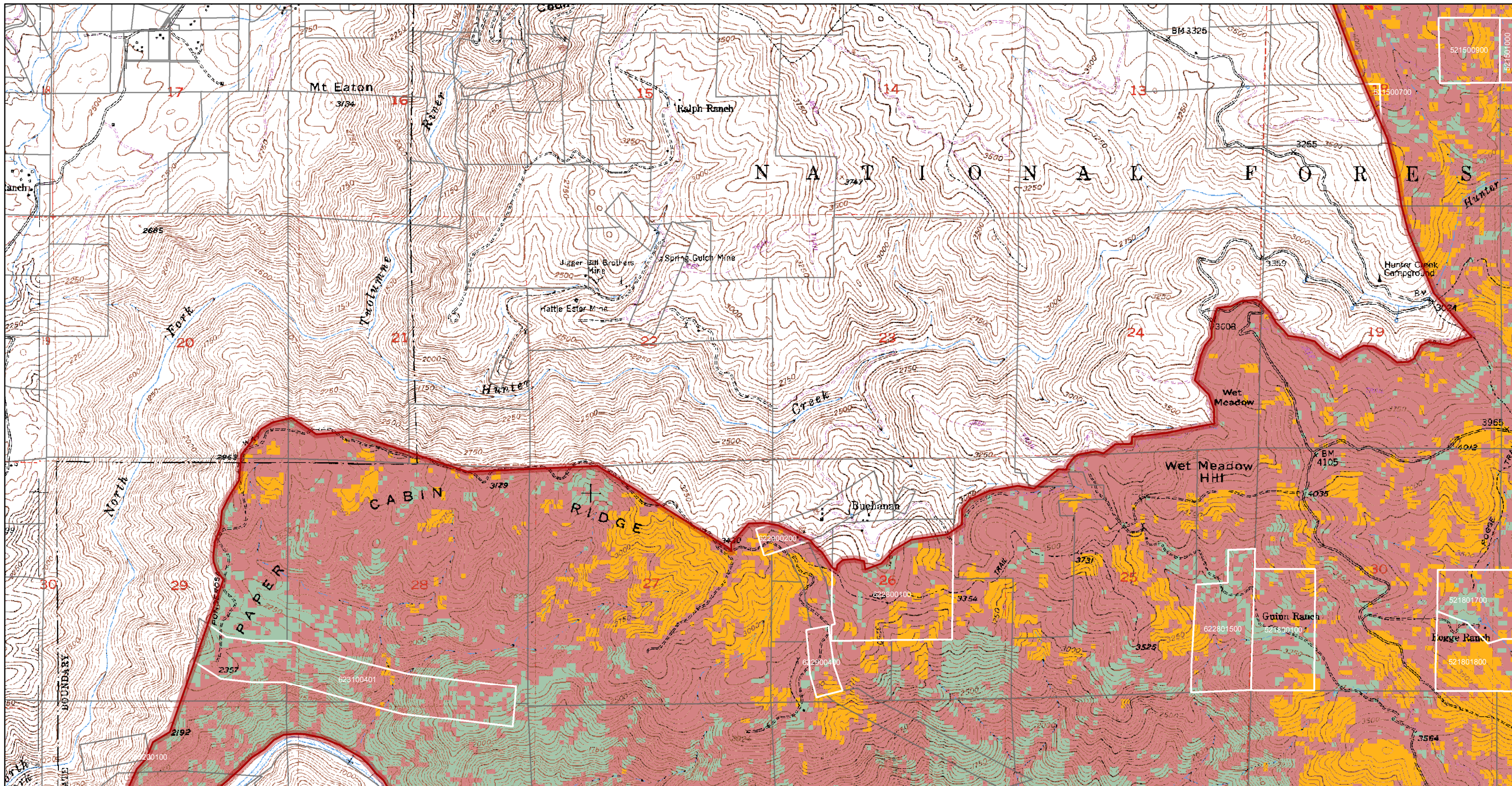
RAVG is considered an initial assessment, which describes initial vegetation mortality (typically 30 days post-fire containment), but does not capture delayed vegetation mortality.

Vegetative Burn Severity

- 0 - 25% Basa Area Loss
- 25 - <50% Basa Area Loss
- 50 - <75% Basa Area Loss
- 75 - 100% Basa Area Loss

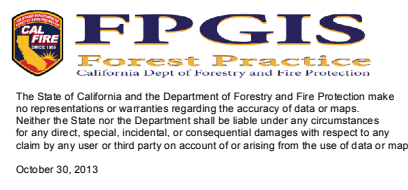
- Non Industrial Private Landowner
- Parcel Boundary
- County Boundary
- Fire Perimeter as of 9/26/13





Vegetative Burn Severity - Rim Fire

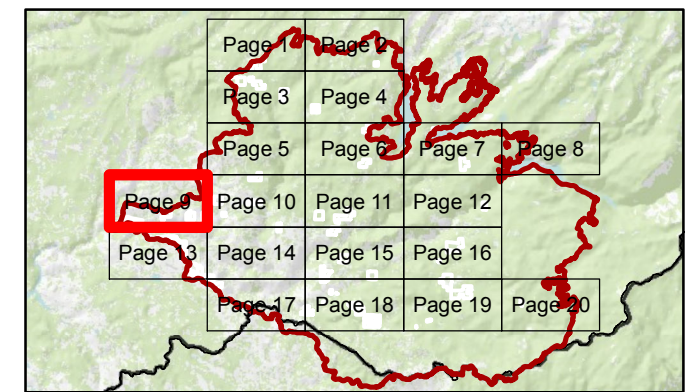
Reference for Private Non-industrial Landowners - Map Page 9

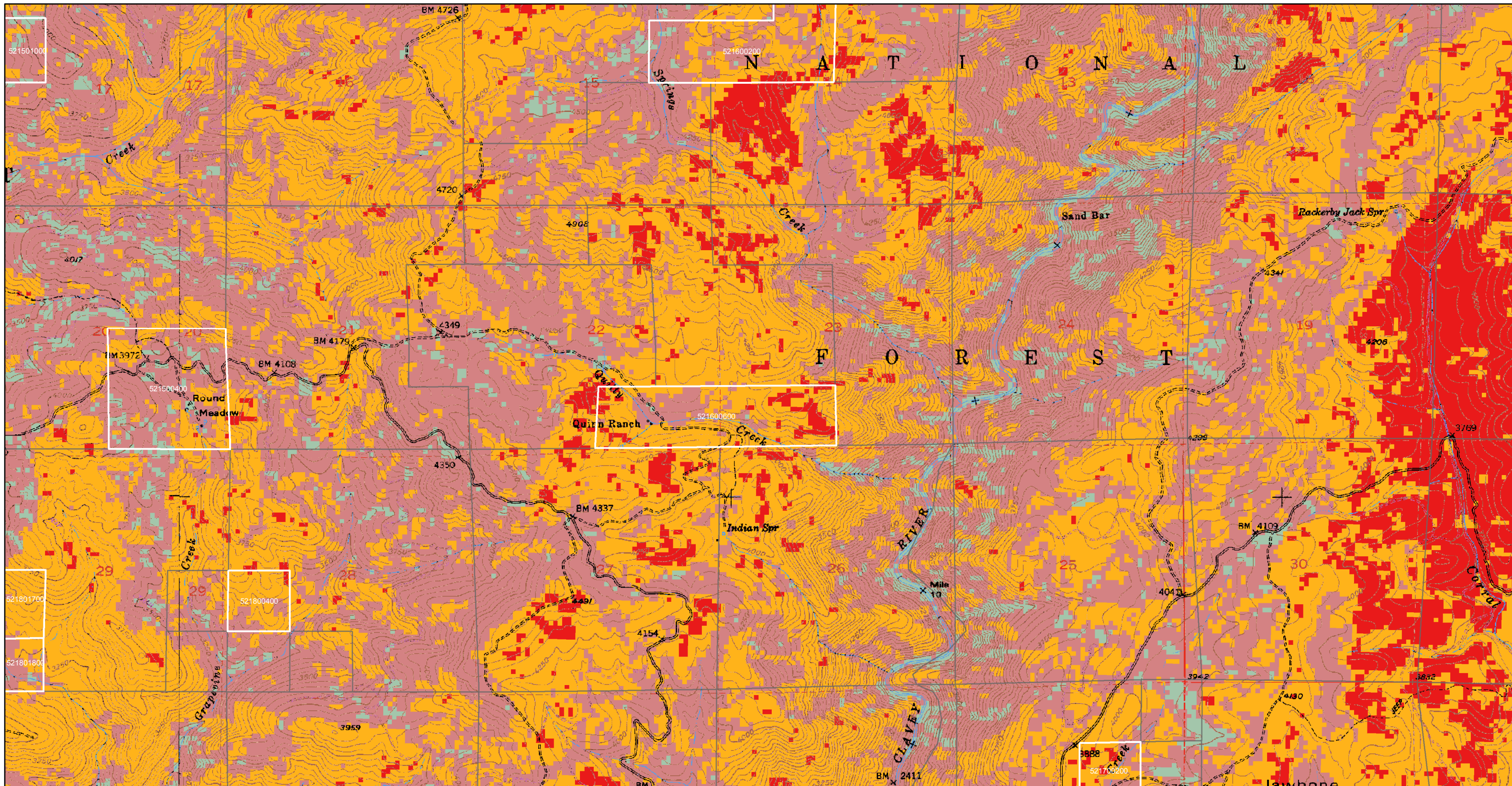


The Rapid Assessment of Vegetation Condition after Wildfire (RAVG) is generated by the USFS; the basal area loss summary is produced by a change detection process using two Landsat Thematic Mapper (TM) images captured before and after a wildfire.

RAVG is considered an initial assessment, which describes initial vegetation mortality (typically 30 days post-fire containment), but does not capture delayed vegetation mortality.

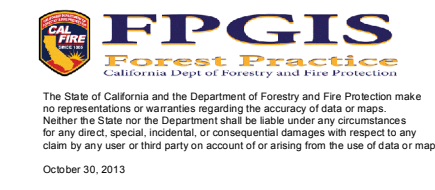
- Vegetative Burn Severity**
- 0 - 25% Basal Area Loss
 - 25 - <50% Basal Area Loss
 - 50 - <75% Basal Area Loss
 - 75 - 100% Basal Area Loss
- Map Symbols**
- Non Industrial Private Landowner
 - Parcel Boundary
 - County Boundary
 - Fire Perimeter as of 9/26/13





Vegetative Burn Severity - Rim Fire

Reference for Private Non-industrial Landowners - Map Page 10

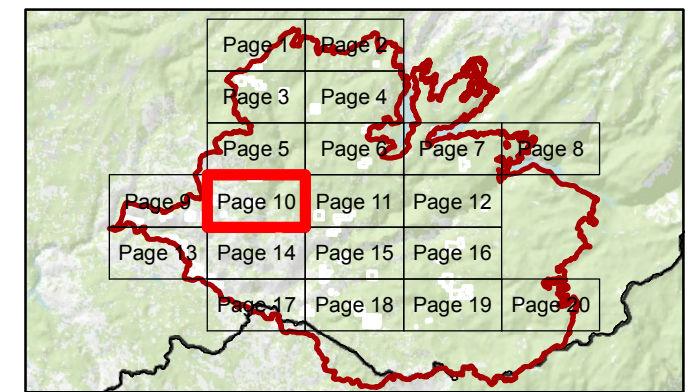


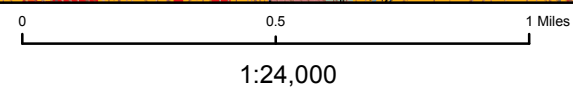
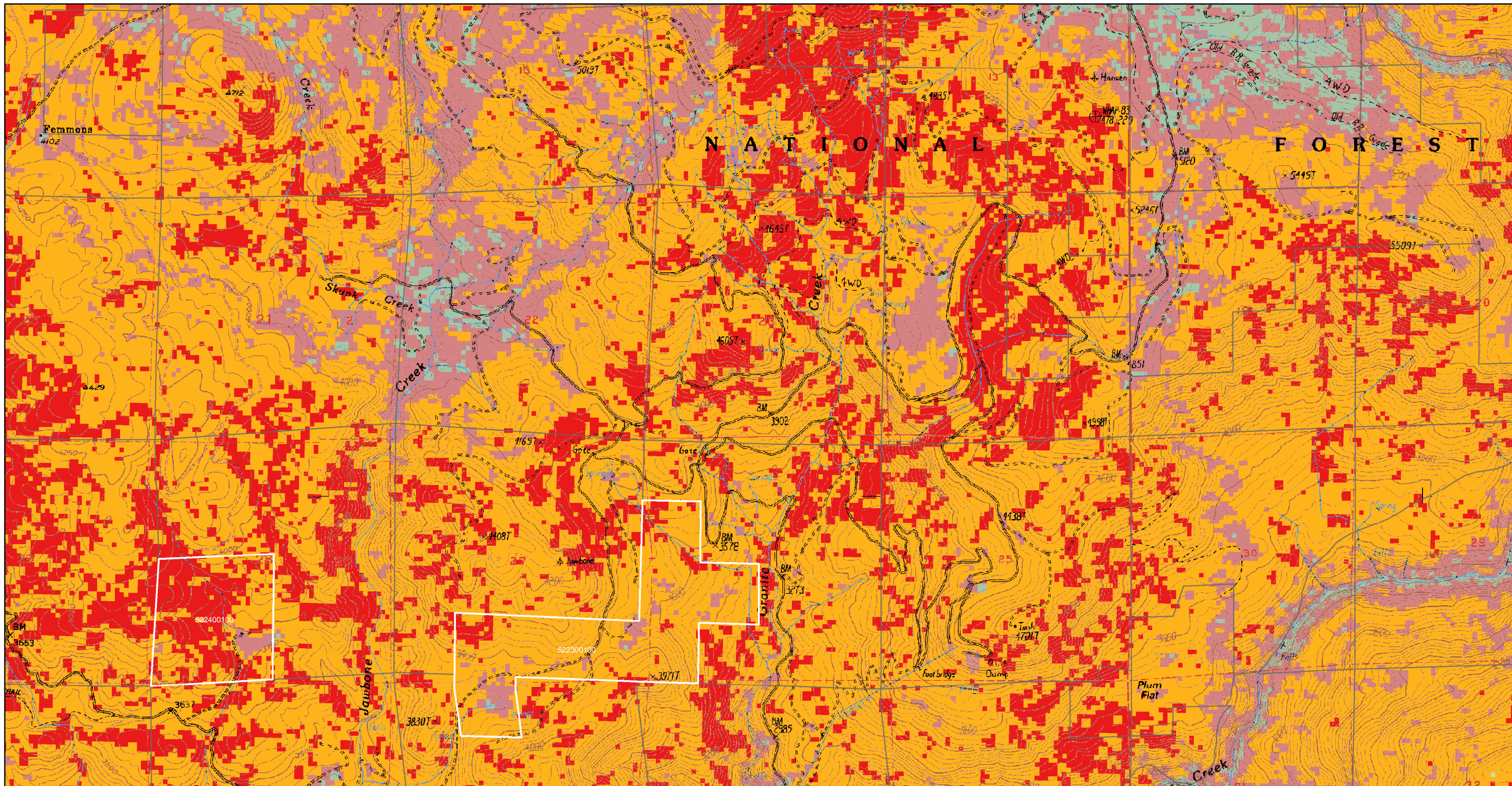
The Rapid Assessment of Vegetation Condition after Wildfire (RAVG) is generated by the USFS; the basal area loss summary is produced by a change detection process using two Landsat Thematic Mapper (TM) images captured before and after a wildfire.

RAVG is considered an initial assessment, which describes initial vegetation mortality (typically 30 days post-fire containment), but does not capture delayed vegetation mortality.

- Vegetative Burn Severity**
- 0 - 25% Basal Area Loss
 - 25 - <50% Basal Area Loss
 - 50 - <75% Basal Area Loss
 - 75 - 100% Basal Area Loss

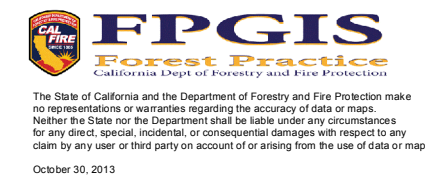
- Non Industrial Private Landowner
- Parcel Boundary
- County Boundary
- Fire Perimeter as of 9/26/13





Vegetative Burn Severity - Rim Fire

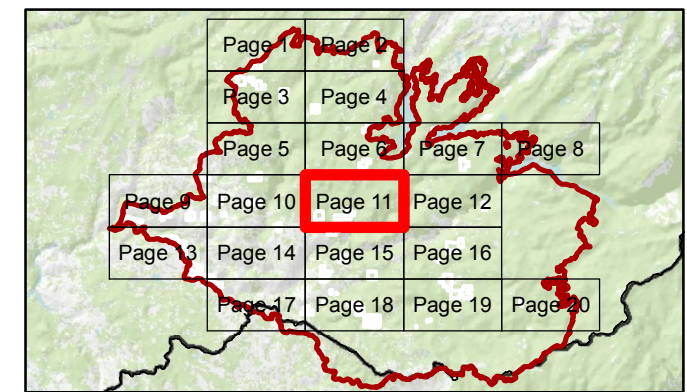
Reference for Private Non-industrial Landowners - Map Page 11

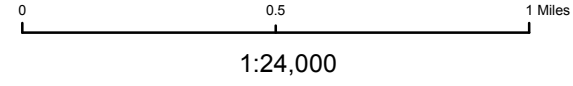
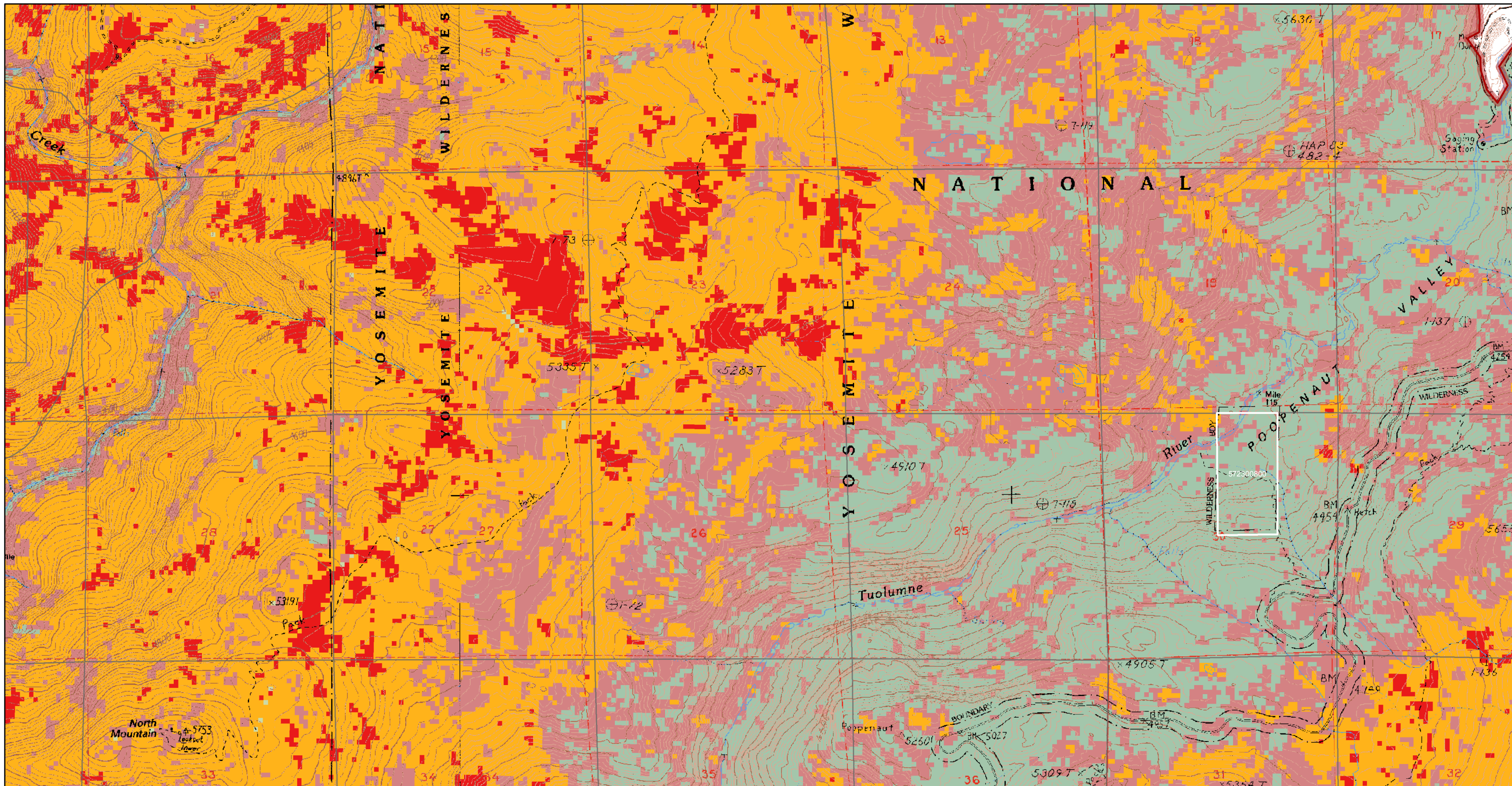


The Rapid Assessment of Vegetation Condition after Wildfire (RAVG) is generated by the USFS; the basal area loss summary is produced by a change detection process using two Landsat Thematic Mapper (TM) images captured before and after a wildfire.

RAVG is considered an initial assessment, which describes initial vegetation mortality (typically 30 days post-fire containment), but does not capture delayed vegetation mortality.

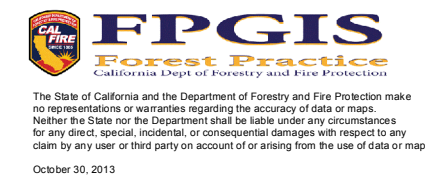
- Vegetative Burn Severity**
- 0 - 25% Basal Area Loss
 - 25 - <50% Basal Area Loss
 - 50 - <75% Basal Area Loss
 - 75 - 100% Basal Area Loss
- Non Industrial Private Landowner
 - Parcel Boundary
 - County Boundary
 - Fire Perimeter as of 9/26/13





Vegetative Burn Severity - Rim Fire

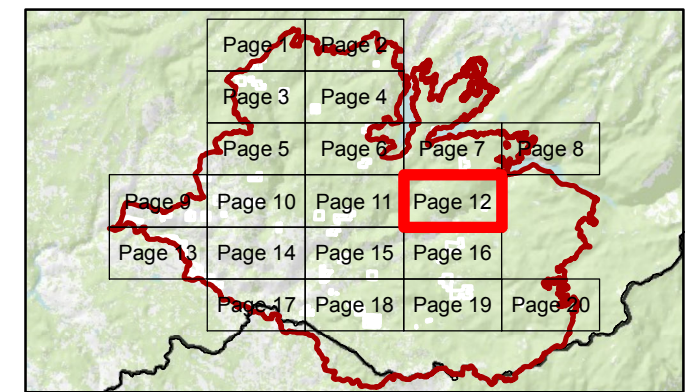
Reference for Private Non-industrial Landowners - Map Page 12

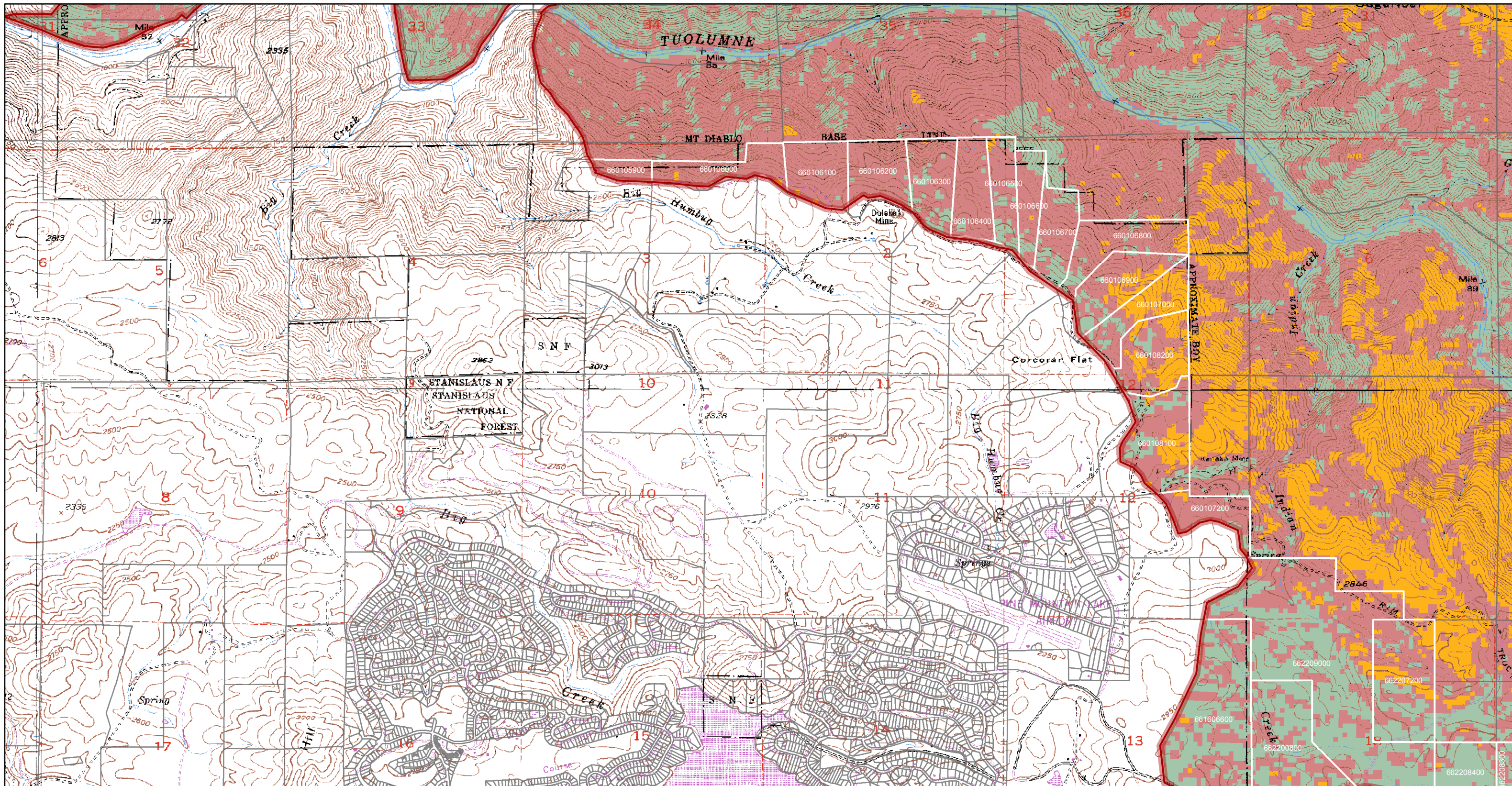


The Rapid Assessment of Vegetation Condition after Wildfire (RAVG) is generated by the USFS; the basal area loss summary is produced by a change detection process using two Landsat Thematic Mapper (TM) images captured before and after a wildfire.

RAVG is considered an initial assessment, which describes initial vegetation mortality (typically 30 days post-fire containment), but does not capture delayed vegetation mortality.

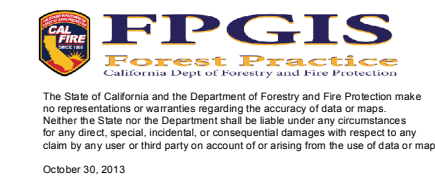
- Vegetative Burn Severity**
- 0 - 25% Basal Area Loss
 - 25 - <50% Basal Area Loss
 - 50 - <75% Basal Area Loss
 - 75 - 100% Basal Area Loss
- Non Industrial Private Landowner
 - Parcel Boundary
 - County Boundary
 - Fire Perimeter as of 9/26/13





Vegetative Burn Severity - Rim Fire

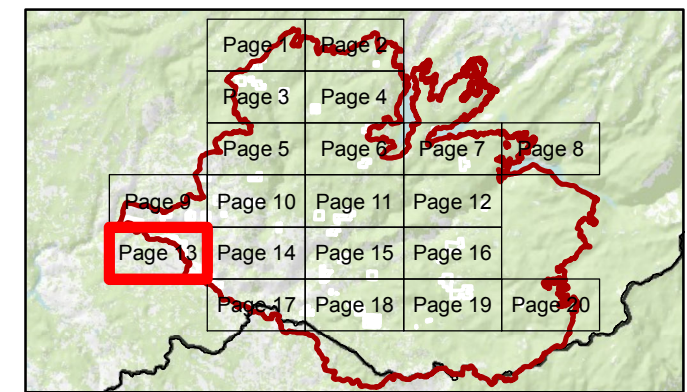
Reference for Private Non-industrial Landowners - Map Page 13

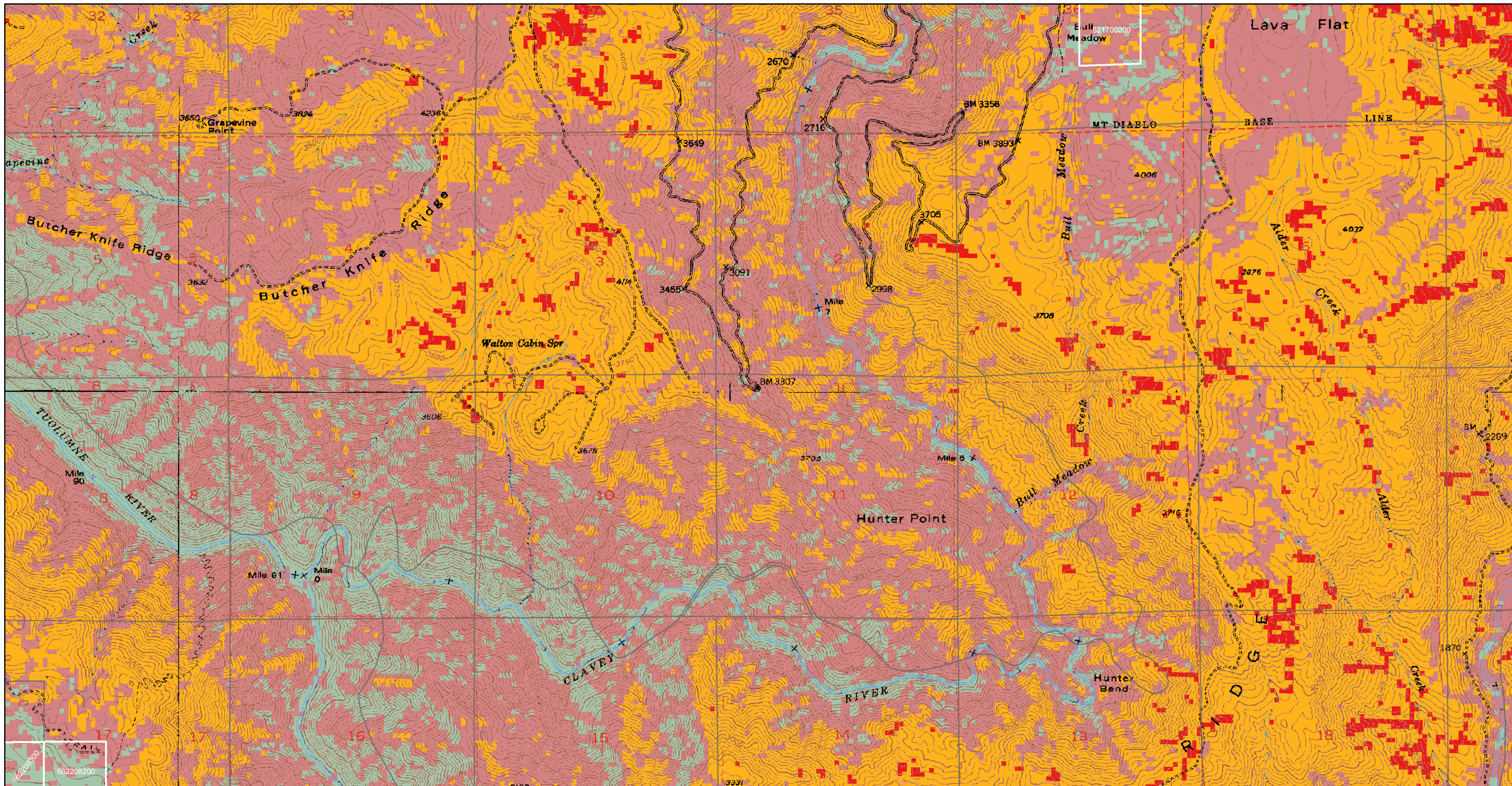


The Rapid Assessment of Vegetation Condition after Wildfire (RAVG) is generated by the USFS; the basal area loss summary is produced by a change detection process using two Landsat Thematic Mapper (TM) images captured before and after a wildfire.

RAVG is considered an initial assessment, which describes initial vegetation mortality (typically 30 days post-fire containment), but does not capture delayed vegetation mortality.

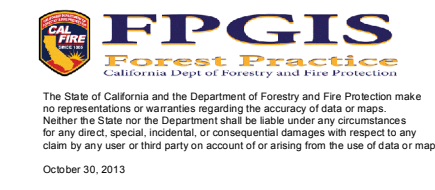
- Vegetative Burn Severity**
- 0 - 25% Basal Area Loss
 - 25 - <50% Basal Area Loss
 - 50 - <75% Basal Area Loss
 - 75 - 100% Basal Area Loss
- Map Symbols**
- Non Industrial Private Landowner
 - Parcel Boundary
 - County Boundary
 - Fire Perimeter as of 9/26/13





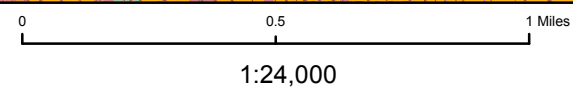
Vegetative Burn Severity - Rim Fire

Reference for Private Non-industrial Landowners - Map Page 14



The Rapid Assessment of Vegetation Condition after Wildfire (RAVG) is generated by theUSFS; the basal area loss summary is produced by a change detection process using two Landsat Thematic Mapper (TM) images captured before and after a wildfire.

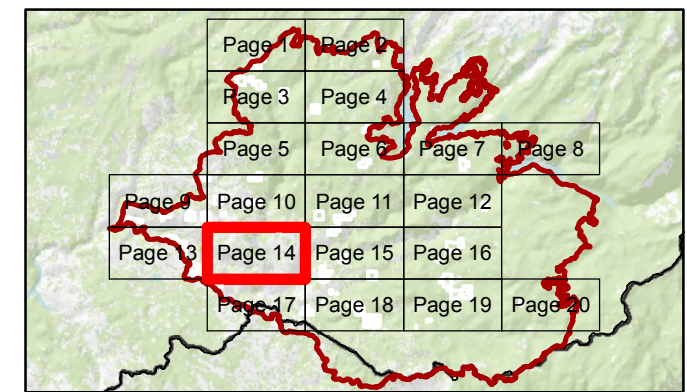
RAVG is considered an initial assessment, which describes initial vegetation mortality (typically 30 days post-fire containment), but does not capture delayed vegetation mortality.

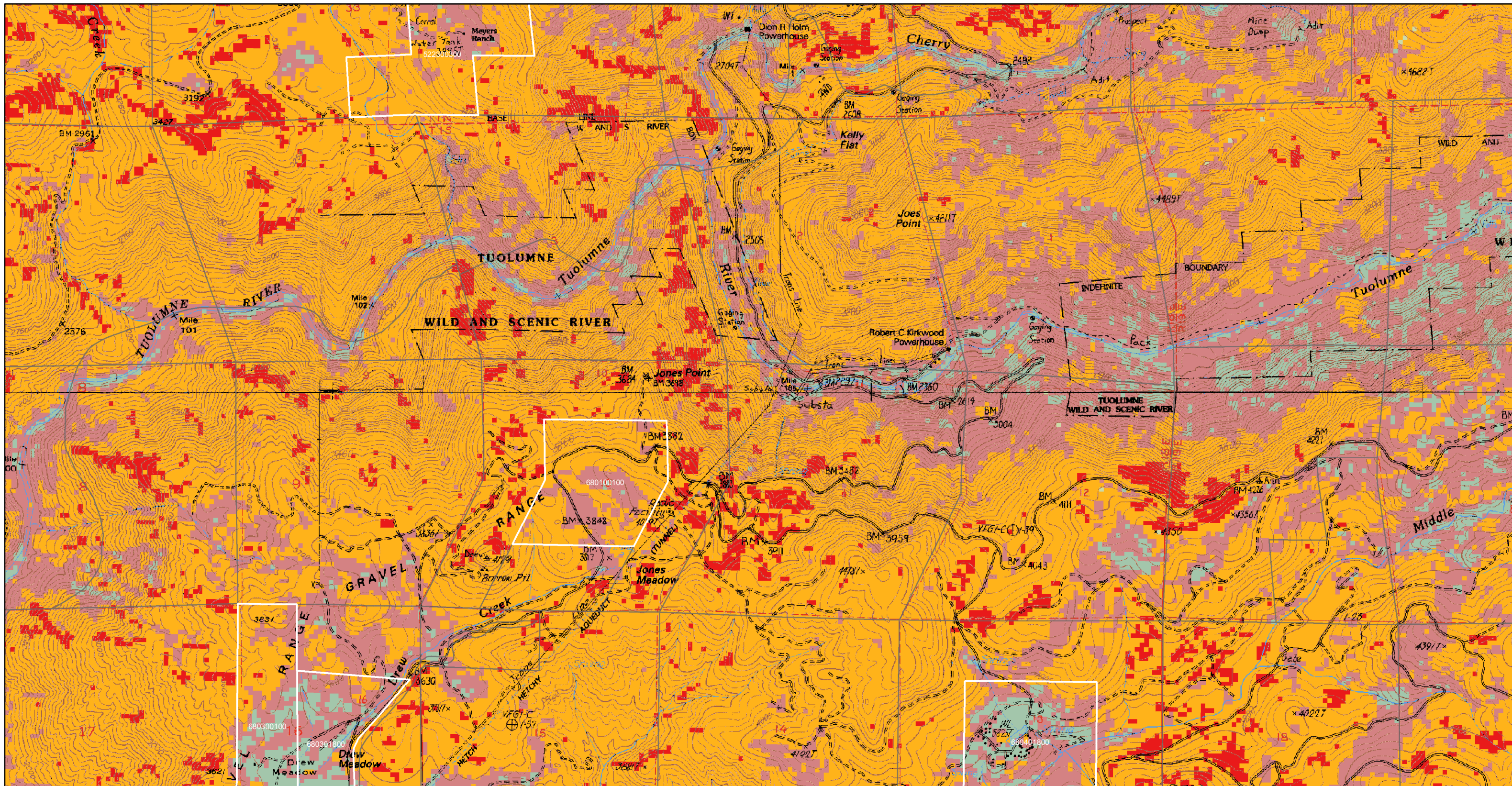


Vegetative Burn Severity

- 0 - 25% Basa Area Loss
- 25 - <50% Basa Area Loss
- 50 - <75% Basa Area Loss
- 75 - 100% Basa Area Loss

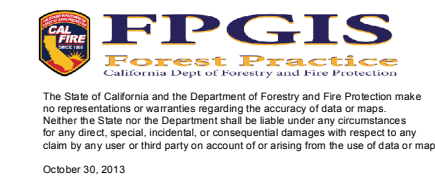
- Non Industrial Private Landowner
- Parcel Boundary
- County Boundary
- Fire Perimeter as of 9/26/13





Vegetative Burn Severity - Rim Fire

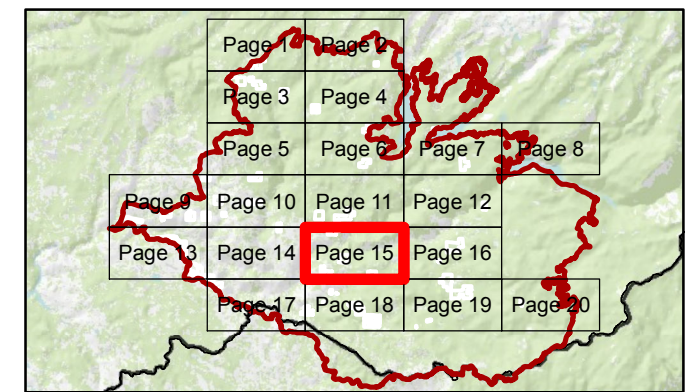
Reference for Private Non-industrial Landowners - Map Page 15

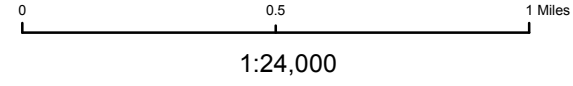
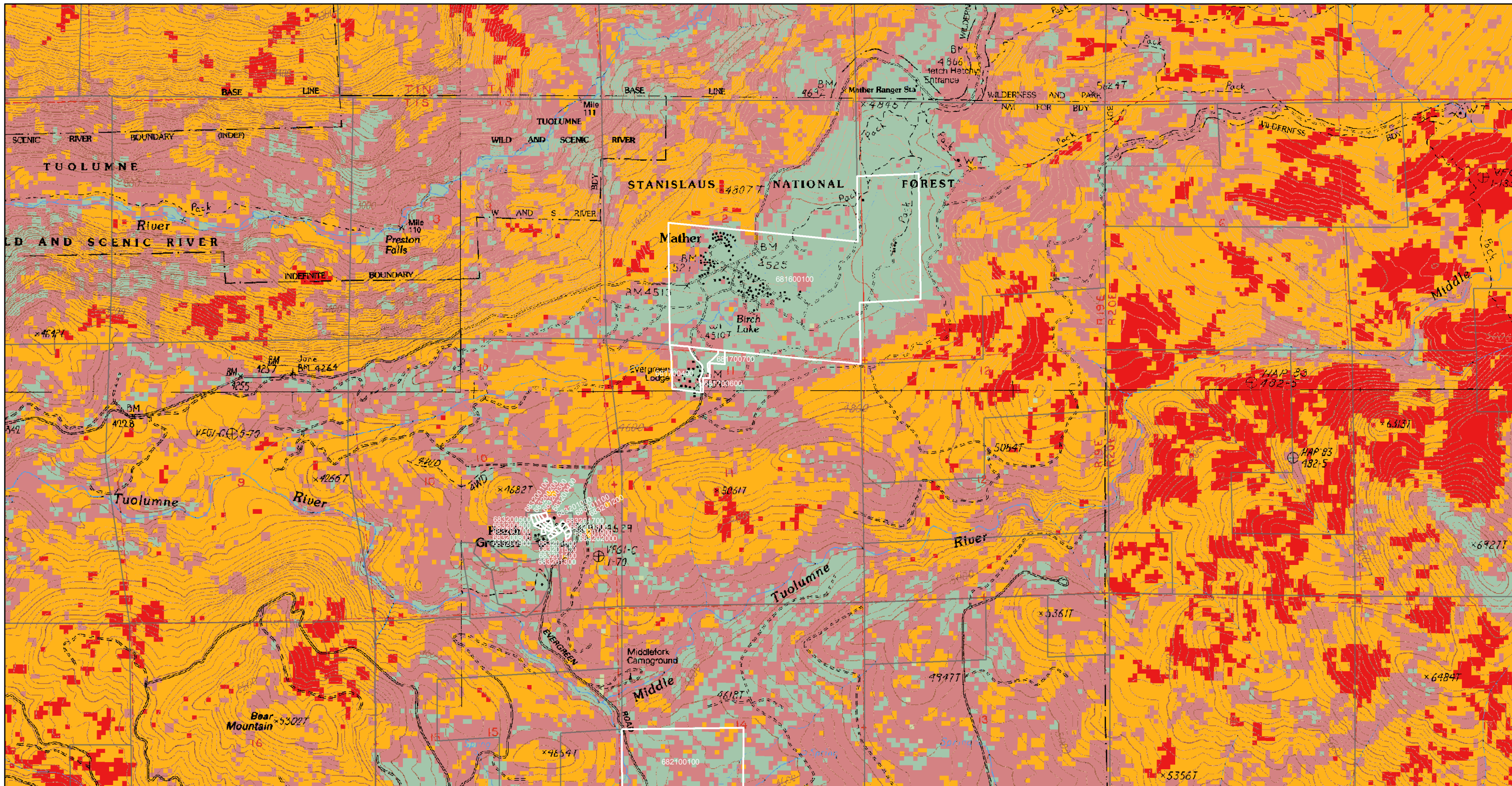


The Rapid Assessment of Vegetation Condition after Wildfire (RAVG) is generated by the USFS; the basal area loss summary is produced by a change detection process using two Landsat Thematic Mapper (TM) images captured before and after a wildfire.

RAVG is considered an initial assessment, which describes initial vegetation mortality (typically 30 days post-fire containment), but does not capture delayed vegetation mortality.

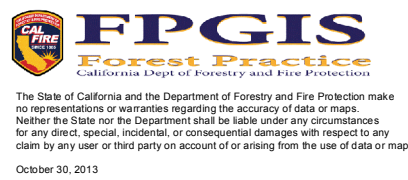
- Vegetative Burn Severity**
- 0 - 25% Basal Area Loss
 - 25 - <50% Basal Area Loss
 - 50 - <75% Basal Area Loss
 - 75 - 100% Basal Area Loss
- Non Industrial Private Landowner
 - Parcel Boundary
 - County Boundary
 - Fire Perimeter as of 9/26/13





Vegetative Burn Severity - Rim Fire

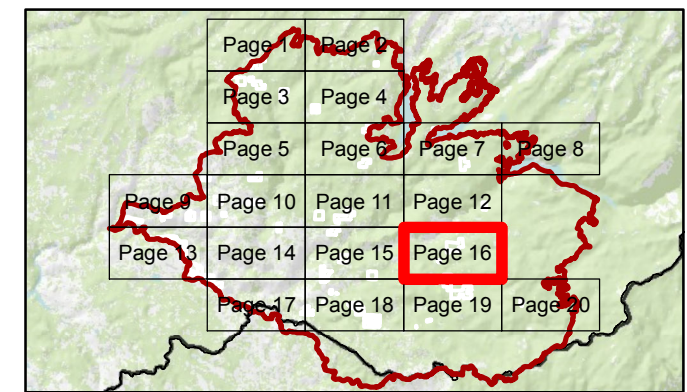
Reference for Private Non-industrial Landowners - Map Page 16

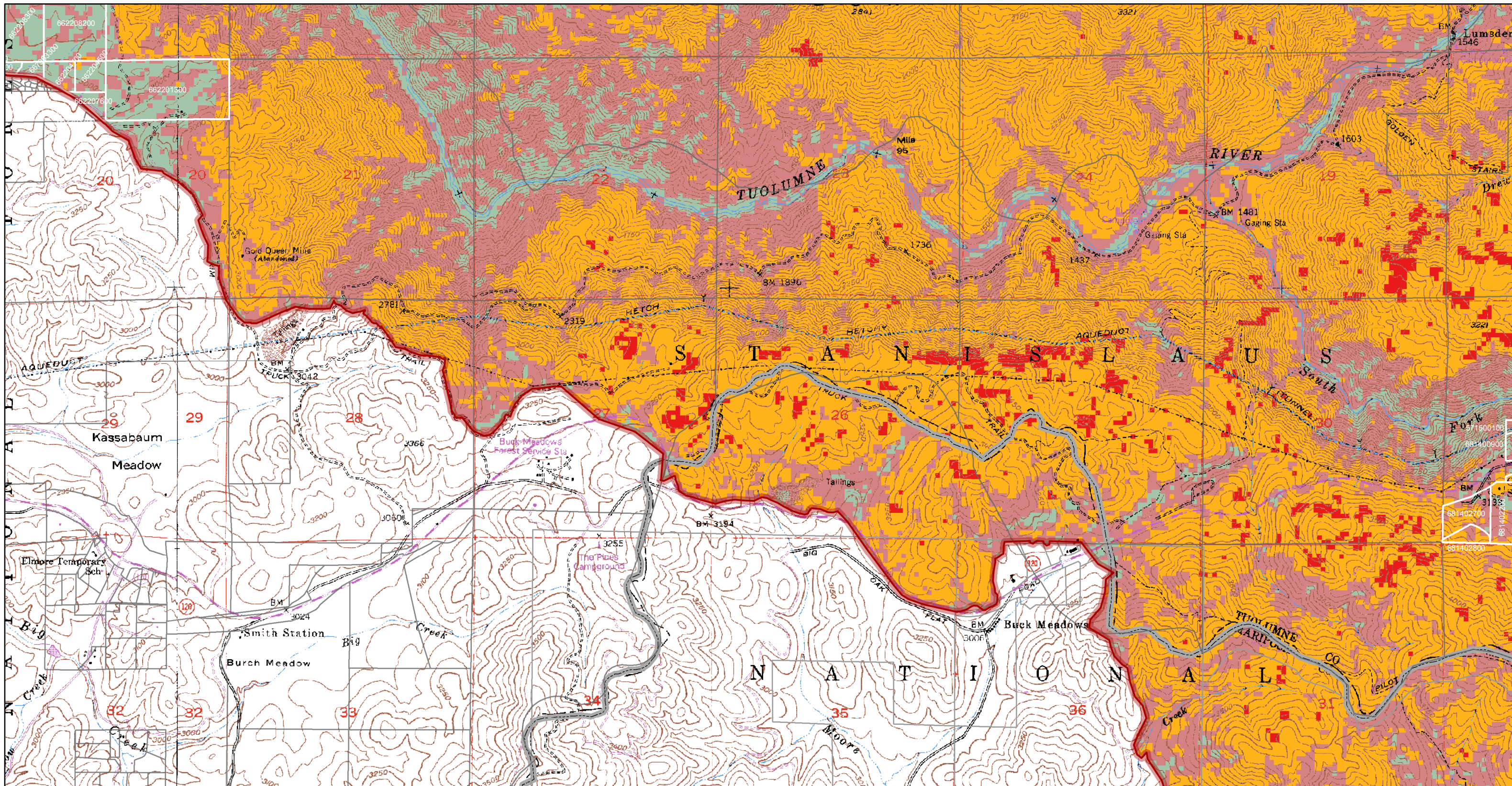


The Rapid Assessment of Vegetation Condition after Wildfire (RAVG) is generated by the USFS; the basal area loss summary is produced by a change detection process using two Landsat Thematic Mapper (TM) images captured before and after a wildfire.

RAVG is considered an initial assessment, which describes initial vegetation mortality (typically 30 days post-fire containment), but does not capture delayed vegetation mortality.

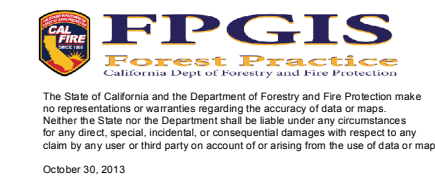
- Vegetative Burn Severity**
- 0 - 25% Basal Area Loss
 - 25 - <50% Basal Area Loss
 - 50 - <75% Basal Area Loss
 - 75 - 100% Basal Area Loss
- Non Industrial Private Landowner
 - Parcel Boundary
 - County Boundary
 - Fire Perimeter as of 9/26/13





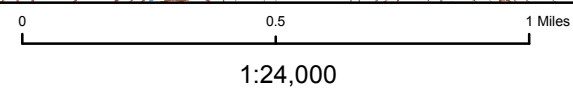
Vegetative Burn Severity - Rim Fire

Reference for Private Non-industrial Landowners - Map Page 17

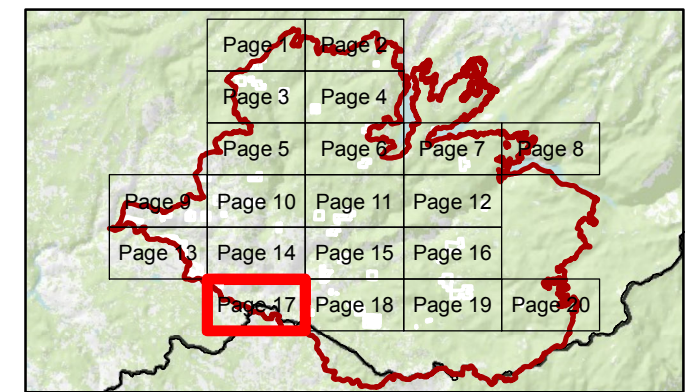


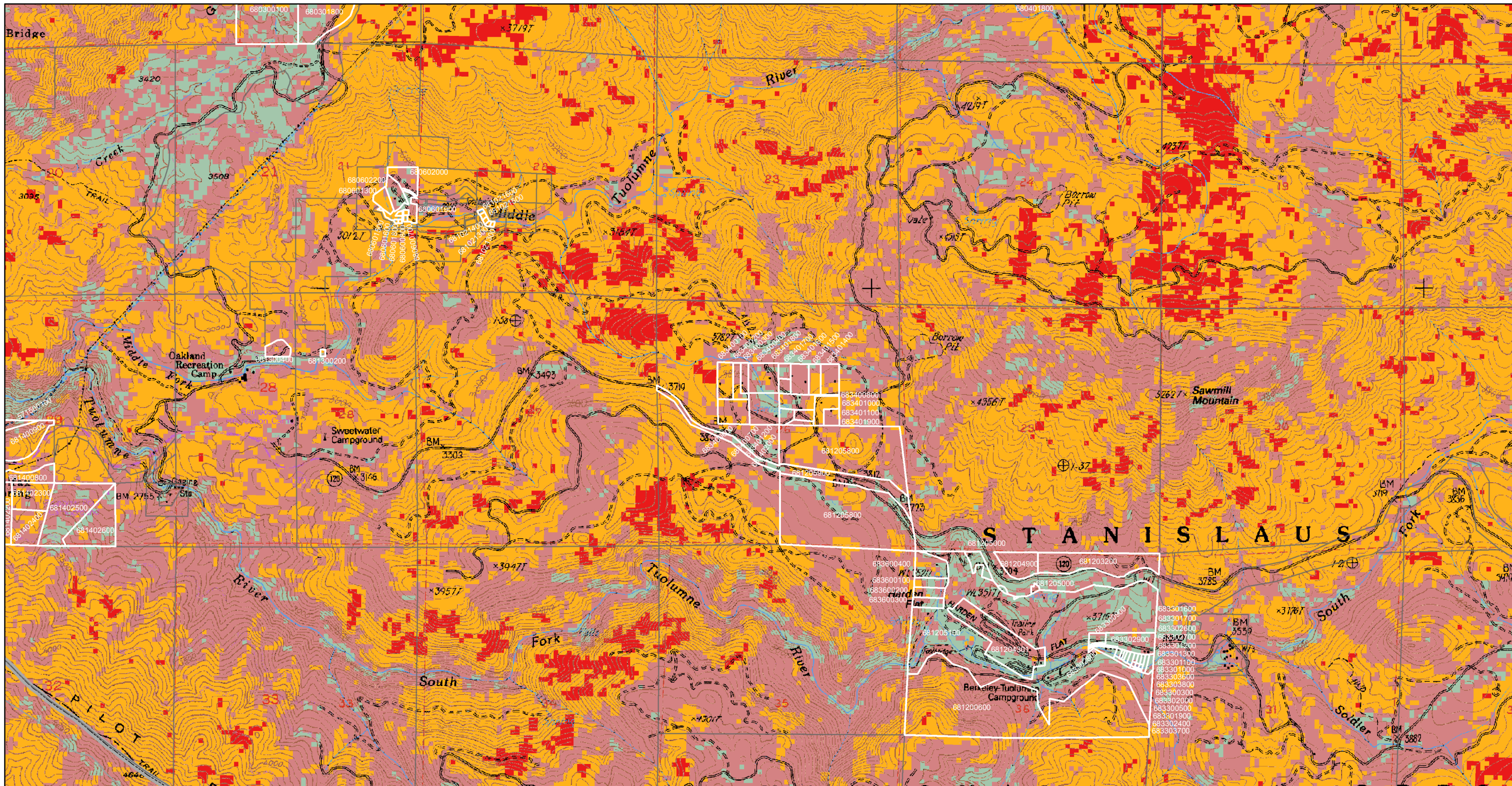
The Rapid Assessment of Vegetation Condition after Wildfire (RAVG) is generated by the USFS; the basal area loss summary is produced by a change detection process using two Landsat Thematic Mapper (TM) images captured before and after a wildfire.

RAVG is considered an initial assessment, which describes initial vegetation mortality (typically 30 days post-fire containment), but does not capture delayed vegetation mortality.



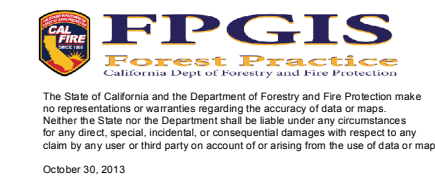
- Vegetative Burn Severity**
- 0 - 25% Basal Area Loss
 - 25 - <50% Basal Area Loss
 - 50 - <75% Basal Area Loss
 - 75 - 100% Basal Area Loss
- Non Industrial Private Landowner
 - Parcel Boundary
 - County Boundary
 - Fire Perimeter as of 9/26/13





Vegetative Burn Severity - Rim Fire

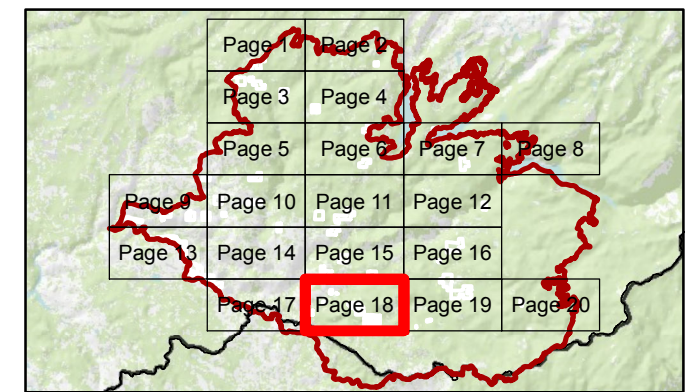
Reference for Private Non-industrial Landowners - Map Page 18

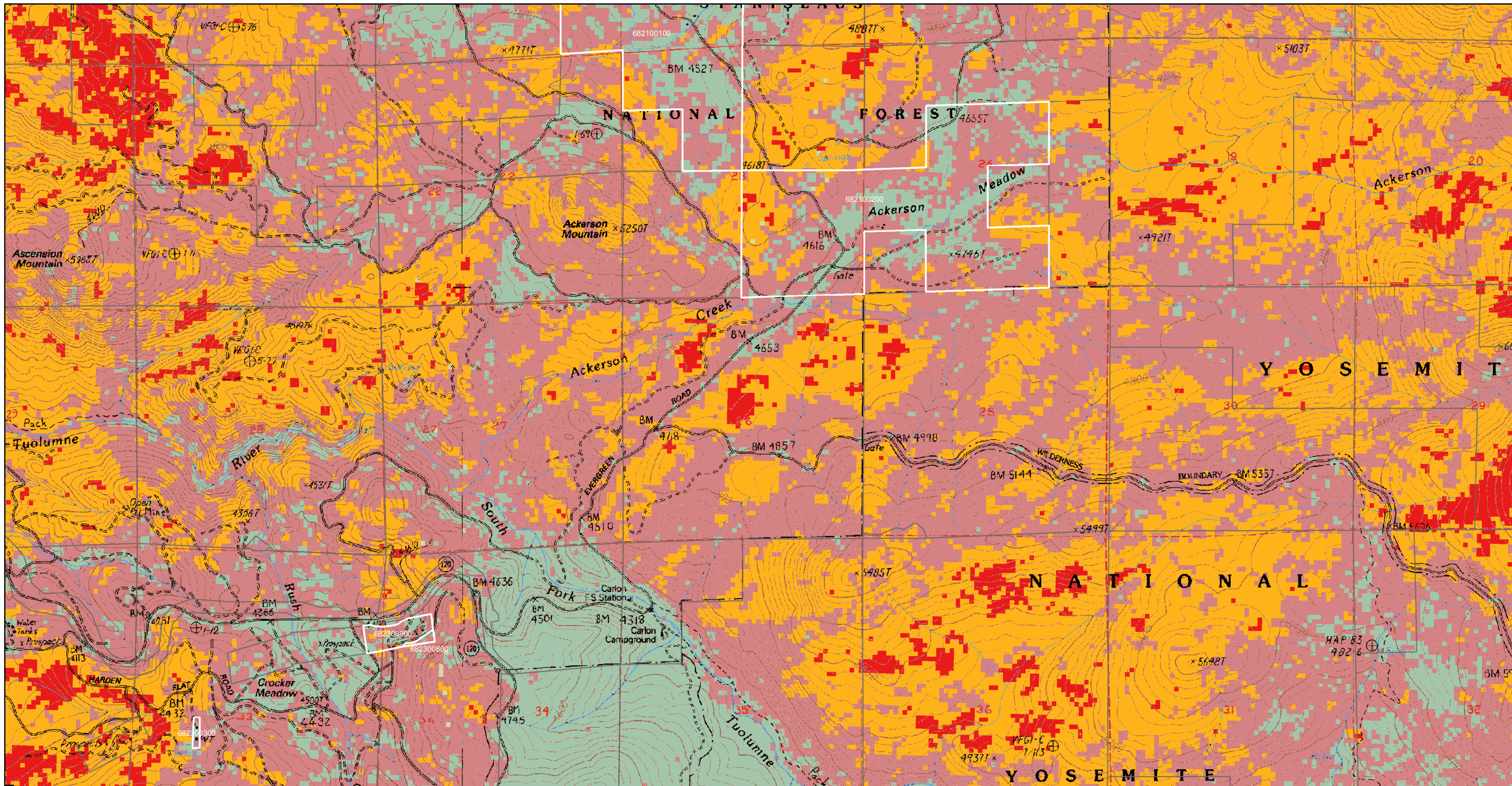


The Rapid Assessment of Vegetation Condition after Wildfire (RAVG) is generated by the USFS; the basal area loss summary is produced by a change detection process using two Landsat Thematic Mapper (TM) images captured before and after a wildfire.

RAVG is considered an initial assessment, which describes initial vegetation mortality (typically 30 days post-fire containment), but does not capture delayed vegetation mortality.

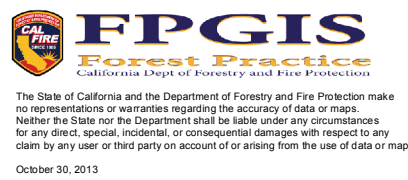
- Vegetative Burn Severity**
- 0 - 25% Basal Area Loss
 - 25 - <50% Basal Area Loss
 - 50 - <75% Basal Area Loss
 - 75 - 100% Basal Area Loss
- Map Symbols**
- Non Industrial Private Landowner
 - Parcel Boundary
 - County Boundary
 - Fire Perimeter as of 9/26/13





Vegetative Burn Severity - Rim Fire

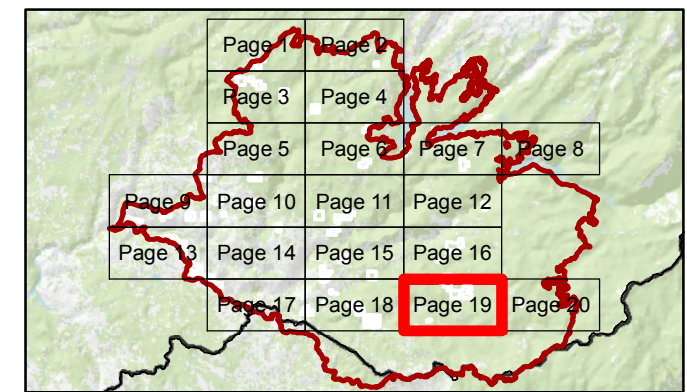
Reference for Private Non-industrial Landowners - Map Page 19

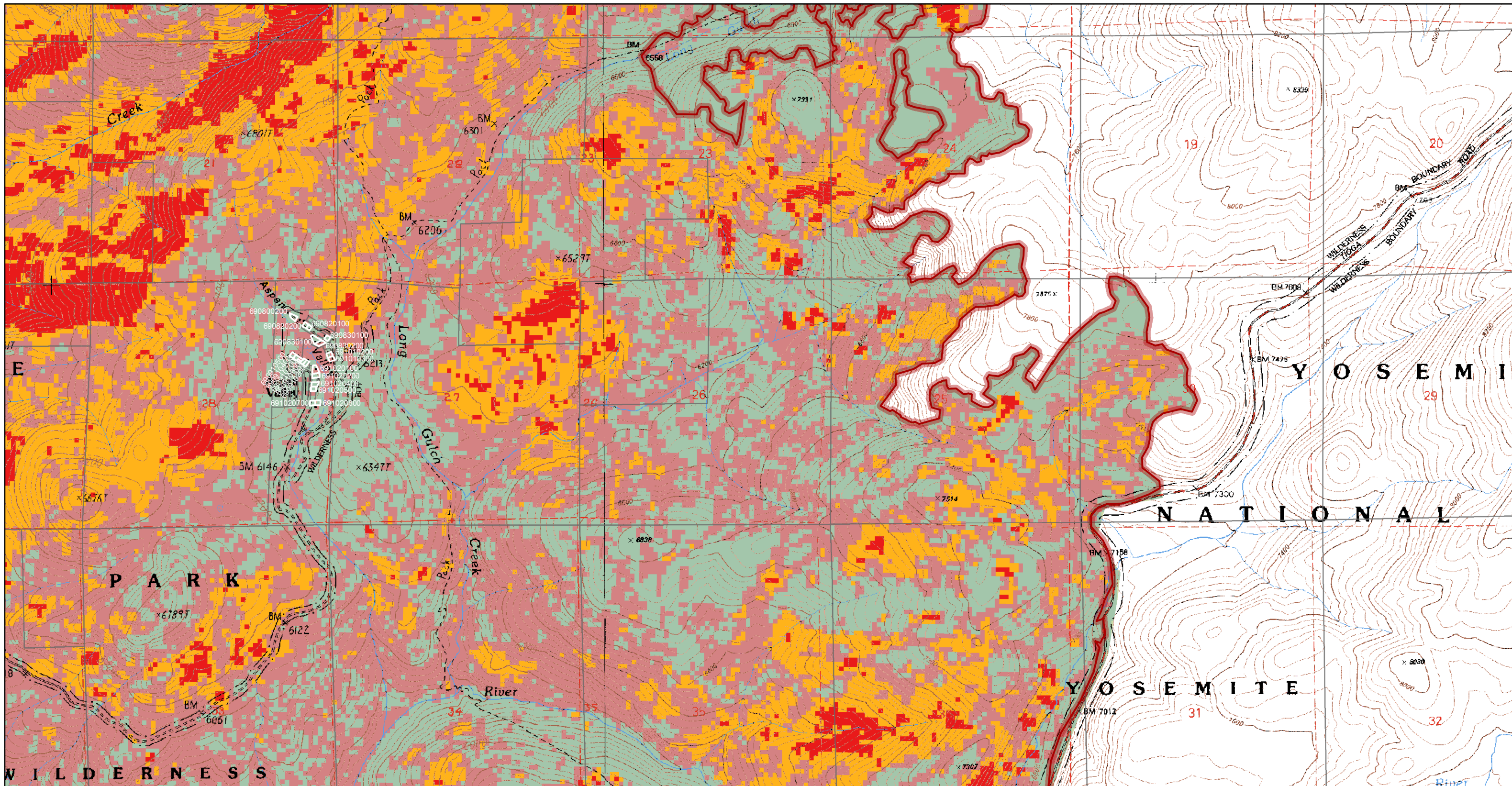


The Rapid Assessment of Vegetation Condition after Wildfire (RAVG) is generated by the USFS; the basal area loss summary is produced by a change detection process using two Landsat Thematic Mapper (TM) images captured before and after a wildfire.

RAVG is considered an initial assessment, which describes initial vegetation mortality (typically 30 days post-fire containment), but does not capture delayed vegetation mortality.

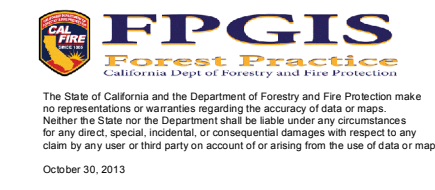
- Vegetative Burn Severity**
- 0 - 25% Basal Area Loss
 - 25 - <50% Basal Area Loss
 - 50 - <75% Basal Area Loss
 - 75 - 100% Basal Area Loss
- Non Industrial Private Landowner
 - Parcel Boundary
 - County Boundary
 - Fire Perimeter as of 9/26/13





Vegetative Burn Severity - Rim Fire

Reference for Private Non-industrial Landowners - Map Page 20



The Rapid Assessment of Vegetation Condition after Wildfire (RAVG) is generated by the USFS; the basal area loss summary is produced by a change detection process using two Landsat Thematic Mapper (TM) images captured before and after a wildfire.

RAVG is considered an initial assessment, which describes initial vegetation mortality (typically 30 days post-fire containment), but does not capture delayed vegetation mortality.

- Vegetative Burn Severity**
- 0 - 25% Basal Area Loss
 - 25 - <50% Basal Area Loss
 - 50 - <75% Basal Area Loss
 - 75 - 100% Basal Area Loss
- Non Industrial Private Landowner
 - Parcel Boundary
 - County Boundary
 - Fire Perimeter as of 9/26/13

