

Success in forest improvement projects

Fred Euphrat RPF
17 June 2020

Brown Bag Special
Forest Working Group

What are your goals?

- Safe area
- Fire control: fuelbreak
- Fire control: vegetation management
- Stand growth
- Species selection
- Site management – Sunlight, Shade, View, Shelterbelts
- Site management – Slash control, burn prep, burn

- Aesthetics, Watershed Management, Working in context

Every Goal has its own metric of success

- Separation of canopy
- Trees per acre
- Resprouts per cut stem
- Canopy cover
- BTU's per square meter
- Tree growth
- Species suppression
- Fuel ladder
- Forest stocking
- Hardwood competition
- humidity, shade, soil protection
- Fire hazard
- Forest production
- Invasive removal

Commercial forestry can separate the canopy & create breaks in the horizontal structure



Thinning for
fuelbreaks means less
in the air, less on the
ground





The trees are spaced to maximize sun, water and nutrients for best growth and resilience.

The ground in the fuelbreak is clean.

Interlaced
canopies,
loss of vigor,
insect attack
makes
standing
fuel.





Restarting the stand is measured in acres of re-discovered 'crop trees', the reflection of the landowners' goal.









Slash is usually left to decompose, but better to be burned, chipped or in contact with the soil.

Less BTU's on the ground



Slash can
also be
mulched
into the
ground



Cut hardwood
trees tend to
sprout –

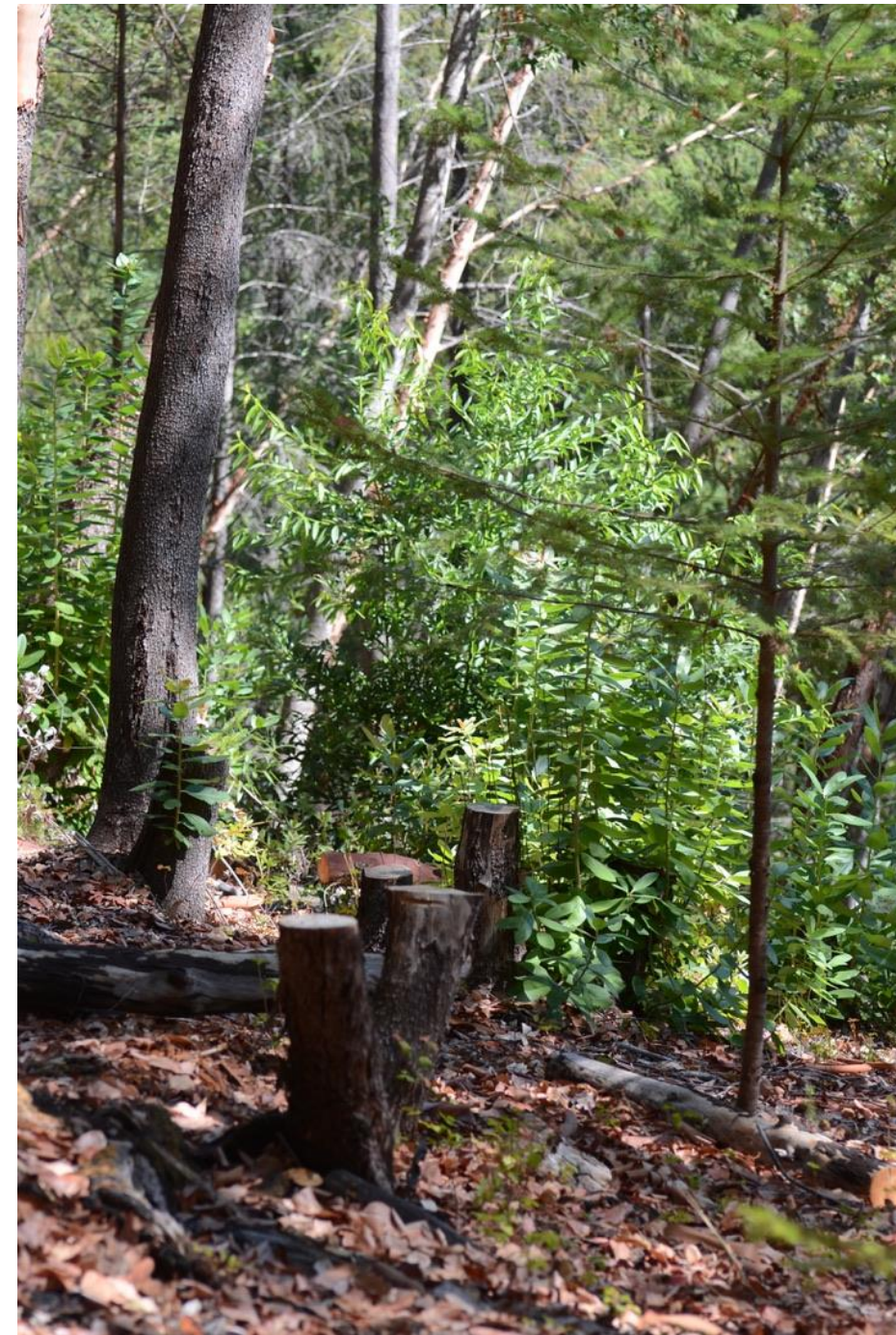
See if you can limit
with shade in the
fuel break

High stumps and
single stems to
minimize fuel
ladders



Resprouts from
a cut madrone
crown

High stumps
and single stems
tend to
minimize fuel
ladders

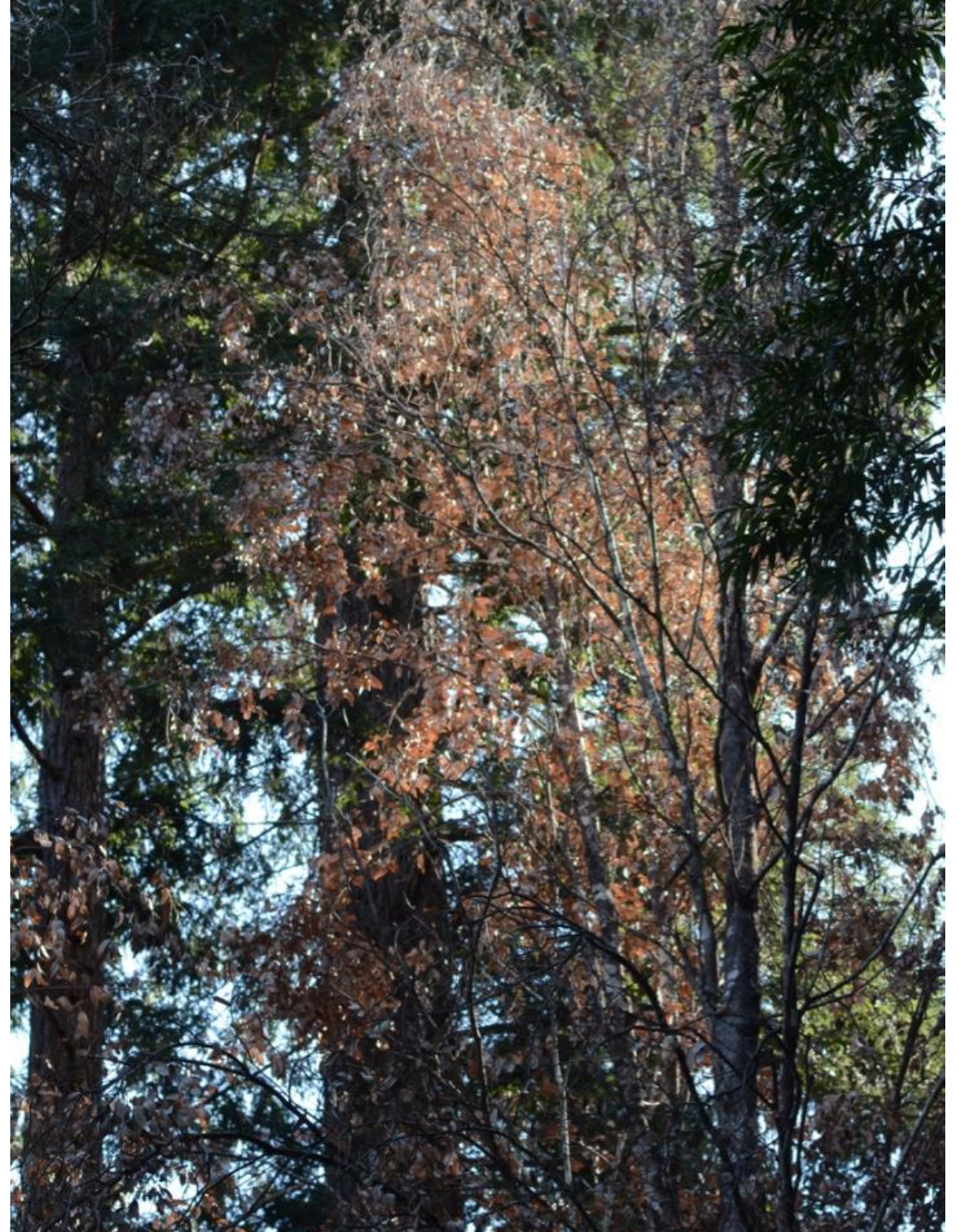


Resprouts can
have little vigor,
with shade or
pests (here, SOD)



SOD is also thinning the canopy, and your stands must be checked regularly,

The loss of the tanoak is thinning the redwoods, fir, oaks and madrones, creating volunteer fuelbreaks.



What are your goals?

- Safe area
- Fire control: fuelbreak
- Fire control: vegetation management
- Stand growth
- Species selection
- Site management – Sunlight, Shade, View, Shelterbelts
- Site management – Slash control, burn prep, burn
- Aesthetics, Watershed Management, Working in context

In many cases,
you will be
planting, growing
and protecting
trees



Getting some trees to work with the deer requires protection.

These trees are Douglas-fir, planted for watershed protection

Species desirability changes over time!

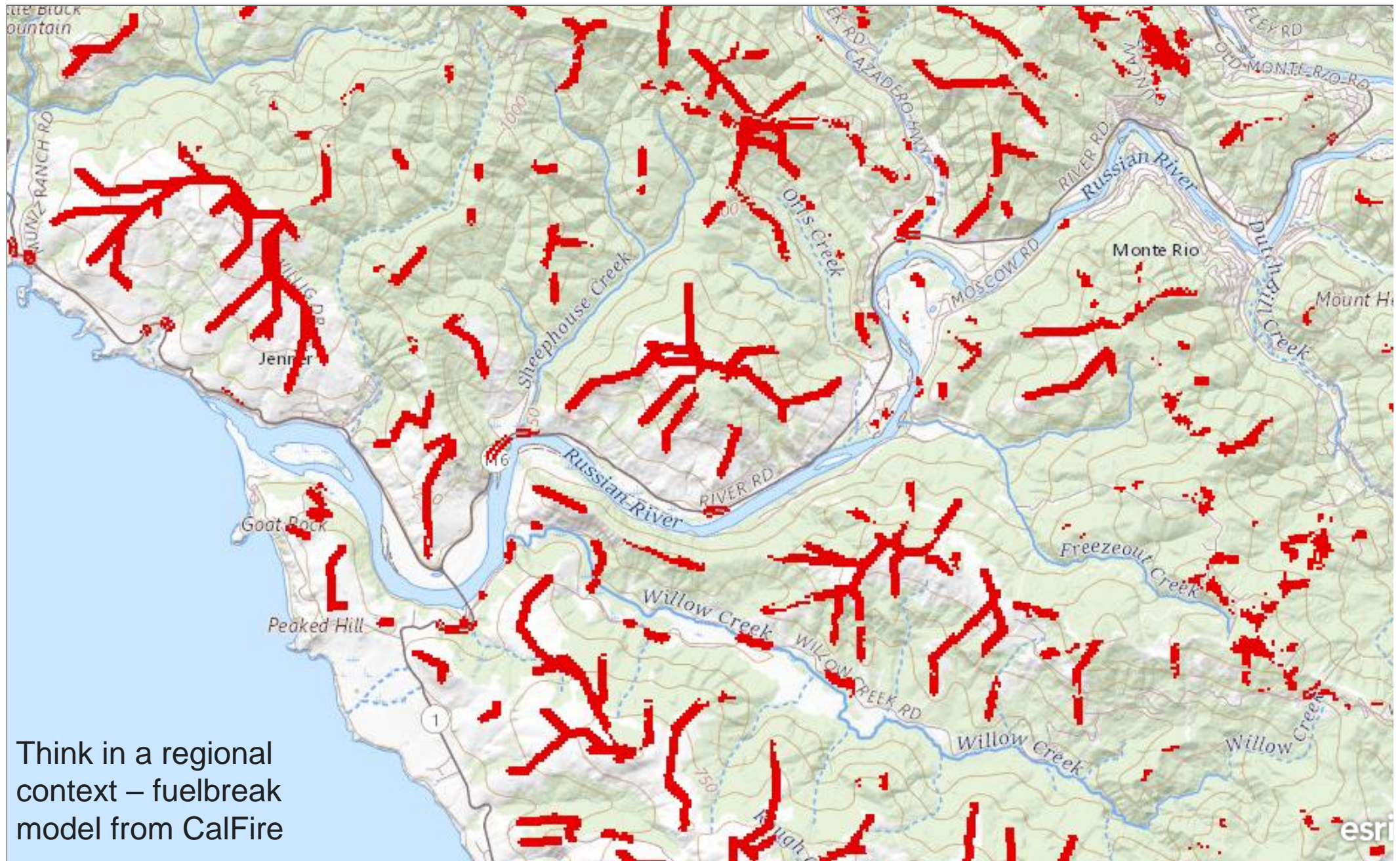


Aesthetics is often just opening up the 'crop' trees of size and interest.

(They don't even need to be alive.)



bear flat



Think in a regional context – fuelbreak model from CalFire



And at a landscape scale, aesthetics may be designed from or for a point of reference.