

# Case Study Issue Review

Ed Smith

*University of Nevada Cooperative Extension*

and

Susie Kocher

*University of California Cooperative Extension*

Case Study #1:  
**Incline Village  
Fuel Reduction Efforts**

Norb Szczurek  
*North Lake Tahoe Fire Protection District*

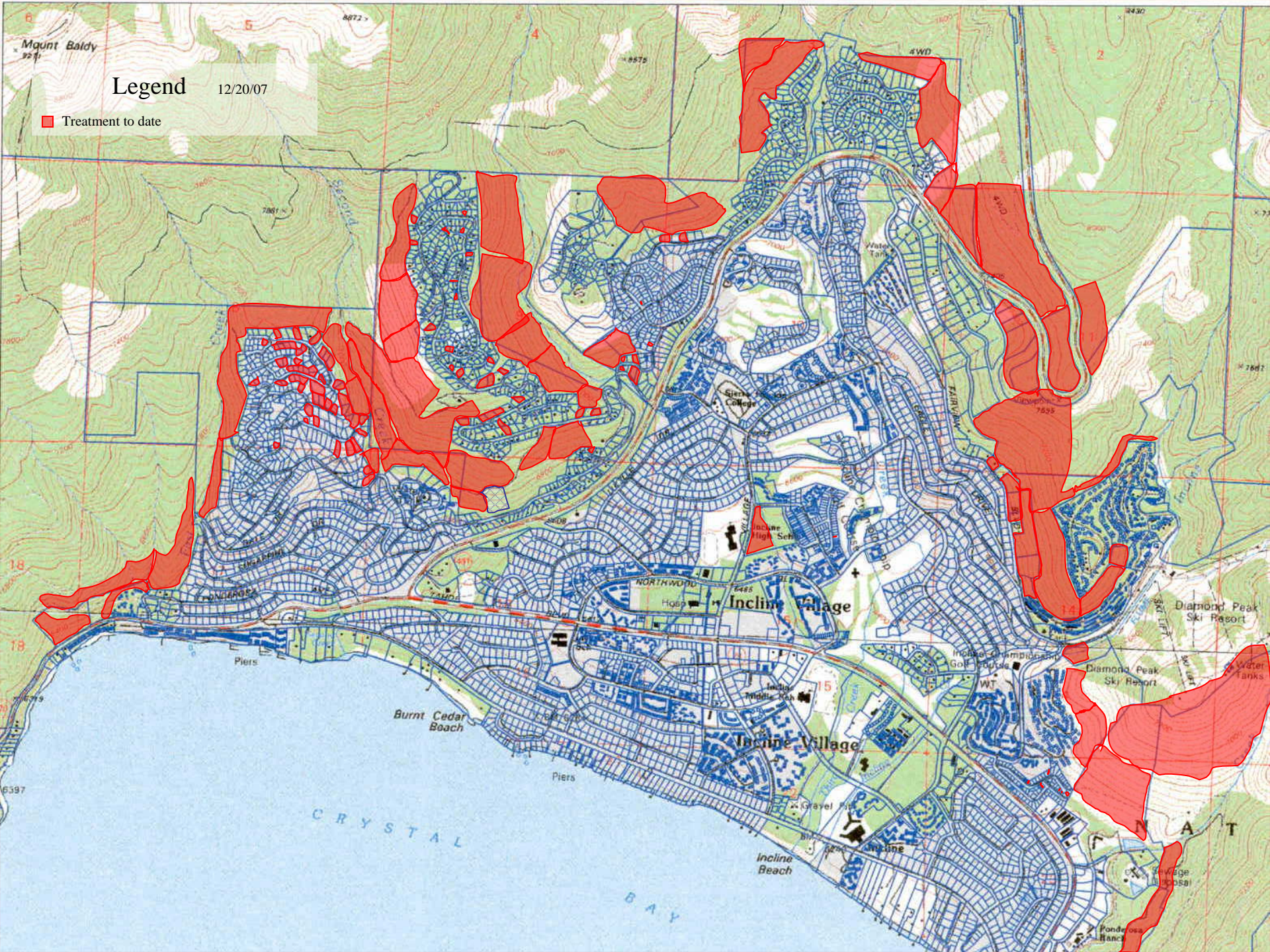


Mount Baldy  
9271'

# Legend

12/20/07

■ Treatment to date





# Case Study #1: Incline Village Fuel Reduction Efforts

## Issue 1-1

Air quality concerns limit burn days in California.

# Case Study #1: Incline Village Fuel Reduction Efforts

## Issue 1-2

Limited number of days (14 day/year) in which burn plots are in prescription and resources available (So Cal fires).

# Case Study #1: Incline Village Fuel Reduction Efforts

Issue 1-3

Need for an effective monitoring program.

# Case Study #1: Incline Village Fuel Reduction Efforts

## Issue 1-4

Up front investment to prep to reduce fuels (helicopter logging) for prescribed burn program.

# Case Study #1: Incline Village Fuel Reduction Efforts

Issue 1-5

Public outreach essential to long term success.



Case Study #2:  
**Homewood Ski Area**  
**Steep Slope Tree Thinning**

Andrea Stanley  
*Lahontan Regional*  
*Water Quality Control Board*

and

Michael Hogan  
*Integrated Environmental*



# Case Study #2: Homewood Ski Area Steep Slope Tree Thinning

Issue 2-1: Change in ownership, technical staff, and management philosophy.

**Case Study #2:  
Homewood Ski Area  
Steep Slope Tree Thinning**

**Issue 2-2: Limited tools for 30% slope.**

# Case Study #2: Homewood Ski Area Steep Slope Tree Thinning

Issue 2-3: Process for approving innovative technology worked. Tong Tossing limited application.



# Case Study #2: Homewood Ski Area Steep Slope Tree Thinning

Issue 2-4: Inadequate monitoring  
(timing, purposeful, equipment,  
long term).

# Case Study #2: Homewood Ski Area Steep Slope Tree Thinning

Issue 2-5: Why 30%? Need to identify acceptable risk.

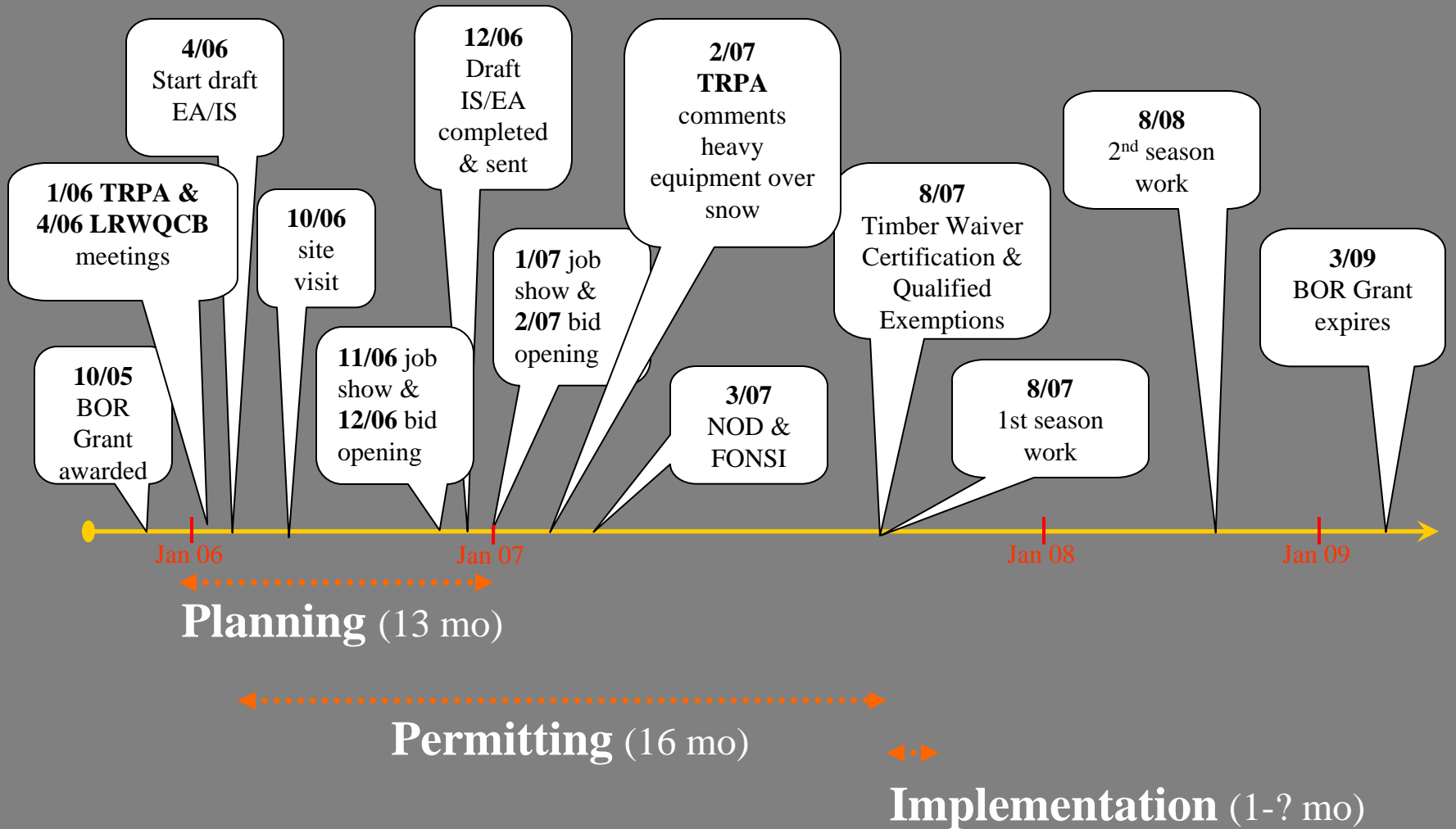
Case Study #3:  
**California Parks  
Riparian Hardwoods Project**

Tamara Sasaki  
*California State Parks*

and

Rich Adams  
*California State Parks*

# Project Chronology



**Case Study #3:  
California Parks  
Riparian Hardwoods Project**

**Issue 3-1: Contracting issues.**



**Case Study #3:  
California Parks  
Riparian Hardwoods Project**

**Issue 3-2: Layers of permitting and permit process is complicated. Steep learning curve.**

**Case Study #3:  
California Parks  
Riparian Hardwoods Project**

**Issue 3-3: Staff turnover at regulatory agencies and inconsistent messages.**

**Case Study #3:  
California Parks  
Riparian Hardwoods Project**

**Issue 3-4: Demonstration process can be daunting for smaller organizations.**

**Case Study #3:  
California Parks  
Riparian Hardwoods Project**

**Issue 3-5: Lack of available tools for  
work in SEZs.**

# Case Study #3: California Parks Riparian Hardwoods Project

Issue 3-6: Lack of reliable workforce  
(agency crews get diverted and  
contractors scared-off by uncertainty).



**Case Study #3:  
California Parks  
Riparian Hardwoods Project**

**Issue 3-7: Consistency between  
regulatory agencies.**

**Case Study #3:  
California Parks  
Riparian Hardwoods Project**

**Issue 3-8: Short field season and  
competition for contractors.**

# Case Study #3: California Parks Riparian Hardwoods Project

Issue 3-9: Current tools? Slash pile burning in SEZs (convenient, but rarely allowed, impacts?) and over-the-snow logging.

Case Study #4:  
**Heavenly Valley SEZ  
Demonstration Project &  
SEZ Sensitivity Analysis**

Sue Norman  
*Lake Tahoe Basin Management Unit  
USDA Forest Service*







# Case Study #4: Heavenly Valley SEZ Demonstration Project & SEZ Sensitivity Analysis

Issue 4-1: SEZ treatment needs to be mechanized, but acceptable tools are limited.

**Case Study #4:  
Heavenly Valley SEZ Demonstration  
Project & SEZ Sensitivity Analysis**

**Issue 4-2: Demonstration process worked, but treatment costs are high.**

# Case Study #4: Heavenly Valley SEZ Demonstration Project & SEZ Sensitivity Analysis

Issue 4-3: Some mitigation measures are expensive, may not buy you much (slash mats).



**Case Study #4:  
Heavenly Valley SEZ Demonstration  
Project & SEZ Sensitivity Analysis**

**Issue 4-4: Identifying sensitivity of  
SEZs to mechanical treatment.**

# Issue Summary

- Complex regulatory environment and high cost
- Lack of acceptable tools for sensitive areas
- Knowledge gaps (tools, impacts, standards)
- Workforce availability (uncertainty)