

Forest Stewardship Education Initiative

First Year Implementation report

California Forest Management Task Force Update – July 2020

This report is intended to update the Forest Management Task Force on implementation of the Forest Landowner Outreach and Education Working Group recommendation on forest stewardship education. The goal of the Forest Stewardship Education Initiative is to engage forest landowners to better understand and protect their forests by developing a forest management plan. Participants develop management objectives, learn basic concepts on forest and fire ecology; fuels reduction and forest resource marketing; and develop mapping and inventory skills. Participants interact with Registered Professional Foresters and other forestry professionals to help develop their plans and participate in cost-share opportunities.



Participants measuring tree diameter during a workshop

Forest stewardship is based on conservation principles that ensure protection of forest resources including wildlife, timber, soil, water recreational opportunities and natural beauty. Forest stewards actively manage their land by following management objectives based on multiple resources, are economically viable and conserve natural resources.



93

participants



4

completed workshops

6

workshops in various planning stages



7

participant ownership types:

11

individual

9

joint with partners

12

joint with family members or friends

5

family partnerships or LLC

15

family trust or estate

5

corporations or businesses

28

other (land trusts, open space districts, non-profits, etc.)



9

participants own <10 acres

19

participants own 10-49 acres

14

participants own 50-99 acres

25

participants own 100-499 acres

26

participants own 500+ acres



5

participants completed initial site visits

318

acres identified for treatment



0

complaints about using Zoom ☺



Kim Ingram, Forest Stewardship Education Initiative Coordinator
kcingram@ucanr.edu



Susie Kocher, Forest Stewardship Education Initiative Principle Investigator
sdkocher@ucanr.edu

Implementation of FMTF recommendation

The Forest Stewardship Education Initiative was developed based on a recommendation by the Forest Management Task Force's Forest Landowner Outreach and Education Working Group. CalFire contracted with the University of California Cooperative Extension to implement the pilot program from July 1st, 2019 to June 30th, 2021. A coordinator was hired in November 2019 and the first three-day in person workshops were held in January 2020 in Ukiah (Mendocino County), February 2020 in Berkeley, March 2020 in Redding (Shasta County). After the statewide Covid-19 based shut down, the workshop was transitioned to a blended learning format with 8 weeks of online content and one in-person workshop day. The first blended format workshop was held in June and July 2020 in El Dorado County. Additional blended format workshops are planned for September/ October in Plumas County and October/ November in Santa Cruz.



Ariel Roughton, UC Berkeley Blodgett Research Forest Manager explaining cell phone based mapping using Avenza

Forest stewardship workshops are held in collaboration with local, state and federal governments, community-based organizations, nonprofits and private industry partners including the Natural Resources Conservation Service, Resource Conservation Districts, Fire Safe Councils and Cal Fire. Workshop partners have participated on planning committees, provided location and logistical support, given presentations, participated in group breakout sessions, and assisted workshop participants in plan development. This collaboration allows participants to share knowledge and develop relationships with local agencies and professionals. Through the workshop, participants rely on these relationships with RPFs to fully develop and finalize their forest management plans. Participants utilize the contacts they've made with Cal-Fire and RCDs to then apply for CFIP and EQIP cost-share opportunities.

The Forest Stewardship Education Initiative has assembled a steering committee of leaders from partner organizations giving input to implementation of the workshop series. The steering committee meets every other month to review progress and give advice on next steps.

- Larry Camp – Forest Landowners of California
- Kevin Conway- CalFire
- Andrea Eggleton - FRST Corp
- Tracy Katelman – ForEverGreen Forestry
- Jenn Shephard – California Association of RCDs
- Jason Wells – Sonoma County RCD
- Martin Twer – The Watershed Center



Larry Camp, left, Forest Landowners of California, Redding workshop

Additional thanks to: UC Berkeley/ UCANR

- Rachele Hedges
- John Helms
- Michael Jones
- Fadzi Mashiri
- Ariel Roughton
- Rick Satomi
- Bill Stewart
- Ryan Tompkins
- Rob York

Partner Organization:

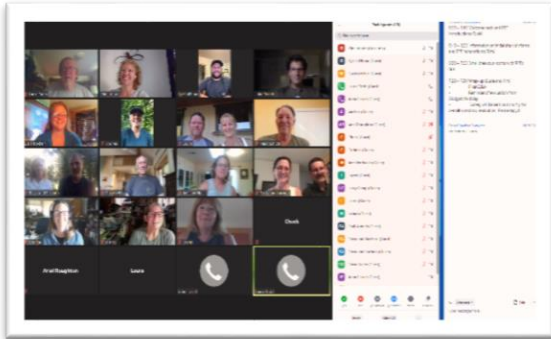
- Larry Camp
- Lois Kauffman

- Cheryl Miller
- Kuldeep Singh
- Brian West

Participating RPFs:

- Kate Anderson
- Andrea Eggleton
- Fred Euphrat
- Jacob Harrower
- John Henshaw
- Tom Kisluk
- Len Lindstrand
- Kyle Mills
- John Pickett
- Sarah Oldson

Strategies to increase landowner engagement



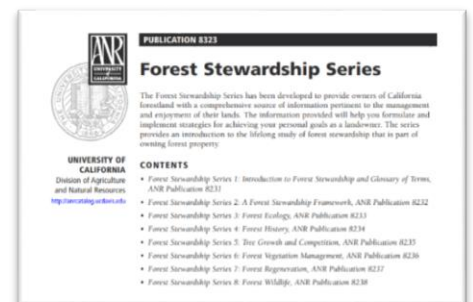
Online workshop participants in July 2020

Develop and offer workshops in diverse locations on a regular schedule:

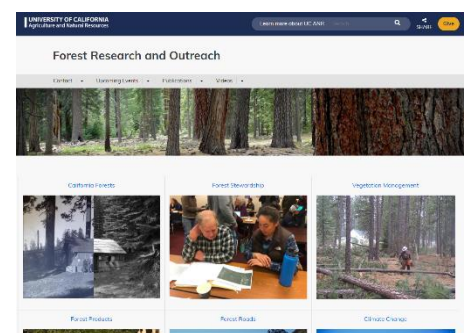
Four workshops have been completed to date with an additional six in various planning and implementation stages through May 2021. This also includes a tribal focused workshop in February 2021. Follow-up workshops are also being planned at the request of participants. The first three workshops were held in person, and the last was held through a hybrid learning style involving on-line learning assignments, zoom meetings, and one in-person day to demonstrate silvicultural methods and field skills.

Provide information within a coordinated educational framework:

The workshop content is based on the [24-part Forest Stewardship Series](#), a peer-reviewed publication series on forestry and forest management published by the University of California Cooperative Extension, targeted at family forest owners. The workshop provides instruction based on this information and also includes hands-on activities to help participants implement concepts. Interactions with instructors, other participants, and forestry professionals empowers participants to develop their management goals by asking questions and making informed decisions. Materials for the workshops, along with the Forest Stewardship leaflet series are hosted on the UCANR Forest Research and Outreach website, <https://ucanr.edu/forestry/>. Experienced landowners are empowered to share their experiences with others during the workshops. This includes those that already have management plans and, members of fire safe councils and prescribed burn associations.



The cover page of the 24-part Forest Stewardship leaflet series

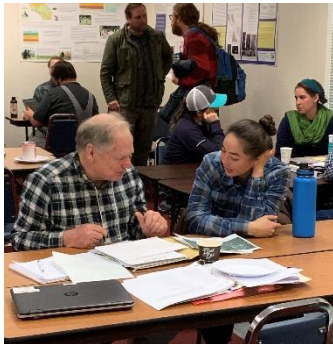
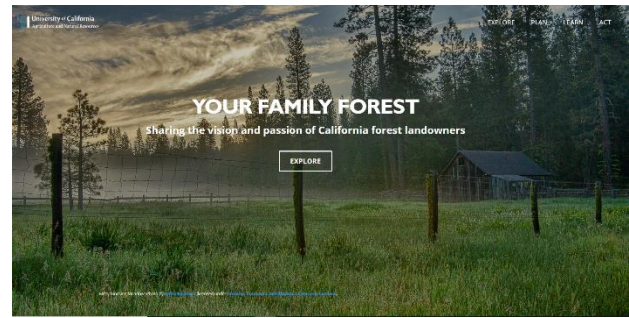


The Forest Research & Outreach web-page

Advertise & supplement information on-line and with social media:

Workshops have been advertised using flyers, email blasts, FaceBook, Twitter by UCCE and partners. Each workshop has had registration at capacity (from 25 to 35 depending on the location). Workshop information has been supplemented with bi-monthly newsletters about forest stewardship planning sent to all previous participants. A forest stewardship blog will be started in summer 2020.

In addition, the [UCANR family forest website](https://www.ucanr.edu/familyforest) was refurbished and is being supplemented to enable the blended learning format currently in use due to Covid-19 related restrictions on meeting in person. The website was developed to help landowners complete forest plans on-line. The California Family Forest website (<https://www.cafamilyforest.org/>) contains videos and on-line activities to help forest land owners manage their property. It has been key to being able to quickly transition to on-line learning.



Workshop participant working one-on-one with a Registered Professional Forester

Empowering landowners:

Through the educational series, participants begin to gather information and draft specific sections of their forest management plan (for example, site history, maps, management goals and objectives). Landowners can then provide this draft to RPFs which reduces the amount of time RPFs need to spend on those sections. Having clear goals and objectives prior to meeting with an RPF also helps to guide the discussion about management activities. Costs are also reduced for landowners through an initial site visit honorarium paid to RPFs at the completion of the visit and submission of required forms.

Participant feedback:

Evaluation of the pilot effort is on-going. Workshop evaluation forms have included the following comments:

- *“Workshop is great, good technical information, making local contacts is extremely important. So, it was great to see so many experts.”*
- *“It was a fun and productive weekend. Great speakers - knowledgeable and good presentations.”*
- *“I feel much clearer on the steps to make a forest management plan, what I can do myself, and what we need to a hire a professional for.”*
- *“Thank you for offering this workshop. Even in a pandemic it was effective. Now I have work to do!!”*



Workshop participants discussing fuels reduction projects during the in-person field day at Blodgett Research Forest in July 2020

Thanks to Our Partners:

