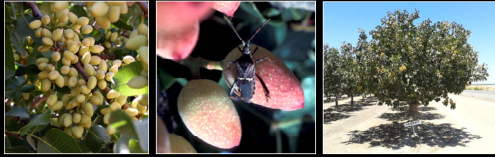


Leaffooted Bug Biology and Management



Houston Wilson
Asst. Cooperative Extension Specialist
Dept. Entomology, UC Riverside
Kearney Agricultural Research and Extension Center

Outline for Today

Origins and Distribution

- Arrival in California
- Current pest status

Basic Biology and Seasonal Ecology

- Life stages
- Seasonal phenology

Modern Management

- Monitoring
- Biological control
- Insecticide sprays

Key Additional Resources

Local Farm/IPM Advisor

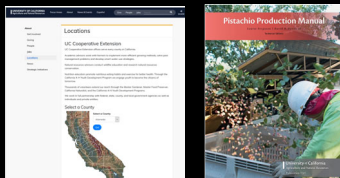
- <https://ucanr.edu/About/Locations/>

UC Statewide IPM Program Website

- <https://www2.ipm.ucanr.edu/agriculture/pistachio/Leaffooted-Bugs/>

Pistachio Production Manual (2016)

- UC ANR Publication #3545
- <https://anrcatalog.ucanr.edu/Details.aspx?itemNo=3545>



Leaffooted Plant Bug Origins, Arrival in CA, Current Pest Status

Leaffooted Bugs (LFB) Origins + Arrival in CA

Species Name

Order: Hemiptera

Family: Coreidae

Species 1: *Leptoglossus zonatus*

Species 2: *Leptoglossus clypealis*

Species 3: *Leptoglossus occidentalis*



Arrival in California

Leptoglossus found throughout the Americas

1900s – Reported *L. zonatus* in Baja, Cen. America, So. America

1940s – Reported *L. zonatus* on citrus and pomegranate in AZ

1980s – Reported *L. clypealis* on pistachio in CA

Leaffooted Bugs (LFB) Key Species in California

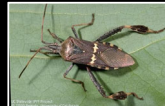
Leptoglossus zonatus

- Two distinct yellow marks on pronotum
- Most common species currently



Leptoglossus clypealis

- Distinct clypeus points outward from head
- Used to be abundant, now less common



Leptoglossus occidentalis

- No marks, no clypeus
- Rare, mostly a forest/conifer pest



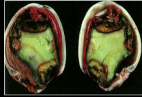
Leaffooted Bugs (LFB)

Current Pest Status

- Pierce-suck feeder, primarily seeds
 - But attack a wide range of hosts
- Directly attack pistachio nuts
 - Early season (Apr – Jun)
 - Epicarp lesion
 - Nut drop/abortion
 - Late season (Jun-Sept)
 - Kernal necrosis
 - "Achilles heel"
- Transmit Pathogens
 - Stigmatomycosis
 - Botryosphaeria
 - Shoot blight



Epicarp Lesion



Kernal Necrosis



Damage through stem base

Leaffooted Plant Bugs Basic Biology and Seasonal Ecology

Basic Biological Parameters

Life Stages

Eggs



Strands of barrel-shaped eggs on twigs, nuts, leaves

→ Nymphs



Five immature stages

→ Adults



Adult legs with distinct leaf shape

Aggregation Behavior Overwintering and In-Season

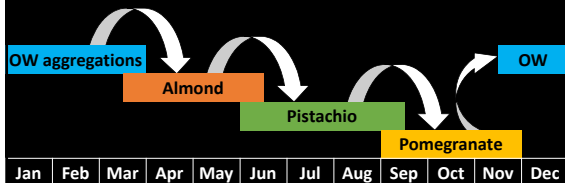


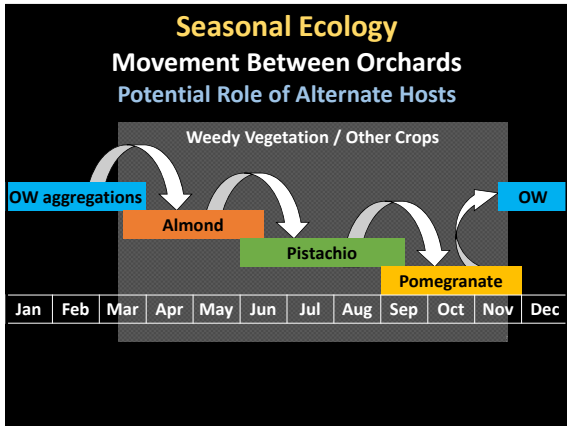
Aggregation Behavior Overwintering and In-Season

- Overwinter as adults in sheltered areas
- Overwintering sites can include...
 - Woodpiles
 - Barns
 - Residential areas
 - Eucalyptus
 - Citrus
 - Palm
 - Cypress
 - Juniper
 - Riparian areas



Seasonal Ecology Movement Between Orchards Adults Become Active March - May





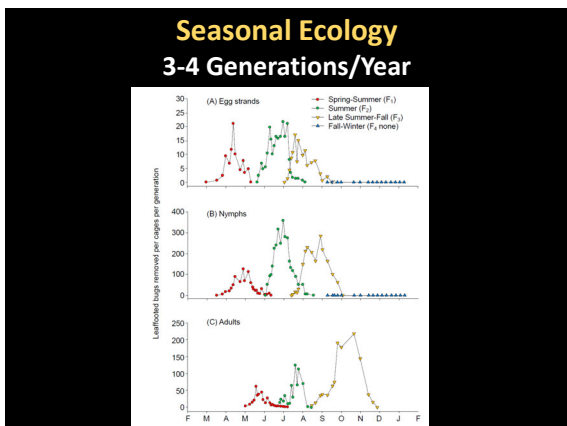
Seasonal Ecology

Movement Between Orchards

Gut Content Analysis Shows Alternate Hosts

Gut Contents	Orchard Type		
	Pistachio	Almond	Pomegranate
Pomegranate	0.2	1.0	68.2
Pistachio	34.8	16.4	0.8
Cucurbita spp.	32.6	1.1	2.7
Almond	2.2	27.6	0.0
Helianthus spp.	3.8	10.7	1.2
Peppers	0.0	12.6	0.0
Pinus spp.	0.0	7.2	0.0
Sowthistle	7.0	0.1	0.0
Corn	1.0	2.1	0.7
Alfalfa	0.2	2.8	0.0
Kiwi	0.3	0.4	0.4
Juniper	0.7	0.2	0.1
Strawberry	0.1	0.0	0.1
Cucumber	<0.1	<0.1	<0.1
Potato	<0.1	<0.1	<0.1
Tomato	<0.1	<0.1	<0.1
Other	0.1	<0.1	<0.1

Data: D. Evans (CSU Fresno)



Leaffooted Plant Bugs Integrated Pest Management

LFB Management in Pistachio Integrated Pest Management

Key Tools

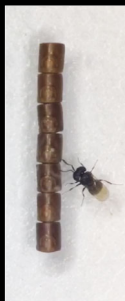
1. Biological Control
2. Monitoring
3. Insecticides



Biological Control Natural Enemies

Parasitoids

- *Gryon pennsylvanicum*
 - Most active later in the season
 - Doesn't control the spring adults



Photos: R. Straser, UCR


Monitoring

Beat Sampling, Visual Searching

Start monitoring clusters in April

Monitoring Techniques

- Beat sampling
 - Early in the morning, bugs less active
 - Hold tray below, strike clusters
 - Examine what falls out
 - Nymphs? Consider treating
- Look for egg masses
- Look for damage (small, black nuts)




UC Statewide IPM Program
© 1992 Syngenta, University of California

Chemical Controls

Pyrethroids

- Bifenthrin (Brigade)
- Cyfluthrin (Baythroid)
- Lambda-cyhalothrin (Warrior)
- Permethrin (Pounce, Ambush)



Make the Most of Your Spray

- Calibrate sprayer, check weather conditions, go slow

Keep in Mind

- Orchard proximity to potential overwintering sites
- Dry-down or tillage of adjacent weedy fields
- Populations are fast/sporadic → be on the lookout

Key Additional Resources

Local Farm/IPM Advisor

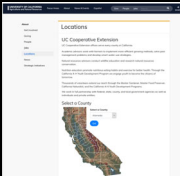

- <https://ucanr.edu/About/Locations/>

UC Statewide IPM Program Website

- <https://www2.ipm.ucanr.edu/agriculture/pistachio/Leaffooted-Bugs/>

Pistachio Production Manual (2016)

- UC ANR Publication #3545
- <https://anrcatalog.ucanr.edu/Details.aspx?itemNo=3545>

Thank you!!

Houston Wilson

Houston.Wilson@ucr.edu | <http://treecrops.ucr.edu/> | @treecrops