

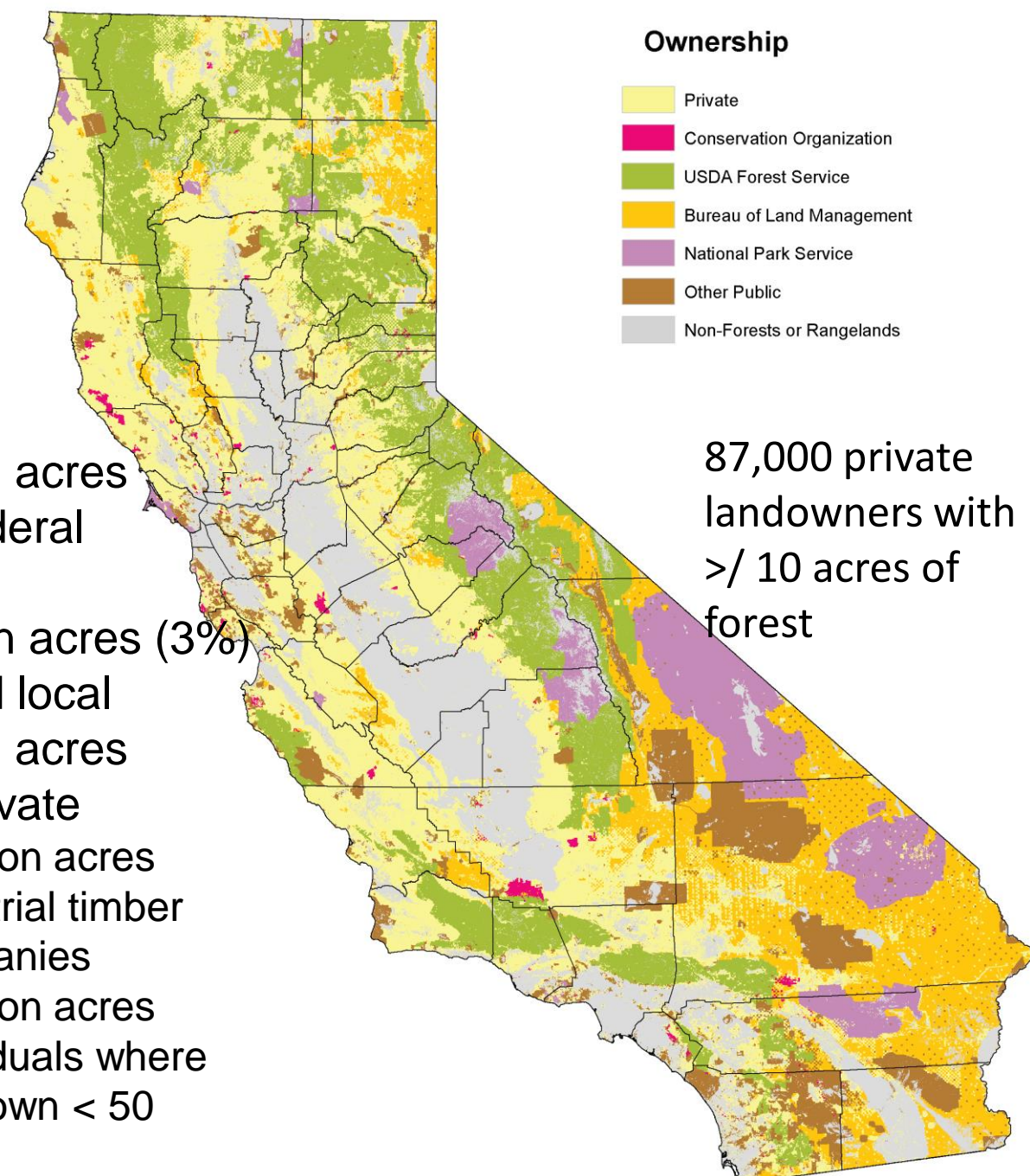
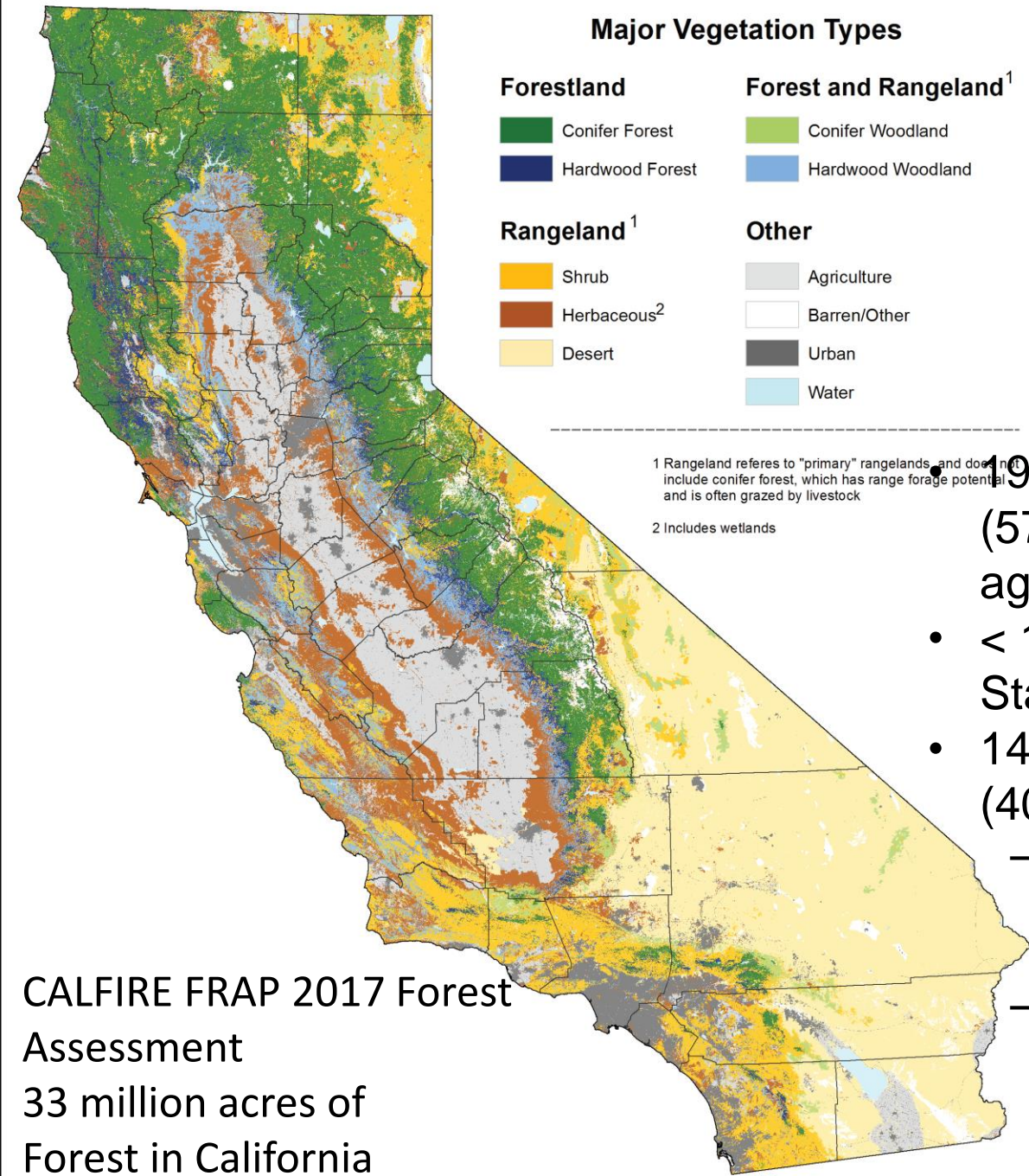
Forest Stewardship

- o Ownership – Issues – Concerns – Motivations - Goals

Susie Kocher, Forestry Advisor, RPF #2874

University of California Cooperative Extension Central Sierra





19 million acres (57%) federal agencies

- **< 1 million acres (3%) State and local**
- **14 million acres (40%) private**
 - 5 million acres industrial timber companies
 - 9 million acres individuals where 90% own < 50 acres

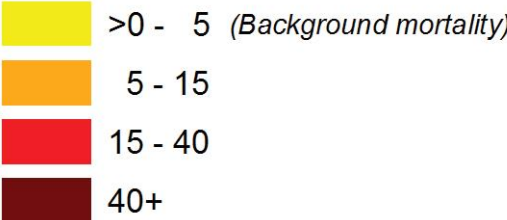
87,000 private landowners with >/ 10 acres of forest

CALFIRE FRAP 2017 Forest Assessment
33 million acres of Forest in California

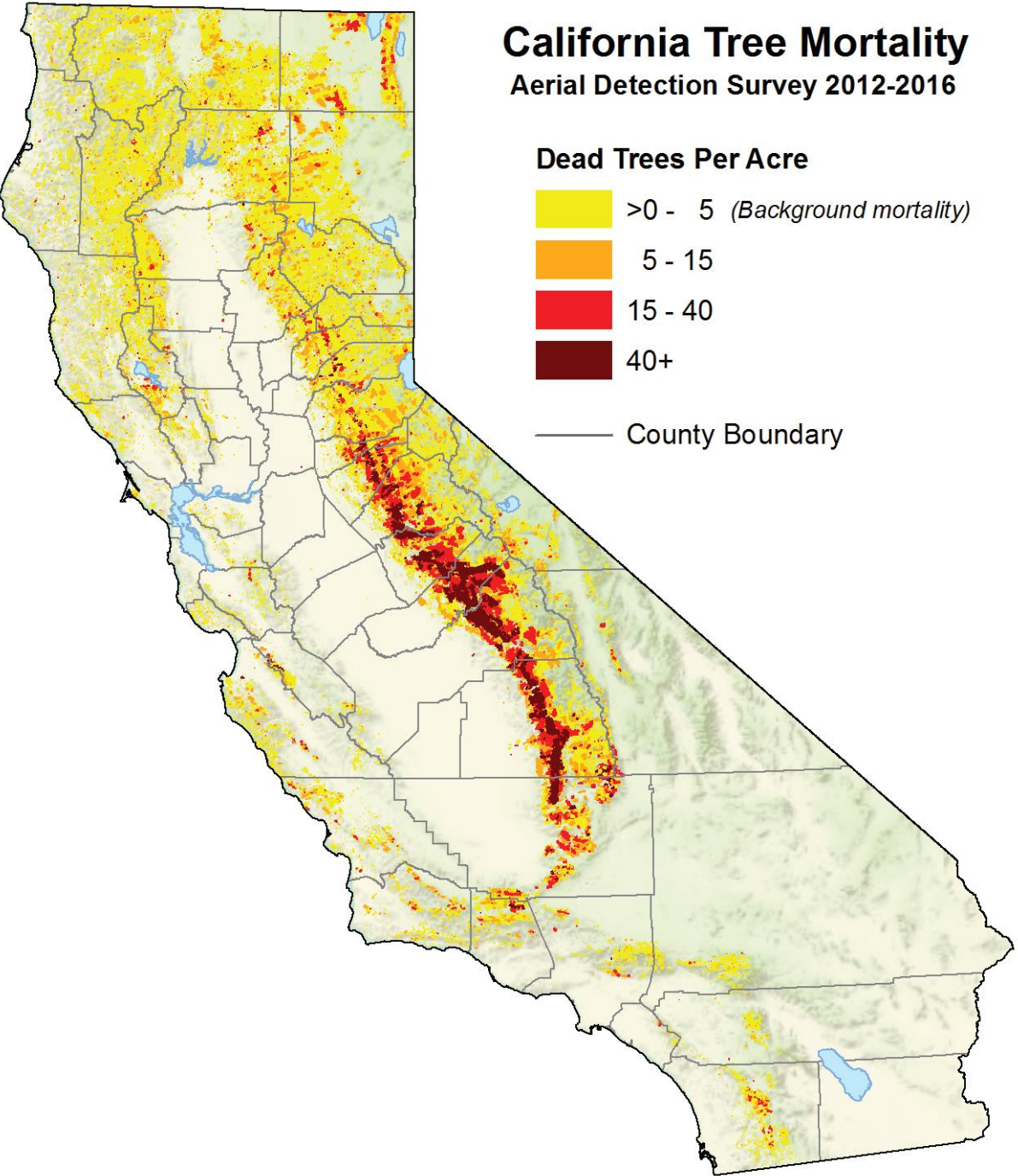
California Tree Mortality

Aerial Detection Survey 2012-2016

Dead Trees Per Acre



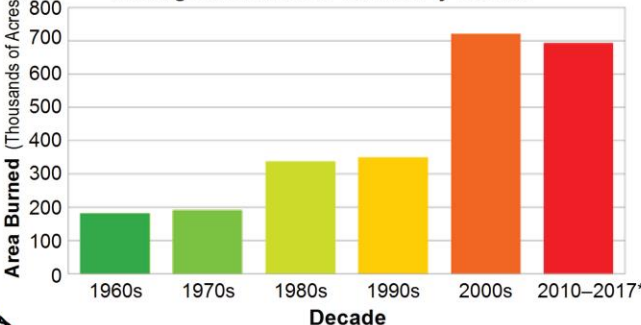
County Boundary



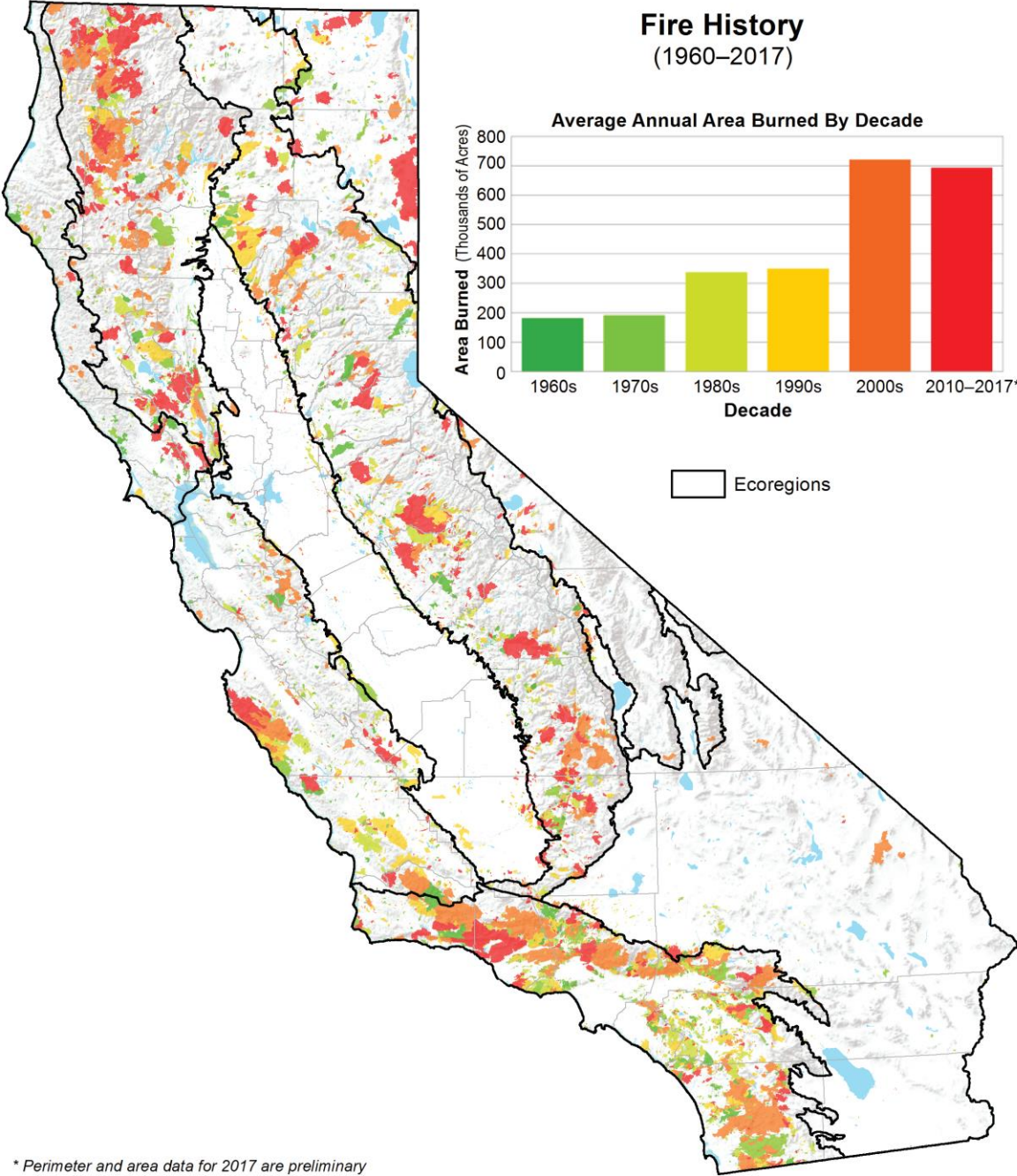
Fire History

(1960-2017)

Average Annual Area Burned By Decade



Ecoregions



* Perimeter and area data for 2017 are preliminary



California forests are fire adapted systems - Consequences of fire suppression

Displacement and reduction of understory plants due to shade

Conversion of shrub habitats to conifer thickets

Displacement of deciduous vegetation by conifers, especially in riparian areas

Reduction and loss of mountain meadows to conifer encroachment

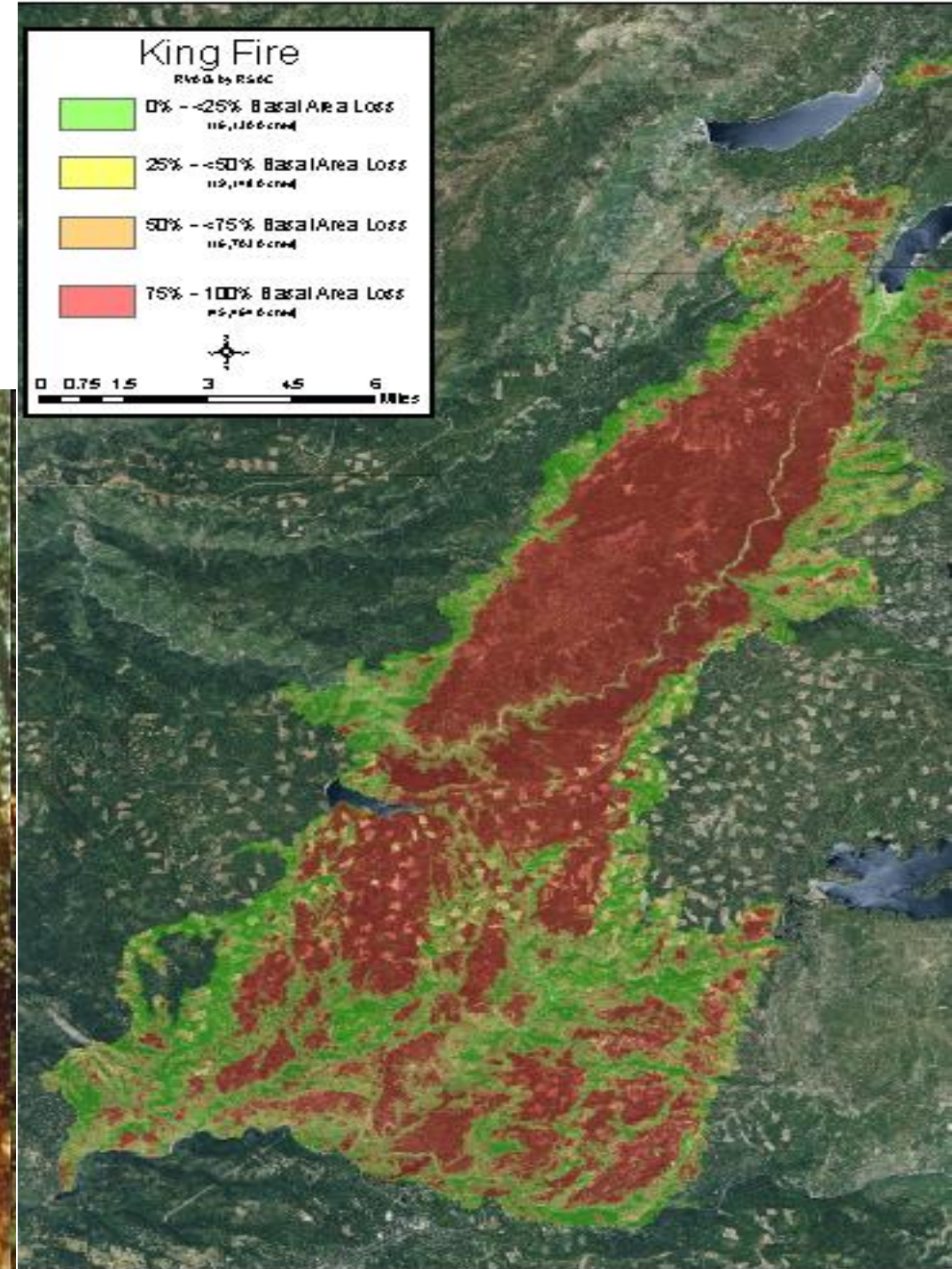
Reduction and loss of habitat of more open and non-forested habitats

Huge build up in forest fuels

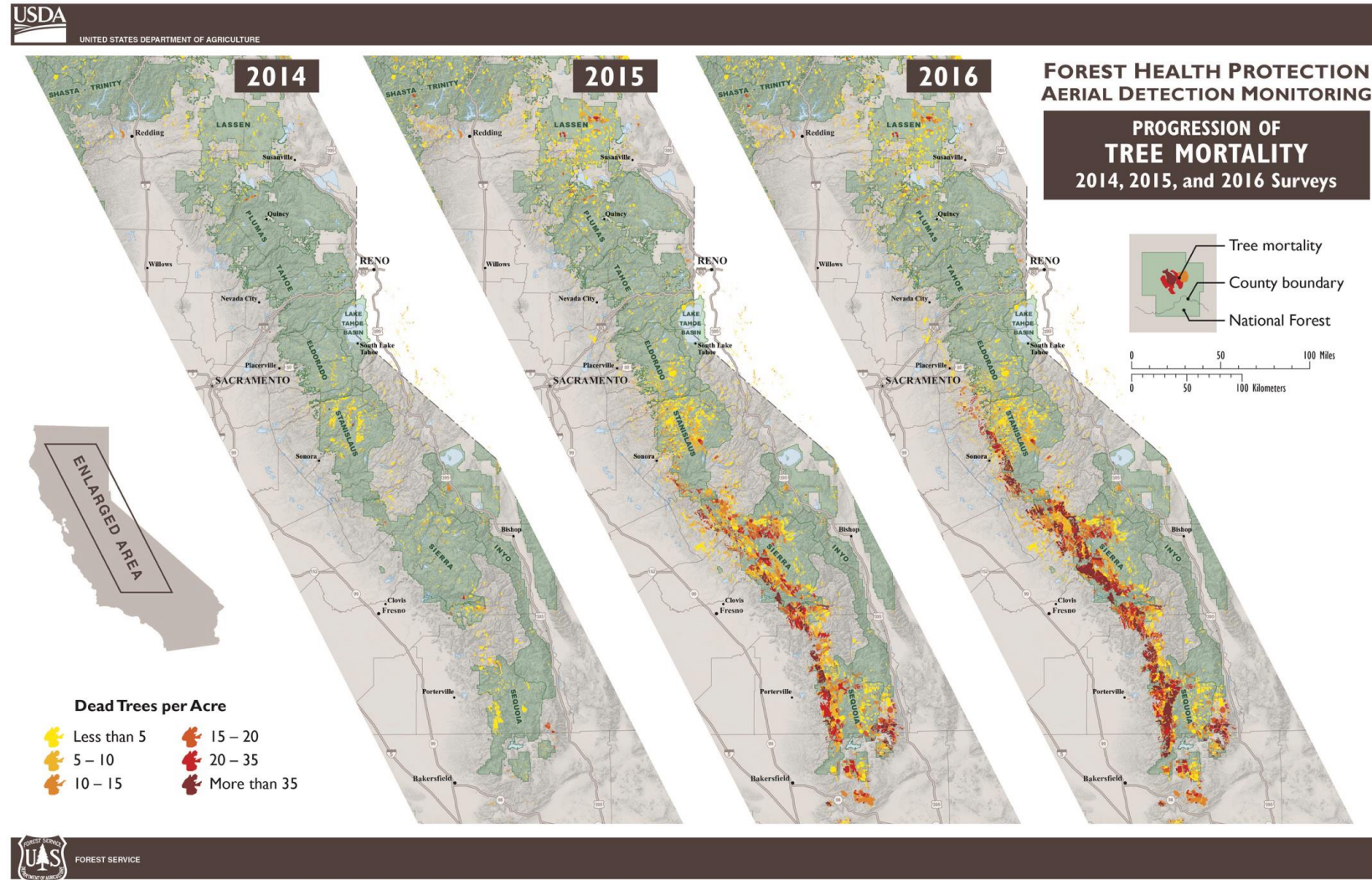
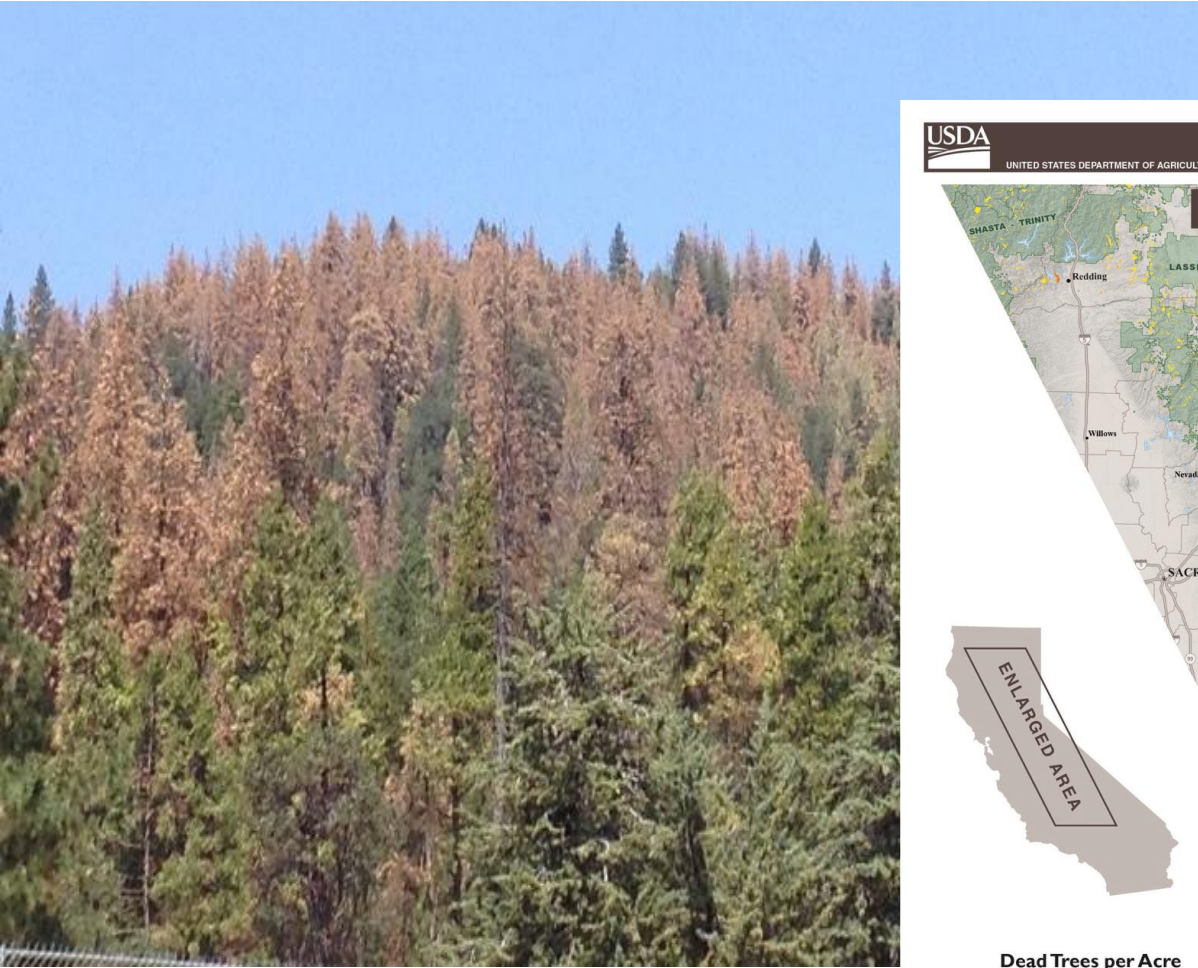
Increased stress due to water competition leaves trees more vulnerable to insect and disease

Increase in high severity fires

- Forests overcrowded and unhealthy – increased mortality
- Fires now more likely to be high severity meaning most or all trees are killed



Increase in tree mortality

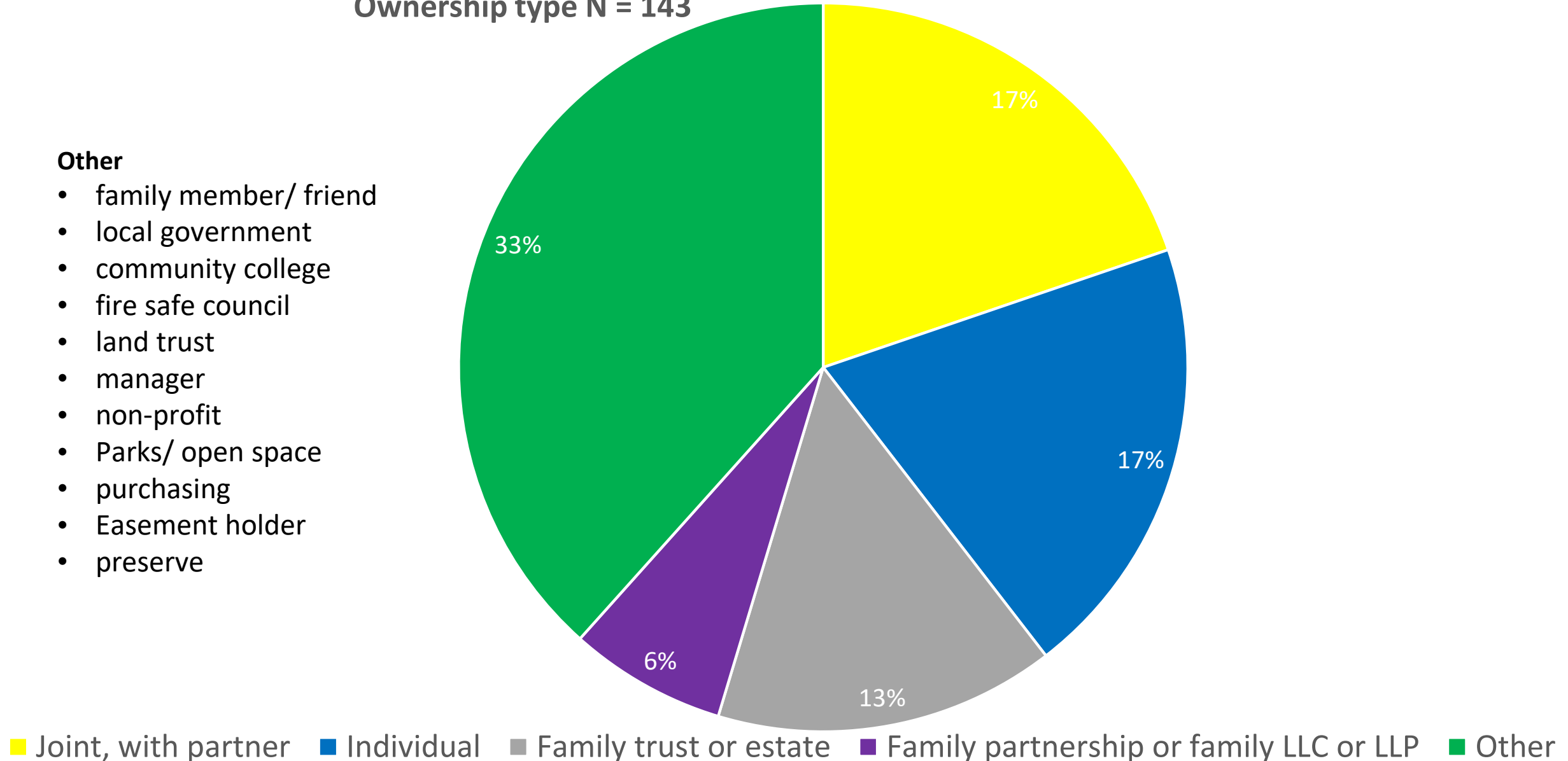


Results of the assessments taken by the participants in this workshop

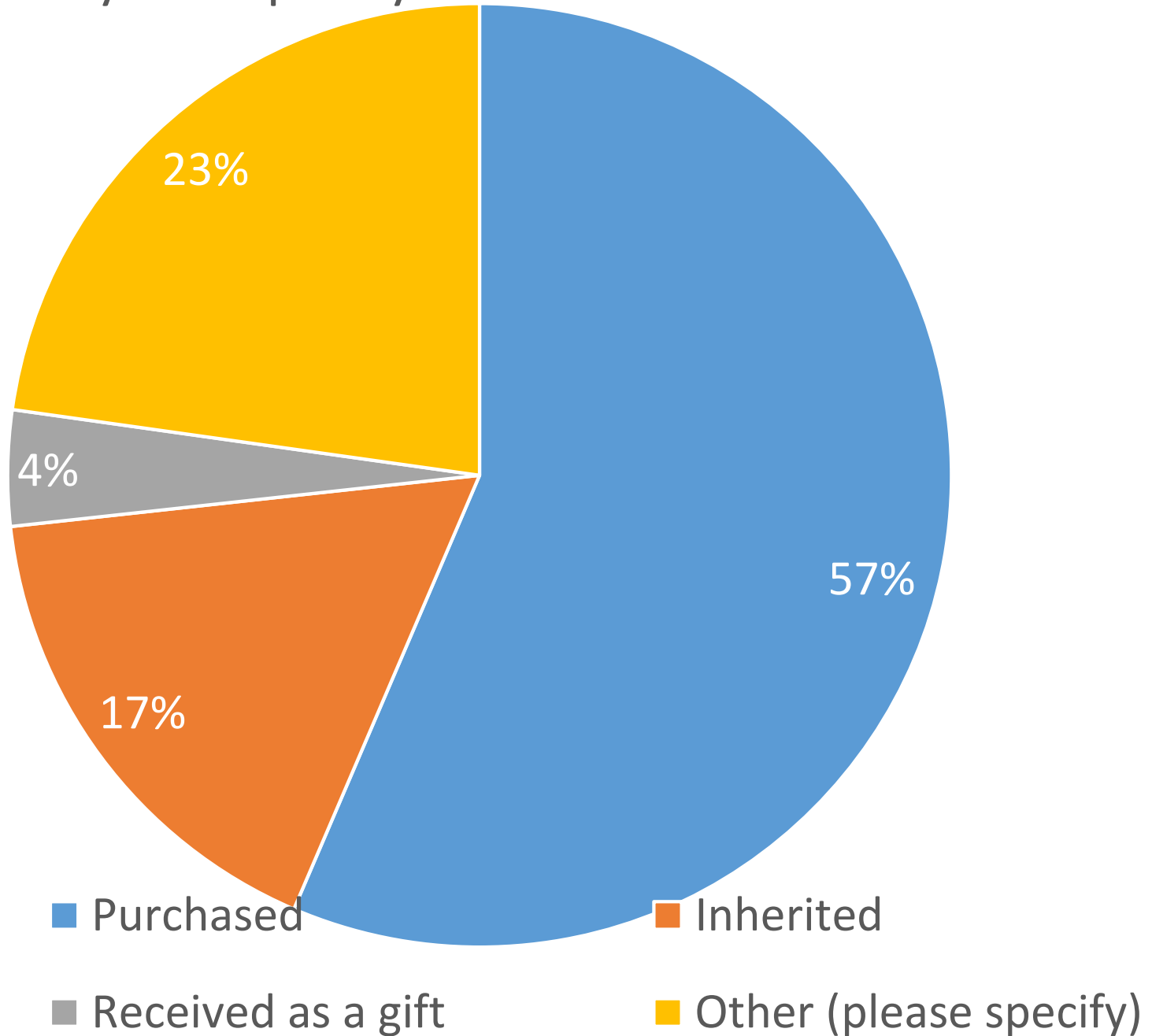
Ownership type N = 143

Other

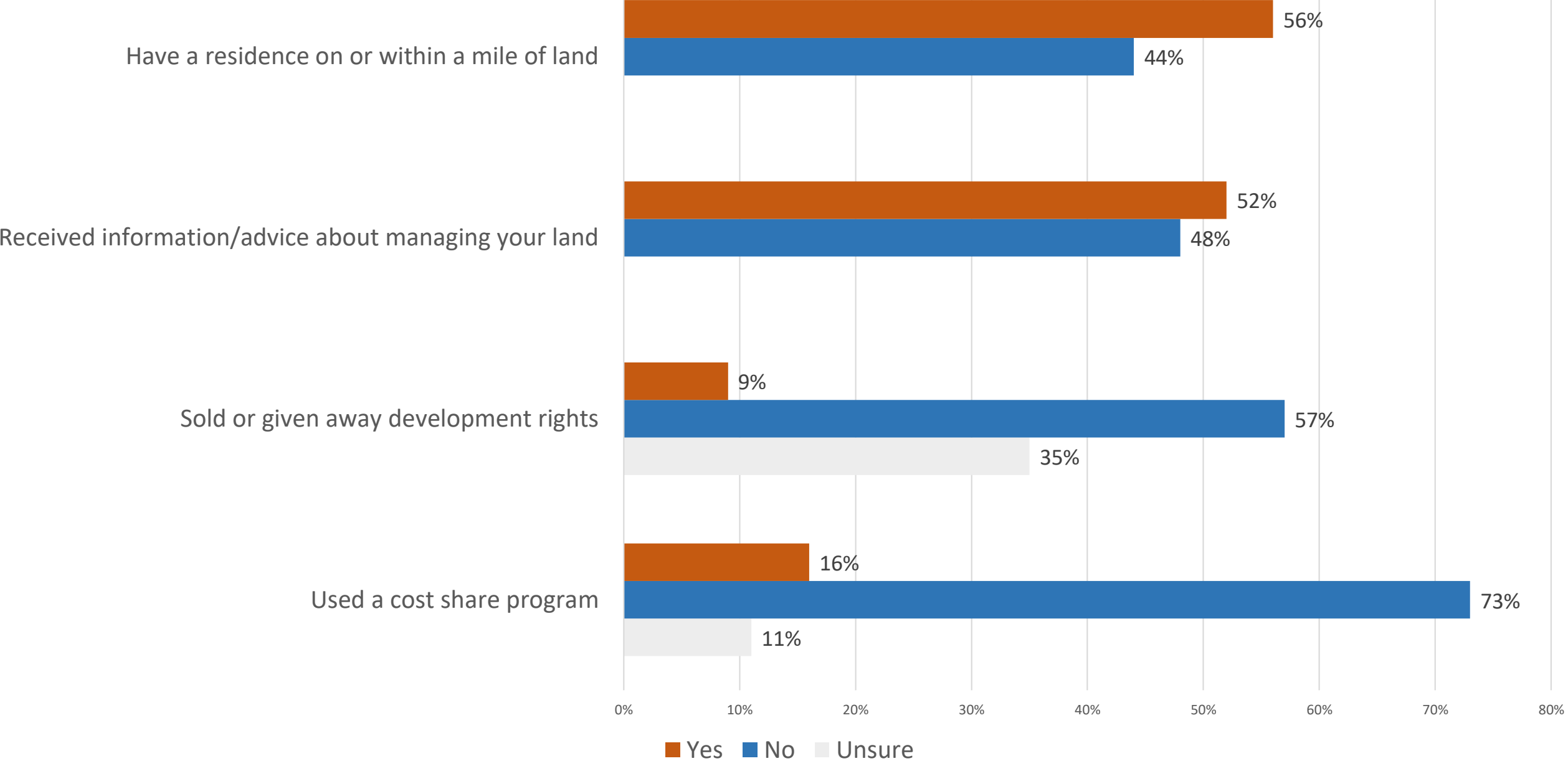
- family member/ friend
- local government
- community college
- fire safe council
- land trust
- manager
- non-profit
- Parks/ open space
- purchasing
- Easement holder
- preserve



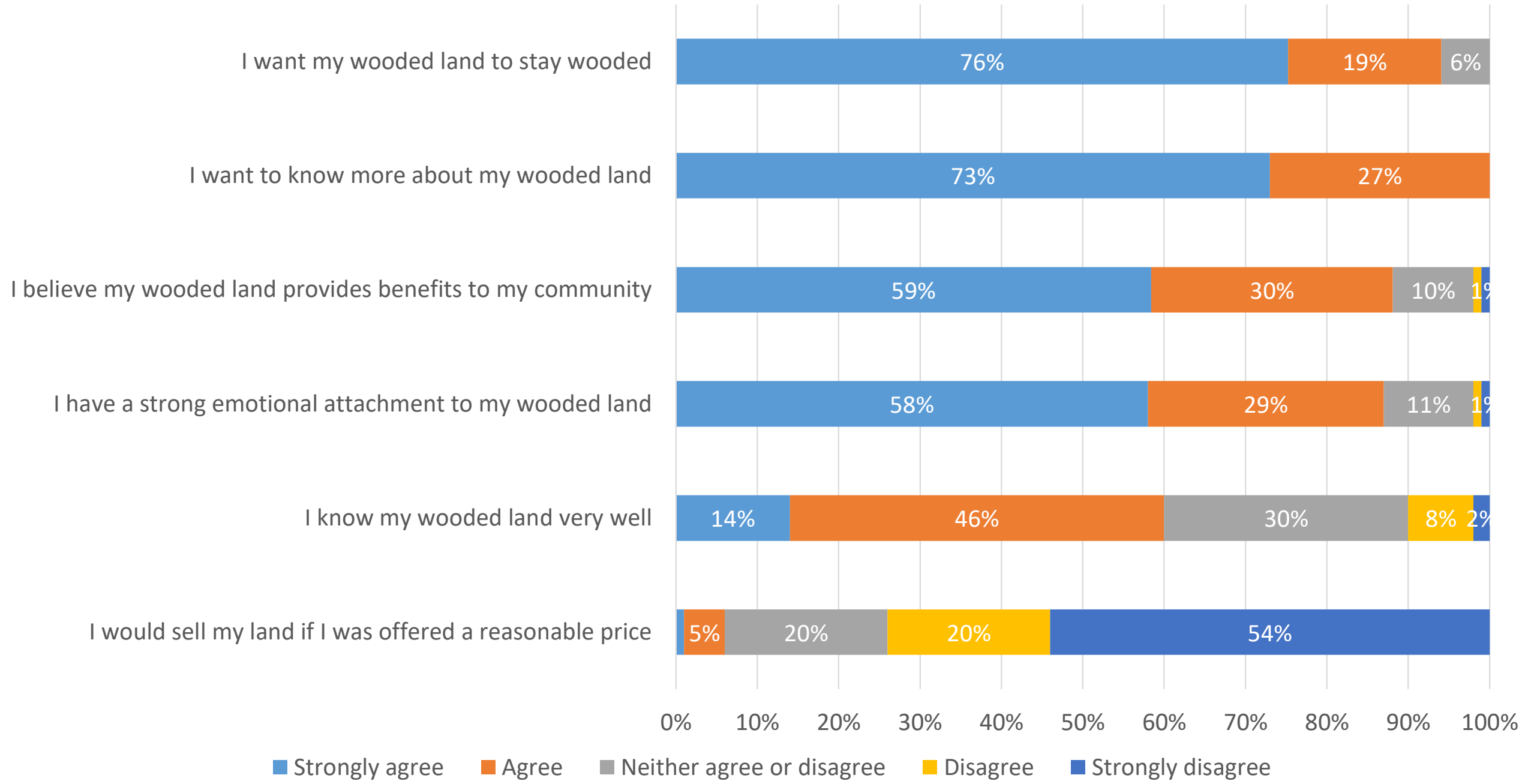
How did you acquire your wooded land in California? N= 145



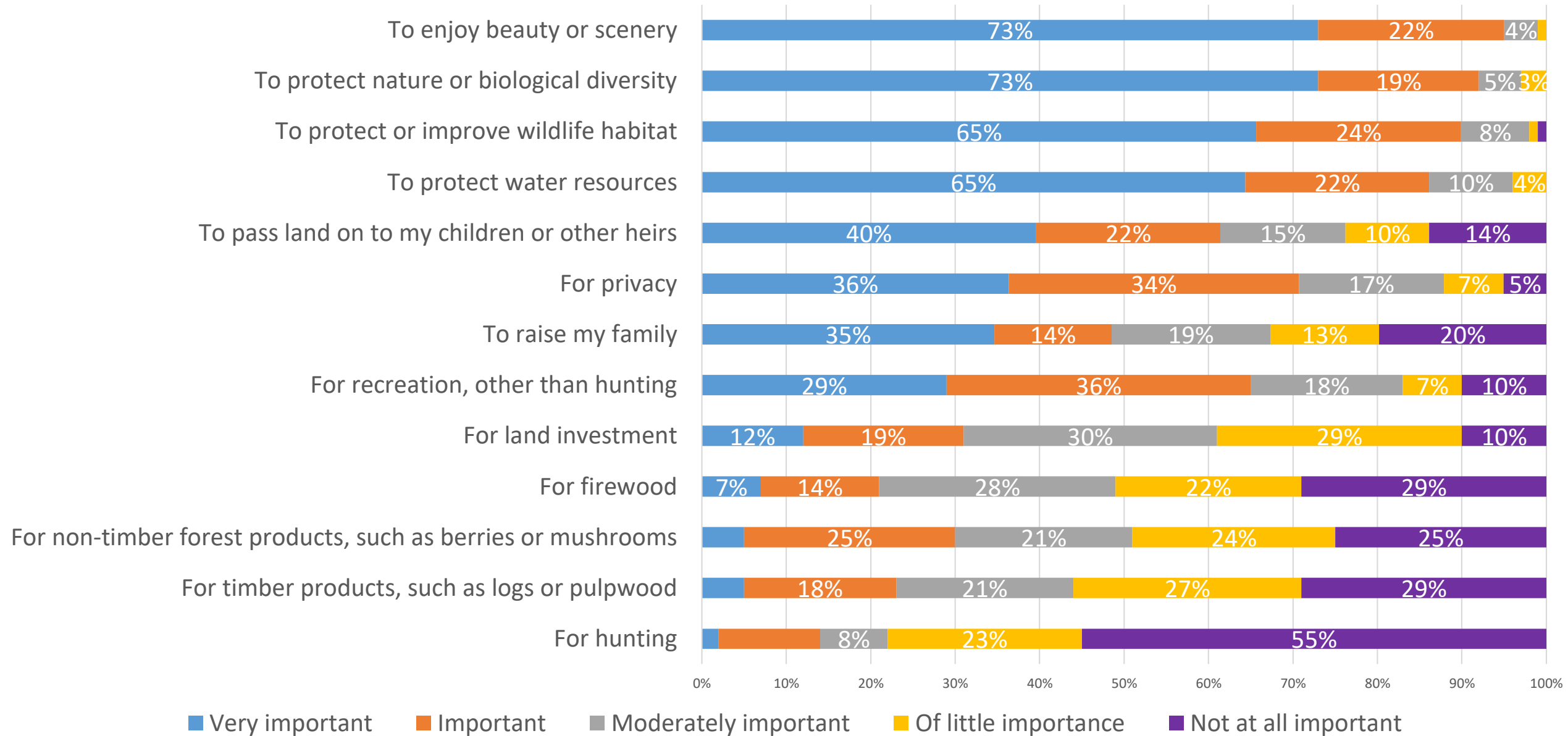
Have you? N = 140



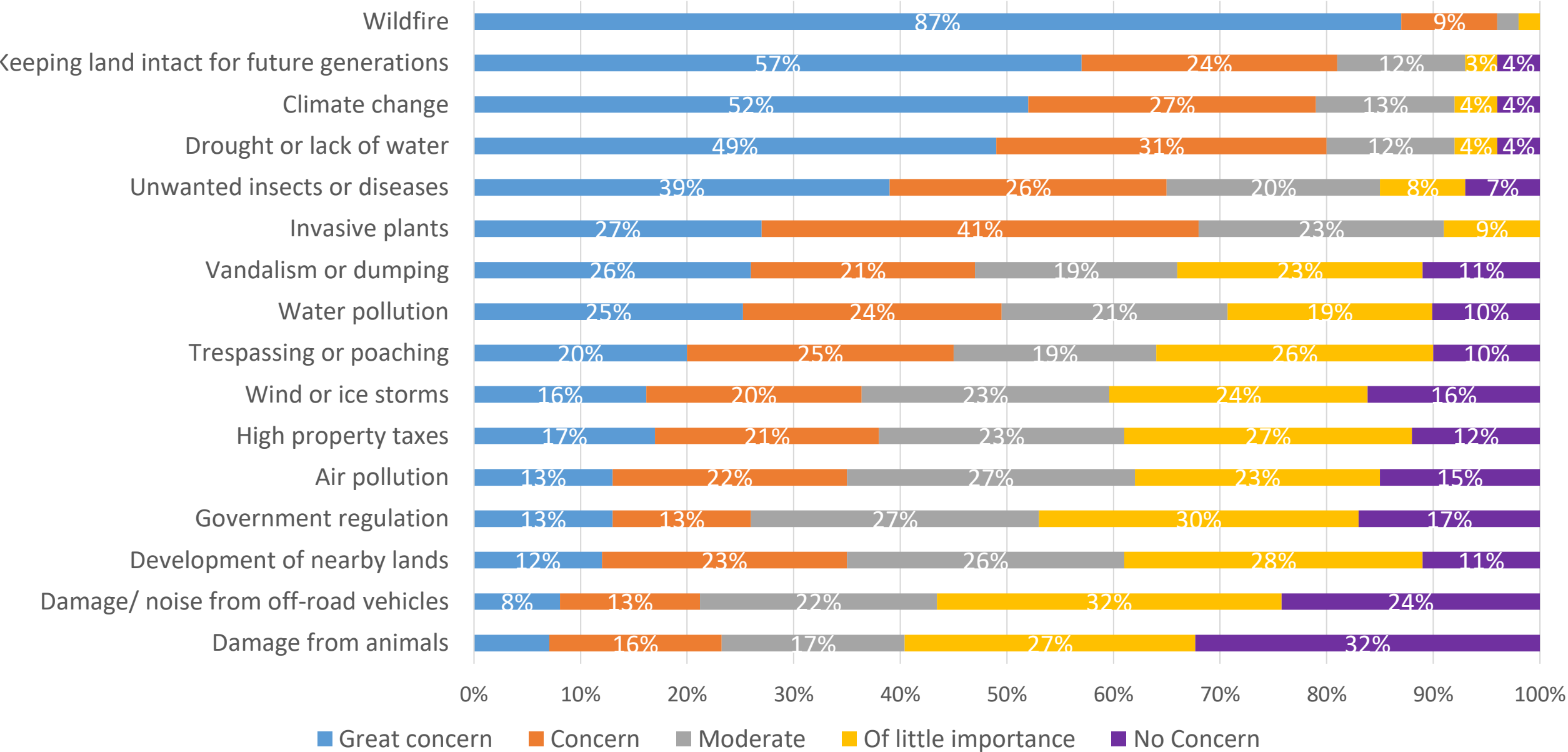
Please indicate your level of agreement with the following statements (N = 135):



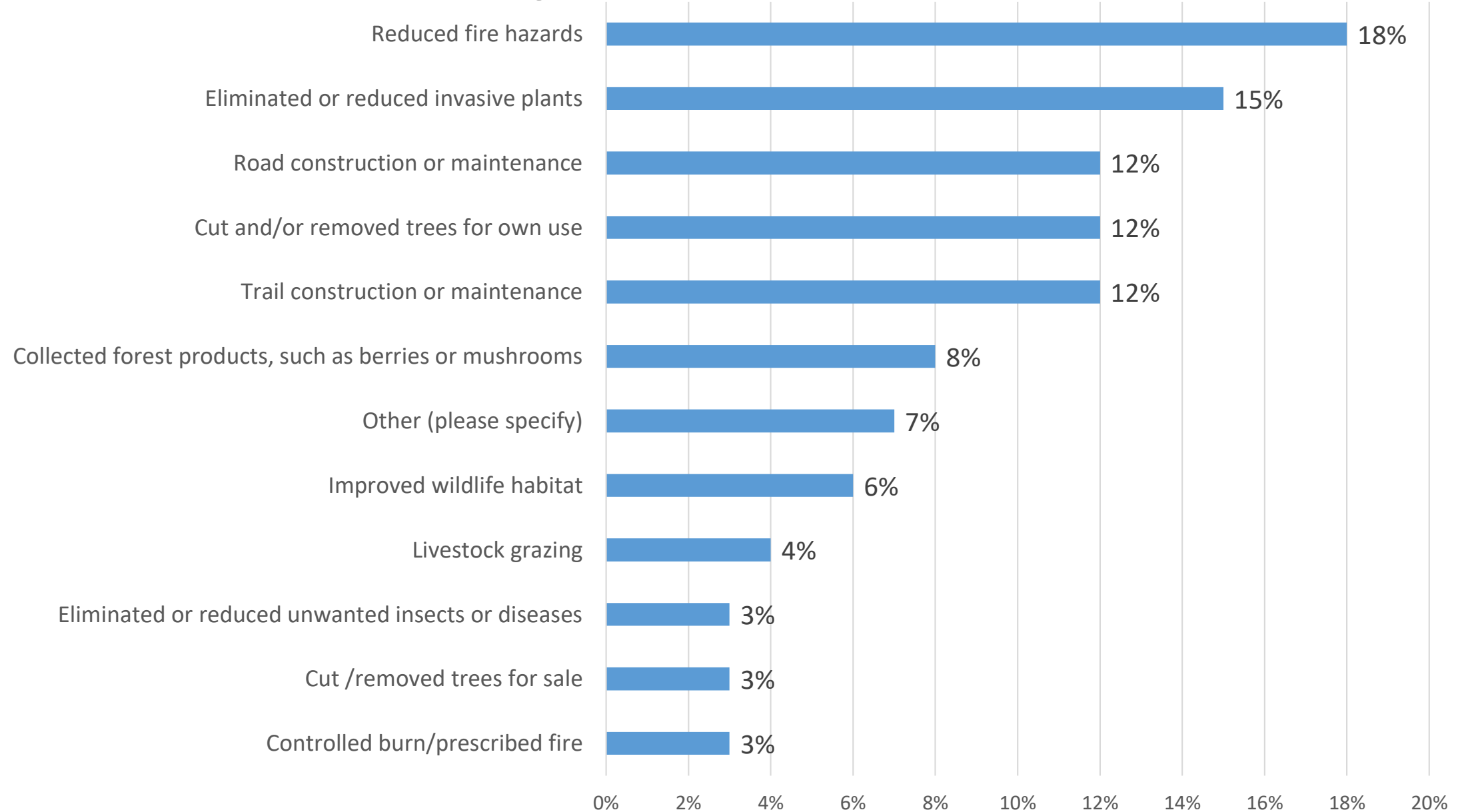
How important are the following reasons for why you currently own your wooded land in California? N=142



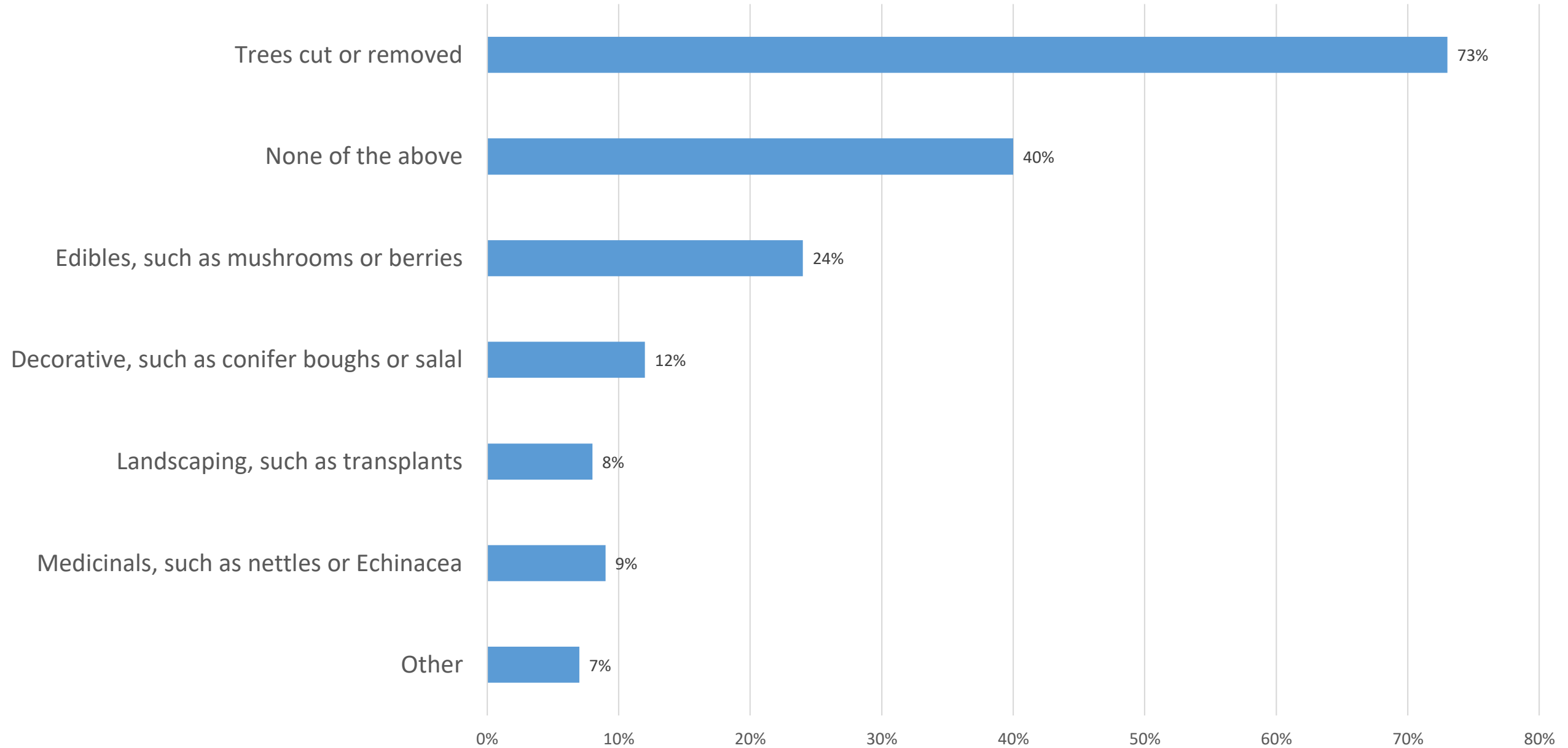
Please indicate your level of concern about each of the following topics for your wooded land in California. N = 139



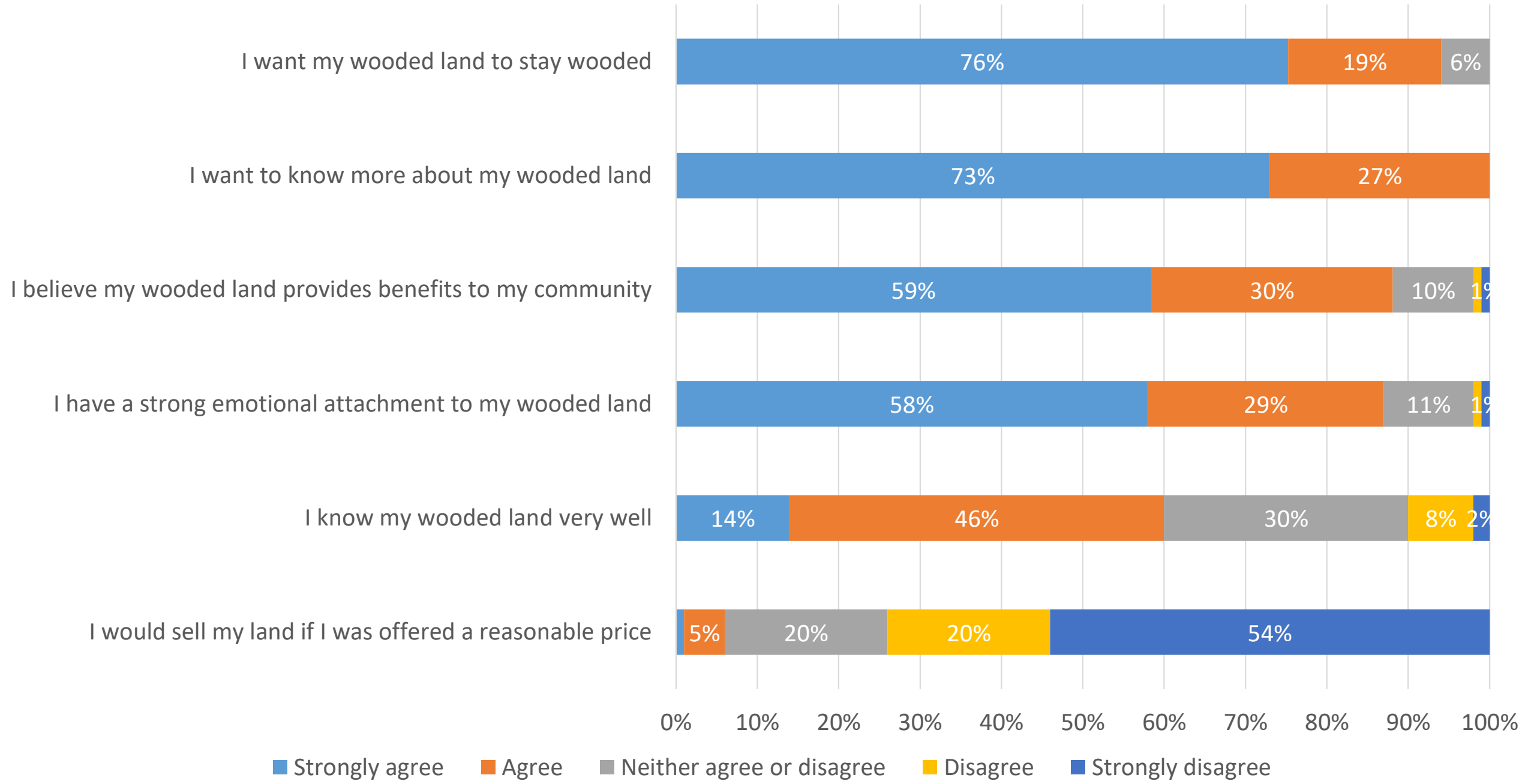
Which of the following have occurred on your land in the past 5 years? N = 139



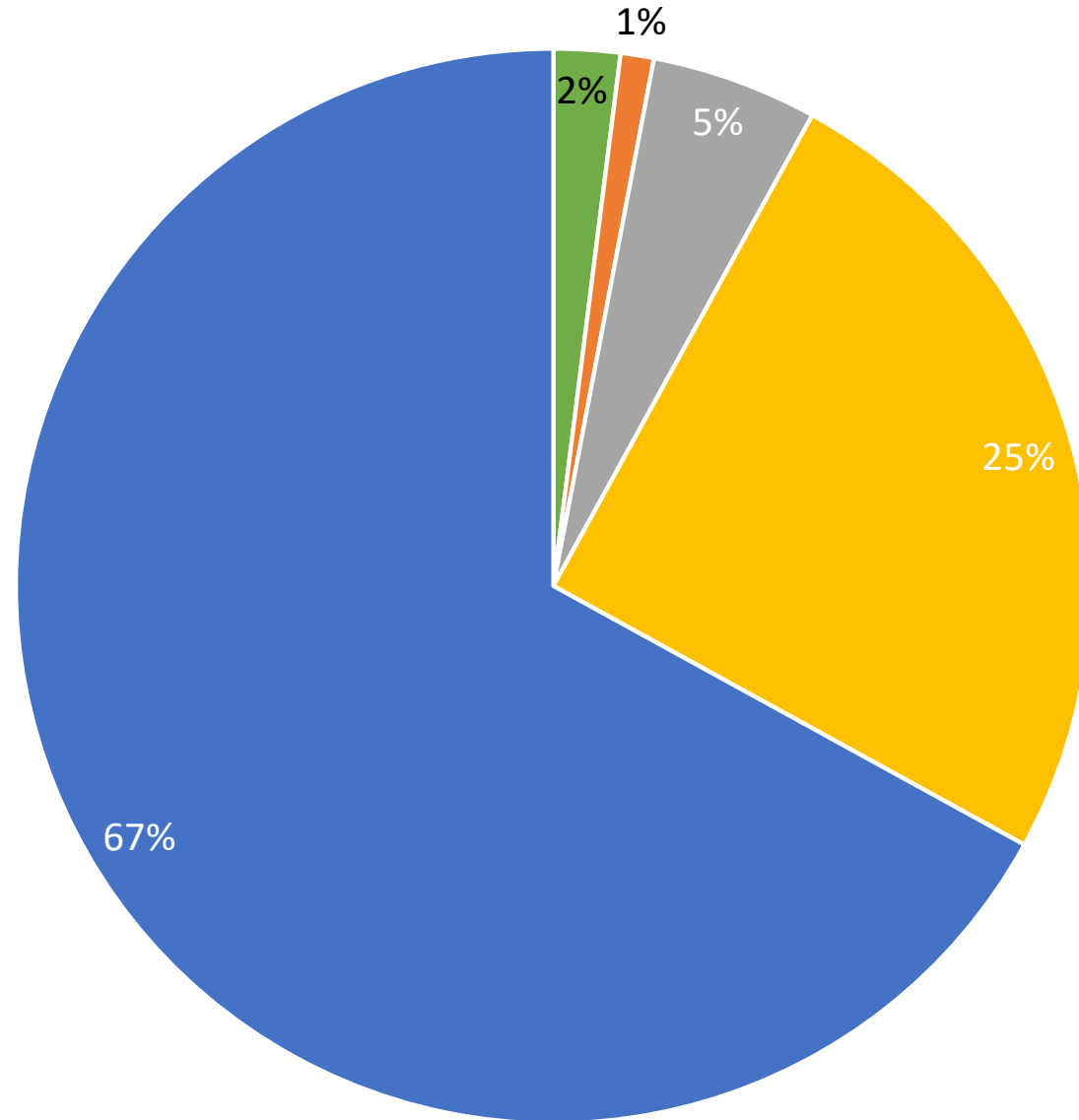
Which of the following have been collected from any of your land since you have owned it? (N=135)



Please indicate your level of agreement with the following statements (N = 135):

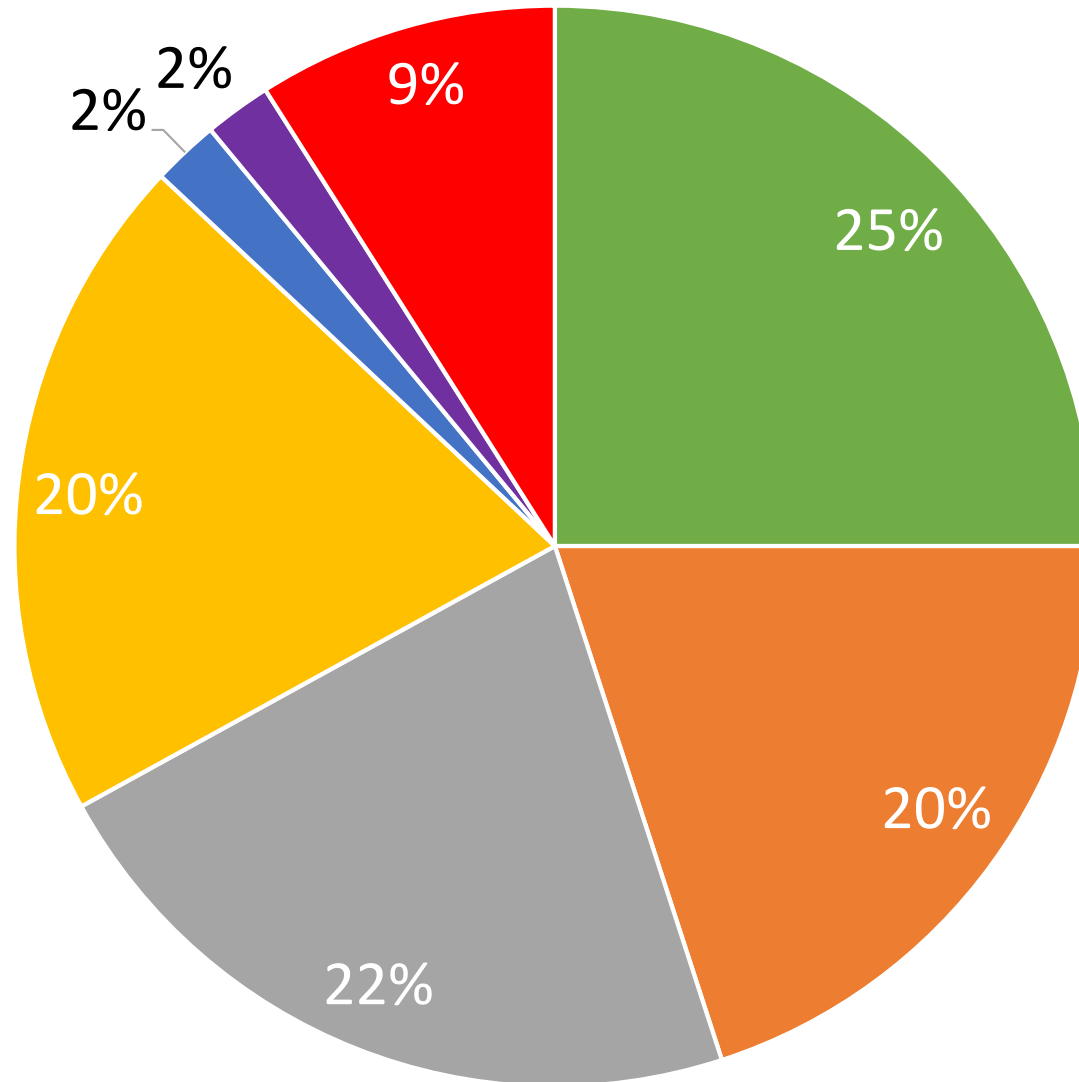


How likely is it that you will sell or give away any of your wooded land in the next 5 years? N = 134



■ Extremely likely ■ Likely ■ Undecided ■ Unlikely ■ Extremely unlikely

Landowners' forest type N= 126



■ Coastal redwood
■ Oak woodland
■ Unsure

■ Mixed conifer
■ Sub-alpine

■ Douglas-fir-mixed evergreen forest
■ Montane chaparral