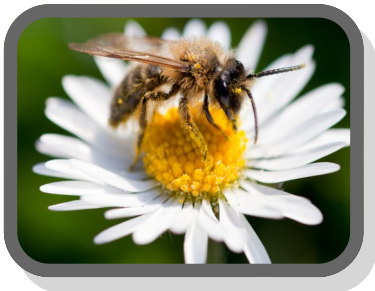


# Required Information for the Opt-In Application

- ⇒ Your name, address & contact information.
- ⇒ The reason for applying (i.e. business, allergy, elderly, daycare).
- ⇒ If your concern is due to an allergy, you will need to provide a medical note completed by a physician.
- ⇒ The address of the potential sensitive site if it differs from your home address.
- ⇒ Further description of the potential sensitive site may be needed, (e.g. maps)
- ⇒ Business owners will be asked to provide a copy of their business license.
- ⇒ You will be notified of the status of your application within ten business days.
- ⇒ County Agricultural Commissioner is the final authority on the Opt-In decision.



## CONTACT US:

**Apiary Program**  
**County of San Diego**  
**Department of Agriculture,**  
**Weights & Measures**  
San Diego Office  
9325 Hazard Way, Ste. 100  
San Diego, CA 92123  
  
North County Office  
151 E. Carmel Street  
San Marcos, CA 92078

## HOTLINE:

**1-800-200-2337 (BEES)**

## WEB PAGE:

**[www.sdcountybees.org](http://www.sdcountybees.org)**

## EMAIL:

**[Labs.AWM@sdcounty.ca.gov](mailto:Labs.AWM@sdcounty.ca.gov)**

## Helpful Resources

UC Cooperative Extension—  
San Diego  
[www.ucanr.edu/sites/sandiegobees/](http://www.ucanr.edu/sites/sandiegobees/)

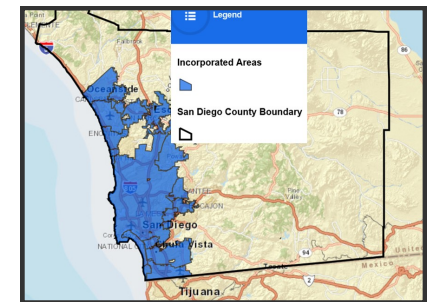
CA State Beekeepers Association  
[www.californiastatebeekeepers.com](http://www.californiastatebeekeepers.com)

San Diego Beekeeping Society  
[www.sandiegobeekeepingsociety.com](http://www.sandiegobeekeepingsociety.com)

## Sensitive Sites near Apiaries and the Opt-In Process



**Apiary Program**  
**County of San Diego**  
**Department of Agriculture,**  
**Weights & Measures**  
**1 (800) 200-2337 (BEES)**



Do the new sensitive site provisions in the revised Beekeeping Ordinance apply to you?

Find out by typing the apiary address into our “Jurisdiction Finder” at [www.sdcountybees.org](http://www.sdcountybees.org).

If you are in the Unincorporated area of San Diego County you may apply to have your location be a sensitive site. Print out your application form at [www.sdcountybees.org](http://www.sdcountybees.org).

# Revised Beekeeping Ordinance

There is a revised Beekeeping Ordinance that expands beekeeping opportunities in the Unincorporated areas of San Diego County. The ordinance includes different components to promote responsible beekeeping and public safety.

The revised regulations apply to managed hives, called apiaries. Managed hives are European honey bees maintained by a beekeeper as a hobby or a business and used for honey production and/or pollination.

The ordinance sets the location requirements for managed beehives according to a tiered system that depends on the number of hives in the apiary. The revised regulations allow a reduction in distances from roads, neighboring dwellings, and property lines and greater flexibility for beekeepers in locating their apiaries.

Wild nuisance (unmanaged) hives and swarms, which may be extremely defensive, are not regulated under this ordinance.



# Sensitive Sites

With the revised Beekeeping Ordinance, the county has a provision for certain locations to be designated as “sensitive sites” that require managed honey bees to be kept at greater distances from these sites as a safety buffer.



Some sensitive sites are automatically designated by the new ordinance including schools, playgrounds, picnic areas, outdoor sports facilities, daycare centers, senior care facilities, medical facilities, kennels and horse-boarding facilities. Other sensitive sites may be designated by the County Agricultural Commissioner through the “OPT-IN” application process.

# Who may apply to “OPT-IN” as a sensitive site?

Honey bee stings pose a threat to at-risk individuals. Locations where these individuals live or work may be designated as a sensitive site by applying to the Apiary Program. Sensitive site applicants in the Unincorporated areas of San Diego County may be:

- » Property operators, owners, or residents who have medical reasons such as hypersensitivity to bee stings or limited mobility;
- » Businesses with employees who have the above conditions;
- » Businesses where bees could cause a nuisance during normal work activities.

Applications can be found at [www.sdcountybees.org](http://www.sdcountybees.org) or at the County Department of Agriculture, Weights & Measures offices.

