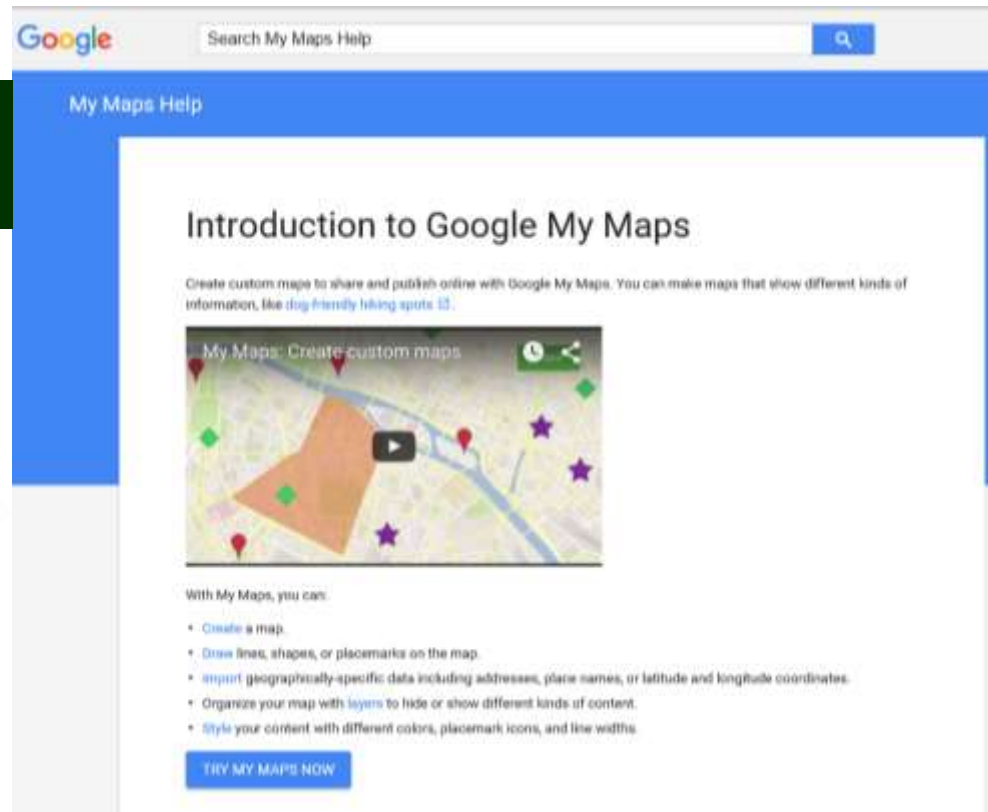


Just Planting a Seed



Explore Google Earth and Web-Integration with Maps for Custom Tourism Routes



University of California

Agriculture and Natural Resources

Informatics and GIS Statewide Program

My Maps...



Google Search My Maps Help

My Maps Help

Create or open a map

When you first launch Google My Maps, you can create a new map or open an existing map.

Create a new map

1. Open [Google My Maps](#).
2. Click [Create a new map](#).
3. Sign in with your [Google Account](#) so you can save your map.

You can also create a map from inside My Maps:

1. In the left panel, click the map menu button.
2. Click [New Map](#) to create a new map.

Title your map

To find your maps more easily, give them a title and description.

1. Open [Google My Maps](#) and create a new map.
2. Click [Untitled map](#) at the top of the left panel.
3. Add a map title and description. These details will appear when you open the map again or share it with others.

Open an existing map

1. Open [Google My Maps](#).
2. Click [Open a map](#).
3. Sign in with your [Google Account](#).
4. You'll see a list of maps created by you. Click the other tabs to see a list of maps shared with you.
5. Double-click a map's name to open.

See map views

To see how many times your map has been viewed, check the view count beside each map.

Next steps

- [Add placements and search results](#)
- [Add lines and shapes](#)

Was this article helpful?

Share this

Change the base map

Change the look and feel of your map with one click. You can use the regular Google base map, or select from 9 different styles to find the one that fits your map best.

Changing the base map can highlight your information by removing extra labels and state lines.



To change the base map:

1. Open a new or existing map in My Maps.
2. At the bottom of the left panel, to the left of "Base map," click the drop-down arrow.
3. Hover over the thumbnails to get a description of the base map style.
4. Click any of the map thumbnails to view your data with the new base map.



University of California

Agriculture and Natural Resources

Informatics and GIS Statewide Program

Google Earth Pro

Things to talk about:

- Google Earth Pro is now free and is better than the old version
 - you should uninstall the original version before installing the new version or files may not load automatically
- Navigating around in Google Earth
 - Press 'R' to pan straight down to nadir
- Types of Imagery
 - Includes Landsat, Spot, and the high resolution 0.3 – 4 meter Digital Globe constellation of satellites
- Digitizing (adding points, lines and polygons)
 - Uncheck 'Terrain' at the bottom of the Layers menu
- Layer Properties
 - Includes coordinates, length of lines, and area of polygon shapes (area is new in Pro)
- Time slider for historic imagery
 - Spatial error varies between images
- Organizing and saving files (right click under places)
 - File type (Google Earth's KMZ is a compressed KML)
- Simple georegistration of image overlays
 - Save as KML/KMZ afterward to keep the spatial reference of the images



Example from Washington State, the Cascade Loop, for Trip Ideas and Tripbuilder Map



Explore Their
Trip Ideas or
Make Your
Own...FUN 😊

<http://cascadeloop.com/>

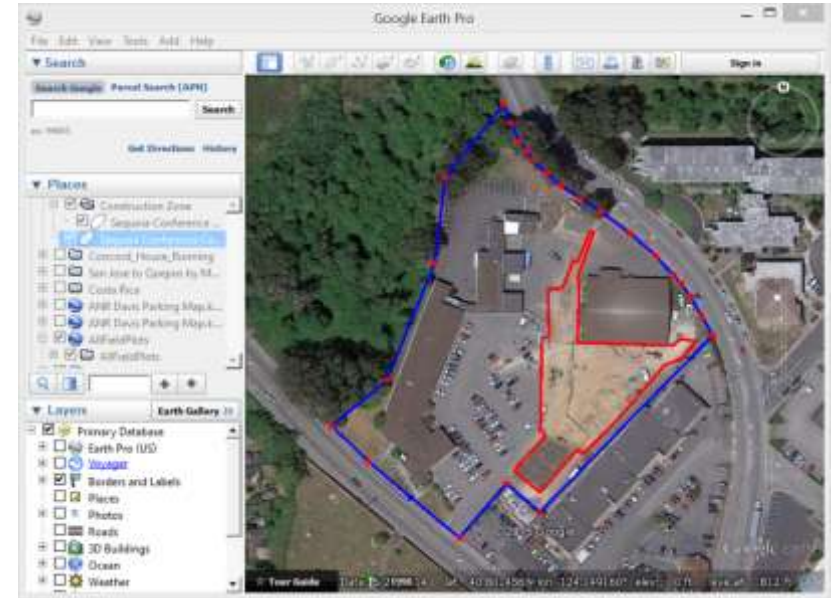


University of California

Agriculture and Natural Resources

Informatics and GIS Statewide Pro

Free & Easy Mapping Digitizing with Google Earth using the Time Slider Option



<https://support.google.com/earth/answer/176160?hl=en> (Download)

<https://support.google.com/earth/answer/176576?hl=en> (Tutorial)

If Interest, I can Organize a Half-Day Participatory Training Next Spring---(estimated cost \$60 w lunch)



University of California

Agriculture and Natural Resources

Informatics and GIS Statewide Program