

SIGNS OF WATER STRESS



SYMPTOMS OF UNDER-WATERING

[Starving the Roots]

- * Yellow or mottled leaves.
- * Leaves look dull, somewhat grayed, and lack a reflective quality.
- * Poor fruit/blossom development
- * Leaf roll



SYMPTOMS OF OVER-WATERING

[Drowning the Roots]

- * Yellow or mottled leaves.
- * Leaves turn pale green or yellow and then fall off.
- * Plants grow poorly, and spindly stems flop.

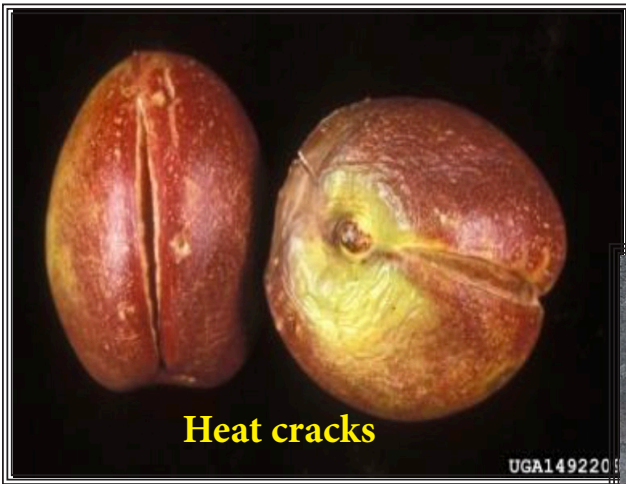
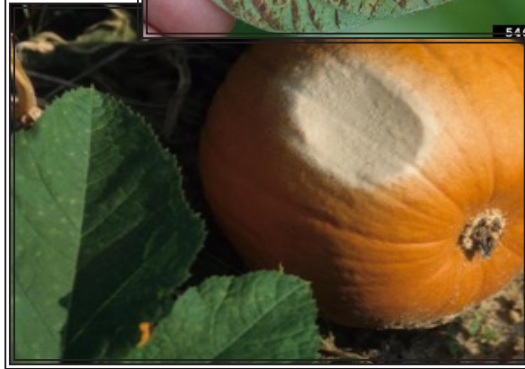


<https://theprudentgarden.com/garden-heat-stress>



SIGNS OF HEAT STRESS

- * Leaf drop
- * Plants stop flowering (blossom drop)
- * Mottled leaves
- * Heat cracks
- * Blossom end rot
- * Bolting



SIGNS OF OZONE STRESS

- * Yellow leaves
- * Leaves wither / drop off
- * Tip burn

