

Plumas & Sierra Counties

ucce-plumas-sierra.ucanr.edu

University of California
Agriculture and Natural Resources



Annual Report 2022-2023

David Lile, County Director
530-251-6673 - dfile@ucanr.edu

Tracy Schohr, Livestock and Natural Resources
916-716-2643 *cell* - tk schohr@ucanr.edu

Ryan Tompkins, Forestry and Natural Resources
530-283-6125 - retompkins@ucanr.edu

Sierra Washington, 4-H Program Representative
530-283-6173 - swashington@ucanr.edu

Tom Getts, Weed Control and Cropping Systems
530-251-2650 - tjgetts@ucanr.edu

Samantha Brown, Administrative Assistant
530-283-6270 - smgbrown@ucanr.edu

Nic Dutch, Post Fire Resilience Staff Research Associate
nicdutch@ucanr.edu



We are excited to share with you this report highlighting local impacts of UC Cooperative Extension in Plumas and Sierra counties! In the following pages we will highlight the many extension education, applied research, and community service projects completed by the UCCE team over the past year. We couldn't be more thankful for the opportunity to serve the communities in which we live. As always, our contact information is right on the front page and we encourage you to reach out with new emerging needs, to learn more about our existing programs, or to simply say "Hi" at anytime.

- David Lile, County Director

Welcome Nic!

This winter Nic Dutch joined us in their new role as the Staff Research Associate for the UCCE Post-Fire Resilience and Forest Health initiative. As a part of this program, Nic is facilitating post-fire educational workshops statewide and developing accessible material aimed to assist small non-industrial private forest landowners in the Sierras, especially those in Plumas, Lassen, and Sierra counties. In collaboration with our local partners at the Feather River RCD, Nic has organized educational events like this April's volunteer tree planting day in Greenville. In addition, their applied research program is focused on monitoring the effectiveness of the statewide Emergency Forest Restoration Team(s) deployment, which is ongoing in Plumas and Lassen counties.



Hailing from SoCal and fresh out of UC Berkeley's Forestry Program, they are passionate about community-centered land management and pyrosilviculture. When Nic's not in the office, you can find them out burning with Plumas Underburn Cooperative, volunteering at the local farm, or enjoying the endless recreational opportunities Plumas county has to offer.

4-H Community Education Specialist, Sierra Washington, joined the UCCE team in July, 2022. It has been an exciting time to help strengthen and grow the Plumas-Sierra 4-H program. She looks forward to engaging youth in the opportunity 4-H provides to “Spark what helps them Thrive!”



Camp

4-H Camp is such a valuable opportunity for youth to connect and grow. With the change to the Fair dates, 2022 camp was cancelled but we are excited for our 4-H Camp at Bucks Lake in August 2023!



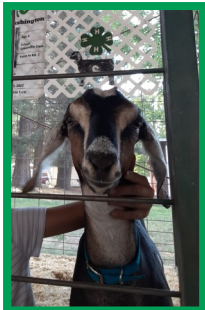
County Events

We're back in FULL SWING with great attendance of our Presentation Day and Livestock 101 events. The 4-H Awareness Day, Small Animal Field Day & Horse Education Field Day are coming up for our 4-H youth to enjoy.



Engagement

Plumas-Sierra 4-H is loving our growth! Our 2022-23 clubs have 214 members, 25% of whom are primary members, ages 5-8. With new community member involvement, we now have 65 club volunteers!



Animal Science

The 2022 Plumas-Sierra County Fair and PSJLA Auction inspired our youth.... This year we have over 250 animal science member-projects with many members selling livestock at auction.

Welcome, Sierra!

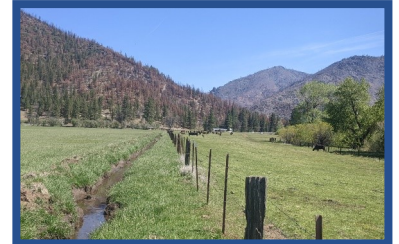
Sierra Washington joins 4-H with a love of animals, children, science, art and nature. It is her hope to support existing programming, build connective relationships with schools and community organizations and help local youth learn by doing. Sierra lives in Greenville and was introduced to 4-H through the Wolf Creek 4-H club her daughter is a member of. After the Dixie Fire, the positive power the club held to engage its members and families through community service further sparked Sierra's commitment to service through 4-H.

Tracy Schohr is the Livestock and Natural Resources advisor. Schohr is conducting extension, education and applied research focusing on livestock production, water, economics, and sustainable range and pasture management. She is developing solutions to the complex issues facing land managers and commercial livestock producers in the region.

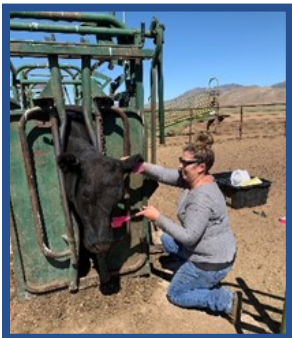


Research to Policy

Schohr coordinated conversations with UCANR statewide specialists, County Director Lile, farmers, ranchers, and the Central Valley Regional Water Board to understand regional irrigated pasture practices and local water quality research. Schohr conducted a groundwater quality study, surveyed every irrigated land manager in Plumas and Sierra County, and hosted field tours. From these activities, the Water Board at their February 2023 meeting exempted the Upper Feather River Watershed from the Irrigated Lands Regulatory Program. The exemption translates to a regional \$57,000 annual cost savings and a projected 1,000-hour reduction in paperwork for farmers and ranchers previously regulated under program, while protecting water quality.



Post Fire Grazing



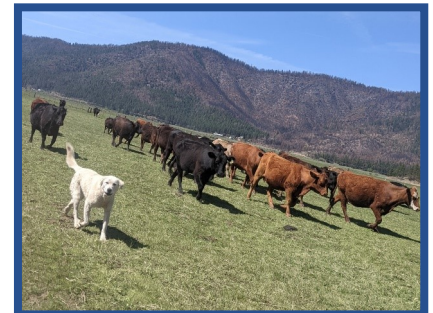
Schohr secured grant funding to investigate variations in grazing distribution and utilization pre and post Dixie Fire. This project is integrating cattle GPS distribution data with on-the-ground forage monitoring in the Plumas National Forest. The outcomes of this project will guide land management policies and procedures, while assisting ranchers in grazing management that will improve natural resources following catastrophic fires.



Launched a new project investigating impacts of grasshoppers infestations on irrigated pasture.



Facilitated discussions with public agencies to improve land management and use of grazing as a tool to reduce fire fuels.



Hosted trainings and provided technical assistance on drought strategies, predators, animal health, regulatory compliance, and more.

Weed Ecology and Cropping Systems Advisor, Tom Getts, has been working with agricultural producers and land managers since 2015. His program focuses on providing insight to agronomic challenges and solving pest problems with IPM strategies throughout the intermountain region.



Program

Contact Information

Tjgetts@ucanr.edu

530-251-2650



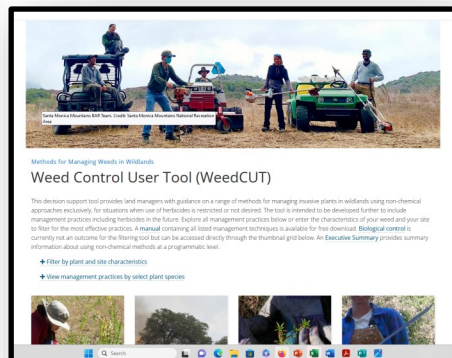
My program is available in person and over the phone to provide technical information for local producers to diagnose fertility and pest problems.



UC works to organize and contribute to educational workshops to address issues relevant to producers in Plumas and Sierra counties.



I conduct weed control research trials to demonstrate the effectiveness of herbicides and biological control for management of various invasive weed species.



Development of WEED CUT an online interactive decision support tool for Non-chemical weed control practices for land owners and managers.



Pest management is important for agricultural producers. We have been active in communicating methods for monitoring and controlling various insects.

Ryan Tompkins is the Cooperative Extension Forester and Natural Resources Advisor (RPF#3108). His research and extension program focuses on sustainable forest management and restoration, building community resilience to wildfire and climate change, and supporting rural natural resource-based community capacity development.



Sustainable Forest Management and Restoration:



- SNC Forest Health Grant: Collaboration with UC Berkeley Forests & Plumas NF to demonstrate science based forest management & restoration supporting the 30,000 acre Claremont Resiliency Project
- [Forest Resilience Study](#): This work has been extended to the Calif. Board of Forestry to re-examine how Calif. Forest Practice Rules stocking requirements may or may not facilitate forest restoration goals
- Serve on the Council on Science and Technology Project steering committee: “Linking Forest Health, Wildfire Smoke, and Public Health.”
- Serve on Governor Newsom’s Wildfire & Forest Resilience Task Force: Science Advisory Panel as forest management expert

Building community resilience to wildfire & climate change:

- Co-developed concept/proposal and advise the Plumas Emergency Forest Restoration Team (EForT): a coalition of local NGOs led by Feather River RCD securing over \$19 million of funding to deliver technical & funding assistance to forest landowners impacted by fires
- Co-PI on statewide Post-fire resilience assistance program delivering education and outreach to landowners impacted by fire.
- Serve on the Calif. Wildfire and Forest Resilience Task Force Reforestation Working Group developing the Statewide Reforestation Strategy
- Serve on the steering committee of American Forests Reforestation Pipeline Project designed to grow all aspects of the reforestation industry from cone, seed, nursery, planting phases.



Support rural natural resource-based community capacity:

- Cooperative Extension technical assistance and events reached over 400 state, federal, and private natural resource managers and policy makers
- Co-developed the Post-Fire Restoration Symposium at Feather River College
- Hosted the Post-fire Reforestation Field Tour drawing over 90 local, regional, state, federal, and private land managers, decision makers, and policy experts to motivate science-based reforestation on public and private lands.
- Developed & maintain the [Online Firewise reporting tool](#) documenting >28,000 volunteer hours & \$3 Million of Firewise investments
- Forest Management instructor at UC Berkeley Forestry Camp
- Fire Safe Councils, Firewise Communities, Prescribed Fire Training Exchanges (TREX) & Prescribed burn associations