



TAHOE FRIENDLY GARDEN DESIGN



Kathleen Maston and Jennifer Cressy, UCCE Master Gardeners of Lake Tahoe



Tahoe Friendly Garden

A Tahoe Friendly Garden design uses less water, less fertilizer and fewer pesticides, is defensible from wildfire, protects water quality and includes a diversity of plants and design features

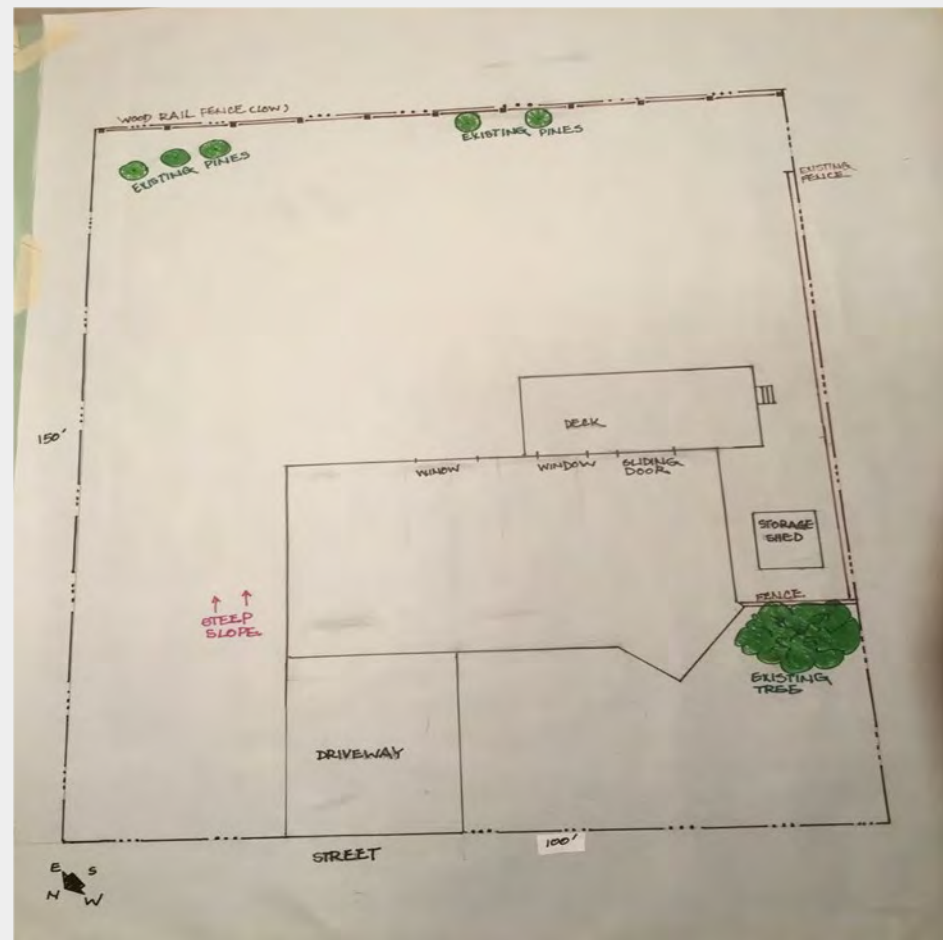
Overview of the Design Process

- Analyze your site
- Identify opportunities and challenges
- Delineate activity zones
- Connect the spaces
- Group plants according to light and water requirements
- Select and place plants
- Plan for efficient irrigation



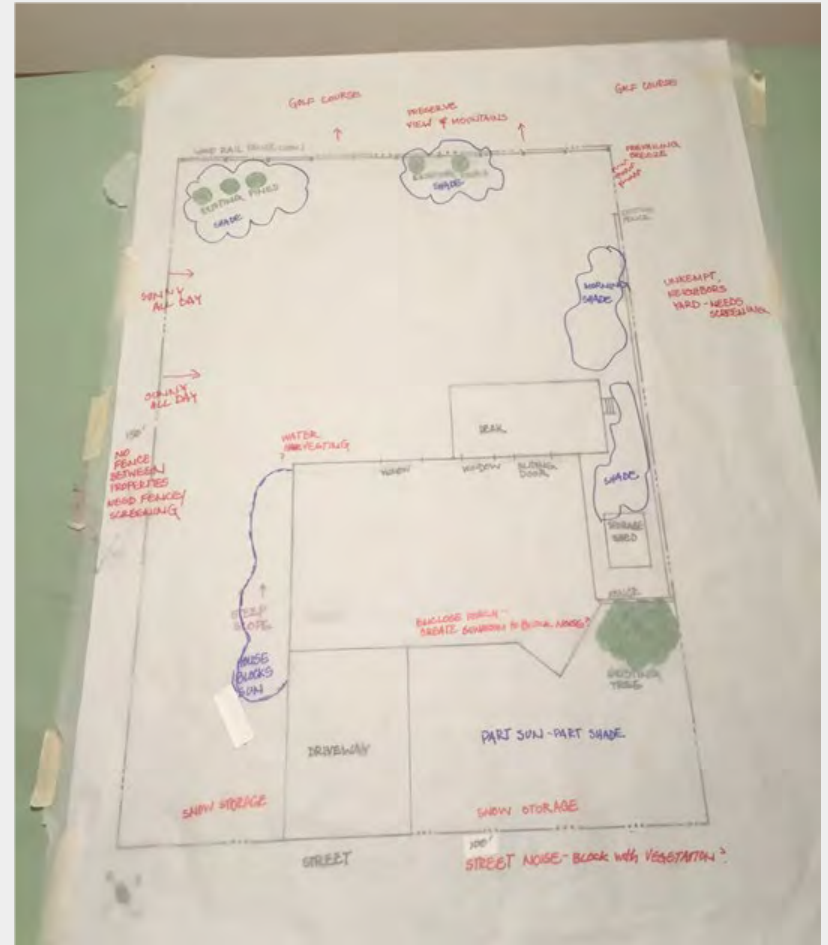
Site Analysis: Base Plan

- Your house
- Other structures
- Retaining walls
- Boulders
- Slopes
- Existing trees
- Vegetation you plan to keep



Site Analysis: Challenges and Opportunities

- Sun exposure
- Existing shade
- Wind direction
- Views
- Noise
- Drainage
- Snow storage
- Wildfire hazards



Mitigation

- Water Quality Best Management Practices (BMPs)
<https://tahoebmp.org/> or call 775-589-5282
- TRPA Land Coverage
<https://www.trpa.gov/land-coverage/>
- Defensible Space
<https://www.tahoelivingwithfire.com/get-prepared/>

A Five Step Approach to Landscape Design

1. Central Open Spaces
2. Gathering Spaces
3. Activity Zones
4. Pathways
5. Planting Areas





Plant Selection:

Right Plant, Right Place

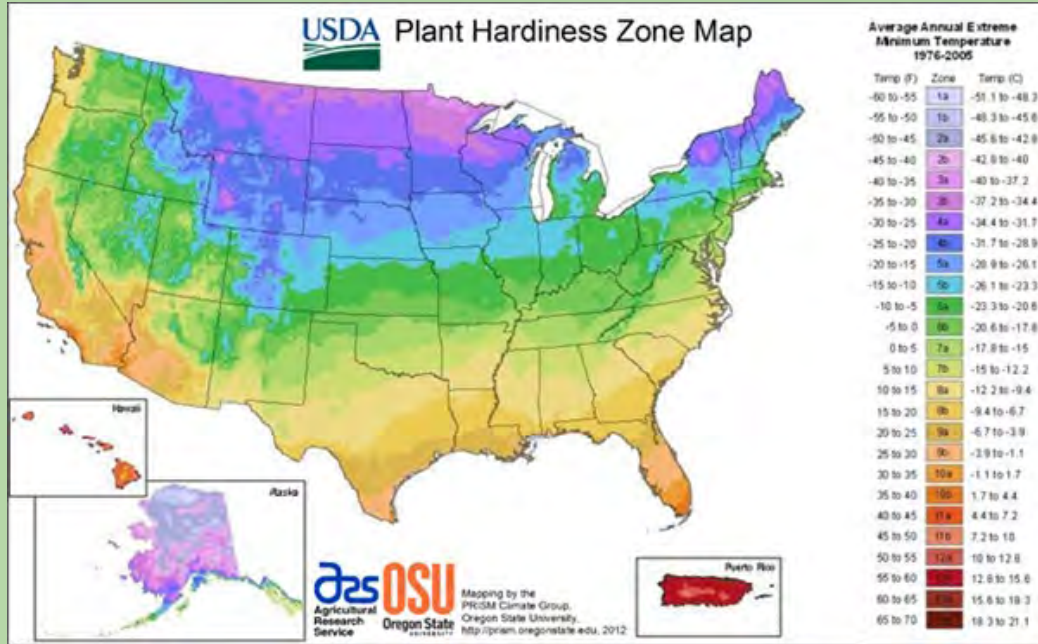
1. Climate appropriate
2. Water needs – hydrozone
3. Sun exposure
4. Microclimates
5. Native and adapted plants
6. Long bloom season
7. Seasonal interest
8. Habitat
9. Pollinators
10. Spacing

Plant Selection

Sunset Zone: 2b (Extreme -10 to -20)

USDA Zones: 6b-7a (Extreme -10 to -20)

Look at labels, check catalogs and websites, ask at nurseries to see if your selections grow in our Tahoe zones.



Tahoe Climate Considerations

- Cool nights, arid summers
- Snow in summer
- Drying winds
- Cold sinks
- Seasonal high ground water



Hydrozoning



High water hydrozone



Low water hydrozone

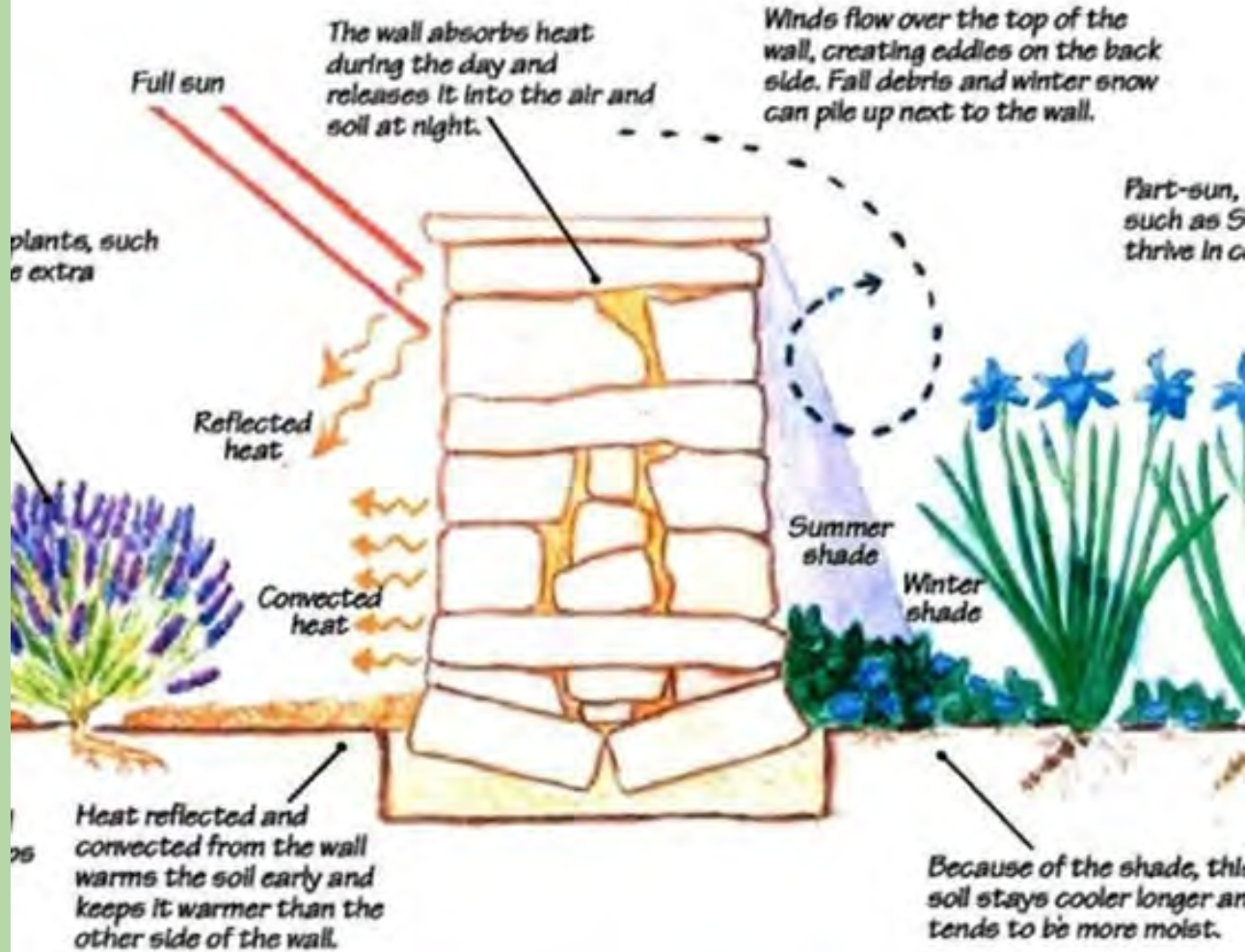
Exposure

- Sun: 6+ hours
- Part sun: 4-6 hours
- Shade: less than 4 hours



Microclimates and Watering Zones

- Exposures vary (sun, heat, wind, frost)
- Watering zones: Very low, low and moderate



Benefits of Native Plants

- Adapted to climate and nutrient-poor soil
- Support pollinators adapted to these plants
- Support local and migratory birds and other wildlife
- Reflect/extend the surrounding environment
- Need no additional fertilizer
- Naturally pest resistant





Sulphur flower buckwheat



California fuchsia



Moonshine yarrow



Firecracker penstemon

Very Low Water Use



Bearberry

- Existing conifers and dryland native shrubs
- Perennials that need no additional water once adapted



Blanket flower

Low Water Use

- Wildflowers

Comstockseeds.com

- Native shrubs



Oregon grape



Wildflower mix



Sierra Currant



Creambush



Twinberry



Vine maple

Moderate Water Use

Shrubs, trees and herbaceous plants that you would find near seasonal streams and the meadow edge.



Lupine



Western columbine



Serviceberry



Chokeberry

Extend the Bloom Season - Early Bloomers



Chokecherry



Sand Cherry



Forsythia



Oregon Grape



Bugloss



Wood Anemone



Lungwort



Snow Drop

Extend the Bloom Season

Late Bloomers



California Fuschia



Goldenrod



Sedum



hydrangea

Seasonal Interest - Fall Color



Vine Maple



Chokeberry



Dogwood

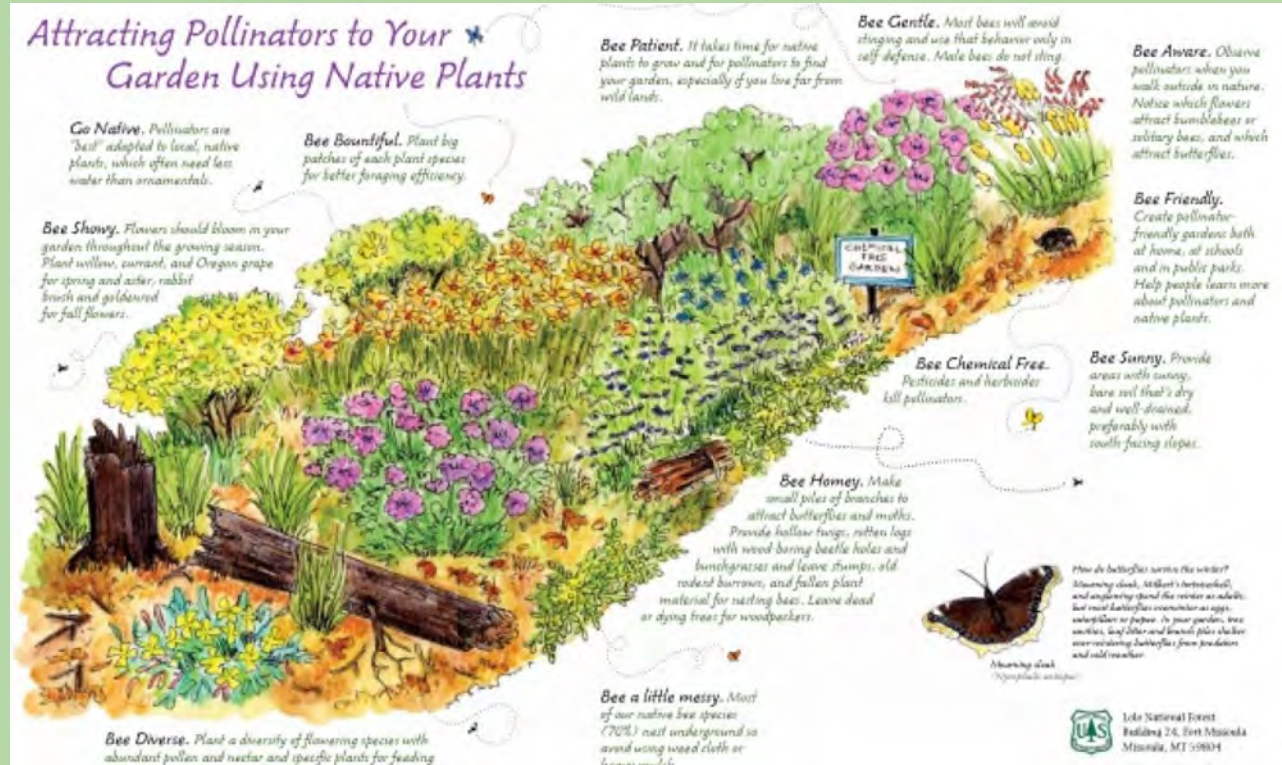
Plan for Habitat

- Food
- Water
- Shelter
- Nesting



Plan for Pollinators

- Native
- Wind portection
- Sun
- Chemical free
- Massing
- Diversity



Size Matters - So Does Spacing

- Plant small
- Space new trees, shrubs, and perennials according to their mature size





Design Guidelines

- Engage the Senses
- Mass Plants for Impact
 - Odd numbers
- Use Contrast
- Create Unity
- Use Focal points
- Choose a Style: straight vs curved lines

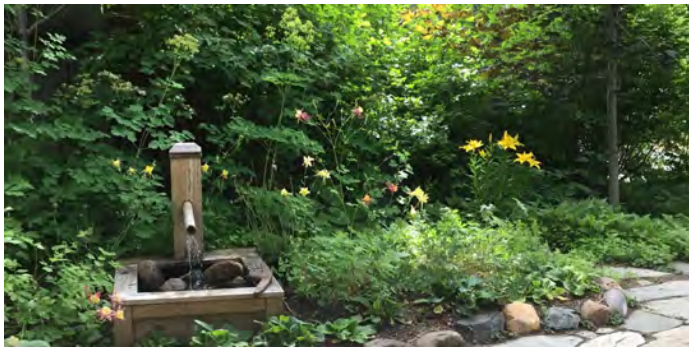
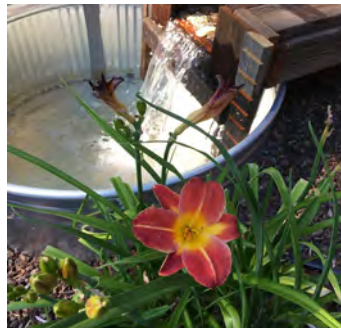


Engage the Senses

- Sight: color, movement
- Sound: water, wind chimes
- Touch: textures
- Smell: fragrance

Sight: Color and Movement

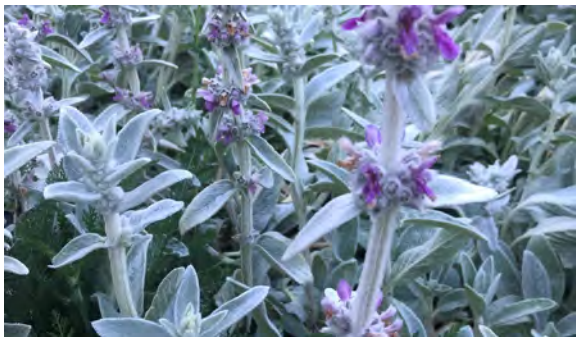




Sound:

Water and Wind
Chimes

Touch: Texture



Smell: Fragrance



Mass Plants for Impact

- Avoid “onesyitis”
- Plant in odd numbers
- Attract pollinators



Design for Contrast

- Height
 - tall to small
- Texture
- Color
- Shapes





Design for Unity

Repeat:

- Color
- Height
- Texture
- Shape

Design for Focal Points

- Garden art
- Water feature
- Specimen plants



What's My Style?

- Formal
 - Straight lines
 - Symmetry
 - Defined spaces
- Informal
 - Curved lines
 - Wild



Add Personal Whimsy!



Learn by Doing



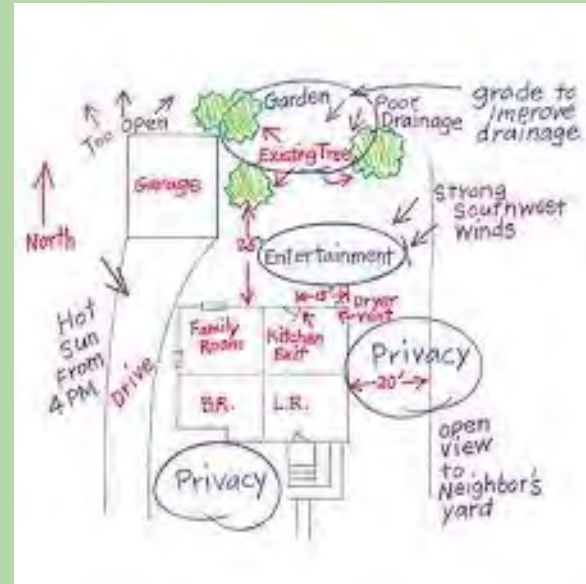


Questions before we start the design activity?

Design Activity

Putting it all together

- Analyze your site
- Delineate functional spaces
- Design for Defensible Space
- Incorporate water quality measures
- Choose appropriate plants
- Zone your plants by water needs
- Limit turf areas



If you joined by video today, please send your plan to icressy@stpud.us for feedback and sign up for a water wise landscape for one on one advise (in person consults for STPUD customers only).

See you at the end of the month or sooner if you are a STPUD customer by signing up for a free water wise landscape consultation at <http://stpud.us/waterconserv/>



FREE GARDENING WORKSHOP

EFFICIENT IRRIGATION & DRIP IRRIGATION DESIGN

What you wish you knew about efficient irrigation practices and technology.

TUESDAY 8/22: 6 pm - 7:30 pm



Hosted at South Tahoe Public Utility District
1275 Meadow Crest Drive
stpud.us