



TAHOE FRIENDLY LANDSCAPE DESIGN



Jennifer Cressy and Kathleen Maston, UCCE Master Gardeners of Lake Tahoe



Tahoe Friendly Garden

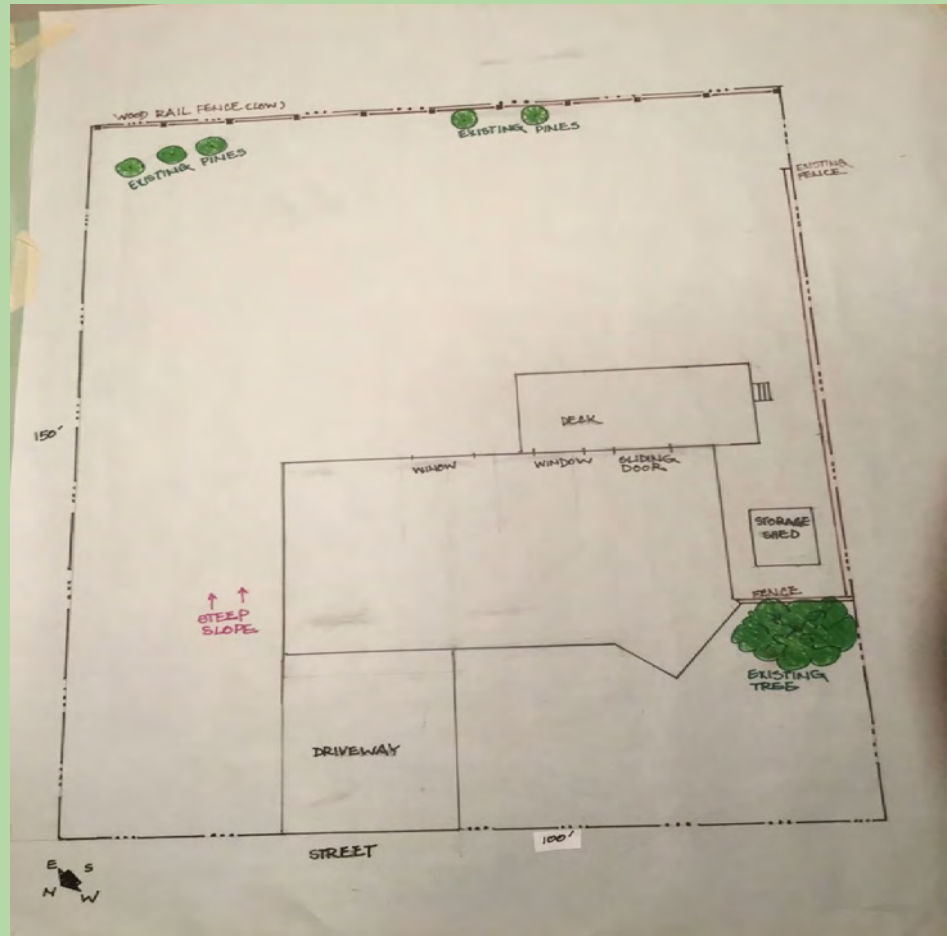
A Tahoe Friendly Garden design uses less water, less fertilizer and fewer pesticides, is defensible from wildfire, protects water quality and includes a diversity of plants and design features



Traditional European/East Coast Landscapes vs. Tahoe Friendly Gardens

Site Analysis: Base Plan

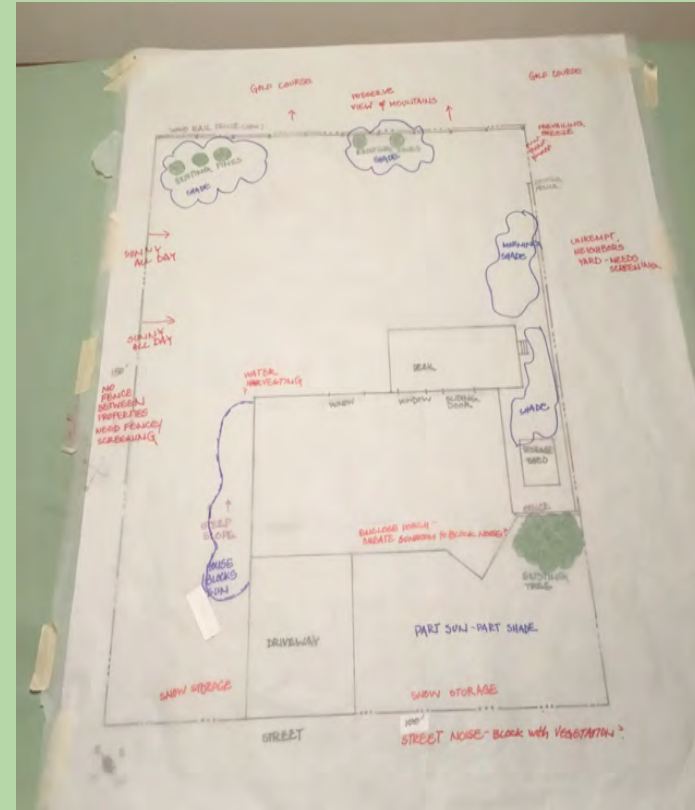
- Your house
- Other structures
- Retaining walls
- Boulders
- Slopes
- Existing trees
- Vegetation you plan to keep



Site Analysis:

Challenges and Opportunities

- Sun exposure
- Existing shade
- Wind direction
- Views
- Noise
- Drainage
- Snow storage
- Wildfire hazards



Design for Defensible Space

- **Zone 0:** (0-5 ft) Non Combustible/Ember Resistant Zone
- **Zone 1:** (5-30 ft) Lean, Clean and Green Zone
- **Zone 2:** (30-100 ft) Wildland Fuel Reduction Zone



Defensible Space: Zero to 5 feet

- Ember resistant area around structure
- Little to no vegetation in this area.
- Rock Mulch
- Plants-native/adapted groundcovers with drip irrigation or maintained lawn
- No foundation planting!



Lean Clean and Green

- Use a mosaic design landscape approach
- Plant and maintain healthy native/adapted climate adapted plants
- Separate ladder fuels
- Remove flammable debris





Design Examples for Lean, Clean and Green



Fuel Reduction Area – 30 to 100 feet

Design for Water Quality

- Prevent erosion
- Keep all water on site
- Don't pollute
- TahoeBMP.org





Questions before we start thinking about how to plan a landscape design?

Localscaping

Simple 5 step process to Landscape Design



Step One – Block Central Open Shapes

- Contrast of open and filled spaces
- Resting space for the eyes
- Multiple materials to choose from
- Lawns are a popular choice



Central Open Shapes - Lawns



Design for Efficiency and Function

- Choose simple shapes
- Eliminate problem areas
- Irrigate efficiently

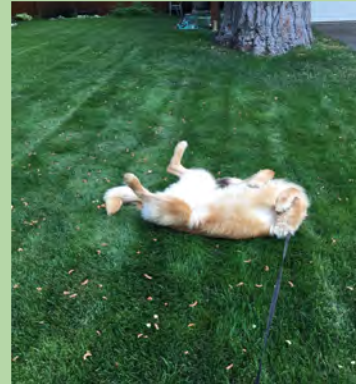
Step Two – Define Gathering Spaces



- Patios use no water and can be fire resistant
- Water permeable
- Don't have to move the furniture to mow the lawn
- Customizable

Step Three – Block Activity Zones

- Pets
- Kids
- Pollinators
- Spas
- Gardens
- Storage



Step Four – Connect the Spaces



- Connect the open central shapes, gathering spaces and activity zones.
- Draw your eye through the landscape
- Provide a contrast in texture
- Function as a visual break
- May count as land coverage

Step Five – Block your Planting Spaces

- Place plants where you can enjoy them and for curb appeal
- Pay attention to plant density and selection for defensible space
- Plant for water quality
- Hydrozone your plants for water efficiency
- Plant for habitat



A Five Step Approach to Landscape Design

Start with the big picture

1. Central Open Space
2. Gathering Spaces
3. Activity Zones
4. Pathways
5. Planting Areas



Questions?

Ready, Set, Plan!



Site Analysis: Base Plan

- Your house
- Other structures
- Retaining walls
- Boulders
- Slopes
- Existing trees
- Vegetation you plan to keep



Site Analysis:

Challenges and Opportunities

- Sun exposure
- Existing shade
- Wind direction
- Views
- Noise
- Drainage
- Snow storage
- Wildfire hazards



Five Step Approach to Landscape Design:

1. Central Open Space
2. Gathering Spaces
3. Activity Zones
4. Pathways
5. Planting Areas

Join virtually at <https://tinyurl.com/stpudworkshop>



FREE GARDENING WORKSHOP

DESIGNING TAHOE FRIENDLY GARDENS

Do it right the first time. Place and select
the right plants in the right place.

TUESDAY 8/1: 6 pm - 7:30 pm



Hosted at South Tahoe Public Utility
District 1275 Meadow Crest Drive
stpud.us



FREE GARDENING WORKSHOP

EFFICIENT IRRIGATION & DRIP IRRIGATION DESIGN

What you wish you knew about efficient
irrigation practices and technology.

TUESDAY 8/22: 6 pm - 7:30 pm



Hosted at South Tahoe Public Utility
District 1275 Meadow Crest Drive
stpud.us